

Data Path : Z:\pestpcbsrv\HPCHEM1\ECD_Q\Data\PQ100318\
 Data File : PQ032612.D
 Signal(s) : Signal #1: ECD1A.ch Signal #2: ECD2B.ch
 Acq On : 03 Oct 2018 21:42
 Operator : SM\SJ
 Sample : J5221-15
 Misc :
 ALS Vial : 33 Sample Multiplier: 1

Instrument :
 ECD_Q
ClientSampleId :
 100118-SIDI-E-U-M

Manual Integrations
APPROVED
 Sohil
 10/4/2018 5:08:55 PM

Integration File signal 1: autoint1.e
 Integration File signal 2: autoint2.e
 Quant Time: Oct 04 02:55:00 2018
 Quant Method : Z:\pestpcbsrv\HPCHEM1\ECD_Q\Method\PQ091818.M
 Quant Title : GC EXTRACTABLES
 QLast Update : Wed Sep 19 02:07:33 2018
 Response via : Initial Calibration
 Integrator: ChemStation

Volume Inj. : 2 µl
 Signal #1 Phase : ZB-MR1 Signal #2 Phase: ZB-MR2
 Signal #1 Info : 30Mx0.32mmx 0.50µ Signal #2 Info : 30M x 0.32mm x 0.25µm

Compound	RT#1	RT#2	Resp#1	Resp#2	ng/ml	ng/ml

System Monitoring Compounds						
1) SA Tetrachlo...	4.589	3.867	46551370	36051292	20.076	18.001
2) SA Decachlor...	10.440	8.936	26700396	24559007	12.808	12.683m

Target Compounds

(f)=RT Delta > 1/2 Window (#)=Amounts differ by > 25% (m)=manual int.

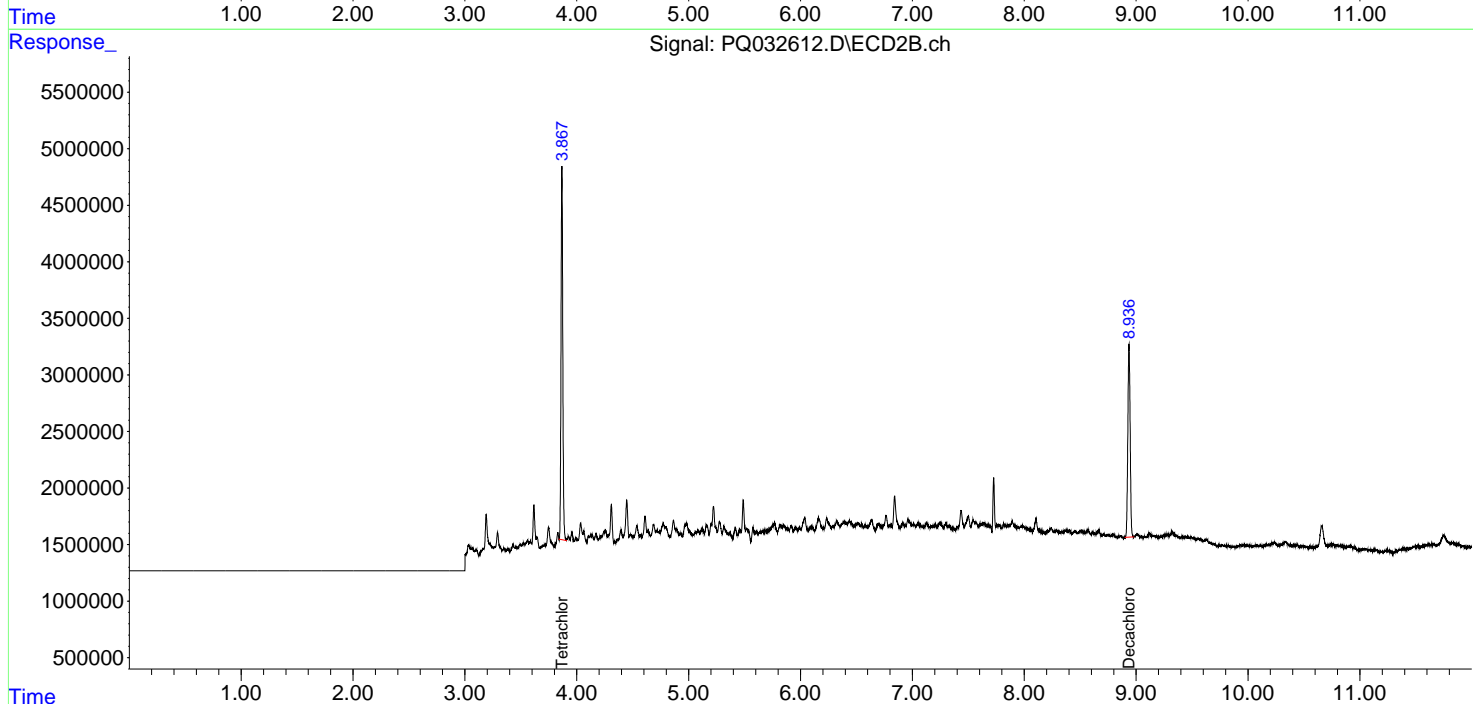
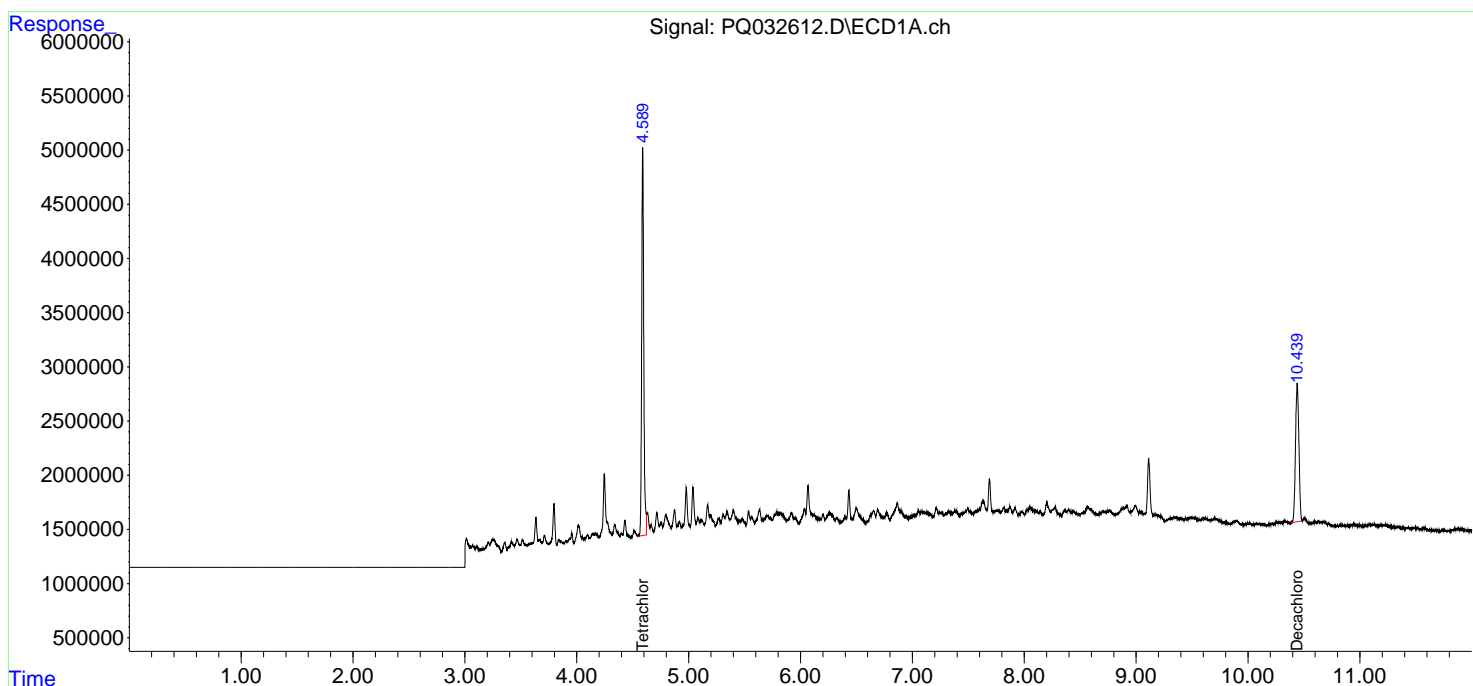
Data Path : Z:\pestpcbsrv\HPCHEM1\ECD_Q\Data\PQ100318\
 Data File : PQ032612.D
 Signal(s) : Signal #1: ECD1A.ch Signal #2: ECD2B.ch
 Acq On : 03 Oct 2018 21:42
 Operator : SM\SJ
 Sample : J5221-15
 Misc :
 ALS Vial : 33 Sample Multiplier: 1

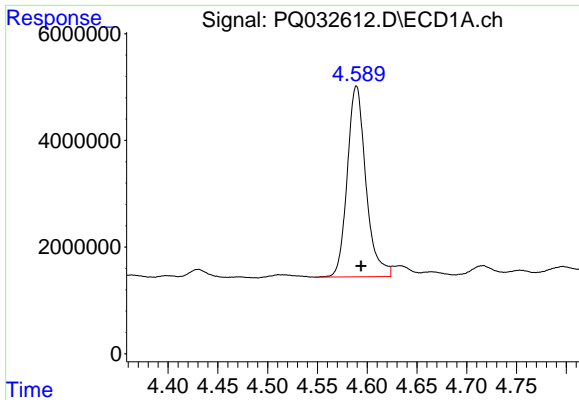
Instrument :
 ECD_Q
ClientSampled :
 100118-SIDI-E-U-M

Manual Integrations
APPROVED
 Sohil
 10/4/2018 5:08:55 PM

Integration File signal 1: autoint1.e
 Integration File signal 2: autoint2.e
 Quant Time: Oct 04 02:55:00 2018
 Quant Method : Z:\pestpcbsrv\HPCHEM1\ECD_Q\Method\PQ091818.M
 Quant Title : GC EXTRACTABLES
 QLast Update : Wed Sep 19 02:07:33 2018
 Response via : Initial Calibration
 Integrator: ChemStation

Volume Inj. : 2 µl
 Signal #1 Phase : ZB-MR1 Signal #2 Phase: ZB-MR2
 Signal #1 Info : 30Mx0.32mmx 0.50µ Signal #2 Info : 30M x 0.32mm x 0.25µm

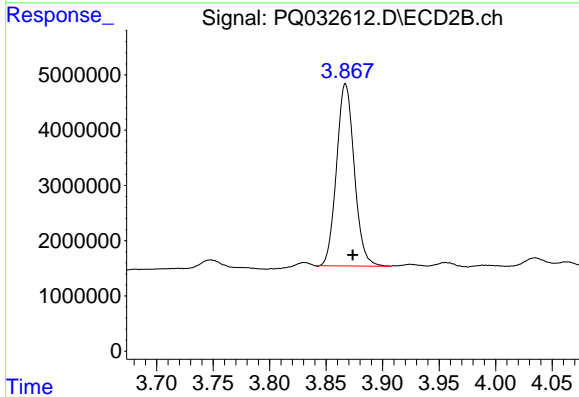




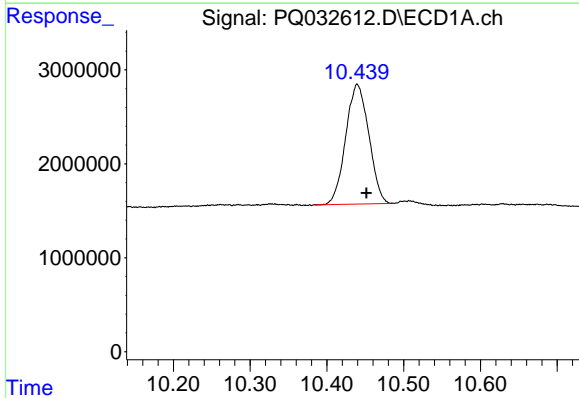
#1 Tetrachloro-m-xylene
 R.T.: 4.589 min
 Delta R.T.: -0.005 min
 Response: 46551370
 Conc: 20.08 ng/ml

Instrument :
 ECD_Q
ClientSampled :
 100118-SIDI-E-U-M

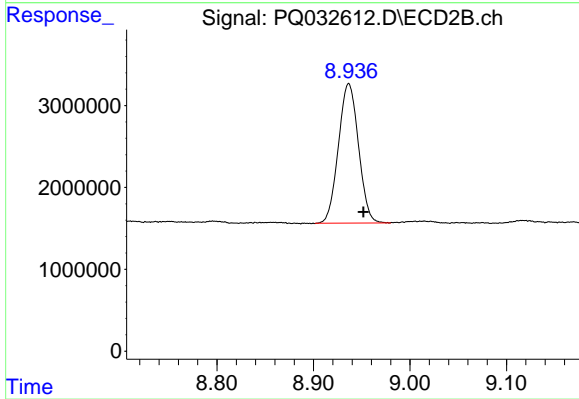
Manual Integrations
APPROVED
 Sohil
 10/4/2018 5:08:55 PM



#1 Tetrachloro-m-xylene
 R.T.: 3.867 min
 Delta R.T.: -0.007 min
 Response: 36051292
 Conc: 18.00 ng/ml



#2 Decachlorobiphenyl
 R.T.: 10.440 min
 Delta R.T.: -0.012 min
 Response: 26700396
 Conc: 12.81 ng/ml



#2 Decachlorobiphenyl
 R.T.: 8.936 min
 Delta R.T.: -0.015 min
 Response: 24559007
 Conc: 12.68 ng/ml m