

Data Path : Z:\pestpcbsrv\HPCHEM1\ECD\_Q\Data\PQ010719\  
Data File : PQ036258.D  
Signal(s) : Signal #1: ECD1A.ch Signal #2: ECD2B.ch  
Acq On : 07 Jan 2019 07:56  
Operator : SM\SJ  
Sample : HEXANE  
Misc :  
ALS Vial : 1 Sample Multiplier: 1

Instrument :  
ECD\_Q  
ClientSampleId :  
HEXANE

Integration File signal 1: autoint1.e  
Integration File signal 2: autoint2.e  
Quant Time: Jan 08 00:57:27 2019  
Quant Method : Z:\pestpcbsrv\HPCHEM1\ECD\_Q\Method\PQ122918.M  
Quant Title : GC EXTRACTABLES  
QLast Update : Mon Dec 31 04:01:58 2018  
Response via : Initial Calibration  
Integrator: ChemStation

Volume Inj. : 2 µl  
Signal #1 Phase : ZB-MR1 Signal #2 Phase: ZB-MR2  
Signal #1 Info : 30Mx0.32mmx 0.50µ Signal #2 Info : 30M x 0.32mm x 0.25µm

Compound	RT#1	RT#2	Resp#1	Resp#2	ng/ml	ng/ml
----------	------	------	--------	--------	-------	-------

-----  
System Monitoring Compounds

Target Compounds  
-----

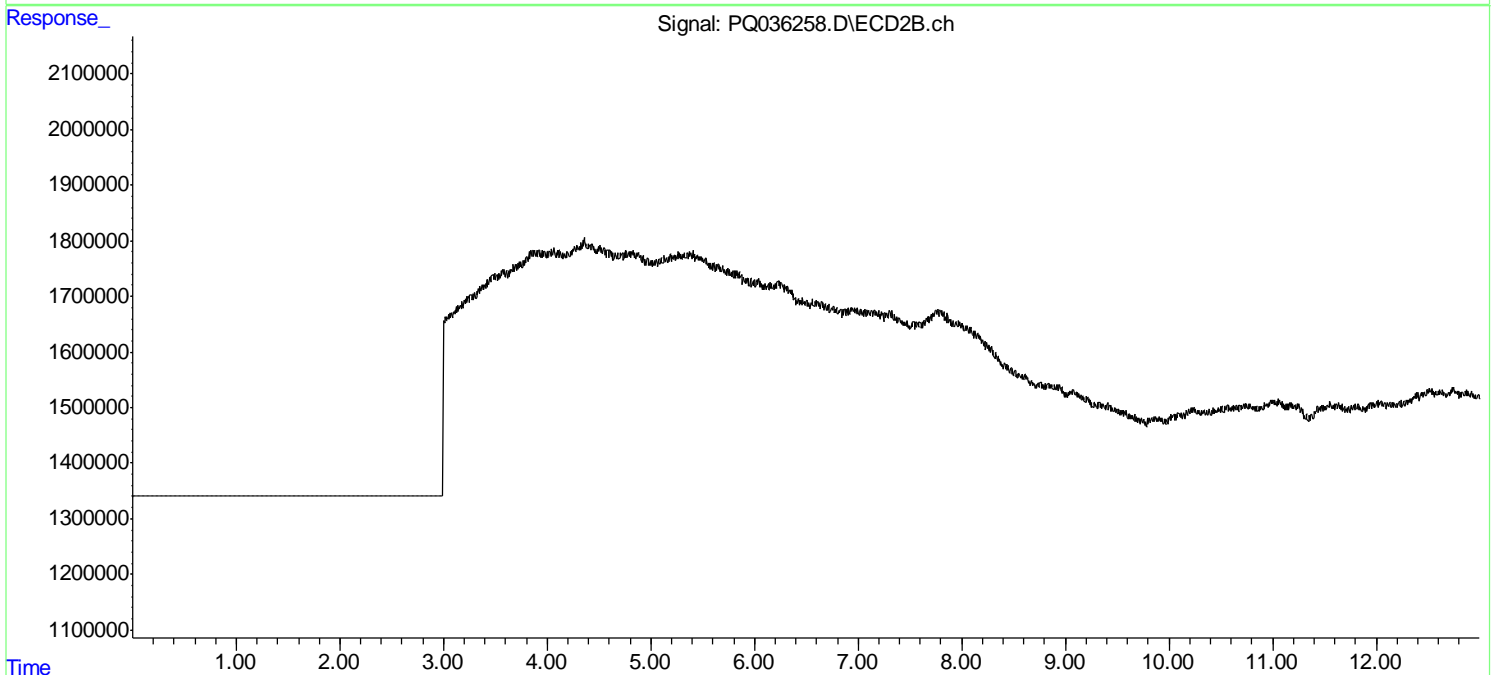
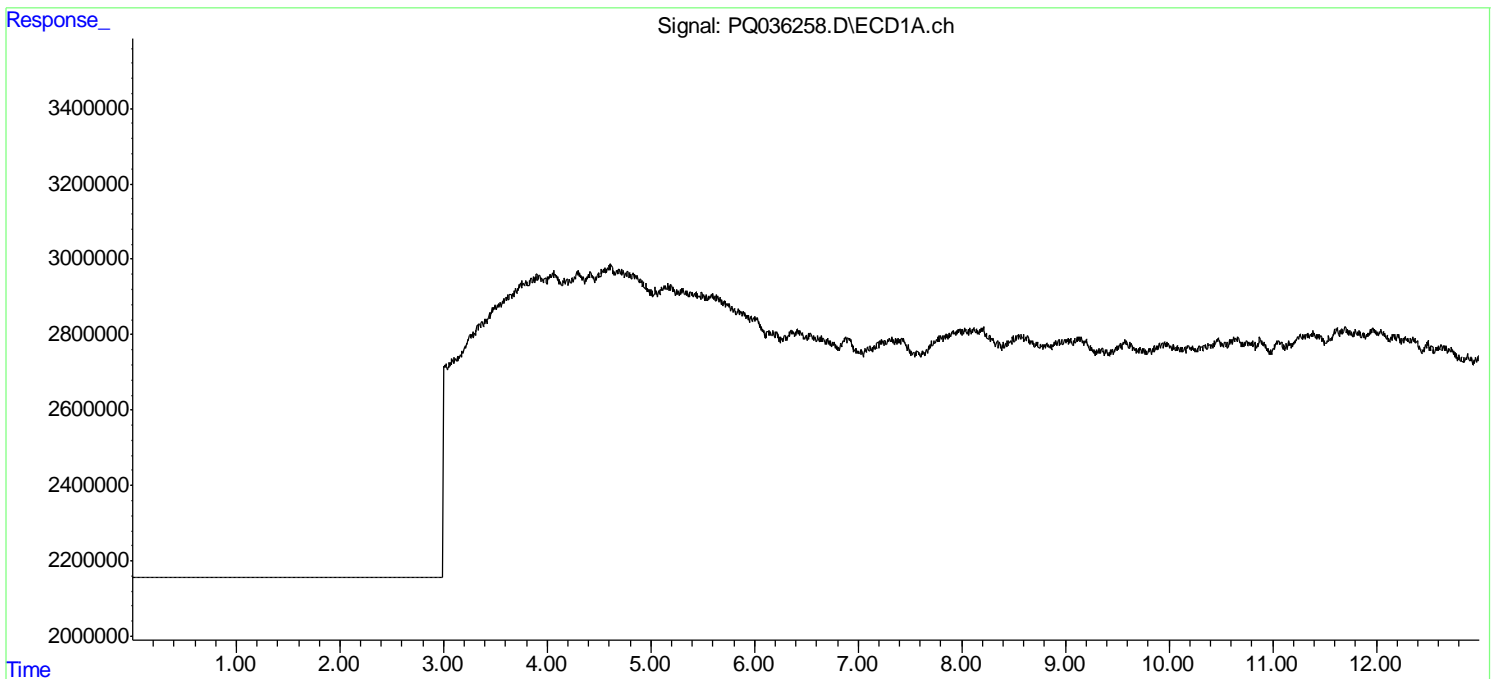
(f)=RT Delta > 1/2 Window (#)=Amounts differ by > 25% (m)=manual int.

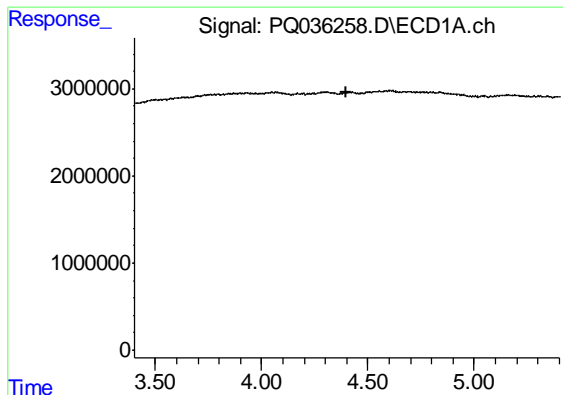
Data Path : Z:\pestpcbsrv\HPCHEM1\ECD\_Q\Data\PQ010719\  
 Data File : PQ036258.D  
 Signal(s) : Signal #1: ECD1A.ch Signal #2: ECD2B.ch  
 Acq On : 07 Jan 2019 07:56  
 Operator : SM\SJ  
 Sample : HEXANE  
 Misc :  
 ALS Vial : 1 Sample Multiplier: 1

**Instrument :**  
 ECD\_Q  
**ClientSampled :**  
 HEXANE

Integration File signal 1: autoint1.e  
 Integration File signal 2: autoint2.e  
 Quant Time: Jan 08 00:57:27 2019  
 Quant Method : Z:\pestpcbsrv\HPCHEM1\ECD\_Q\Method\PQ122918.M  
 Quant Title : GC EXTRACTABLES  
 QLast Update : Mon Dec 31 04:01:58 2018  
 Response via : Initial Calibration  
 Integrator: ChemStation

Volume Inj. : 2 µl  
 Signal #1 Phase : ZB-MR1 Signal #2 Phase: ZB-MR2  
 Signal #1 Info : 30Mx0.32mmx 0.50µ Signal #2 Info : 30M x 0.32mm x 0.25µm

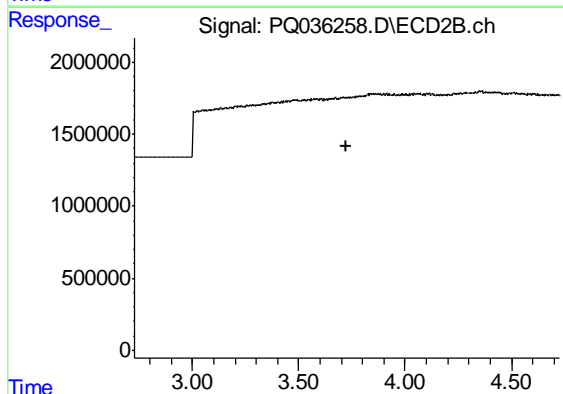




#1 Tetrachloro-m-xylene

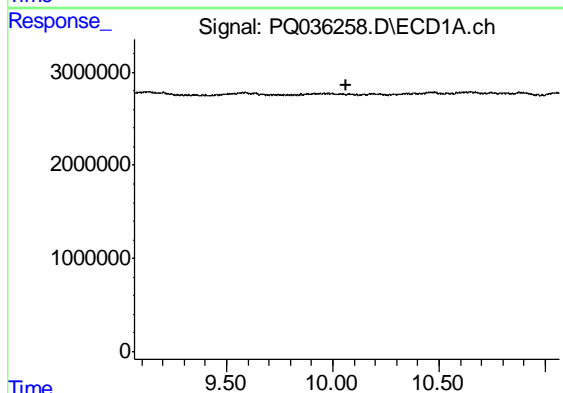
R.T.: 0.000 min  
 Exp R.T. : 4.401 min  
 Response: 0  
 Conc: N.D.

Instrument :  
 ECD\_Q  
 ClientSampleId :  
 HEXANE



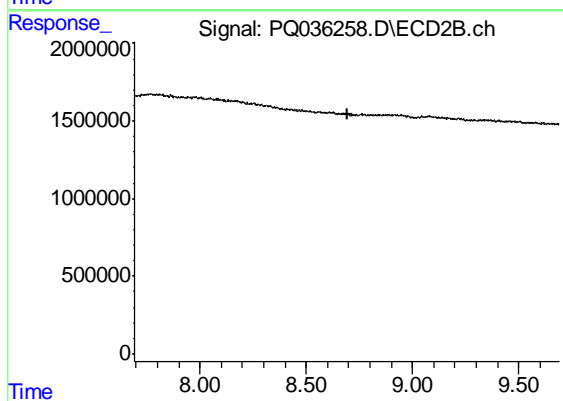
#1 Tetrachloro-m-xylene

R.T.: 0.000 min  
 Exp R.T. : 3.726 min  
 Response: 0  
 Conc: N.D.



#2 Decachlorobiphenyl

R.T.: 0.000 min  
 Exp R.T. : 10.067 min  
 Response: 0  
 Conc: N.D.



#2 Decachlorobiphenyl

R.T.: 0.000 min  
 Exp R.T. : 8.692 min  
 Response: 0  
 Conc: N.D.