

Data Path : Z:\pestpcbsrv\HPCHEM1\ECD\_Q\Data\PQ010819\  
 Data File : PQ036265.D  
 Signal(s) : Signal #1: ECD1A.ch Signal #2: ECD2B.ch  
 Acq On : 08 Jan 2019 08:57  
 Operator : SM\SJ  
 Sample : I.BLK  
 Misc :  
 ALS Vial : 2 Sample Multiplier: 1

Instrument :  
 ECD\_Q  
 ClientSampleId :  
 I.BLK

Integration File signal 1: autoint1.e  
 Integration File signal 2: autoint2.e  
 Quant Time: Jan 09 01:14:38 2019  
 Quant Method : Z:\pestpcbsrv\HPCHEM1\ECD\_Q\Method\PQ010819.M  
 Quant Title : GC EXTRACTABLES  
 QLast Update : Wed Jan 09 01:06:47 2019  
 Response via : Initial Calibration  
 Integrator: ChemStation

Volume Inj. : 2 µl  
 Signal #1 Phase : ZB-MR1 Signal #2 Phase: ZB-MR2  
 Signal #1 Info : 30Mx0.32mmx 0.50µ Signal #2 Info : 30M x 0.32mm x 0.25µm

Compound	RT#1	RT#2	Resp#1	Resp#2	ng/ml	ng/ml
-----						
System Monitoring Compounds						
1) SA Tetrachlo...	4.391	3.723	76838758	38759131	16.808	16.013
2) SA Decachlor...	10.048	8.684	86355228	42071579	23.740	21.885

Target Compounds

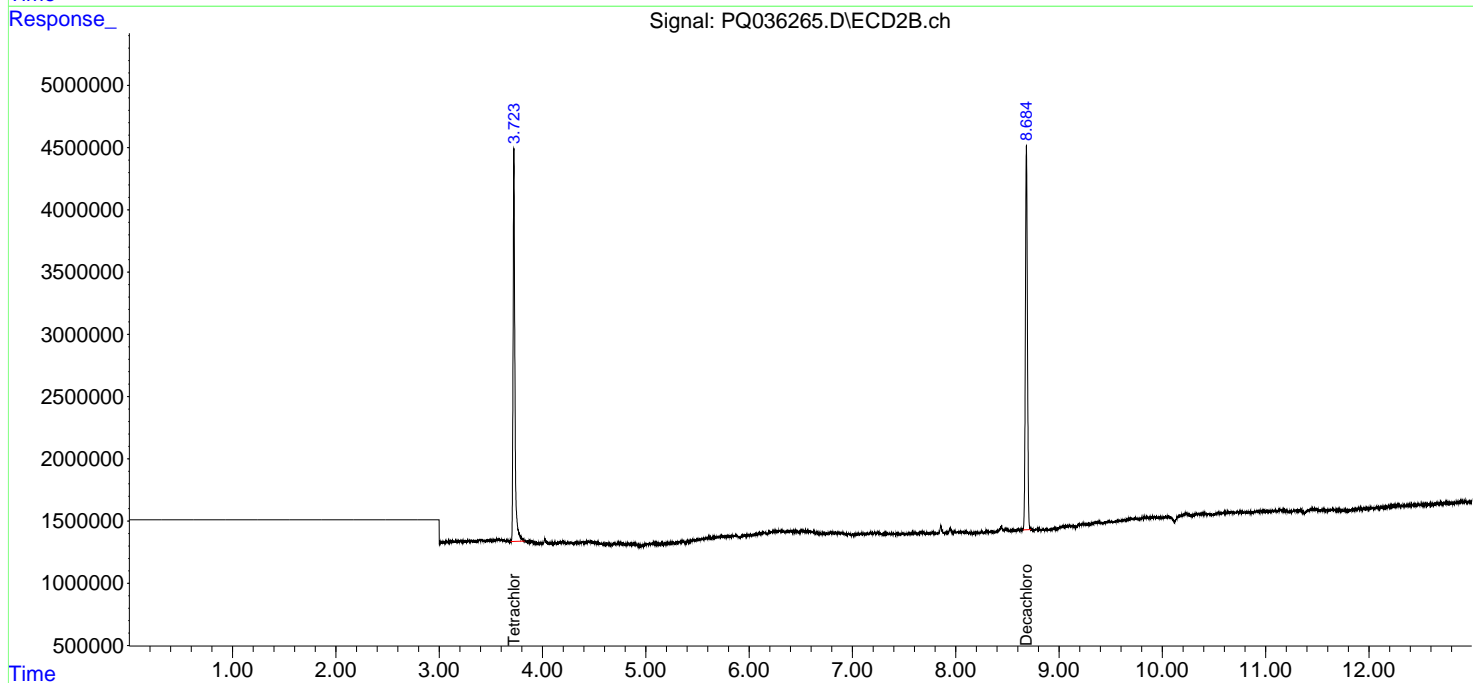
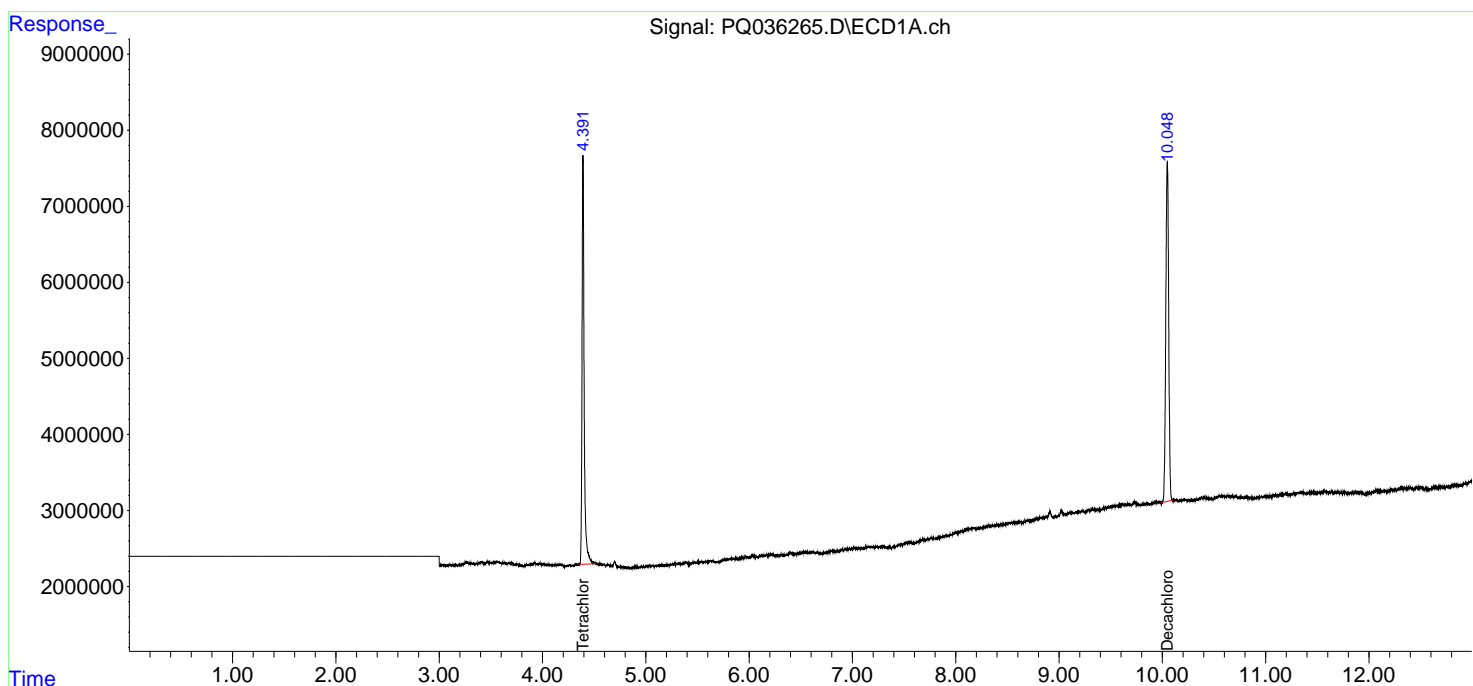
(f)=RT Delta > 1/2 Window (#)=Amounts differ by > 25% (m)=manual int.

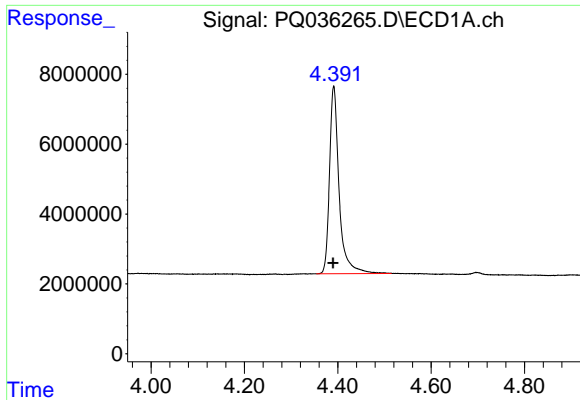
Data Path : Z:\pestpcbsrv\HPCHEM1\ECD\_Q\Data\PQ010819\  
 Data File : PQ036265.D  
 Signal(s) : Signal #1: ECD1A.ch Signal #2: ECD2B.ch  
 Acq On : 08 Jan 2019 08:57  
 Operator : SM\SJ  
 Sample : I.BLK  
 Misc :  
 ALS Vial : 2 Sample Multiplier: 1

Instrument :  
 ECD\_Q  
 ClientSampled :  
 I.BLK

Integration File signal 1: autoint1.e  
 Integration File signal 2: autoint2.e  
 Quant Time: Jan 09 01:14:38 2019  
 Quant Method : Z:\pestpcbsrv\HPCHEM1\ECD\_Q\Method\PQ010819.M  
 Quant Title : GC EXTRACTABLES  
 QLast Update : Wed Jan 09 01:06:47 2019  
 Response via : Initial Calibration  
 Integrator: ChemStation

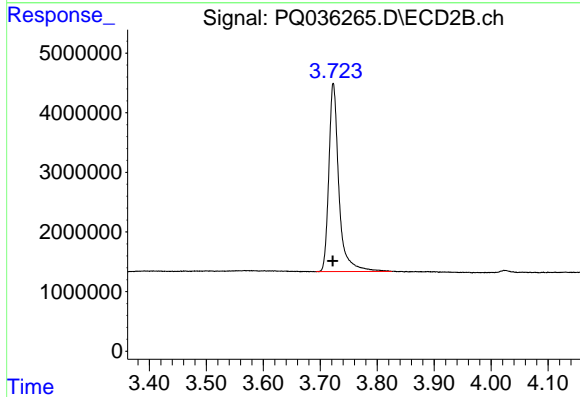
Volume Inj. : 2 µl  
 Signal #1 Phase : ZB-MR1 Signal #2 Phase: ZB-MR2  
 Signal #1 Info : 30Mx0.32mmx 0.50µ Signal #2 Info : 30M x 0.32mm x 0.25µm



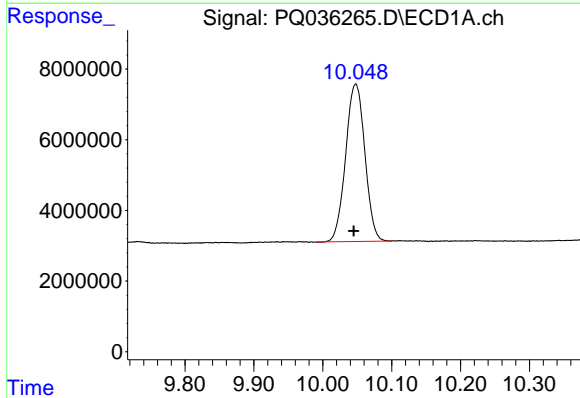


#1 Tetrachloro-m-xylene  
R.T.: 4.391 min  
Delta R.T.: 0.001 min  
Response: 76838758  
Conc: 16.81 ng/ml

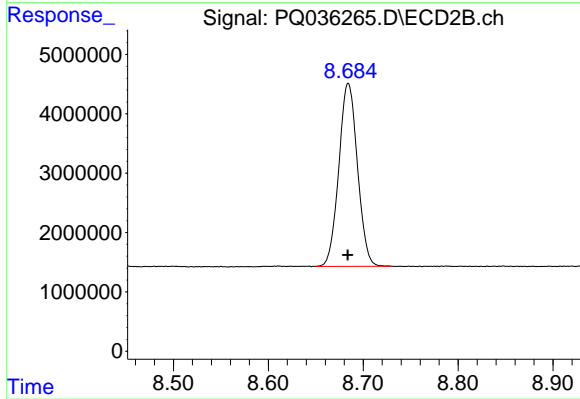
Instrument :  
ECD\_Q  
ClientSampleId :  
I.BLK



#1 Tetrachloro-m-xylene  
R.T.: 3.723 min  
Delta R.T.: 0.001 min  
Response: 38759131  
Conc: 16.01 ng/ml



#2 Decachlorobiphenyl  
R.T.: 10.048 min  
Delta R.T.: 0.003 min  
Response: 86355228  
Conc: 23.74 ng/ml



#2 Decachlorobiphenyl  
R.T.: 8.684 min  
Delta R.T.: 0.000 min  
Response: 42071579  
Conc: 21.88 ng/ml