

Data Path : Z:\pestpcbsrv\HPCHEM1\ECD_Q\Data\PQ010819\
 Data File : PQ036269.D
 Signal(s) : Signal #1: ECD1A.ch Signal #2: ECD2B.ch
 Acq On : 08 Jan 2019 09:59
 Operator : SM\SJ
 Sample : AR1660ICC250
 Misc :
 ALS Vial : 6 Sample Multiplier: 1

Instrument :
 ECD_Q
 ClientSampleId :
 AR1660ICC250

Integration File signal 1: autoint1.e
 Integration File signal 2: autoint2.e
 Quant Time: Jan 08 11:06:02 2019
 Quant Method : Z:\pestpcbsrv\HPCHEM1\ECD_Q\Method\PQ010819.M
 Quant Title : GC EXTRACTABLES
 QLast Update : Tue Jan 08 11:04:45 2019
 Response via : Initial Calibration
 Integrator: ChemStation

Volume Inj. : 2 µl
 Signal #1 Phase : ZB-MR1 Signal #2 Phase: ZB-MR2
 Signal #1 Info : 30Mx0.32mmx 0.50µ Signal #2 Info : 30M x 0.32mm x 0.25µm

Compound	RT#1	RT#2	Resp#1	Resp#2	ng/ml	ng/ml

System Monitoring Compounds						
1) SA Tetrachlo...	4.389	3.721	113.0E6	60375549	23.711	23.940
2) SA Decachlor...	10.044	8.683	90533854	47722448	24.999	25.451
Target Compounds						
3) L1 AR-1016-1	5.551	4.798	34994601	19695297	249.236	250.176
4) L1 AR-1016-2	5.572	4.814	52729664	28976872	249.703	253.137
5) L1 AR-1016-3	5.634	4.991	30734870	14824214	249.677	252.702
6) L1 AR-1016-4	5.733	5.030	25211722	12435317	248.990	261.991
7) L1 AR-1016-5	6.024	5.243	25317983	15527857	255.409	255.454
31) L7 AR-1260-1	7.142	6.263	46915050	29402404	253.827	256.403
32) L7 AR-1260-2	7.397	6.450	56186376	35398238	253.144	256.417
33) L7 AR-1260-3	7.755	6.603	34722637	32633823	255.628	254.224
34) L7 AR-1260-4	7.983	7.069	42288486	22251273	252.911	254.169
35) L7 AR-1260-5	8.300	7.312	81501761	53758944	247.541	243.712

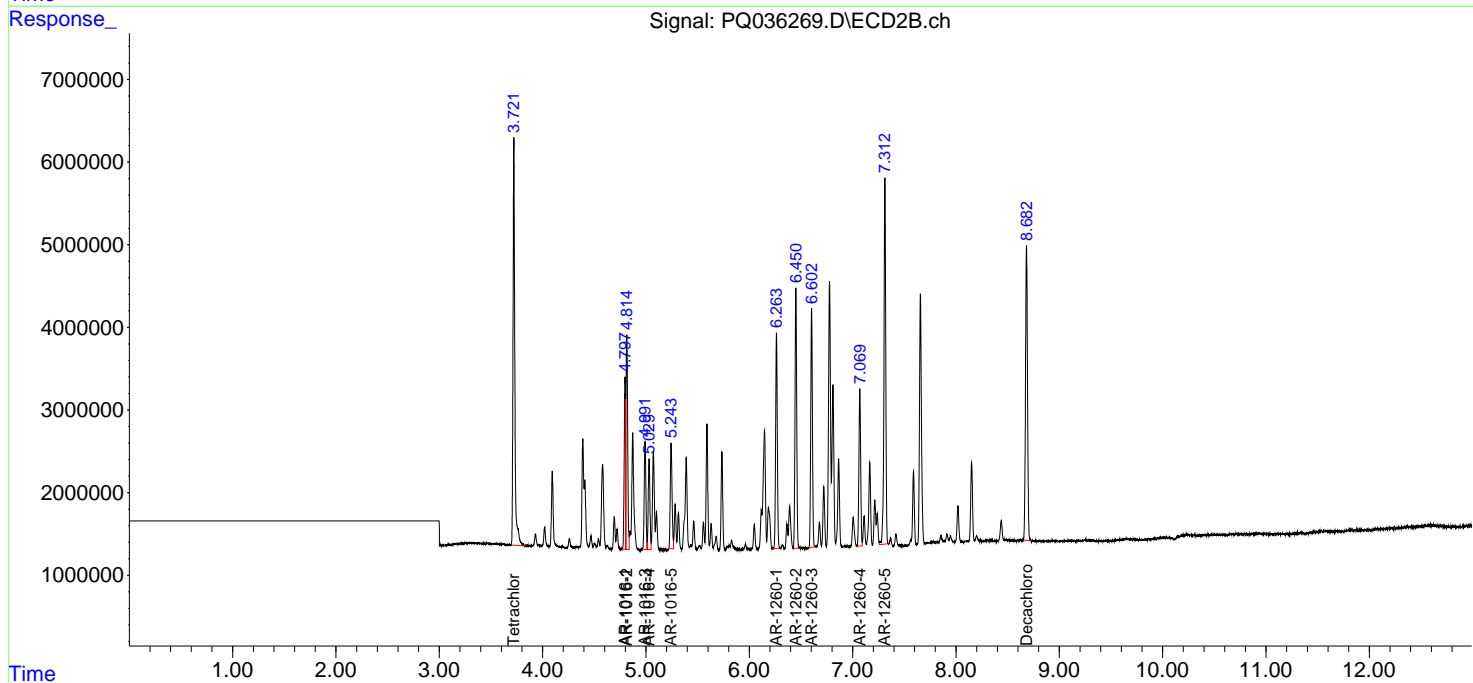
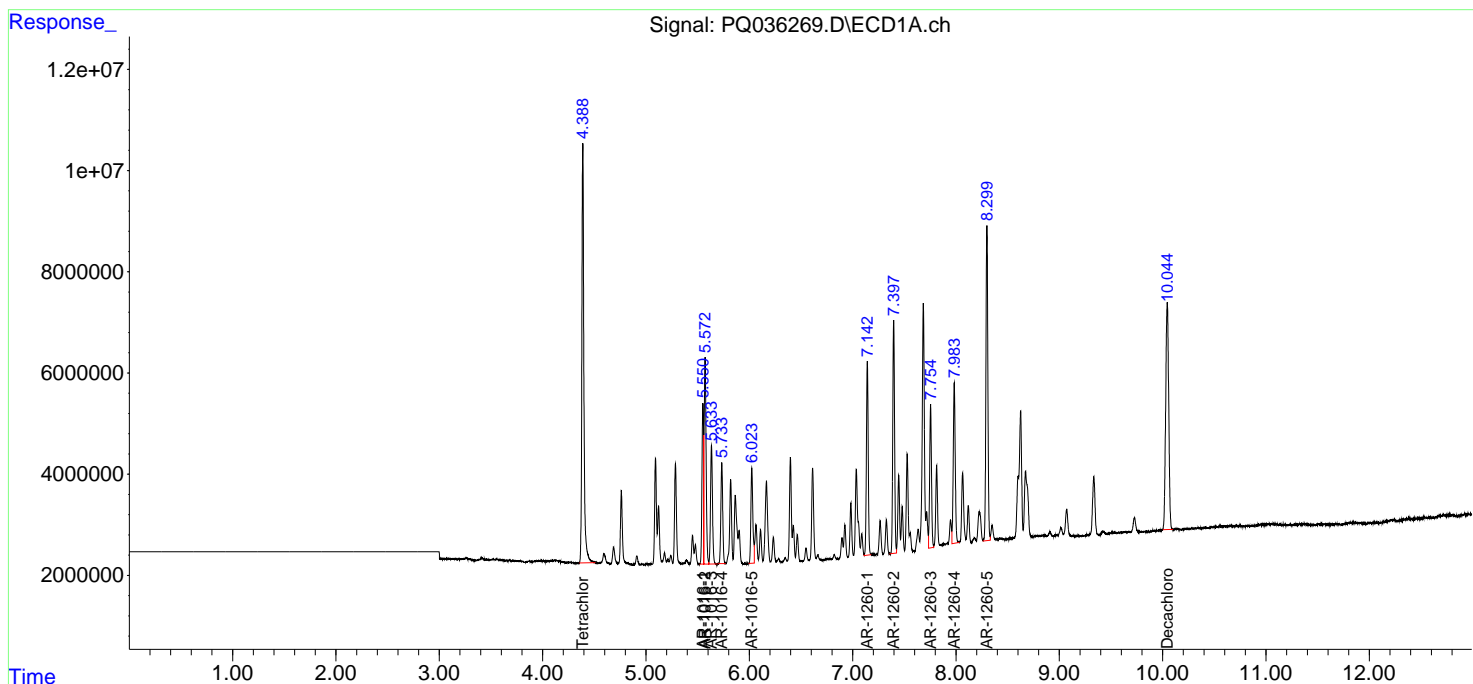
(f)=RT Delta > 1/2 Window (#)=Amounts differ by > 25% (m)=manual int.

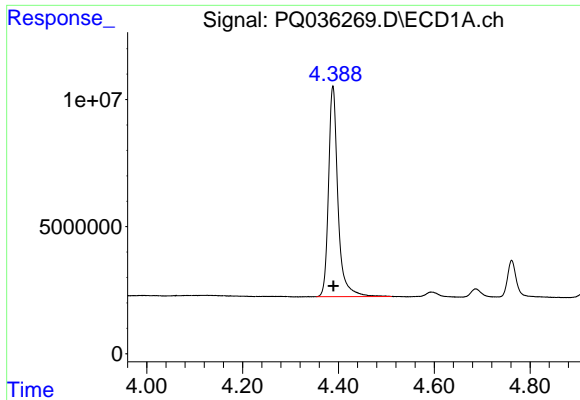
Data Path : Z:\pestpcbsrv\HPCHEM1\ECD_Q\Data\PQ010819\
 Data File : PQ036269.D
 Signal(s) : Signal #1: ECD1A.ch Signal #2: ECD2B.ch
 Acq On : 08 Jan 2019 09:59
 Operator : SM\SJ
 Sample : AR1660ICC250
 Misc :
 ALS Vial : 6 Sample Multiplier: 1

Instrument :
 ECD_Q
 Client Sampled :
 AR1660ICC250

Integration File signal 1: autoint1.e
 Integration File signal 2: autoint2.e
 Quant Time: Jan 08 11:06:02 2019
 Quant Method : Z:\pestpcbsrv\HPCHEM1\ECD_Q\Method\PQ010819.M
 Quant Title : GC EXTRACTABLES
 QLast Update : Tue Jan 08 11:04:45 2019
 Response via : Initial Calibration
 Integrator: ChemStation

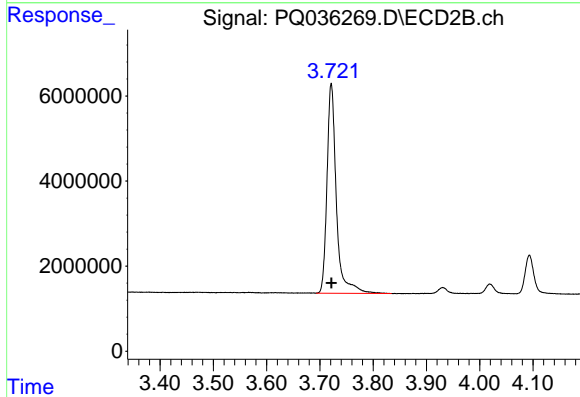
Volume Inj. : 2 µl
 Signal #1 Phase : ZB-MR1 Signal #2 Phase: ZB-MR2
 Signal #1 Info : 30Mx0.32mmx 0.50µ Signal #2 Info : 30M x 0.32mm x 0.25µm



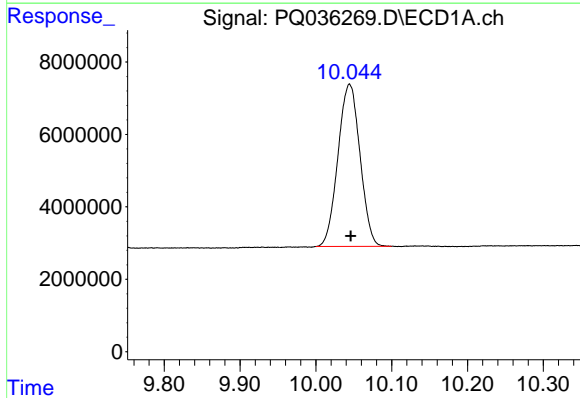


#1 Tetrachloro-m-xylene
 R.T.: 4.389 min
 Delta R.T.: -0.001 min
 Response: 112966502
 Conc: 23.71 ng/ml

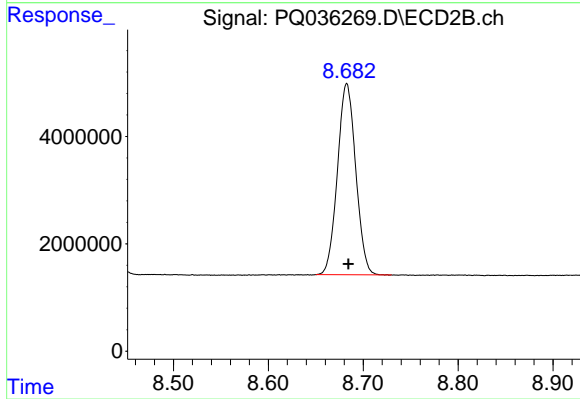
Instrument :
 ECD_Q
 ClientSampleId :
 AR1660ICC250



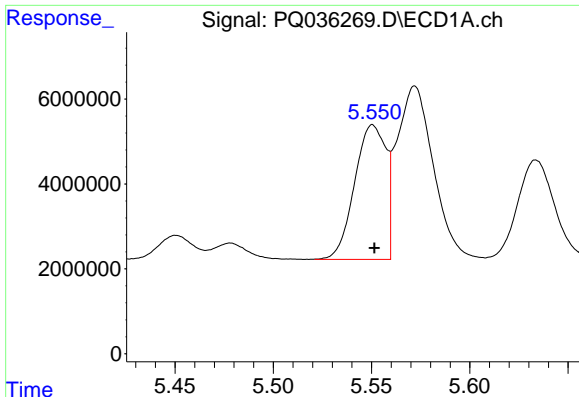
#1 Tetrachloro-m-xylene
 R.T.: 3.721 min
 Delta R.T.: 0.000 min
 Response: 60375549
 Conc: 23.94 ng/ml



#2 Decachlorobiphenyl
 R.T.: 10.044 min
 Delta R.T.: -0.002 min
 Response: 90533854
 Conc: 25.00 ng/ml



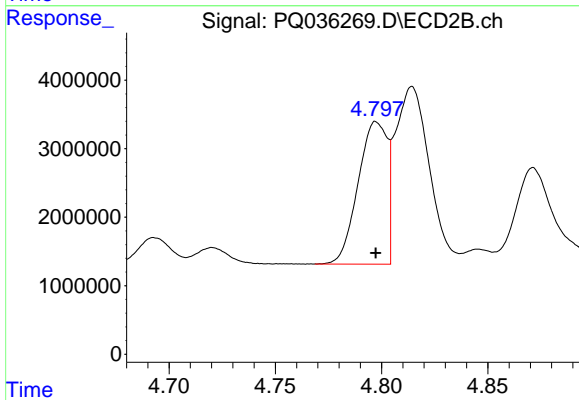
#2 Decachlorobiphenyl
 R.T.: 8.683 min
 Delta R.T.: -0.002 min
 Response: 47722448
 Conc: 25.45 ng/ml



#3 AR-1016-1

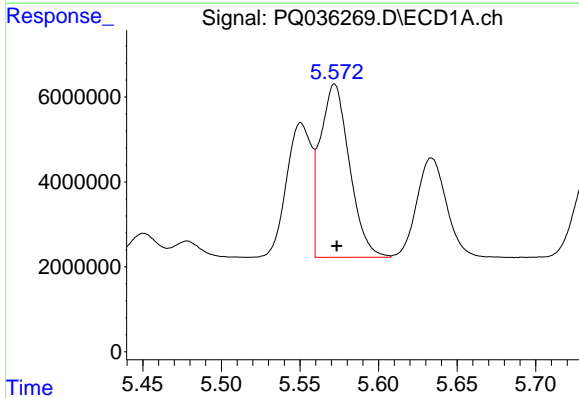
R.T.: 5.551 min
 Delta R.T.: 0.000 min
 Response: 34994601
 Conc: 249.24 ng/ml

Instrument :
 ECD_Q
 ClientSampleId :
 AR1660ICC250



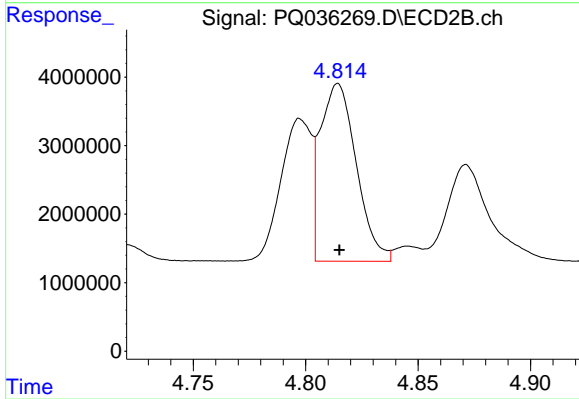
#3 AR-1016-1

R.T.: 4.798 min
 Delta R.T.: 0.000 min
 Response: 19695297
 Conc: 250.18 ng/ml



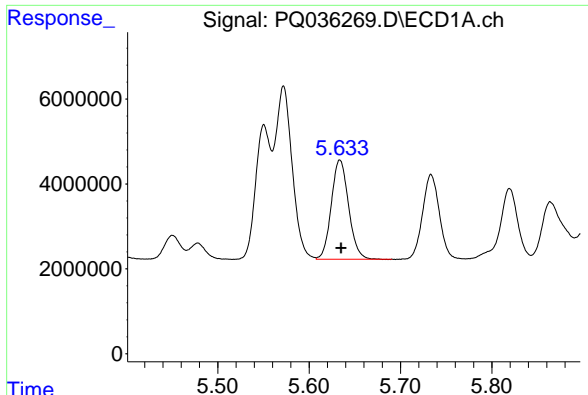
#4 AR-1016-2

R.T.: 5.572 min
 Delta R.T.: -0.001 min
 Response: 52729664
 Conc: 249.70 ng/ml



#4 AR-1016-2

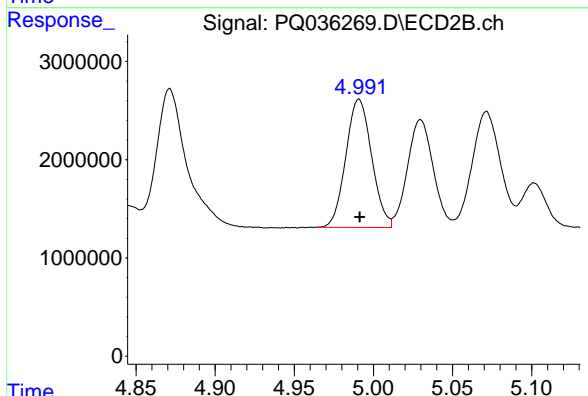
R.T.: 4.814 min
 Delta R.T.: 0.000 min
 Response: 28976872
 Conc: 253.14 ng/ml



#5 AR-1016-3

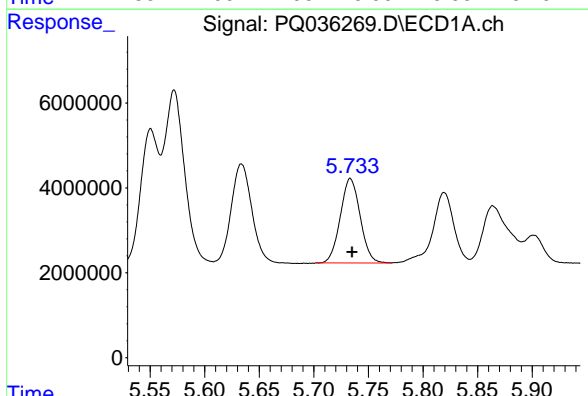
R.T.: 5.634 min
 Delta R.T.: -0.001 min
 Response: 30734870
 Conc: 249.68 ng/ml

Instrument :
 ECD_Q
 ClientSampleId :
 AR1660ICC250



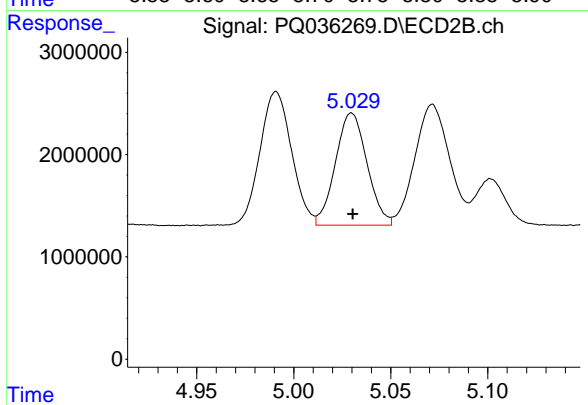
#5 AR-1016-3

R.T.: 4.991 min
 Delta R.T.: 0.000 min
 Response: 14824214
 Conc: 252.70 ng/ml



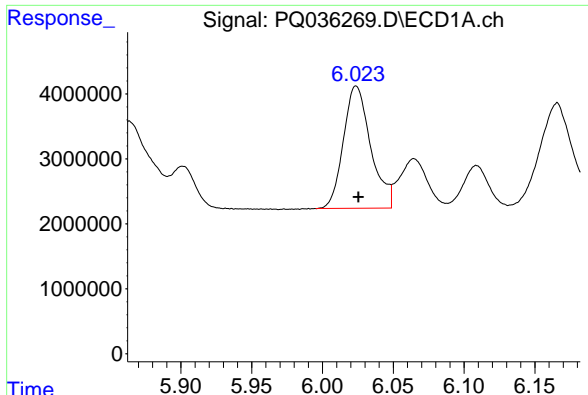
#6 AR-1016-4

R.T.: 5.733 min
 Delta R.T.: -0.002 min
 Response: 25211722
 Conc: 248.99 ng/ml



#6 AR-1016-4

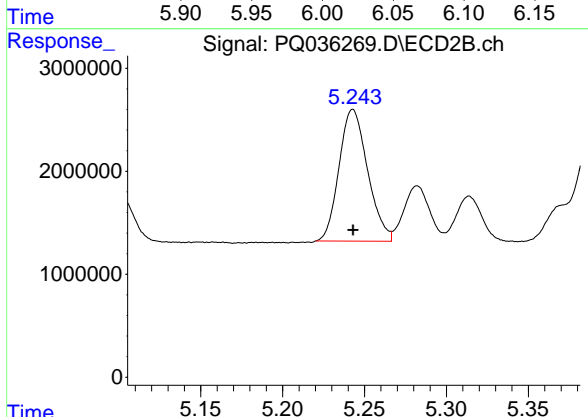
R.T.: 5.030 min
 Delta R.T.: 0.000 min
 Response: 12435317
 Conc: 261.99 ng/ml



#7 AR-1016-5

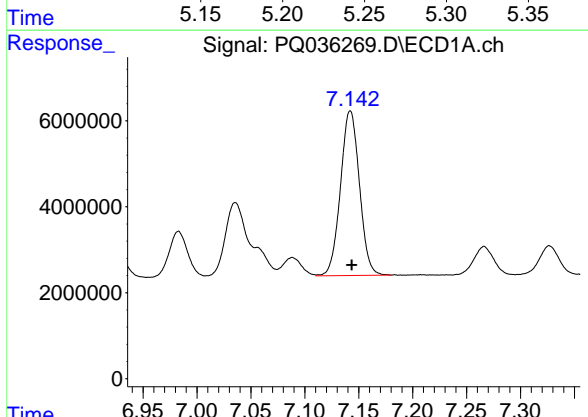
R.T.: 6.024 min
 Delta R.T.: -0.002 min
 Response: 25317983
 Conc: 255.41 ng/ml

Instrument :
 ECD_Q
 ClientSampleId :
 AR1660ICC250



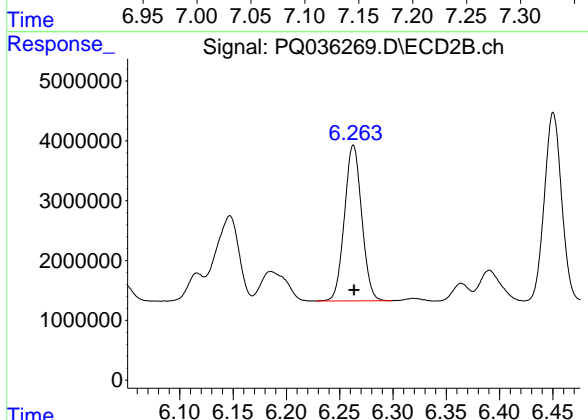
#7 AR-1016-5

R.T.: 5.243 min
 Delta R.T.: 0.000 min
 Response: 15527857
 Conc: 255.45 ng/ml



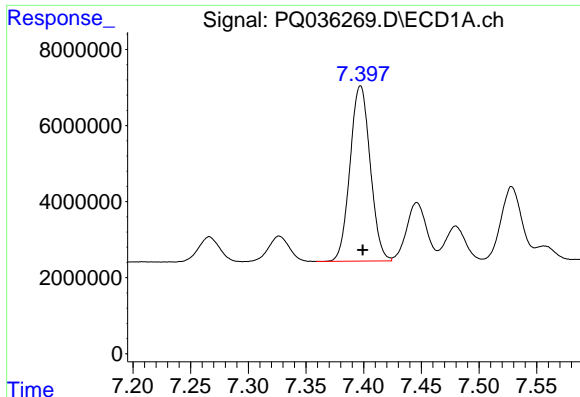
#31 AR-1260-1

R.T.: 7.142 min
 Delta R.T.: -0.001 min
 Response: 46915050
 Conc: 253.83 ng/ml



#31 AR-1260-1

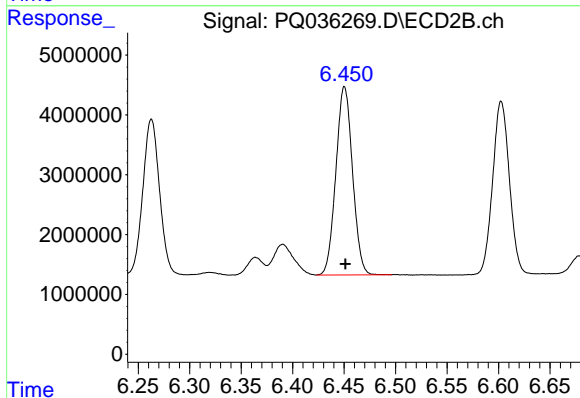
R.T.: 6.263 min
 Delta R.T.: 0.000 min
 Response: 29402404
 Conc: 256.40 ng/ml



#32 AR-1260-2

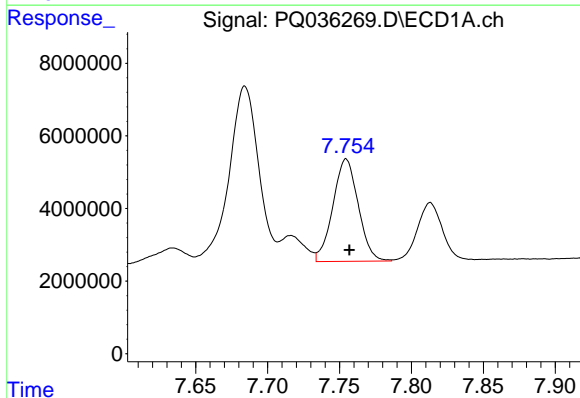
R.T.: 7.397 min
Delta R.T.: -0.002 min
Response: 56186376
Conc: 253.14 ng/ml

Instrument :
ECD_Q
ClientSampleId :
AR1660ICC250



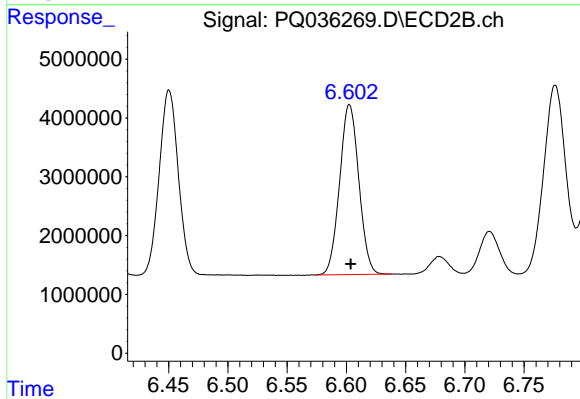
#32 AR-1260-2

R.T.: 6.450 min
Delta R.T.: 0.000 min
Response: 35398238
Conc: 256.42 ng/ml



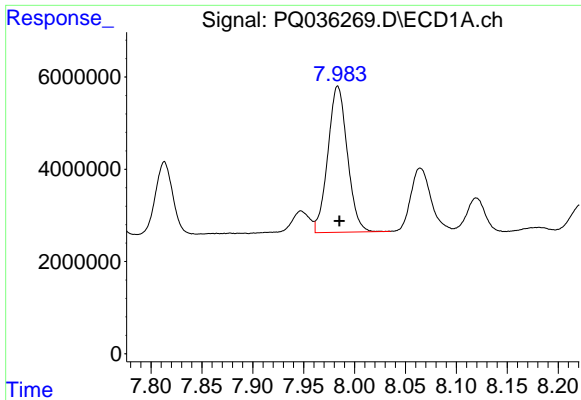
#33 AR-1260-3

R.T.: 7.755 min
Delta R.T.: -0.002 min
Response: 34722637
Conc: 255.63 ng/ml



#33 AR-1260-3

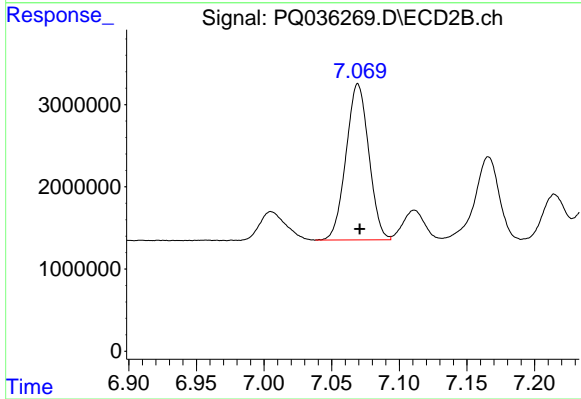
R.T.: 6.603 min
Delta R.T.: -0.001 min
Response: 32633823
Conc: 254.22 ng/ml



#34 AR-1260-4

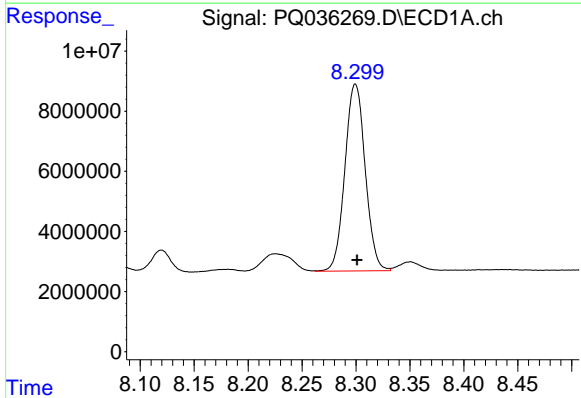
R.T.: 7.983 min
Delta R.T.: -0.002 min
Response: 42288486
Conc: 252.91 ng/ml

Instrument :
ECD_Q
ClientSampled :
AR1660ICC250



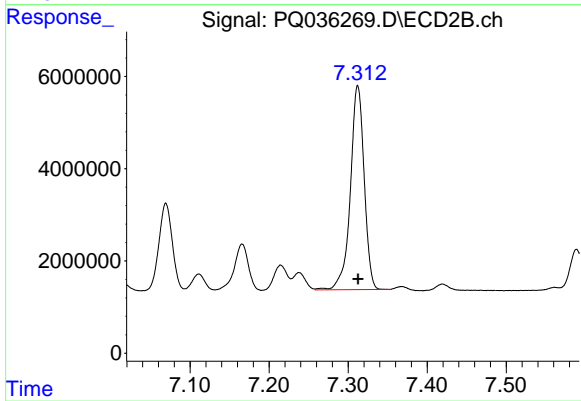
#34 AR-1260-4

R.T.: 7.069 min
Delta R.T.: -0.001 min
Response: 22251273
Conc: 254.17 ng/ml



#35 AR-1260-5

R.T.: 8.300 min
Delta R.T.: -0.002 min
Response: 81501761
Conc: 247.54 ng/ml



#35 AR-1260-5

R.T.: 7.312 min
Delta R.T.: 0.000 min
Response: 53758944
Conc: 243.71 ng/ml