

Data Path : Z:\pestpcbsrv\HPCHEM1\ECD_Q\Data\PQ010819\
 Data File : PQ036271.D
 Signal(s) : Signal #1: ECD1A.ch Signal #2: ECD2B.ch
 Acq On : 08 Jan 2019 10:30
 Operator : SM\SJ
 Sample : AR1221ICC500
 Misc :
 ALS Vial : 8 Sample Multiplier: 1

Instrument :
 ECD_Q
 ClientSampleId :
 AR1221ICC500

Integration File signal 1: autoint1.e
 Integration File signal 2: autoint2.e
 Quant Time: Jan 08 12:28:23 2019
 Quant Method : Z:\pestpcbsrv\HPCHEM1\ECD_Q\Method\PQ010819.M
 Quant Title : GC EXTRACTABLES
 QLast Update : Tue Jan 08 12:28:06 2019
 Response via : Initial Calibration
 Integrator: ChemStation

Volume Inj. : 2 µl
 Signal #1 Phase : ZB-MR1 Signal #2 Phase: ZB-MR2
 Signal #1 Info : 30Mx0.32mmx 0.50µ Signal #2 Info : 30M x 0.32mm x 0.25µm

Compound	RT#1	RT#2	Resp#1	Resp#2	ng/ml	ng/ml

System Monitoring Compounds						
1) SA Tetrachlo...	4.390	3.723	179.3E6	97084740	50.000	50.000
2) SA Decachlor...	10.044	8.683	152.1E6	80363563	50.000	50.000
Target Compounds						
8) L2 AR-1221-1	4.599	3.933	17671977	9811032	500.000	500.000
9) L2 AR-1221-2	4.686	4.019	13281697	7410417	500.000	500.000
10) L2 AR-1221-3	4.762	4.094	44573182	24718973	500.000	500.000

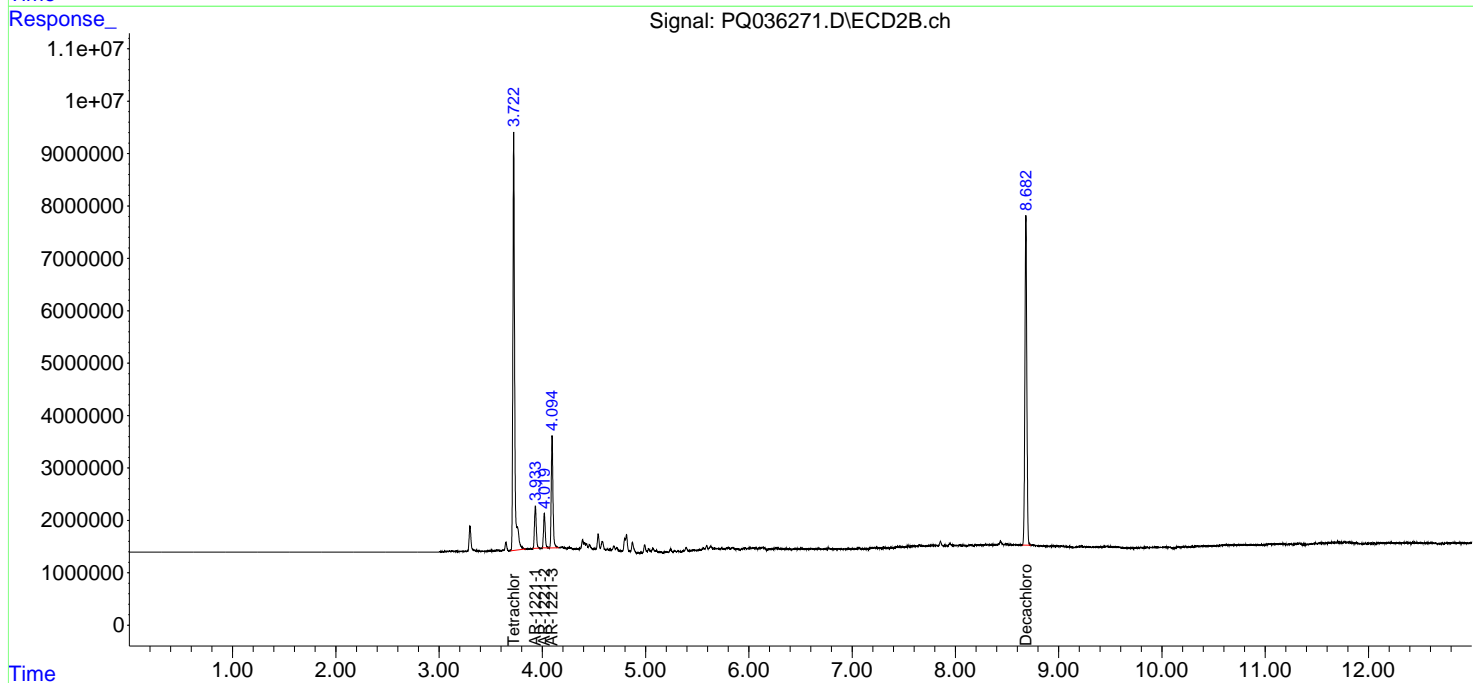
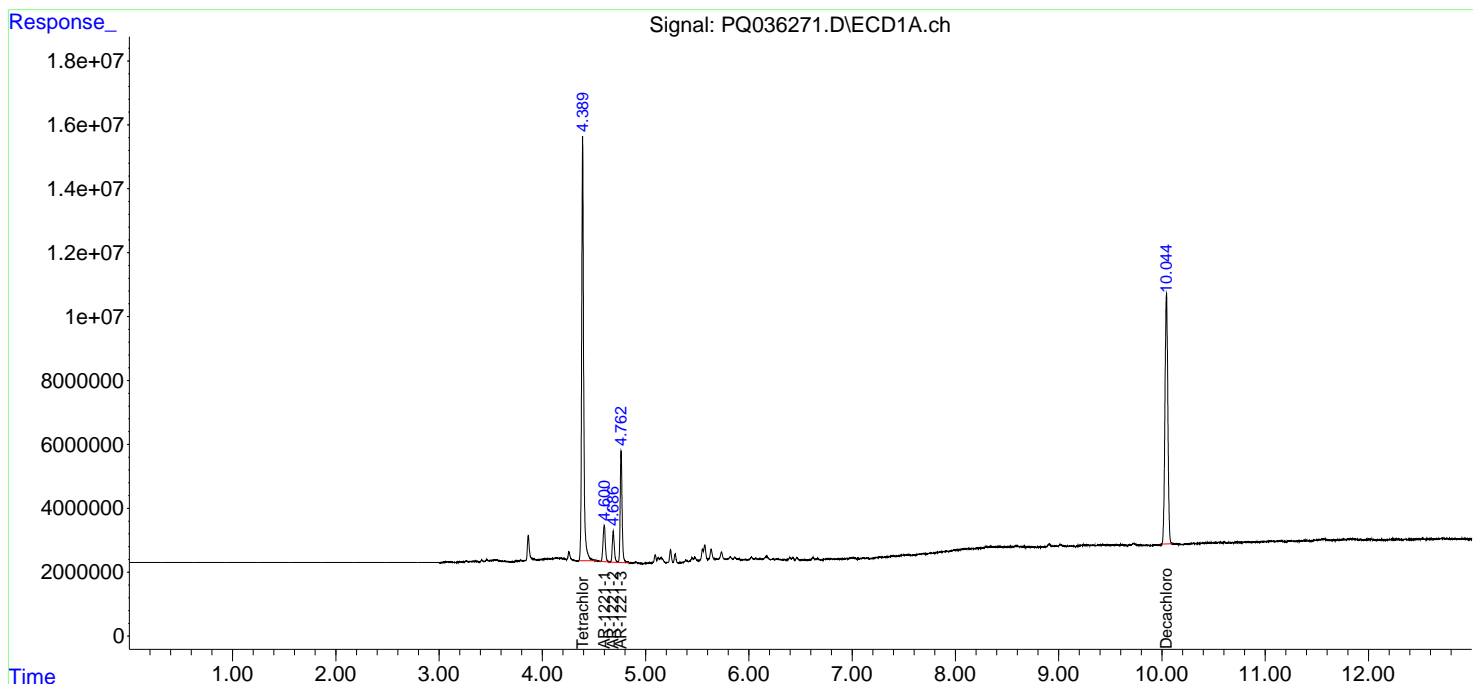
(f)=RT Delta > 1/2 Window (#)=Amounts differ by > 25% (m)=manual int.

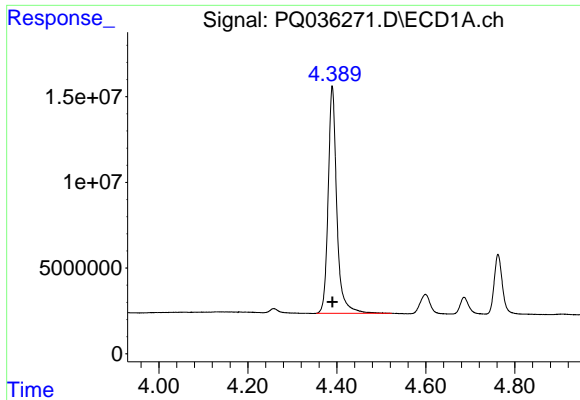
Data Path : Z:\pestpcbsrv\HPCHEM1\ECD_Q\Data\PQ010819\
 Data File : PQ036271.D
 Signal(s) : Signal #1: ECD1A.ch Signal #2: ECD2B.ch
 Acq On : 08 Jan 2019 10:30
 Operator : SM\SJ
 Sample : AR1221ICC500
 Misc :
 ALS Vial : 8 Sample Multiplier: 1

Instrument :
 ECD_Q
 ClientSampled :
 AR1221ICC500

Integration File signal 1: autoint1.e
 Integration File signal 2: autoint2.e
 Quant Time: Jan 08 12:28:23 2019
 Quant Method : Z:\pestpcbsrv\HPCHEM1\ECD_Q\Method\PQ010819.M
 Quant Title : GC EXTRACTABLES
 QLast Update : Tue Jan 08 12:28:06 2019
 Response via : Initial Calibration
 Integrator: ChemStation

Volume Inj. : 2 µl
 Signal #1 Phase : ZB-MR1 Signal #2 Phase: ZB-MR2
 Signal #1 Info : 30Mx0.32mmx 0.50µ Signal #2 Info : 30M x 0.32mm x 0.25µm

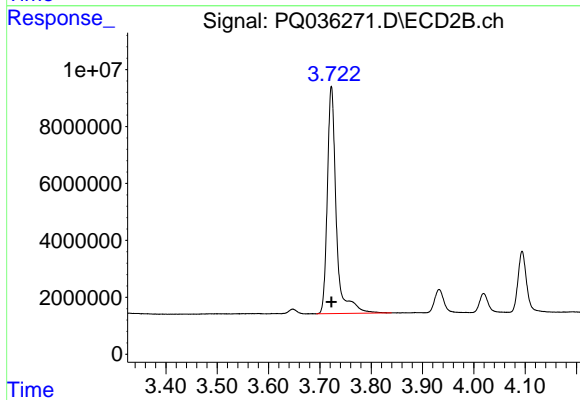




#1 Tetrachloro-m-xylene

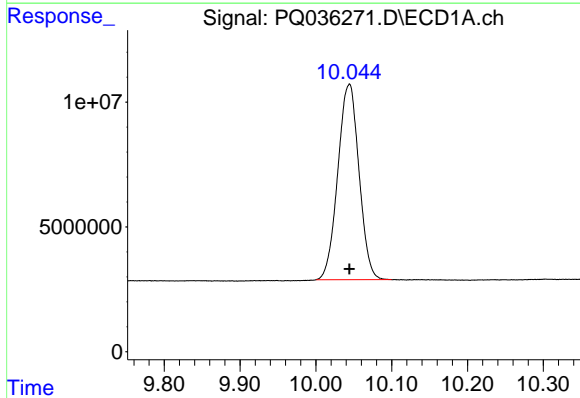
R.T.: 4.390 min
 Delta R.T.: 0.000 min
 Response: 179276977
 Conc: 50.00 ng/ml

Instrument :
 ECD_Q
 ClientSampleId :
 AR1221ICC500



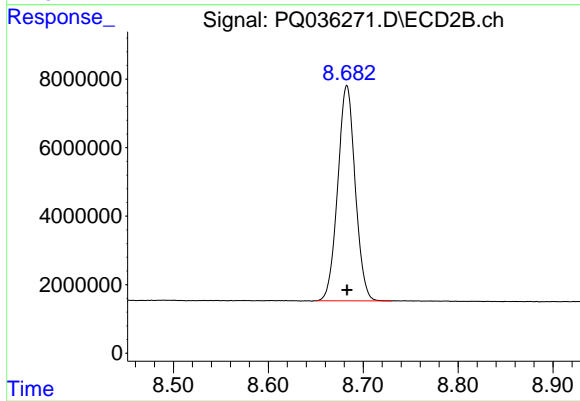
#1 Tetrachloro-m-xylene

R.T.: 3.723 min
 Delta R.T.: 0.000 min
 Response: 97084740
 Conc: 50.00 ng/ml



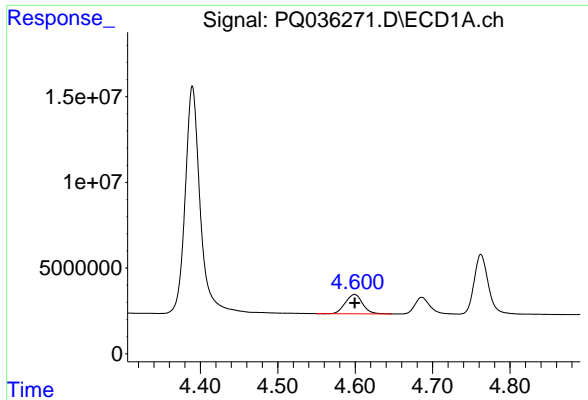
#2 Decachlorobiphenyl

R.T.: 10.044 min
 Delta R.T.: 0.000 min
 Response: 152140778
 Conc: 50.00 ng/ml



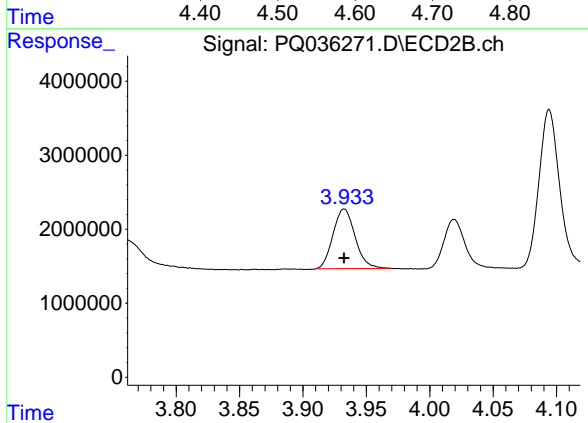
#2 Decachlorobiphenyl

R.T.: 8.683 min
 Delta R.T.: 0.000 min
 Response: 80363563
 Conc: 50.00 ng/ml

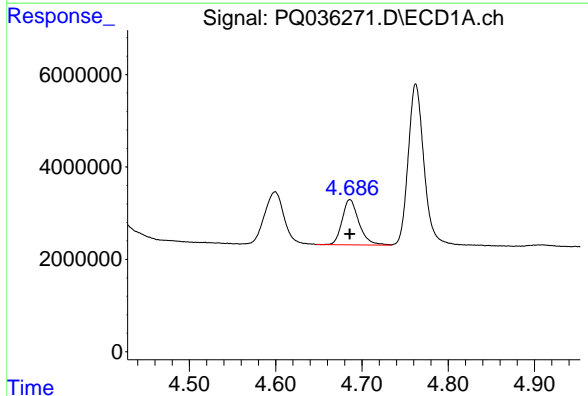


#8 AR-1221-1
 R.T.: 4.599 min
 Delta R.T.: 0.000 min
 Response: 17671977
 Conc: 500.00 ng/ml

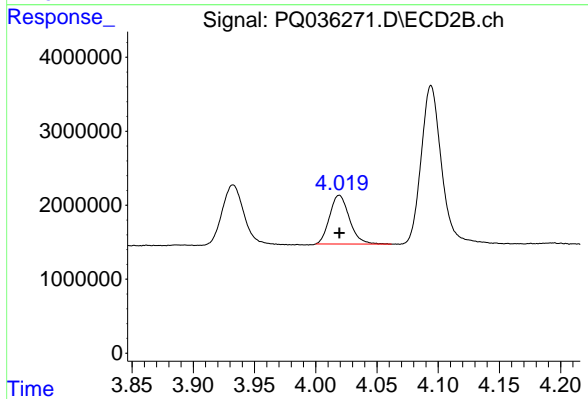
Instrument :
 ECD_Q
 ClientSampleId :
 AR1221ICC500



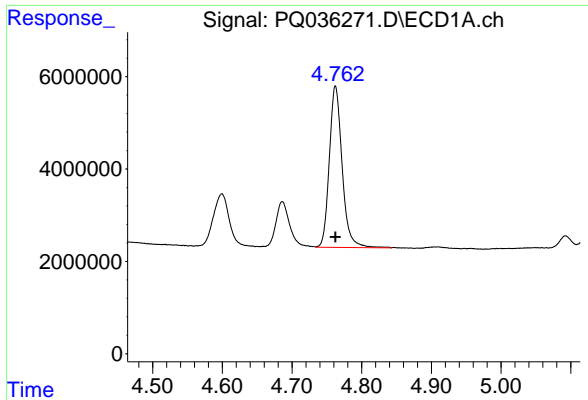
#8 AR-1221-1
 R.T.: 3.933 min
 Delta R.T.: 0.000 min
 Response: 9811032
 Conc: 500.00 ng/ml



#9 AR-1221-2
 R.T.: 4.686 min
 Delta R.T.: 0.000 min
 Response: 13281697
 Conc: 500.00 ng/ml



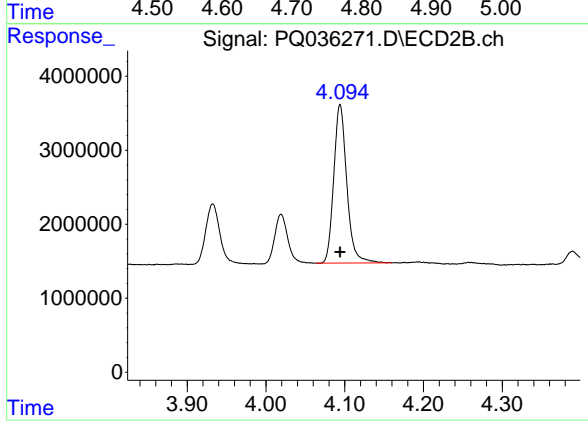
#9 AR-1221-2
 R.T.: 4.019 min
 Delta R.T.: 0.000 min
 Response: 7410417
 Conc: 500.00 ng/ml



#10 AR-1221-3

R.T.: 4.762 min
Delta R.T.: 0.000 min
Response: 44573182
Conc: 500.00 ng/ml

Instrument :
ECD_Q
ClientSampled :
AR1221ICC500



#10 AR-1221-3

R.T.: 4.094 min
Delta R.T.: 0.000 min
Response: 24718973
Conc: 500.00 ng/ml