

Data Path : Z:\pestpcbsrv\HPCHEM1\ECD_Q\Data\PQ010819\
 Data File : PQ036298.D
 Signal(s) : Signal #1: ECD1A.ch Signal #2: ECD2B.ch
 Acq On : 09 Jan 2019 01:49
 Operator : SM\SJ
 Sample : K1072-03
 Misc :
 ALS Vial : 18 Sample Multiplier: 1

Instrument :
 ECD_Q
 ClientSampleId :
 TRANSFORMER-PIERS

Integration File signal 1: autoint1.e
 Integration File signal 2: autoint2.e
 Quant Time: Jan 09 03:37:03 2019
 Quant Method : Z:\pestpcbsrv\HPCHEM1\ECD_Q\Method\PQ010819.M
 Quant Title : GC EXTRACTABLES
 QLast Update : Wed Jan 09 01:06:47 2019
 Response via : Initial Calibration
 Integrator: ChemStation

Volume Inj. : 2 µl
 Signal #1 Phase : ZB-MR1 Signal #2 Phase: ZB-MR2
 Signal #1 Info : 30Mx0.32mmx 0.50µ Signal #2 Info : 30M x 0.32mm x 0.25µm

Compound	RT#1	RT#2	Resp#1	Resp#2	ng/ml	ng/ml

System Monitoring Compounds						
1) SA Tetrachlo...	4.387	3.722	82451031	48383693	18.036	19.989
2) SA Decachlor...	10.038	8.680	57070239	29752156	15.690	15.476

Target Compounds

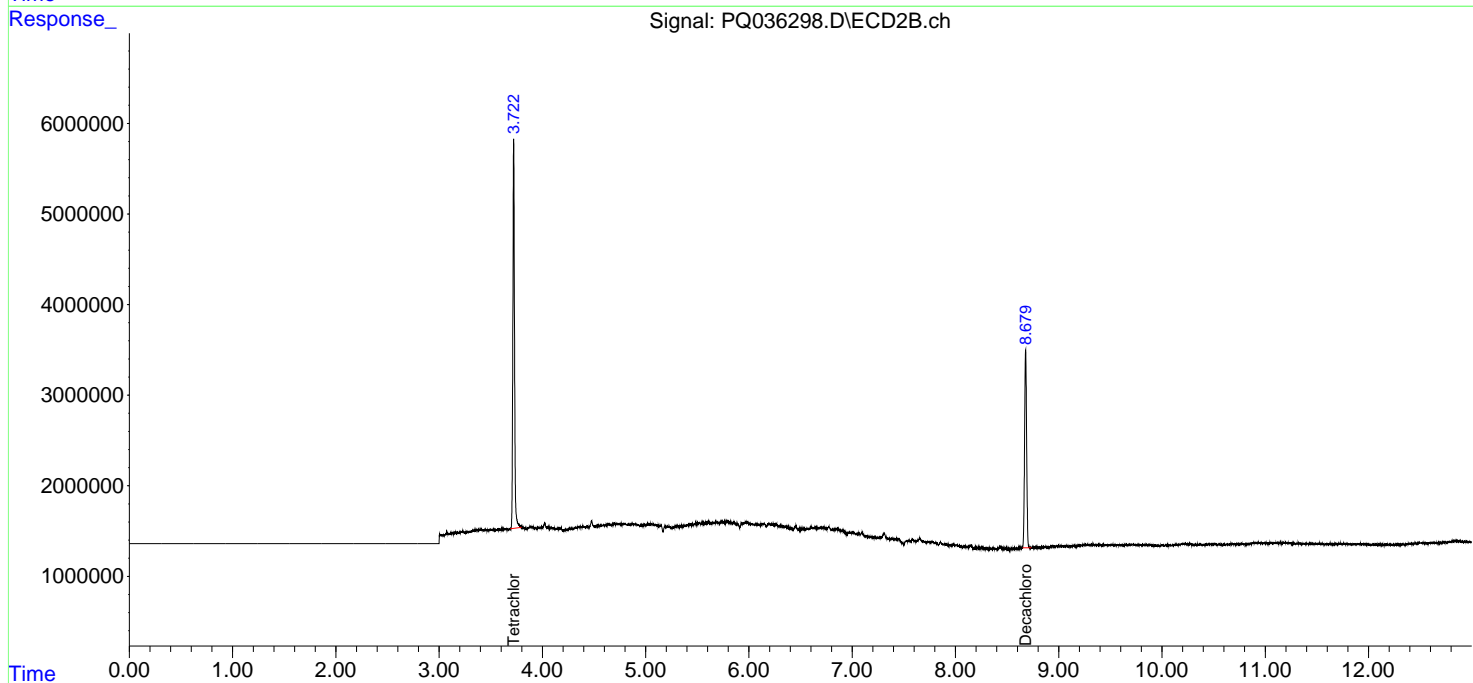
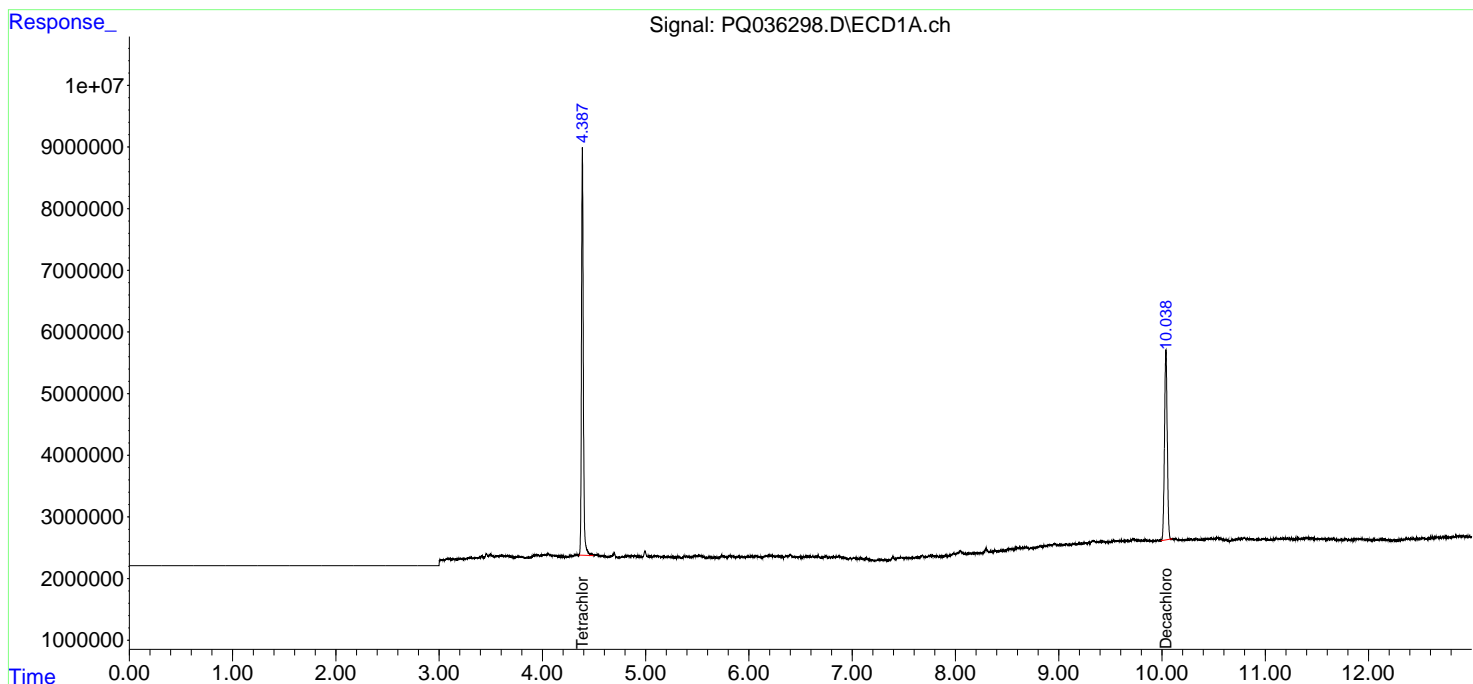
(f)=RT Delta > 1/2 Window (#)=Amounts differ by > 25% (m)=manual int.

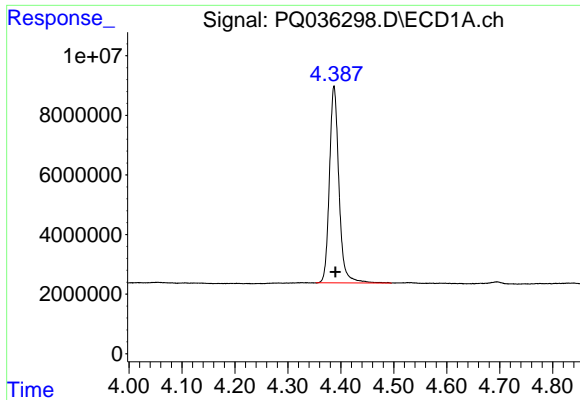
Data Path : Z:\pestpcbsrv\HPCHEM1\ECD_Q\Data\PQ010819\
 Data File : PQ036298.D
 Signal(s) : Signal #1: ECD1A.ch Signal #2: ECD2B.ch
 Acq On : 09 Jan 2019 01:49
 Operator : SM\SJ
 Sample : K1072-03
 Misc :
 ALS Vial : 18 Sample Multiplier: 1

Instrument :
 ECD_Q
 ClientSampleId :
 TRANSFORMER-PIERS

Integration File signal 1: autoint1.e
 Integration File signal 2: autoint2.e
 Quant Time: Jan 09 03:37:03 2019
 Quant Method : Z:\pestpcbsrv\HPCHEM1\ECD_Q\Method\PQ010819.M
 Quant Title : GC EXTRACTABLES
 QLast Update : Wed Jan 09 01:06:47 2019
 Response via : Initial Calibration
 Integrator: ChemStation

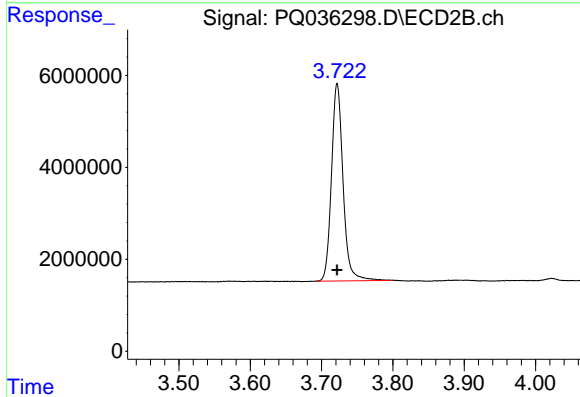
Volume Inj. : 2 µl
 Signal #1 Phase : ZB-MR1 Signal #2 Phase: ZB-MR2
 Signal #1 Info : 30Mx0.32mmx 0.50µm Signal #2 Info : 30M x 0.32mm x 0.25µm



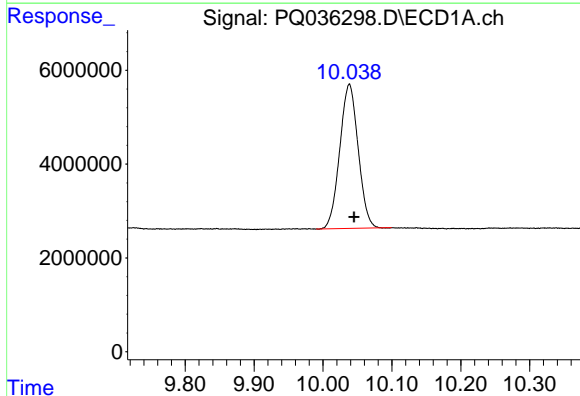


#1 Tetrachloro-m-xylene
 R.T.: 4.387 min
 Delta R.T.: -0.003 min
 Response: 82451031
 Conc: 18.04 ng/ml

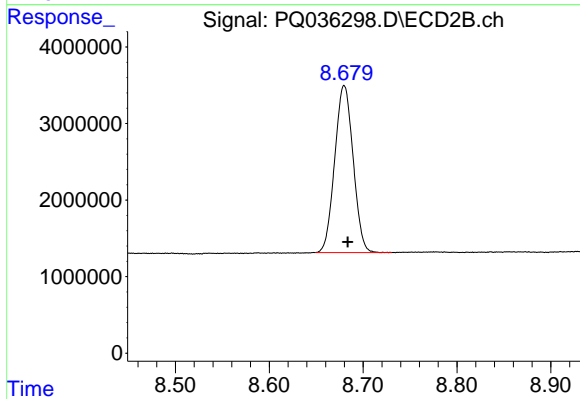
Instrument :
 ECD_Q
 ClientSampleId :
 TRANSFORMER-PIERS



#1 Tetrachloro-m-xylene
 R.T.: 3.722 min
 Delta R.T.: 0.000 min
 Response: 48383693
 Conc: 19.99 ng/ml



#2 Decachlorobiphenyl
 R.T.: 10.038 min
 Delta R.T.: -0.007 min
 Response: 57070239
 Conc: 15.69 ng/ml



#2 Decachlorobiphenyl
 R.T.: 8.680 min
 Delta R.T.: -0.004 min
 Response: 29752156
 Conc: 15.48 ng/ml