

Data Path : Z:\pestpcbsrv\HPCHEM1\ECD_Q\Data\PQ011119\
 Data File : PQ036380.D
 Signal(s) : Signal #1: ECD1A.ch Signal #2: ECD2B.ch
 Acq On : 11 Jan 2019 15:24
 Operator : SM\SJ
 Sample : I.BLK
 Misc :
 ALS Vial : 2 Sample Multiplier: 1

Instrument :
 ECD_Q
 ClientSampled :
 I.BLK

Manual Integrations
 APPROVED

Sohil
 1/14/2019 3:44:51 PM

Integration File signal 1: autoint1.e
 Integration File signal 2: autoint2.e
 Quant Time: Jan 11 22:50:40 2019
 Quant Method : Z:\pestpcbsrv\HPCHEM1\ECD_Q\Method\PQ010819.M
 Quant Title : GC EXTRACTABLES
 QLast Update : Wed Jan 09 07:07:45 2019
 Response via : Initial Calibration
 Integrator: ChemStation

Volume Inj. : 2 µl
 Signal #1 Phase : ZB-MR1 Signal #2 Phase: ZB-MR2
 Signal #1 Info : 30Mx0.32mmx 0.50µ Signal #2 Info : 30M x 0.32mm x 0.25µm

Compound	RT#1	RT#2	Resp#1	Resp#2	ng/ml	ng/ml
----------	------	------	--------	--------	-------	-------

 System Monitoring Compounds

1) SA Tetrachlo...	4.380	3.718	94200804	52892739	20.606m	21.852
2) SA Decachlor...	10.022	8.676	59267466	31231249	16.294	16.246m

Target Compounds

(f)=RT Delta > 1/2 Window (#)=Amounts differ by > 25% (m)=manual int.

Data Path : Z:\pestpcbsrv\HPCHEM1\ECD_Q\Data\PQ011119\
 Data File : PQ036380.D
 Signal(s) : Signal #1: ECD1A.ch Signal #2: ECD2B.ch
 Acq On : 11 Jan 2019 15:24
 Operator : SM\SJ
 Sample : I.BLK
 Misc :
 ALS Vial : 2 Sample Multiplier: 1

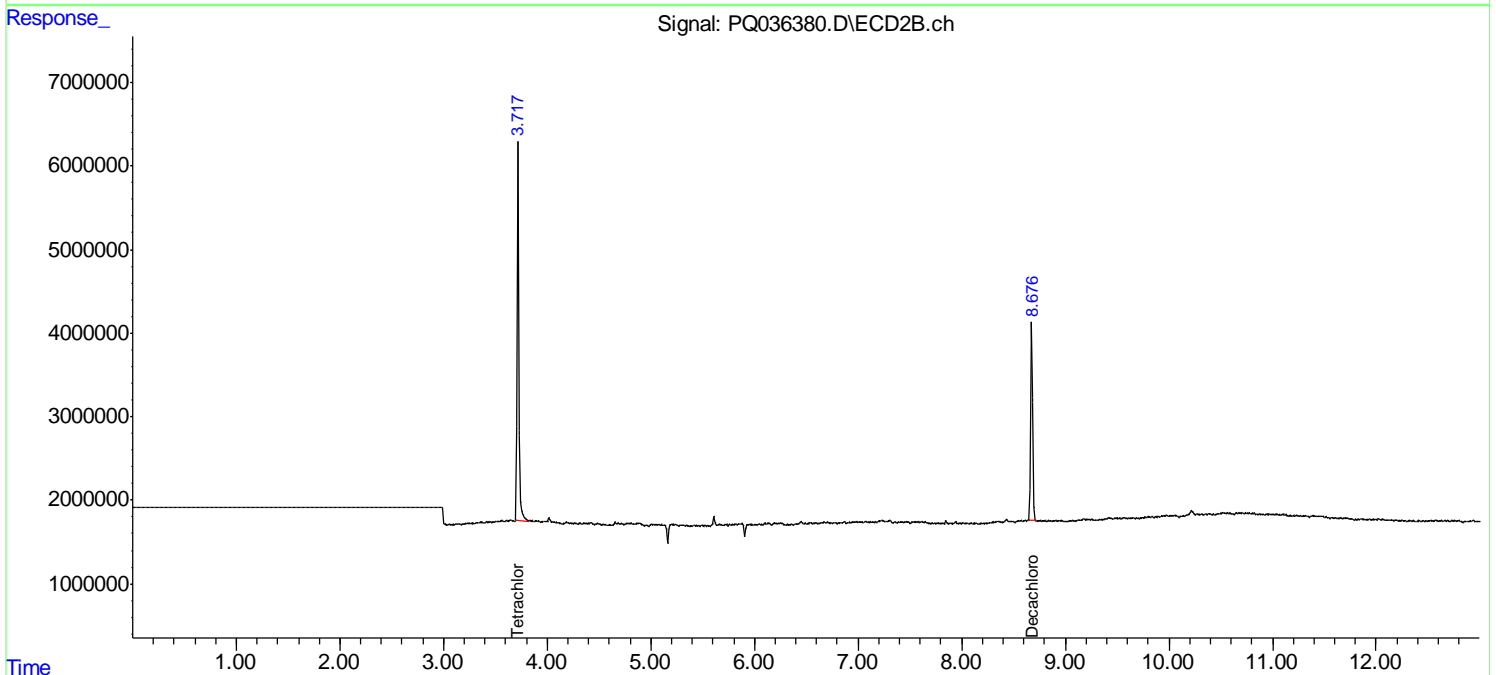
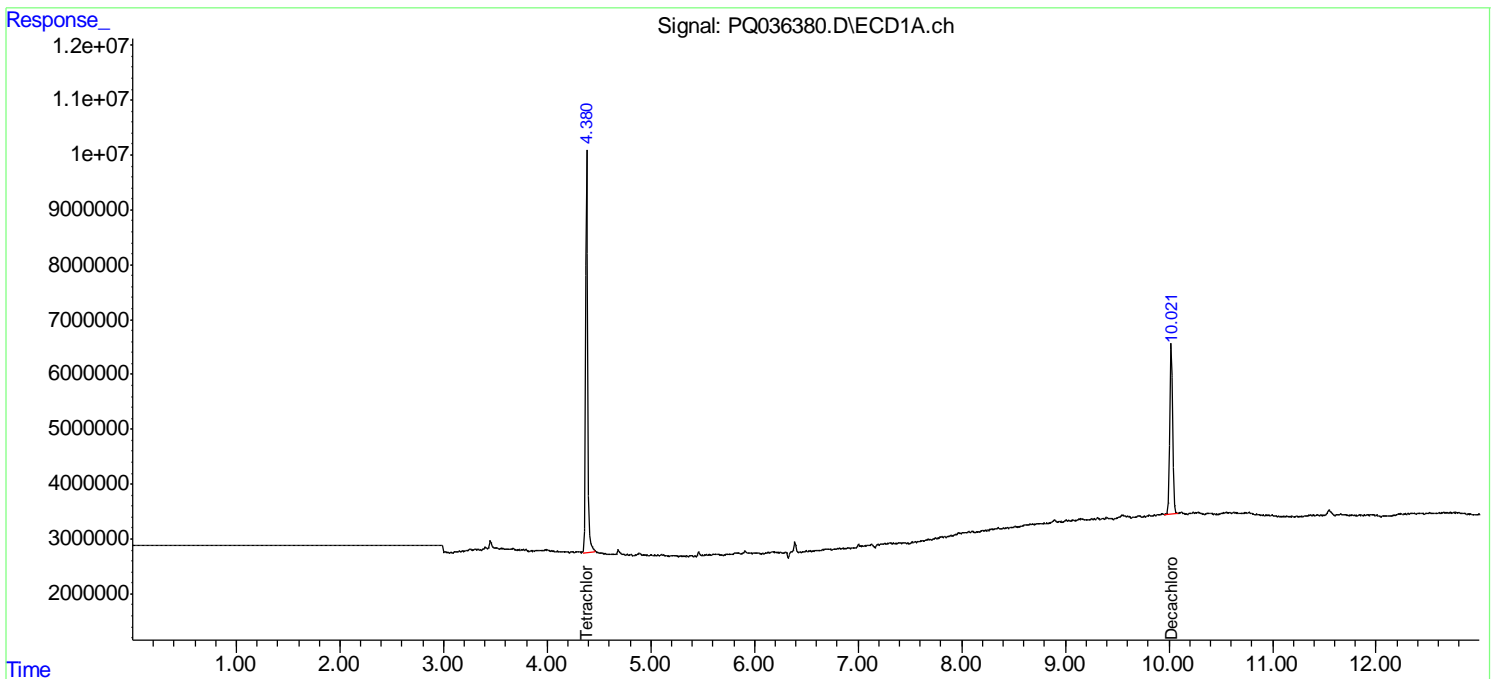
Instrument :
 ECD_Q
 ClientSampled :
 I.BLK

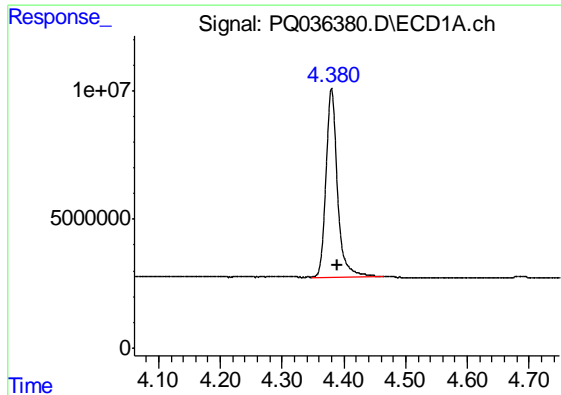
Manual Integrations
 APPROVED

Sohil
 1/14/2019 3:44:51 PM

Integration File signal 1: autoint1.e
 Integration File signal 2: autoint2.e
 Quant Time: Jan 11 22:50:40 2019
 Quant Method : Z:\pestpcbsrv\HPCHEM1\ECD_Q\Method\PQ010819.M
 Quant Title : GC EXTRACTABLES
 QLast Update : Wed Jan 09 07:07:45 2019
 Response via : Initial Calibration
 Integrator: ChemStation

Volume Inj. : 2 µl
 Signal #1 Phase : ZB-MR1 Signal #2 Phase: ZB-MR2
 Signal #1 Info : 30Mx0.32mmx 0.50µ Signal #2 Info : 30M x 0.32mm x 0.25µm





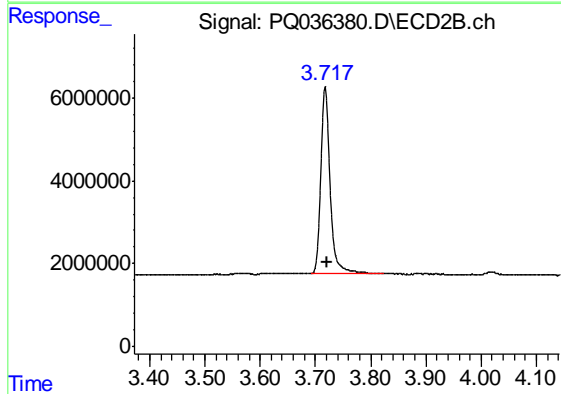
#1 Tetrachloro-m-xylene

R.T.: 4.380 min
 Delta R.T.: -0.009 min
 Response: 94200804
 Conc: 20.61 ng/ml m

Instrument :
 ECD_Q
 ClientSampled :
 I.BLK

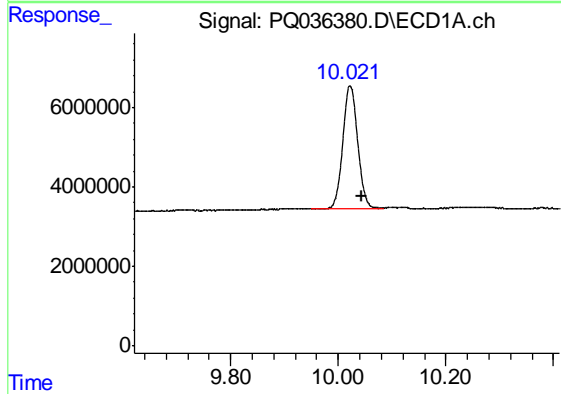
Manual Integrations
 APPROVED

Sohil
 1/14/2019 3:44:51 PM



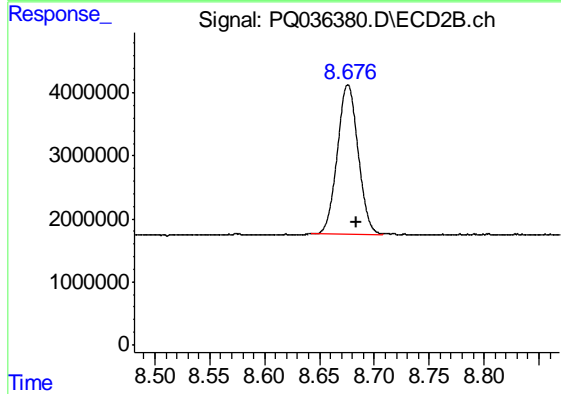
#1 Tetrachloro-m-xylene

R.T.: 3.718 min
 Delta R.T.: -0.003 min
 Response: 52892739
 Conc: 21.85 ng/ml



#2 Decachlorobiphenyl

R.T.: 10.022 min
 Delta R.T.: -0.022 min
 Response: 59267466
 Conc: 16.29 ng/ml



#2 Decachlorobiphenyl

R.T.: 8.676 min
 Delta R.T.: -0.009 min
 Response: 31231249
 Conc: 16.25 ng/ml m