

Data Path : Z:\pestpcbsrv\HPCHEM1\ECD\_Q\Data\PQ011419\  
 Data File : PQ036397.D  
 Signal(s) : Signal #1: ECD1A.ch Signal #2: ECD2B.ch  
 Acq On : 14 Jan 2019 14:42  
 Operator : SM\SJ  
 Sample : PB116348BS  
 Misc :  
 ALS Vial : 7 Sample Multiplier: 1

**Instrument :**  
 ECD\_Q  
**ClientSampled :**  
 PB116348BS

**Manual Integrations**  
**APPROVED**  
 Sohil  
 1/15/2019 11:20:15 AM

Integration File signal 1: autoint1.e  
 Integration File signal 2: autoint2.e  
 Quant Time: Jan 14 22:15:40 2019  
 Quant Method : Z:\pestpcbsrv\HPCHEM1\ECD\_Q\Method\PQ010819.M  
 Quant Title : GC EXTRACTABLES  
 QLast Update : Wed Jan 09 07:07:45 2019  
 Response via : Initial Calibration  
 Integrator: ChemStation

Volume Inj. : 2 µl  
 Signal #1 Phase : ZB-MR1 Signal #2 Phase: ZB-MR2  
 Signal #1 Info : 30Mx0.32mmx 0.50µ Signal #2 Info : 30M x 0.32mm x 0.25µm

Compound	RT#1	RT#2	Resp#1	Resp#2	ng/ml	ng/ml
-----						
System Monitoring Compounds						
1) SA Tetrachlo...	4.384	3.721	110.6E6	59468296	24.187	24.569
2) SA Decachlor...	10.031	8.679	65936089	35727875	18.127	18.585m
Target Compounds						
3) L1 AR-1016-1	5.545	4.795	33007724	19004071	235.901	244.856
4) L1 AR-1016-2	5.566	4.812	49486778	27253834	231.823	239.305
5) L1 AR-1016-3	5.629	4.988	29031763	13892153	234.013	240.128
6) L1 AR-1016-4	5.728	5.027	22993137	11261460	227.067	238.901
7) L1 AR-1016-5	6.019	5.240	21477880	13482598	215.085	221.625
31) L7 AR-1260-1	7.135	6.260	37104864	24037733	194.889	201.870
32) L7 AR-1260-2	7.391	6.447	42892507	28057496	186.903	195.431
33) L7 AR-1260-3	7.749	6.599	25570823	25451297	181.598	192.757
34) L7 AR-1260-4	7.977	7.067	30071698	17397100	174.407	193.537
35) L7 AR-1260-5	8.293	7.310	57588083	39974281	171.569	180.934
-----						

(f)=RT Delta > 1/2 Window (#)=Amounts differ by > 25% (m)=manual int.

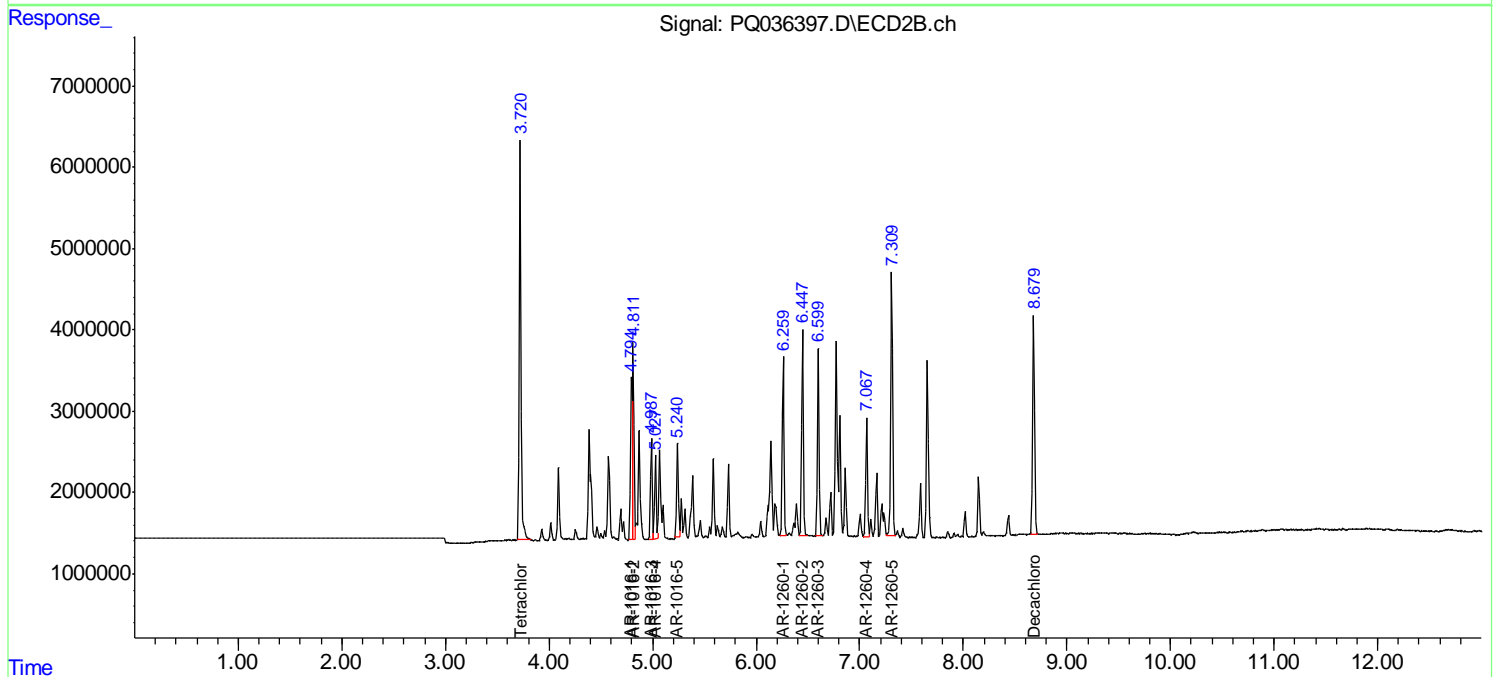
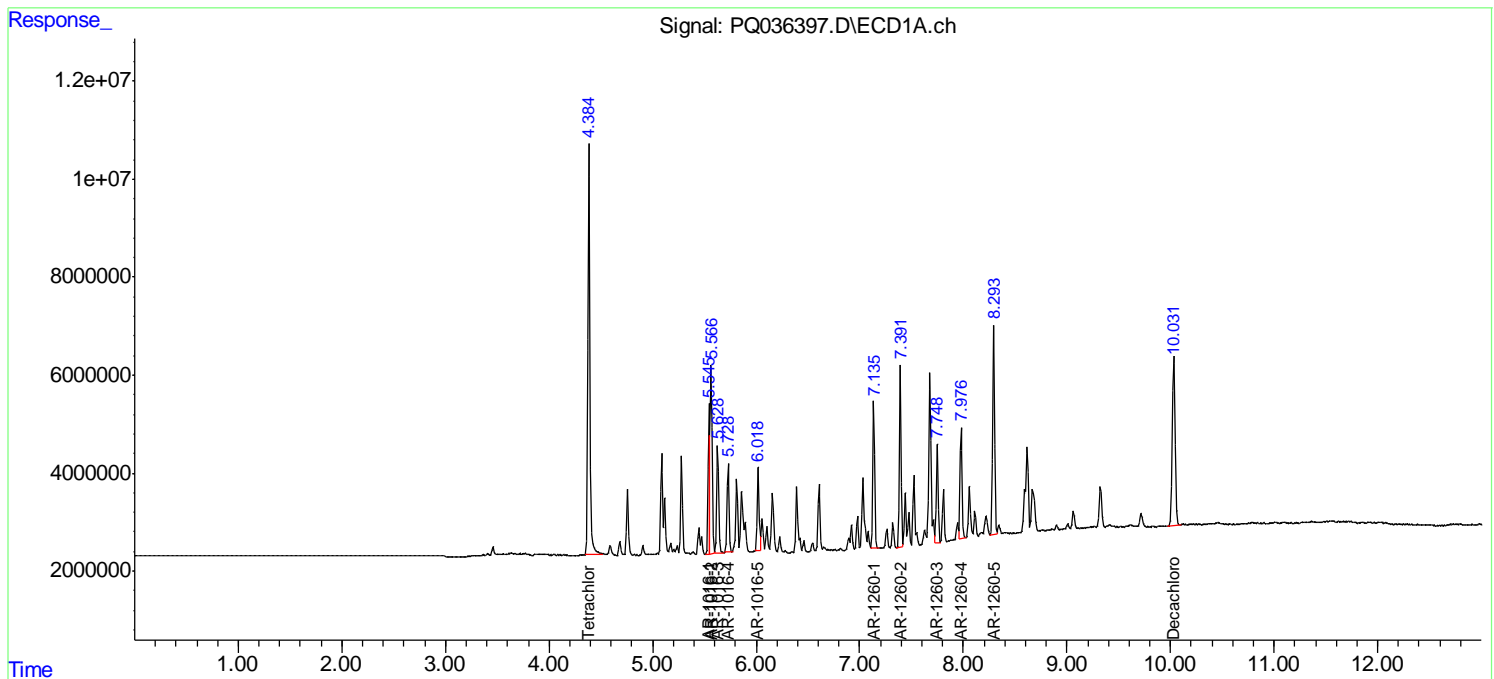
Data Path : Z:\pestpcbsrv\HPCHEM1\ECD\_Q\Data\PQ011419\  
 Data File : PQ036397.D  
 Signal(s) : Signal #1: ECD1A.ch Signal #2: ECD2B.ch  
 Acq On : 14 Jan 2019 14:42  
 Operator : SM\SJ  
 Sample : PB116348BS  
 Misc :  
 ALS Vial : 7 Sample Multiplier: 1

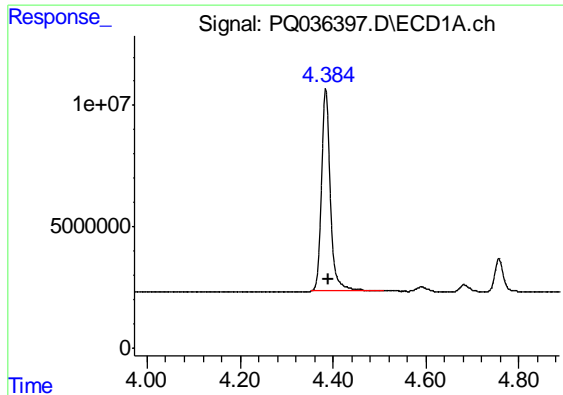
**Instrument :**  
 ECD\_Q  
**Client Sampled :**  
 PB116348BS

**Manual Integrations**  
**APPROVED**  
 Sohil  
 1/15/2019 11:20:15 AM

Integration File signal 1: autoint1.e  
 Integration File signal 2: autoint2.e  
 Quant Time: Jan 14 22:15:40 2019  
 Quant Method : Z:\pestpcbsrv\HPCHEM1\ECD\_Q\Method\PQ010819.M  
 Quant Title : GC EXTRACTABLES  
 QLast Update : Wed Jan 09 07:07:45 2019  
 Response via : Initial Calibration  
 Integrator: ChemStation

Volume Inj. : 2 µl  
 Signal #1 Phase : ZB-MR1 Signal #2 Phase: ZB-MR2  
 Signal #1 Info : 30Mx0.32mmx 0.50µ Signal #2 Info : 30M x 0.32mm x 0.25µm

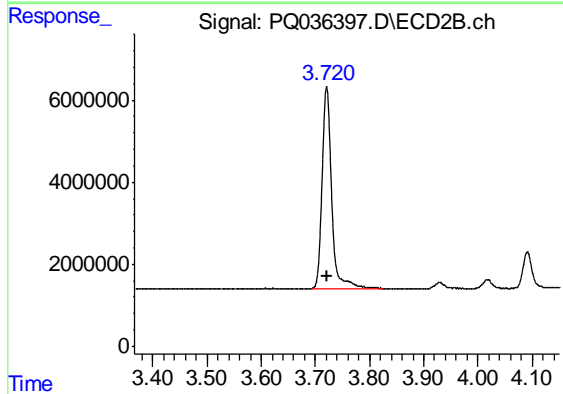




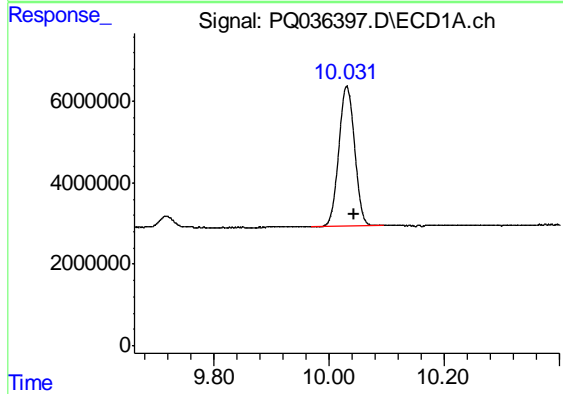
#1 Tetrachloro-m-xylene  
 R.T.: 4.384 min  
 Delta R.T.: -0.005 min  
 Response: 110570170  
 Conc: 24.19 ng/ml

**Instrument :**  
 ECD\_Q  
**ClientSampled :**  
 PB116348BS

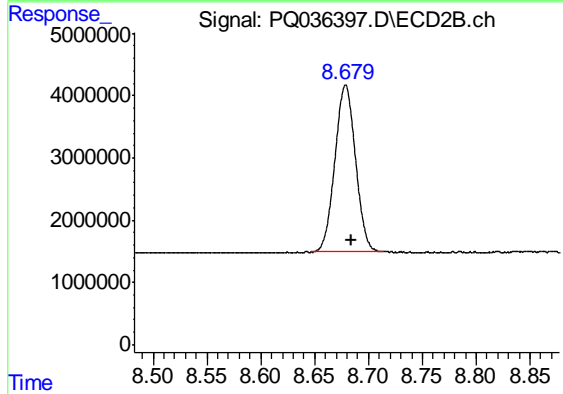
**Manual Integrations**  
**APPROVED**  
 Sohil  
 1/15/2019 11:20:15 AM



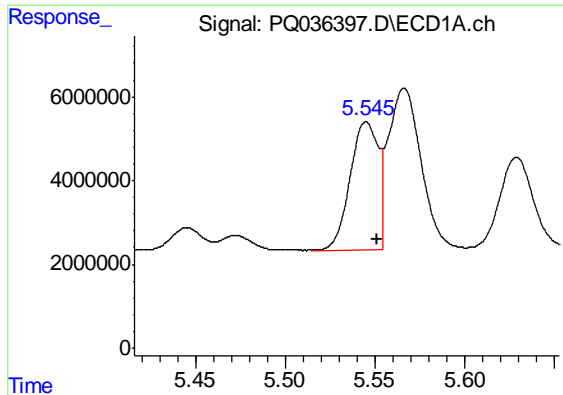
#1 Tetrachloro-m-xylene  
 R.T.: 3.721 min  
 Delta R.T.: 0.000 min  
 Response: 59468296  
 Conc: 24.57 ng/ml



#2 Decachlorobiphenyl  
 R.T.: 10.031 min  
 Delta R.T.: -0.013 min  
 Response: 65936089  
 Conc: 18.13 ng/ml



#2 Decachlorobiphenyl  
 R.T.: 8.679 min  
 Delta R.T.: -0.006 min  
 Response: 35727875  
 Conc: 18.58 ng/ml m

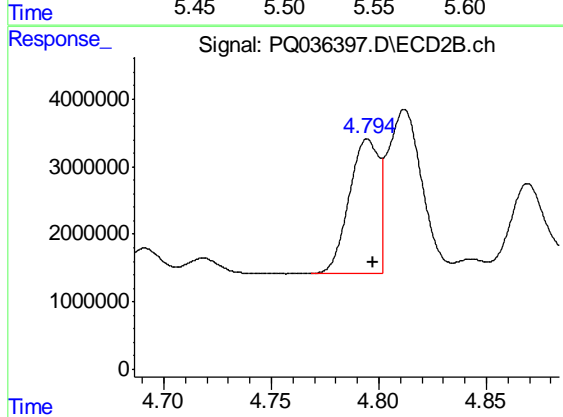


#3 AR-1016-1

R.T.: 5.545 min  
 Delta R.T.: -0.006 min  
 Response: 33007724  
 Conc: 235.90 ng/ml

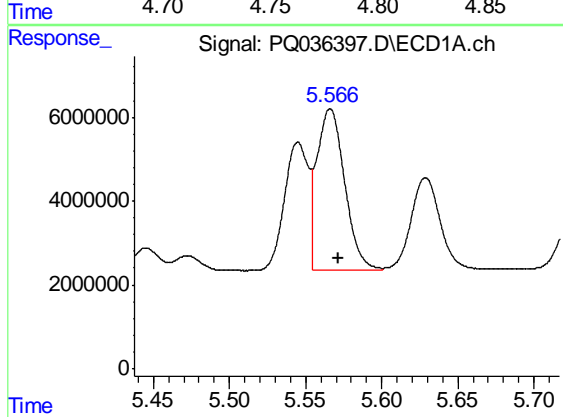
**Instrument :**  
 ECD\_Q  
**ClientSampled :**  
 PB116348BS

**Manual Integrations**  
**APPROVED**  
 Sohil  
 1/15/2019 11:20:15 AM



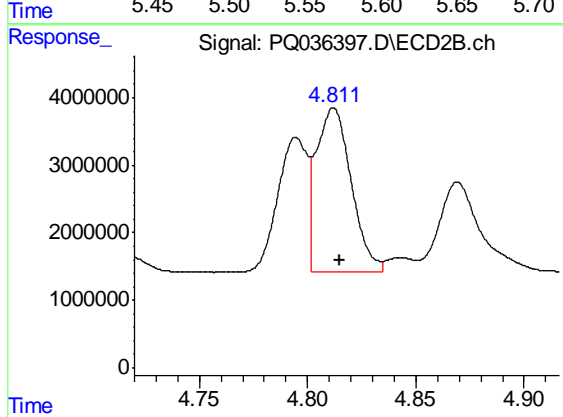
#3 AR-1016-1

R.T.: 4.795 min  
 Delta R.T.: -0.002 min  
 Response: 19004071  
 Conc: 244.86 ng/ml



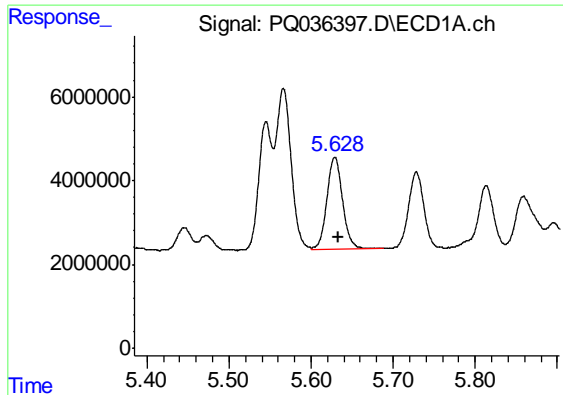
#4 AR-1016-2

R.T.: 5.566 min  
 Delta R.T.: -0.006 min  
 Response: 49486778  
 Conc: 231.82 ng/ml



#4 AR-1016-2

R.T.: 4.812 min  
 Delta R.T.: -0.003 min  
 Response: 27253834  
 Conc: 239.30 ng/ml



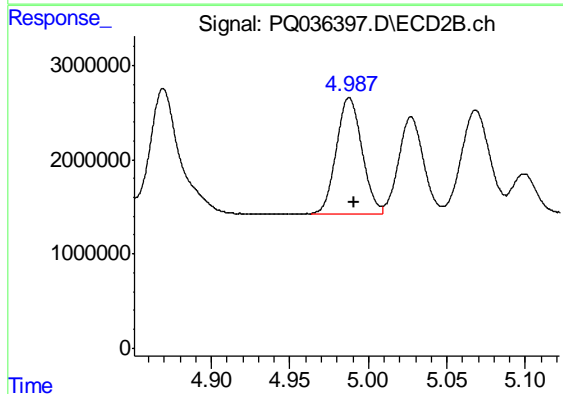
#5 AR-1016-3

R.T.: 5.629 min  
 Delta R.T.: -0.005 min  
 Response: 29031763  
 Conc: 234.01 ng/ml

Instrument :  
 ECD\_Q  
 ClientSampled :  
 PB116348BS

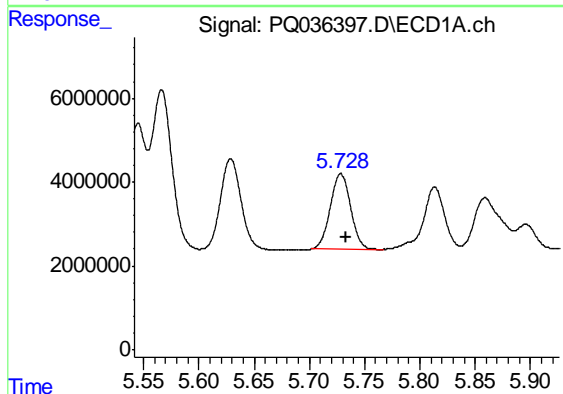
Manual Integrations  
 APPROVED

Sohil  
 1/15/2019 11:20:15 AM



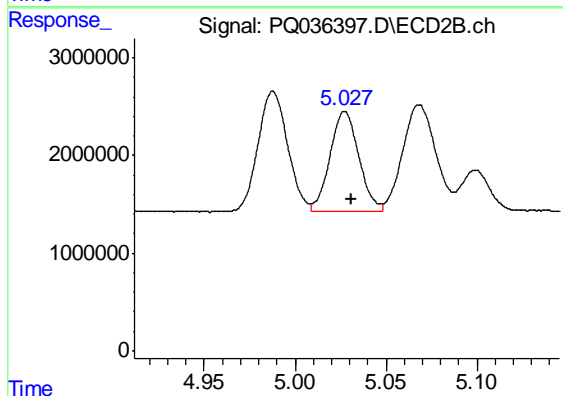
#5 AR-1016-3

R.T.: 4.988 min  
 Delta R.T.: -0.003 min  
 Response: 13892153  
 Conc: 240.13 ng/ml



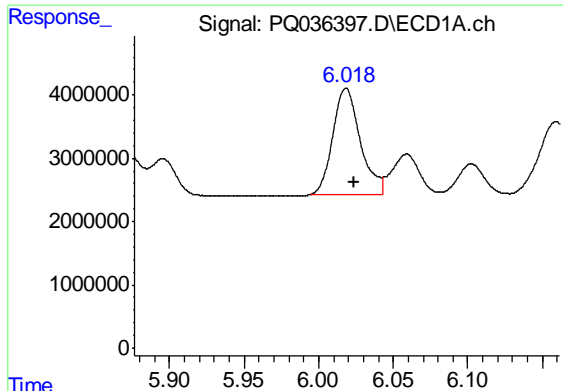
#6 AR-1016-4

R.T.: 5.728 min  
 Delta R.T.: -0.005 min  
 Response: 22993137  
 Conc: 227.07 ng/ml



#6 AR-1016-4

R.T.: 5.027 min  
 Delta R.T.: -0.003 min  
 Response: 11261460  
 Conc: 238.90 ng/ml

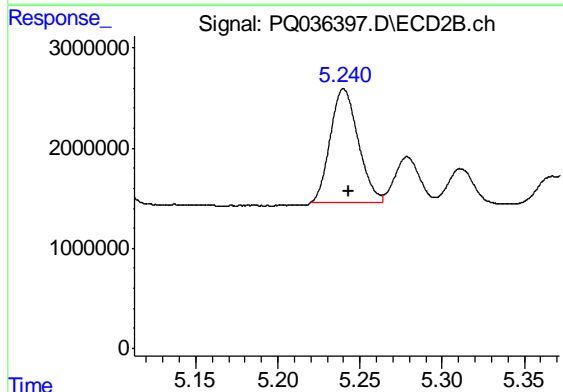


#7 AR-1016-5

R.T.: 6.019 min  
 Delta R.T.: -0.006 min  
 Response: 21477880  
 Conc: 215.09 ng/ml

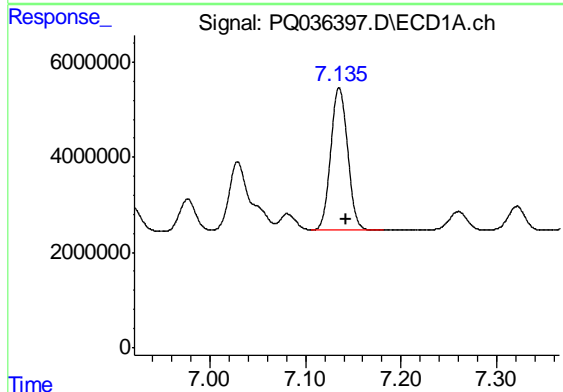
**Instrument :**  
 ECD\_Q  
**ClientSampled :**  
 PB116348BS

**Manual Integrations**  
**APPROVED**  
 Sohil  
 1/15/2019 11:20:15 AM



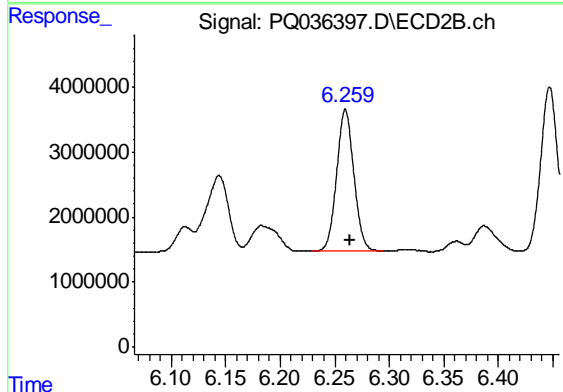
#7 AR-1016-5

R.T.: 5.240 min  
 Delta R.T.: -0.003 min  
 Response: 13482598  
 Conc: 221.63 ng/ml



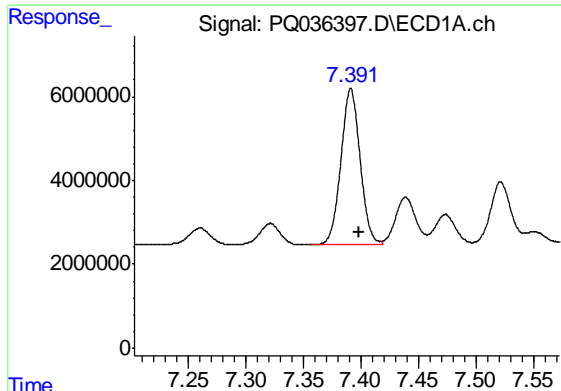
#31 AR-1260-1

R.T.: 7.135 min  
 Delta R.T.: -0.008 min  
 Response: 37104864  
 Conc: 194.89 ng/ml



#31 AR-1260-1

R.T.: 6.260 min  
 Delta R.T.: -0.004 min  
 Response: 24037733  
 Conc: 201.87 ng/ml



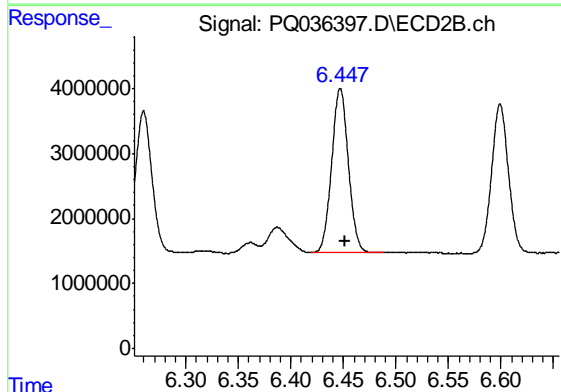
#32 AR-1260-2

R.T.: 7.391 min  
 Delta R.T.: -0.008 min  
 Response: 42892507  
 Conc: 186.90 ng/ml

Instrument :  
 ECD\_Q  
 ClientSampled :  
 PB116348BS

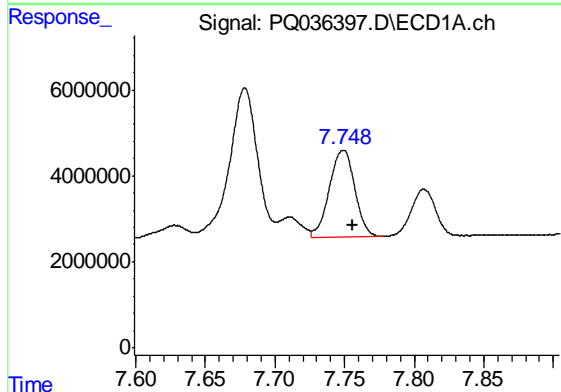
Manual Integrations  
 APPROVED

Sohil  
 1/15/2019 11:20:15 AM



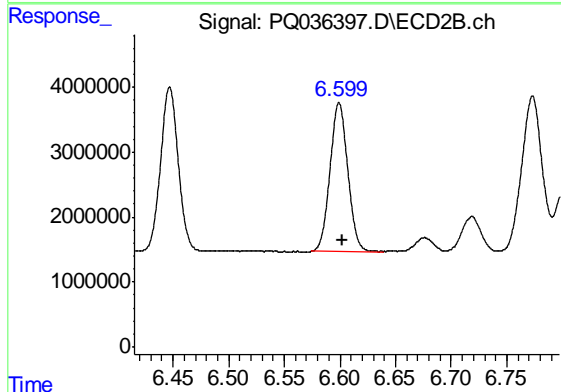
#32 AR-1260-2

R.T.: 6.447 min  
 Delta R.T.: -0.004 min  
 Response: 28057496  
 Conc: 195.43 ng/ml



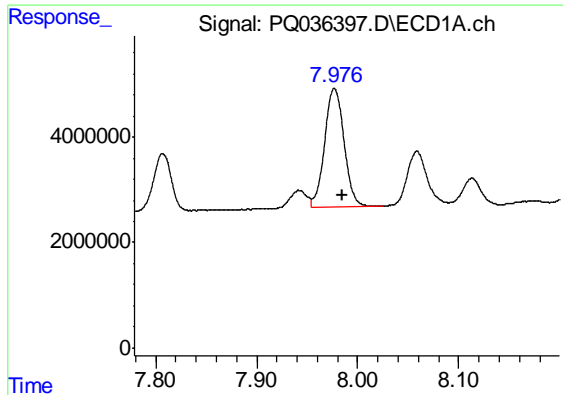
#33 AR-1260-3

R.T.: 7.749 min  
 Delta R.T.: -0.006 min  
 Response: 25570823  
 Conc: 181.60 ng/ml



#33 AR-1260-3

R.T.: 6.599 min  
 Delta R.T.: -0.003 min  
 Response: 25451297  
 Conc: 192.76 ng/ml



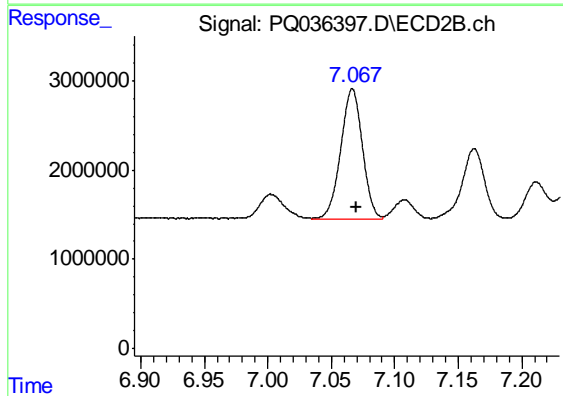
#34 AR-1260-4

R.T.: 7.977 min  
 Delta R.T.: -0.008 min  
 Response: 30071698  
 Conc: 174.41 ng/ml

Instrument :  
 ECD\_Q  
 ClientSampleId :  
 PB116348BS

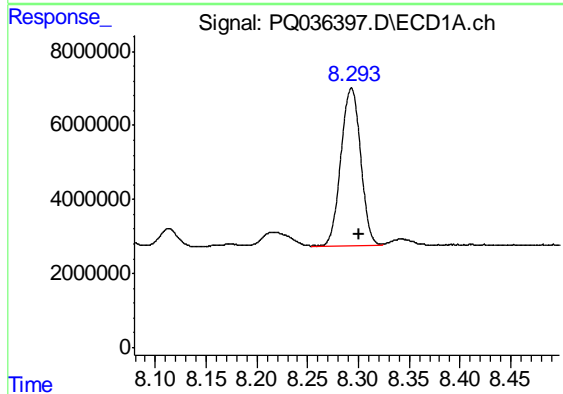
Manual Integrations  
 APPROVED

Sohil  
 1/15/2019 11:20:15 AM



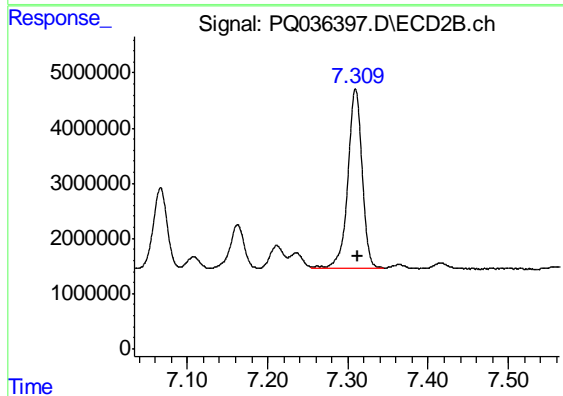
#34 AR-1260-4

R.T.: 7.067 min  
 Delta R.T.: -0.003 min  
 Response: 17397100  
 Conc: 193.54 ng/ml



#35 AR-1260-5

R.T.: 8.293 min  
 Delta R.T.: -0.007 min  
 Response: 57588083  
 Conc: 171.57 ng/ml



#35 AR-1260-5

R.T.: 7.310 min  
 Delta R.T.: -0.004 min  
 Response: 39974281  
 Conc: 180.93 ng/ml