

Data Path : Z:\pestpcbsrv\HPCHEM1\ECD_Q\Data\PQ012219\
 Data File : PQ036610.D
 Signal(s) : Signal #1: ECD1A.ch Signal #2: ECD2B.ch
 Acq On : 22 Jan 2019 15:11
 Operator : SM\SJ
 Sample : I.BLK
 Misc :
 ALS Vial : 2 Sample Multiplier: 1

Instrument :
 ECD_Q
 ClientSampleId :
 I.BLK

Integration File signal 1: autoint1.e
 Integration File signal 2: autoint2.e
 Quant Time: Jan 22 23:42:18 2019
 Quant Method : Z:\pestpcbsrv\HPCHEM1\ECD_Q\Method\PQ010819.M
 Quant Title : GC EXTRACTABLES
 QLast Update : Wed Jan 09 07:07:45 2019
 Response via : Initial Calibration
 Integrator: ChemStation

Volume Inj. : 2 µl
 Signal #1 Phase : ZB-MR1 Signal #2 Phase: ZB-MR2
 Signal #1 Info : 30Mx0.32mmx 0.50µ Signal #2 Info : 30M x 0.32mm x 0.25µm

Compound	RT#1	RT#2	Resp#1	Resp#2	ng/ml	ng/ml

System Monitoring Compounds						
1) SA Tetrachlo...	0.000	3.711	0	48560784	N.D.	20.063 #
2) SA Decachlor...	9.980	8.657	61851930	32352377	17.004	16.829

Target Compounds

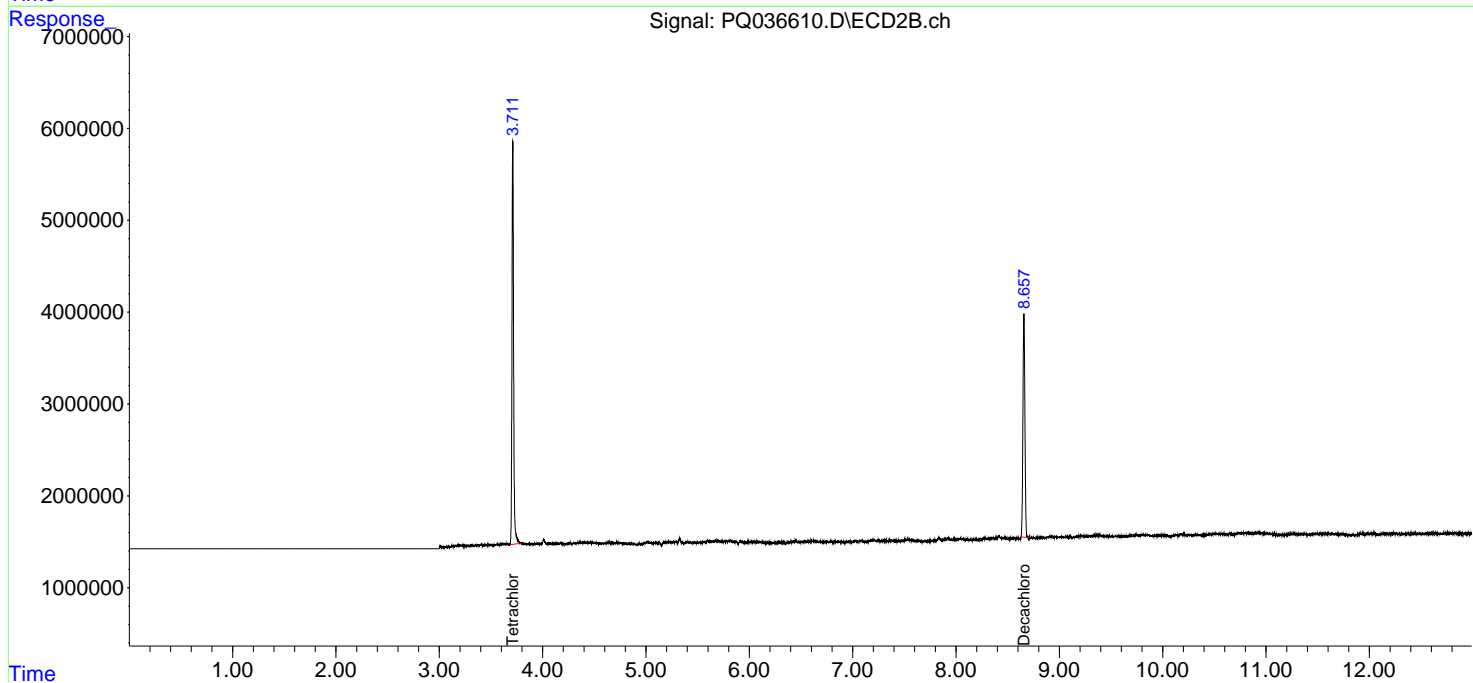
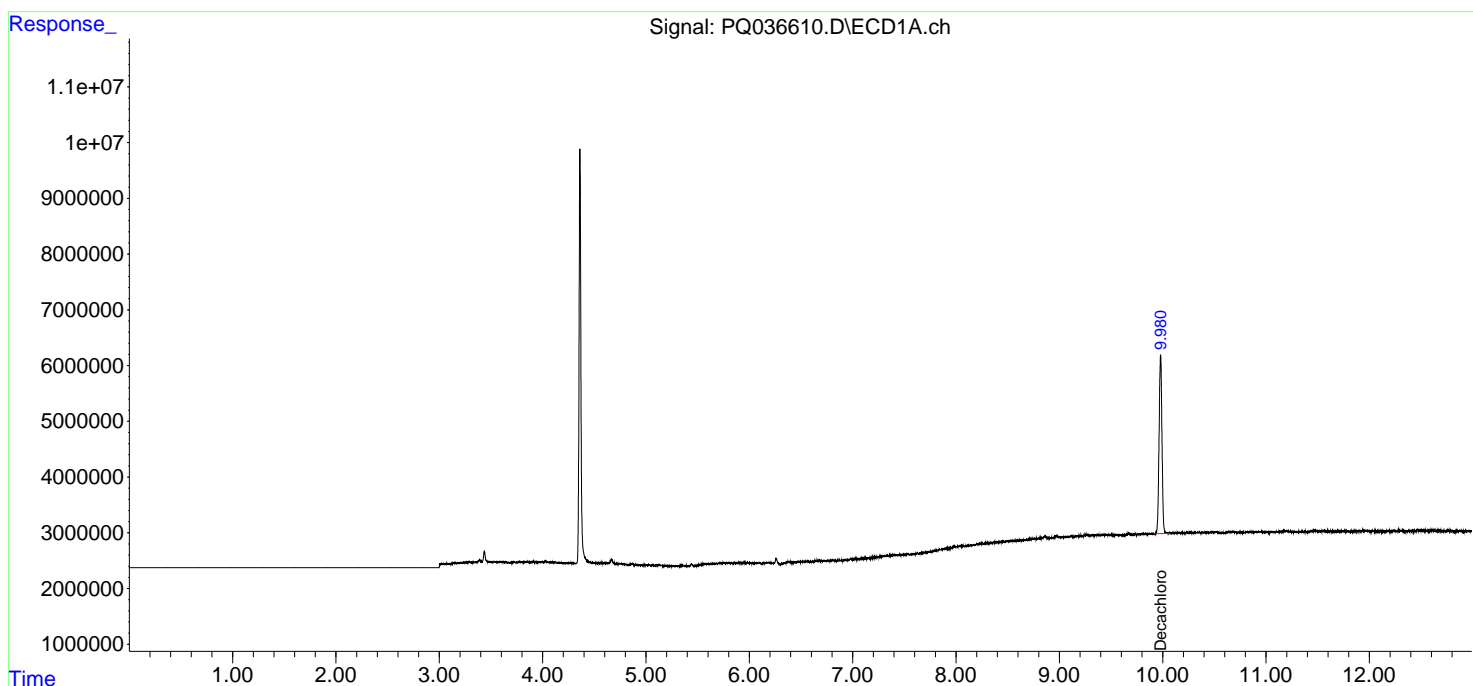
(f)=RT Delta > 1/2 Window (#)=Amounts differ by > 25% (m)=manual int.

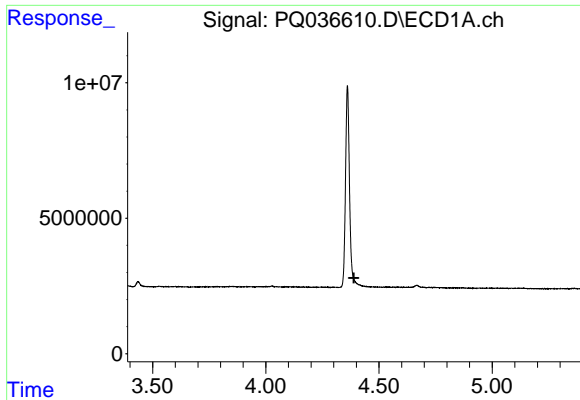
Data Path : Z:\pestpcbsrv\HPCHEM1\ECD_Q\Data\PQ012219\
Data File : PQ036610.D
Signal(s) : Signal #1: ECD1A.ch Signal #2: ECD2B.ch
Acq On : 22 Jan 2019 15:11
Operator : SM\SJ
Sample : I.BLK
Misc :
ALS Vial : 2 Sample Multiplier: 1

Instrument :
ECD_Q
ClientSampleId :
I.BLK

Integration File signal 1: autoint1.e
Integration File signal 2: autoint2.e
Quant Time: Jan 22 23:42:18 2019
Quant Method : Z:\pestpcbsrv\HPCHEM1\ECD_Q\Method\PQ010819.M
Quant Title : GC EXTRACTABLES
QLast Update : Wed Jan 09 07:07:45 2019
Response via : Initial Calibration
Integrator: ChemStation

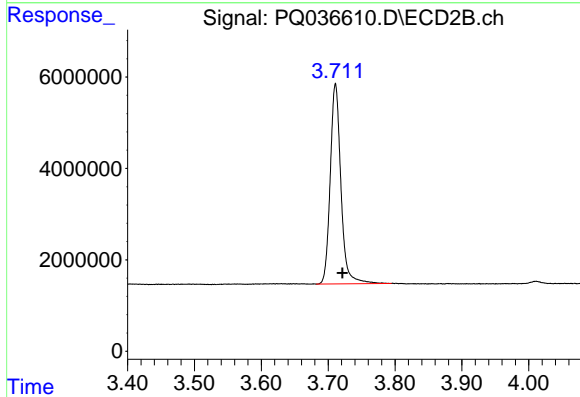
Volume Inj. : 2 µl
Signal #1 Phase : ZB-MR1 Signal #2 Phase: ZB-MR2
Signal #1 Info : 30Mx0.32mmx 0.50µm Signal #2 Info : 30M x 0.32mm x 0.25µm



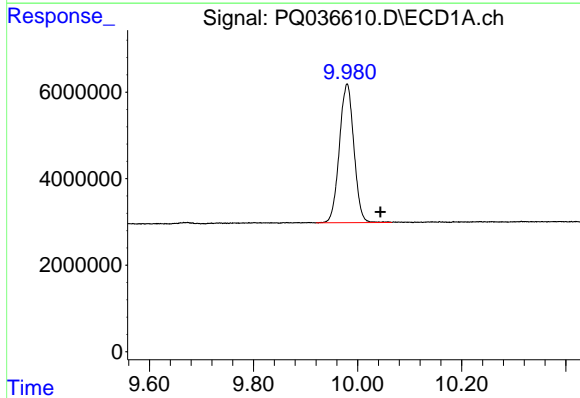


#1 Tetrachloro-m-xylene
 R.T.: 0.000 min
 Exp R.T.: 4.389 min
 Response: 0
 Conc: N.D.

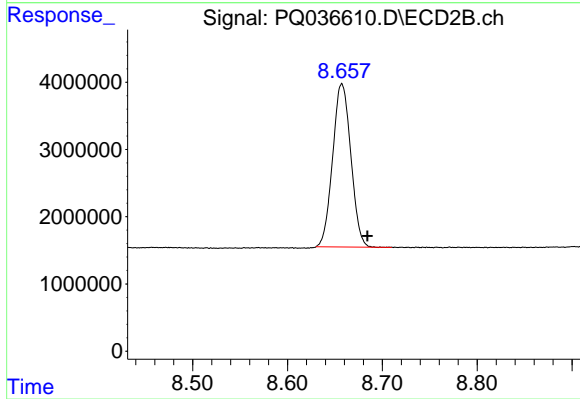
Instrument :
 ECD_Q
 ClientSampled :
 I.BLK



#1 Tetrachloro-m-xylene
 R.T.: 3.711 min
 Delta R.T.: -0.010 min
 Response: 48560784
 Conc: 20.06 ng/ml



#2 Decachlorobiphenyl
 R.T.: 9.980 min
 Delta R.T.: -0.064 min
 Response: 61851930
 Conc: 17.00 ng/ml



#2 Decachlorobiphenyl
 R.T.: 8.657 min
 Delta R.T.: -0.027 min
 Response: 32352377
 Conc: 16.83 ng/ml