

Data Path : Z:\pestpcbsrv\HPCHEM1\ECD_Q\Data\PQ012219\
 Data File : PQ036604.D
 Signal(s) : Signal #1: ECD1A.ch Signal #2: ECD2B.ch
 Acq On : 22 Jan 2019 13:17
 Operator : SM\SJ
 Sample : K1173-01RE
 Misc :
 ALS Vial : 103 Sample Multiplier: 1

Instrument :
 ECD_Q
 ClientSampleId :
 RBR-200052RE

Manual Integrations
 APPROVED

Sohil
 1/23/2019 1:10:52 PM

Integration File signal 1: autoint1.e
 Integration File signal 2: autoint2.e
 Quant Time: Jan 22 13:39:27 2019
 Quant Method : Z:\pestpcbsrv\HPCHEM1\ECD_Q\Method\PQ010819.M
 Quant Title : GC EXTRACTABLES
 QLast Update : Wed Jan 09 07:07:45 2019
 Response via : Initial Calibration
 Integrator: ChemStation

Volume Inj. : 2 µl
 Signal #1 Phase : ZB-MR1 Signal #2 Phase: ZB-MR2
 Signal #1 Info : 30Mx0.32mmx 0.50µ Signal #2 Info : 30M x 0.32mm x 0.25µm

Compound	RT#1	RT#2	Resp#1	Resp#2	ng/ml	ng/ml
----------	------	------	--------	--------	-------	-------

 System Monitoring Compounds

1) SA Tetrachlo...	4.366	3.710	75177506	40484366	16.445m	16.726
2) SA Decachlor...	9.986	8.660	25870957	14174803	7.112	7.373

Target Compounds

(f)=RT Delta > 1/2 Window (#)=Amounts differ by > 25% (m)=manual int.

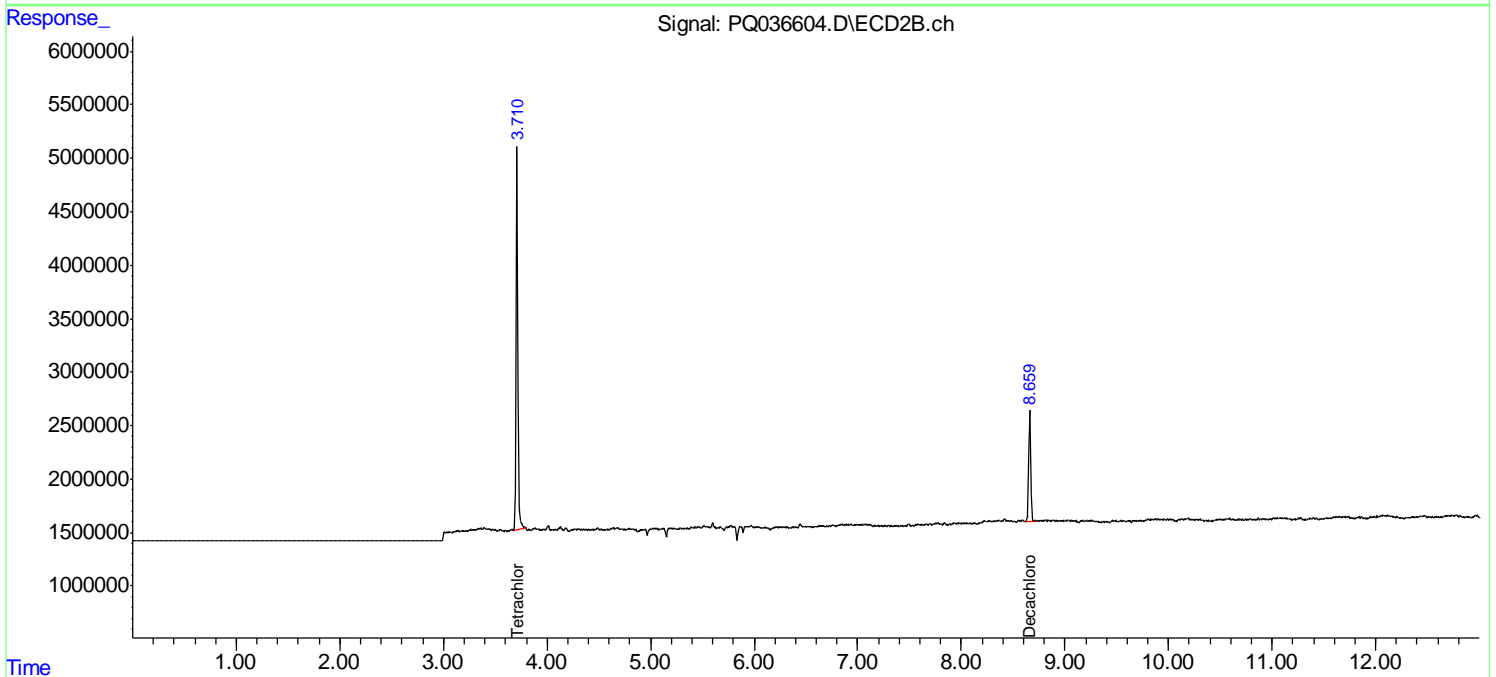
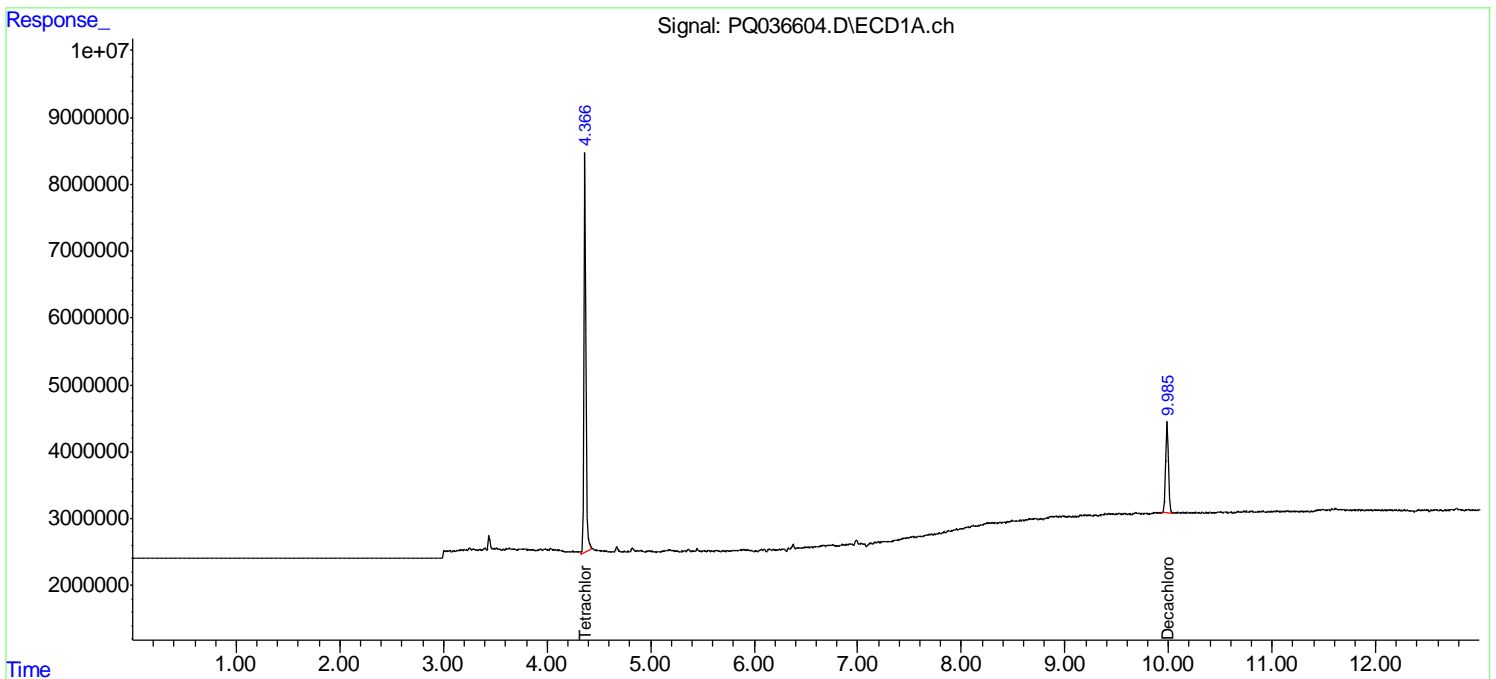
Data Path : Z:\pestpcbsrv\HPCHEM1\ECD_Q\Data\PQ012219\
 Data File : PQ036604.D
 Signal(s) : Signal #1: ECD1A.ch Signal #2: ECD2B.ch
 Acq On : 22 Jan 2019 13:17
 Operator : SM\SJ
 Sample : K1173-01RE
 Misc :
 ALS Vial : 103 Sample Multiplier: 1

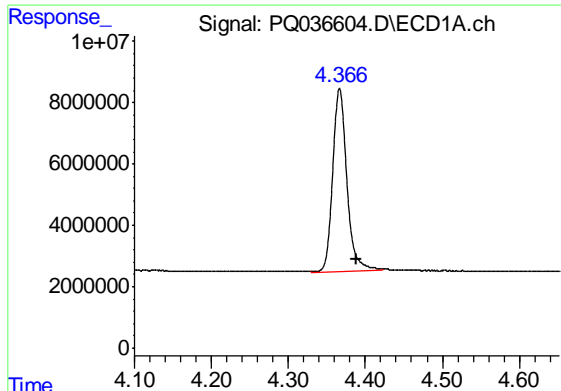
Instrument :
 ECD_Q
Client Sampled :
 RBR-200052RE

Manual Integrations
APPROVED
 Sohil
 1/23/2019 1:10:52 PM

Integration File signal 1: autoint1.e
 Integration File signal 2: autoint2.e
 Quant Time: Jan 22 13:39:27 2019
 Quant Method : Z:\pestpcbsrv\HPCHEM1\ECD_Q\Method\PQ010819.M
 Quant Title : GC EXTRACTABLES
 QLast Update : Wed Jan 09 07:07:45 2019
 Response via : Initial Calibration
 Integrator: ChemStation

Volume Inj. : 2 µl
 Signal #1 Phase : ZB-MR1 Signal #2 Phase: ZB-MR2
 Signal #1 Info : 30Mx0.32mmx 0.50µ Signal #2 Info : 30M x 0.32mm x 0.25µm

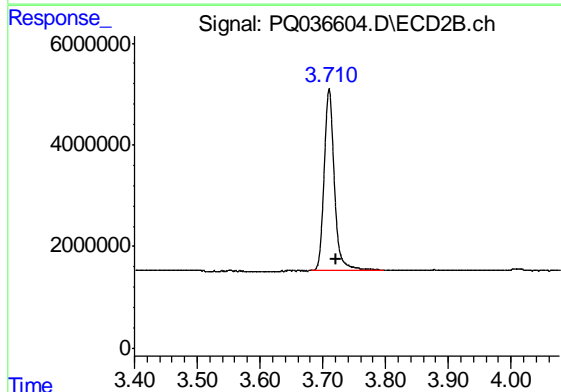




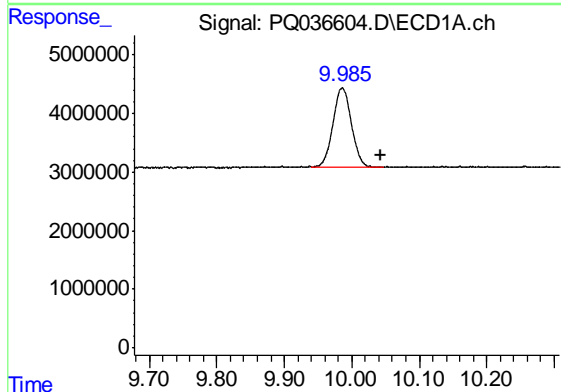
#1 Tetrachloro-m-xylene
 R.T.: 4.366 min
 Delta R.T.: -0.023 min
 Response: 75177506
 Conc: 16.44 ng/ml m

Instrument :
 ECD_Q
ClientSampled :
 RBR-200052RE

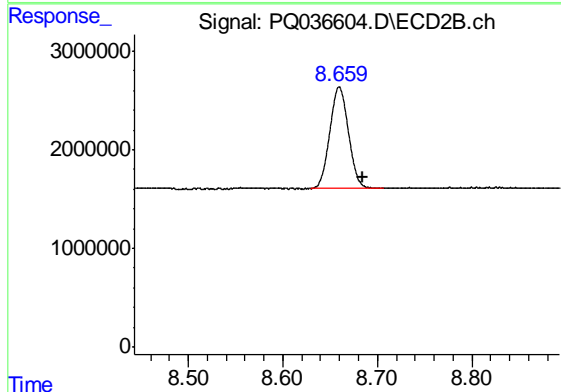
Manual Integrations
APPROVED
 Sohil
 1/23/2019 1:10:52 PM



#1 Tetrachloro-m-xylene
 R.T.: 3.710 min
 Delta R.T.: -0.011 min
 Response: 40484366
 Conc: 16.73 ng/ml



#2 Decachlorobiphenyl
 R.T.: 9.986 min
 Delta R.T.: -0.058 min
 Response: 25870957
 Conc: 7.11 ng/ml



#2 Decachlorobiphenyl
 R.T.: 8.660 min
 Delta R.T.: -0.025 min
 Response: 14174803
 Conc: 7.37 ng/ml