

Data Path : Z:\pestpcbsrv\HPCHEM1\ECD_Q\Data\PQ012219\
 Data File : PQ036623.D
 Signal(s) : Signal #1: ECD1A.ch Signal #2: ECD2B.ch
 Acq On : 22 Jan 2019 18:50
 Operator : SM\SJ
 Sample : AR1660CCC500
 Misc :
 ALS Vial : 3 Sample Multiplier: 1

Instrument :
 ECD_Q
ClientSampled :
 AR1660CCC500

Manual Integrations
APPROVED
 Sohil
 1/23/2019 1:10:55 PM

Integration File signal 1: autoint1.e
 Integration File signal 2: autoint2.e
 Quant Time: Jan 22 23:47:21 2019
 Quant Method : Z:\pestpcbsrv\HPCHEM1\ECD_Q\Method\PQ010819.M
 Quant Title : GC EXTRACTABLES
 QLast Update : Wed Jan 09 07:07:45 2019
 Response via : Initial Calibration
 Integrator: ChemStation

Volume Inj. : 2 µl
 Signal #1 Phase : ZB-MR1 Signal #2 Phase: ZB-MR2
 Signal #1 Info : 30Mx0.32mmx 0.50µ Signal #2 Info : 30M x 0.32mm x 0.25µm

Compound	RT#1	RT#2	Resp#1	Resp#2	ng/ml	ng/ml

System Monitoring Compounds						
1) SA Tetrachlo...	4.359	3.711	249.9E6	139.6E6	54.663m	57.659
2) SA Decachlor...	9.968	8.654	187.2E6	86913695	51.466m	45.210m
Target Compounds						
3) L1 AR-1016-1	5.516	4.782	62902139	38693253	449.552m	498.540
4) L1 AR-1016-2	5.538	4.800	98082373	56363286	459.471	494.903
5) L1 AR-1016-3	5.599	4.975	56231716	28509341	453.261	492.789
6) L1 AR-1016-4	5.699	5.014	45910820	22339880	453.389m	473.918
7) L1 AR-1016-5	5.988	5.226	44399922	27947686	444.632m	459.401
31) L7 AR-1260-1	7.100	6.244	79914503	50875443	419.742	427.255
32) L7 AR-1260-2	7.355	6.431	97588676	62519838	425.240m	435.475
33) L7 AR-1260-3	7.712	6.582	59003236	56447002	419.027m	427.505m
34) L7 AR-1260-4	7.940	7.048	74626107	37558222	432.811m	417.822m
35) L7 AR-1260-5	8.253	7.290	151.7E6	96290298	451.954m	435.836

(f)=RT Delta > 1/2 Window (#)=Amounts differ by > 25% (m)=manual int.

Data Path : Z:\pestpcbsrv\HPCHEM1\ECD_Q\Data\PQ012219\
 Data File : PQ036623.D
 Signal(s) : Signal #1: ECD1A.ch Signal #2: ECD2B.ch
 Acq On : 22 Jan 2019 18:50
 Operator : SM\SJ
 Sample : AR1660CCC500
 Misc :
 ALS Vial : 3 Sample Multiplier: 1

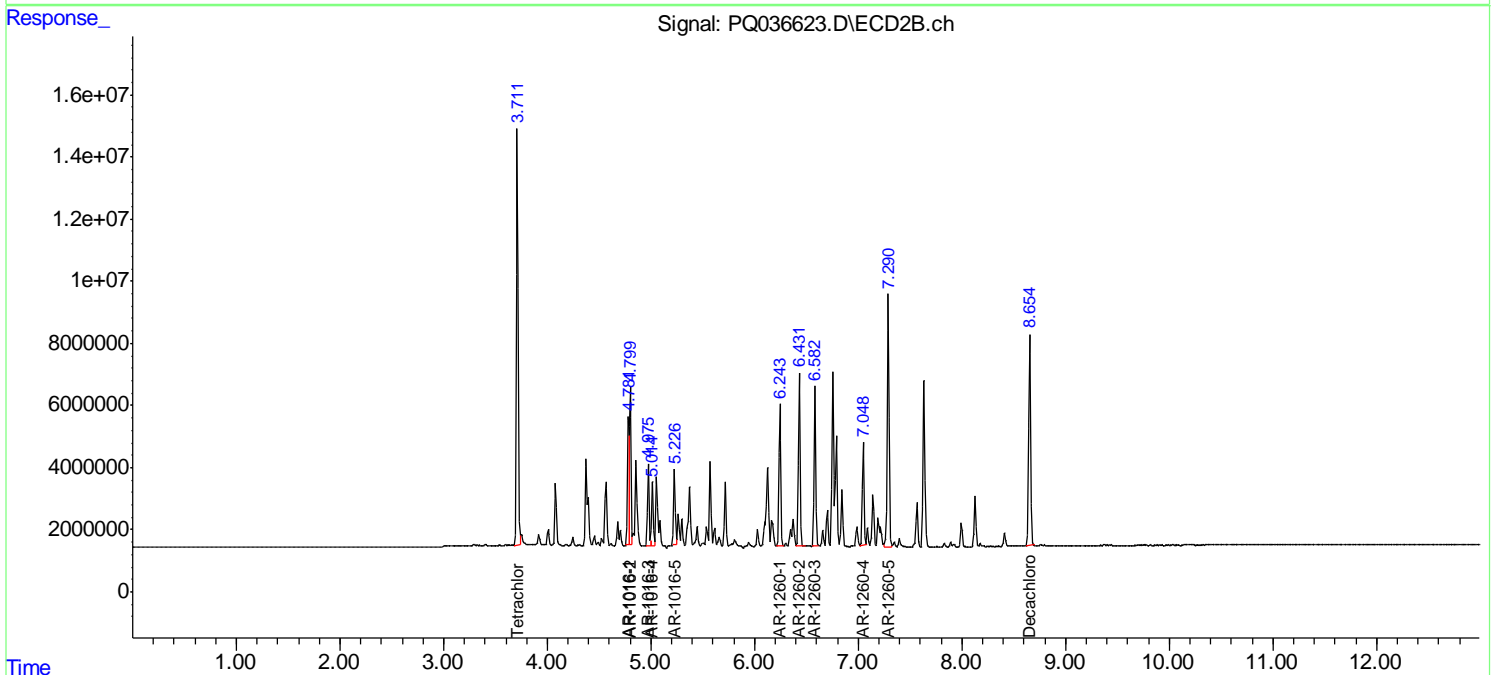
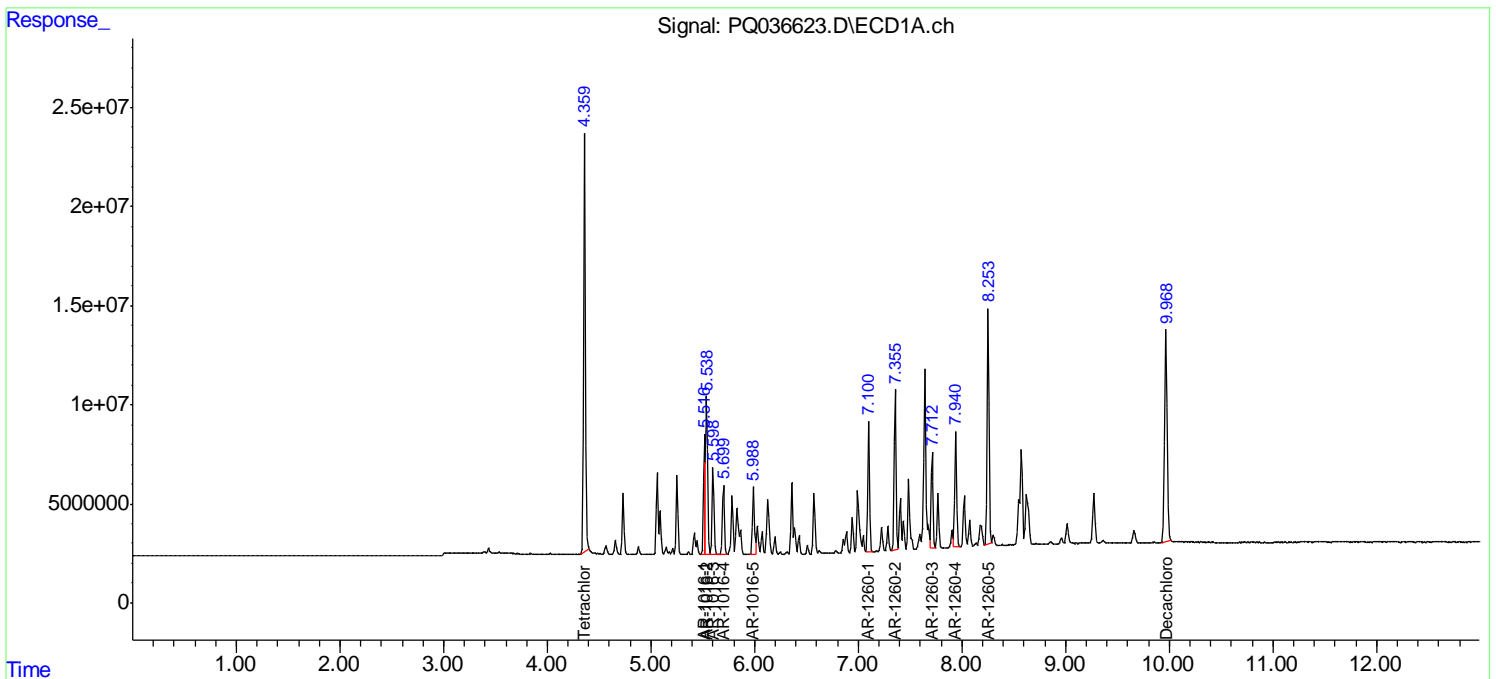
Instrument :
 ECD_Q
 Client Sampled :
 AR1660CCC500

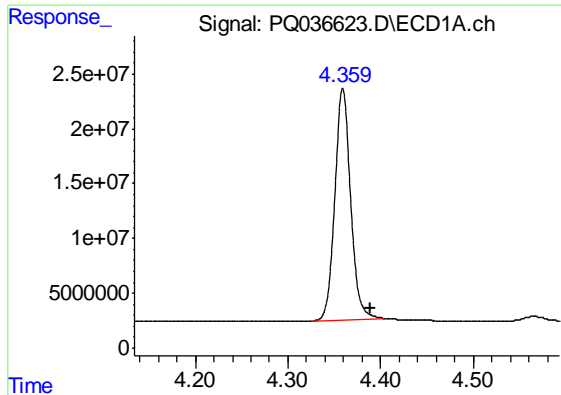
Manual Integrations
 APPROVED

Sohil
 1/23/2019 1:10:55 PM

Integration File signal 1: autoint1.e
 Integration File signal 2: autoint2.e
 Quant Time: Jan 22 23:47:21 2019
 Quant Method : Z:\pestpcbsrv\HPCHEM1\ECD_Q\Method\PQ010819.M
 Quant Title : GC EXTRACTABLES
 QLast Update : Wed Jan 09 07:07:45 2019
 Response via : Initial Calibration
 Integrator: ChemStation

Volume Inj. : 2 µl
 Signal #1 Phase : ZB-MR1 Signal #2 Phase: ZB-MR2
 Signal #1 Info : 30Mx0.32mmx 0.50µ Signal #2 Info : 30M x 0.32mm x 0.25µm

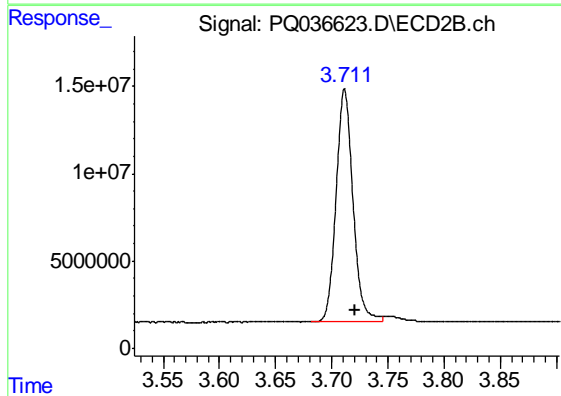




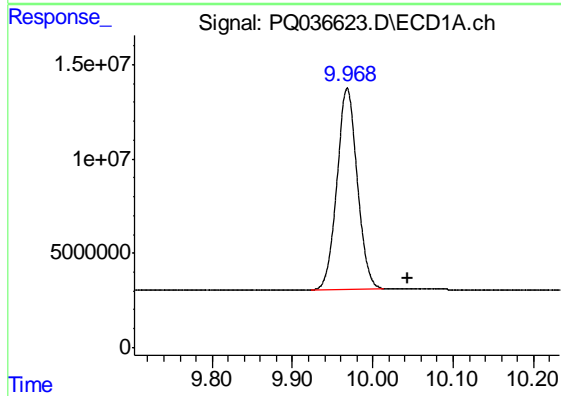
#1 Tetrachloro-m-xylene
 R.T.: 4.359 min
 Delta R.T.: -0.030 min
 Response: 249891218
 Conc: 54.66 ng/ml m

Instrument :
 ECD_Q
 ClientSampled :
 AR1660CCC500

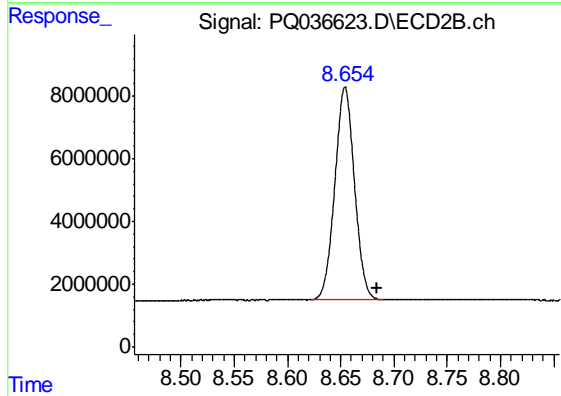
Manual Integrations
 APPROVED
 Sohil
 1/23/2019 1:10:55 PM



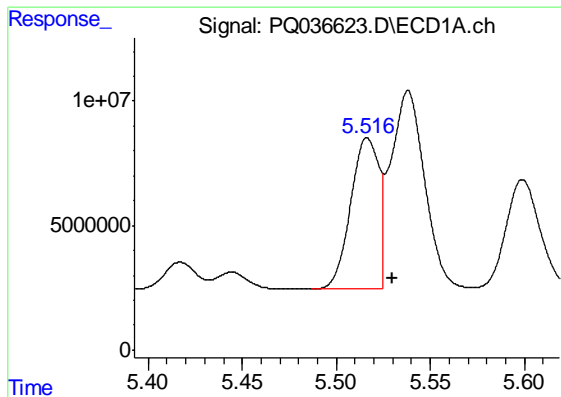
#1 Tetrachloro-m-xylene
 R.T.: 3.711 min
 Delta R.T.: -0.010 min
 Response: 139563207
 Conc: 57.66 ng/ml m



#2 Decachlorobiphenyl
 R.T.: 9.968 min
 Delta R.T.: -0.076 min
 Response: 187205502
 Conc: 51.47 ng/ml m



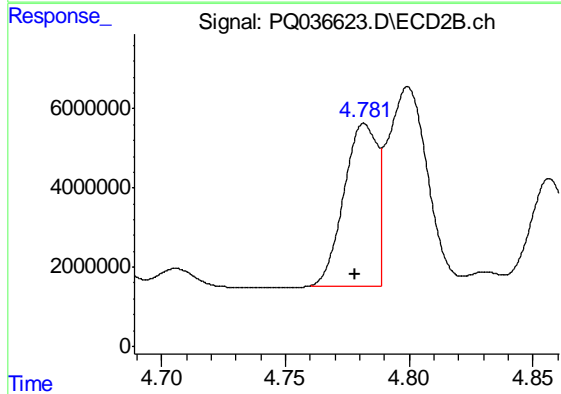
#2 Decachlorobiphenyl
 R.T.: 8.654 min
 Delta R.T.: -0.030 min
 Response: 86913695
 Conc: 45.21 ng/ml m



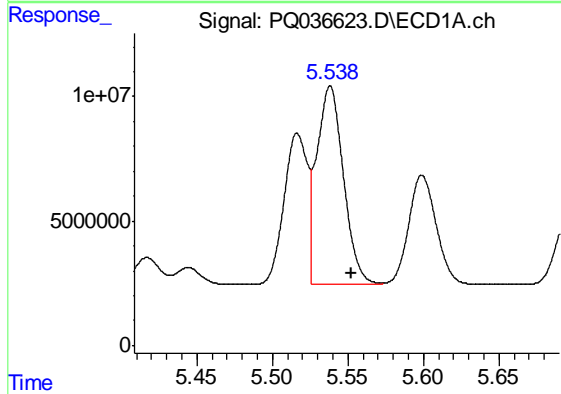
#3 AR-1016-1
 R.T.: 5.516 min
 Delta R.T.: -0.014 min
 Response: 62902139
 Conc: 449.55 ng/ml m

Instrument :
 ECD_Q
ClientSampled :
 AR1660CCC500

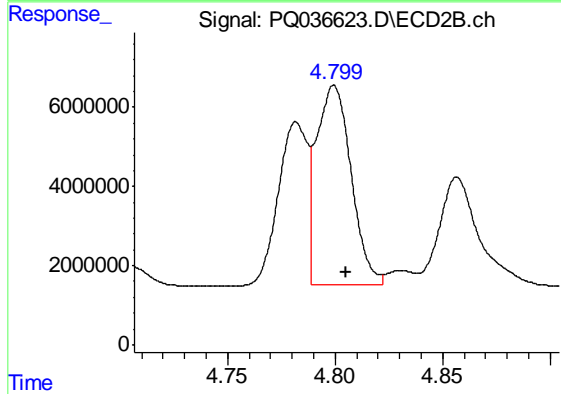
Manual Integrations
APPROVED
 Sohil
 1/23/2019 1:10:55 PM



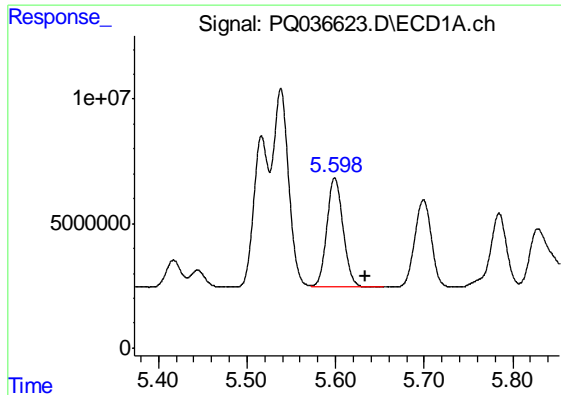
#3 AR-1016-1
 R.T.: 4.782 min
 Delta R.T.: 0.004 min
 Response: 38693253
 Conc: 498.54 ng/ml



#4 AR-1016-2
 R.T.: 5.538 min
 Delta R.T.: -0.014 min
 Response: 98082373
 Conc: 459.47 ng/ml



#4 AR-1016-2
 R.T.: 4.800 min
 Delta R.T.: -0.005 min
 Response: 56363286
 Conc: 494.90 ng/ml

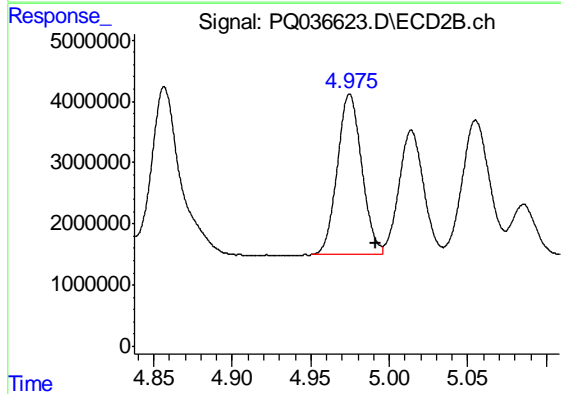


#5 AR-1016-3

R.T.: 5.599 min
 Delta R.T.: -0.035 min
 Response: 56231716
 Conc: 453.26 ng/ml

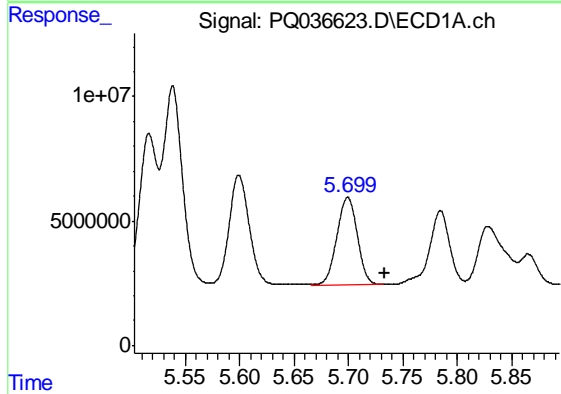
Instrument :
 ECD_Q
ClientSampled :
 AR1660CCC500

Manual Integrations
APPROVED
 Sohil
 1/23/2019 1:10:55 PM



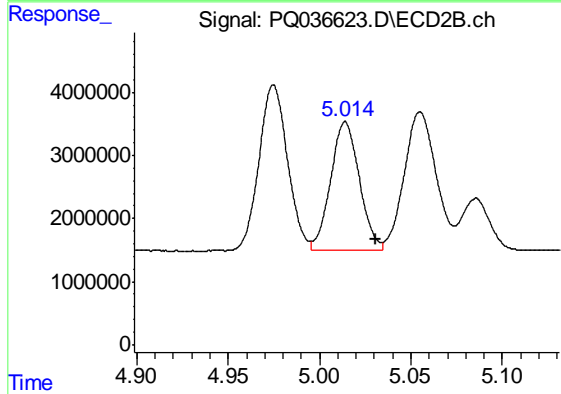
#5 AR-1016-3

R.T.: 4.975 min
 Delta R.T.: -0.016 min
 Response: 28509341
 Conc: 492.79 ng/ml



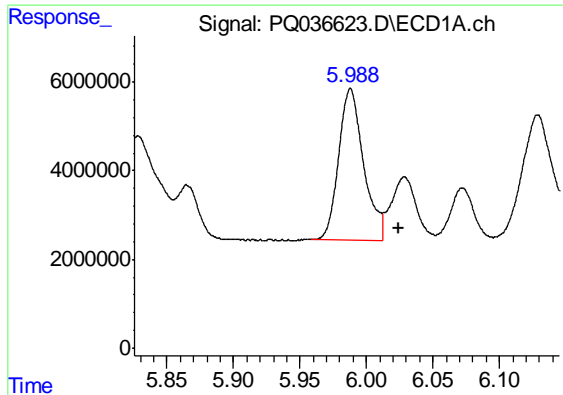
#6 AR-1016-4

R.T.: 5.699 min
 Delta R.T.: -0.035 min
 Response: 45910820
 Conc: 453.39 ng/ml m



#6 AR-1016-4

R.T.: 5.014 min
 Delta R.T.: -0.016 min
 Response: 22339880
 Conc: 473.92 ng/ml



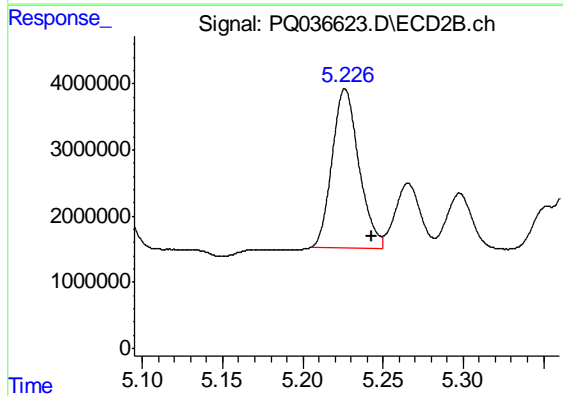
#7 AR-1016-5

R.T.: 5.988 min
 Delta R.T.: -0.036 min
 Response: 44399922
 Conc: 444.63 ng/ml m

Instrument :
 ECD_Q
 ClientSampled :
 AR1660CCC500

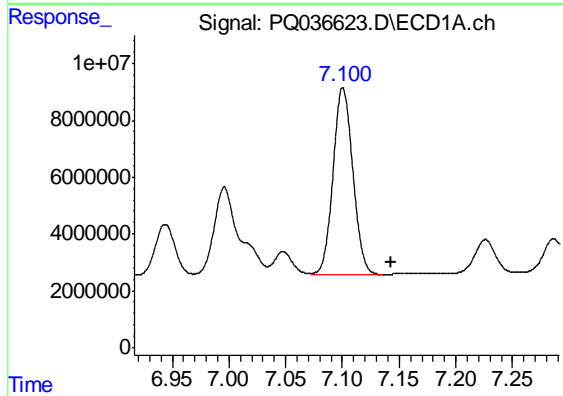
Manual Integrations
 APPROVED

Sohil
 1/23/2019 1:10:55 PM



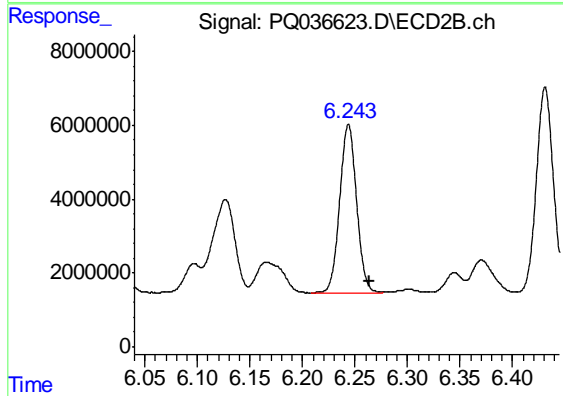
#7 AR-1016-5

R.T.: 5.226 min
 Delta R.T.: -0.017 min
 Response: 27947686
 Conc: 459.40 ng/ml



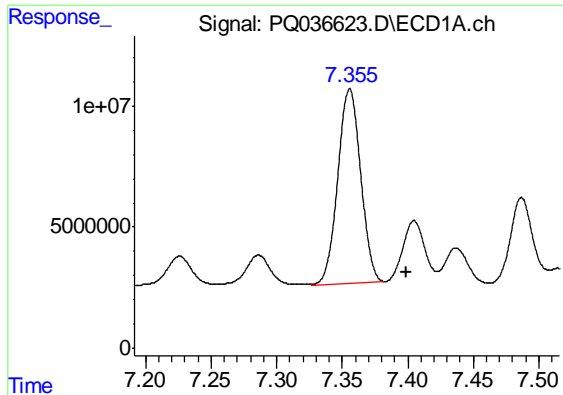
#31 AR-1260-1

R.T.: 7.100 min
 Delta R.T.: -0.043 min
 Response: 79914503
 Conc: 419.74 ng/ml



#31 AR-1260-1

R.T.: 6.244 min
 Delta R.T.: -0.020 min
 Response: 50875443
 Conc: 427.25 ng/ml



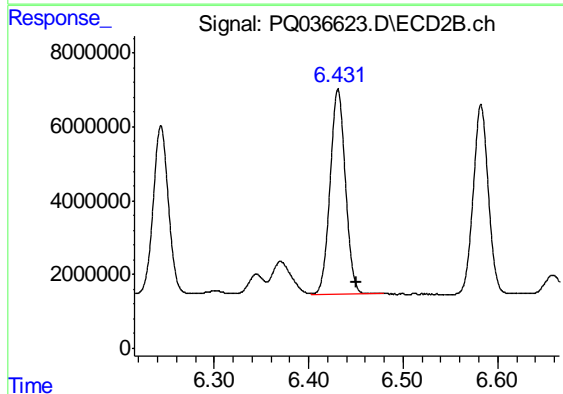
#32 AR-1260-2

R.T.: 7.355 min
 Delta R.T.: -0.043 min
 Response: 97588676
 Conc: 425.24 ng/ml m

Instrument :
 ECD_Q
 ClientSampled :
 AR1660CCC500

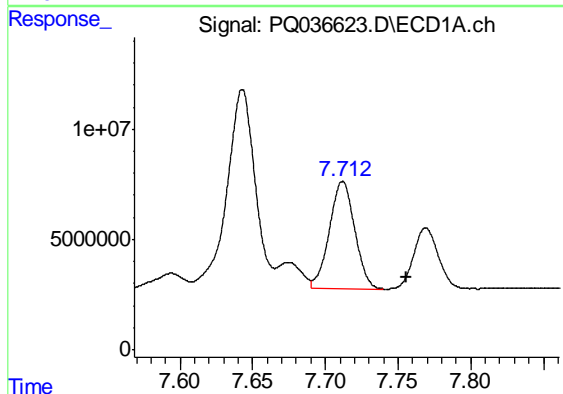
Manual Integrations
 APPROVED

Sohil
 1/23/2019 1:10:55 PM



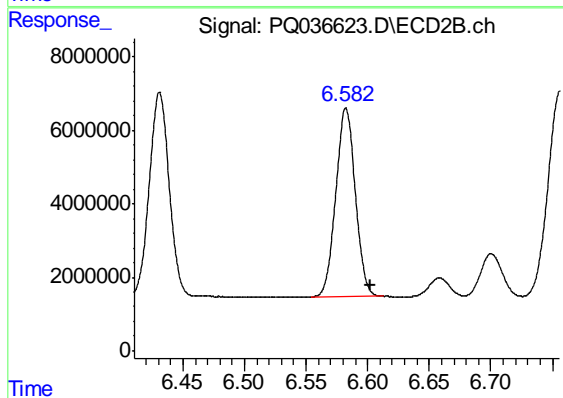
#32 AR-1260-2

R.T.: 6.431 min
 Delta R.T.: -0.020 min
 Response: 62519838
 Conc: 435.47 ng/ml



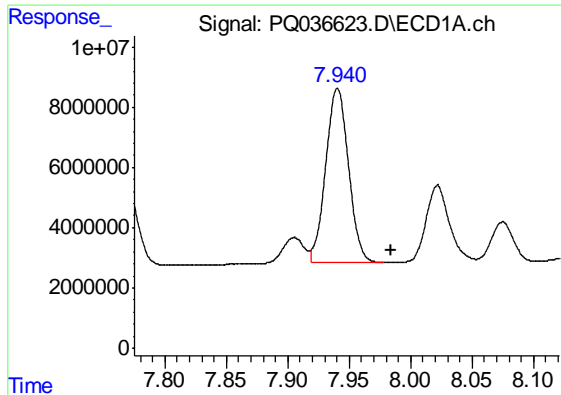
#33 AR-1260-3

R.T.: 7.712 min
 Delta R.T.: -0.044 min
 Response: 59003236
 Conc: 419.03 ng/ml m



#33 AR-1260-3

R.T.: 6.582 min
 Delta R.T.: -0.021 min
 Response: 56447002
 Conc: 427.51 ng/ml m



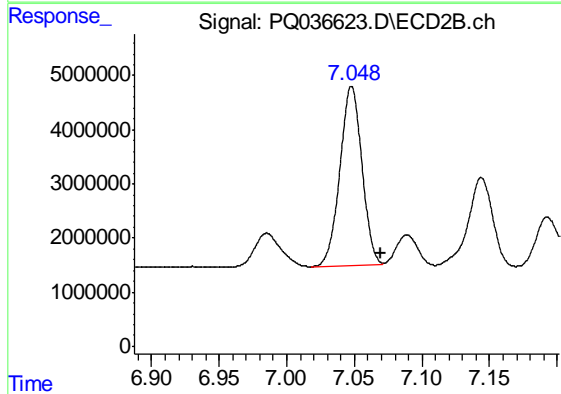
#34 AR-1260-4

R.T.: 7.940 min
 Delta R.T.: -0.044 min
 Response: 74626107
 Conc: 432.81 ng/ml m

Instrument :
 ECD_Q
 ClientSampled :
 AR1660CCC500

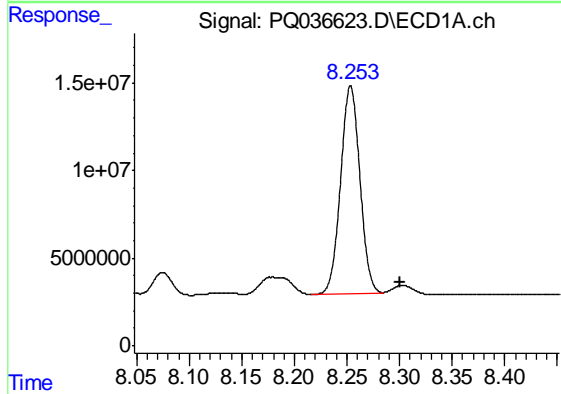
Manual Integrations
 APPROVED

Sohil
 1/23/2019 1:10:55 PM



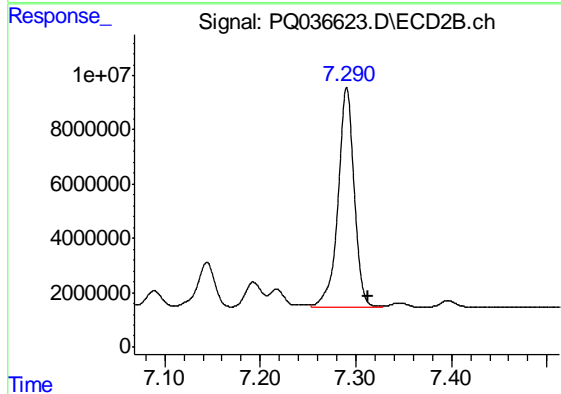
#34 AR-1260-4

R.T.: 7.048 min
 Delta R.T.: -0.022 min
 Response: 37558222
 Conc: 417.82 ng/ml m



#35 AR-1260-5

R.T.: 8.253 min
 Delta R.T.: -0.047 min
 Response: 151700823
 Conc: 451.95 ng/ml m



#35 AR-1260-5

R.T.: 7.290 min
 Delta R.T.: -0.023 min
 Response: 96290298
 Conc: 435.84 ng/ml