

Data Path : Z:\pestpcbsrv\HPCHEM1\ECD_Q\Data\PQ012619\
 Data File : PQ036774.D
 Signal(s) : Signal #1: ECD1A.ch Signal #2: ECD2B.ch
 Acq On : 25 Jan 2019 19:44
 Operator : SM\SJ
 Sample : AR1660CCC500
 Misc :
 ALS Vial : 3 Sample Multiplier: 1

Instrument :
 ECD_Q
 ClientSampled :
 AR1660CCC500

Integration File signal 1: autoint1.e
 Integration File signal 2: autoint2.e
 Quant Time: Jan 27 23:54:32 2019
 Quant Method : Z:\pestpcbsrv\HPCHEM1\ECD_Q\Method\PQ012419.M
 Quant Title : GC EXTRACTABLES
 QLast Update : Thu Jan 24 06:01:26 2019
 Response via : Initial Calibration
 Integrator: ChemStation

Volume Inj. : 2 µl
 Signal #1 Phase : ZB-MR1 Signal #2 Phase: ZB-MR2
 Signal #1 Info : 30Mx0.32mmx 0.50µ Signal #2 Info : 30M x 0.32mm x 0.25µm

Compound	RT#1	RT#2	Resp#1	Resp#2	ng/ml	ng/ml

System Monitoring Compounds						
1) SA Tetrachlo...	4.345	3.704	349.1E6	197.8E6	75.854	82.559
2) SA Decachlor...	9.943	8.642	182.6E6	80644937	50.083	42.868
Target Compounds						
3) L1 AR-1016-1	5.523	4.774	130.8E6	53285296	931.929	707.431
4) L1 AR-1016-2	5.523	4.791	130.8E6	77322637	619.536	694.740
5) L1 AR-1016-3	5.583	4.967	75803812	34032048	611.527	603.451
6) L1 AR-1016-4	5.683	5.006	60012556	26984967	603.471	597.353
7) L1 AR-1016-5	5.972	5.218	55602042	34813884	563.262	596.854
8) L2 AR-1221-1	4.550	3.911	9010138	4956049	197.897	196.059
9) L2 AR-1221-2	4.642	4.000	13471164	7590633	400.136	404.421
10) L2 AR-1221-3	4.717	4.073	50080525	28796236	447.964	478.066
11) L3 AR-1232-1	4.717	4.073	50080525	28796236	537.903	572.369
12) L3 AR-1232-2	5.237	4.791	64266514	77322637	1367.402	1441.558
13) L3 AR-1232-3	5.523	4.967	130.8E6	34032048	1320.573	1332.221
14) L3 AR-1232-4	5.683	5.047	60012556	33587038	1289.667	1418.650
15) L3 AR-1232-5	5.768	5.218	51492124	34813884	1500.253	1378.038
16) L4 AR-1242-1	5.501	4.774	88591918	53285296	764.329	848.500
17) L4 AR-1242-2	5.523	4.791	130.8E6	77322637	737.499	828.484
18) L4 AR-1242-3	5.583	4.967	75803812	34032048	730.883	727.310
19) L4 AR-1242-4	5.683	5.047	60012556	33587038	713.475	735.092
20) L4 AR-1242-5	6.412	5.564	14399967	39384689	158.700	703.570 #
21) L5 AR-1248-1	5.501	4.774	88591918	53285296	985.860	1080.489
22) L5 AR-1248-2	5.768	5.006	51492124	26984967	422.039	415.920
23) L5 AR-1248-3	5.972	5.047	55602042	33587038	404.871	506.841 #
24) L5 AR-1248-4	6.373	5.218	18303061	34813884	116.619	438.329 #
25) L5 AR-1248-5	6.412	5.605	14399967	8158833	97.037	103.261
26) L6 AR-1254-1	6.344	5.564	54900154	39384689	309.597	294.173
27) L6 AR-1254-2	6.557	5.709	49217748	28623673	188.932	258.661 #
28) L6 AR-1254-3	6.927	6.119	25548209	45794853	95.423	254.422 #
29) L6 AR-1254-4	7.211	6.336	14325226	6659595	72.202	50.468 #
30) L6 AR-1254-5	7.627	6.747	129.5E6	83686767	634.319	557.230
31) L7 AR-1260-1	7.085	6.235	91496134	62203356	469.789	541.877
32) L7 AR-1260-2	7.339	6.422	108.3E6	73113462	468.826	520.064
33) L7 AR-1260-3	7.696	6.574	66192109	66569541	459.000	519.380
34) L7 AR-1260-4	7.925	7.039	75144700	42687624	441.345	490.274
35) L7 AR-1260-5	8.237	7.282	153.9E6	105.6E6	457.593	483.551
36) L8 AR-1262-1	7.696	6.781	66192109	49209940	238.970	293.215
37) L8 AR-1262-2	8.237	7.282	153.9E6	105.6E6	313.806	348.649
38) L8 AR-1262-3	8.557	7.558	64542508	17676216	310.333	157.377 #
39) L8 AR-1262-4	8.606	7.625	54616322	72854884	225.154	337.734 #
40) L8 AR-1262-5	9.253	8.119	30133198	18194231	185.192	193.456
41) L9 AR-1268-1	8.530	7.558	27394593	17676216	43.426	48.632

Data Path : Z:\pestpcbsrv\HPCHEM1\ECD_Q\Data\PQ012619\
 Data File : PQ036774.D
 Signal(s) : Signal #1: ECD1A.ch Signal #2: ECD2B.ch
 Acq On : 25 Jan 2019 19:44
 Operator : SM\SJ
 Sample : AR1660CCC500
 Misc :
 ALS Vial : 3 Sample Multiplier: 1

Instrument :
 ECD_Q
 ClientSampleId :
 AR1660CCC500

Integration File signal 1: autoint1.e
 Integration File signal 2: autoint2.e
 Quant Time: Jan 27 23:54:32 2019
 Quant Method : Z:\pestpcbsrv\HPCHEM1\ECD_Q\Method\PQ012419.M
 Quant Title : GC EXTRACTABLES
 QLast Update : Thu Jan 24 06:01:26 2019
 Response via : Initial Calibration
 Integrator: ChemStation

Volume Inj. : 2 µl
 Signal #1 Phase : ZB-MR1 Signal #2 Phase: ZB-MR2
 Signal #1 Info : 30Mx0.32mmx 0.50µ Signal #2 Info : 30M x 0.32mm x 0.25µm

	Compound	RT#1	RT#2	Resp#1	Resp#2	ng/ml	ng/ml
42)	L9 AR-1268-2	8.606	7.625	54616322	72854884	92.804	219.885 #
43)	L9 AR-1268-3	8.833	7.821	2815439	1062350	5.563	3.897 #
44)	L9 AR-1268-4	9.253	8.119	30133198	18194231	154.725	162.972
45)	L9 AR-1268-5	9.637	8.402	9983849	5326854	6.151	6.151

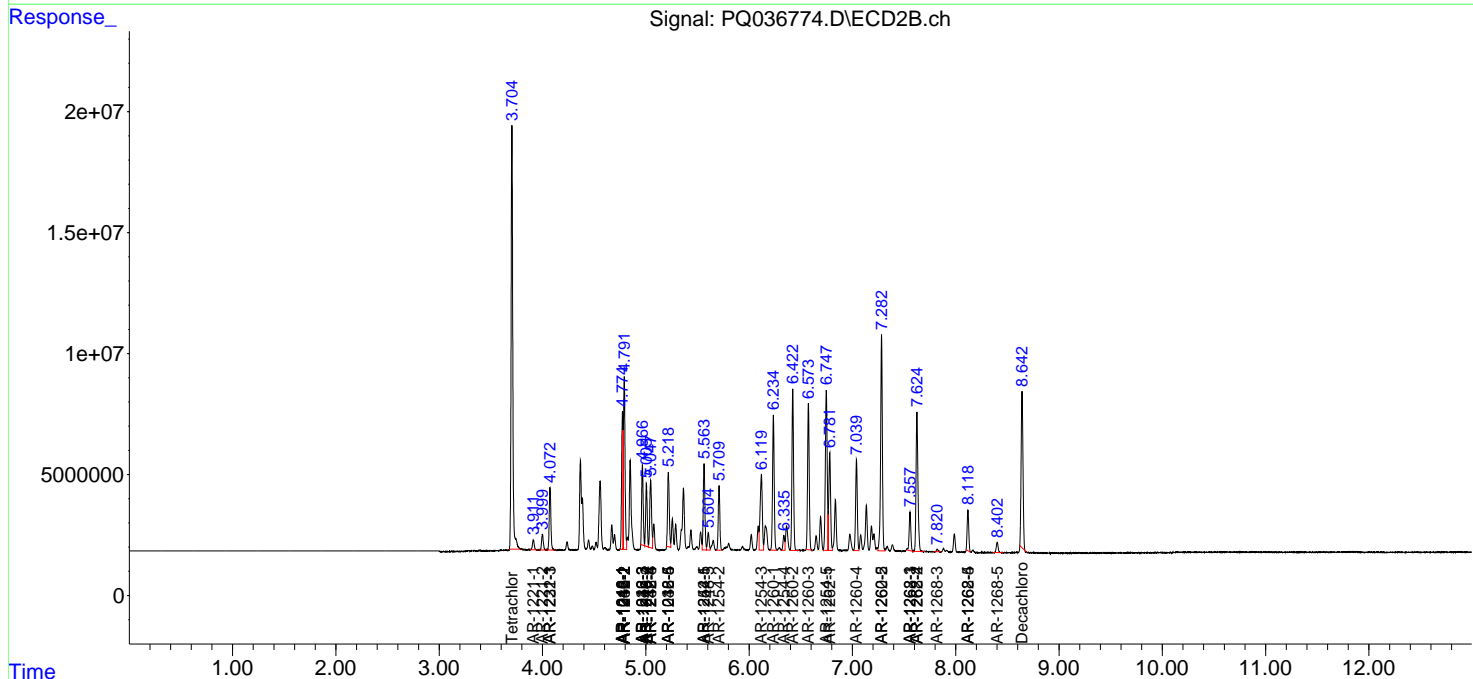
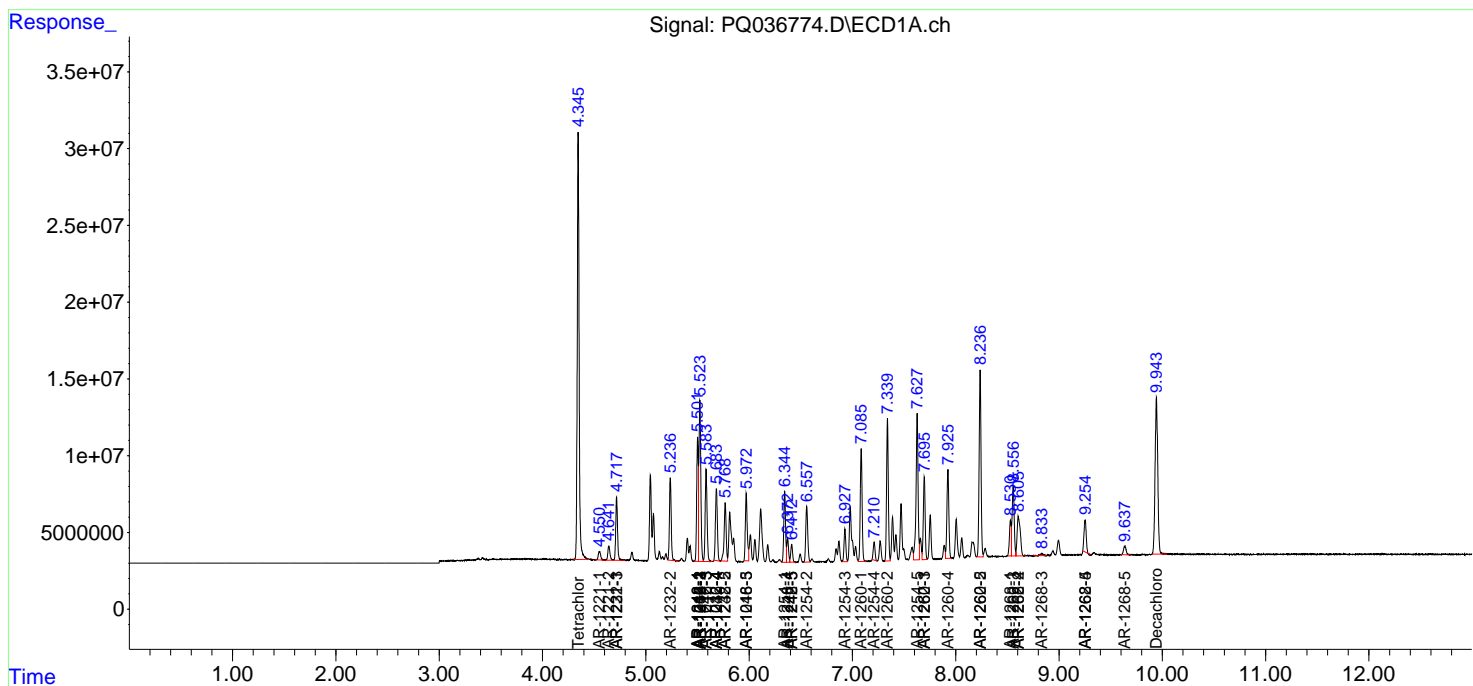
(f)=RT Delta > 1/2 Window (#)=Amounts differ by > 25% (m)=manual int.

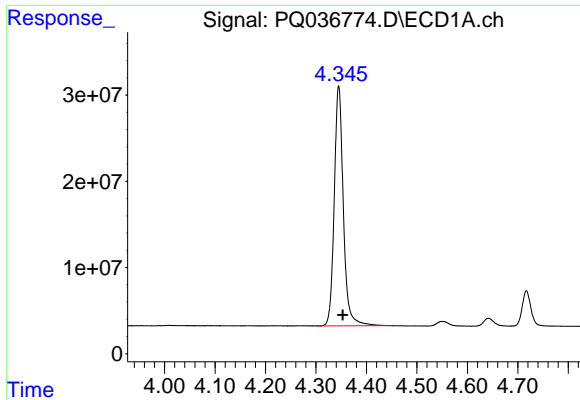
Data Path : Z:\pestpcbsrv\HPCHEM1\ECD_Q\Data\PQ012619\
 Data File : PQ036774.D
 Signal(s) : Signal #1: ECD1A.ch Signal #2: ECD2B.ch
 Acq On : 25 Jan 2019 19:44
 Operator : SM\SJ
 Sample : AR1660CCC500
 Misc :
 ALS Vial : 3 Sample Multiplier: 1

Instrument :
 ECD_Q
 ClientSampleId :
 AR1660CCC500

Integration File signal 1: autoint1.e
 Integration File signal 2: autoint2.e
 Quant Time: Jan 27 23:54:32 2019
 Quant Method : Z:\pestpcbsrv\HPCHEM1\ECD_Q\Method\PQ012419.M
 Quant Title : GC EXTRACTABLES
 QLast Update : Thu Jan 24 06:01:26 2019
 Response via : Initial Calibration
 Integrator: ChemStation

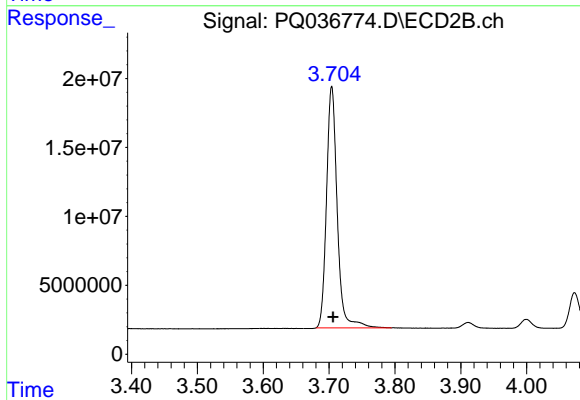
Volume Inj. : 2 µl
 Signal #1 Phase : ZB-MR1 Signal #2 Phase: ZB-MR2
 Signal #1 Info : 30Mx0.32mmx 0.50µ Signal #2 Info : 30M x 0.32mm x 0.25µm



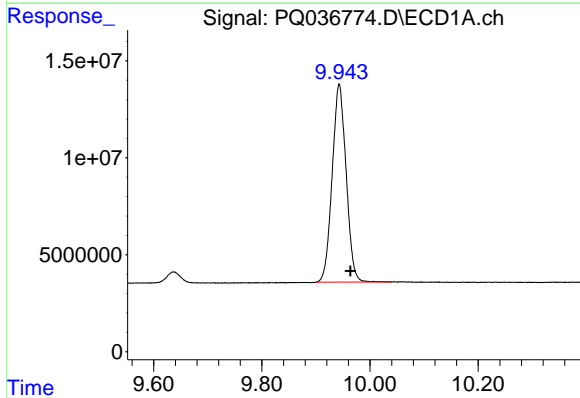


#1 Tetrachloro-m-xylene
 R.T.: 4.345 min
 Delta R.T.: -0.008 min
 Response: 349141072
 Conc: 75.85 ng/ml

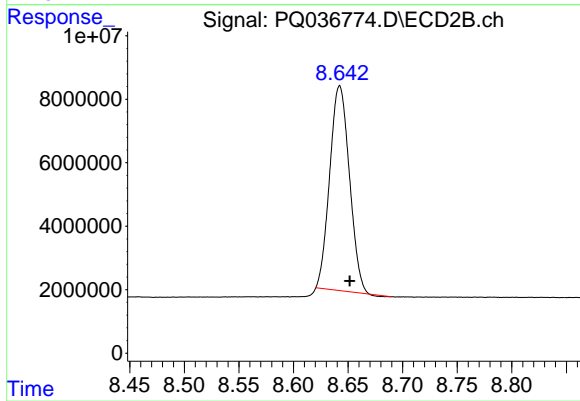
Instrument :
 ECD_Q
 ClientSampleId :
 AR1660CCC500



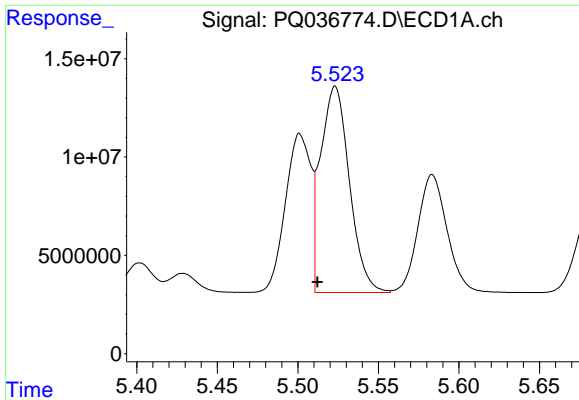
#1 Tetrachloro-m-xylene
 R.T.: 3.704 min
 Delta R.T.: -0.002 min
 Response: 197811504
 Conc: 82.56 ng/ml



#2 Decachlorobiphenyl
 R.T.: 9.943 min
 Delta R.T.: -0.021 min
 Response: 182587764
 Conc: 50.08 ng/ml



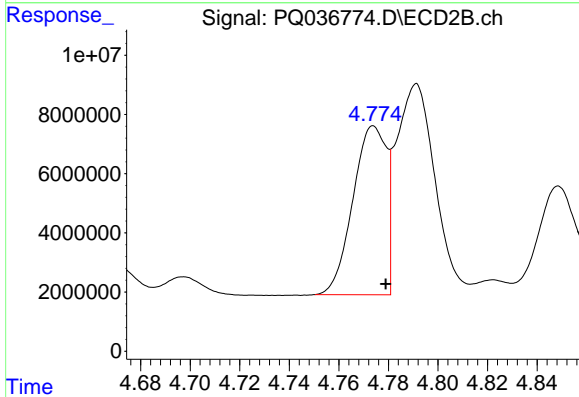
#2 Decachlorobiphenyl
 R.T.: 8.642 min
 Delta R.T.: -0.009 min
 Response: 80644937
 Conc: 42.87 ng/ml



#3 AR-1016-1

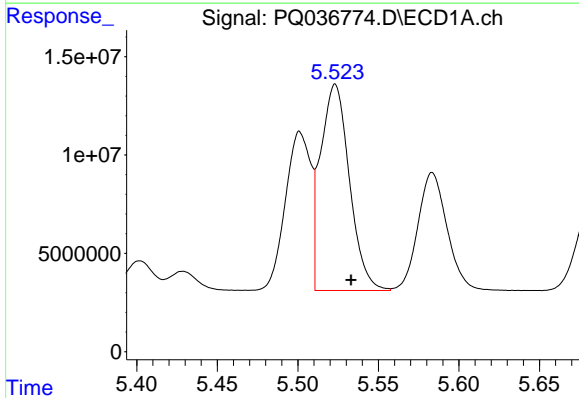
R.T.: 5.523 min
 Delta R.T.: 0.011 min
 Response: 130755366
 Conc: 931.93 ng/ml

Instrument :
 ECD_Q
 ClientSampleId :
 AR1660CCC500



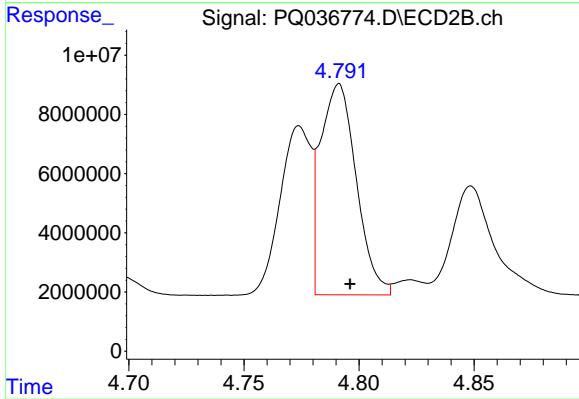
#3 AR-1016-1

R.T.: 4.774 min
 Delta R.T.: -0.005 min
 Response: 53285296
 Conc: 707.43 ng/ml



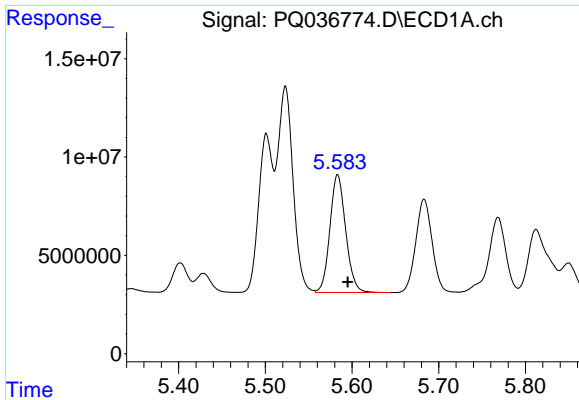
#4 AR-1016-2

R.T.: 5.523 min
 Delta R.T.: -0.010 min
 Response: 130755366
 Conc: 619.54 ng/ml



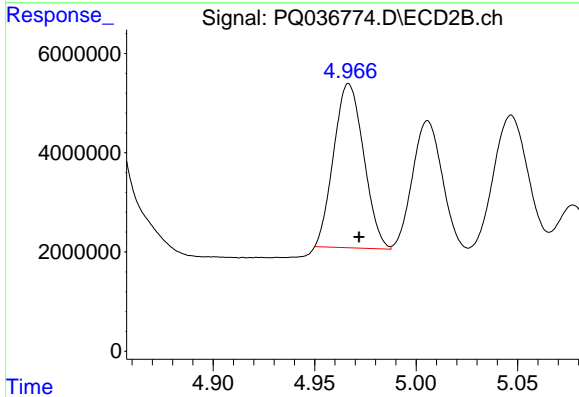
#4 AR-1016-2

R.T.: 4.791 min
 Delta R.T.: -0.005 min
 Response: 77322637
 Conc: 694.74 ng/ml

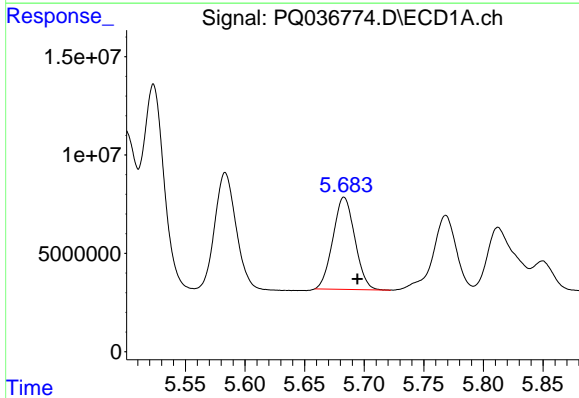


#5 AR-1016-3
 R.T.: 5.583 min
 Delta R.T.: -0.011 min
 Response: 75803812
 Conc: 611.53 ng/ml

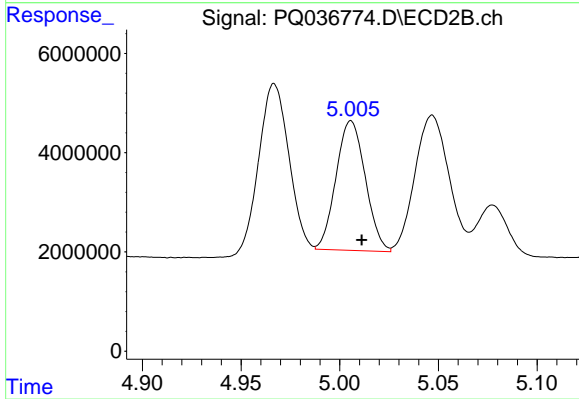
Instrument :
 ECD_Q
 ClientSampleId :
 AR1660CCC500



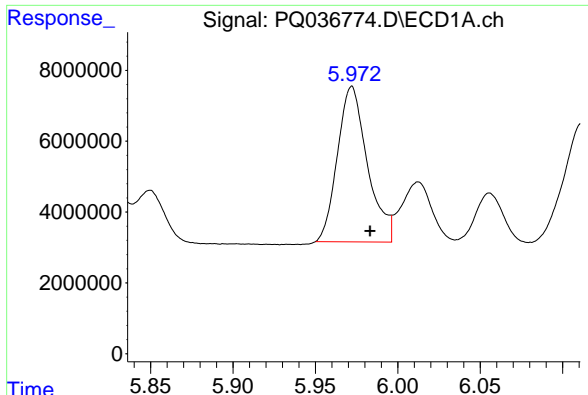
#5 AR-1016-3
 R.T.: 4.967 min
 Delta R.T.: -0.005 min
 Response: 34032048
 Conc: 603.45 ng/ml



#6 AR-1016-4
 R.T.: 5.683 min
 Delta R.T.: -0.011 min
 Response: 60012556
 Conc: 603.47 ng/ml



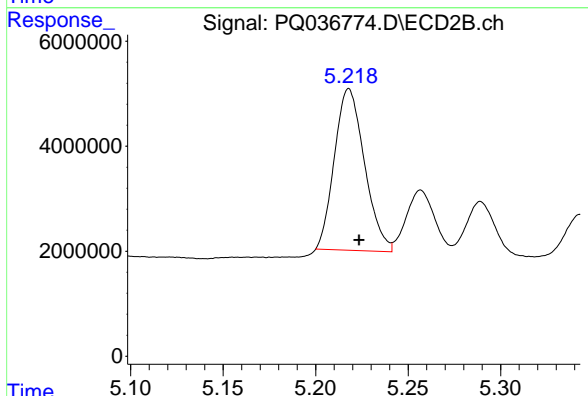
#6 AR-1016-4
 R.T.: 5.006 min
 Delta R.T.: -0.005 min
 Response: 26984967
 Conc: 597.35 ng/ml



#7 AR-1016-5

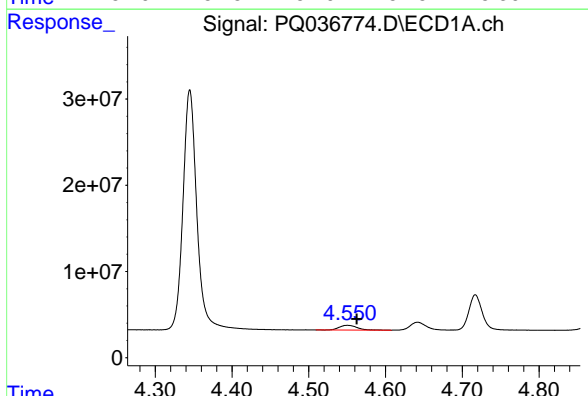
R.T.: 5.972 min
Delta R.T.: -0.011 min
Response: 55602042
Conc: 563.26 ng/ml

Instrument :
ECD_Q
ClientSampleId :
AR1660CCC500



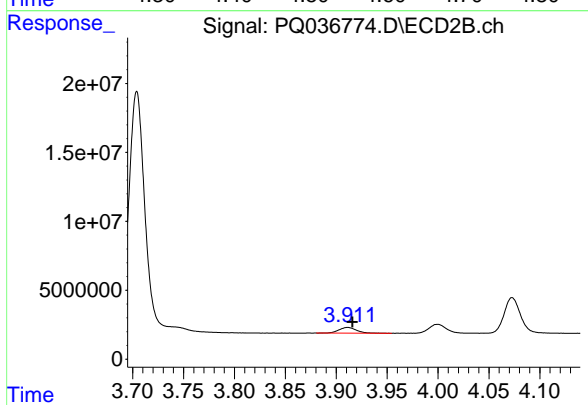
#7 AR-1016-5

R.T.: 5.218 min
Delta R.T.: -0.005 min
Response: 34813884
Conc: 596.85 ng/ml



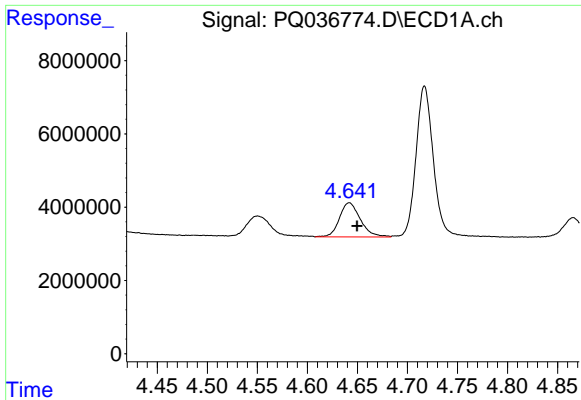
#8 AR-1221-1

R.T.: 4.550 min
Delta R.T.: -0.012 min
Response: 9010138
Conc: 197.90 ng/ml



#8 AR-1221-1

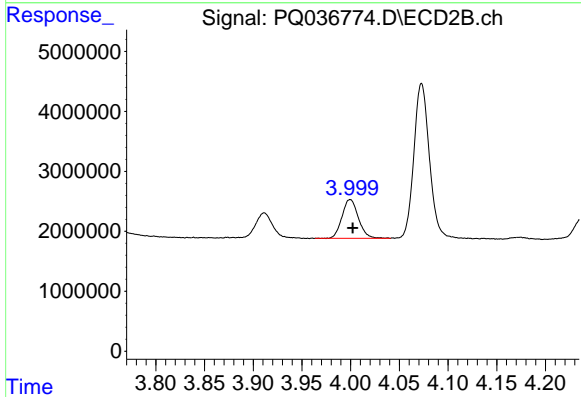
R.T.: 3.911 min
Delta R.T.: -0.004 min
Response: 4956049
Conc: 196.06 ng/ml



#9 AR-1221-2

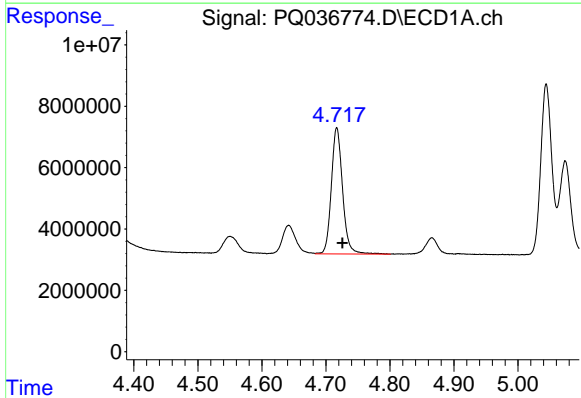
R.T.: 4.642 min
 Delta R.T.: -0.008 min
 Response: 13471164
 Conc: 400.14 ng/ml

Instrument :
 ECD_Q
 ClientSampleId :
 AR1660CCC500



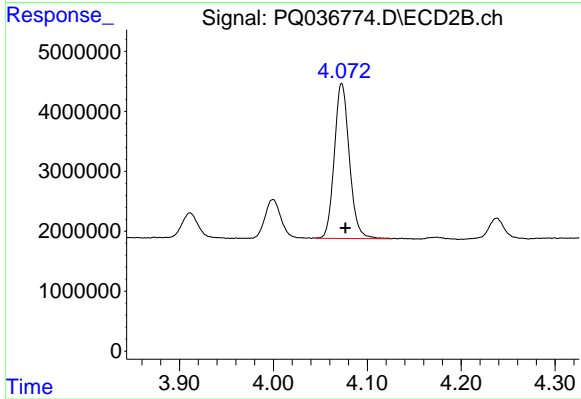
#9 AR-1221-2

R.T.: 4.000 min
 Delta R.T.: -0.003 min
 Response: 7590633
 Conc: 404.42 ng/ml



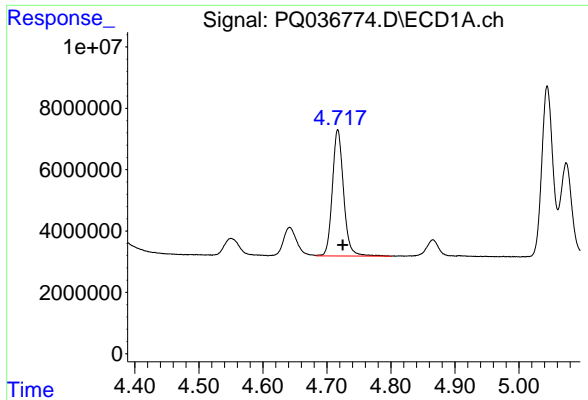
#10 AR-1221-3

R.T.: 4.717 min
 Delta R.T.: -0.009 min
 Response: 50080525
 Conc: 447.96 ng/ml



#10 AR-1221-3

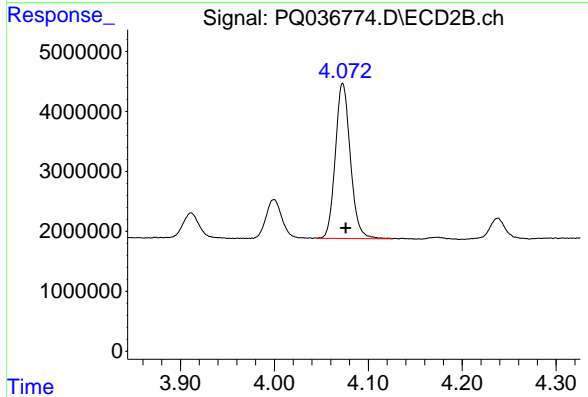
R.T.: 4.073 min
 Delta R.T.: -0.004 min
 Response: 28796236
 Conc: 478.07 ng/ml



#11 AR-1232-1

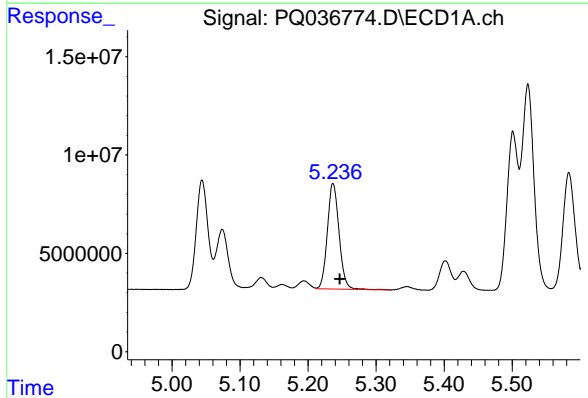
R.T.: 4.717 min
 Delta R.T.: -0.008 min
 Response: 50080525
 Conc: 537.90 ng/ml

Instrument :
 ECD_Q
 ClientSampleId :
 AR1660CCC500



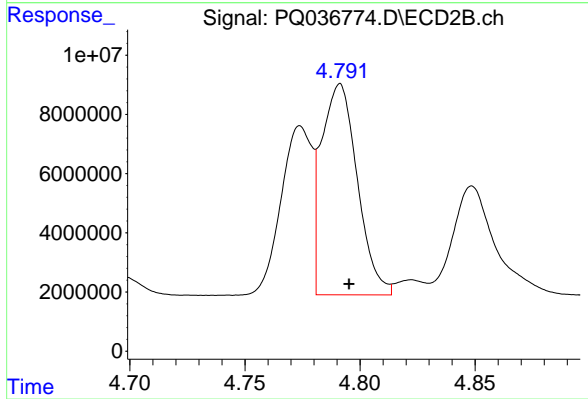
#11 AR-1232-1

R.T.: 4.073 min
 Delta R.T.: -0.003 min
 Response: 28796236
 Conc: 572.37 ng/ml



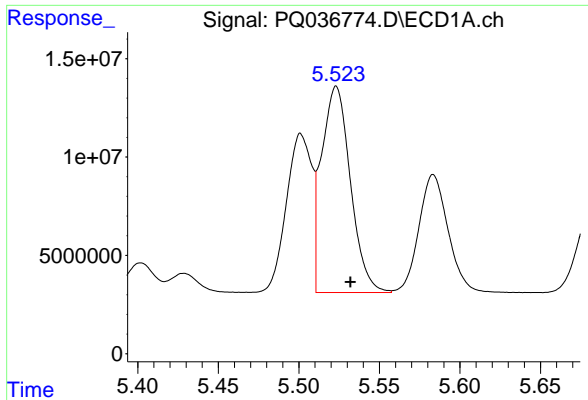
#12 AR-1232-2

R.T.: 5.237 min
 Delta R.T.: -0.010 min
 Response: 64266514
 Conc: 1367.40 ng/ml



#12 AR-1232-2

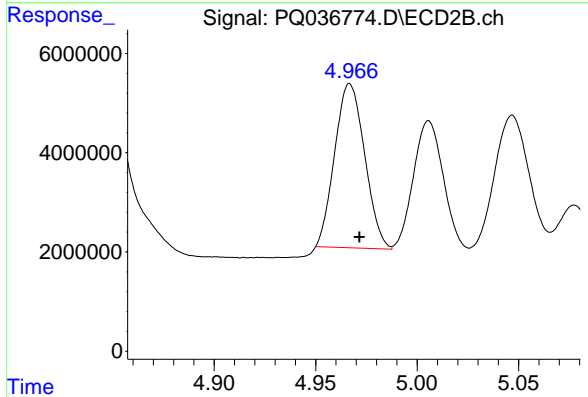
R.T.: 4.791 min
 Delta R.T.: -0.004 min
 Response: 77322637
 Conc: 1441.56 ng/ml



#13 AR-1232-3

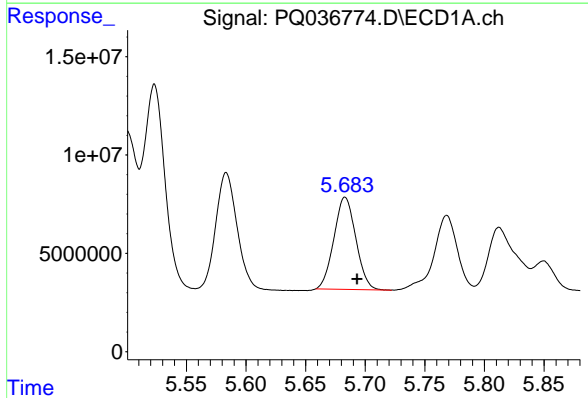
R.T.: 5.523 min
 Delta R.T.: -0.009 min
 Response: 130755366
 Conc: 1320.57 ng/ml

Instrument :
 ECD_Q
 ClientSampleId :
 AR1660CCC500



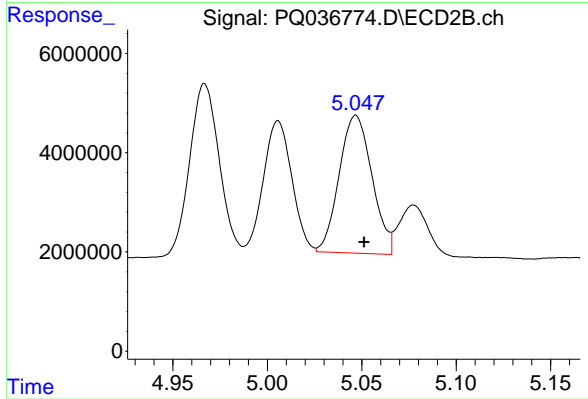
#13 AR-1232-3

R.T.: 4.967 min
 Delta R.T.: -0.005 min
 Response: 34032048
 Conc: 1332.22 ng/ml



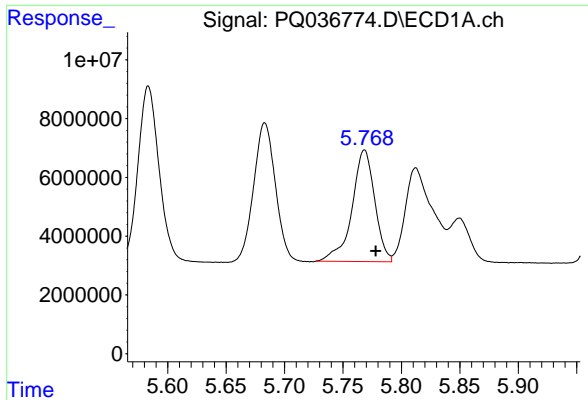
#14 AR-1232-4

R.T.: 5.683 min
 Delta R.T.: -0.010 min
 Response: 60012556
 Conc: 1289.67 ng/ml



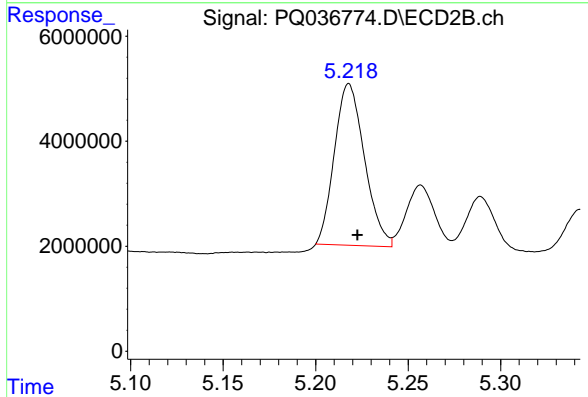
#14 AR-1232-4

R.T.: 5.047 min
 Delta R.T.: -0.004 min
 Response: 33587038
 Conc: 1418.65 ng/ml

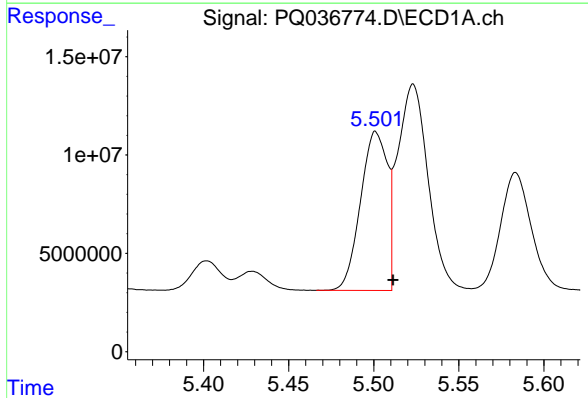


#15 AR-1232-5
 R.T.: 5.768 min
 Delta R.T.: -0.010 min
 Response: 51492124
 Conc: 1500.25 ng/ml

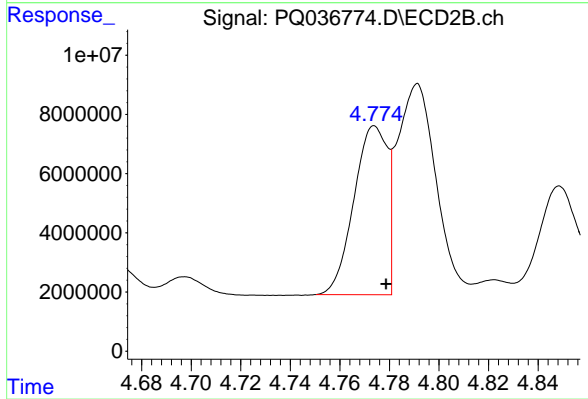
Instrument :
 ECD_Q
 ClientSampleId :
 AR1660CCC500



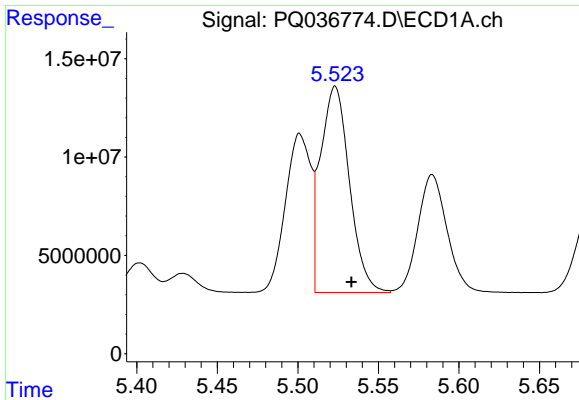
#15 AR-1232-5
 R.T.: 5.218 min
 Delta R.T.: -0.005 min
 Response: 34813884
 Conc: 1378.04 ng/ml



#16 AR-1242-1
 R.T.: 5.501 min
 Delta R.T.: -0.010 min
 Response: 88591918
 Conc: 764.33 ng/ml



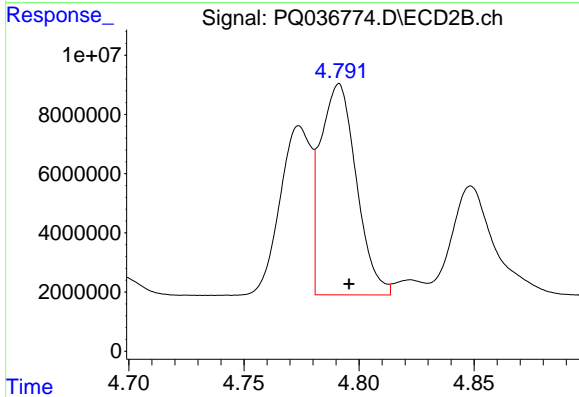
#16 AR-1242-1
 R.T.: 4.774 min
 Delta R.T.: -0.005 min
 Response: 53285296
 Conc: 848.50 ng/ml



#17 AR-1242-2

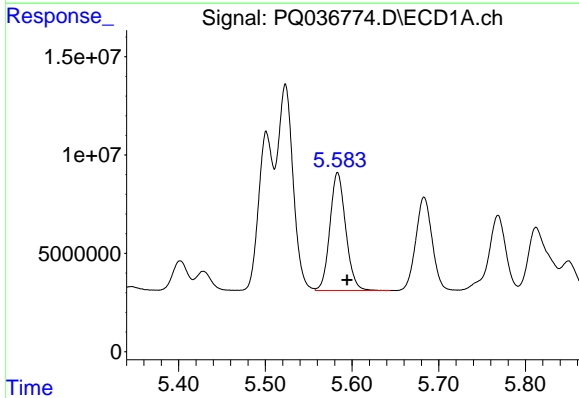
R.T.: 5.523 min
 Delta R.T.: -0.010 min
 Response: 130755366
 Conc: 737.50 ng/ml

Instrument :
 ECD_Q
 ClientSampleId :
 AR1660CCC500



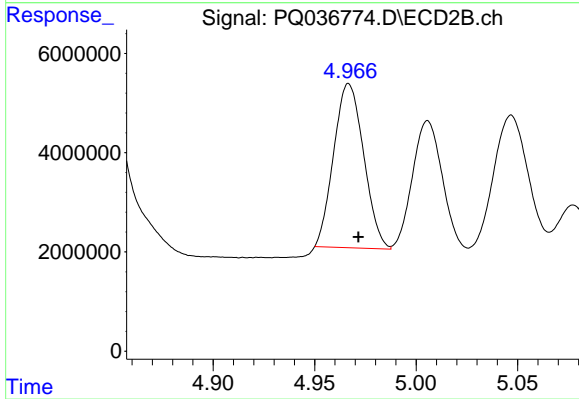
#17 AR-1242-2

R.T.: 4.791 min
 Delta R.T.: -0.004 min
 Response: 77322637
 Conc: 828.48 ng/ml



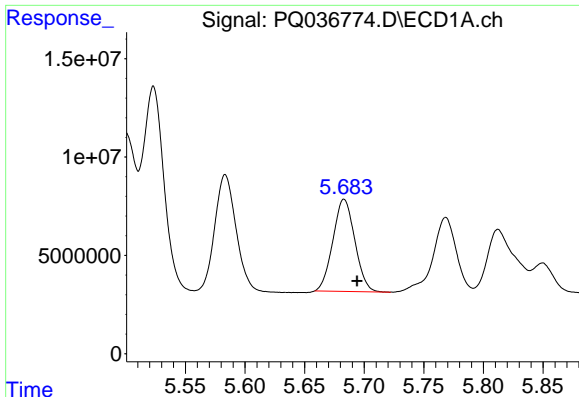
#18 AR-1242-3

R.T.: 5.583 min
 Delta R.T.: -0.011 min
 Response: 75803812
 Conc: 730.88 ng/ml



#18 AR-1242-3

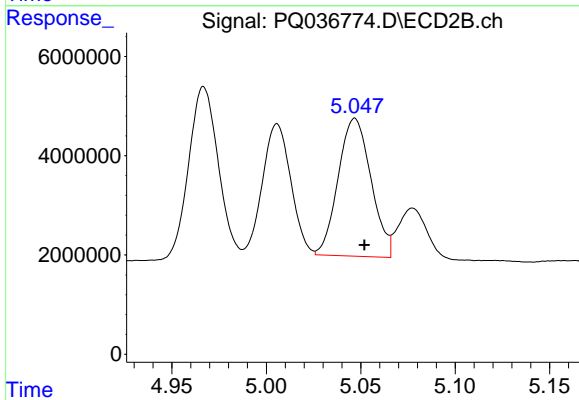
R.T.: 4.967 min
 Delta R.T.: -0.005 min
 Response: 34032048
 Conc: 727.31 ng/ml



#19 AR-1242-4

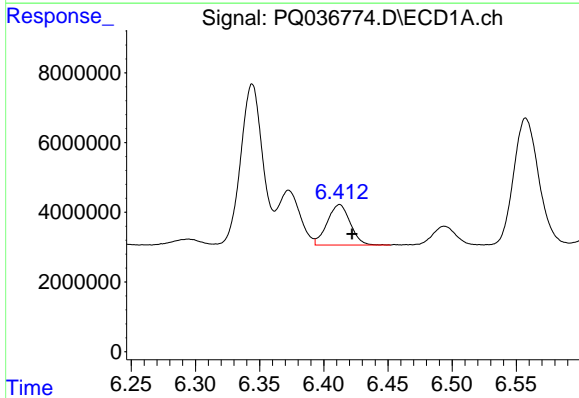
R.T.: 5.683 min
Delta R.T.: -0.011 min
Response: 60012556
Conc: 713.48 ng/ml

Instrument :
ECD_Q
ClientSampleId :
AR1660CCC500



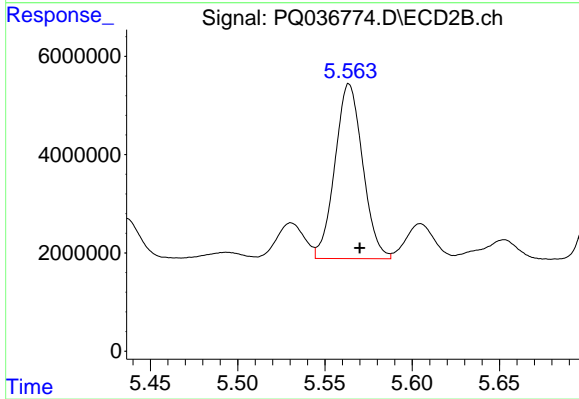
#19 AR-1242-4

R.T.: 5.047 min
Delta R.T.: -0.005 min
Response: 33587038
Conc: 735.09 ng/ml



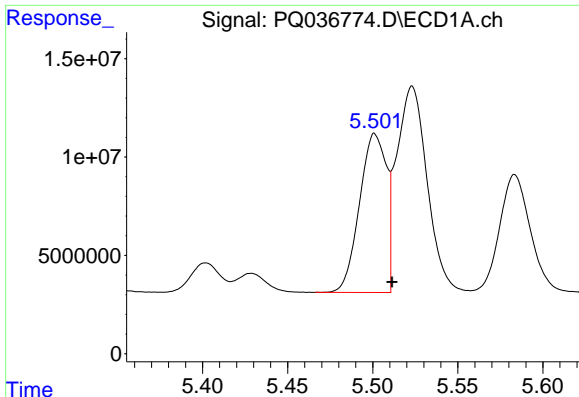
#20 AR-1242-5

R.T.: 6.412 min
Delta R.T.: -0.010 min
Response: 14399967
Conc: 158.70 ng/ml



#20 AR-1242-5

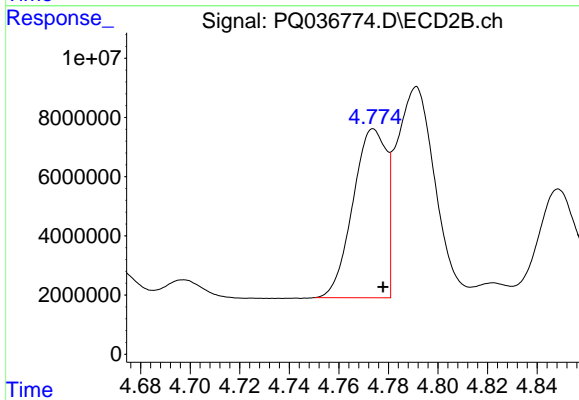
R.T.: 5.564 min
Delta R.T.: -0.006 min
Response: 39384689
Conc: 703.57 ng/ml



#21 AR-1248-1

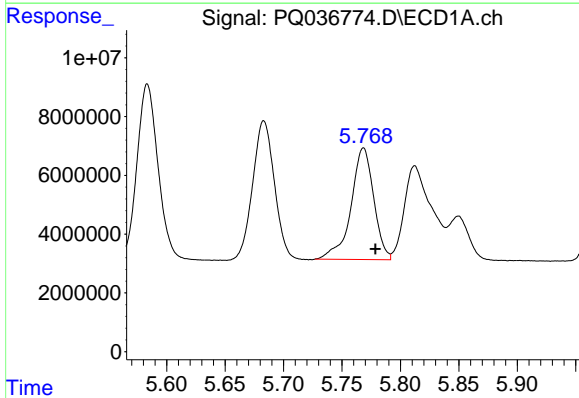
R.T.: 5.501 min
 Delta R.T.: -0.010 min
 Response: 88591918
 Conc: 985.86 ng/ml

Instrument :
 ECD_Q
 ClientSampleId :
 AR1660CCC500



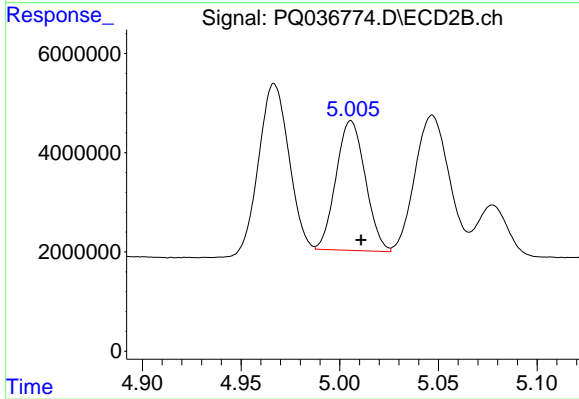
#21 AR-1248-1

R.T.: 4.774 min
 Delta R.T.: -0.004 min
 Response: 53285296
 Conc: 1080.49 ng/ml



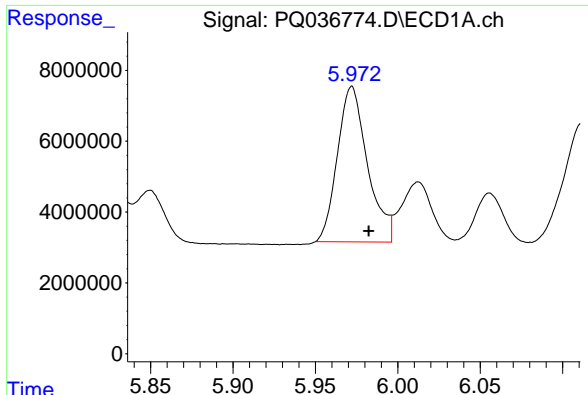
#22 AR-1248-2

R.T.: 5.768 min
 Delta R.T.: -0.010 min
 Response: 51492124
 Conc: 422.04 ng/ml



#22 AR-1248-2

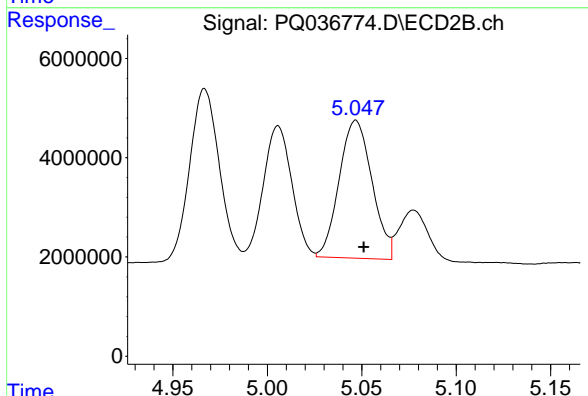
R.T.: 5.006 min
 Delta R.T.: -0.005 min
 Response: 26984967
 Conc: 415.92 ng/ml



#23 AR-1248-3

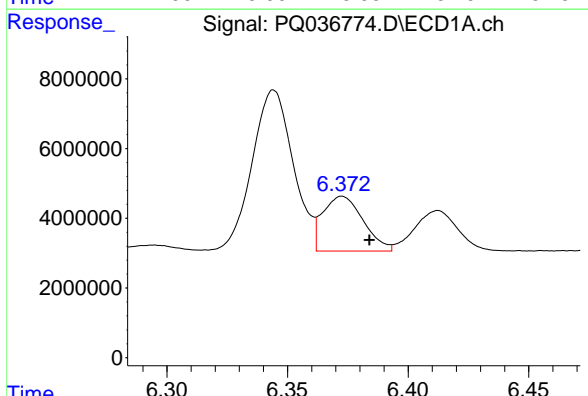
R.T.: 5.972 min
 Delta R.T.: -0.010 min
 Response: 55602042
 Conc: 404.87 ng/ml

Instrument :
 ECD_Q
 ClientSampleId :
 AR1660CCC500



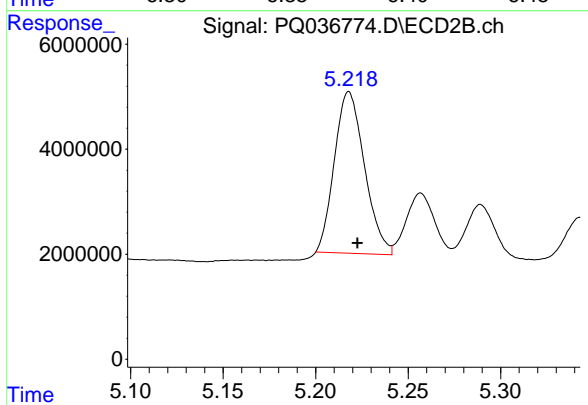
#23 AR-1248-3

R.T.: 5.047 min
 Delta R.T.: -0.004 min
 Response: 33587038
 Conc: 506.84 ng/ml



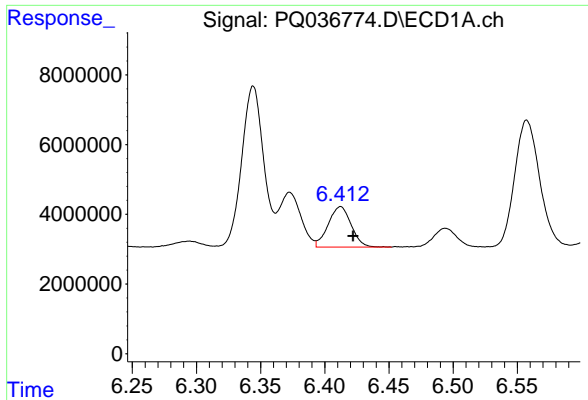
#24 AR-1248-4

R.T.: 6.373 min
 Delta R.T.: -0.011 min
 Response: 18303061
 Conc: 116.62 ng/ml



#24 AR-1248-4

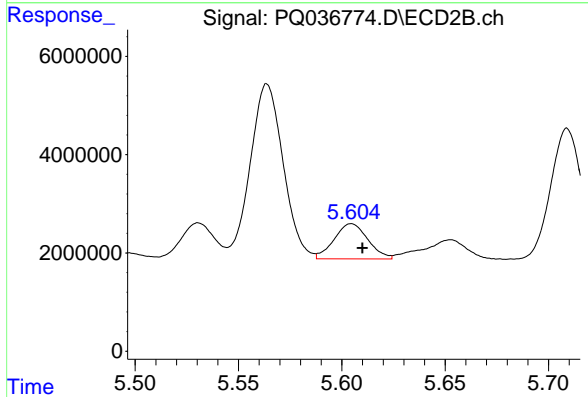
R.T.: 5.218 min
 Delta R.T.: -0.005 min
 Response: 34813884
 Conc: 438.33 ng/ml



#25 AR-1248-5

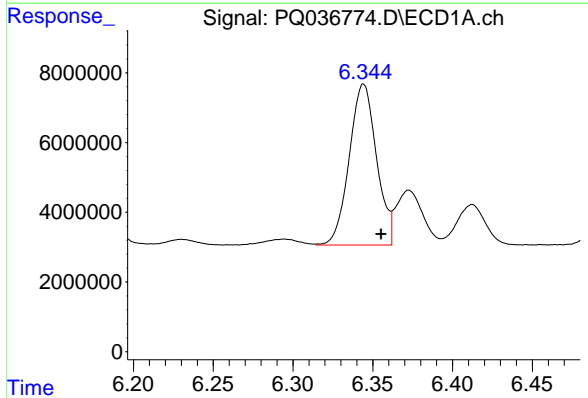
R.T.: 6.412 min
 Delta R.T.: -0.010 min
 Response: 14399967
 Conc: 97.04 ng/ml

Instrument :
 ECD_Q
ClientSampled :
 AR1660CCC500



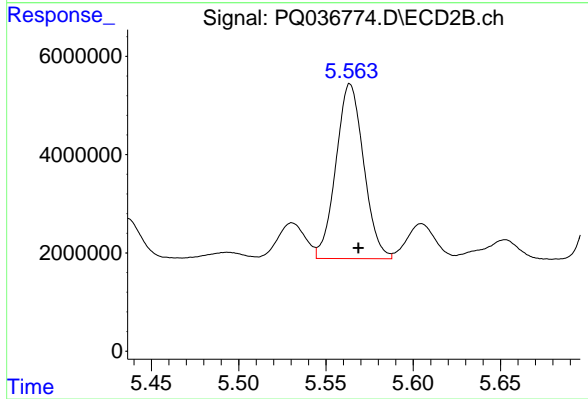
#25 AR-1248-5

R.T.: 5.605 min
 Delta R.T.: -0.005 min
 Response: 8158833
 Conc: 103.26 ng/ml



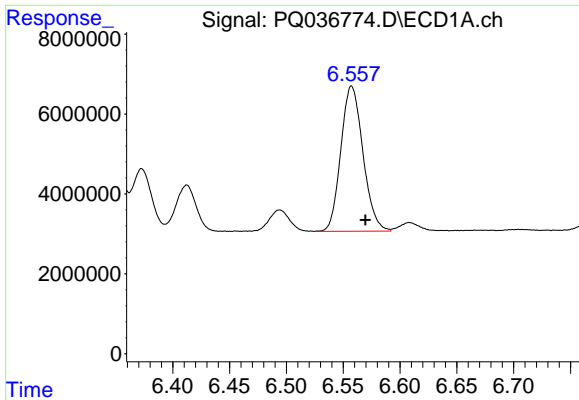
#26 AR-1254-1

R.T.: 6.344 min
 Delta R.T.: -0.011 min
 Response: 54900154
 Conc: 309.60 ng/ml



#26 AR-1254-1

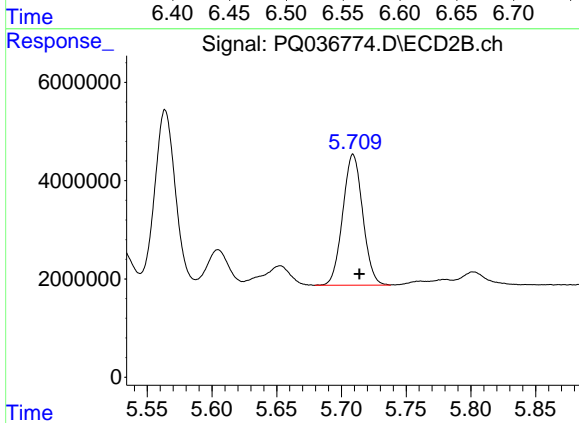
R.T.: 5.564 min
 Delta R.T.: -0.005 min
 Response: 39384689
 Conc: 294.17 ng/ml



#27 AR-1254-2

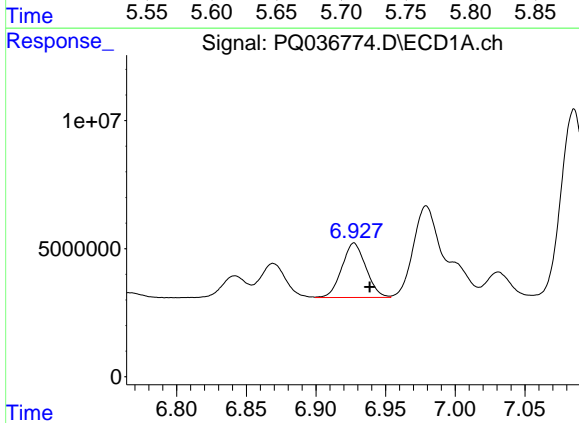
R.T.: 6.557 min
 Delta R.T.: -0.012 min
 Response: 49217748
 Conc: 188.93 ng/ml

Instrument :
 ECD_Q
ClientSampled :
 AR1660CCC500



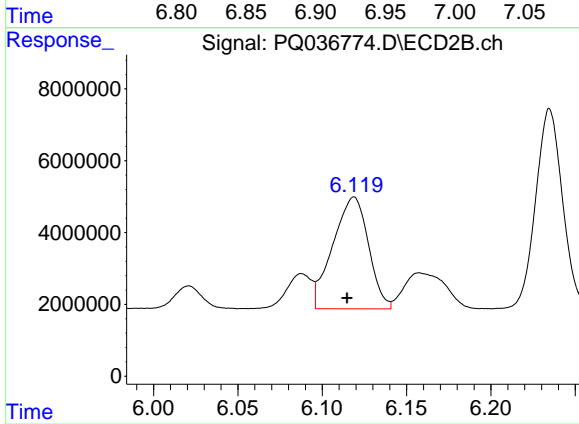
#27 AR-1254-2

R.T.: 5.709 min
 Delta R.T.: -0.005 min
 Response: 28623673
 Conc: 258.66 ng/ml



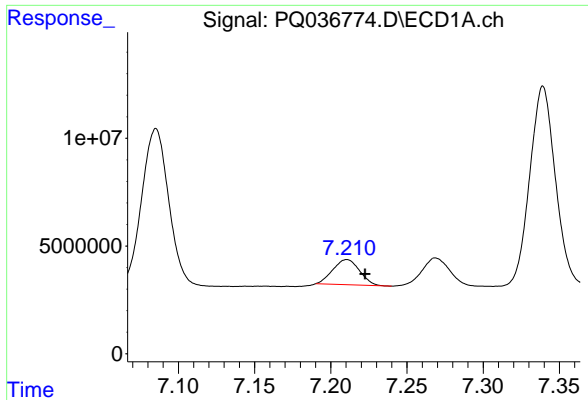
#28 AR-1254-3

R.T.: 6.927 min
 Delta R.T.: -0.011 min
 Response: 25548209
 Conc: 95.42 ng/ml



#28 AR-1254-3

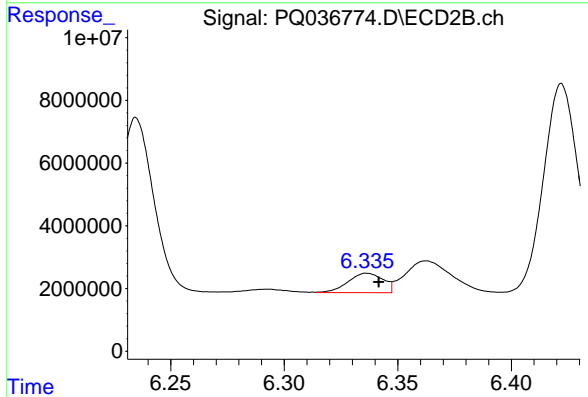
R.T.: 6.119 min
 Delta R.T.: 0.004 min
 Response: 45794853
 Conc: 254.42 ng/ml



#29 AR-1254-4

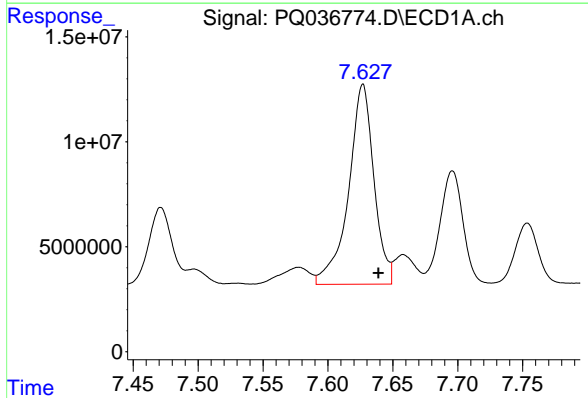
R.T.: 7.211 min
 Delta R.T.: -0.012 min
 Response: 14325226
 Conc: 72.20 ng/ml

Instrument :
 ECD_Q
 ClientSampleId :
 AR1660CCC500



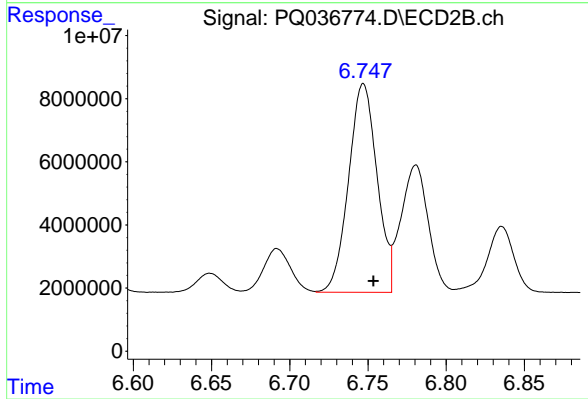
#29 AR-1254-4

R.T.: 6.336 min
 Delta R.T.: -0.005 min
 Response: 6659595
 Conc: 50.47 ng/ml



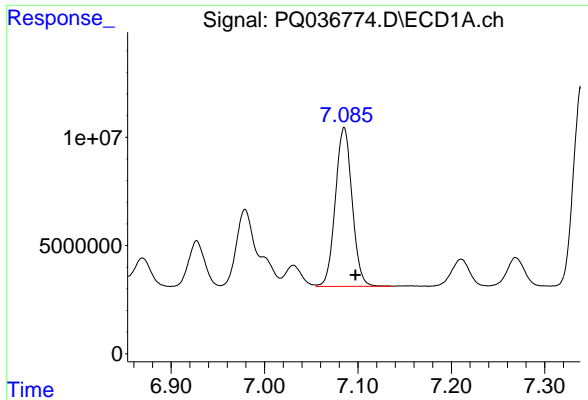
#30 AR-1254-5

R.T.: 7.627 min
 Delta R.T.: -0.012 min
 Response: 129501588
 Conc: 634.32 ng/ml



#30 AR-1254-5

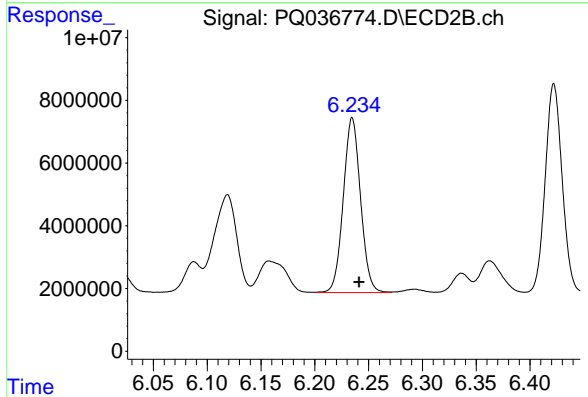
R.T.: 6.747 min
 Delta R.T.: -0.006 min
 Response: 83686767
 Conc: 557.23 ng/ml



#31 AR-1260-1

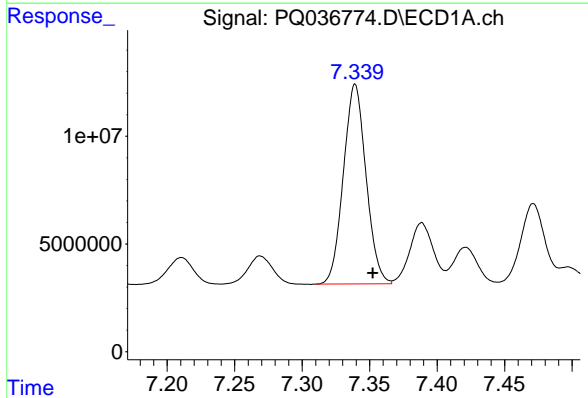
R.T.: 7.085 min
 Delta R.T.: -0.012 min
 Response: 91496134
 Conc: 469.79 ng/ml

Instrument :
 ECD_Q
 ClientSampleId :
 AR1660CCC500



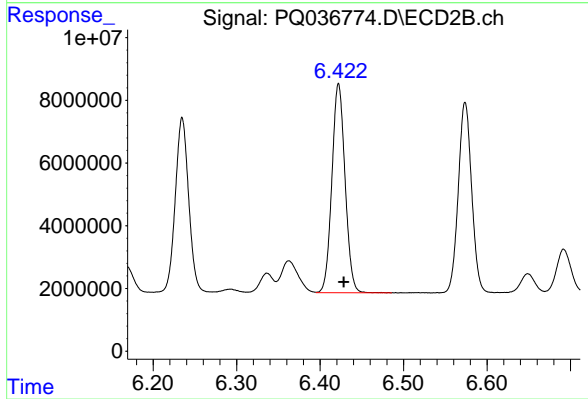
#31 AR-1260-1

R.T.: 6.235 min
 Delta R.T.: -0.006 min
 Response: 62203356
 Conc: 541.88 ng/ml



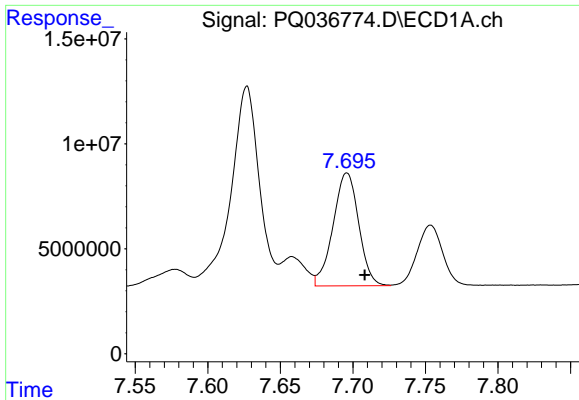
#32 AR-1260-2

R.T.: 7.339 min
 Delta R.T.: -0.013 min
 Response: 108271220
 Conc: 468.83 ng/ml



#32 AR-1260-2

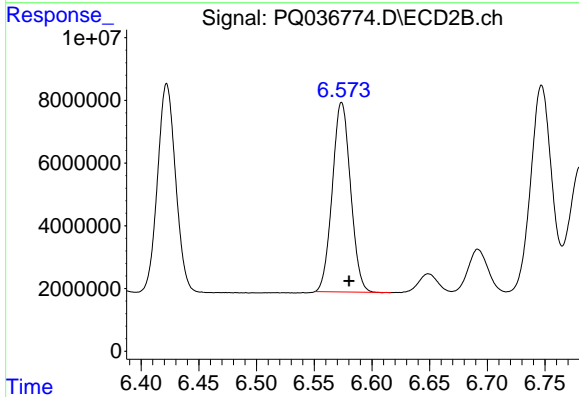
R.T.: 6.422 min
 Delta R.T.: -0.006 min
 Response: 73113462
 Conc: 520.06 ng/ml



#33 AR-1260-3

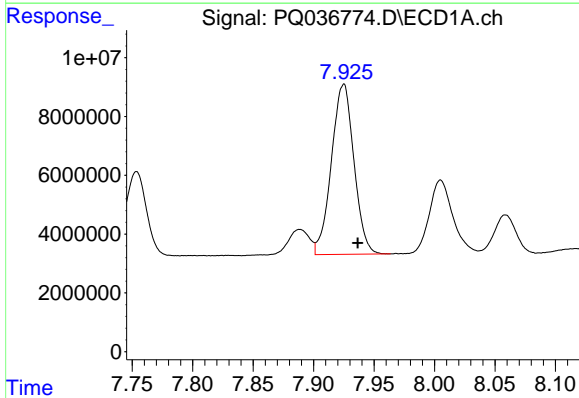
R.T.: 7.696 min
 Delta R.T.: -0.012 min
 Response: 66192109
 Conc: 459.00 ng/ml

Instrument :
 ECD_Q
 ClientSampleId :
 AR1660CCC500



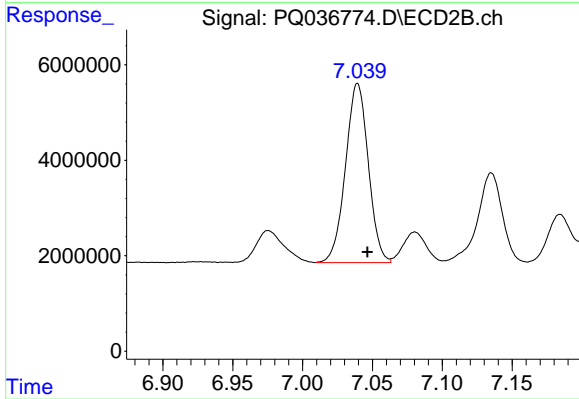
#33 AR-1260-3

R.T.: 6.574 min
 Delta R.T.: -0.007 min
 Response: 66569541
 Conc: 519.38 ng/ml



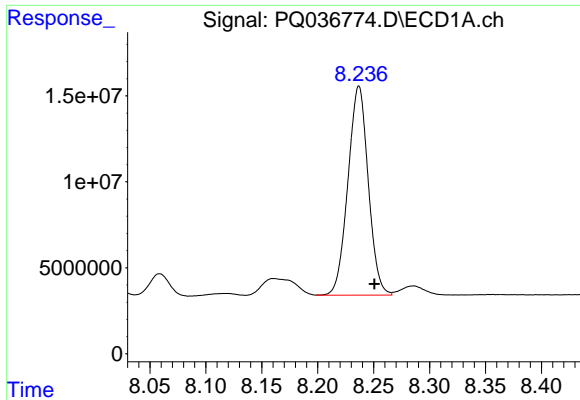
#34 AR-1260-4

R.T.: 7.925 min
 Delta R.T.: -0.012 min
 Response: 75144700
 Conc: 441.35 ng/ml



#34 AR-1260-4

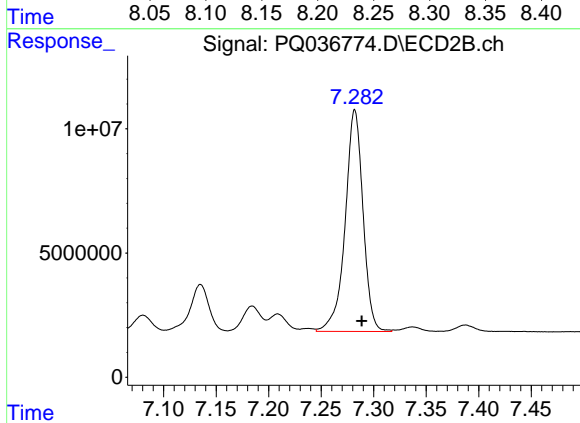
R.T.: 7.039 min
 Delta R.T.: -0.007 min
 Response: 42687624
 Conc: 490.27 ng/ml



#35 AR-1260-5

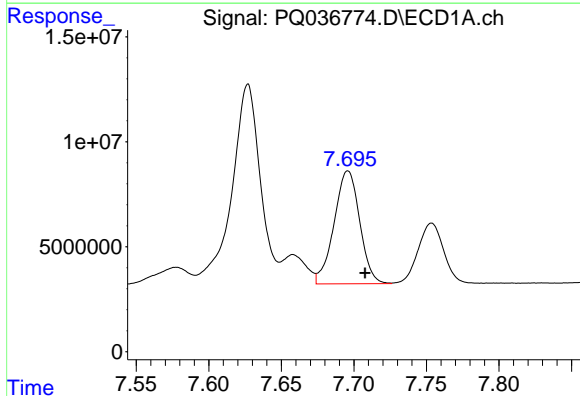
R.T.: 8.237 min
 Delta R.T.: -0.014 min
 Response: 153878713
 Conc: 457.59 ng/ml

Instrument :
 ECD_Q
 ClientSampled :
 AR1660CCC500



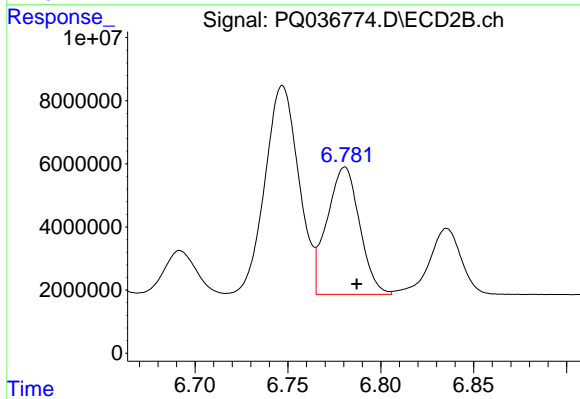
#35 AR-1260-5

R.T.: 7.282 min
 Delta R.T.: -0.007 min
 Response: 105574088
 Conc: 483.55 ng/ml



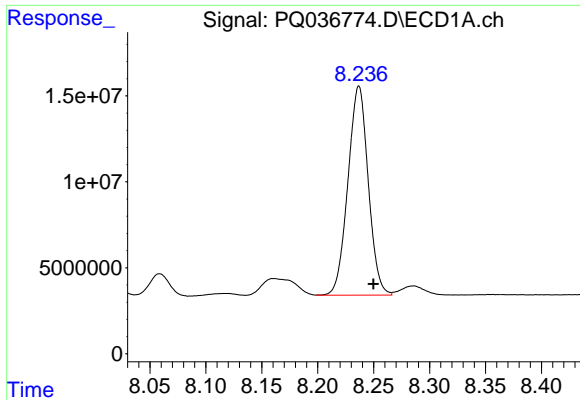
#36 AR-1262-1

R.T.: 7.696 min
 Delta R.T.: -0.012 min
 Response: 66192109
 Conc: 238.97 ng/ml



#36 AR-1262-1

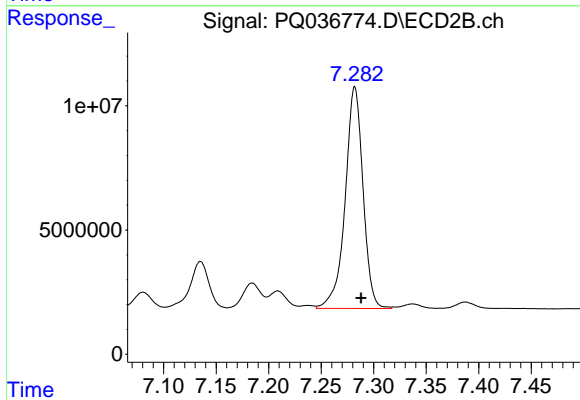
R.T.: 6.781 min
 Delta R.T.: -0.006 min
 Response: 49209940
 Conc: 293.22 ng/ml



#37 AR-1262-2

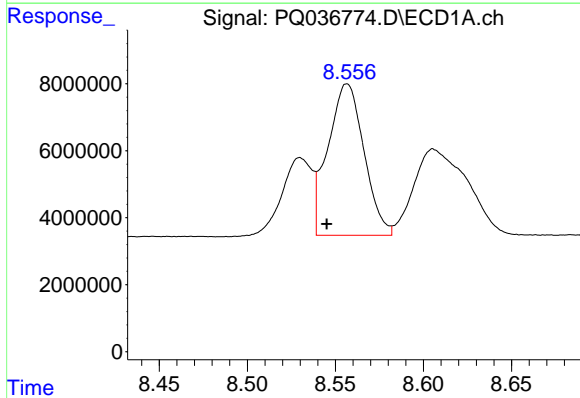
R.T.: 8.237 min
 Delta R.T.: -0.013 min
 Response: 153878713
 Conc: 313.81 ng/ml

Instrument :
 ECD_Q
 ClientSampleId :
 AR1660CCC500



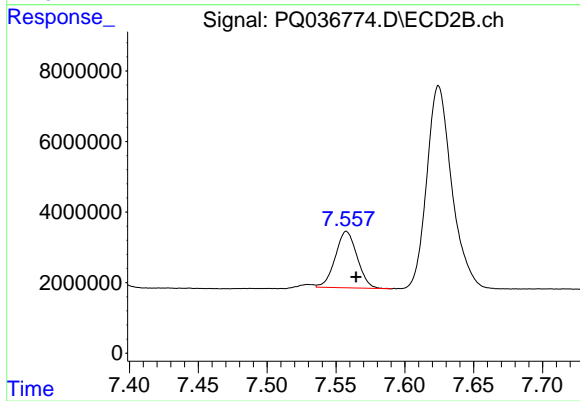
#37 AR-1262-2

R.T.: 7.282 min
 Delta R.T.: -0.006 min
 Response: 105574088
 Conc: 348.65 ng/ml



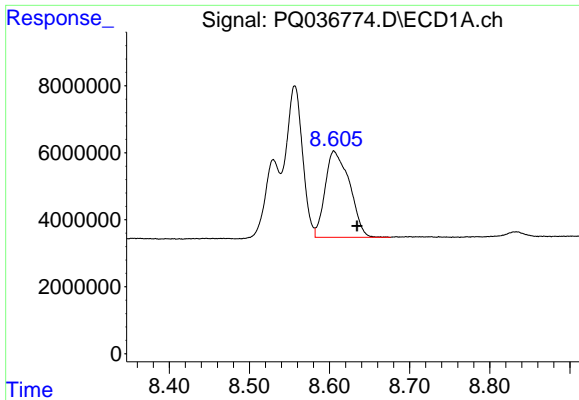
#38 AR-1262-3

R.T.: 8.557 min
 Delta R.T.: 0.012 min
 Response: 64542508
 Conc: 310.33 ng/ml



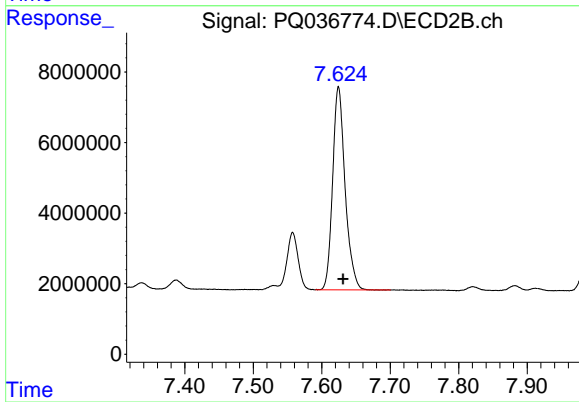
#38 AR-1262-3

R.T.: 7.558 min
 Delta R.T.: -0.007 min
 Response: 17676216
 Conc: 157.38 ng/ml

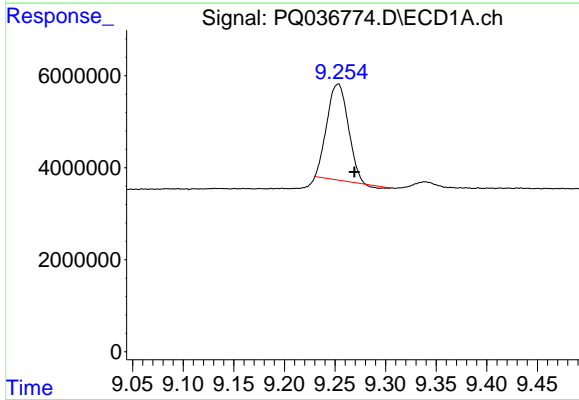


#39 AR-1262-4
R.T.: 8.606 min
Delta R.T.: -0.029 min
Response: 54616322
Conc: 225.15 ng/ml

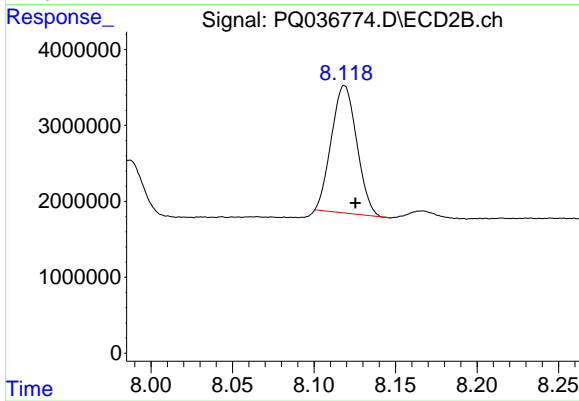
Instrument :
ECD_Q
ClientSampleId :
AR1660CCC500



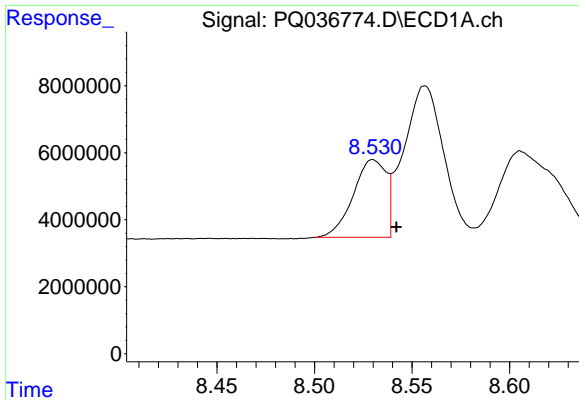
#39 AR-1262-4
R.T.: 7.625 min
Delta R.T.: -0.006 min
Response: 72854884
Conc: 337.73 ng/ml



#40 AR-1262-5
R.T.: 9.253 min
Delta R.T.: -0.016 min
Response: 30133198
Conc: 185.19 ng/ml



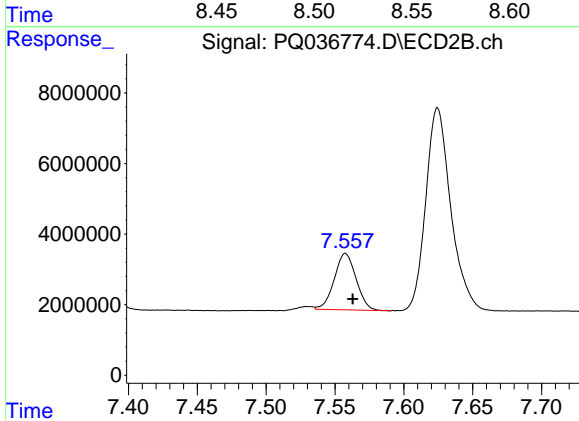
#40 AR-1262-5
R.T.: 8.119 min
Delta R.T.: -0.007 min
Response: 18194231
Conc: 193.46 ng/ml



#41 AR-1268-1

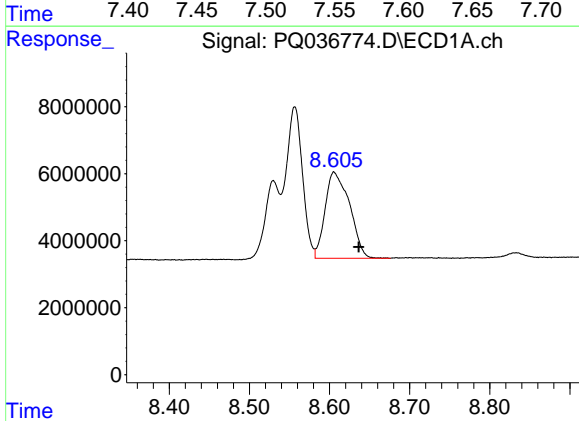
R.T.: 8.530 min
 Delta R.T.: -0.012 min
 Response: 27394593
 Conc: 43.43 ng/ml

Instrument :
 ECD_Q
ClientSampleId :
 AR1660CCC500



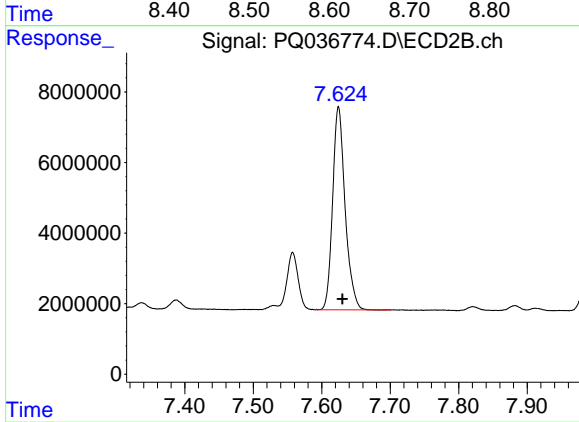
#41 AR-1268-1

R.T.: 7.558 min
 Delta R.T.: -0.005 min
 Response: 17676216
 Conc: 48.63 ng/ml



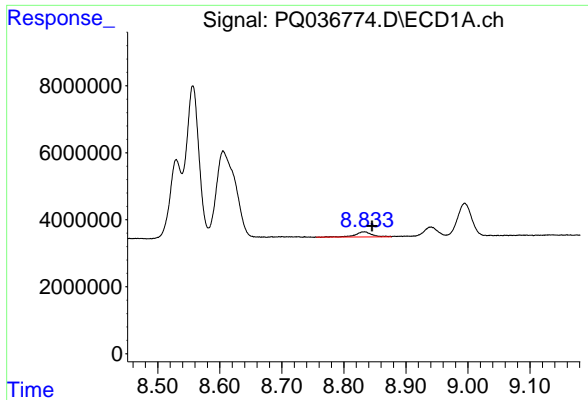
#42 AR-1268-2

R.T.: 8.606 min
 Delta R.T.: -0.031 min
 Response: 54616322
 Conc: 92.80 ng/ml



#42 AR-1268-2

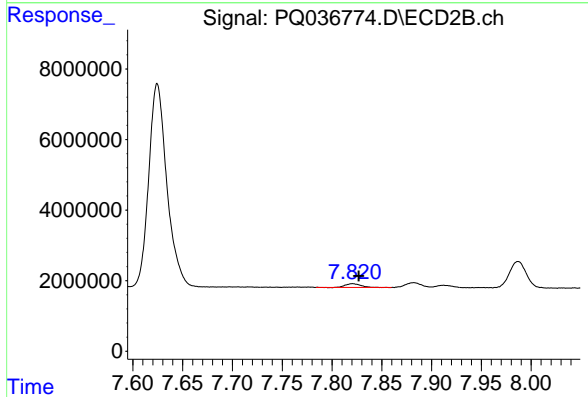
R.T.: 7.625 min
 Delta R.T.: -0.006 min
 Response: 72854884
 Conc: 219.88 ng/ml



#43 AR-1268-3

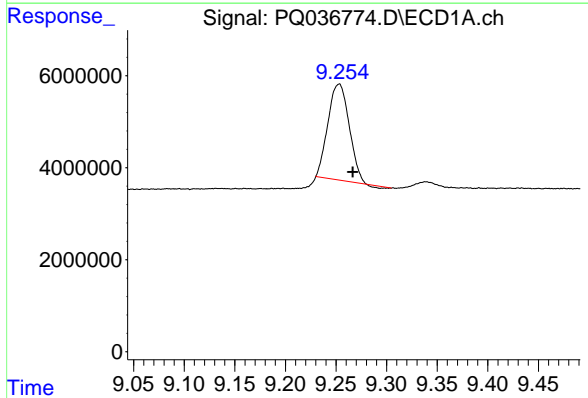
R.T.: 8.833 min
 Delta R.T.: -0.012 min
 Response: 2815439
 Conc: 5.56 ng/ml

Instrument :
 ECD_Q
 ClientSampleId :
 AR1660CCC500



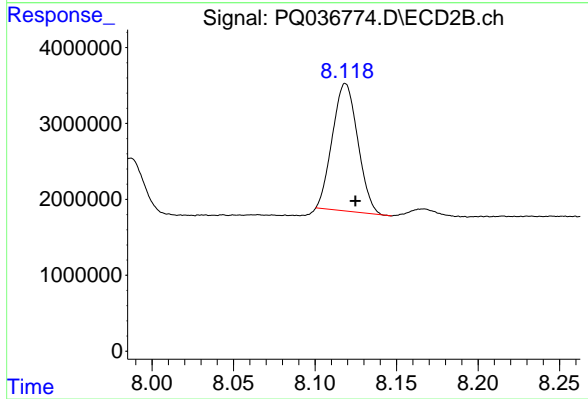
#43 AR-1268-3

R.T.: 7.821 min
 Delta R.T.: -0.006 min
 Response: 1062350
 Conc: 3.90 ng/ml



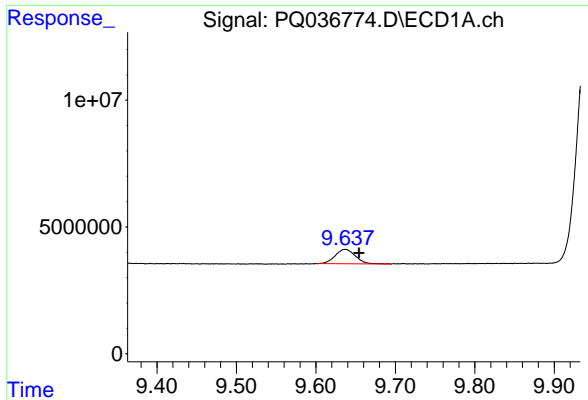
#44 AR-1268-4

R.T.: 9.253 min
 Delta R.T.: -0.013 min
 Response: 30133198
 Conc: 154.72 ng/ml



#44 AR-1268-4

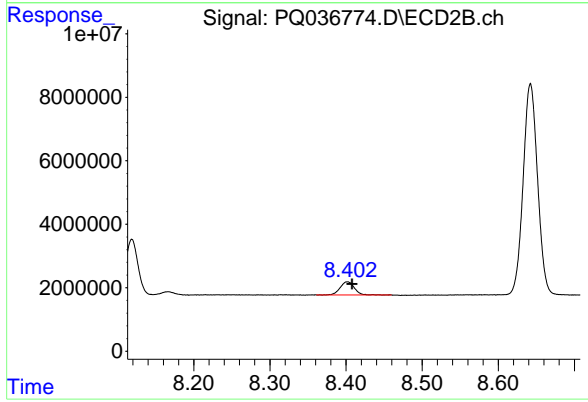
R.T.: 8.119 min
 Delta R.T.: -0.006 min
 Response: 18194231
 Conc: 162.97 ng/ml



#45 AR-1268-5

R.T.: 9.637 min
Delta R.T.: -0.017 min
Response: 9983849
Conc: 6.15 ng/ml

Instrument :
ECD_Q
ClientSampleId :
AR1660CCC500



#45 AR-1268-5

R.T.: 8.402 min
Delta R.T.: -0.006 min
Response: 5326854
Conc: 6.15 ng/ml