

Data Path : Z:\pestpcbsrv\HPCHEM1\ECD_Q\Data\PQ012619\
 Data File : PQ036773.D
 Signal(s) : Signal #1: ECD1A.ch Signal #2: ECD2B.ch
 Acq On : 25 Jan 2019 19:29
 Operator : SM\SJ
 Sample : I.BLK
 Misc :
 ALS Vial : 2 Sample Multiplier: 1

Instrument :
 ECD_Q
 ClientSampled :
 I.BLK

Manual Integrations
 APPROVED

Sohil
 1/28/2019 9:58:30 AM

Integration File signal 1: autoint1.e
 Integration File signal 2: autoint2.e
 Quant Time: Jan 27 23:54:14 2019
 Quant Method : Z:\pestpcbsrv\HPCHEM1\ECD_Q\Method\PQ012419.M
 Quant Title : GC EXTRACTABLES
 QLast Update : Thu Jan 24 06:01:26 2019
 Response via : Initial Calibration
 Integrator: ChemStation

Volume Inj. : 2 µl
 Signal #1 Phase : ZB-MR1 Signal #2 Phase: ZB-MR2
 Signal #1 Info : 30Mx0.32mmx 0.50µ Signal #2 Info : 30M x 0.32mm x 0.25µm

Compound	RT#1	RT#2	Resp#1	Resp#2	ng/ml	ng/ml
----------	------	------	--------	--------	-------	-------

 System Monitoring Compounds

1) SA Tetrachlo...	4.345	3.704	141.4E6	79867464	30.711	33.334
2) SA Decachlor...	9.945	8.642	78087612	38128573	21.419	20.268m

Target Compounds

(f)=RT Delta > 1/2 Window (#)=Amounts differ by > 25% (m)=manual int.

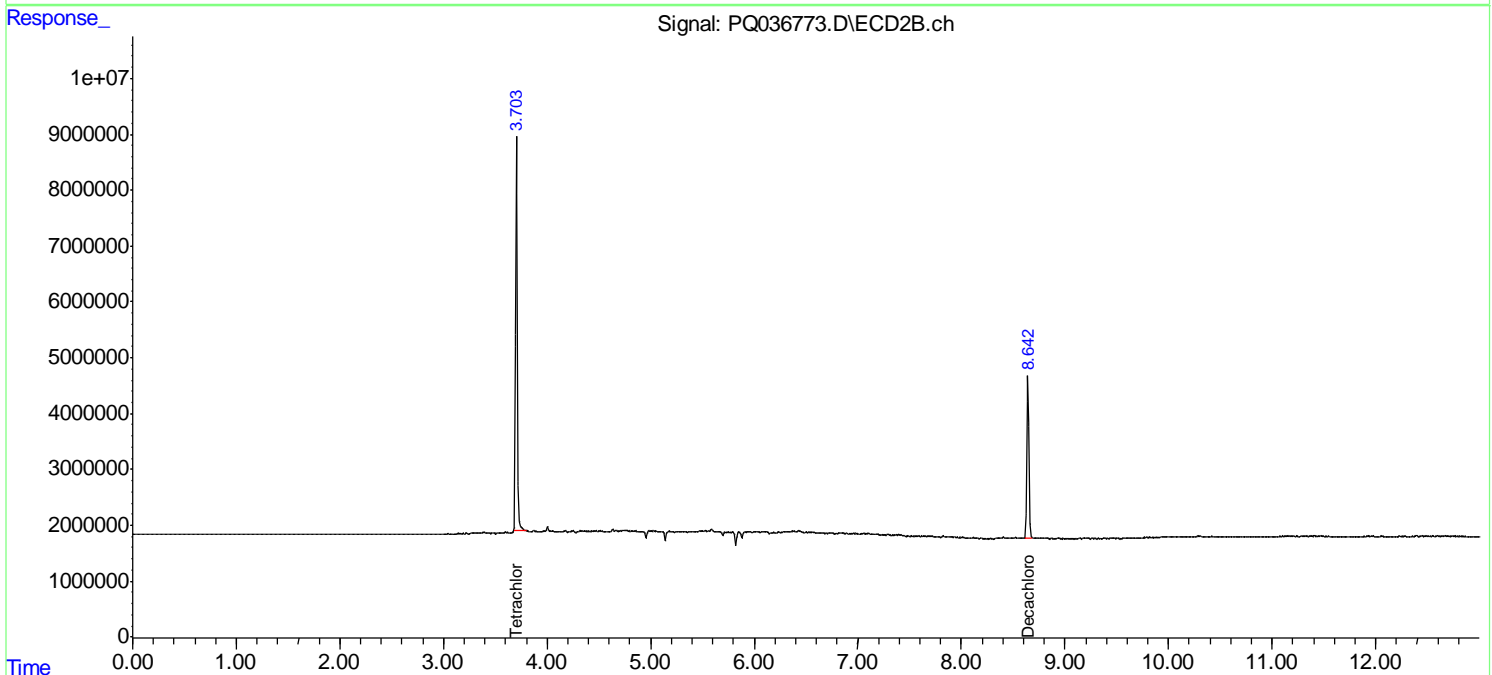
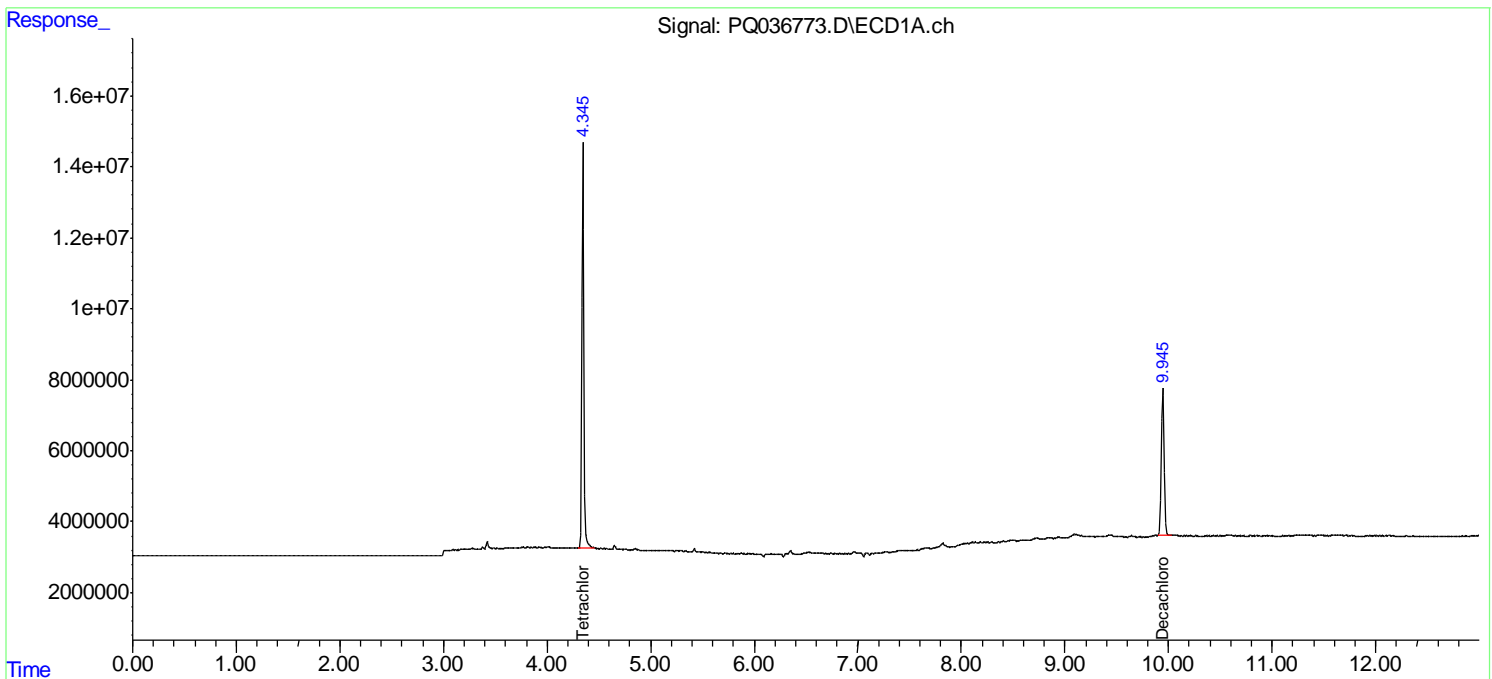
Data Path : Z:\pestpcbsrv\HPCHEM1\ECD_Q\Data\PQ012619\
 Data File : PQ036773.D
 Signal(s) : Signal #1: ECD1A.ch Signal #2: ECD2B.ch
 Acq On : 25 Jan 2019 19:29
 Operator : SM\SJ
 Sample : I.BLK
 Misc :
 ALS Vial : 2 Sample Multiplier: 1

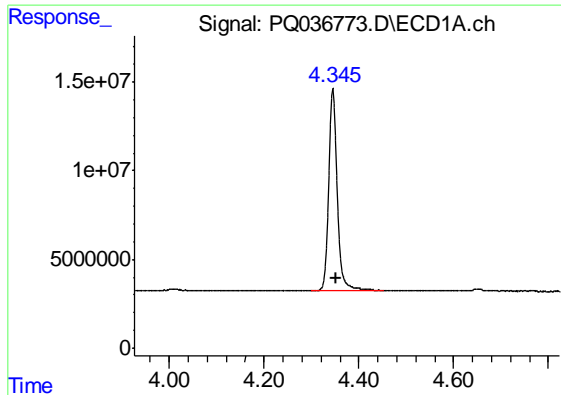
Instrument :
 ECD_Q
ClientSampled :
 I.BLK

Manual Integrations
APPROVED
 Sohil
 1/28/2019 9:58:30 AM

Integration File signal 1: autoint1.e
 Integration File signal 2: autoint2.e
 Quant Time: Jan 27 23:54:14 2019
 Quant Method : Z:\pestpcbsrv\HPCHEM1\ECD_Q\Method\PQ012419.M
 Quant Title : GC EXTRACTABLES
 QLast Update : Thu Jan 24 06:01:26 2019
 Response via : Initial Calibration
 Integrator: ChemStation

Volume Inj. : 2 µl
 Signal #1 Phase : ZB-MR1 Signal #2 Phase: ZB-MR2
 Signal #1 Info : 30Mx0.32mmx 0.50µ Signal #2 Info : 30M x 0.32mm x 0.25µm

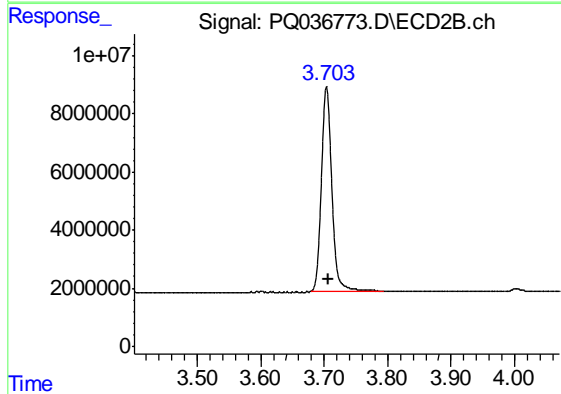




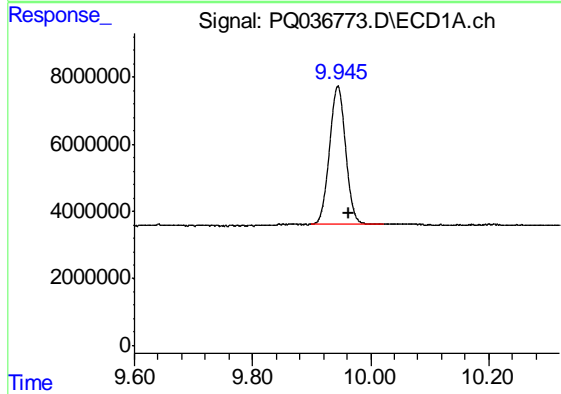
#1 Tetrachloro-m-xylene
 R.T.: 4.345 min
 Delta R.T.: -0.008 min
 Response: 141357624
 Conc: 30.71 ng/ml

Instrument :
 ECD_Q
 ClientSampled :
 I.BLK

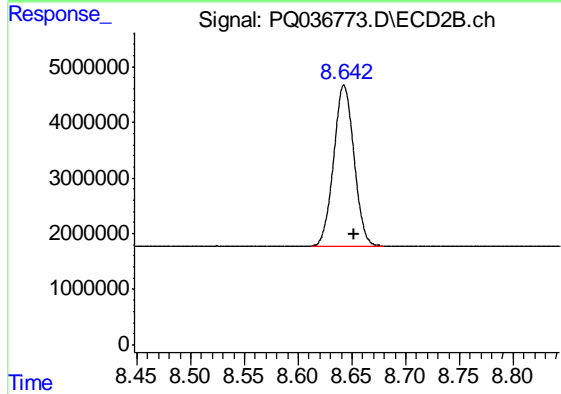
Manual Integrations
 APPROVED
 Sohil
 1/28/2019 9:58:30 AM



#1 Tetrachloro-m-xylene
 R.T.: 3.704 min
 Delta R.T.: -0.002 min
 Response: 79867464
 Conc: 33.33 ng/ml



#2 Decachlorobiphenyl
 R.T.: 9.945 min
 Delta R.T.: -0.019 min
 Response: 78087612
 Conc: 21.42 ng/ml



#2 Decachlorobiphenyl
 R.T.: 8.642 min
 Delta R.T.: -0.010 min
 Response: 38128573
 Conc: 20.27 ng/ml m