

Data Path : Z:\pestpcbsrv\HPCHEM1\ECD_Q\Data\PQ012619\
 Data File : PQ036783.D
 Signal(s) : Signal #1: ECD1A.ch Signal #2: ECD2B.ch
 Acq On : 25 Jan 2019 22:04
 Operator : SM\SJ
 Sample : K1238-11
 Misc :
 ALS Vial : 47 Sample Multiplier: 1

Instrument :
 ECD_Q
ClientSampleId :
 S2

Manual Integrations
APPROVED
 Sohil
 1/28/2019 9:58:48 AM

Integration File signal 1: autoint1.e
 Integration File signal 2: autoint2.e
 Quant Time: Jan 27 23:57:25 2019
 Quant Method : Z:\pestpcbsrv\HPCHEM1\ECD_Q\Method\PQ012419.M
 Quant Title : GC EXTRACTABLES
 QLast Update : Thu Jan 24 06:01:26 2019
 Response via : Initial Calibration
 Integrator: ChemStation

Volume Inj. : 2 µl
 Signal #1 Phase : ZB-MR1 Signal #2 Phase: ZB-MR2
 Signal #1 Info : 30Mx0.32mmx 0.50µ Signal #2 Info : 30M x 0.32mm x 0.25µm

Compound	RT#1	RT#2	Resp#1	Resp#2	ng/ml	ng/ml

System Monitoring Compounds						
1) SA Tetrachlo...	4.344	3.703	90020665	50529076	19.558	21.089
2) SA Decachlor...	9.942	8.642	39153694	19676729	10.740	10.459m

Target Compounds

(f)=RT Delta > 1/2 Window (#)=Amounts differ by > 25% (m)=manual int.

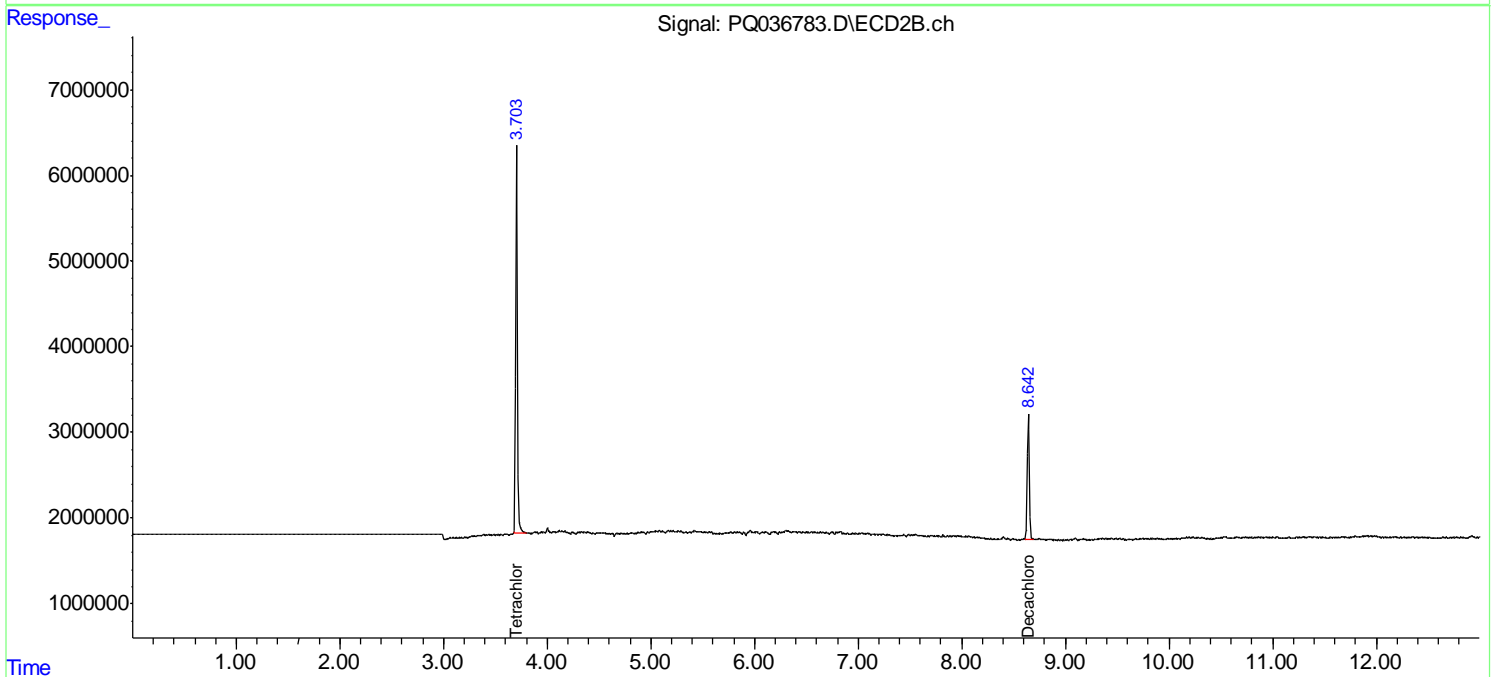
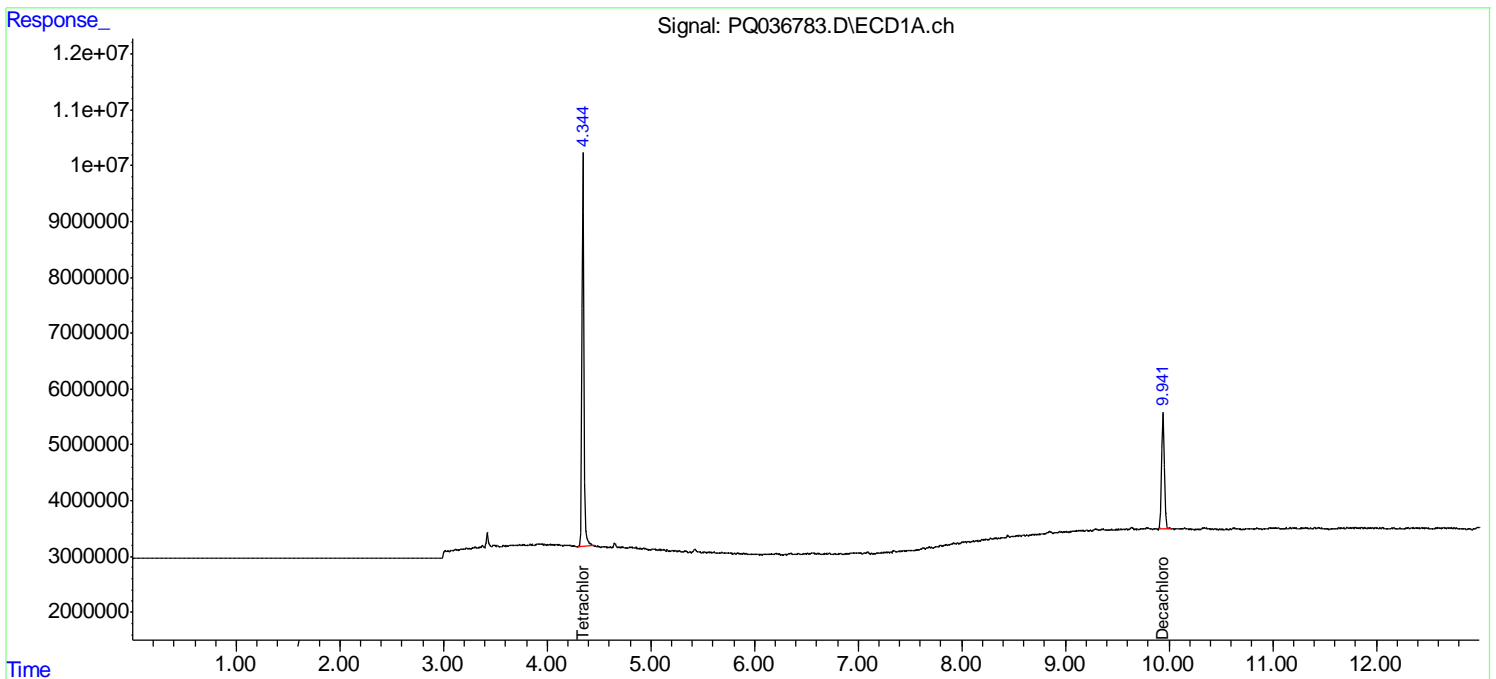
Data Path : Z:\pestpcbsrv\HPCHEM1\ECD_Q\Data\PQ012619\
Data File : PQ036783.D
Signal(s) : Signal #1: ECD1A.ch Signal #2: ECD2B.ch
Acq On : 25 Jan 2019 22:04
Operator : SM\SJ
Sample : K1238-11
Misc :
ALS Vial : 47 Sample Multiplier: 1

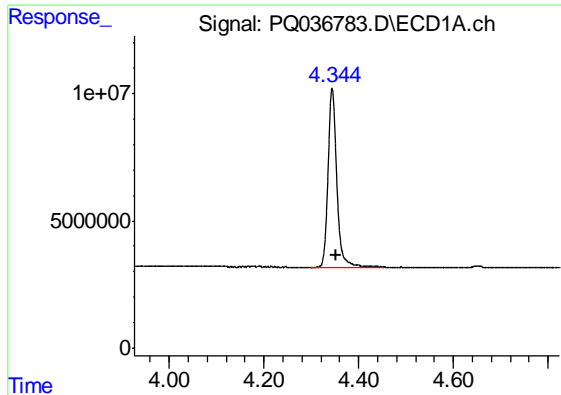
Instrument :
ECD_Q
ClientSampled :
S2

Manual Integrations
APPROVED
Sohil
1/28/2019 9:58:48 AM

Integration File signal 1: autoint1.e
Integration File signal 2: autoint2.e
Quant Time: Jan 27 23:57:25 2019
Quant Method : Z:\pestpcbsrv\HPCHEM1\ECD_Q\Method\PQ012419.M
Quant Title : GC EXTRACTABLES
QLast Update : Thu Jan 24 06:01:26 2019
Response via : Initial Calibration
Integrator: ChemStation

Volume Inj. : 2 µl
Signal #1 Phase : ZB-MR1 Signal #2 Phase: ZB-MR2
Signal #1 Info : 30Mx0.32mmx 0.50µ Signal #2 Info : 30M x 0.32mm x 0.25µm

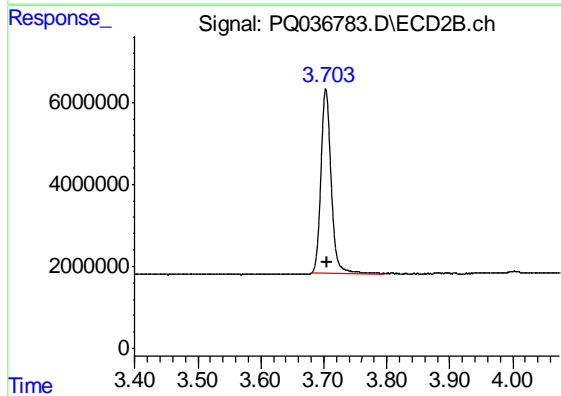




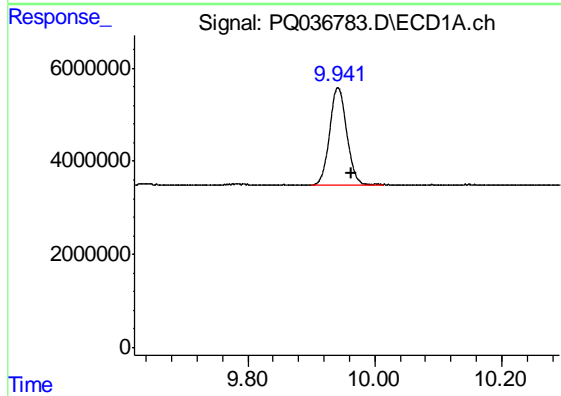
#1 Tetrachloro-m-xylene
 R.T.: 4.344 min
 Delta R.T.: -0.009 min
 Response: 90020665
 Conc: 19.56 ng/ml

Instrument :
 ECD_Q
 ClientSampled :
 S2

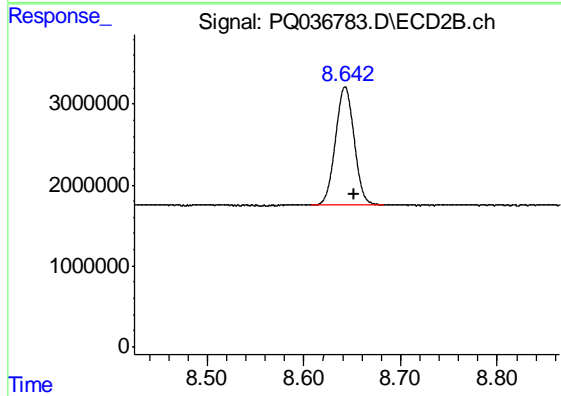
Manual Integrations
 APPROVED
 Sohil
 1/28/2019 9:58:48 AM



#1 Tetrachloro-m-xylene
 R.T.: 3.703 min
 Delta R.T.: -0.003 min
 Response: 50529076
 Conc: 21.09 ng/ml



#2 Decachlorobiphenyl
 R.T.: 9.942 min
 Delta R.T.: -0.022 min
 Response: 39153694
 Conc: 10.74 ng/ml



#2 Decachlorobiphenyl
 R.T.: 8.642 min
 Delta R.T.: -0.010 min
 Response: 19676729
 Conc: 10.46 ng/ml m