

Data Path : Z:\pestpcbsrv\HPCHEM1\ECD\_Q\Data\PQ013120\  
 Data File : PQ046323.D  
 Signal(s) : Signal #1: ECD1A.ch Signal #2: ECD2B.ch  
 Acq On : 31 Jan 2020 21:22  
 Operator : AJ\MA  
 Sample : L1331-03  
 Misc :  
 ALS Vial : 39 Sample Multiplier: 1

Instrument :  
 ECD\_Q  
 ClientSampleId :  
 C-3\_013020

Integration File signal 1: autoint1.e  
 Integration File signal 2: autoint2.e  
 Quant Time: Jan 31 23:05:42 2020  
 Quant Method : Z:\pestpcbsrv\HPCHEM1\ECD\_Q\Method\PQ013020.M  
 Quant Title : GC EXTRACTABLES  
 QLast Update : Fri Jan 31 06:56:17 2020  
 Response via : Initial Calibration  
 Integrator: ChemStation

Volume Inj. : 2 µl  
 Signal #1 Phase : ZB-MR1 Signal #2 Phase: ZB-MR2  
 Signal #1 Info : 30Mx0.32mmx 0.50µ Signal #2 Info : 30M x 0.32mm x 0.25µm

Compound	RT#1	RT#2	Resp#1	Resp#2	ng/ml	ng/ml
-----						
System Monitoring Compounds						
1) SA Tetrachlo...	5.196	4.345	210.6E6	99700829	35.015	33.857
2) SA Decachlor...	11.331	9.768	156.6E6	145.2E6	30.442	28.479

Target Compounds

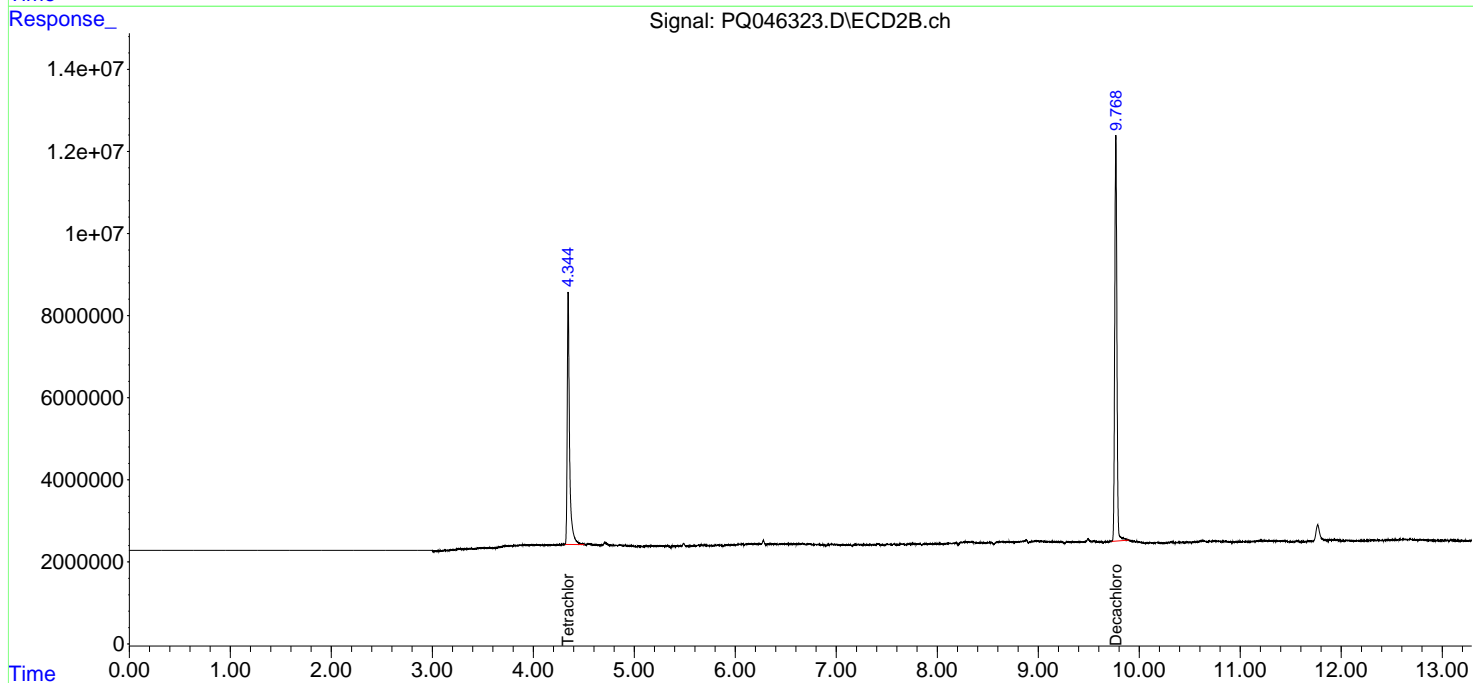
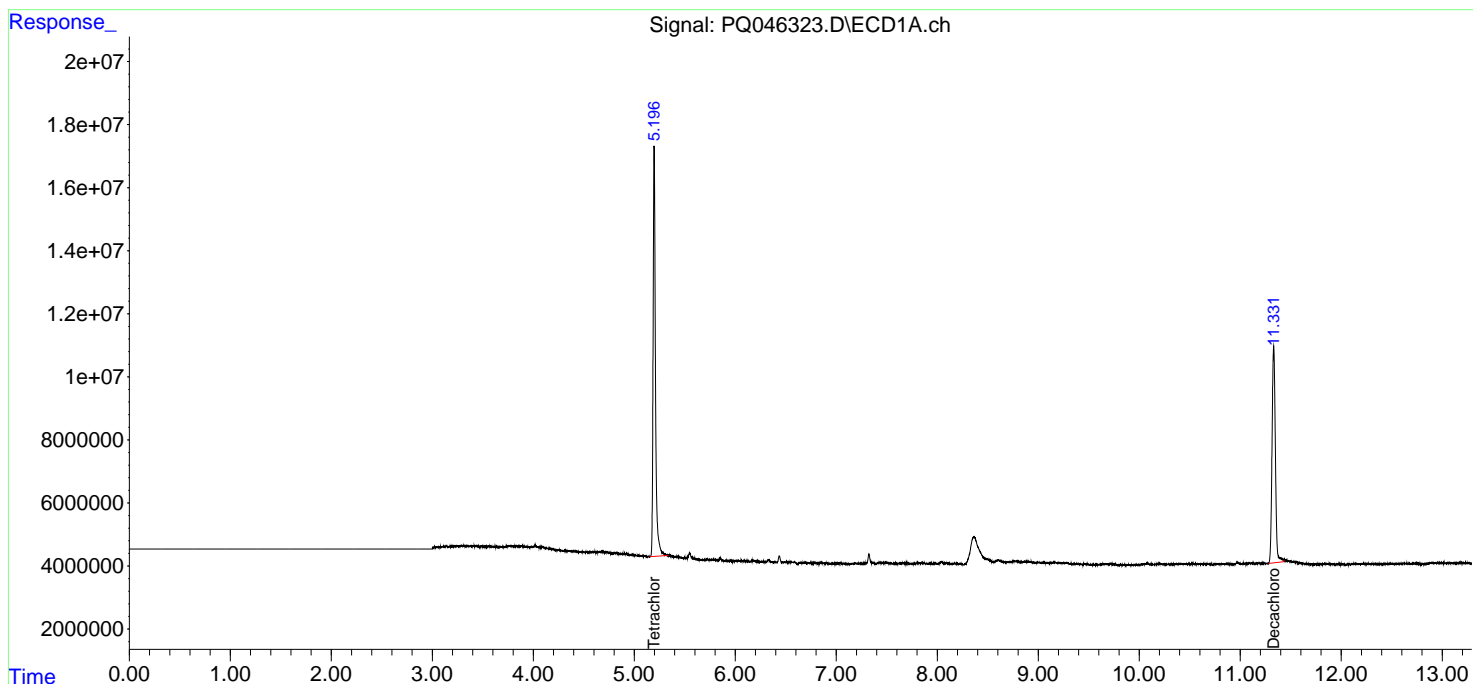
(f)=RT Delta > 1/2 Window (#)=Amounts differ by > 25% (m)=manual int.

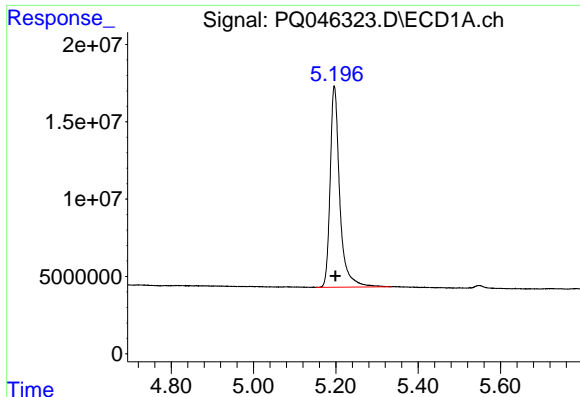
Data Path : Z:\pestpcbsrv\HPCHEM1\ECD\_Q\Data\PQ013120\  
 Data File : PQ046323.D  
 Signal(s) : Signal #1: ECD1A.ch Signal #2: ECD2B.ch  
 Acq On : 31 Jan 2020 21:22  
 Operator : AJ\MA  
 Sample : L1331-03  
 Misc :  
 ALS Vial : 39 Sample Multiplier: 1

Instrument :  
 ECD\_Q  
 ClientSampled :  
 C-3\_013020

Integration File signal 1: autoint1.e  
 Integration File signal 2: autoint2.e  
 Quant Time: Jan 31 23:05:42 2020  
 Quant Method : Z:\pestpcbsrv\HPCHEM1\ECD\_Q\Method\PQ013020.M  
 Quant Title : GC EXTRACTABLES  
 QLast Update : Fri Jan 31 06:56:17 2020  
 Response via : Initial Calibration  
 Integrator: ChemStation

Volume Inj. : 2 µl  
 Signal #1 Phase : ZB-MR1 Signal #2 Phase: ZB-MR2  
 Signal #1 Info : 30Mx0.32mmx 0.50µ Signal #2 Info : 30M x 0.32mm x 0.25µm

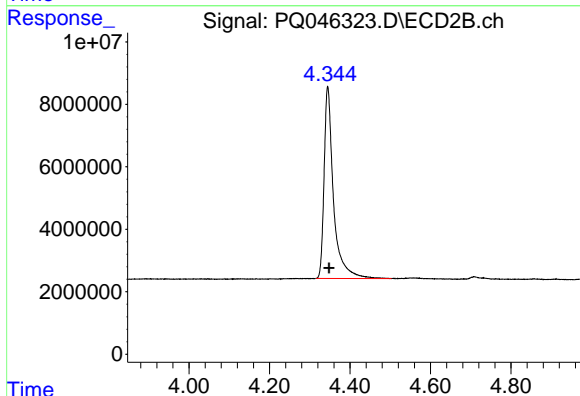




#1 Tetrachloro-m-xylene

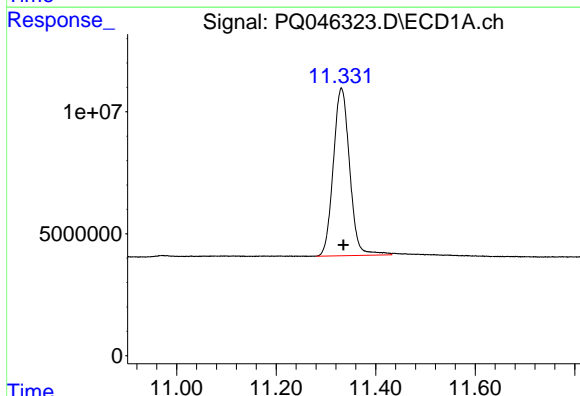
R.T.: 5.196 min  
 Delta R.T.: -0.003 min  
 Response: 210601965  
 Conc: 35.02 ng/ml

Instrument :  
 ECD\_Q  
 ClientSampleId :  
 C-3\_013020



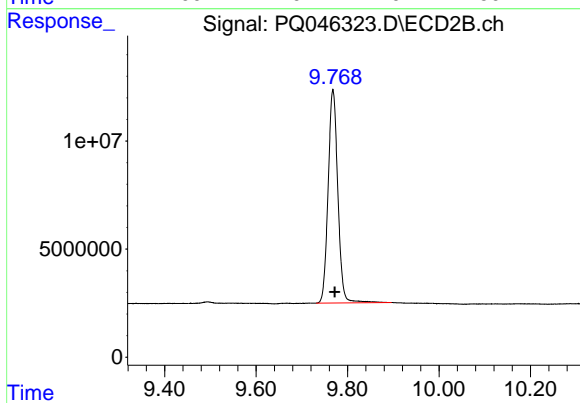
#1 Tetrachloro-m-xylene

R.T.: 4.345 min  
 Delta R.T.: -0.003 min  
 Response: 99700829  
 Conc: 33.86 ng/ml



#2 Decachlorobiphenyl

R.T.: 11.331 min  
 Delta R.T.: -0.004 min  
 Response: 156640517  
 Conc: 30.44 ng/ml



#2 Decachlorobiphenyl

R.T.: 9.768 min  
 Delta R.T.: -0.004 min  
 Response: 145228507  
 Conc: 28.48 ng/ml