

Data Path : Z:\pestpcbsrv\HPCHEM1\ECD_Q\Data\PQ020119\
 Data File : PQ036886.D
 Signal(s) : Signal #1: ECD1A.ch Signal #2: ECD2B.ch
 Acq On : 01 Feb 2019 11:24
 Operator : SM\SJ
 Sample : K1266-05
 Misc :
 ALS Vial : 20 Sample Multiplier: 1

Instrument :
 ECD_Q
 ClientSampleId :
 012519-SIDI-E-U-M

Integration File signal 1: autoint1.e
 Integration File signal 2: autoint2.e
 Quant Time: Feb 01 11:41:46 2019
 Quant Method : Z:\pestpcbsrv\HPCHEM1\ECD_Q\Method\PQ012419.M
 Quant Title : GC EXTRACTABLES
 QLast Update : Thu Jan 24 06:01:26 2019
 Response via : Initial Calibration
 Integrator: ChemStation

Volume Inj. : 2 µl
 Signal #1 Phase : ZB-MR1 Signal #2 Phase: ZB-MR2
 Signal #1 Info : 30Mx0.32mmx 0.50µ Signal #2 Info : 30M x 0.32mm x 0.25µm

Compound	RT#1	RT#2	Resp#1	Resp#2	ng/ml	ng/ml

System Monitoring Compounds						
1) SA Tetrachlo...	4.334	3.699	62687557	31838533	13.619	13.288
2) SA Decachlor...	9.919	8.632	26733436	9485184	7.333	5.042 #
Target Compounds						
3) L1 AR-1016-1	5.509	4.785	4763921	3899816	33.954	51.775 #
4) L1 AR-1016-2	5.509	4.785	4763921	3899816	22.572	35.040 #
5) L1 AR-1016-3	0.000	5.000	0	2137948	N.D.	37.910 #
6) L1 AR-1016-4	5.753	5.000	3504144	2137948	35.237	47.327 #
7) L1 AR-1016-5	0.000	5.284	0	1181892	N.D.	20.263 #
8) L2 AR-1221-1	4.550	3.867	4319988	2062899	94.884	81.607
9) L2 AR-1221-2	4.621	4.069	4270467	3865424	126.846	205.946 #
10) L2 AR-1221-3	4.729	4.069	8598691	3865424	76.914	64.173
11) L3 AR-1232-1	4.729	4.069	8598691	3865424	92.356	76.831
12) L3 AR-1232-2	5.251	4.785	1843493	3899816	39.224	72.706 #
13) L3 AR-1232-3	5.509	5.000	4763921	2137948	48.114	83.692 #
14) L3 AR-1232-4	5.753	5.071	3504144	1590185	75.304	67.166
15) L3 AR-1232-5	5.796	5.284	2167948	1181892	63.164	46.783 #
16) L4 AR-1242-1	5.509	4.785	4763921	3899816	41.101	62.100 #
17) L4 AR-1242-2	5.509	4.785	4763921	3899816	26.870	41.785 #
18) L4 AR-1242-3	0.000	5.000	0	2137948	N.D.	45.691 #
19) L4 AR-1242-4	5.753	5.071	3504144	1590185	41.660	34.803
20) L4 AR-1242-5	6.399	5.557	4272001	2377868	47.081	42.478
21) L5 AR-1248-1	5.509	4.785	4763921	3899816	53.013	79.078 #
22) L5 AR-1248-2	5.796	5.000	2167948	2137948	17.769	32.952 #
23) L5 AR-1248-3	0.000	5.071	0	1590185	N.D.	23.996 #
24) L5 AR-1248-4	6.399	5.284	4272001	1181892	27.219	14.881 #
25) L5 AR-1248-5	6.399	5.597	4272001	1816485	28.788	22.990
26) L6 AR-1254-1	6.360	5.557	2862160	2377868	16.141	17.761
27) L6 AR-1254-2	6.589	0.000	5475248	0	21.018	N.D. #
28) L6 AR-1254-3	6.951	6.155	1894224	2061735	7.075	11.454 #
30) L6 AR-1254-5	7.613	6.740	2025701	1705135	9.922	11.354
31) L7 AR-1260-1	0.000	6.228	0	3097415	N.D.	26.983 #
32) L7 AR-1260-2	7.401	0.000	4590016	0	19.875	N.D. #
33) L7 AR-1260-3	7.742	6.609	855890	1382580	5.935	10.787 #
34) L7 AR-1260-4	7.959	0.000	4395563	0	25.816	N.D. #
35) L7 AR-1260-5	0.000	7.266	0	7187664	N.D.	32.921 #
36) L8 AR-1262-1	7.742	6.800	855890	5037331	3.090	30.015 #
37) L8 AR-1262-2	0.000	7.266	0	7187664	N.D.	23.737 #
38) L8 AR-1262-3	8.570	0.000	1917933	0	9.222	N.D. #
39) L8 AR-1262-4	8.570	7.646	1917933	1225519	7.907	5.681 #
41) L9 AR-1268-1	8.570	0.000	1917933	0	3.040	N.D. #
42) L9 AR-1268-2	8.570	7.646	1917933	1225519	3.259	3.699

Data Path : Z:\pestpcbsrv\HPCHEM1\ECD_Q\Data\PQ020119\
Data File : PQ036886.D
Signal(s) : Signal #1: ECD1A.ch Signal #2: ECD2B.ch
Acq On : 01 Feb 2019 11:24
Operator : SM\SJ
Sample : K1266-05
Misc :
ALS Vial : 20 Sample Multiplier: 1

Instrument :
ECD_Q
ClientSampleId :
012519-SIDI-E-U-M

Integration File signal 1: autoint1.e
Integration File signal 2: autoint2.e
Quant Time: Feb 01 11:41:46 2019
Quant Method : Z:\pestpcbsrv\HPCHEM1\ECD_Q\Method\PQ012419.M
Quant Title : GC EXTRACTABLES
QLast Update : Thu Jan 24 06:01:26 2019
Response via : Initial Calibration
Integrator: ChemStation

Volume Inj. : 2 µl
Signal #1 Phase : ZB-MR1 Signal #2 Phase: ZB-MR2
Signal #1 Info : 30Mx0.32mmx 0.50µ Signal #2 Info : 30M x 0.32mm x 0.25µm

Compound	RT#1	RT#2	Resp#1	Resp#2	ng/ml	ng/ml
----------	------	------	--------	--------	-------	-------

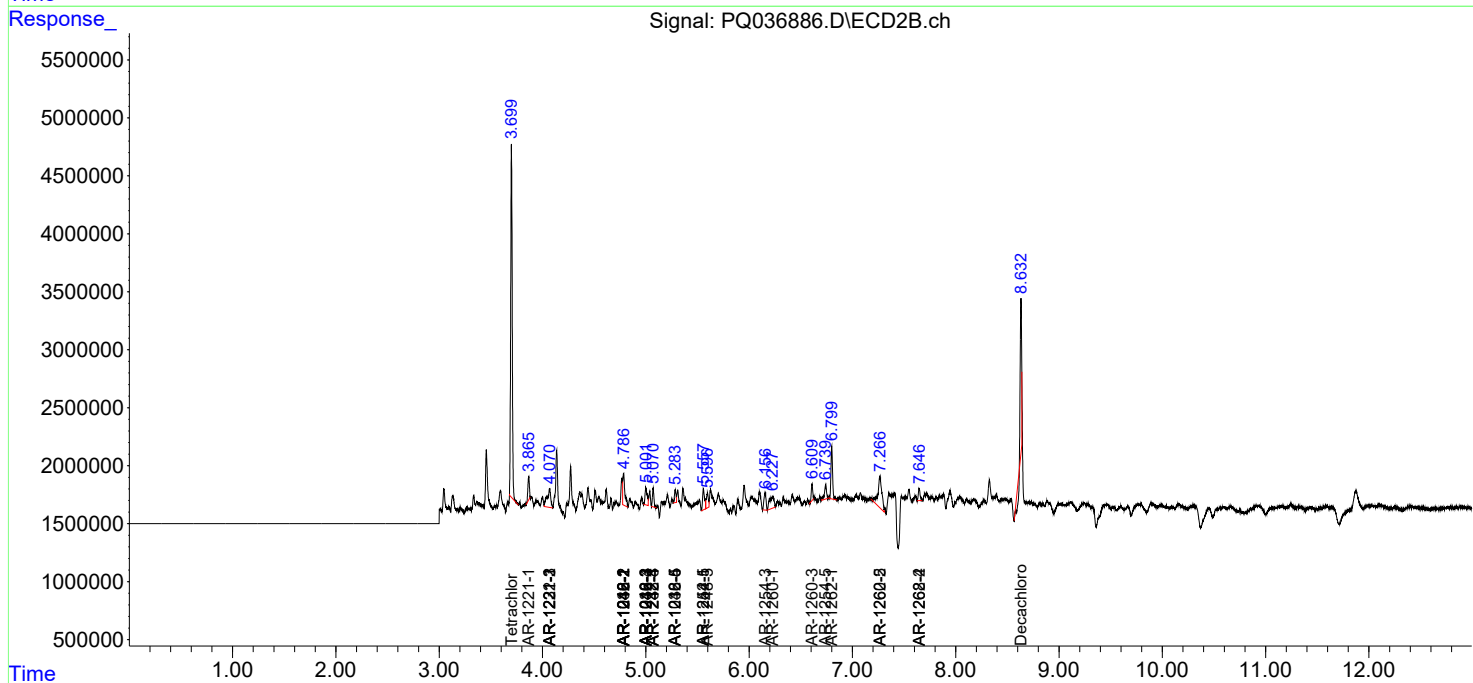
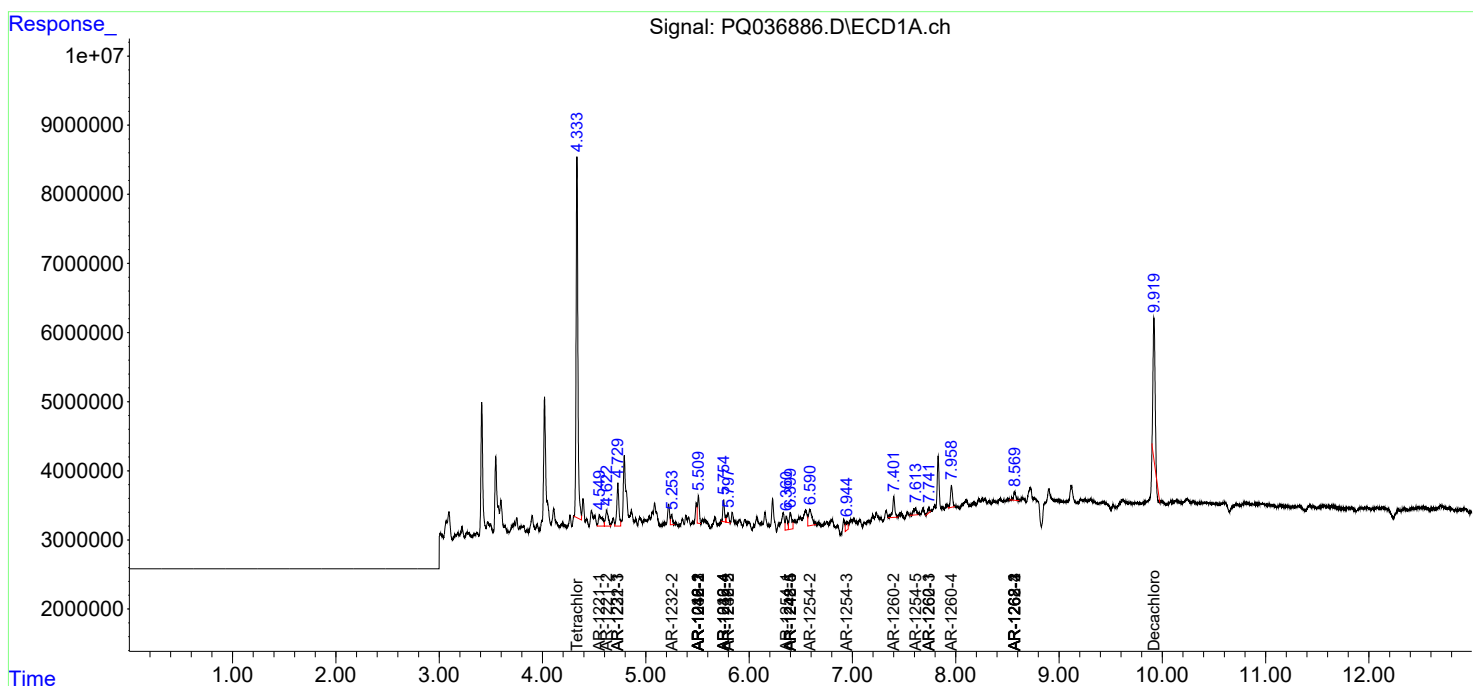
(f)=RT Delta > 1/2 Window (#)=Amounts differ by > 25% (m)=manual int.

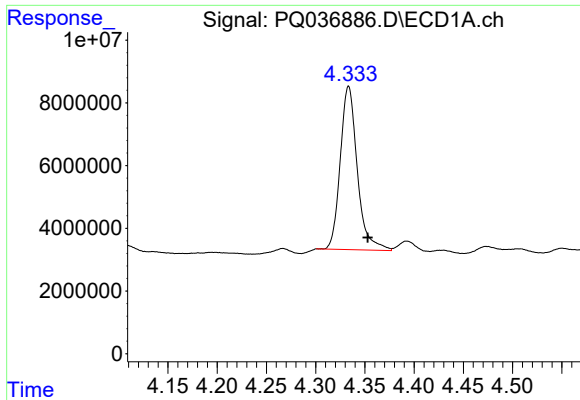
Data Path : Z:\pestpcbsrv\HPCHEM1\ECD_Q\Data\PQ020119\
 Data File : PQ036886.D
 Signal(s) : Signal #1: ECD1A.ch Signal #2: ECD2B.ch
 Acq On : 01 Feb 2019 11:24
 Operator : SM\SJ
 Sample : K1266-05
 Misc :
 ALS Vial : 20 Sample Multiplier: 1

Instrument :
 ECD_Q
 Client Sampled :
 012519-SIDI-E-U-M

Integration File signal 1: autoint1.e
 Integration File signal 2: autoint2.e
 Quant Time: Feb 01 11:41:46 2019
 Quant Method : Z:\pestpcbsrv\HPCHEM1\ECD_Q\Method\PQ012419.M
 Quant Title : GC EXTRACTABLES
 QLast Update : Thu Jan 24 06:01:26 2019
 Response via : Initial Calibration
 Integrator: ChemStation

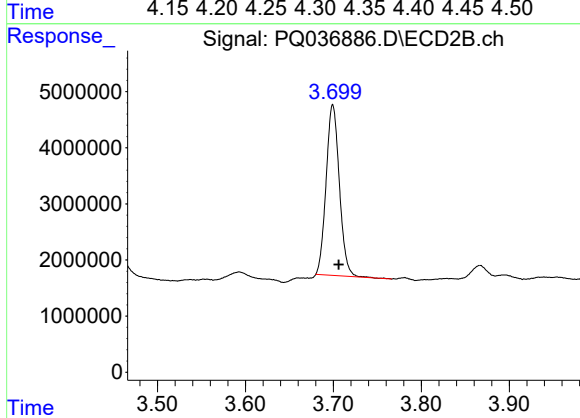
Volume Inj. : 2 µl
 Signal #1 Phase : ZB-MR1 Signal #2 Phase: ZB-MR2
 Signal #1 Info : 30Mx0.32mmx 0.50µ Signal #2 Info : 30M x 0.32mm x 0.25µm



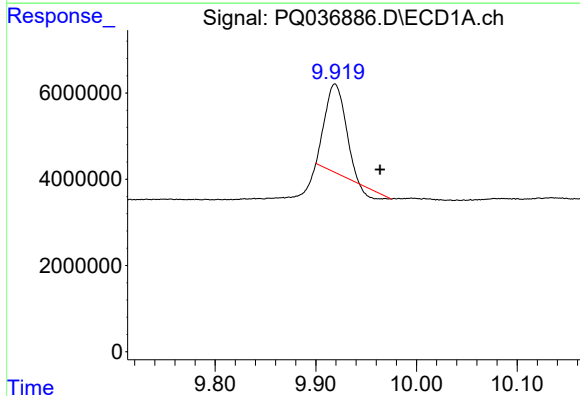


#1 Tetrachloro-m-xylene
 R.T.: 4.334 min
 Delta R.T.: -0.019 min
 Response: 62687557
 Conc: 13.62 ng/ml

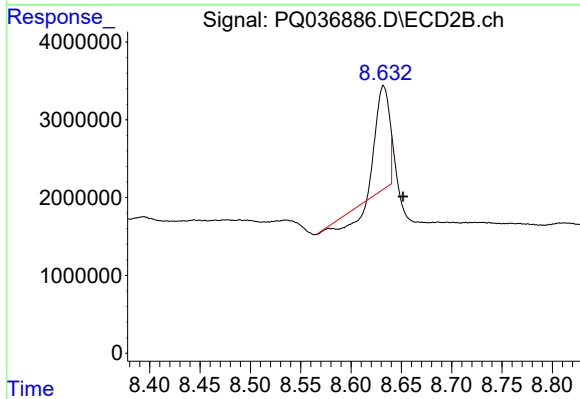
Instrument :
 ECD_Q
 ClientSampleId :
 012519-SIDI-E-U-M



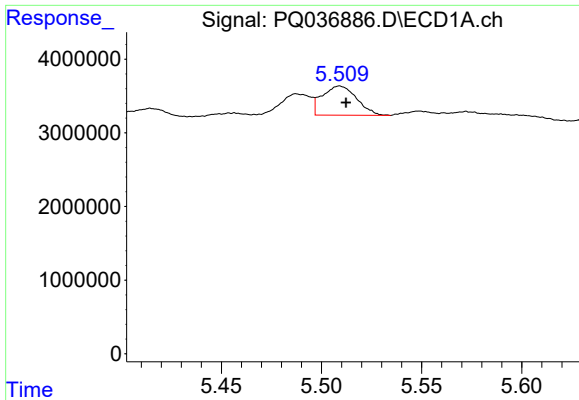
#1 Tetrachloro-m-xylene
 R.T.: 3.699 min
 Delta R.T.: -0.007 min
 Response: 31838533
 Conc: 13.29 ng/ml



#2 Decachlorobiphenyl
 R.T.: 9.919 min
 Delta R.T.: -0.045 min
 Response: 26733436
 Conc: 7.33 ng/ml

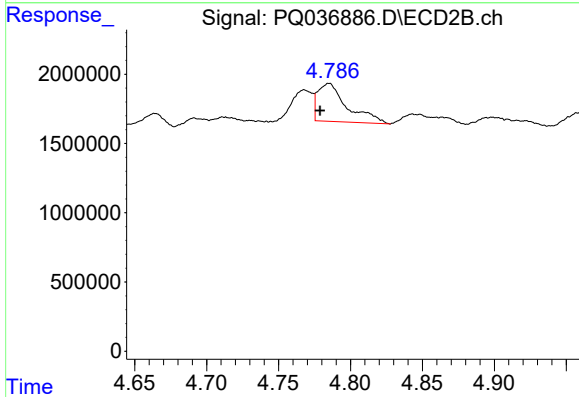


#2 Decachlorobiphenyl
 R.T.: 8.632 min
 Delta R.T.: -0.019 min
 Response: 9485184
 Conc: 5.04 ng/ml

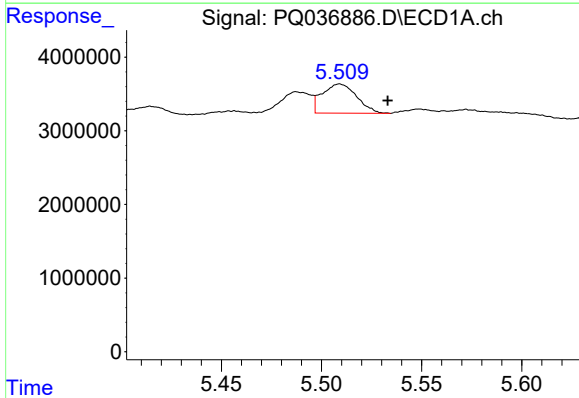


#3 AR-1016-1
 R.T.: 5.509 min
 Delta R.T.: -0.003 min
 Response: 4763921
 Conc: 33.95 ng/ml

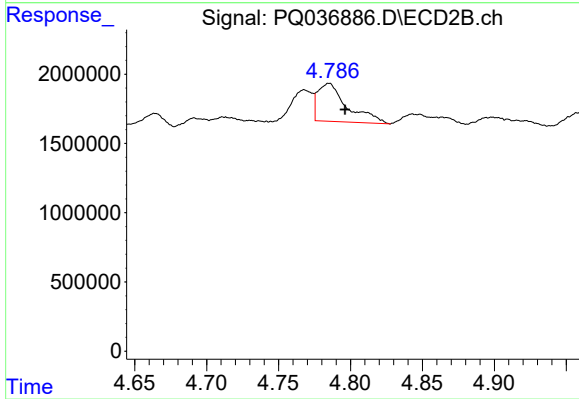
Instrument :
 ECD_Q
ClientSampleId :
 012519-SIDI-E-U-M



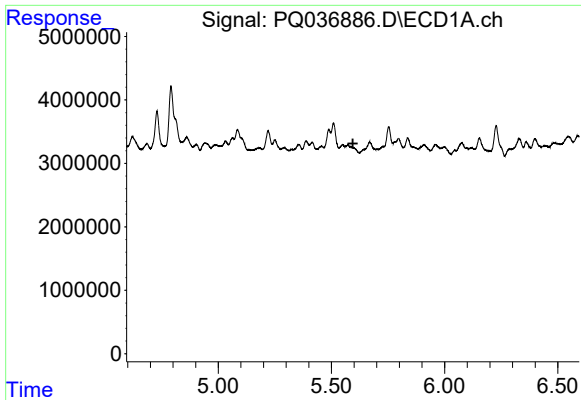
#3 AR-1016-1
 R.T.: 4.785 min
 Delta R.T.: 0.006 min
 Response: 3899816
 Conc: 51.78 ng/ml



#4 AR-1016-2
 R.T.: 5.509 min
 Delta R.T.: -0.024 min
 Response: 4763921
 Conc: 22.57 ng/ml



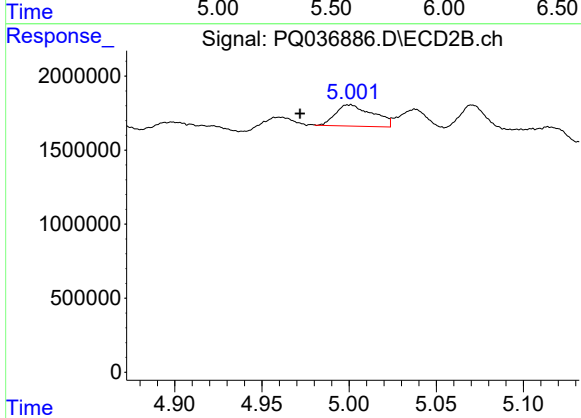
#4 AR-1016-2
 R.T.: 4.785 min
 Delta R.T.: -0.011 min
 Response: 3899816
 Conc: 35.04 ng/ml



#5 AR-1016-3

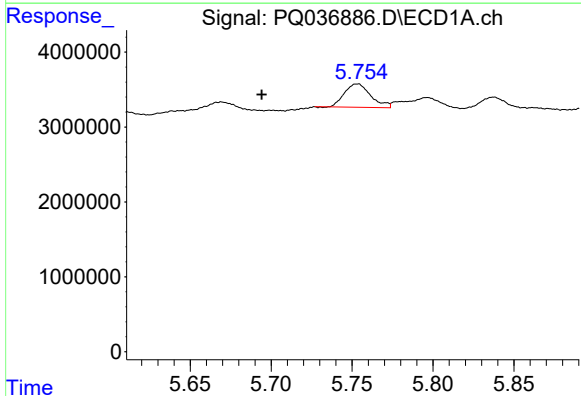
R.T.: 0.000 min
 Exp R.T.: 5.595 min
 Response: 0
 Conc: N.D.

Instrument :
 ECD_Q
ClientSampleId :
 012519-SIDI-E-U-M



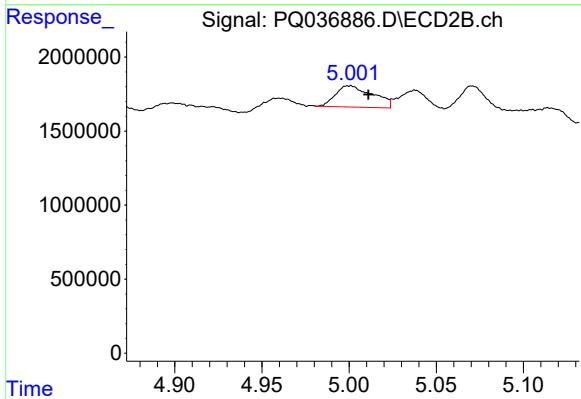
#5 AR-1016-3

R.T.: 5.000 min
 Delta R.T.: 0.028 min
 Response: 2137948
 Conc: 37.91 ng/ml



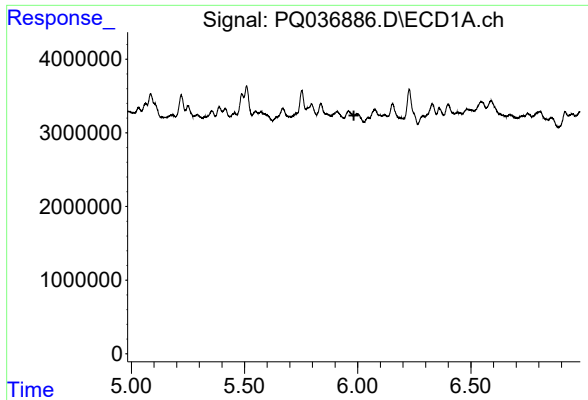
#6 AR-1016-4

R.T.: 5.753 min
 Delta R.T.: 0.059 min
 Response: 3504144
 Conc: 35.24 ng/ml



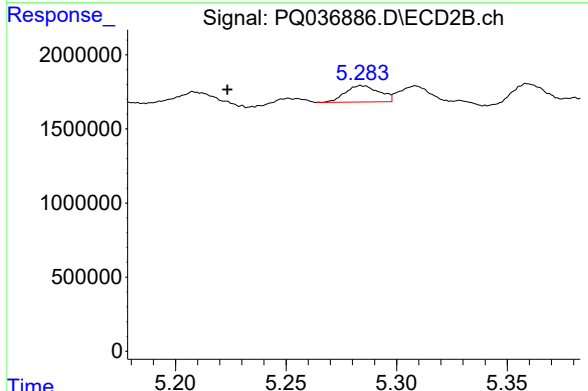
#6 AR-1016-4

R.T.: 5.000 min
 Delta R.T.: -0.011 min
 Response: 2137948
 Conc: 47.33 ng/ml

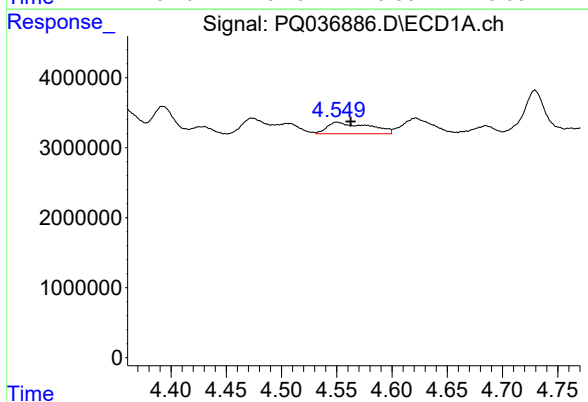


#7 AR-1016-5
 R.T.: 0.000 min
 Exp R.T.: 5.983 min
 Response: 0
 Conc: N.D.

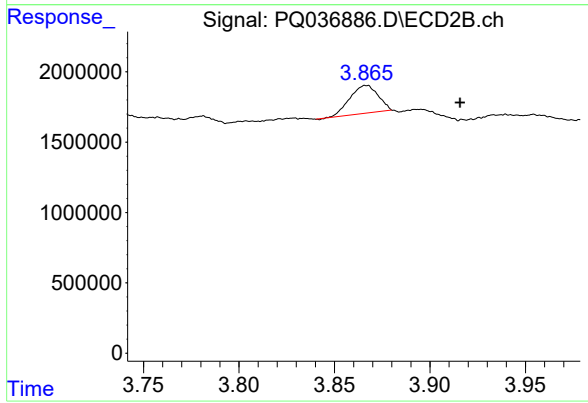
Instrument :
 ECD_Q
ClientSampleId :
 012519-SIDI-E-U-M



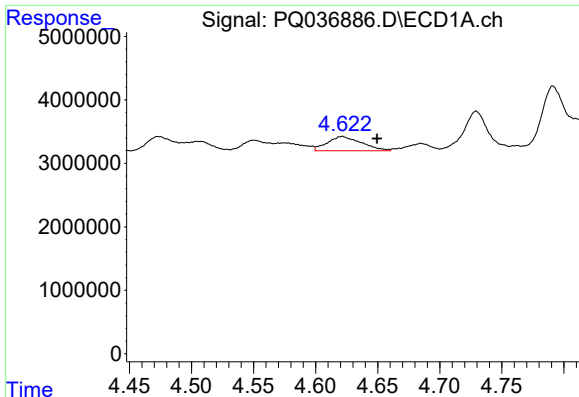
#7 AR-1016-5
 R.T.: 5.284 min
 Delta R.T.: 0.061 min
 Response: 1181892
 Conc: 20.26 ng/ml



#8 AR-1221-1
 R.T.: 4.550 min
 Delta R.T.: -0.013 min
 Response: 4319988
 Conc: 94.88 ng/ml



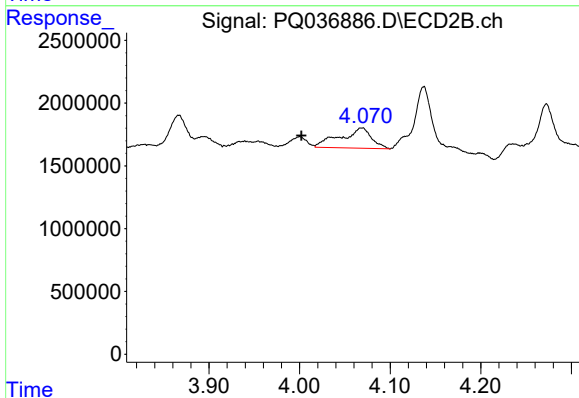
#8 AR-1221-1
 R.T.: 3.867 min
 Delta R.T.: -0.049 min
 Response: 2062899
 Conc: 81.61 ng/ml



#9 AR-1221-2

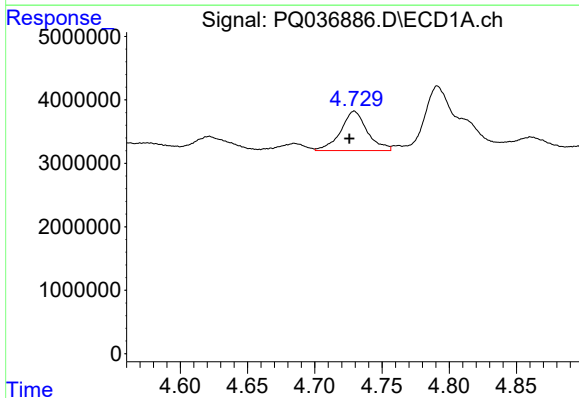
R.T.: 4.621 min
 Delta R.T.: -0.028 min
 Response: 4270467
 Conc: 126.85 ng/ml

Instrument :
 ECD_Q
 ClientSampleId :
 012519-SIDI-E-U-M



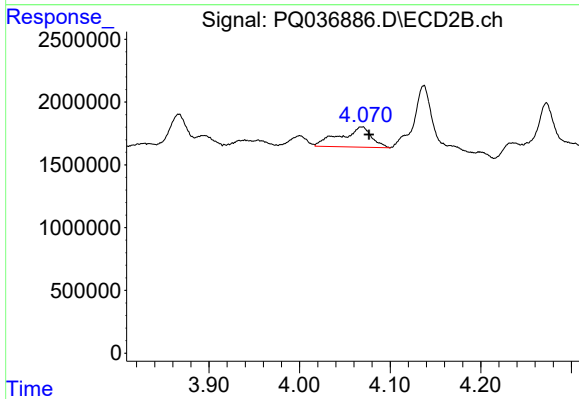
#9 AR-1221-2

R.T.: 4.069 min
 Delta R.T.: 0.067 min
 Response: 3865424
 Conc: 205.95 ng/ml



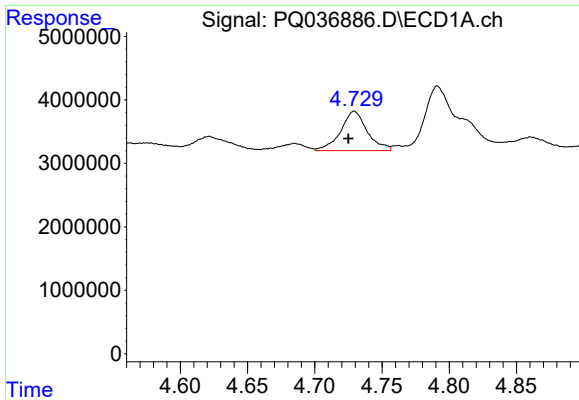
#10 AR-1221-3

R.T.: 4.729 min
 Delta R.T.: 0.003 min
 Response: 8598691
 Conc: 76.91 ng/ml



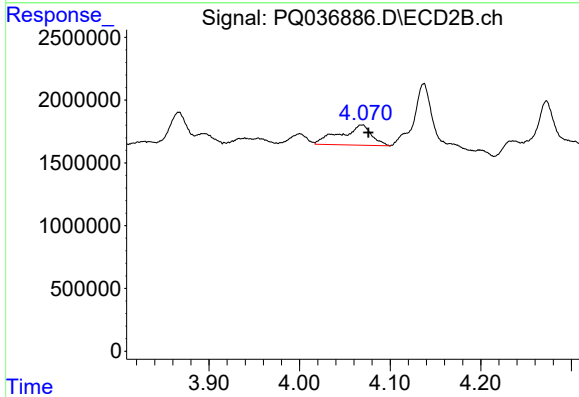
#10 AR-1221-3

R.T.: 4.069 min
 Delta R.T.: -0.008 min
 Response: 3865424
 Conc: 64.17 ng/ml

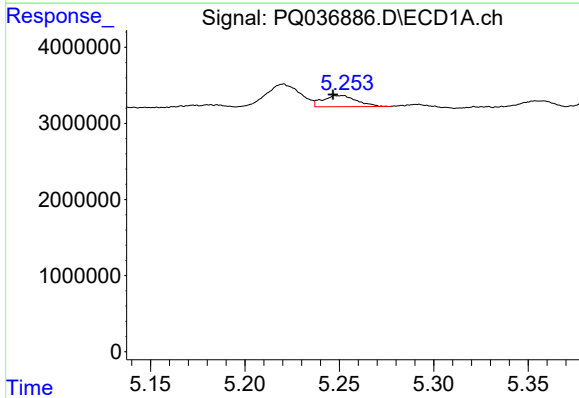


#11 AR-1232-1
 R.T.: 4.729 min
 Delta R.T.: 0.005 min
 Response: 8598691
 Conc: 92.36 ng/ml

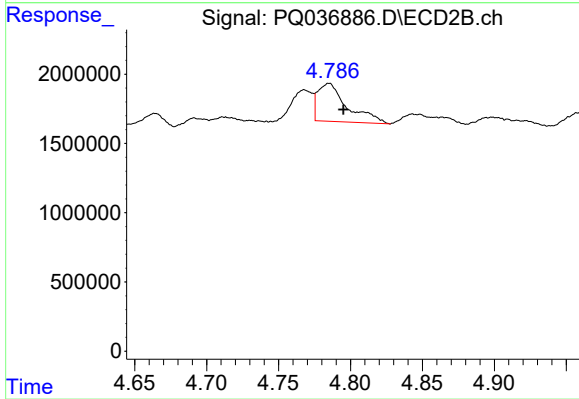
Instrument :
 ECD_Q
 ClientSampleId :
 012519-SIDI-E-U-M



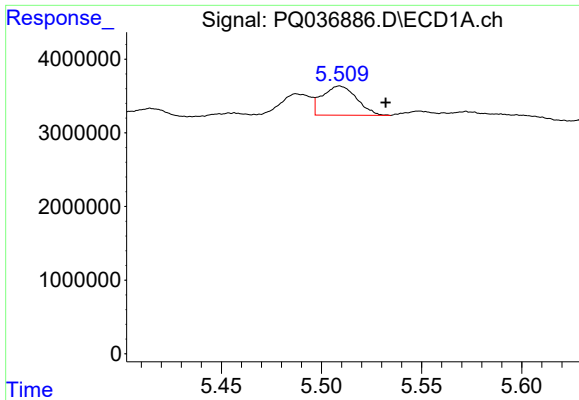
#11 AR-1232-1
 R.T.: 4.069 min
 Delta R.T.: -0.007 min
 Response: 3865424
 Conc: 76.83 ng/ml



#12 AR-1232-2
 R.T.: 5.251 min
 Delta R.T.: 0.004 min
 Response: 1843493
 Conc: 39.22 ng/ml

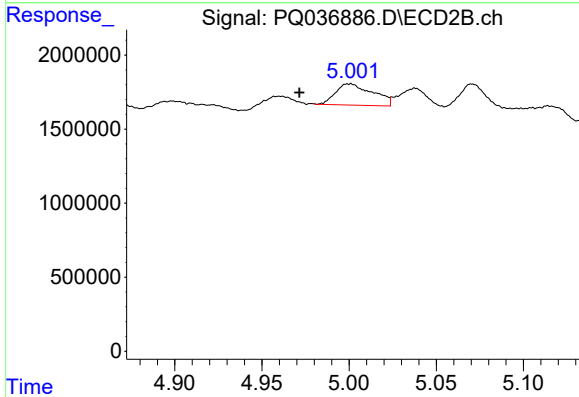


#12 AR-1232-2
 R.T.: 4.785 min
 Delta R.T.: -0.010 min
 Response: 3899816
 Conc: 72.71 ng/ml

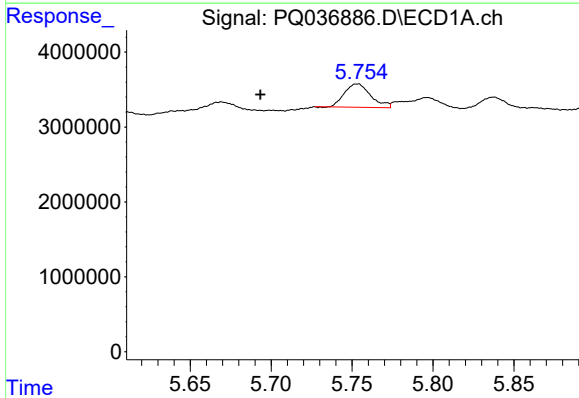


#13 AR-1232-3
 R.T.: 5.509 min
 Delta R.T.: -0.023 min
 Response: 4763921
 Conc: 48.11 ng/ml

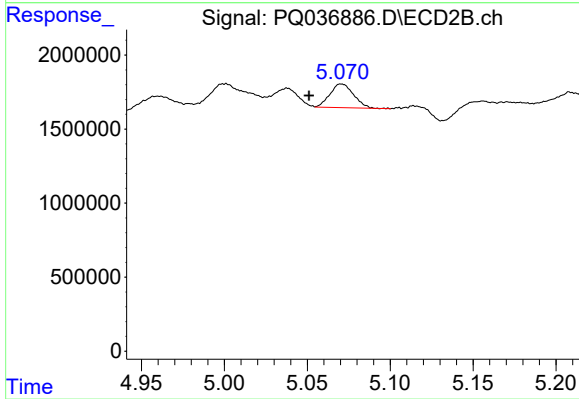
Instrument :
 ECD_Q
ClientSampleId :
 012519-SIDI-E-U-M



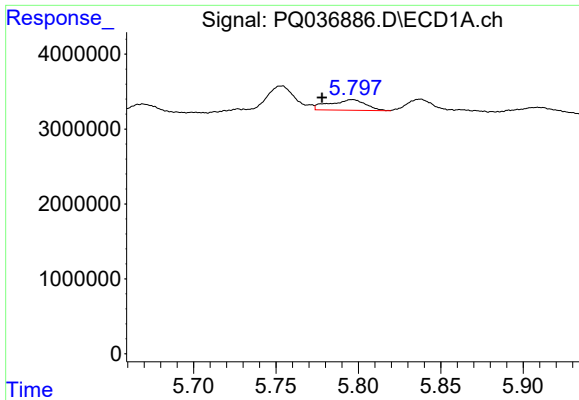
#13 AR-1232-3
 R.T.: 5.000 min
 Delta R.T.: 0.029 min
 Response: 2137948
 Conc: 83.69 ng/ml



#14 AR-1232-4
 R.T.: 5.753 min
 Delta R.T.: 0.060 min
 Response: 3504144
 Conc: 75.30 ng/ml



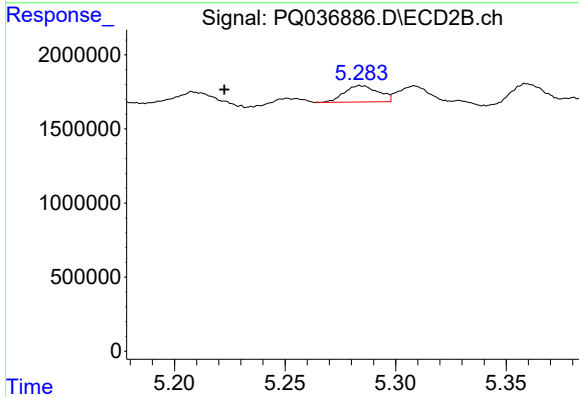
#14 AR-1232-4
 R.T.: 5.071 min
 Delta R.T.: 0.020 min
 Response: 1590185
 Conc: 67.17 ng/ml



#15 AR-1232-5

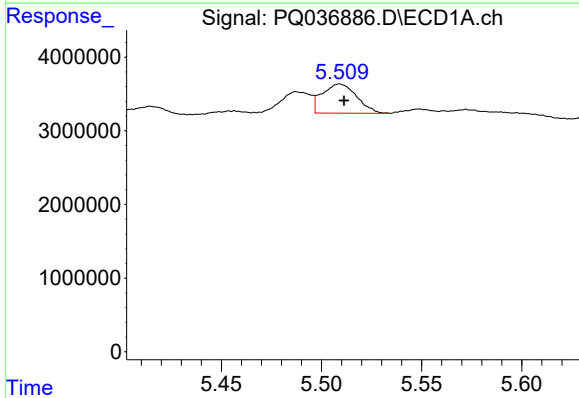
R.T.: 5.796 min
 Delta R.T.: 0.018 min
 Response: 2167948
 Conc: 63.16 ng/ml

Instrument :
 ECD_Q
ClientSampleId :
 012519-SIDI-E-U-M



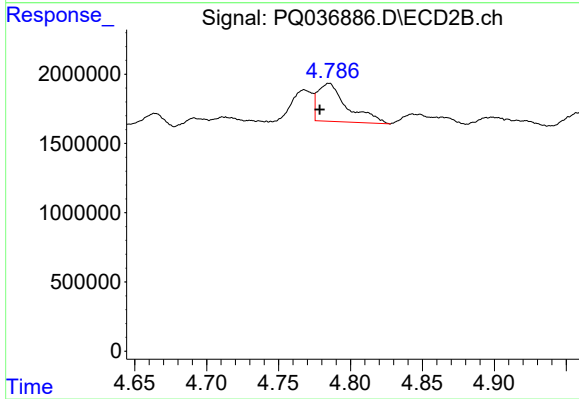
#15 AR-1232-5

R.T.: 5.284 min
 Delta R.T.: 0.062 min
 Response: 1181892
 Conc: 46.78 ng/ml



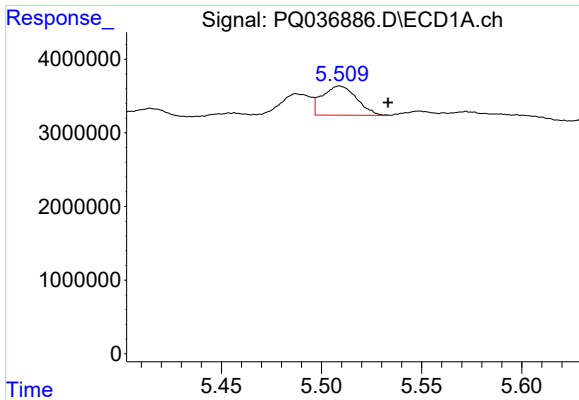
#16 AR-1242-1

R.T.: 5.509 min
 Delta R.T.: -0.002 min
 Response: 4763921
 Conc: 41.10 ng/ml



#16 AR-1242-1

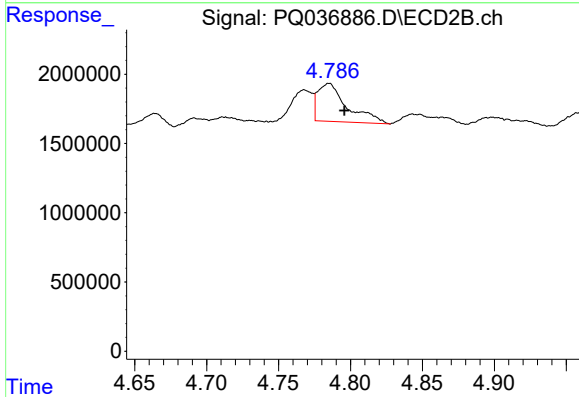
R.T.: 4.785 min
 Delta R.T.: 0.006 min
 Response: 3899816
 Conc: 62.10 ng/ml



#17 AR-1242-2

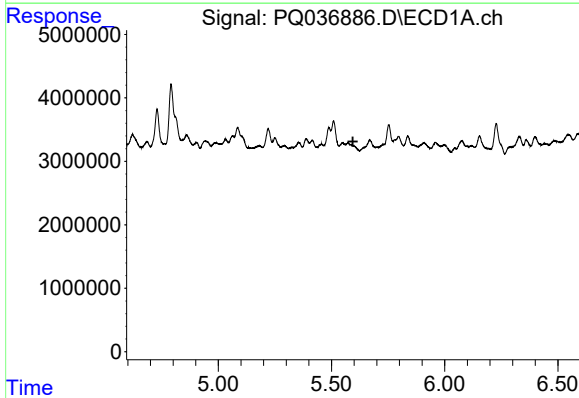
R.T.: 5.509 min
 Delta R.T.: -0.024 min
 Response: 4763921
 Conc: 26.87 ng/ml

Instrument :
 ECD_Q
 ClientSampleId :
 012519-SIDI-E-U-M



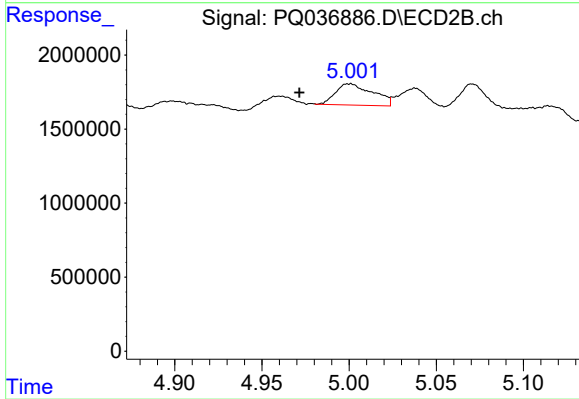
#17 AR-1242-2

R.T.: 4.785 min
 Delta R.T.: -0.011 min
 Response: 3899816
 Conc: 41.79 ng/ml



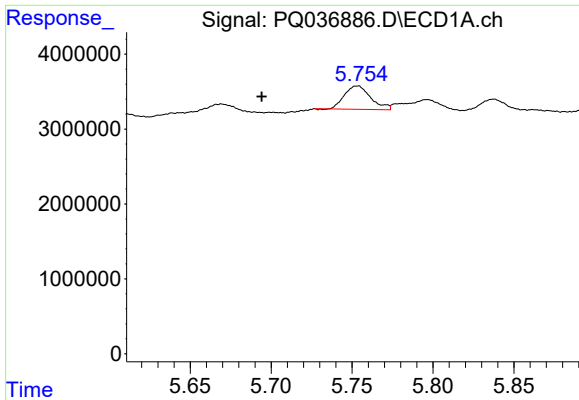
#18 AR-1242-3

R.T.: 0.000 min
 Exp R.T. : 5.594 min
 Response: 0
 Conc: N.D.



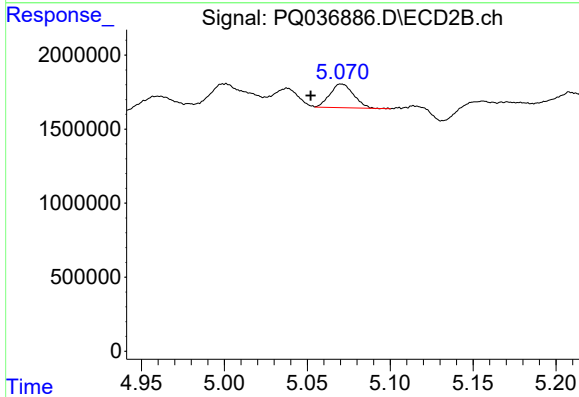
#18 AR-1242-3

R.T.: 5.000 min
 Delta R.T.: 0.029 min
 Response: 2137948
 Conc: 45.69 ng/ml

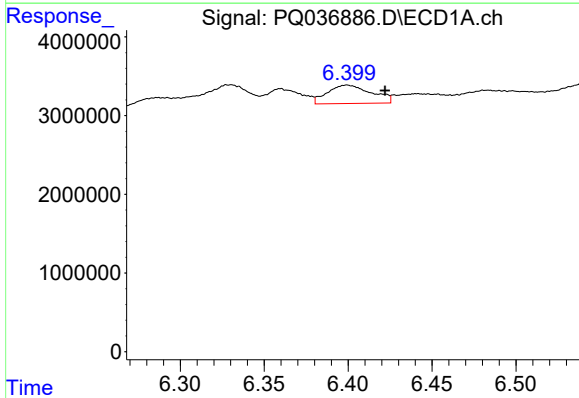


#19 AR-1242-4
 R.T.: 5.753 min
 Delta R.T.: 0.059 min
 Response: 3504144
 Conc: 41.66 ng/ml

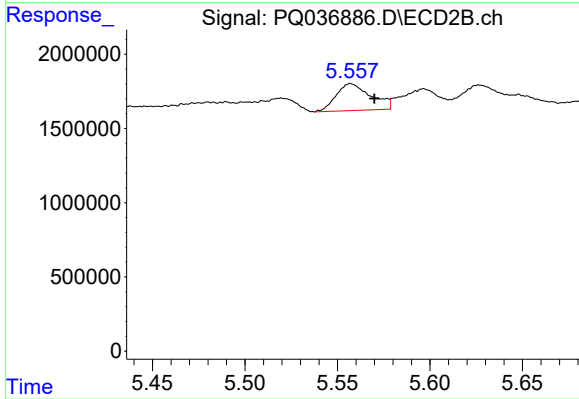
Instrument :
 ECD_Q
ClientSampleId :
 012519-SIDI-E-U-M



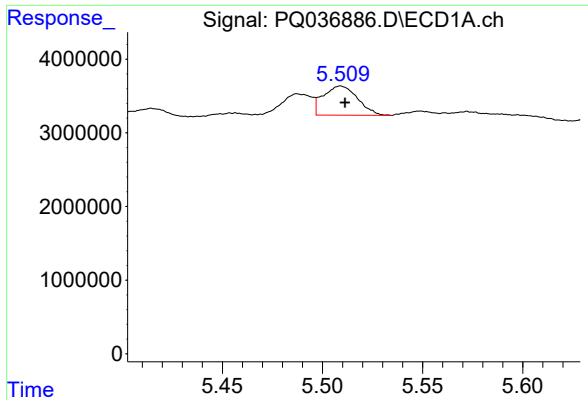
#19 AR-1242-4
 R.T.: 5.071 min
 Delta R.T.: 0.019 min
 Response: 1590185
 Conc: 34.80 ng/ml



#20 AR-1242-5
 R.T.: 6.399 min
 Delta R.T.: -0.023 min
 Response: 4272001
 Conc: 47.08 ng/ml

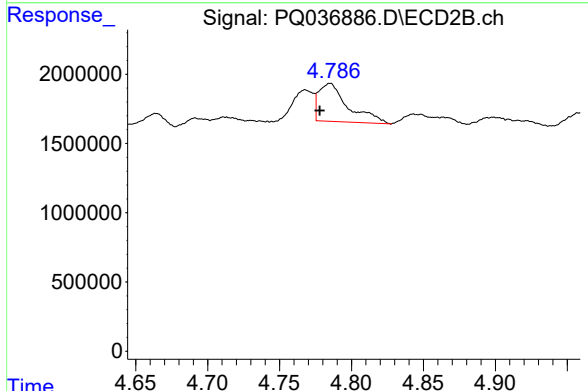


#20 AR-1242-5
 R.T.: 5.557 min
 Delta R.T.: -0.013 min
 Response: 2377868
 Conc: 42.48 ng/ml

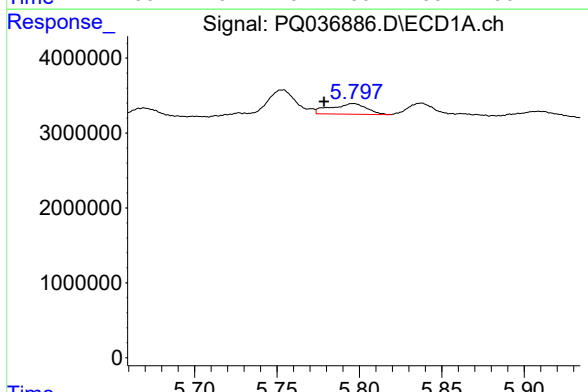


#21 AR-1248-1
 R.T.: 5.509 min
 Delta R.T.: -0.002 min
 Response: 4763921
 Conc: 53.01 ng/ml

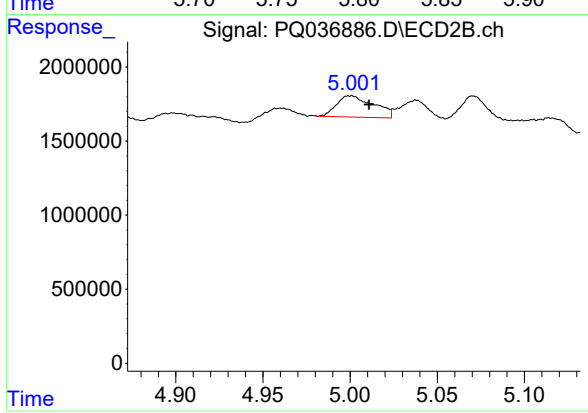
Instrument :
 ECD_Q
ClientSampleId :
 012519-SIDI-E-U-M



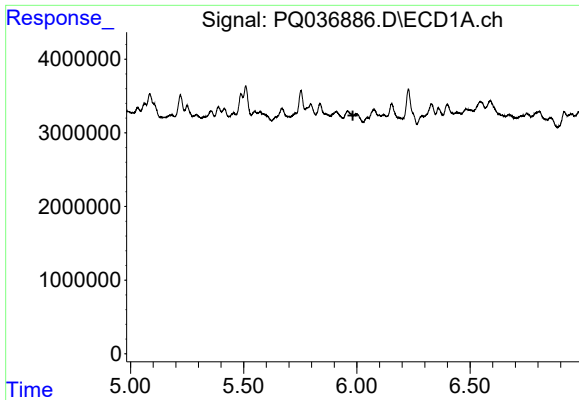
#21 AR-1248-1
 R.T.: 4.785 min
 Delta R.T.: 0.007 min
 Response: 3899816
 Conc: 79.08 ng/ml



#22 AR-1248-2
 R.T.: 5.796 min
 Delta R.T.: 0.018 min
 Response: 2167948
 Conc: 17.77 ng/ml



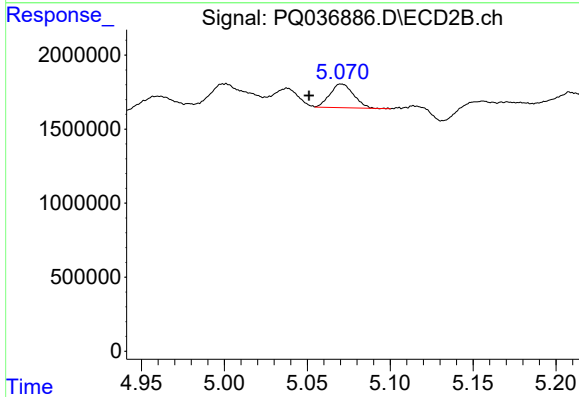
#22 AR-1248-2
 R.T.: 5.000 min
 Delta R.T.: -0.011 min
 Response: 2137948
 Conc: 32.95 ng/ml



#23 AR-1248-3

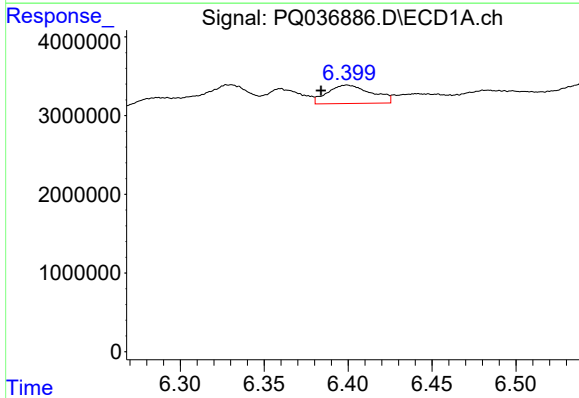
R.T.: 0.000 min
 Exp R.T.: 5.982 min
 Response: 0
 Conc: N.D.

Instrument :
 ECD_Q
ClientSampleId :
 012519-SIDI-E-U-M



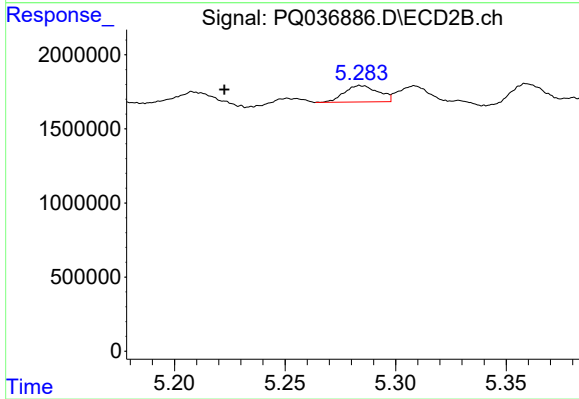
#23 AR-1248-3

R.T.: 5.071 min
 Delta R.T.: 0.020 min
 Response: 1590185
 Conc: 24.00 ng/ml



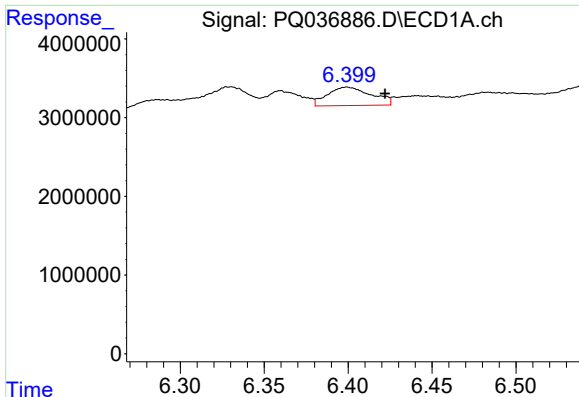
#24 AR-1248-4

R.T.: 6.399 min
 Delta R.T.: 0.015 min
 Response: 4272001
 Conc: 27.22 ng/ml



#24 AR-1248-4

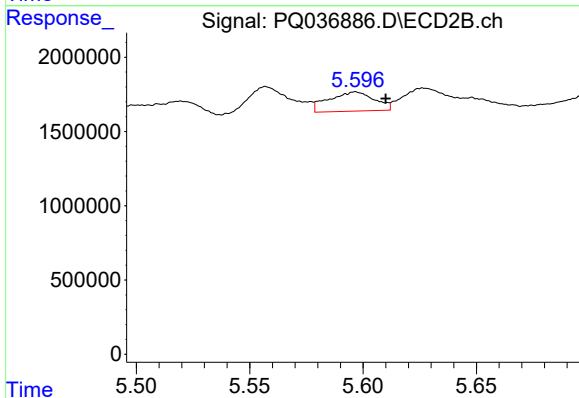
R.T.: 5.284 min
 Delta R.T.: 0.062 min
 Response: 1181892
 Conc: 14.88 ng/ml



#25 AR-1248-5

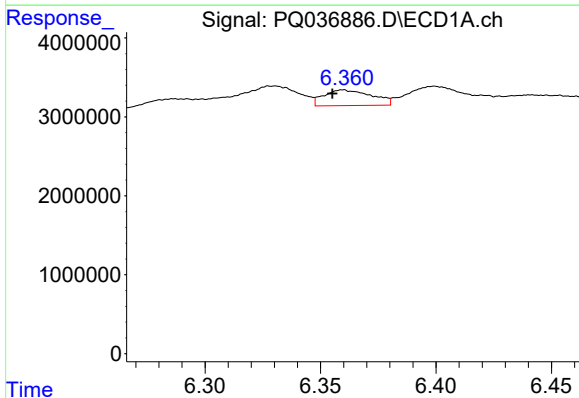
R.T.: 6.399 min
 Delta R.T.: -0.023 min
 Response: 4272001
 Conc: 28.79 ng/ml

Instrument :
 ECD_Q
 ClientSampleId :
 012519-SIDI-E-U-M



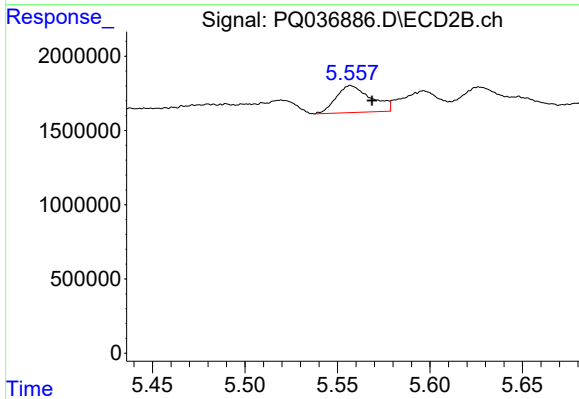
#25 AR-1248-5

R.T.: 5.597 min
 Delta R.T.: -0.013 min
 Response: 1816485
 Conc: 22.99 ng/ml



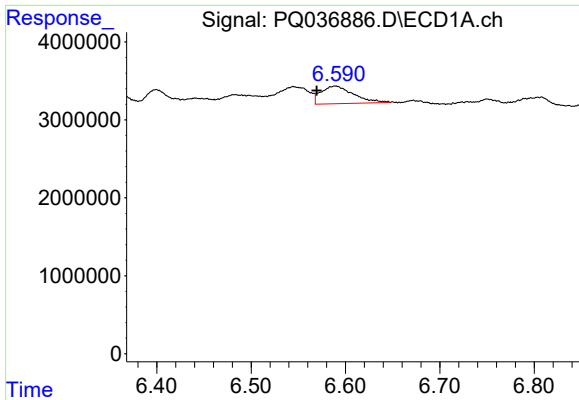
#26 AR-1254-1

R.T.: 6.360 min
 Delta R.T.: 0.004 min
 Response: 2862160
 Conc: 16.14 ng/ml



#26 AR-1254-1

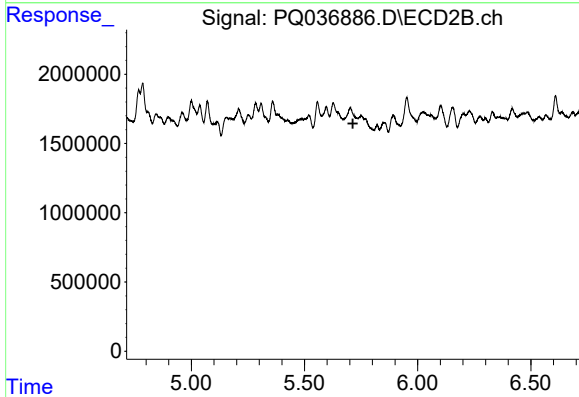
R.T.: 5.557 min
 Delta R.T.: -0.011 min
 Response: 2377868
 Conc: 17.76 ng/ml



#27 AR-1254-2

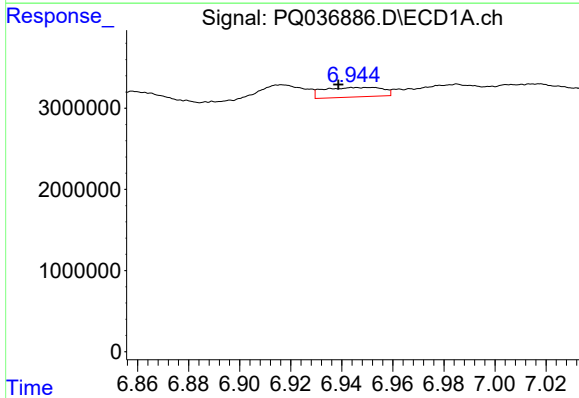
R.T.: 6.589 min
 Delta R.T.: 0.020 min
 Response: 5475248
 Conc: 21.02 ng/ml

Instrument :
 ECD_Q
ClientSampleId :
 012519-SIDI-E-U-M



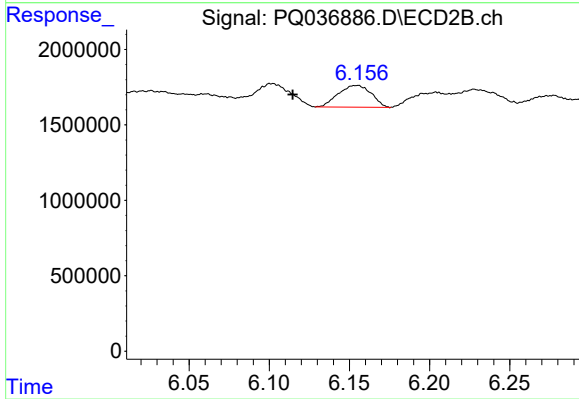
#27 AR-1254-2

R.T.: 0.000 min
 Exp R.T. : 5.714 min
 Response: 0
 Conc: N.D.



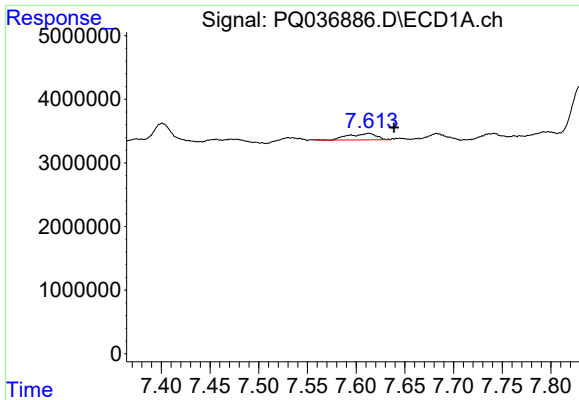
#28 AR-1254-3

R.T.: 6.951 min
 Delta R.T.: 0.013 min
 Response: 1894224
 Conc: 7.07 ng/ml



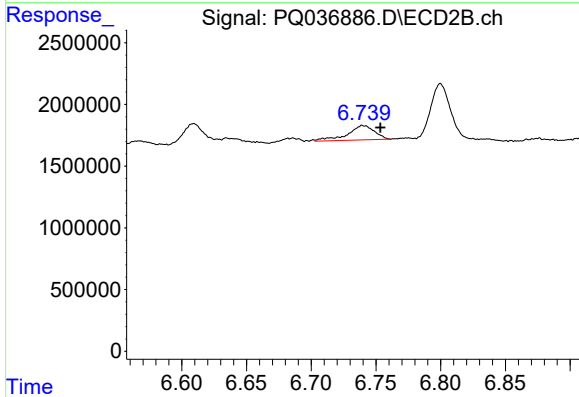
#28 AR-1254-3

R.T.: 6.155 min
 Delta R.T.: 0.040 min
 Response: 2061735
 Conc: 11.45 ng/ml

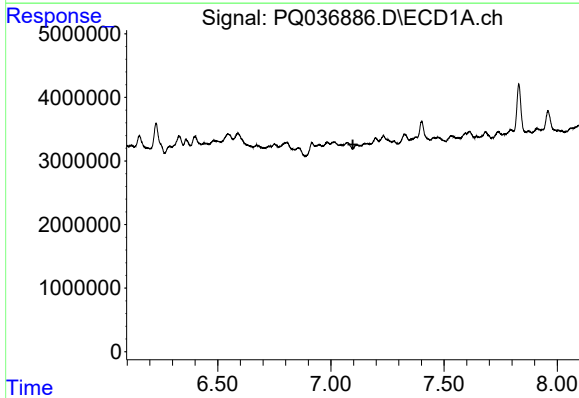


#30 AR-1254-5
 R.T.: 7.613 min
 Delta R.T.: -0.026 min
 Response: 2025701
 Conc: 9.92 ng/ml

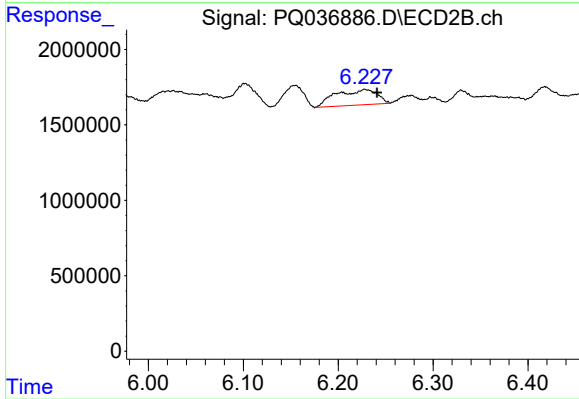
Instrument :
 ECD_Q
 ClientSampleId :
 012519-SIDI-E-U-M



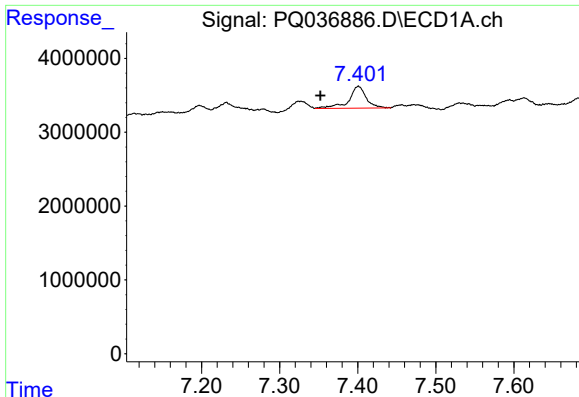
#30 AR-1254-5
 R.T.: 6.740 min
 Delta R.T.: -0.014 min
 Response: 1705135
 Conc: 11.35 ng/ml



#31 AR-1260-1
 R.T.: 0.000 min
 Exp R.T. : 7.097 min
 Response: 0
 Conc: N.D.



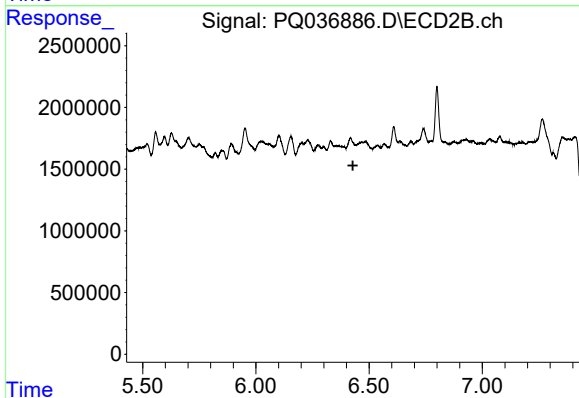
#31 AR-1260-1
 R.T.: 6.228 min
 Delta R.T.: -0.013 min
 Response: 3097415
 Conc: 26.98 ng/ml



#32 AR-1260-2

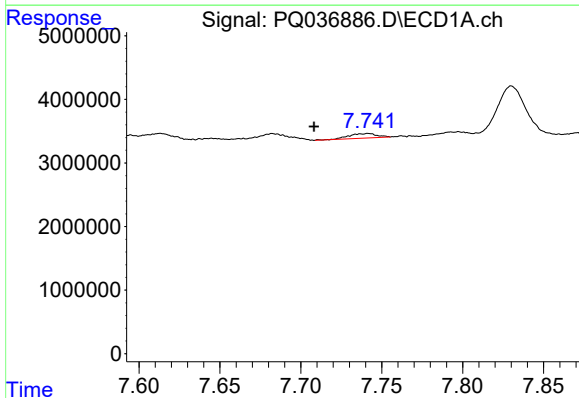
R.T.: 7.401 min
 Delta R.T.: 0.049 min
 Response: 4590016
 Conc: 19.88 ng/ml

Instrument :
 ECD_Q
ClientSampleId :
 012519-SIDI-E-U-M



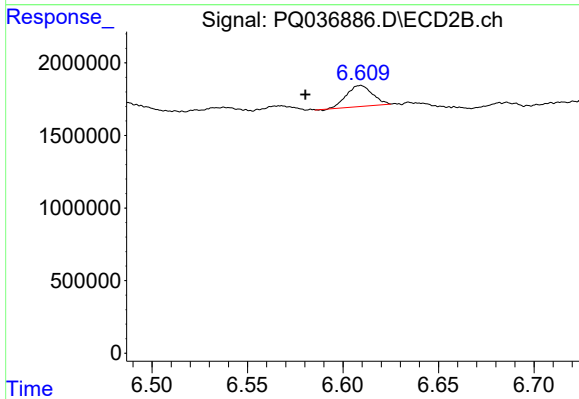
#32 AR-1260-2

R.T.: 0.000 min
 Exp R.T. : 6.428 min
 Response: 0
 Conc: N.D.



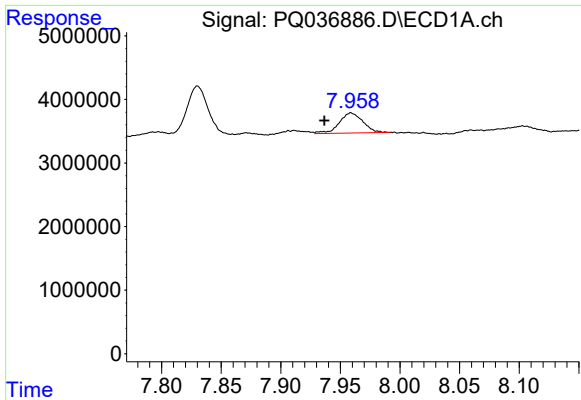
#33 AR-1260-3

R.T.: 7.742 min
 Delta R.T.: 0.034 min
 Response: 855890
 Conc: 5.94 ng/ml



#33 AR-1260-3

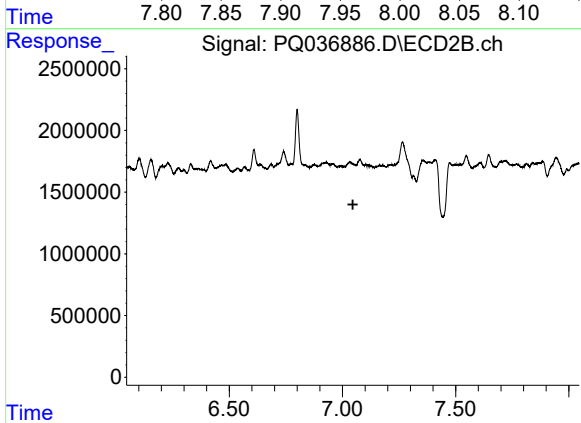
R.T.: 6.609 min
 Delta R.T.: 0.029 min
 Response: 1382580
 Conc: 10.79 ng/ml



#34 AR-1260-4

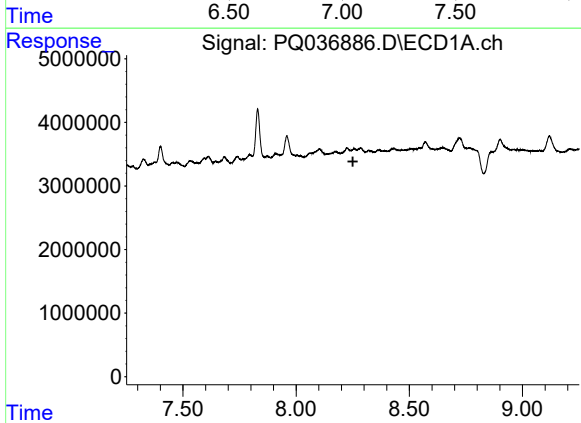
R.T.: 7.959 min
 Delta R.T.: 0.022 min
 Response: 4395563
 Conc: 25.82 ng/ml

Instrument :
 ECD_Q
 ClientSampleId :
 012519-SIDI-E-U-M



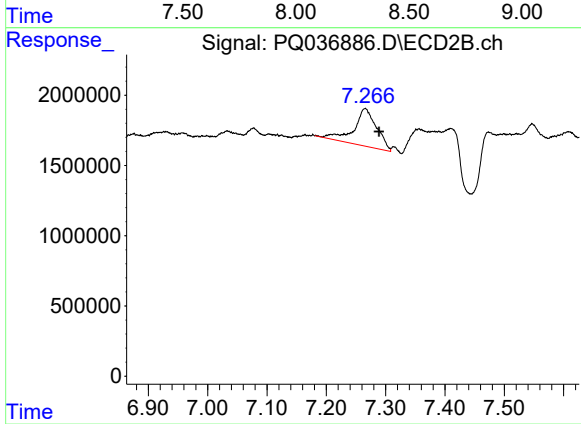
#34 AR-1260-4

R.T.: 0.000 min
 Exp R.T. : 7.046 min
 Response: 0
 Conc: N.D.



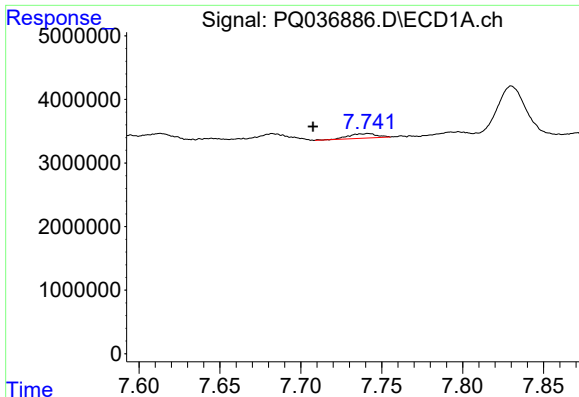
#35 AR-1260-5

R.T.: 0.000 min
 Exp R.T. : 8.251 min
 Response: 0
 Conc: N.D.



#35 AR-1260-5

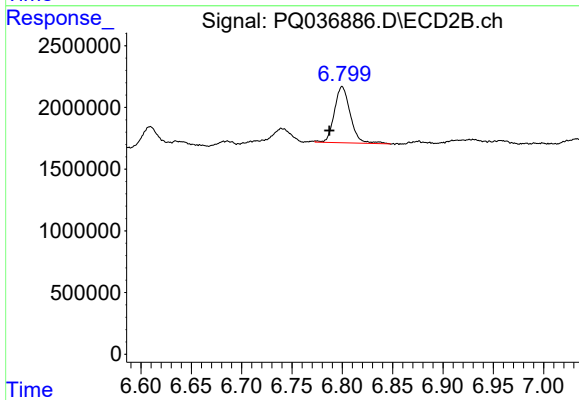
R.T.: 7.266 min
 Delta R.T.: -0.023 min
 Response: 7187664
 Conc: 32.92 ng/ml



#36 AR-1262-1

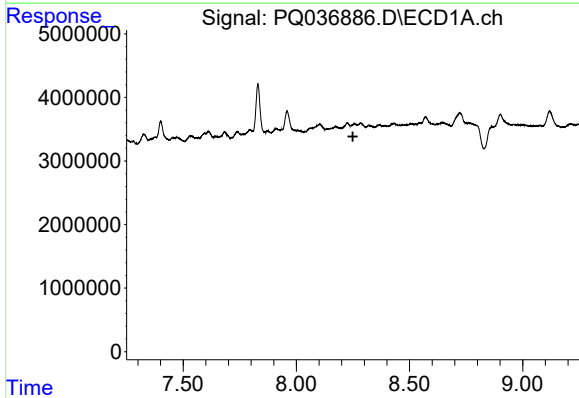
R.T.: 7.742 min
 Delta R.T.: 0.034 min
 Response: 855890
 Conc: 3.09 ng/ml

Instrument :
 ECD_Q
ClientSampleId :
 012519-SIDI-E-U-M



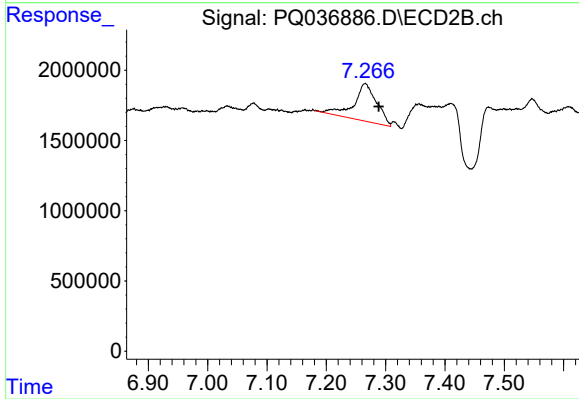
#36 AR-1262-1

R.T.: 6.800 min
 Delta R.T.: 0.013 min
 Response: 5037331
 Conc: 30.01 ng/ml



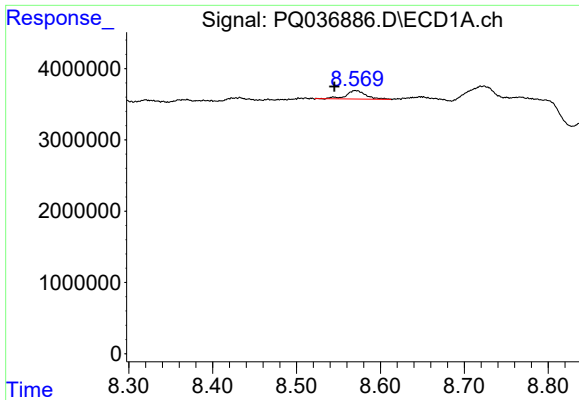
#37 AR-1262-2

R.T.: 0.000 min
 Exp R.T. : 8.250 min
 Response: 0
 Conc: N.D.



#37 AR-1262-2

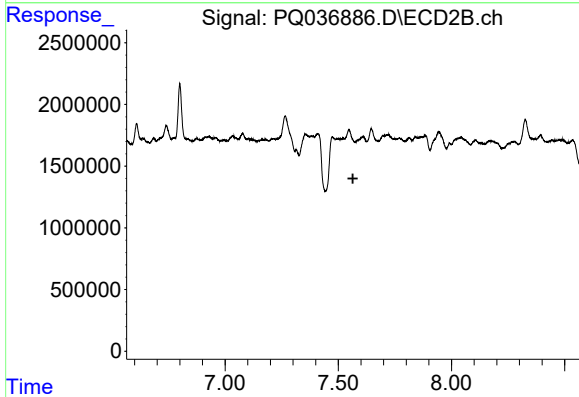
R.T.: 7.266 min
 Delta R.T.: -0.022 min
 Response: 7187664
 Conc: 23.74 ng/ml



#38 AR-1262-3

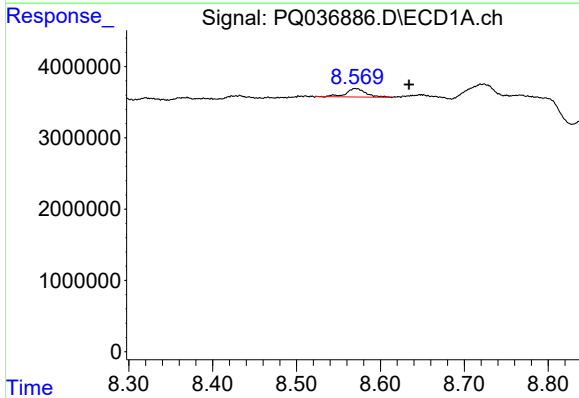
R.T.: 8.570 min
 Delta R.T.: 0.025 min
 Response: 1917933
 Conc: 9.22 ng/ml

Instrument :
 ECD_Q
ClientSampleId :
 012519-SIDI-E-U-M



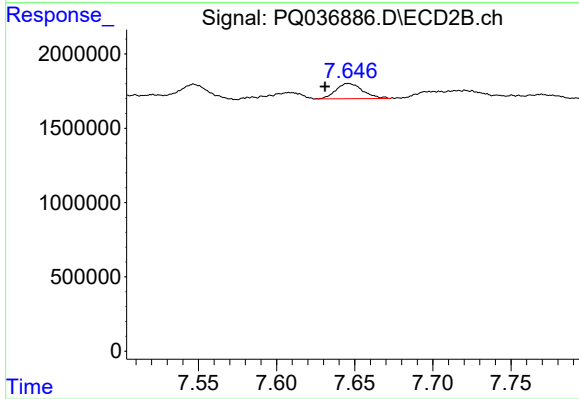
#38 AR-1262-3

R.T.: 0.000 min
 Exp R.T. : 7.564 min
 Response: 0
 Conc: N.D.



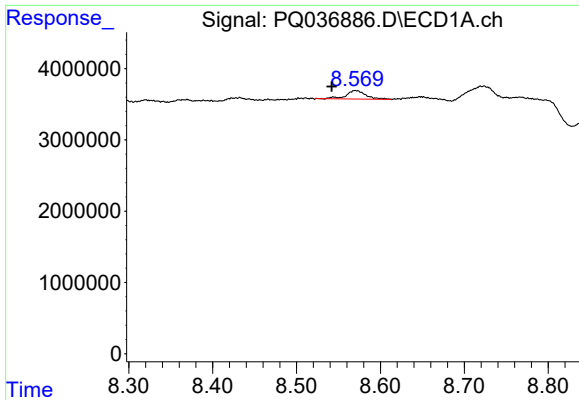
#39 AR-1262-4

R.T.: 8.570 min
 Delta R.T.: -0.064 min
 Response: 1917933
 Conc: 7.91 ng/ml



#39 AR-1262-4

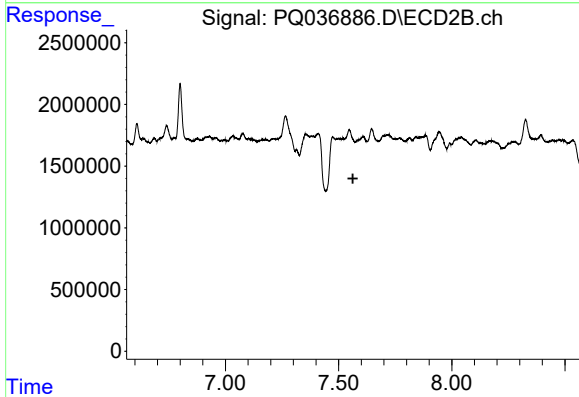
R.T.: 7.646 min
 Delta R.T.: 0.015 min
 Response: 1225519
 Conc: 5.68 ng/ml



#41 AR-1268-1

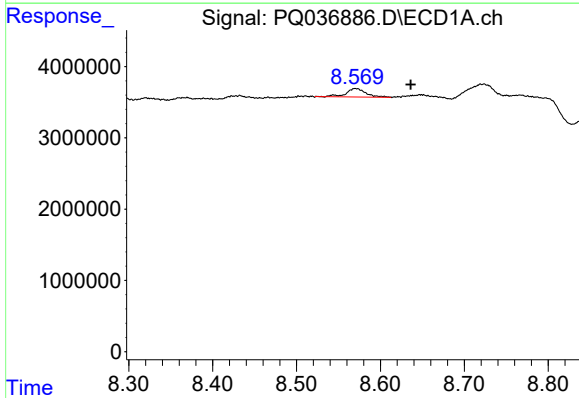
R.T.: 8.570 min
 Delta R.T.: 0.028 min
 Response: 1917933
 Conc: 3.04 ng/ml

Instrument :
 ECD_Q
ClientSampled :
 012519-SIDI-E-U-M



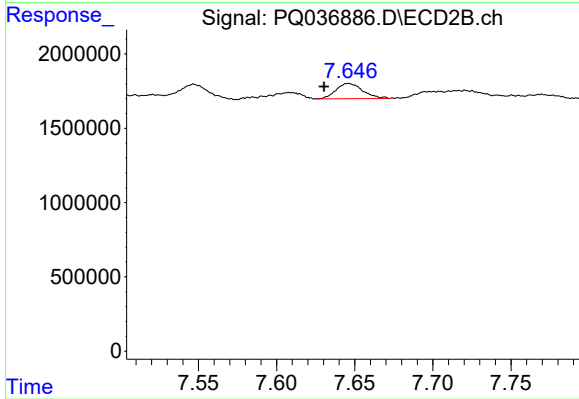
#41 AR-1268-1

R.T.: 0.000 min
 Exp R.T. : 7.563 min
 Response: 0
 Conc: N.D.



#42 AR-1268-2

R.T.: 8.570 min
 Delta R.T.: -0.066 min
 Response: 1917933
 Conc: 3.26 ng/ml



#42 AR-1268-2

R.T.: 7.646 min
 Delta R.T.: 0.016 min
 Response: 1225519
 Conc: 3.70 ng/ml