

Data Path : Z:\pestpcbsrv\HPCHEM1\ECD\_Q\Data\PQ020119\  
 Data File : PQ036944.D  
 Signal(s) : Signal #1: ECD1A.ch Signal #2: ECD2B.ch  
 Acq On : 02 Feb 2019 02:25  
 Operator : SM\SJ  
 Sample : I.BLK  
 Misc :  
 ALS Vial : 2 Sample Multiplier: 1

**Instrument :**  
 ECD\_Q  
**ClientSampled :**  
 I.BLK

**Manual Integrations**  
**APPROVED**  
 Sohil  
 2/4/2019 10:21:00 AM

Integration File signal 1: autoint1.e  
 Integration File signal 2: autoint2.e  
 Quant Time: Feb 02 02:49:17 2019  
 Quant Method : Z:\pestpcbsrv\HPCHEM1\ECD\_Q\Method\PQ012419.M  
 Quant Title : GC EXTRACTABLES  
 QLast Update : Thu Jan 24 06:01:26 2019  
 Response via : Initial Calibration  
 Integrator: ChemStation

Volume Inj. : 2 µl  
 Signal #1 Phase : ZB-MR1 Signal #2 Phase: ZB-MR2  
 Signal #1 Info : 30Mx0.32mmx 0.50µ Signal #2 Info : 30M x 0.32mm x 0.25µm

Compound	RT#1	RT#2	Resp#1	Resp#2	ng/ml	ng/ml
-----						
System Monitoring Compounds						
1) SA Tetrachlo...	4.332	3.699	100.5E6	56522705	21.836	23.590m
2) SA Decachlor...	9.911	8.630	89851840	43772584	24.646m	23.268m

Target Compounds  
 -----

(f)=RT Delta > 1/2 Window (#)=Amounts differ by > 25% (m)=manual int.

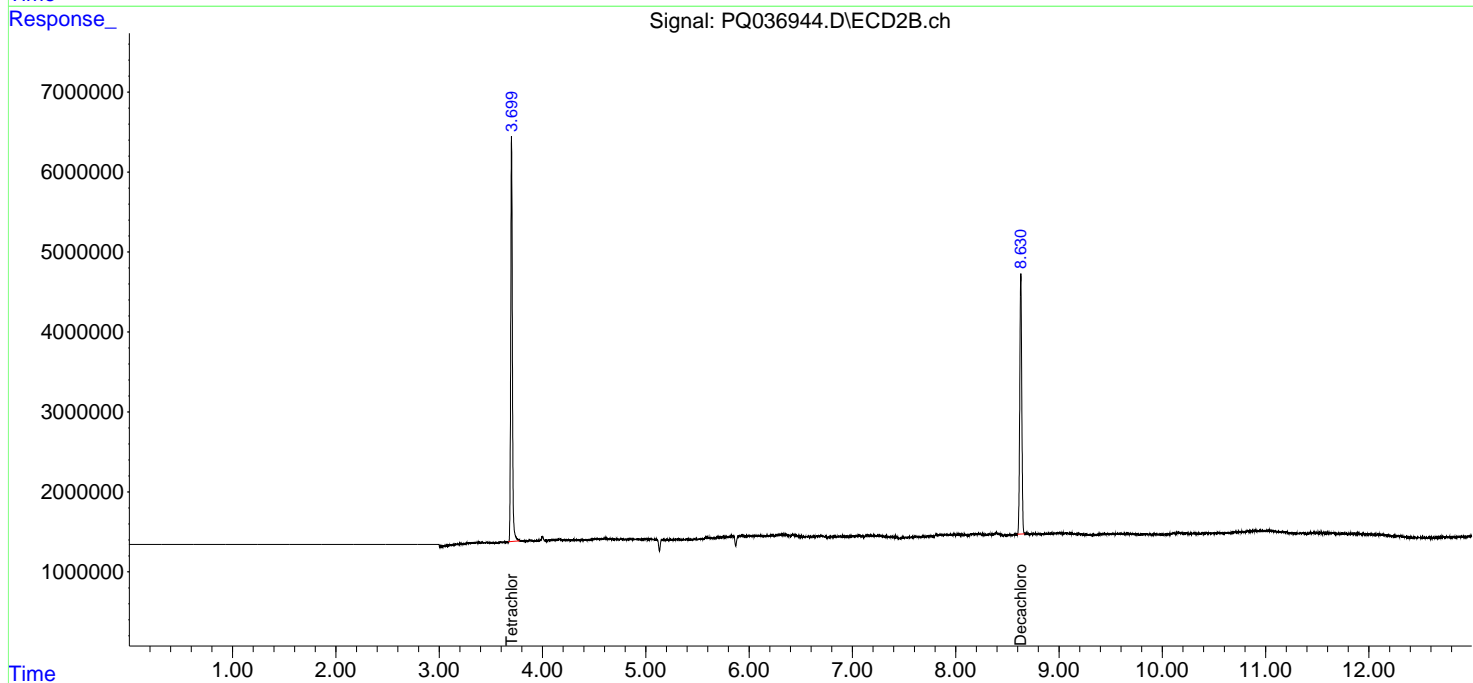
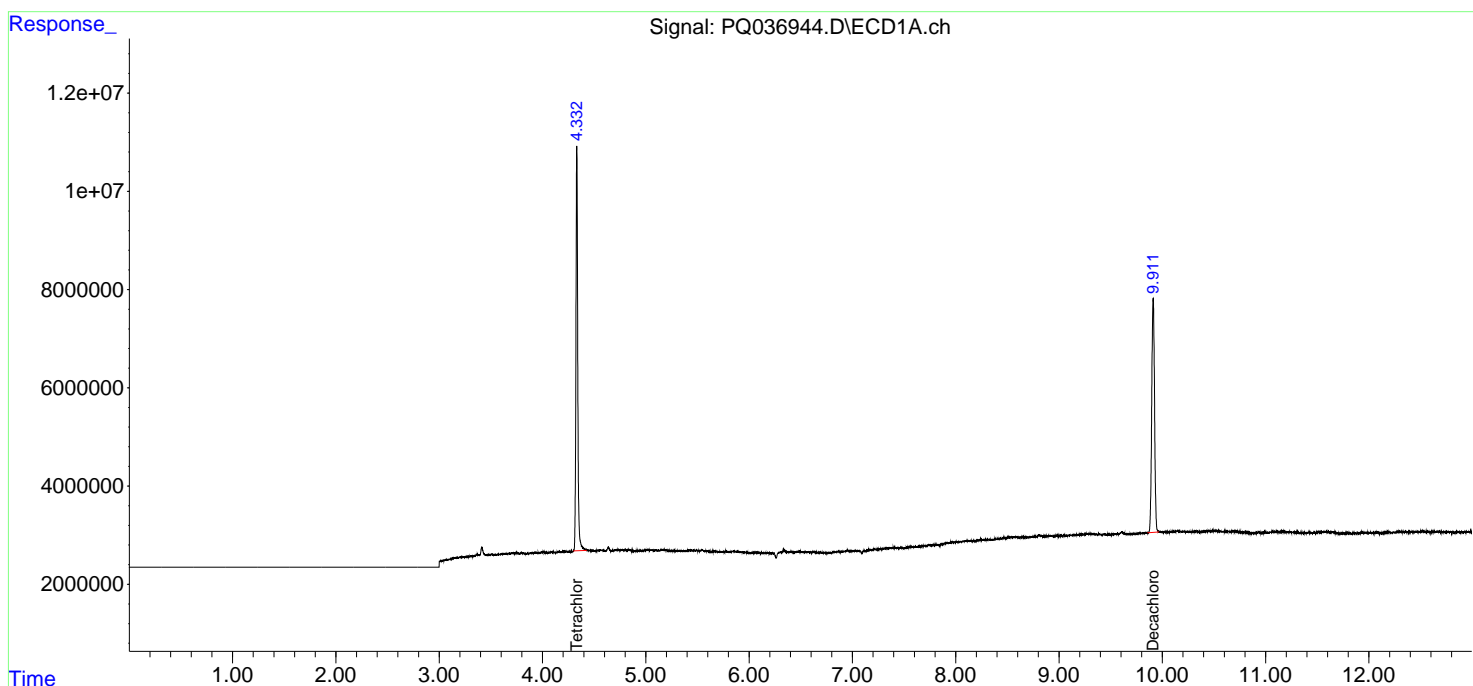
Data Path : Z:\pestpcbsrv\HPCHEM1\ECD\_Q\Data\PQ020119\  
 Data File : PQ036944.D  
 Signal(s) : Signal #1: ECD1A.ch Signal #2: ECD2B.ch  
 Acq On : 02 Feb 2019 02:25  
 Operator : SM\SJ  
 Sample : I.BLK  
 Misc :  
 ALS Vial : 2 Sample Multiplier: 1

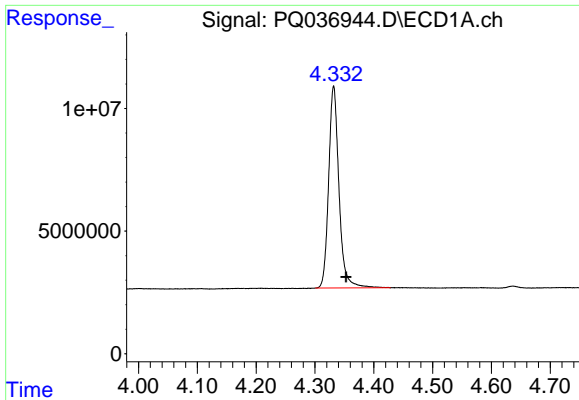
**Instrument :**  
 ECD\_Q  
**ClientSampled :**  
 I.BLK

**Manual Integrations**  
**APPROVED**  
 Sohil  
 2/4/2019 10:21:00 AM

Integration File signal 1: autoint1.e  
 Integration File signal 2: autoint2.e  
 Quant Time: Feb 02 02:49:17 2019  
 Quant Method : Z:\pestpcbsrv\HPCHEM1\ECD\_Q\Method\PQ012419.M  
 Quant Title : GC EXTRACTABLES  
 QLast Update : Thu Jan 24 06:01:26 2019  
 Response via : Initial Calibration  
 Integrator: ChemStation

Volume Inj. : 2 µl  
 Signal #1 Phase : ZB-MR1 Signal #2 Phase: ZB-MR2  
 Signal #1 Info : 30Mx0.32mmx 0.50µm Signal #2 Info : 30M x 0.32mm x 0.25µm

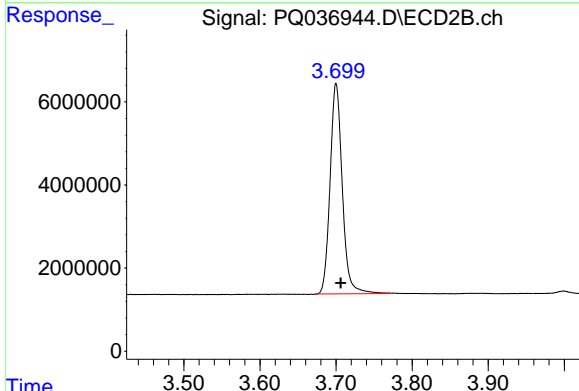




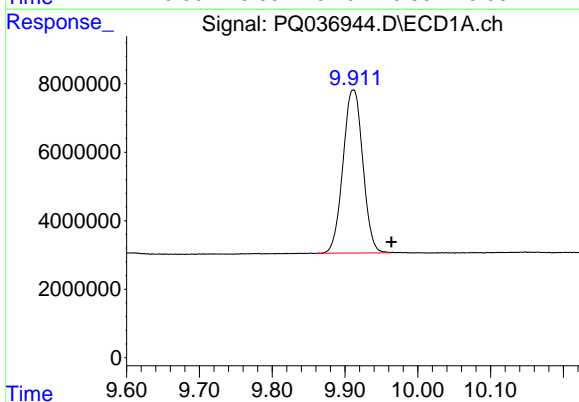
#1 Tetrachloro-m-xylene  
 R.T.: 4.332 min  
 Delta R.T.: -0.021 min  
 Response: 100507856  
 Conc: 21.84 ng/ml

Instrument :  
 ECD\_Q  
 ClientSampled :  
 I.BLK

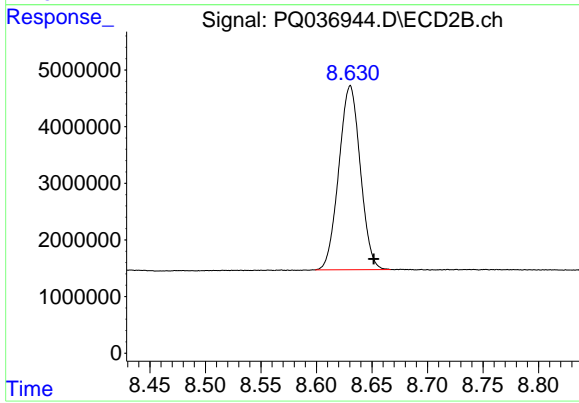
Manual Integrations  
 APPROVED  
 Sohil  
 2/4/2019 10:21:00 AM



#1 Tetrachloro-m-xylene  
 R.T.: 3.699 min  
 Delta R.T.: -0.007 min  
 Response: 56522705  
 Conc: 23.59 ng/ml m



#2 Decachlorobiphenyl  
 R.T.: 9.911 min  
 Delta R.T.: -0.053 min  
 Response: 89851840  
 Conc: 24.65 ng/ml m



#2 Decachlorobiphenyl  
 R.T.: 8.630 min  
 Delta R.T.: -0.021 min  
 Response: 43772584  
 Conc: 23.27 ng/ml m