

Data Path : Z:\pestpcbsrv\HPCHEM1\ECD\_Q\Data\PQ020419\  
 Data File : PQ036952.D  
 Signal(s) : Signal #1: ECD1A.ch Signal #2: ECD2B.ch  
 Acq On : 04 Feb 2019 10:17  
 Operator : SM\SJ  
 Sample : K1297-04  
 Misc :  
 ALS Vial : 79 Sample Multiplier: 1

**Instrument :**  
 ECD\_Q  
**ClientSampled :**  
 DUP-01-30-19

**Manual Integrations**  
**APPROVED**  
 Sohil  
 2/5/2019 12:08:06 PM

Integration File signal 1: autoint1.e  
 Integration File signal 2: autoint2.e  
 Quant Time: Feb 04 10:35:00 2019  
 Quant Method : Z:\pestpcbsrv\HPCHEM1\ECD\_Q\Method\PQ012419.M  
 Quant Title : GC EXTRACTABLES  
 QLast Update : Thu Jan 24 06:01:26 2019  
 Response via : Initial Calibration  
 Integrator: ChemStation

Volume Inj. : 2 µl  
 Signal #1 Phase : ZB-MR1 Signal #2 Phase: ZB-MR2  
 Signal #1 Info : 30Mx0.32mmx 0.50µ Signal #2 Info : 30M x 0.32mm x 0.25µm

Compound	RT#1	RT#2	Resp#1	Resp#2	ng/ml	ng/ml
-----						
System Monitoring Compounds						
1) SA Tetrachlo...	4.331	3.698	64699165	33869428	14.056	14.136m
2) SA Decachlor...	9.914	8.631	43996306	21025158	12.068m	11.176m

Target Compounds

(f)=RT Delta > 1/2 Window (#)=Amounts differ by > 25% (m)=manual int.

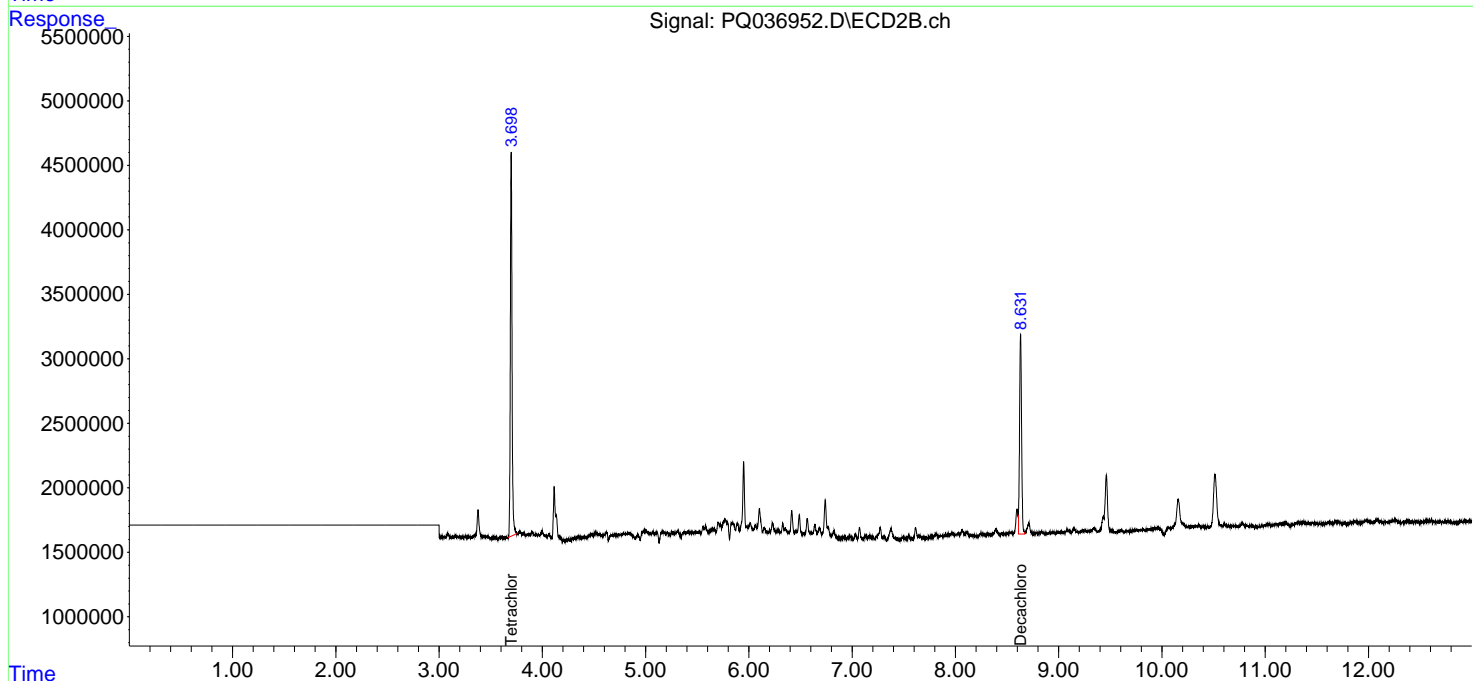
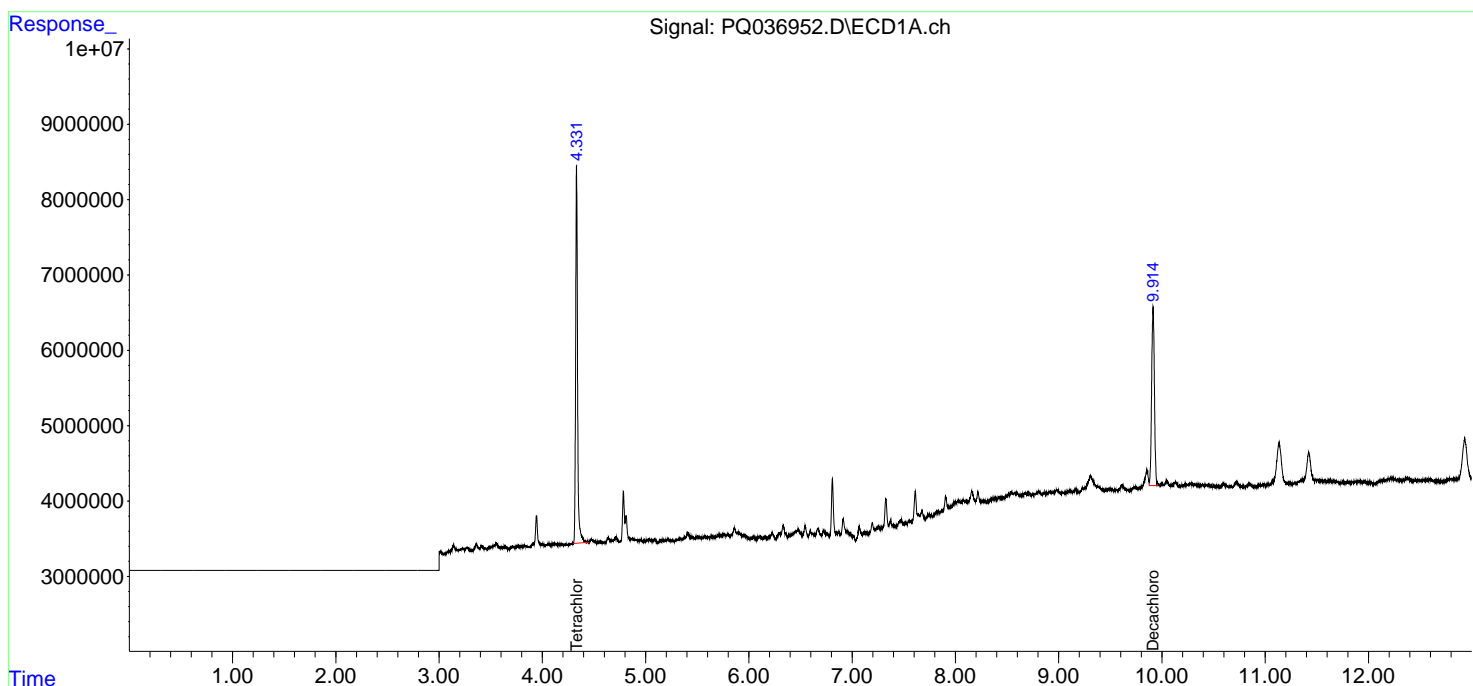
Data Path : Z:\pestpcbsrv\HPCHEM1\ECD\_Q\Data\PQ020419\  
 Data File : PQ036952.D  
 Signal(s) : Signal #1: ECD1A.ch Signal #2: ECD2B.ch  
 Acq On : 04 Feb 2019 10:17  
 Operator : SM\SJ  
 Sample : K1297-04  
 Misc :  
 ALS Vial : 79 Sample Multiplier: 1

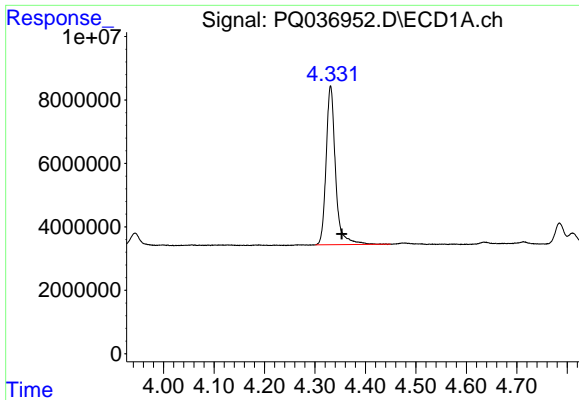
**Instrument :**  
 ECD\_Q  
**Client Sampled :**  
 DUP-01-30-19

**Manual Integrations**  
**APPROVED**  
 Sohil  
 2/5/2019 12:08:06 PM

Integration File signal 1: autoint1.e  
 Integration File signal 2: autoint2.e  
 Quant Time: Feb 04 10:35:00 2019  
 Quant Method : Z:\pestpcbsrv\HPCHEM1\ECD\_Q\Method\PQ012419.M  
 Quant Title : GC EXTRACTABLES  
 QLast Update : Thu Jan 24 06:01:26 2019  
 Response via : Initial Calibration  
 Integrator: ChemStation

Volume Inj. : 2 µl  
 Signal #1 Phase : ZB-MR1 Signal #2 Phase: ZB-MR2  
 Signal #1 Info : 30Mx0.32mmx 0.50µm Signal #2 Info : 30M x 0.32mm x 0.25µm

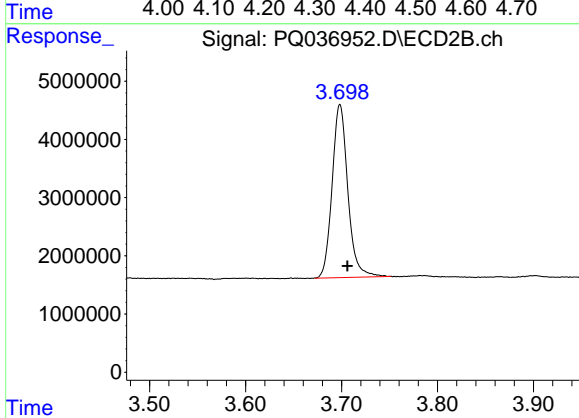




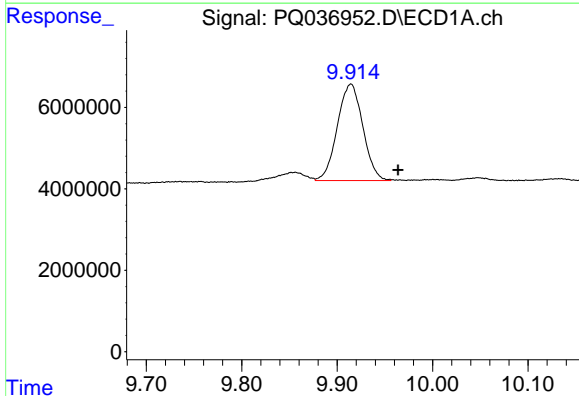
#1 Tetrachloro-m-xylene  
 R.T.: 4.331 min  
 Delta R.T.: -0.022 min  
 Response: 64699165  
 Conc: 14.06 ng/ml

Instrument :  
 ECD\_Q  
 ClientSampled :  
 DUP-01-30-19

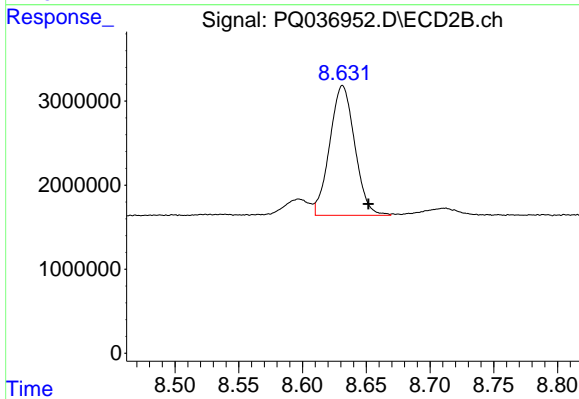
Manual Integrations  
 APPROVED  
 Sohil  
 2/5/2019 12:08:06 PM



#1 Tetrachloro-m-xylene  
 R.T.: 3.698 min  
 Delta R.T.: -0.008 min  
 Response: 33869428  
 Conc: 14.14 ng/ml m



#2 Decachlorobiphenyl  
 R.T.: 9.914 min  
 Delta R.T.: -0.050 min  
 Response: 43996306  
 Conc: 12.07 ng/ml m



#2 Decachlorobiphenyl  
 R.T.: 8.631 min  
 Delta R.T.: -0.021 min  
 Response: 21025158  
 Conc: 11.18 ng/ml m