

Data Path : Z:\pestpcbsrv\HPCHEM1\ECD\_Q\Data\PQ020619\  
 Data File : PQ036990.D  
 Signal(s) : Signal #1: ECD1A.ch Signal #2: ECD2B.ch  
 Acq On : 06 Feb 2019 08:54  
 Operator : SM\SJ  
 Sample : AR1660ICC750  
 Misc :  
 ALS Vial : 22 Sample Multiplier: 1

Instrument :  
 ECD\_Q  
 ClientSampleId :  
 AR1660ICC750

Integration File signal 1: autoint1.e  
 Integration File signal 2: autoint2.e  
 Quant Time: Feb 06 12:46:38 2019  
 Quant Method : Z:\pestpcbsrv\HPCHEM1\ECD\_Q\Method\PQ020619.M  
 Quant Title : GC EXTRACTABLES  
 QLast Update : Wed Feb 06 12:44:25 2019  
 Response via : Initial Calibration  
 Integrator: ChemStation

Volume Inj. : 2 µl  
 Signal #1 Phase : ZB-MR2 Signal #2 Phase: ZB-MR2  
 Signal #1 Info : 30Mx0.32mmx 0.50µ Signal #2 Info : 30M x 0.32mm x 0.25µm

Compound	RT#1	RT#2	Resp#1	Resp#2	ng/ml	ng/ml
-----						
System Monitoring Compounds						
1) SA Tetrachlo...	4.323	3.694	330.6E6	169.3E6	74.560	73.488
2) SA Decachlor...	9.893	8.623	300.0E6	132.1E6	73.338	71.820
Target Compounds						
3) L1 AR-1016-1	5.478	4.763	97220210	50890707	720.294	720.318
4) L1 AR-1016-2	5.498	4.780	150.2E6	78535457	749.940	730.242
5) L1 AR-1016-3	5.559	4.955	85383260	39030266	735.730	722.847
6) L1 AR-1016-4	5.659	4.994	71691209	31473893	740.895	715.439
7) L1 AR-1016-5	5.947	5.206	69924988	40542624	733.461	718.707
31) L7 AR-1260-1	7.057	6.221	140.9E6	79126340	731.452	727.426
32) L7 AR-1260-2	7.312	6.408	183.6E6	96869227	737.323	725.602
33) L7 AR-1260-3	7.667	6.560	117.0E6	90221552	731.163	731.481
34) L7 AR-1260-4	7.896	7.025	133.4E6	60868000	734.219	719.719
35) L7 AR-1260-5	8.207	7.267	287.1E6	151.0E6	741.280	728.150
-----						

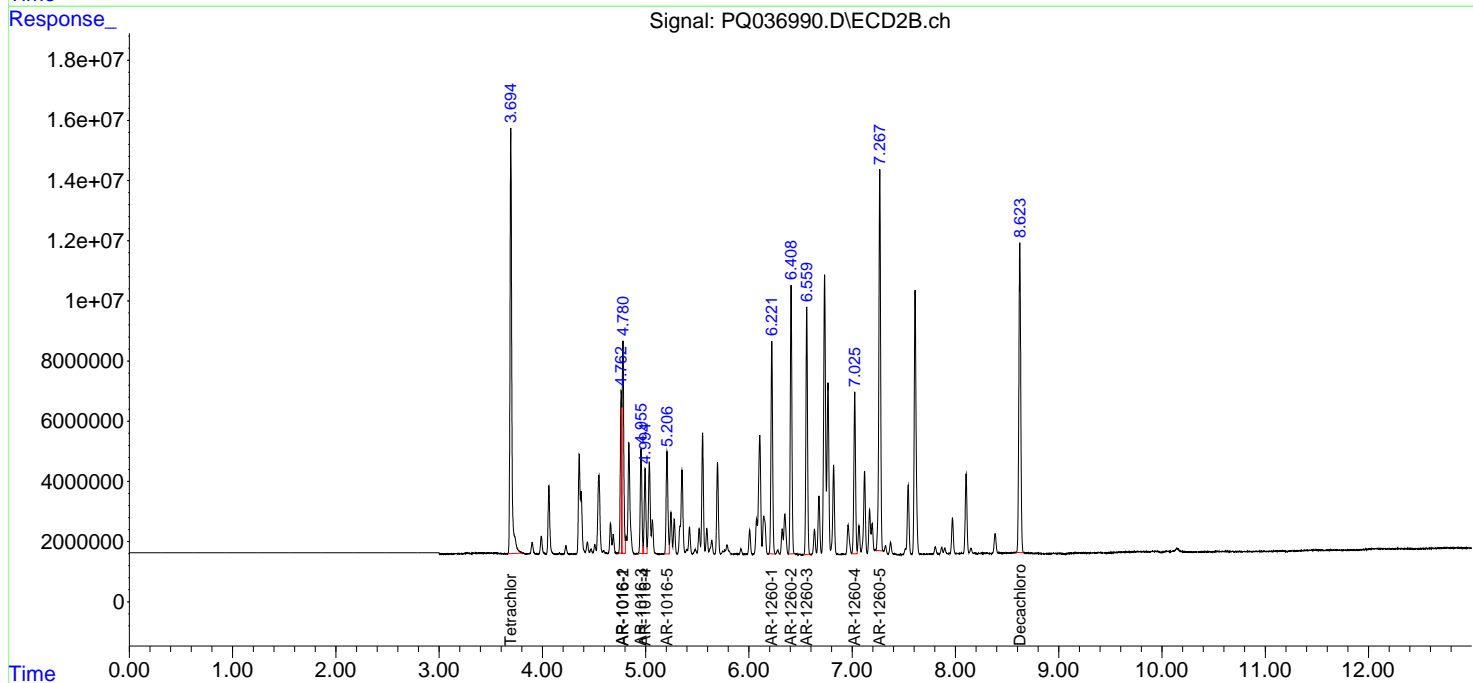
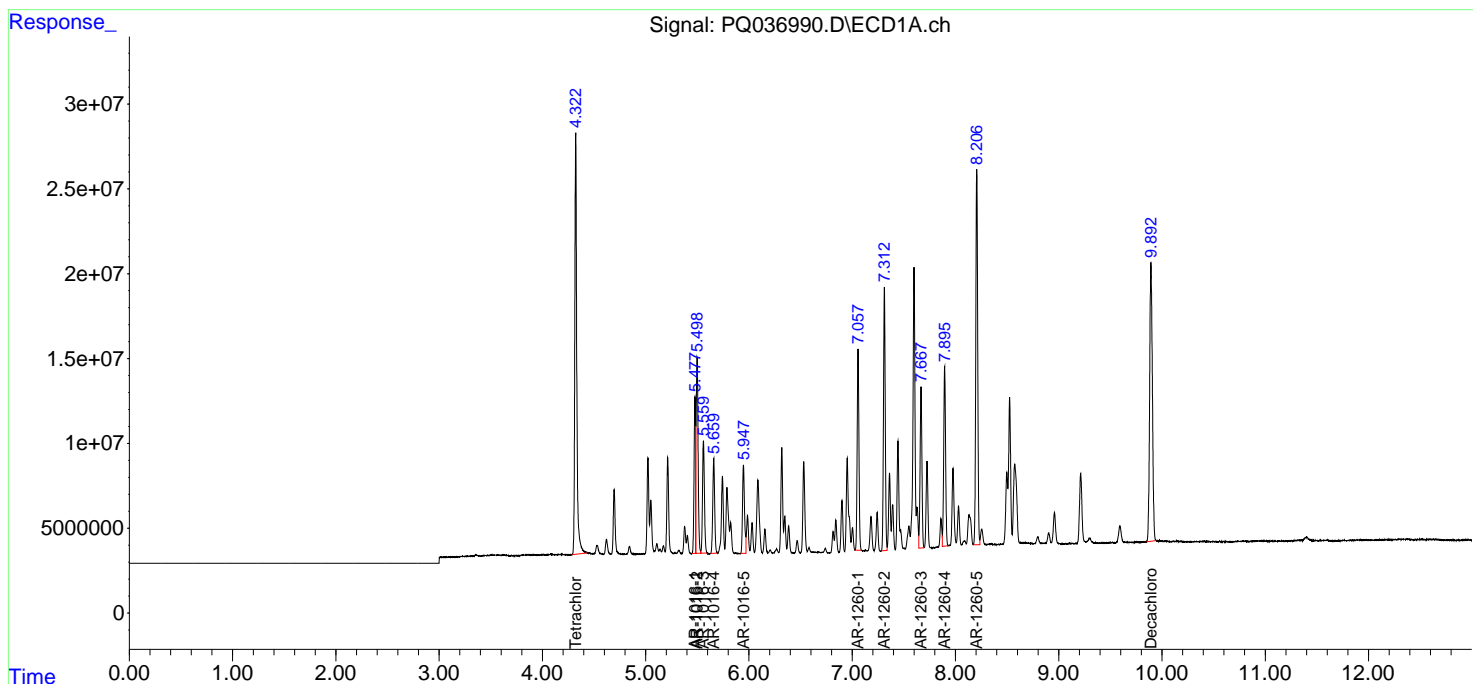
(f)=RT Delta > 1/2 Window (#)=Amounts differ by > 25% (m)=manual int.

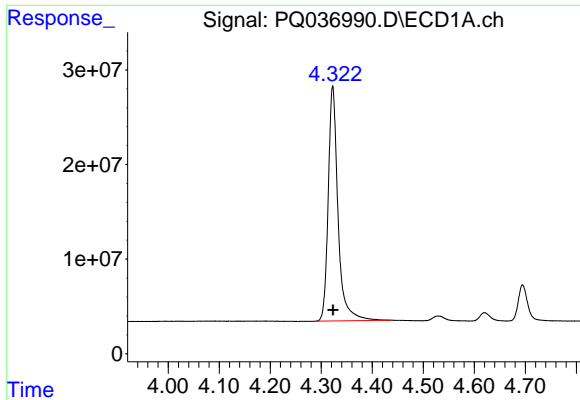
Data Path : Z:\pestpcbsrv\HPCHEM1\ECD\_Q\Data\PQ020619\  
 Data File : PQ036990.D  
 Signal(s) : Signal #1: ECD1A.ch Signal #2: ECD2B.ch  
 Acq On : 06 Feb 2019 08:54  
 Operator : SM\SJ  
 Sample : AR1660ICC750  
 Misc :  
 ALS Vial : 22 Sample Multiplier: 1

Instrument :  
 ECD\_Q  
 ClientSampleID :  
 AR1660ICC750

Integration File signal 1: autoint1.e  
 Integration File signal 2: autoint2.e  
 Quant Time: Feb 06 12:46:38 2019  
 Quant Method : Z:\pestpcbsrv\HPCHEM1\ECD\_Q\Method\PQ020619.M  
 Quant Title : GC EXTRACTABLES  
 QLast Update : Wed Feb 06 12:44:25 2019  
 Response via : Initial Calibration  
 Integrator: ChemStation

Volume Inj. : 2 µl  
 Signal #1 Phase : ZB-MR1 Signal #2 Phase: ZB-MR2  
 Signal #1 Info : 30Mx0.32mmx 0.50µm Signal #2 Info : 30M x 0.32mm x 0.25µm

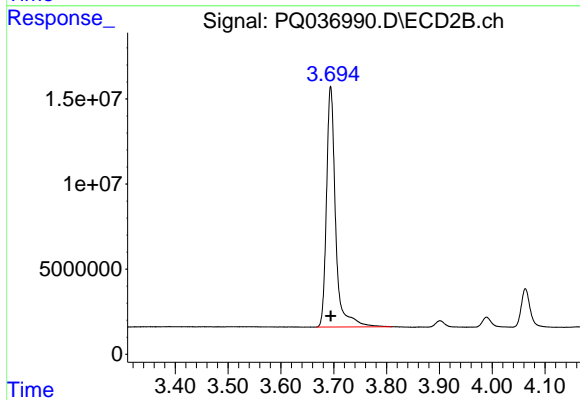




#1 Tetrachloro-m-xylene

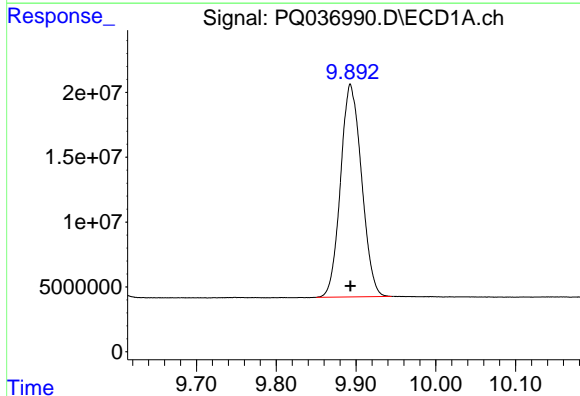
R.T.: 4.323 min  
 Delta R.T.: 0.000 min  
 Response: 330617018  
 Conc: 74.56 ng/ml

Instrument :  
 ECD\_Q  
 ClientSampleId :  
 AR1660ICC750



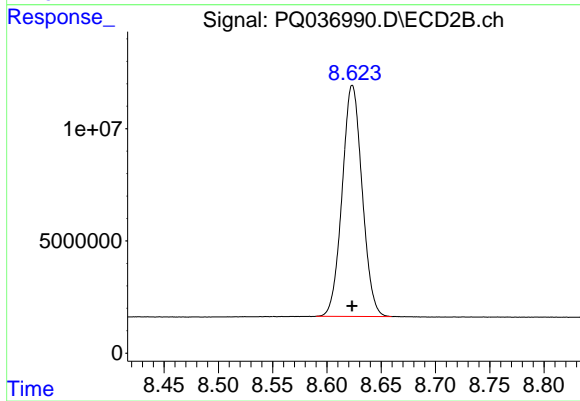
#1 Tetrachloro-m-xylene

R.T.: 3.694 min  
 Delta R.T.: 0.000 min  
 Response: 169261718  
 Conc: 73.49 ng/ml



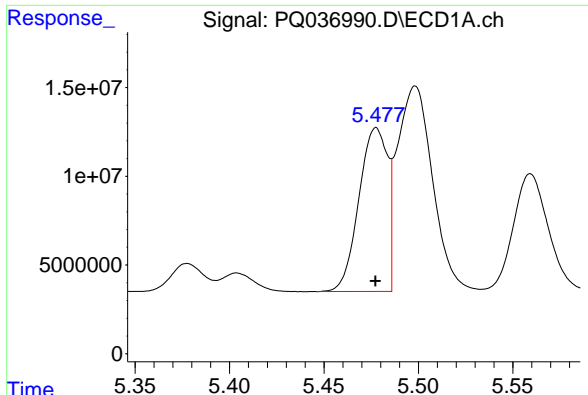
#2 Decachlorobiphenyl

R.T.: 9.893 min  
 Delta R.T.: 0.000 min  
 Response: 300008906  
 Conc: 73.34 ng/ml



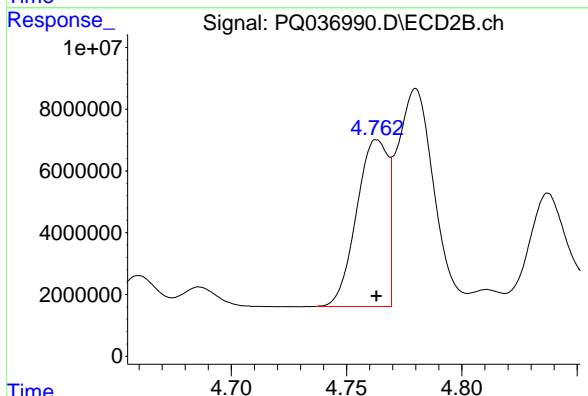
#2 Decachlorobiphenyl

R.T.: 8.623 min  
 Delta R.T.: 0.000 min  
 Response: 132063830  
 Conc: 71.82 ng/ml

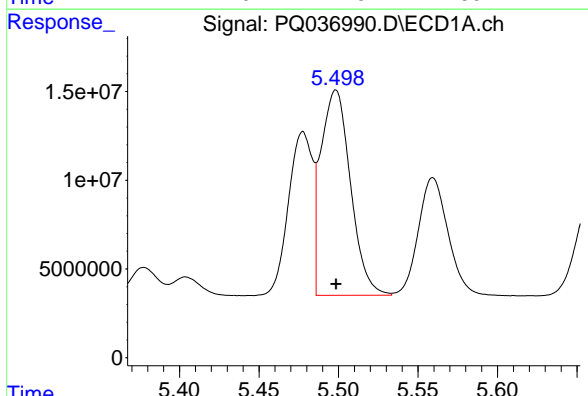


#3 AR-1016-1  
 R.T.: 5.478 min  
 Delta R.T.: 0.000 min  
 Response: 97220210  
 Conc: 720.29 ng/ml

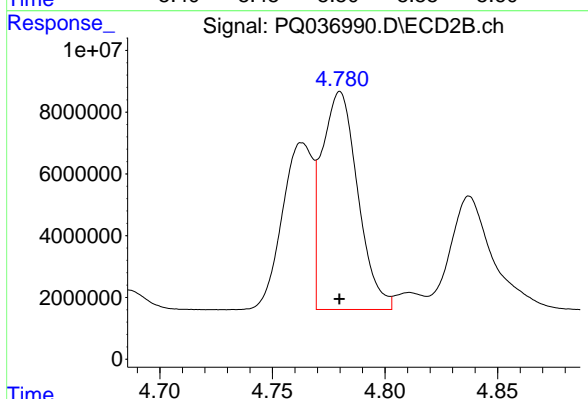
Instrument :  
 ECD\_Q  
 ClientSampled :  
 AR1660ICC750



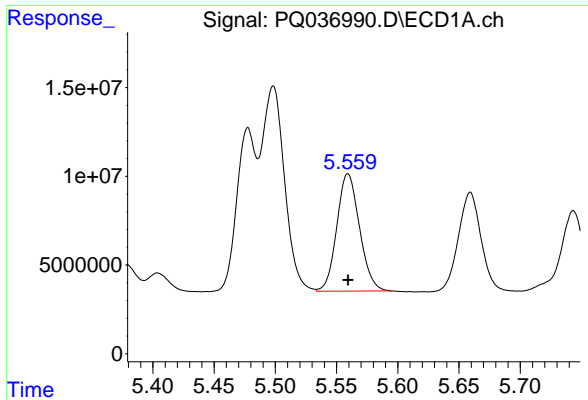
#3 AR-1016-1  
 R.T.: 4.763 min  
 Delta R.T.: 0.000 min  
 Response: 50890707  
 Conc: 720.32 ng/ml



#4 AR-1016-2  
 R.T.: 5.498 min  
 Delta R.T.: 0.000 min  
 Response: 150220245  
 Conc: 749.94 ng/ml

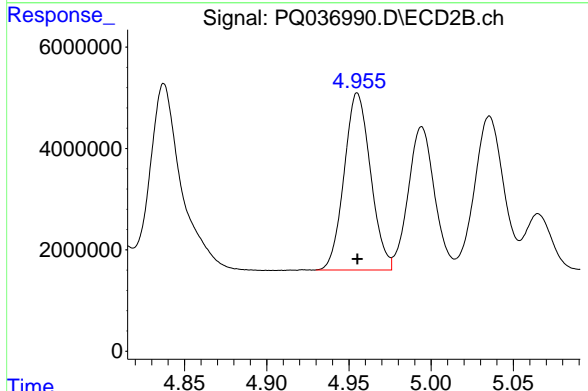


#4 AR-1016-2  
 R.T.: 4.780 min  
 Delta R.T.: 0.000 min  
 Response: 78535457  
 Conc: 730.24 ng/ml

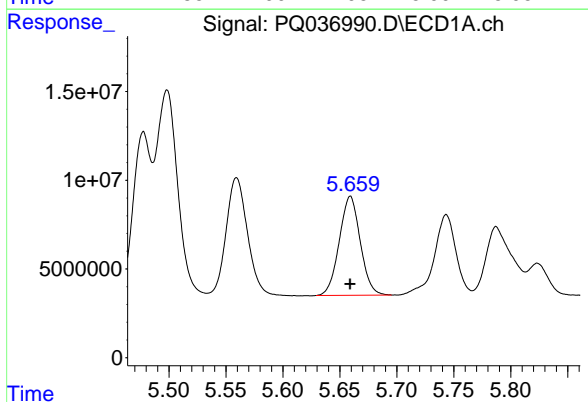


#5 AR-1016-3  
 R.T.: 5.559 min  
 Delta R.T.: 0.000 min  
 Response: 85383260  
 Conc: 735.73 ng/ml

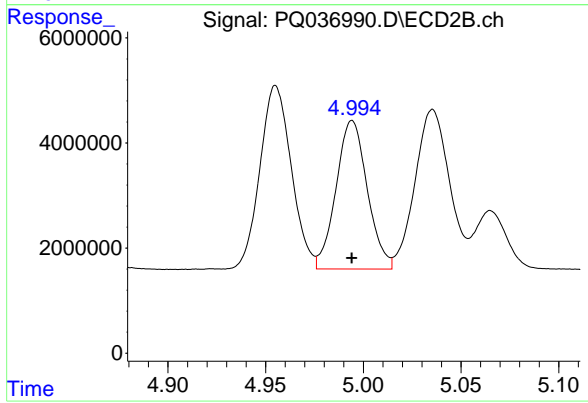
**Instrument :**  
 ECD\_Q  
**ClientSampleId :**  
 AR1660ICC750



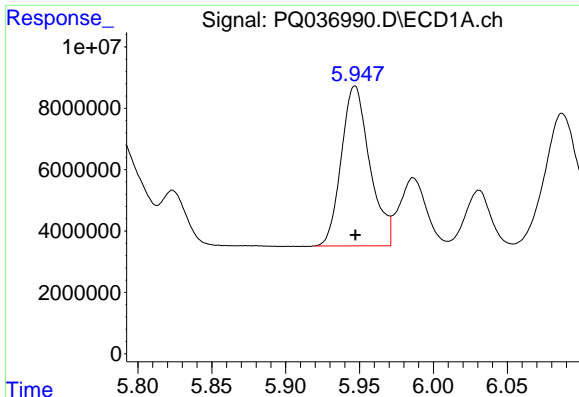
#5 AR-1016-3  
 R.T.: 4.955 min  
 Delta R.T.: 0.000 min  
 Response: 39030266  
 Conc: 722.85 ng/ml



#6 AR-1016-4  
 R.T.: 5.659 min  
 Delta R.T.: 0.000 min  
 Response: 71691209  
 Conc: 740.89 ng/ml



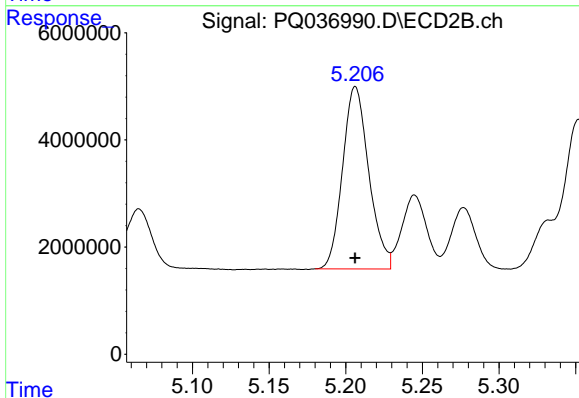
#6 AR-1016-4  
 R.T.: 4.994 min  
 Delta R.T.: 0.000 min  
 Response: 31473893  
 Conc: 715.44 ng/ml



#7 AR-1016-5

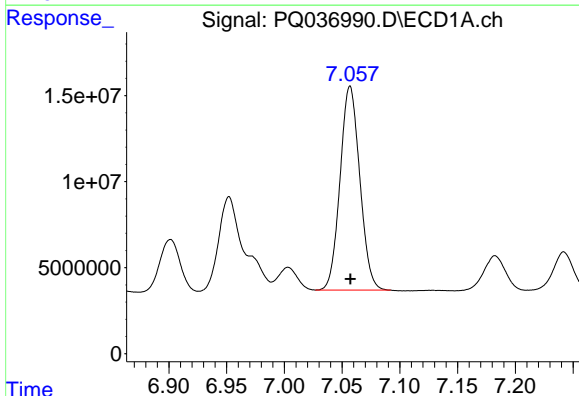
R.T.: 5.947 min  
 Delta R.T.: 0.000 min  
 Response: 69924988  
 Conc: 733.46 ng/ml

Instrument :  
 ECD\_Q  
 ClientSampleId :  
 AR1660ICC750



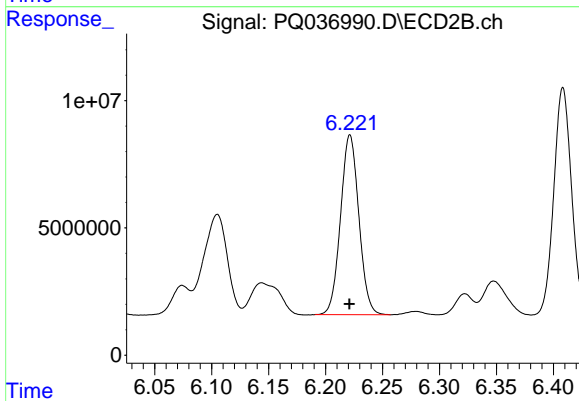
#7 AR-1016-5

R.T.: 5.206 min  
 Delta R.T.: 0.000 min  
 Response: 40542624  
 Conc: 718.71 ng/ml



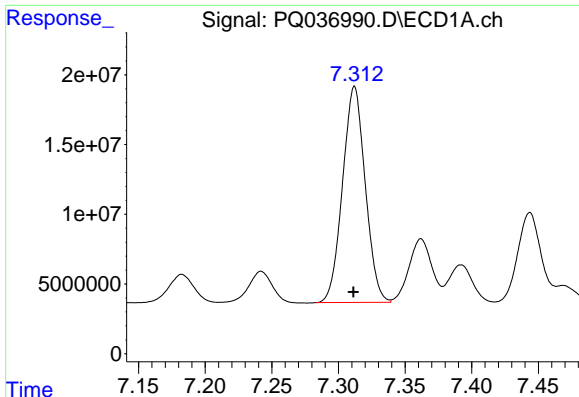
#31 AR-1260-1

R.T.: 7.057 min  
 Delta R.T.: 0.000 min  
 Response: 140933914  
 Conc: 731.45 ng/ml



#31 AR-1260-1

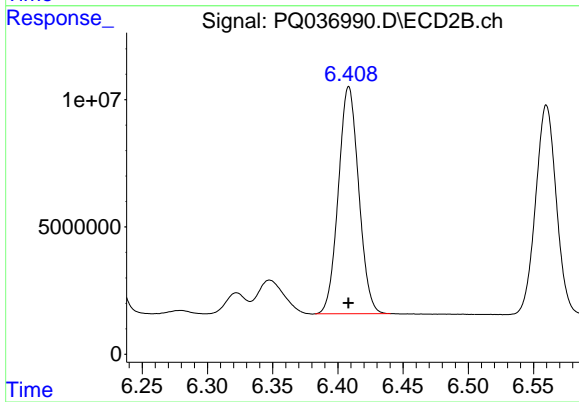
R.T.: 6.221 min  
 Delta R.T.: 0.000 min  
 Response: 79126340  
 Conc: 727.43 ng/ml



#32 AR-1260-2

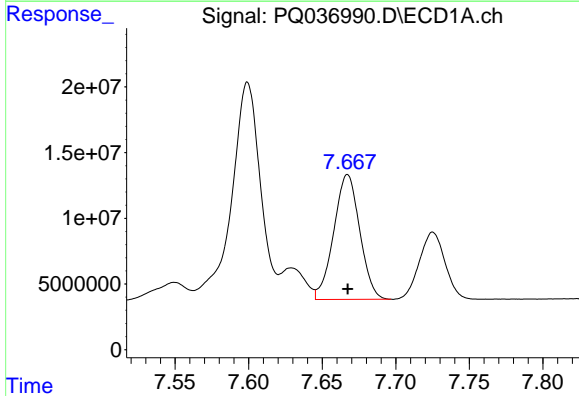
R.T.: 7.312 min  
 Delta R.T.: 0.000 min  
 Response: 183648229  
 Conc: 737.32 ng/ml

Instrument :  
 ECD\_Q  
 ClientSampleId :  
 AR1660ICC750



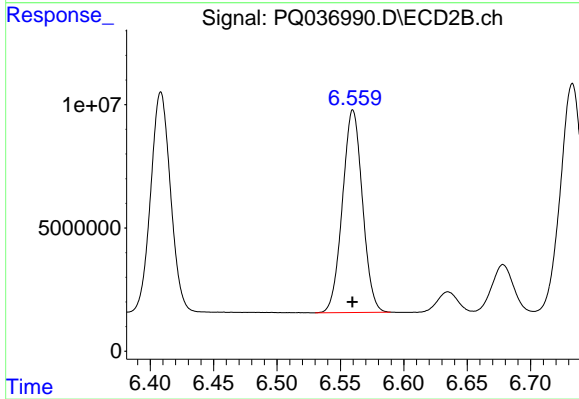
#32 AR-1260-2

R.T.: 6.408 min  
 Delta R.T.: 0.000 min  
 Response: 96869227  
 Conc: 725.60 ng/ml



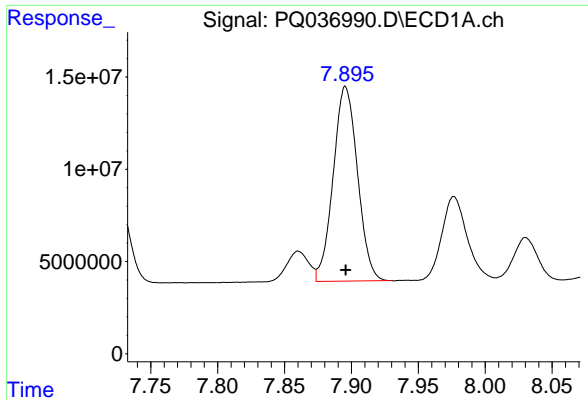
#33 AR-1260-3

R.T.: 7.667 min  
 Delta R.T.: 0.000 min  
 Response: 117044899  
 Conc: 731.16 ng/ml



#33 AR-1260-3

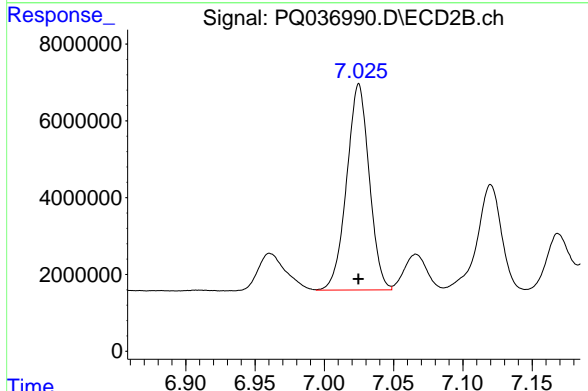
R.T.: 6.560 min  
 Delta R.T.: 0.000 min  
 Response: 90221552  
 Conc: 731.48 ng/ml



#34 AR-1260-4

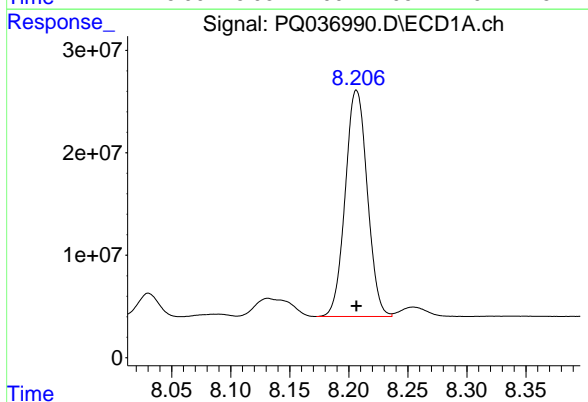
R.T.: 7.896 min  
Delta R.T.: 0.000 min  
Response: 133448970  
Conc: 734.22 ng/ml

Instrument :  
ECD\_Q  
ClientSampleId :  
AR1660ICC750



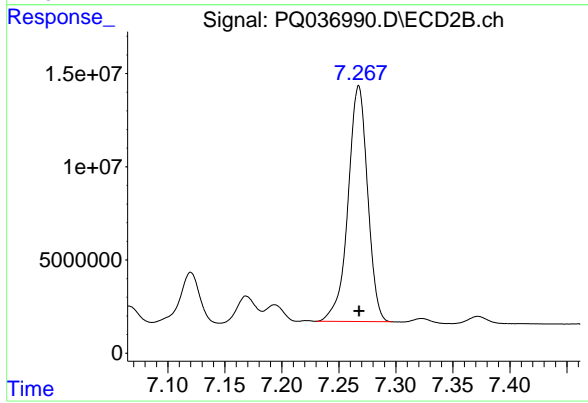
#34 AR-1260-4

R.T.: 7.025 min  
Delta R.T.: 0.000 min  
Response: 60868000  
Conc: 719.72 ng/ml



#35 AR-1260-5

R.T.: 8.207 min  
Delta R.T.: 0.000 min  
Response: 287120999  
Conc: 741.28 ng/ml



#35 AR-1260-5

R.T.: 7.267 min  
Delta R.T.: 0.000 min  
Response: 150969148  
Conc: 728.15 ng/ml