

Data Path : Z:\pestpcbsrv\HPCHEM1\ECD_Q\Data\PQ020719\
 Data File : PQ037029.D
 Signal(s) : Signal #1: ECD1A.ch Signal #2: ECD2B.ch
 Acq On : 07 Feb 2019 18:50
 Operator : SM\SJ
 Sample : K1379-01
 Misc :
 ALS Vial : 22 Sample Multiplier: 1

Instrument :
 ECD_Q
 ClientSampled :
 HR-6A

Integration File signal 1: autoint1.e
 Integration File signal 2: autoint2.e
 Quant Time: Feb 08 08:51:20 2019
 Quant Method : Z:\pestpcbsrv\HPCHEM1\ECD_Q\Method\PQ020619.M
 Quant Title : GC EXTRACTABLES
 QLast Update : Wed Feb 06 18:32:04 2019
 Response via : Initial Calibration
 Integrator: ChemStation

Volume Inj. : 2 µl
 Signal #1 Phase : ZB-MR1 Signal #2 Phase: ZB-MR2
 Signal #1 Info : 30Mx0.32mmx 0.50µ Signal #2 Info : 30M x 0.32mm x 0.25µm

Compound	RT#1	RT#2	Resp#1	Resp#2	ng/ml	ng/ml
System Monitoring Compounds						
1) SA Tetrachlo...	4.322	3.699	68112402	50076493	15.330	21.683 #
2) SA Decachlor...	9.885	8.624	59302388	26049987	14.383	13.865
Target Compounds						
3) L1 AR-1016-1	5.471	0.000	1498026	0	10.879	N.D. #
4) L1 AR-1016-2	5.499	0.000	1881210	0	8.995	N.D. #
5) L1 AR-1016-3	5.499	4.997	1881210	4009568	15.724	72.795 #
6) L1 AR-1016-4	0.000	4.997	0	4009568	N.D.	89.507 #
7) L1 AR-1016-5	5.944	5.209	4139189	2103521	42.204	36.226
9) L2 AR-1221-2	4.624	0.000	2224776	0	42.154	N.D. #
10) L2 AR-1221-3	4.672	0.000	7755601	0	41.987	N.D. #
11) L3 AR-1232-1	4.672	0.000	7755601	0	76.232	N.D. #
12) L3 AR-1232-2	5.210	0.000	3140416	0	60.726	N.D. #
13) L3 AR-1232-3	5.499	4.997	1881210	4009568	17.450	135.391 #
14) L3 AR-1232-4	0.000	4.997	0	4009568	N.D.	151.725 #
15) L3 AR-1232-5	5.740	5.209	3758788	2103521	100.228	73.553 #
16) L4 AR-1242-1	5.471	0.000	1498026	0	12.053	N.D. #
17) L4 AR-1242-2	5.499	0.000	1881210	0	9.844	N.D. #
18) L4 AR-1242-3	5.499	4.997	1881210	4009568	17.150	78.512 #
19) L4 AR-1242-4	0.000	4.997	0	4009568	N.D.	80.525 #
20) L4 AR-1242-5	6.384	5.553	4804299	10988382	48.532	185.851 #
21) L5 AR-1248-1	5.471	0.000	1498026	0	17.223	N.D. #
22) L5 AR-1248-2	5.740	4.997	3758788	4009568	30.410	60.838 #
23) L5 AR-1248-3	5.944	4.997	4139189	4009568	30.035	60.145 #
24) L5 AR-1248-4	6.343	5.209	4935317	2103521	30.595	26.022
25) L5 AR-1248-5	6.384	5.626	4804299	1728861	31.381	21.867 #
26) L6 AR-1254-1	6.314	5.553	15694934	10988382	36.007	32.746
27) L6 AR-1254-2	6.531	5.698	30340811	8722777	44.739	31.102 #
28) L6 AR-1254-3	6.898	6.098	37974757	25356834	54.144	55.665
29) L6 AR-1254-4	7.180	6.324	13150664	9095184	24.749	32.127 #
30) L6 AR-1254-5	7.595	6.735	35116053	21061098	64.574	56.933
31) L7 AR-1260-1	7.053	6.222	19670510	10217523	99.978	91.624
32) L7 AR-1260-2	7.310	6.411	32338270	12369182	128.079	90.981 #
33) L7 AR-1260-3	7.661	6.561	11615727	12214741	72.517	98.205 #
34) L7 AR-1260-4	7.890	7.025	19592881	5123872	108.059	60.466 #
35) L7 AR-1260-5	8.202	7.268	19276887	12396128	50.300	59.956
36) L8 AR-1262-1	7.661	6.765	11615727	7540187	39.287	46.442
37) L8 AR-1262-2	8.202	7.268	19276887	12396128	36.055	43.031
38) L8 AR-1262-3	8.492	7.544	8661524	5383626	37.530	46.570
39) L8 AR-1262-4	8.579	7.610	11614397	11710000	43.049	55.980 #
40) L8 AR-1262-5	9.207	8.104	9477186	3169155	50.308	34.133 #
41) L9 AR-1268-1	8.492	7.544	8661524	5383626	12.940	15.838
42) L9 AR-1268-2	8.579	7.610	11614397	11710000	18.706	37.847 #

Data Path : Z:\pestpcbsrv\HPCHEM1\ECD_Q\Data\PQ020719\
 Data File : PQ037029.D
 Signal(s) : Signal #1: ECD1A.ch Signal #2: ECD2B.ch
 Acq On : 07 Feb 2019 18:50
 Operator : SM\SJ
 Sample : K1379-01
 Misc :
 ALS Vial : 22 Sample Multiplier: 1

Instrument :
 ECD_Q
 ClientSampleId :
 HR-6A

Integration File signal 1: autoint1.e
 Integration File signal 2: autoint2.e
 Quant Time: Feb 08 08:51:20 2019
 Quant Method : Z:\pestpcbsrv\HPCHEM1\ECD_Q\Method\PQ020619.M
 Quant Title : GC EXTRACTABLES
 QLast Update : Wed Feb 06 18:32:04 2019
 Response via : Initial Calibration
 Integrator: ChemStation

Volume Inj. : 2 µl
 Signal #1 Phase : ZB-MR1 Signal #2 Phase: ZB-MR2
 Signal #1 Info : 30Mx0.32mmx 0.50µ Signal #2 Info : 30M x 0.32mm x 0.25µm

	Compound	RT#1	RT#2	Resp#1	Resp#2	ng/ml	ng/ml
43)	L9 AR-1268-3	8.790	7.806	1749580	1077101	3.187	4.211 #
44)	L9 AR-1268-4	9.207	8.104	9477186	3169155	45.775	30.270 #
45)	L9 AR-1268-5	9.585	8.385	7800802	3788335	4.667	4.692

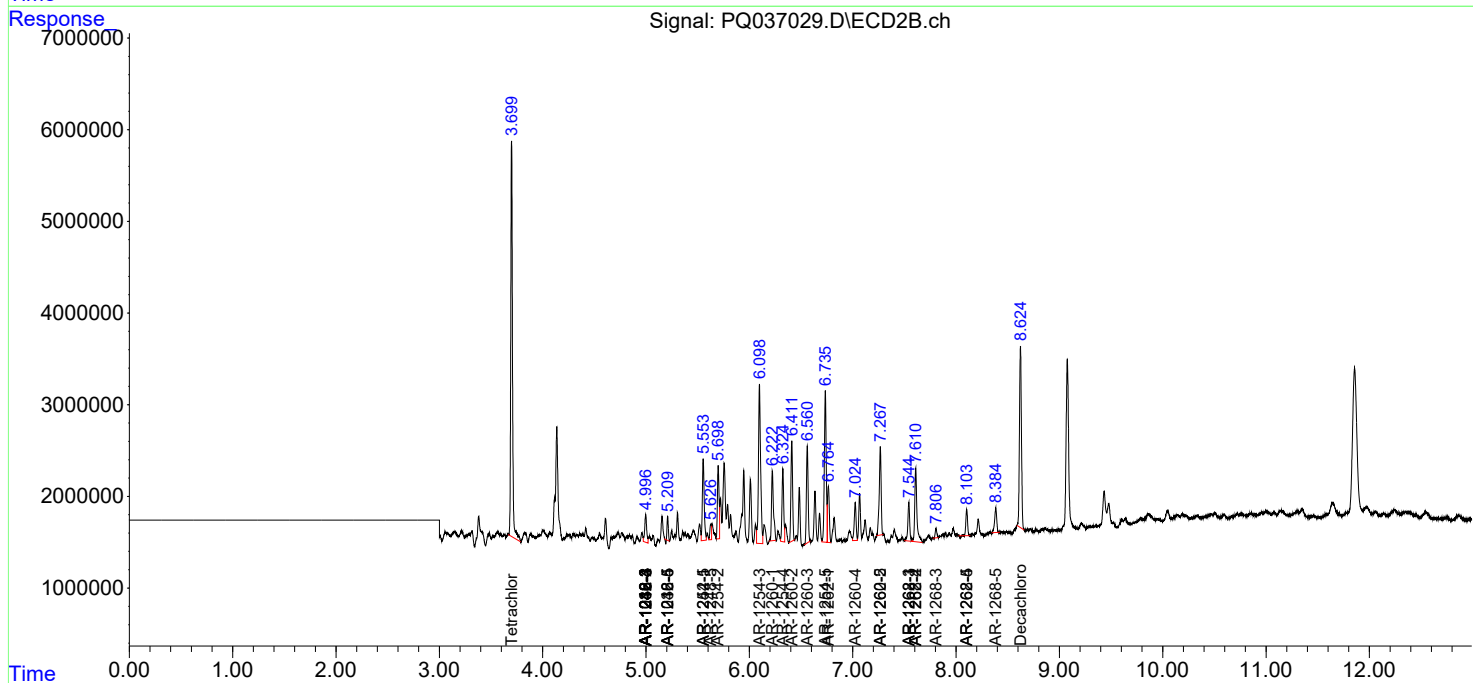
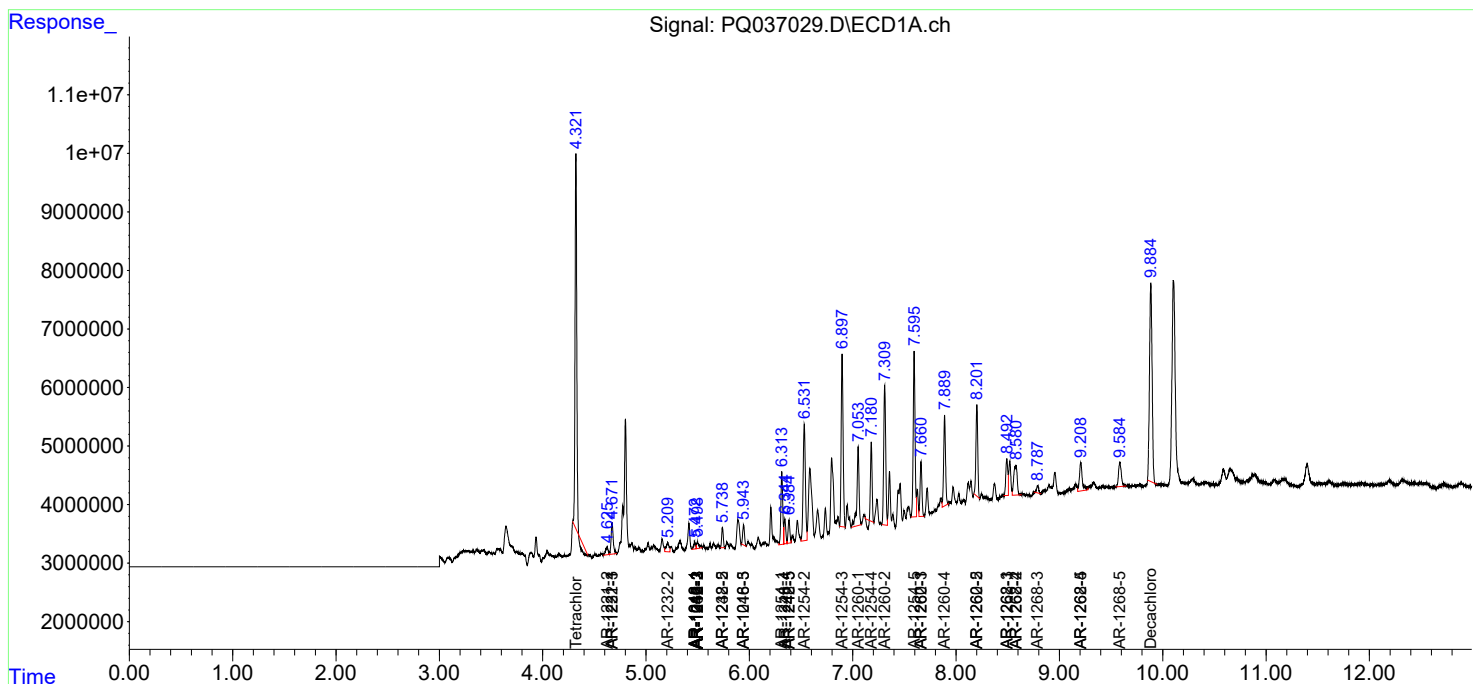
(f)=RT Delta > 1/2 Window (#)=Amounts differ by > 25% (m)=manual int.

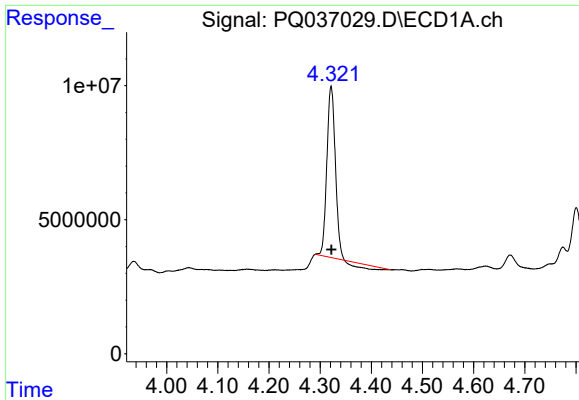
Data Path : Z:\pestpcbsrv\HPCHEM1\ECD_Q\Data\PQ020719\
 Data File : PQ037029.D
 Signal(s) : Signal #1: ECD1A.ch Signal #2: ECD2B.ch
 Acq On : 07 Feb 2019 18:50
 Operator : SM\SJ
 Sample : K1379-01
 Misc :
 ALS Vial : 22 Sample Multiplier: 1

Instrument :
 ECD_Q
 ClientSampled :
 HR-6A

Integration File signal 1: autoint1.e
 Integration File signal 2: autoint2.e
 Quant Time: Feb 08 08:51:20 2019
 Quant Method : Z:\pestpcbsrv\HPCHEM1\ECD_Q\Method\PQ020619.M
 Quant Title : GC EXTRACTABLES
 QLast Update : Wed Feb 06 18:32:04 2019
 Response via : Initial Calibration
 Integrator: ChemStation

Volume Inj. : 2 µl
 Signal #1 Phase : ZB-MR1 Signal #2 Phase: ZB-MR2
 Signal #1 Info : 30Mx0.32mmx 0.50µ Signal #2 Info : 30M x 0.32mm x 0.25µm

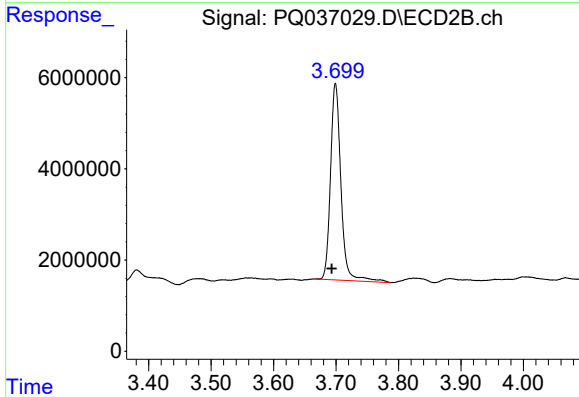




#1 Tetrachloro-m-xylene

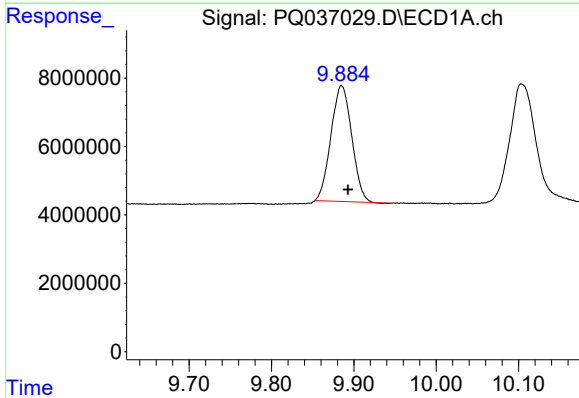
R.T.: 4.322 min
 Delta R.T.: 0.000 min
 Response: 68112402
 Conc: 15.33 ng/ml

Instrument :
 ECD_Q
 ClientSampled :
 HR-6A



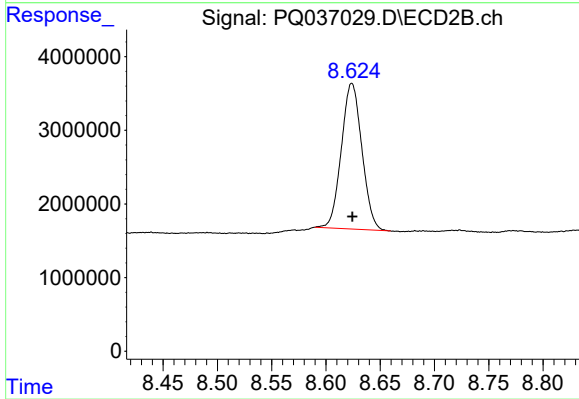
#1 Tetrachloro-m-xylene

R.T.: 3.699 min
 Delta R.T.: 0.006 min
 Response: 50076493
 Conc: 21.68 ng/ml



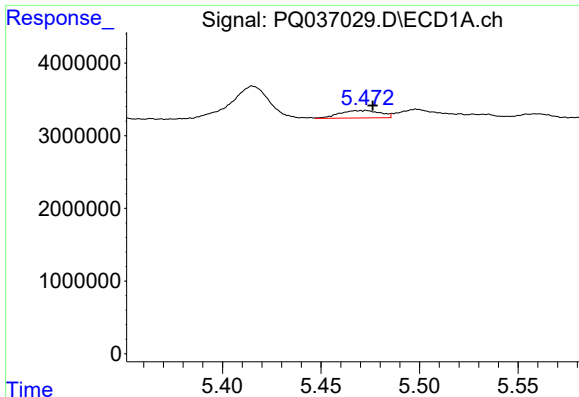
#2 Decachlorobiphenyl

R.T.: 9.885 min
 Delta R.T.: -0.008 min
 Response: 59302388
 Conc: 14.38 ng/ml



#2 Decachlorobiphenyl

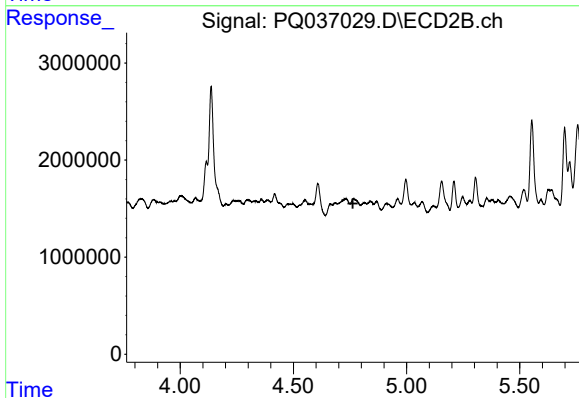
R.T.: 8.624 min
 Delta R.T.: 0.000 min
 Response: 26049987
 Conc: 13.86 ng/ml



#3 AR-1016-1

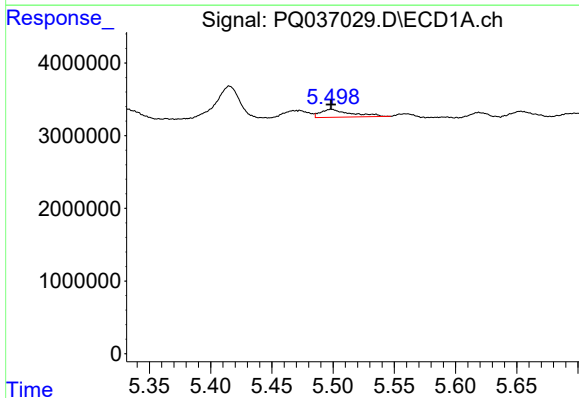
R.T.: 5.471 min
 Delta R.T.: -0.006 min
 Response: 1498026
 Conc: 10.88 ng/ml

Instrument :
 ECD_Q
 ClientSampled :
 HR-6A



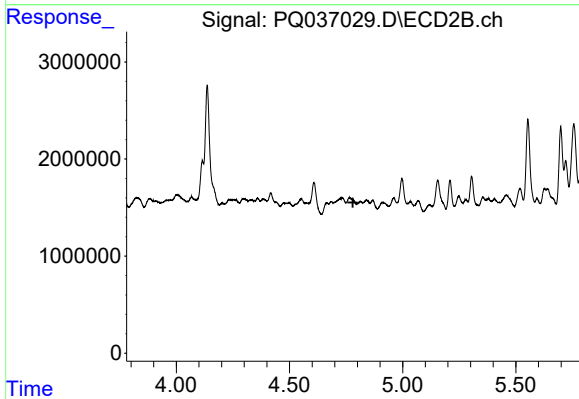
#3 AR-1016-1

R.T.: 0.000 min
 Exp R.T. : 4.763 min
 Response: 0
 Conc: N.D.



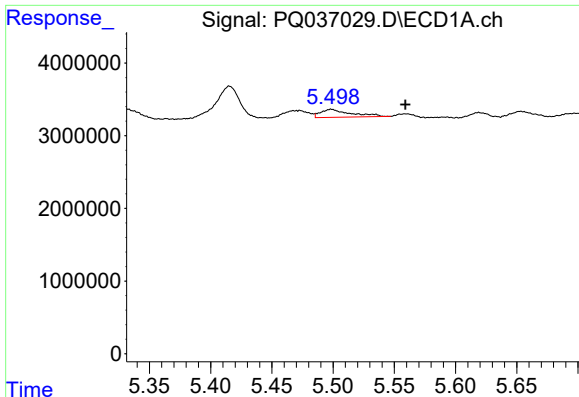
#4 AR-1016-2

R.T.: 5.499 min
 Delta R.T.: 0.000 min
 Response: 1881210
 Conc: 9.00 ng/ml



#4 AR-1016-2

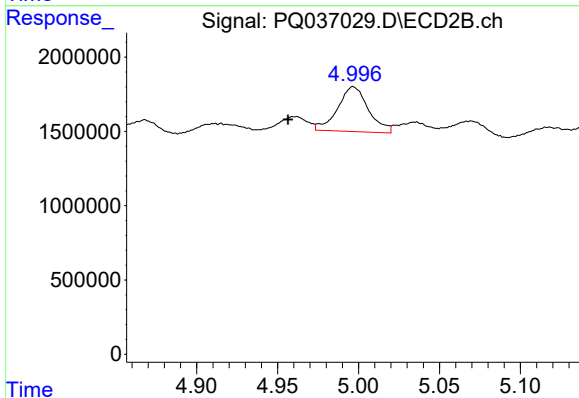
R.T.: 0.000 min
 Exp R.T. : 4.780 min
 Response: 0
 Conc: N.D.



#5 AR-1016-3

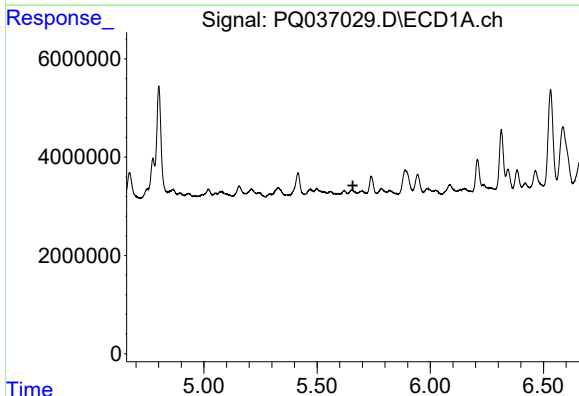
R.T.: 5.499 min
 Delta R.T.: -0.061 min
 Response: 1881210
 Conc: 15.72 ng/ml

Instrument :
 ECD_Q
 ClientSampleId :
 HR-6A



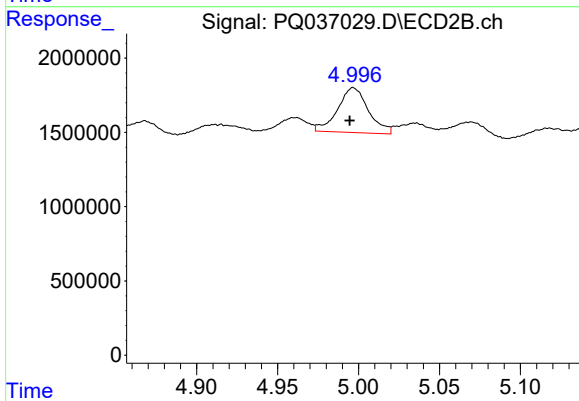
#5 AR-1016-3

R.T.: 4.997 min
 Delta R.T.: 0.040 min
 Response: 4009568
 Conc: 72.80 ng/ml



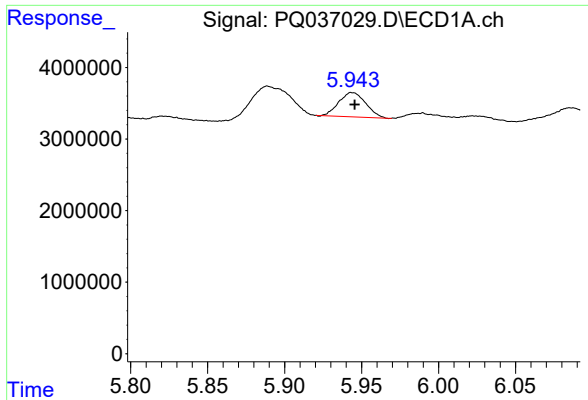
#6 AR-1016-4

R.T.: 0.000 min
 Exp R.T. : 5.658 min
 Response: 0
 Conc: N.D.



#6 AR-1016-4

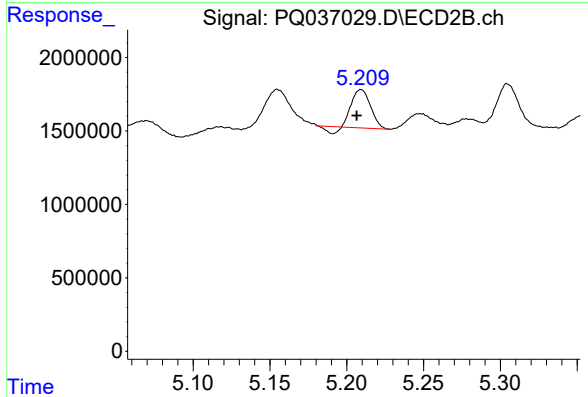
R.T.: 4.997 min
 Delta R.T.: 0.002 min
 Response: 4009568
 Conc: 89.51 ng/ml



#7 AR-1016-5

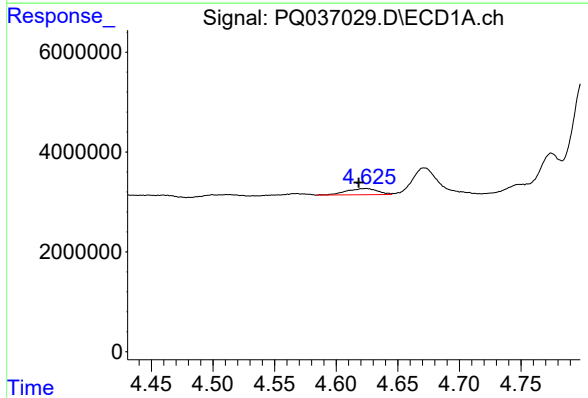
R.T.: 5.944 min
 Delta R.T.: -0.002 min
 Response: 4139189
 Conc: 42.20 ng/ml

Instrument :
 ECD_Q
 ClientSampled :
 HR-6A



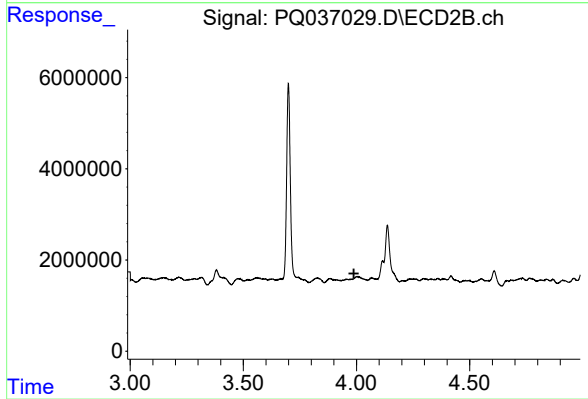
#7 AR-1016-5

R.T.: 5.209 min
 Delta R.T.: 0.003 min
 Response: 2103521
 Conc: 36.23 ng/ml



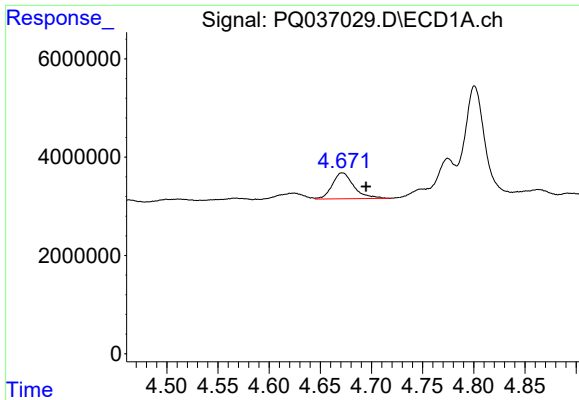
#9 AR-1221-2

R.T.: 4.624 min
 Delta R.T.: 0.005 min
 Response: 2224776
 Conc: 42.15 ng/ml



#9 AR-1221-2

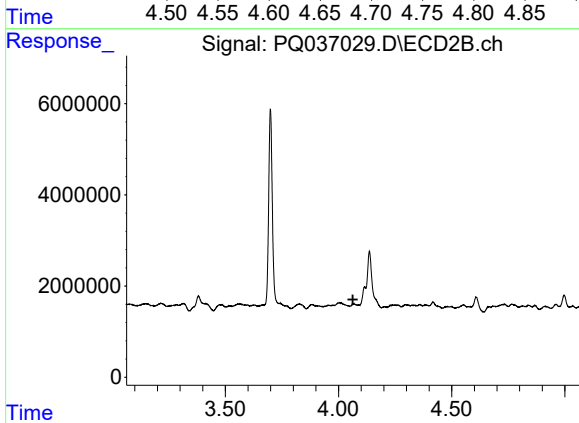
R.T.: 0.000 min
 Exp R.T. : 3.988 min
 Response: 0
 Conc: N.D.



#10 AR-1221-3

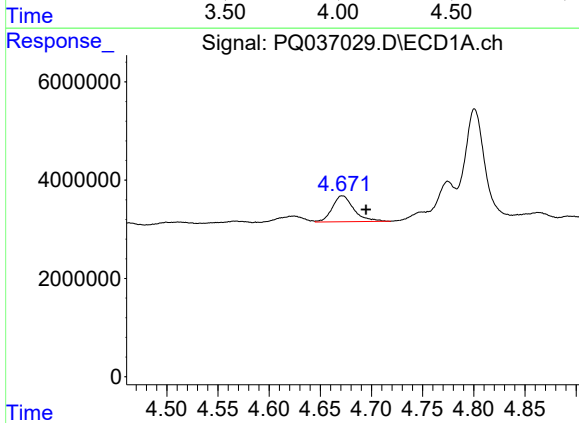
R.T.: 4.672 min
 Delta R.T.: -0.023 min
 Response: 7755601
 Conc: 41.99 ng/ml

Instrument :
 ECD_Q
 ClientSampleId :
 HR-6A



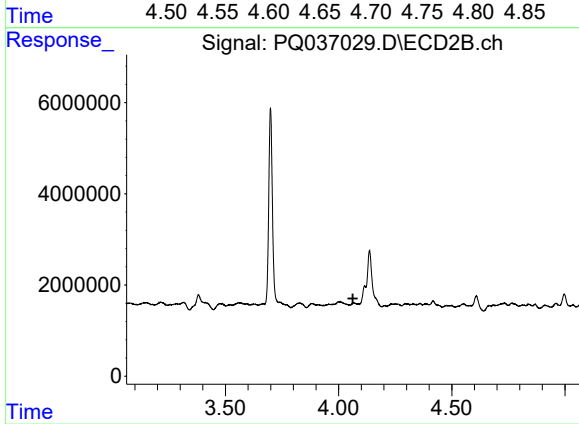
#10 AR-1221-3

R.T.: 0.000 min
 Exp R.T. : 4.063 min
 Response: 0
 Conc: N.D.



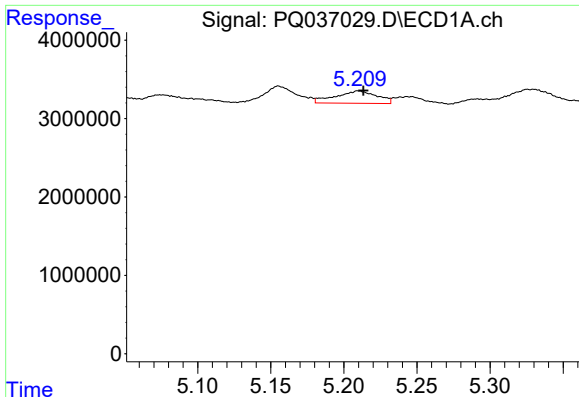
#11 AR-1232-1

R.T.: 4.672 min
 Delta R.T.: -0.023 min
 Response: 7755601
 Conc: 76.23 ng/ml



#11 AR-1232-1

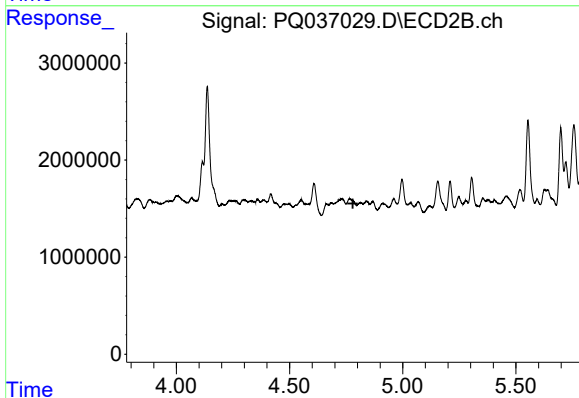
R.T.: 0.000 min
 Exp R.T. : 4.063 min
 Response: 0
 Conc: N.D.



#12 AR-1232-2

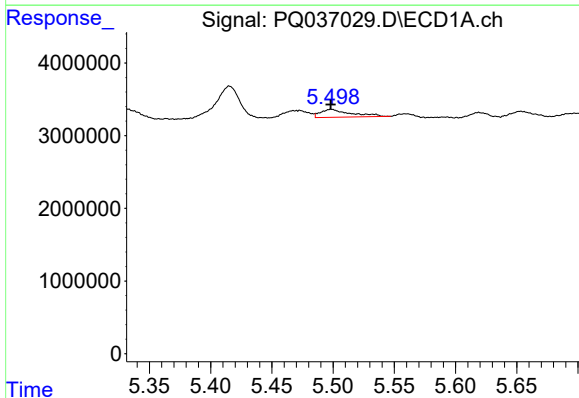
R.T.: 5.210 min
 Delta R.T.: -0.003 min
 Response: 3140416
 Conc: 60.73 ng/ml

Instrument :
 ECD_Q
 ClientSampled :
 HR-6A



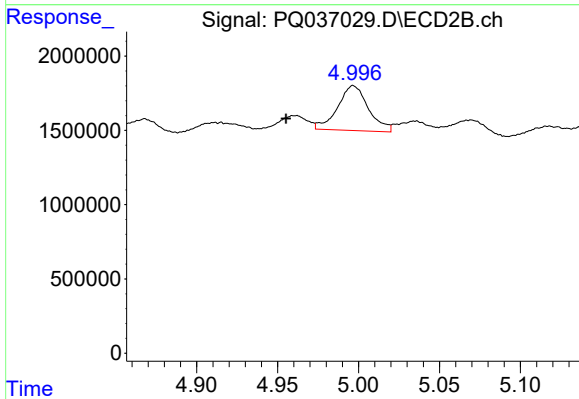
#12 AR-1232-2

R.T.: 0.000 min
 Exp R.T. : 4.780 min
 Response: 0
 Conc: N.D.



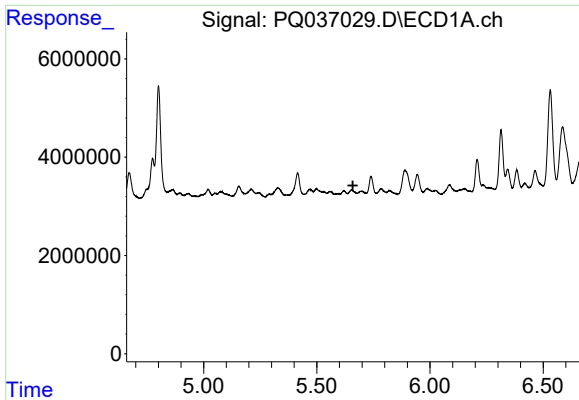
#13 AR-1232-3

R.T.: 5.499 min
 Delta R.T.: 0.000 min
 Response: 1881210
 Conc: 17.45 ng/ml



#13 AR-1232-3

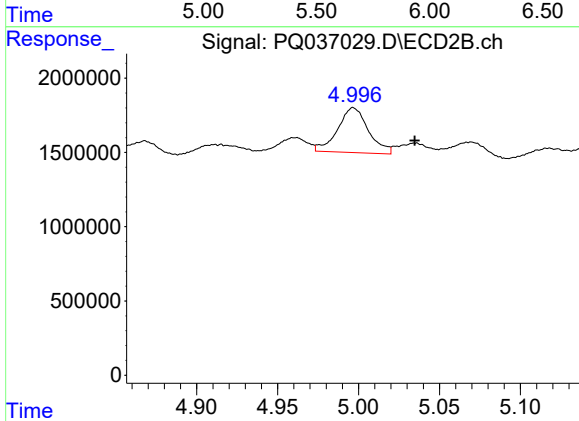
R.T.: 4.997 min
 Delta R.T.: 0.042 min
 Response: 4009568
 Conc: 135.39 ng/ml



#14 AR-1232-4

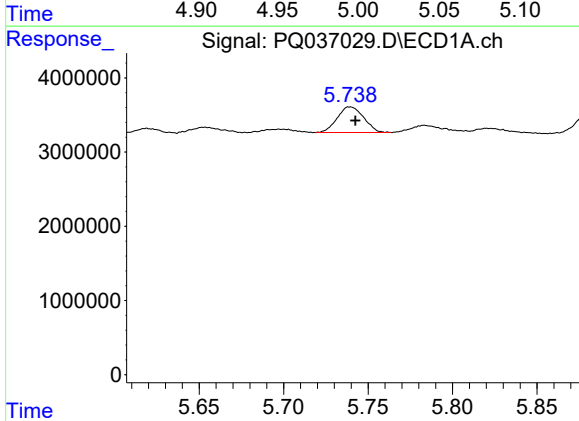
R.T.: 0.000 min
 Exp R.T.: 5.659 min
 Response: 0
 Conc: N.D.

Instrument :
 ECD_Q
 ClientSampled :
 HR-6A



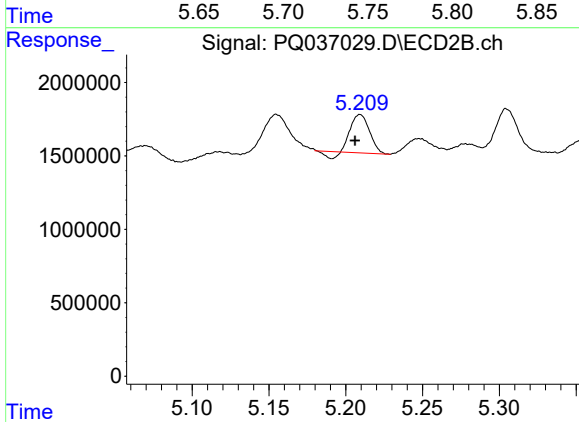
#14 AR-1232-4

R.T.: 4.997 min
 Delta R.T.: -0.038 min
 Response: 4009568
 Conc: 151.73 ng/ml



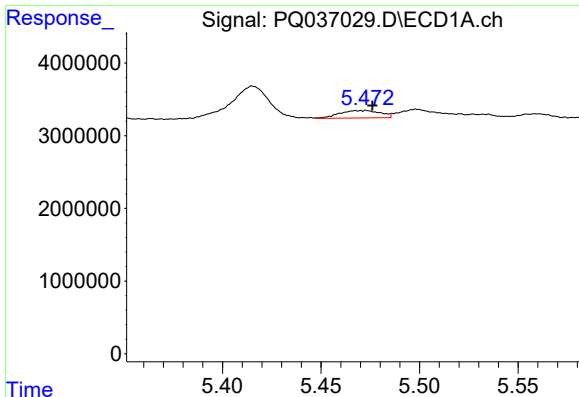
#15 AR-1232-5

R.T.: 5.740 min
 Delta R.T.: -0.003 min
 Response: 3758788
 Conc: 100.23 ng/ml



#15 AR-1232-5

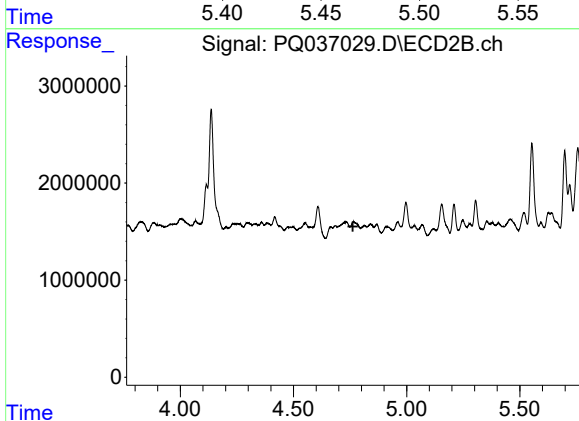
R.T.: 5.209 min
 Delta R.T.: 0.003 min
 Response: 2103521
 Conc: 73.55 ng/ml



#16 AR-1242-1

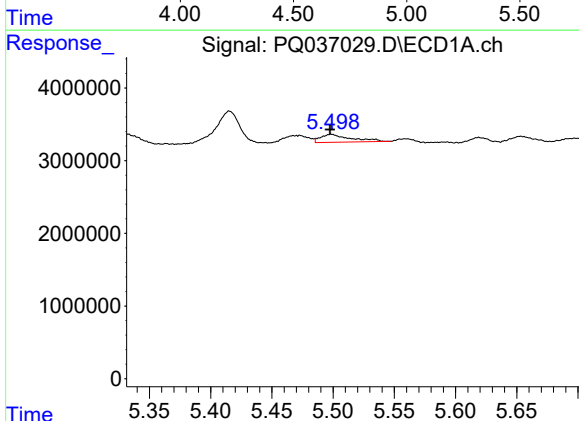
R.T.: 5.471 min
 Delta R.T.: -0.005 min
 Response: 1498026
 Conc: 12.05 ng/ml

Instrument :
 ECD_Q
 ClientSampleId :
 HR-6A



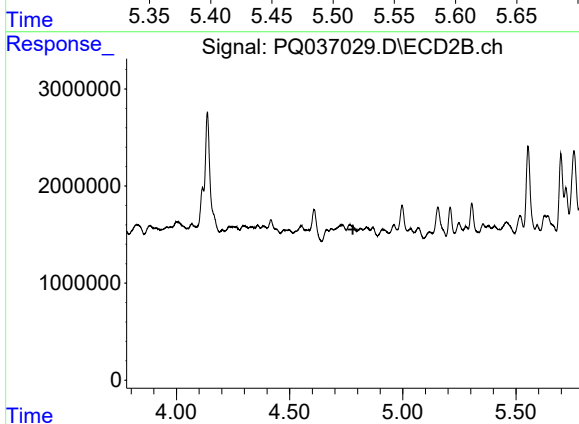
#16 AR-1242-1

R.T.: 0.000 min
 Exp R.T. : 4.762 min
 Response: 0
 Conc: N.D.



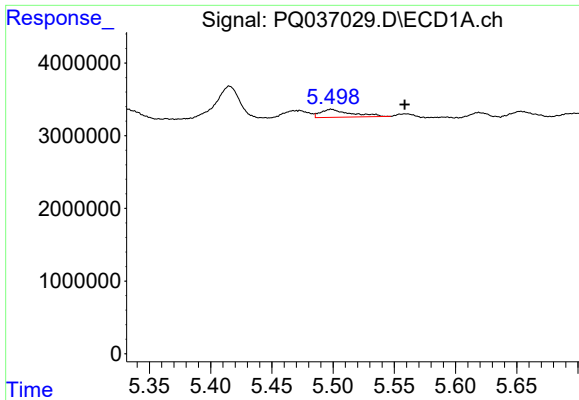
#17 AR-1242-2

R.T.: 5.499 min
 Delta R.T.: 0.000 min
 Response: 1881210
 Conc: 9.84 ng/ml



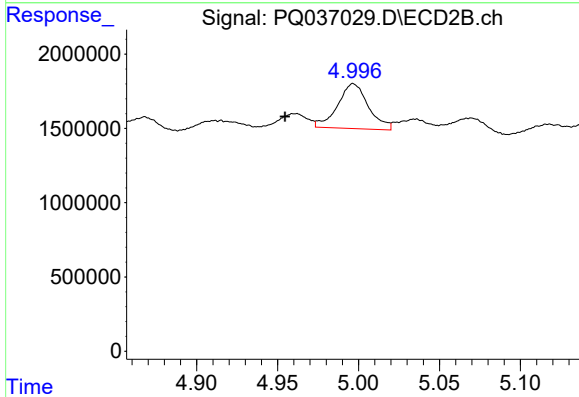
#17 AR-1242-2

R.T.: 0.000 min
 Exp R.T. : 4.780 min
 Response: 0
 Conc: N.D.

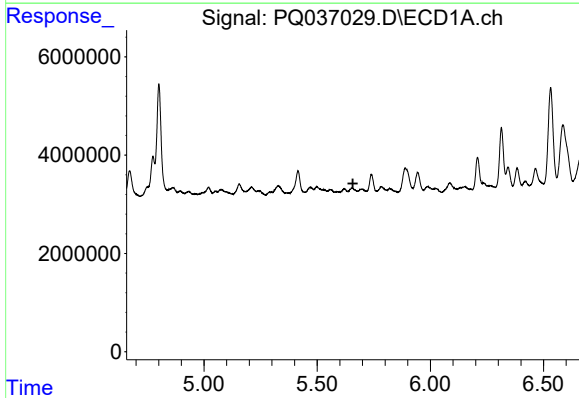


#18 AR-1242-3
 R.T.: 5.499 min
 Delta R.T.: -0.060 min
 Response: 1881210
 Conc: 17.15 ng/ml

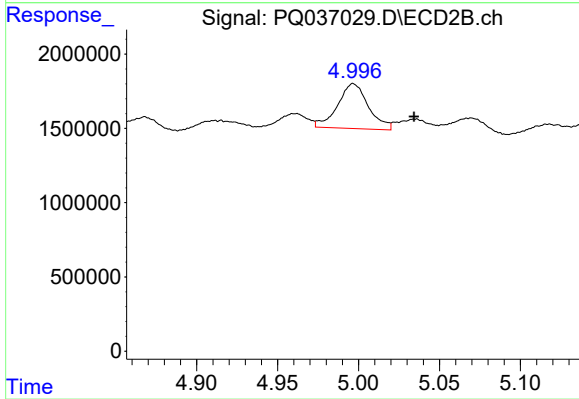
Instrument :
 ECD_Q
 ClientSampled :
 HR-6A



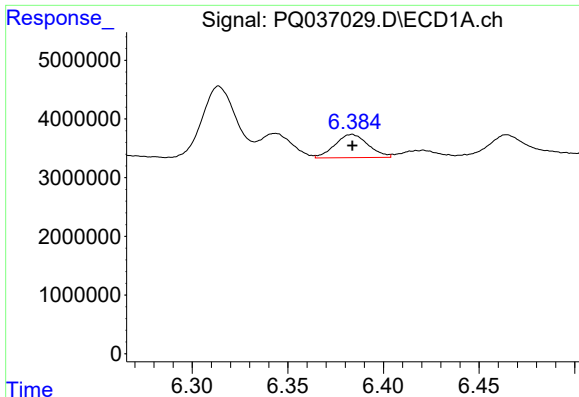
#18 AR-1242-3
 R.T.: 4.997 min
 Delta R.T.: 0.042 min
 Response: 4009568
 Conc: 78.51 ng/ml



#19 AR-1242-4
 R.T.: 0.000 min
 Exp R.T. : 5.658 min
 Response: 0
 Conc: N.D.



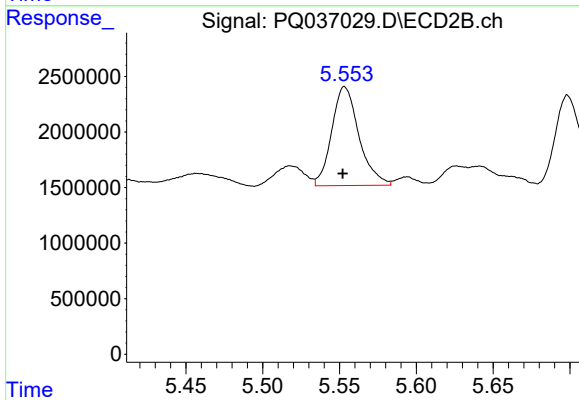
#19 AR-1242-4
 R.T.: 4.997 min
 Delta R.T.: -0.038 min
 Response: 4009568
 Conc: 80.53 ng/ml



#20 AR-1242-5

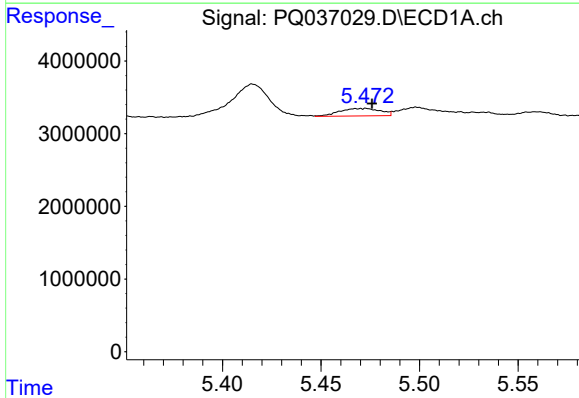
R.T.: 6.384 min
 Delta R.T.: 0.000 min
 Response: 4804299
 Conc: 48.53 ng/ml

Instrument :
 ECD_Q
 ClientSampleId :
 HR-6A



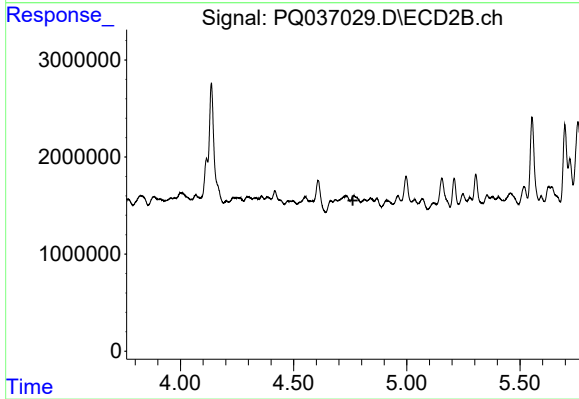
#20 AR-1242-5

R.T.: 5.553 min
 Delta R.T.: 0.001 min
 Response: 10988382
 Conc: 185.85 ng/ml



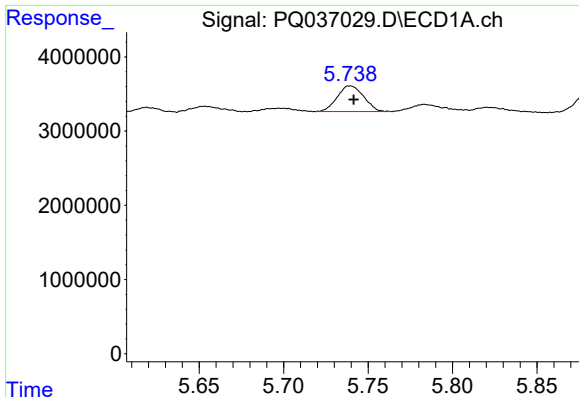
#21 AR-1248-1

R.T.: 5.471 min
 Delta R.T.: -0.005 min
 Response: 1498026
 Conc: 17.22 ng/ml



#21 AR-1248-1

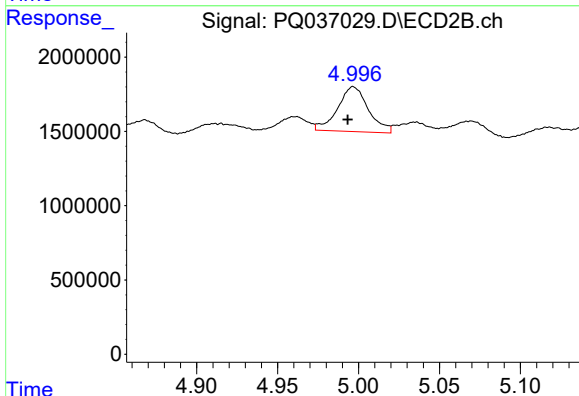
R.T.: 0.000 min
 Exp R.T. : 4.762 min
 Response: 0
 Conc: N.D.



#22 AR-1248-2

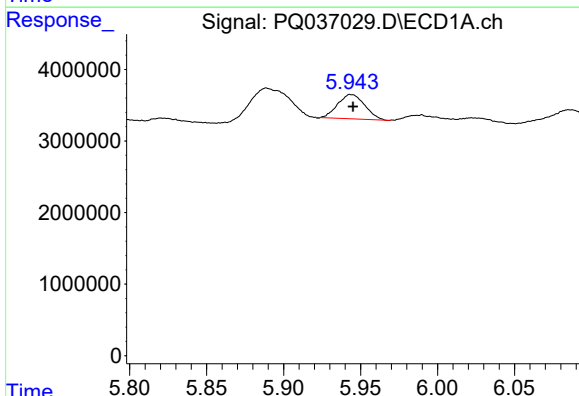
R.T.: 5.740 min
 Delta R.T.: -0.002 min
 Response: 3758788
 Conc: 30.41 ng/ml

Instrument :
 ECD_Q
 ClientSampleId :
 HR-6A



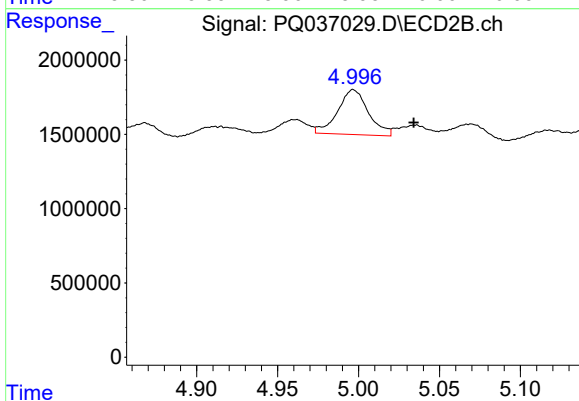
#22 AR-1248-2

R.T.: 4.997 min
 Delta R.T.: 0.003 min
 Response: 4009568
 Conc: 60.84 ng/ml



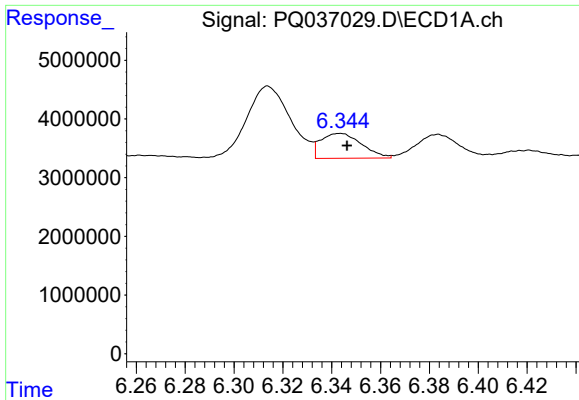
#23 AR-1248-3

R.T.: 5.944 min
 Delta R.T.: -0.001 min
 Response: 4139189
 Conc: 30.04 ng/ml



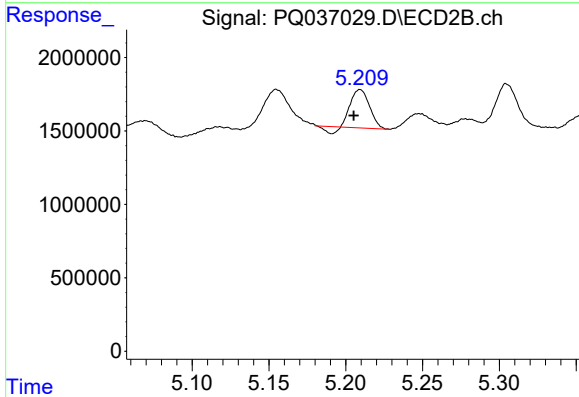
#23 AR-1248-3

R.T.: 4.997 min
 Delta R.T.: -0.037 min
 Response: 4009568
 Conc: 60.15 ng/ml

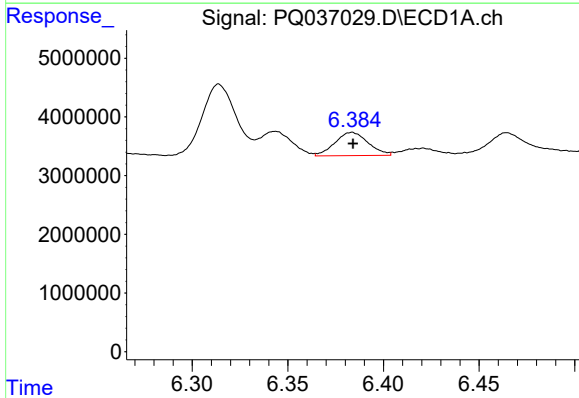


#24 AR-1248-4
 R.T.: 6.343 min
 Delta R.T.: -0.003 min
 Response: 4935317
 Conc: 30.59 ng/ml

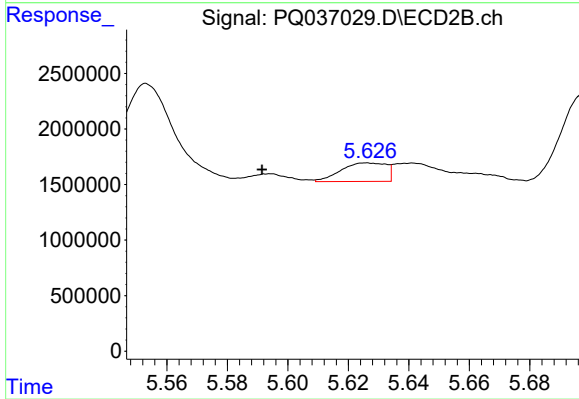
Instrument :
 ECD_Q
 ClientSampled :
 HR-6A



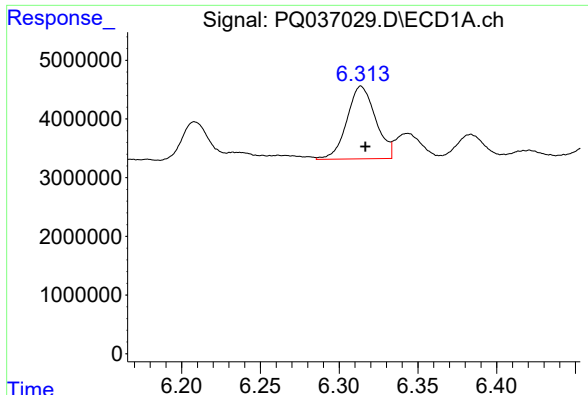
#24 AR-1248-4
 R.T.: 5.209 min
 Delta R.T.: 0.004 min
 Response: 2103521
 Conc: 26.02 ng/ml



#25 AR-1248-5
 R.T.: 6.384 min
 Delta R.T.: 0.000 min
 Response: 4804299
 Conc: 31.38 ng/ml



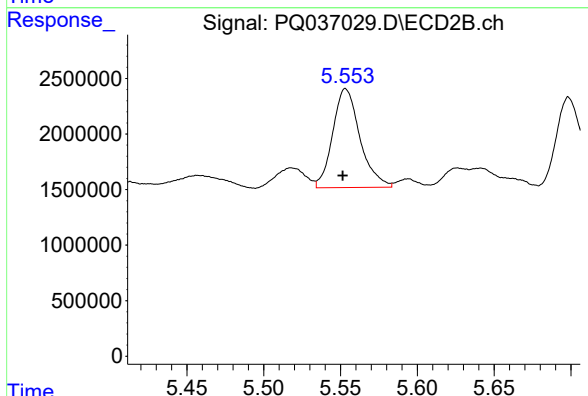
#25 AR-1248-5
 R.T.: 5.626 min
 Delta R.T.: 0.035 min
 Response: 1728861
 Conc: 21.87 ng/ml



#26 AR-1254-1

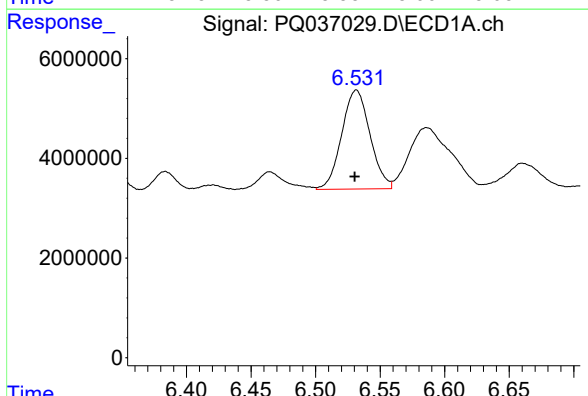
R.T.: 6.314 min
 Delta R.T.: -0.003 min
 Response: 15694934
 Conc: 36.01 ng/ml

Instrument :
 ECD_Q
 ClientSampled :
 HR-6A



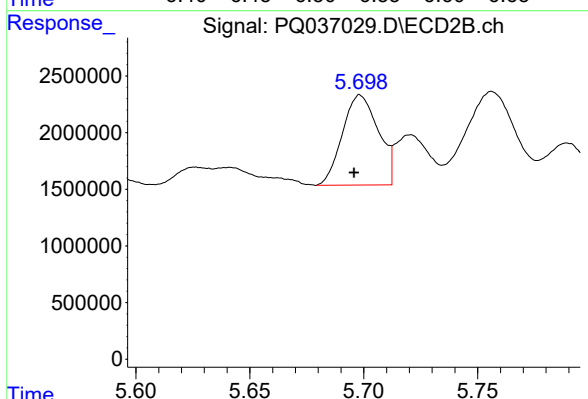
#26 AR-1254-1

R.T.: 5.553 min
 Delta R.T.: 0.002 min
 Response: 10988382
 Conc: 32.75 ng/ml



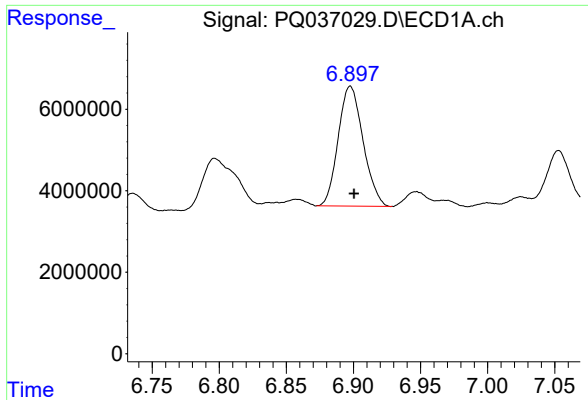
#27 AR-1254-2

R.T.: 6.531 min
 Delta R.T.: 0.001 min
 Response: 30340811
 Conc: 44.74 ng/ml



#27 AR-1254-2

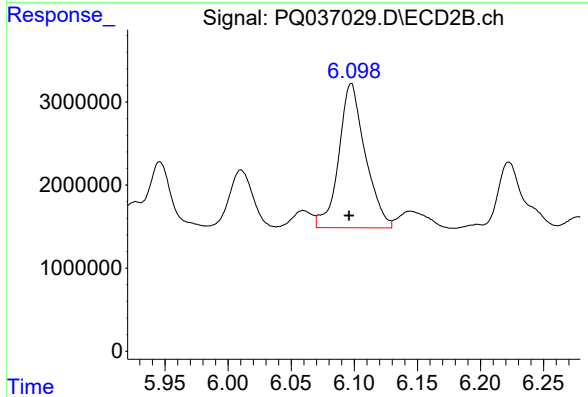
R.T.: 5.698 min
 Delta R.T.: 0.003 min
 Response: 8722777
 Conc: 31.10 ng/ml



#28 AR-1254-3

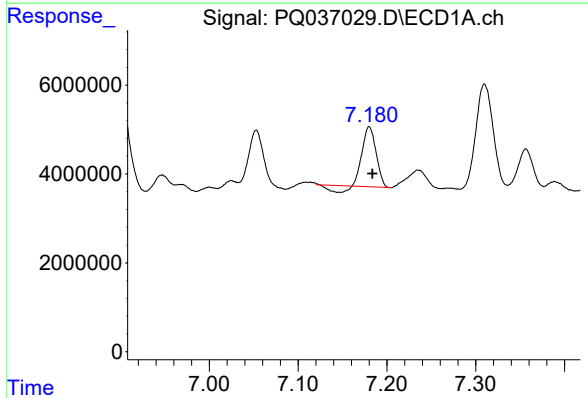
R.T.: 6.898 min
 Delta R.T.: -0.003 min
 Response: 37974757
 Conc: 54.14 ng/ml

Instrument :
 ECD_Q
 ClientSampled :
 HR-6A



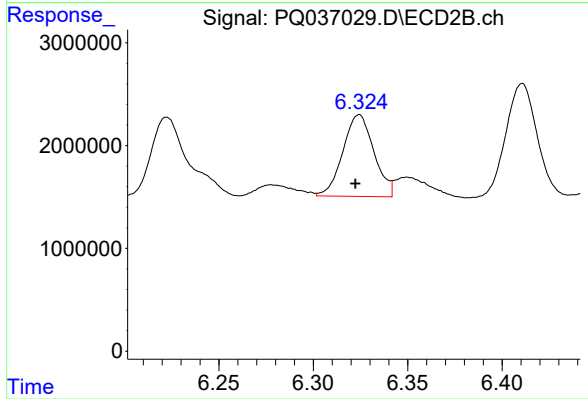
#28 AR-1254-3

R.T.: 6.098 min
 Delta R.T.: 0.002 min
 Response: 25356834
 Conc: 55.66 ng/ml



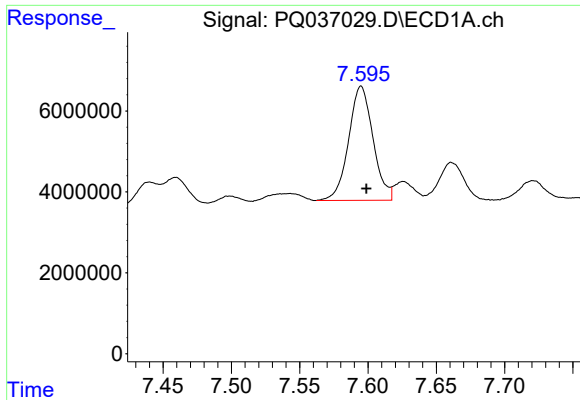
#29 AR-1254-4

R.T.: 7.180 min
 Delta R.T.: -0.003 min
 Response: 13150664
 Conc: 24.75 ng/ml



#29 AR-1254-4

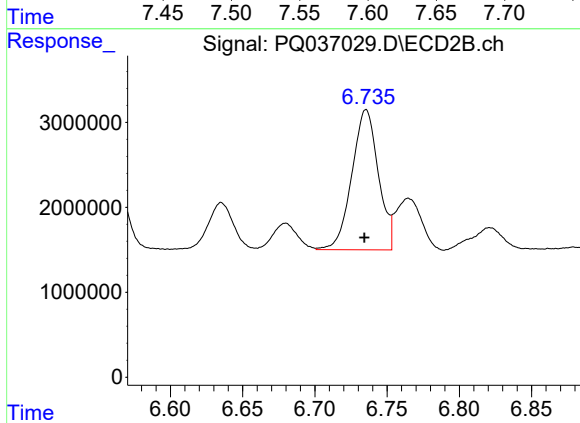
R.T.: 6.324 min
 Delta R.T.: 0.002 min
 Response: 9095184
 Conc: 32.13 ng/ml



#30 AR-1254-5

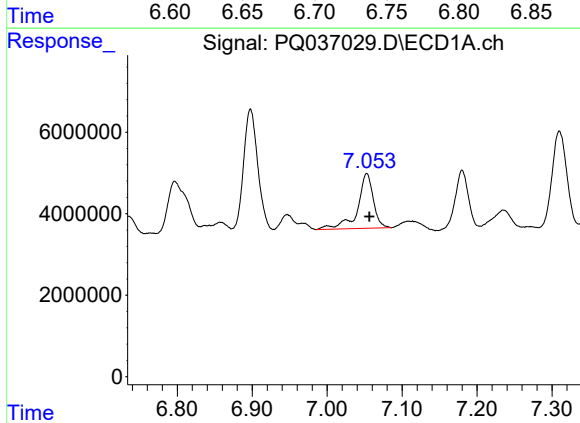
R.T.: 7.595 min
 Delta R.T.: -0.004 min
 Response: 35116053
 Conc: 64.57 ng/ml

Instrument :
 ECD_Q
 ClientSampleId :
 HR-6A



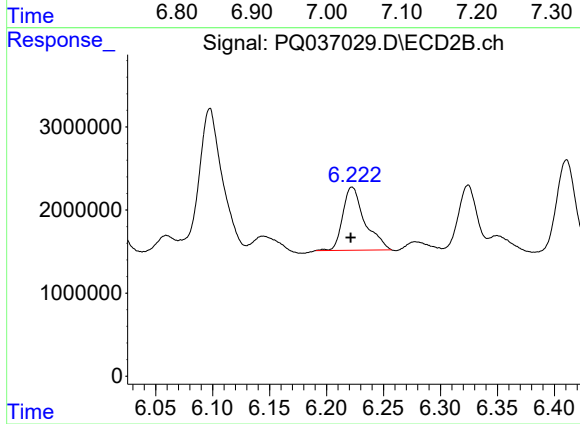
#30 AR-1254-5

R.T.: 6.735 min
 Delta R.T.: 0.001 min
 Response: 21061098
 Conc: 56.93 ng/ml



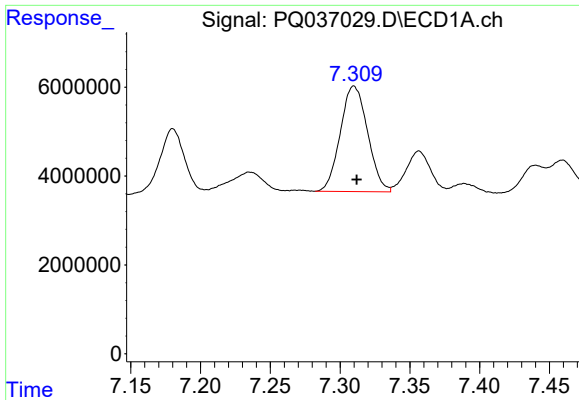
#31 AR-1260-1

R.T.: 7.053 min
 Delta R.T.: -0.004 min
 Response: 19670510
 Conc: 99.98 ng/ml



#31 AR-1260-1

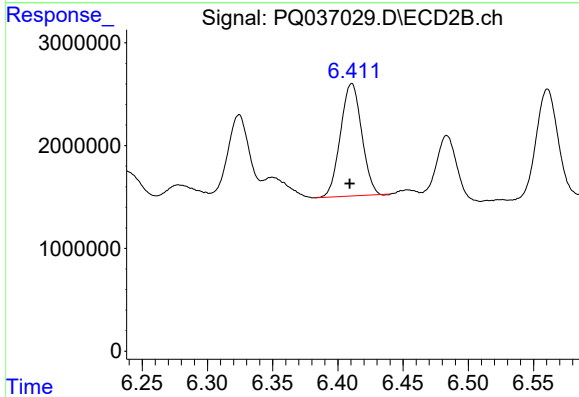
R.T.: 6.222 min
 Delta R.T.: 0.001 min
 Response: 10217523
 Conc: 91.62 ng/ml



#32 AR-1260-2

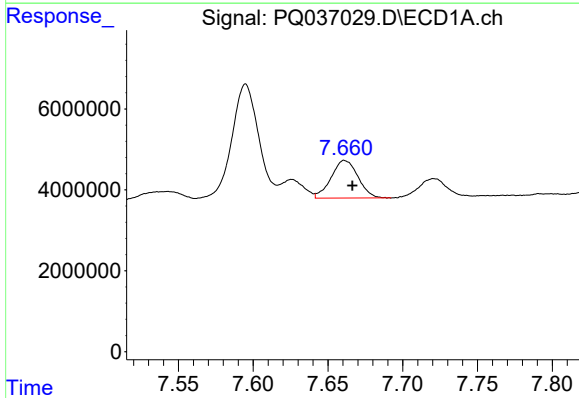
R.T.: 7.310 min
 Delta R.T.: -0.002 min
 Response: 32338270
 Conc: 128.08 ng/ml

Instrument :
 ECD_Q
 ClientSampled :
 HR-6A



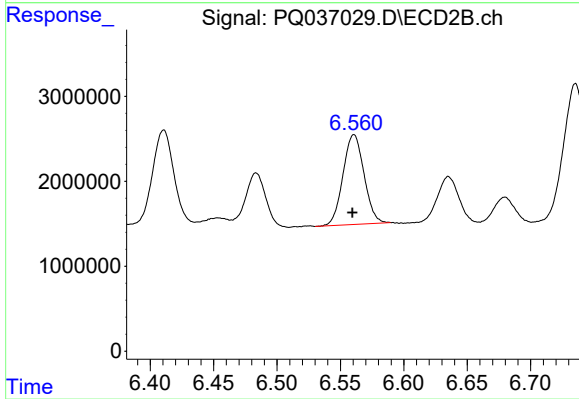
#32 AR-1260-2

R.T.: 6.411 min
 Delta R.T.: 0.001 min
 Response: 12369182
 Conc: 90.98 ng/ml



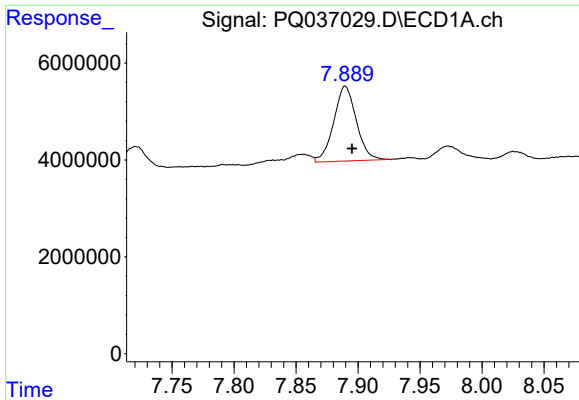
#33 AR-1260-3

R.T.: 7.661 min
 Delta R.T.: -0.005 min
 Response: 11615727
 Conc: 72.52 ng/ml



#33 AR-1260-3

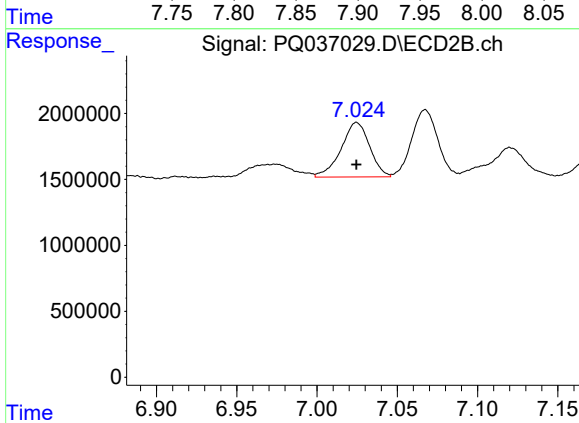
R.T.: 6.561 min
 Delta R.T.: 0.001 min
 Response: 12214741
 Conc: 98.21 ng/ml



#34 AR-1260-4

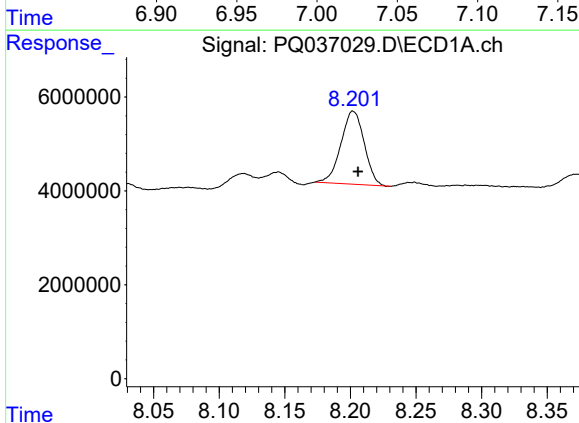
R.T.: 7.890 min
 Delta R.T.: -0.005 min
 Response: 19592881
 Conc: 108.06 ng/ml

Instrument :
 ECD_Q
 ClientSampleId :
 HR-6A



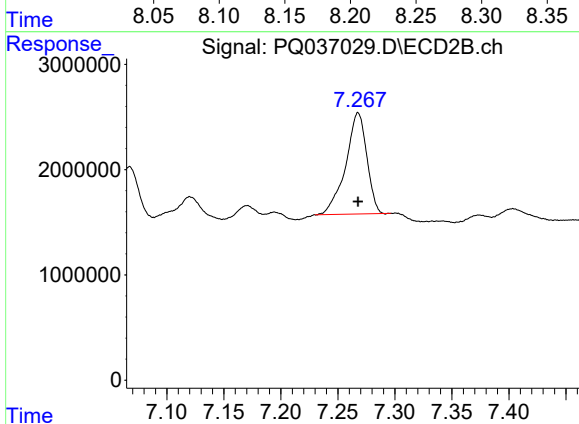
#34 AR-1260-4

R.T.: 7.025 min
 Delta R.T.: 0.000 min
 Response: 5123872
 Conc: 60.47 ng/ml



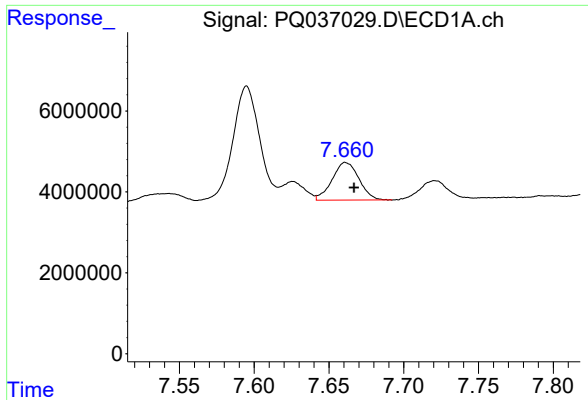
#35 AR-1260-5

R.T.: 8.202 min
 Delta R.T.: -0.004 min
 Response: 19276887
 Conc: 50.30 ng/ml



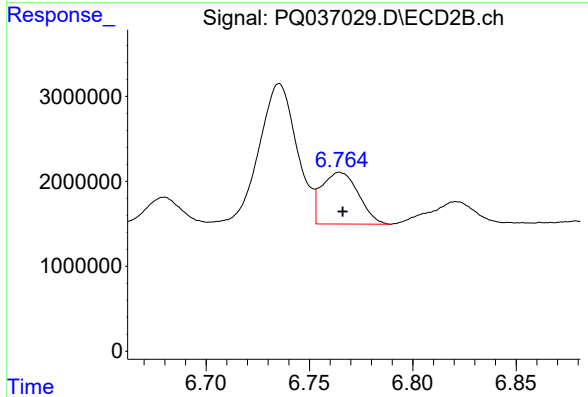
#35 AR-1260-5

R.T.: 7.268 min
 Delta R.T.: 0.000 min
 Response: 12396128
 Conc: 59.96 ng/ml

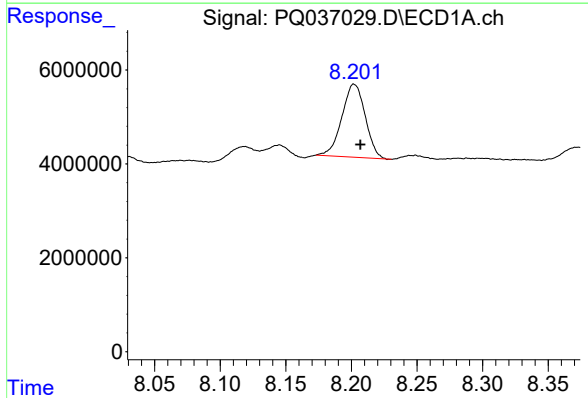


#36 AR-1262-1
 R.T.: 7.661 min
 Delta R.T.: -0.005 min
 Response: 11615727
 Conc: 39.29 ng/ml

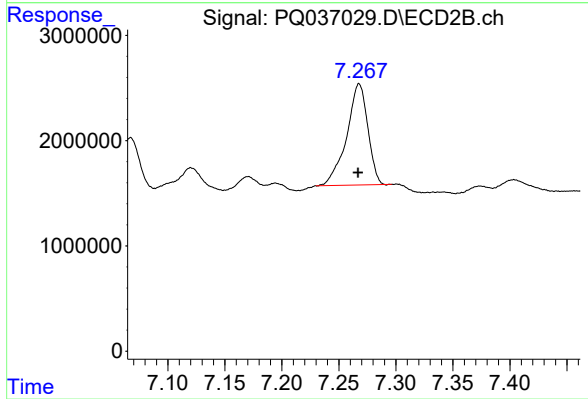
Instrument :
 ECD_Q
 ClientSampleId :
 HR-6A



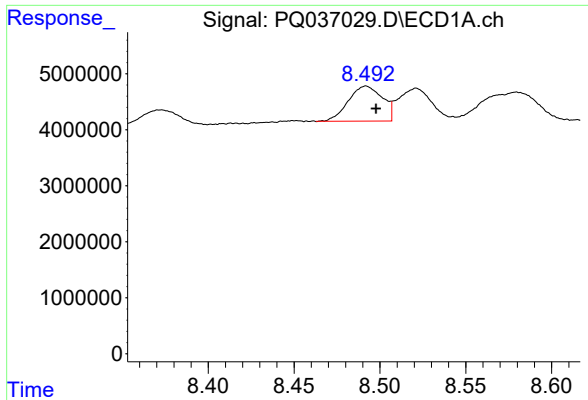
#36 AR-1262-1
 R.T.: 6.765 min
 Delta R.T.: -0.001 min
 Response: 7540187
 Conc: 46.44 ng/ml



#37 AR-1262-2
 R.T.: 8.202 min
 Delta R.T.: -0.005 min
 Response: 19276887
 Conc: 36.06 ng/ml



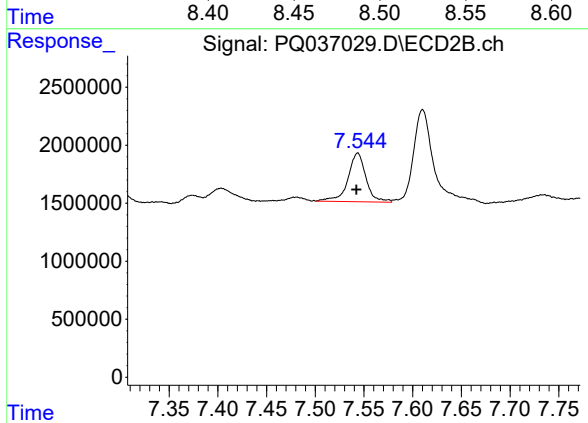
#37 AR-1262-2
 R.T.: 7.268 min
 Delta R.T.: 0.000 min
 Response: 12396128
 Conc: 43.03 ng/ml



#38 AR-1262-3

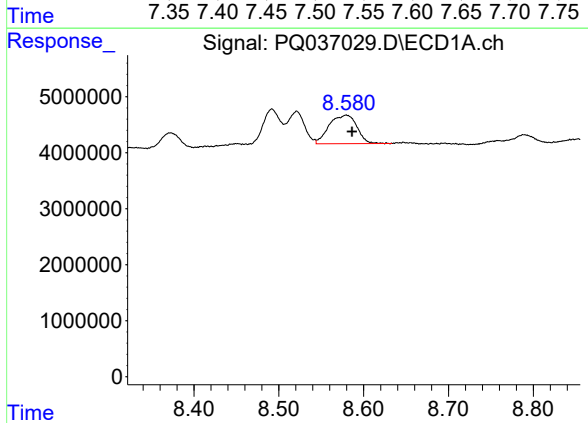
R.T.: 8.492 min
 Delta R.T.: -0.006 min
 Response: 8661524
 Conc: 37.53 ng/ml

Instrument :
 ECD_Q
 ClientSampleId :
 HR-6A



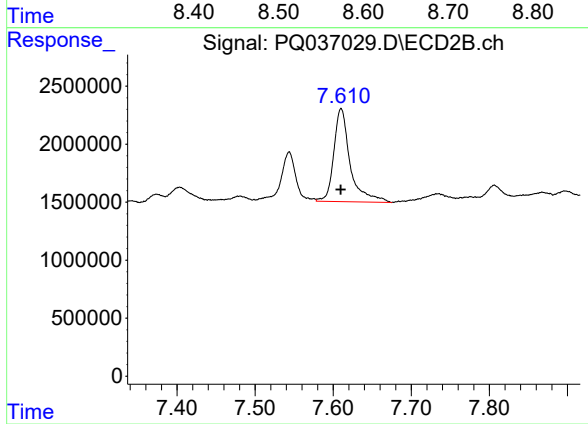
#38 AR-1262-3

R.T.: 7.544 min
 Delta R.T.: 0.002 min
 Response: 5383626
 Conc: 46.57 ng/ml



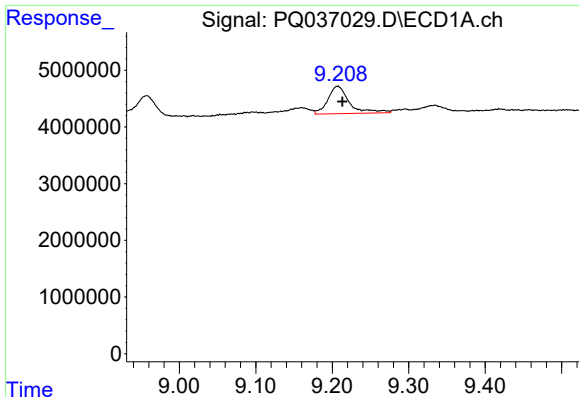
#39 AR-1262-4

R.T.: 8.579 min
 Delta R.T.: -0.007 min
 Response: 11614397
 Conc: 43.05 ng/ml



#39 AR-1262-4

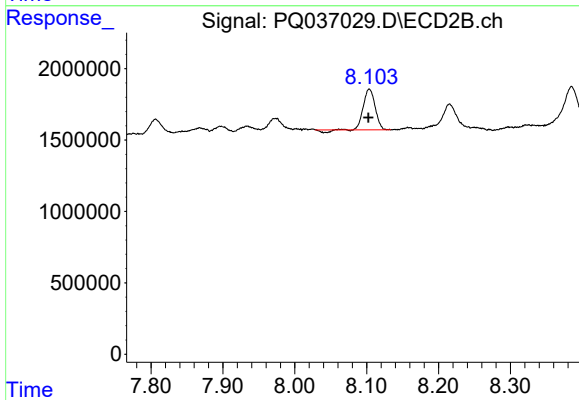
R.T.: 7.610 min
 Delta R.T.: 0.000 min
 Response: 11710000
 Conc: 55.98 ng/ml



#40 AR-1262-5

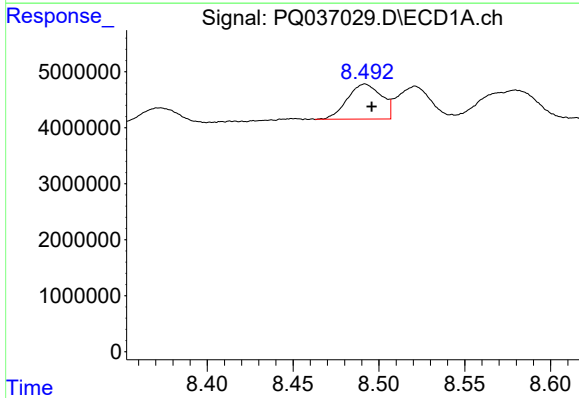
R.T.: 9.207 min
 Delta R.T.: -0.006 min
 Response: 9477186
 Conc: 50.31 ng/ml

Instrument :
 ECD_Q
 ClientSampled :
 HR-6A



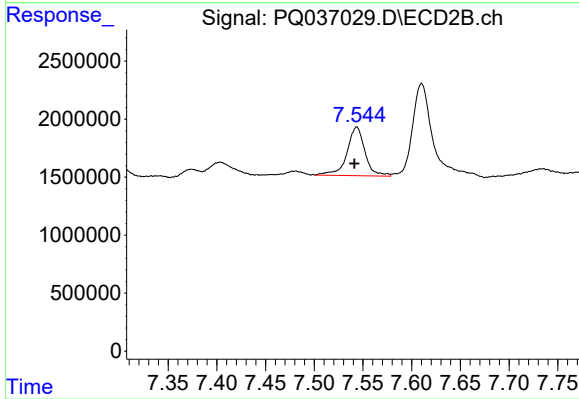
#40 AR-1262-5

R.T.: 8.104 min
 Delta R.T.: 0.000 min
 Response: 3169155
 Conc: 34.13 ng/ml



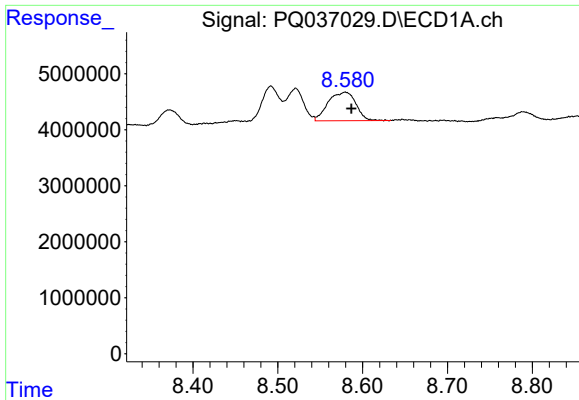
#41 AR-1268-1

R.T.: 8.492 min
 Delta R.T.: -0.004 min
 Response: 8661524
 Conc: 12.94 ng/ml



#41 AR-1268-1

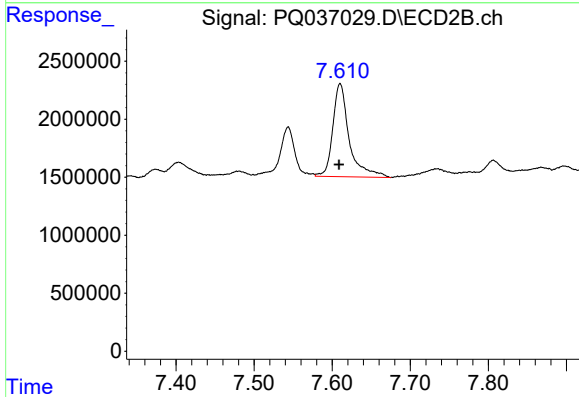
R.T.: 7.544 min
 Delta R.T.: 0.002 min
 Response: 5383626
 Conc: 15.84 ng/ml



#42 AR-1268-2

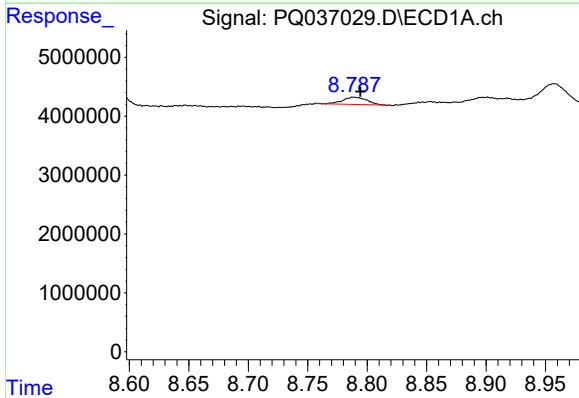
R.T.: 8.579 min
 Delta R.T.: -0.007 min
 Response: 11614397
 Conc: 18.71 ng/ml

Instrument :
 ECD_Q
 ClientSampleId :
 HR-6A



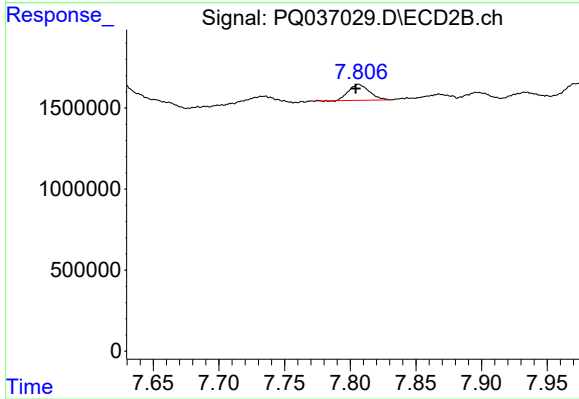
#42 AR-1268-2

R.T.: 7.610 min
 Delta R.T.: 0.001 min
 Response: 11710000
 Conc: 37.85 ng/ml



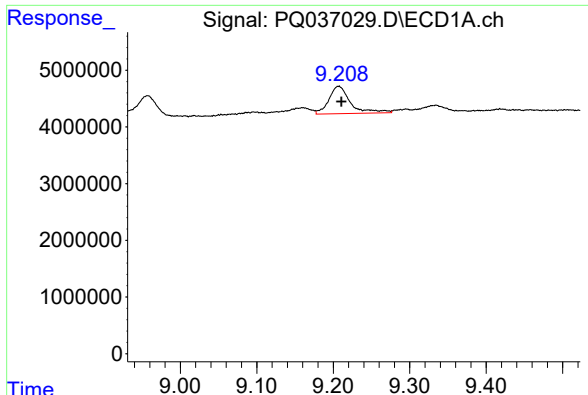
#43 AR-1268-3

R.T.: 8.790 min
 Delta R.T.: -0.005 min
 Response: 1749580
 Conc: 3.19 ng/ml



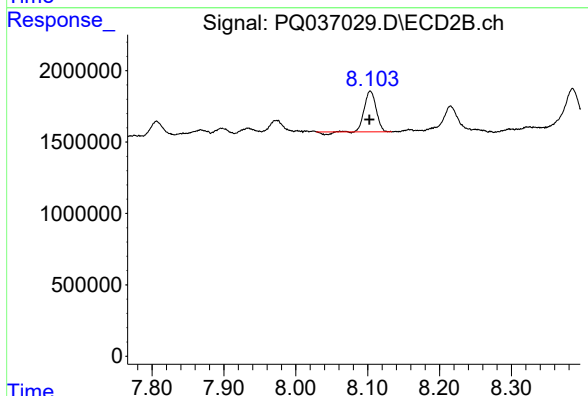
#43 AR-1268-3

R.T.: 7.806 min
 Delta R.T.: 0.002 min
 Response: 1077101
 Conc: 4.21 ng/ml

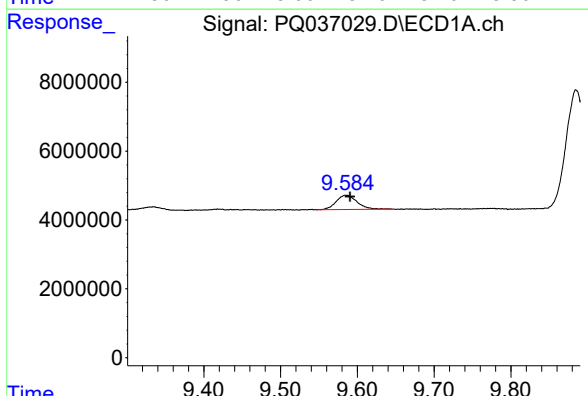


#44 AR-1268-4
 R.T.: 9.207 min
 Delta R.T.: -0.004 min
 Response: 9477186
 Conc: 45.77 ng/ml

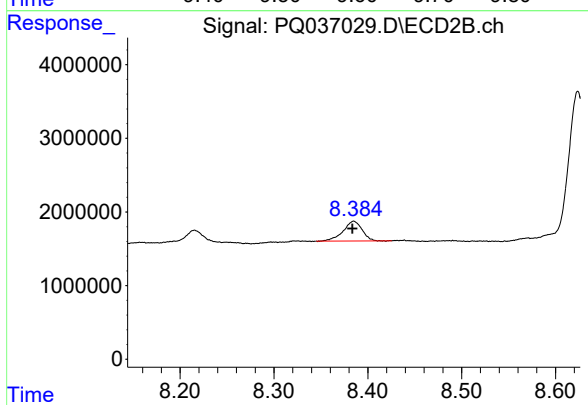
Instrument :
 ECD_Q
 ClientSampleId :
 HR-6A



#44 AR-1268-4
 R.T.: 8.104 min
 Delta R.T.: 0.001 min
 Response: 3169155
 Conc: 30.27 ng/ml



#45 AR-1268-5
 R.T.: 9.585 min
 Delta R.T.: -0.005 min
 Response: 7800802
 Conc: 4.67 ng/ml



#45 AR-1268-5
 R.T.: 8.385 min
 Delta R.T.: 0.002 min
 Response: 3788335
 Conc: 4.69 ng/ml