

Data Path : Z:\pestpcbsrv\HPCHEM1\ECD_Q\Data\PQ020719\
 Data File : PQ037034.D
 Signal(s) : Signal #1: ECD1A.ch Signal #2: ECD2B.ch
 Acq On : 07 Feb 2019 20:07
 Operator : SM\SJ
 Sample : K1383-02
 Misc :
 ALS Vial : 25 Sample Multiplier: 1

Instrument :
 ECD_Q
 ClientSampleId :
 A0C5B-SS1-4.5-5.0

Integration File signal 1: autoint1.e
 Integration File signal 2: autoint2.e
 Quant Time: Feb 08 08:53:08 2019
 Quant Method : Z:\pestpcbsrv\HPCHEM1\ECD_Q\Method\PQ020619.M
 Quant Title : GC EXTRACTABLES
 QLast Update : Wed Feb 06 18:32:04 2019
 Response via : Initial Calibration
 Integrator: ChemStation

Volume Inj. : 2 µl
 Signal #1 Phase : ZB-MR1 Signal #2 Phase: ZB-MR2
 Signal #1 Info : 30Mx0.32mmx 0.50µ Signal #2 Info : 30M x 0.32mm x 0.25µm

Compound	RT#1	RT#2	Resp#1	Resp#2	ng/ml	ng/ml

System Monitoring Compounds						
1) SA Tetrachlo...	4.320	3.697	87597871	49938126	19.715	21.623
2) SA Decachlor...	9.884	8.623	69533429	32234176	16.865	17.156

Target Compounds

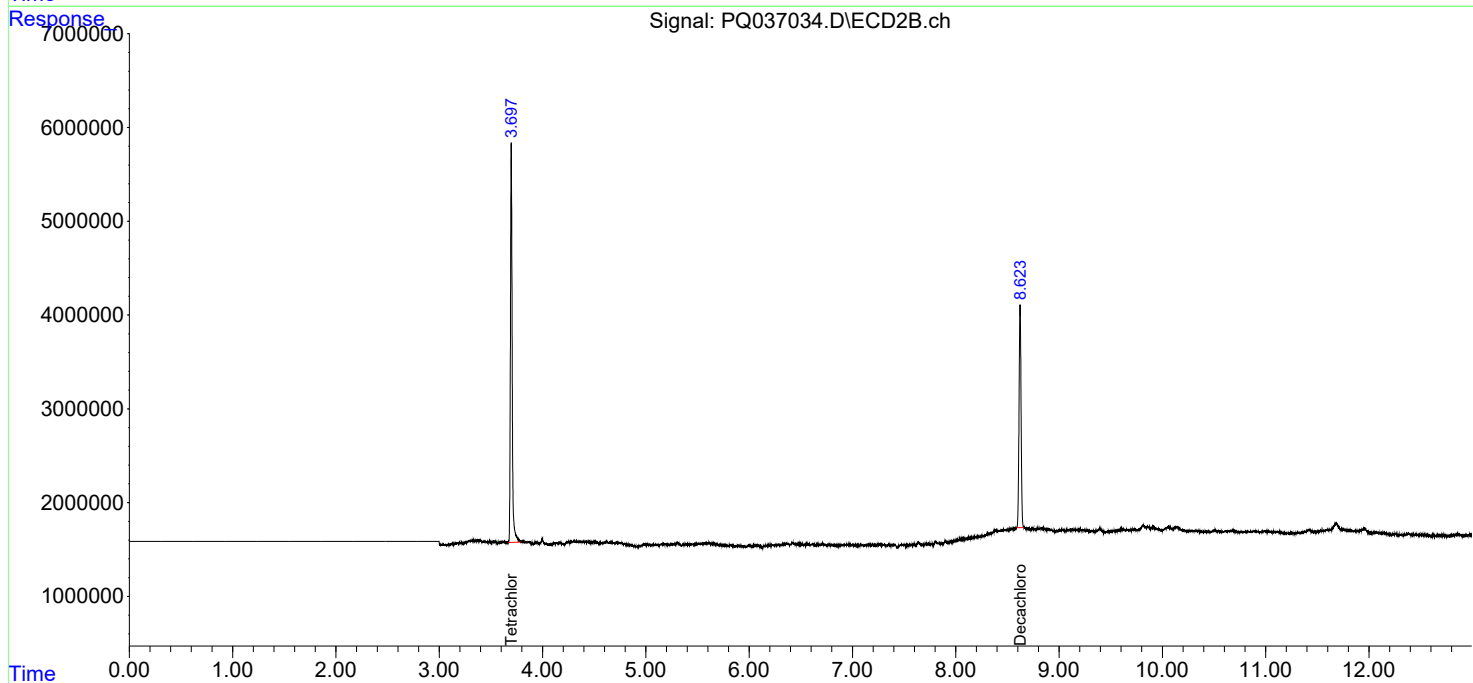
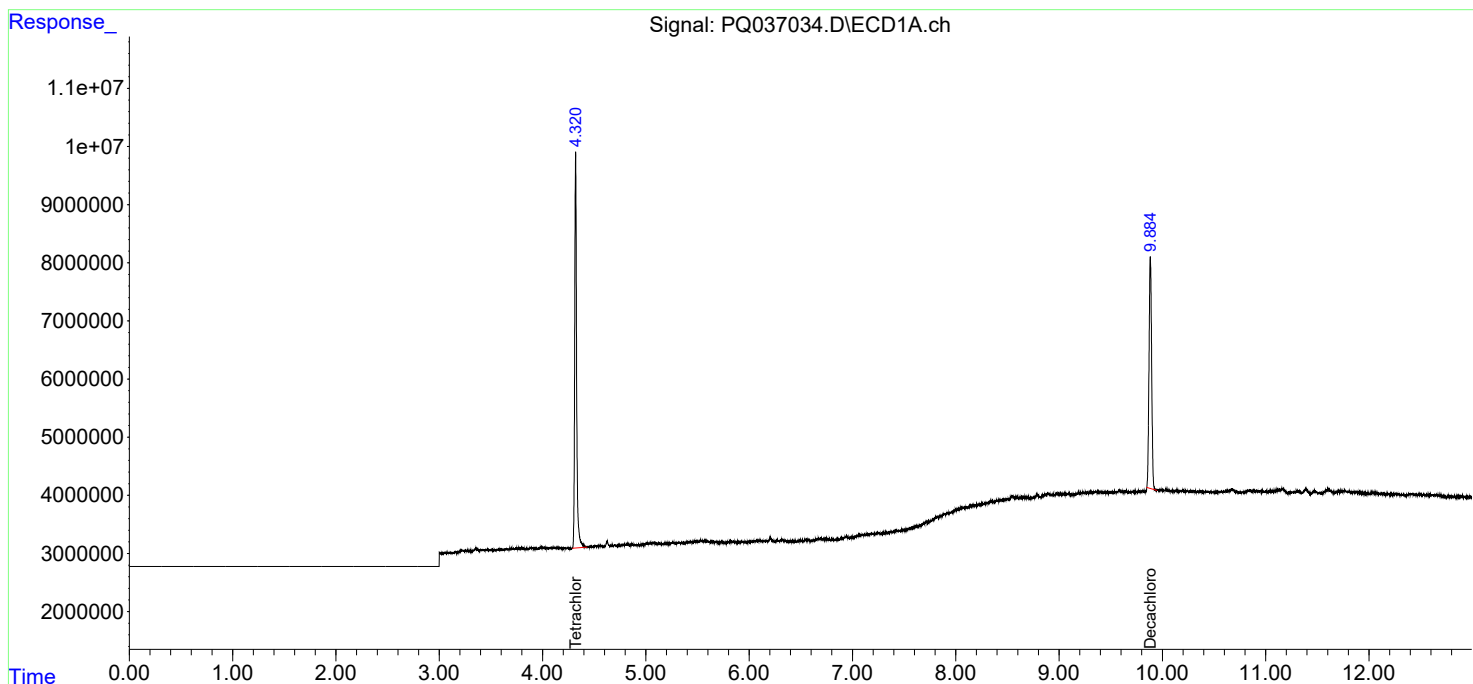
(f)=RT Delta > 1/2 Window (#)=Amounts differ by > 25% (m)=manual int.

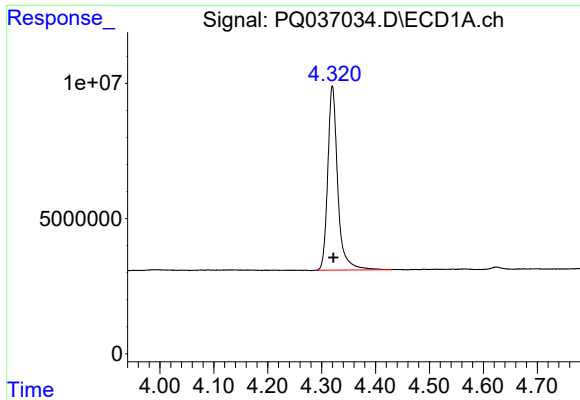
Data Path : Z:\pestpcbsrv\HPCHEM1\ECD_Q\Data\PQ020719\
 Data File : PQ037034.D
 Signal(s) : Signal #1: ECD1A.ch Signal #2: ECD2B.ch
 Acq On : 07 Feb 2019 20:07
 Operator : SM\SJ
 Sample : K1383-02
 Misc :
 ALS Vial : 25 Sample Multiplier: 1

Instrument :
 ECD_Q
 ClientSampleId :
 A0C5B-SS1-4.5-5.0

Integration File signal 1: autoint1.e
 Integration File signal 2: autoint2.e
 Quant Time: Feb 08 08:53:08 2019
 Quant Method : Z:\pestpcbsrv\HPCHEM1\ECD_Q\Method\PQ020619.M
 Quant Title : GC EXTRACTABLES
 QLast Update : Wed Feb 06 18:32:04 2019
 Response via : Initial Calibration
 Integrator: ChemStation

Volume Inj. : 2 µl
 Signal #1 Phase : ZB-MR1 Signal #2 Phase: ZB-MR2
 Signal #1 Info : 30Mx0.32mmx 0.50µ Signal #2 Info : 30M x 0.32mm x 0.25µm

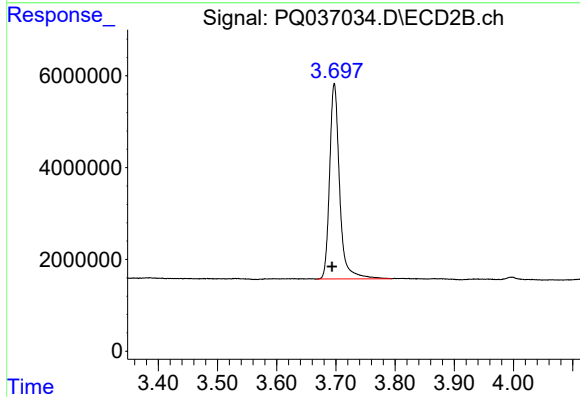




#1 Tetrachloro-m-xylene

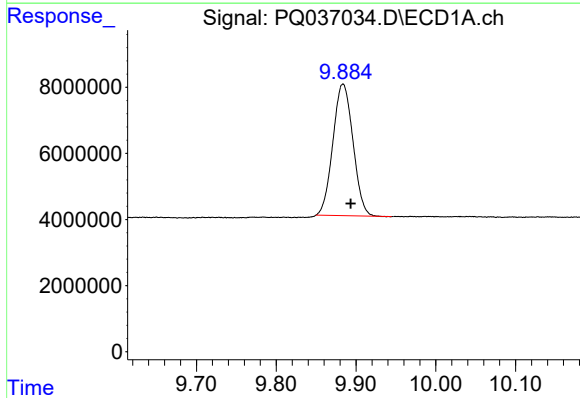
R.T.: 4.320 min
 Delta R.T.: -0.002 min
 Response: 87597871
 Conc: 19.72 ng/ml

Instrument :
 ECD_Q
 ClientSampleId :
 A0C5B-SS1-4.5-5.0



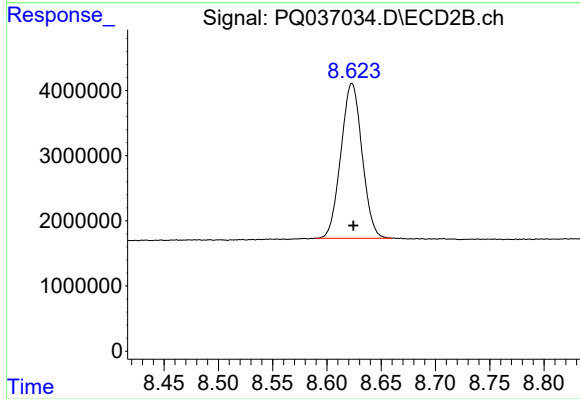
#1 Tetrachloro-m-xylene

R.T.: 3.697 min
 Delta R.T.: 0.004 min
 Response: 49938126
 Conc: 21.62 ng/ml



#2 Decachlorobiphenyl

R.T.: 9.884 min
 Delta R.T.: -0.010 min
 Response: 69533429
 Conc: 16.86 ng/ml



#2 Decachlorobiphenyl

R.T.: 8.623 min
 Delta R.T.: -0.001 min
 Response: 32234176
 Conc: 17.16 ng/ml