

Data Path : Z:\pestpcbsrv\HPCHEM1\ECD_Q\Data\PQ020719\
 Data File : PQ037063.D
 Signal(s) : Signal #1: ECD1A.ch Signal #2: ECD2B.ch
 Acq On : 08 Feb 2019 03:37
 Operator : SM\SJ
 Sample : K1403-01
 Misc :
 ALS Vial : 50 Sample Multiplier: 1

Instrument :
 ECD_Q
 ClientSampleId :

Integration File signal 1: autoint1.e
 Integration File signal 2: autoint2.e
 Quant Time: Feb 08 09:04:28 2019
 Quant Method : Z:\pestpcbsrv\HPCHEM1\ECD_Q\Method\PQ020619.M
 Quant Title : GC EXTRACTABLES
 QLast Update : Wed Feb 06 18:32:04 2019
 Response via : Initial Calibration
 Integrator: ChemStation

Volume Inj. : 2 µl
 Signal #1 Phase : ZB-MR1 Signal #2 Phase: ZB-MR2
 Signal #1 Info : 30Mx0.32mmx 0.50µ Signal #2 Info : 30M x 0.32mm x 0.25µm

Compound	RT#1	RT#2	Resp#1	Resp#2	ng/ml	ng/ml

System Monitoring Compounds						
1) SA Tetrachlo...	4.316	3.697	73496970	42052973	16.542	18.209
2) SA Decachlor...	9.871	8.618	40135329	28729633	9.734	15.291 #

Target Compounds

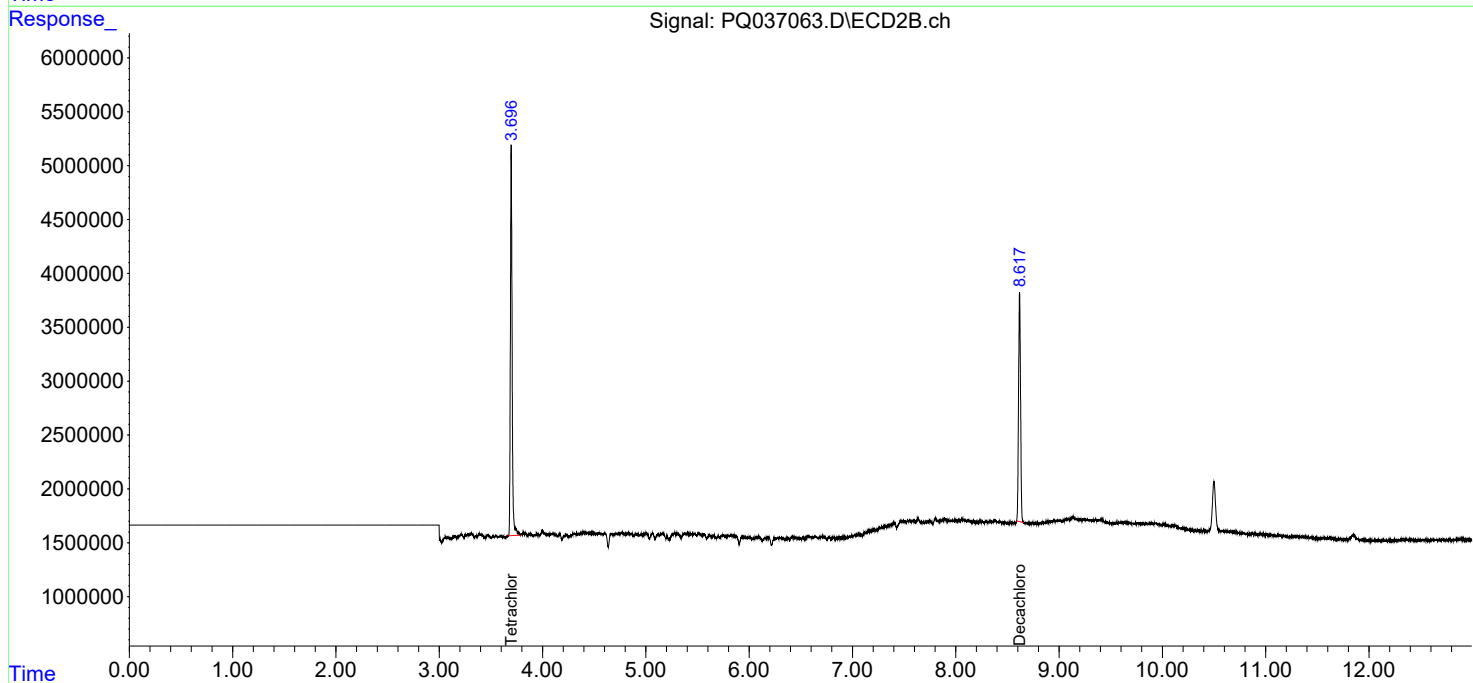
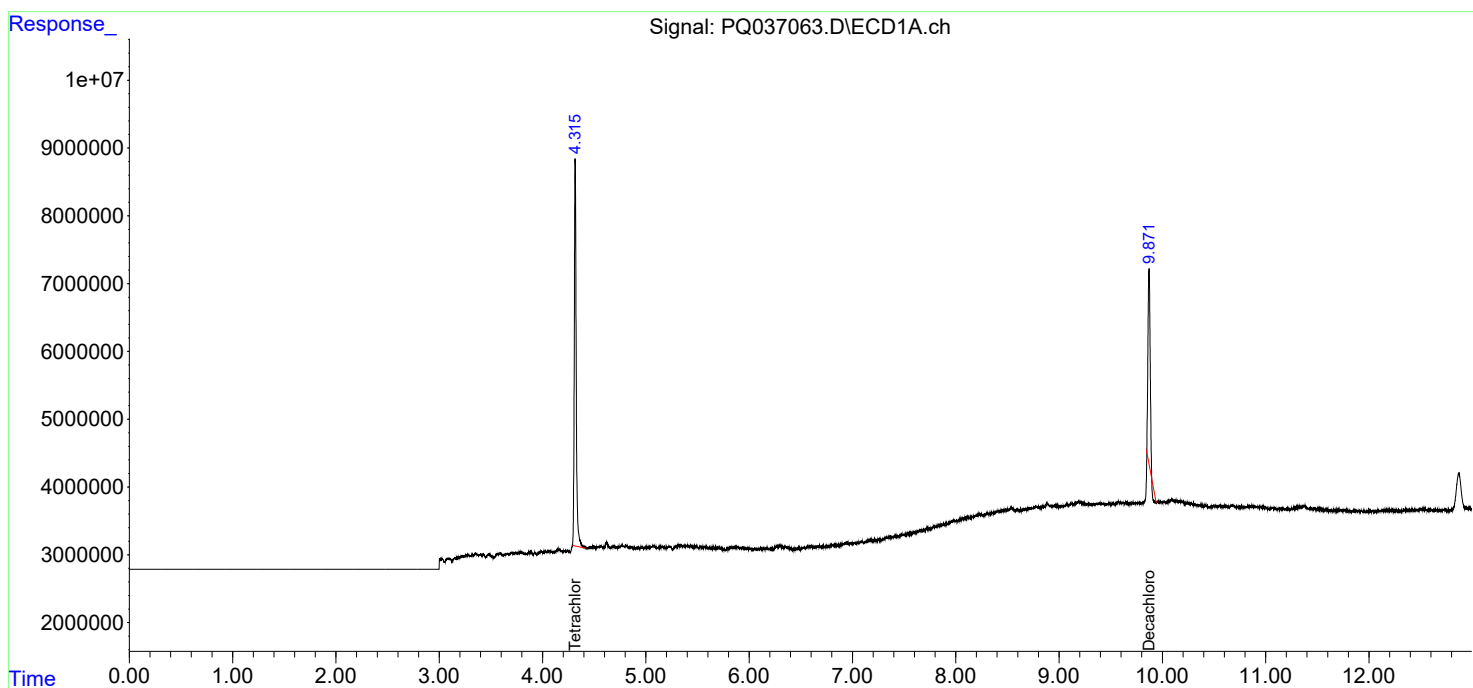
(f)=RT Delta > 1/2 Window (#)=Amounts differ by > 25% (m)=manual int.

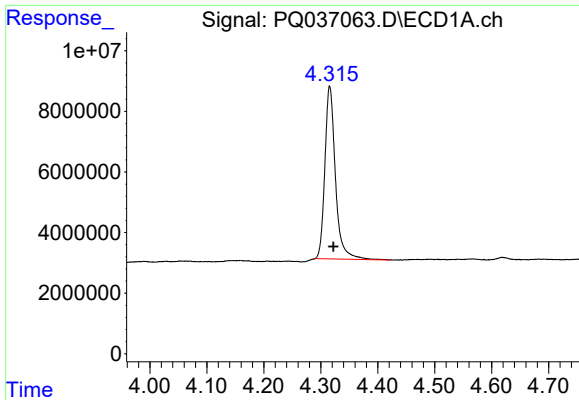
Data Path : Z:\pestpcbsrv\HPCHEM1\ECD_Q\Data\PQ020719\
 Data File : PQ037063.D
 Signal(s) : Signal #1: ECD1A.ch Signal #2: ECD2B.ch
 Acq On : 08 Feb 2019 03:37
 Operator : SM\SJ
 Sample : K1403-01
 Misc :
 ALS Vial : 50 Sample Multiplier: 1

Instrument :
 ECD_Q
 ClientSampled :

Integration File signal 1: autoint1.e
 Integration File signal 2: autoint2.e
 Quant Time: Feb 08 09:04:28 2019
 Quant Method : Z:\pestpcbsrv\HPCHEM1\ECD_Q\Method\PQ020619.M
 Quant Title : GC EXTRACTABLES
 QLast Update : Wed Feb 06 18:32:04 2019
 Response via : Initial Calibration
 Integrator: ChemStation

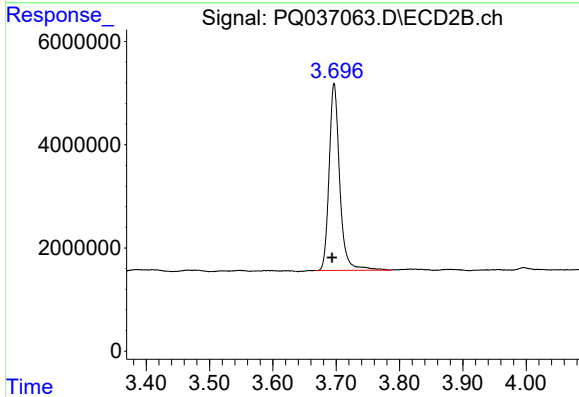
Volume Inj. : 2 µl
 Signal #1 Phase : ZB-MR1 Signal #2 Phase: ZB-MR2
 Signal #1 Info : 30Mx0.32mmx 0.50µ Signal #2 Info : 30M x 0.32mm x 0.25µm



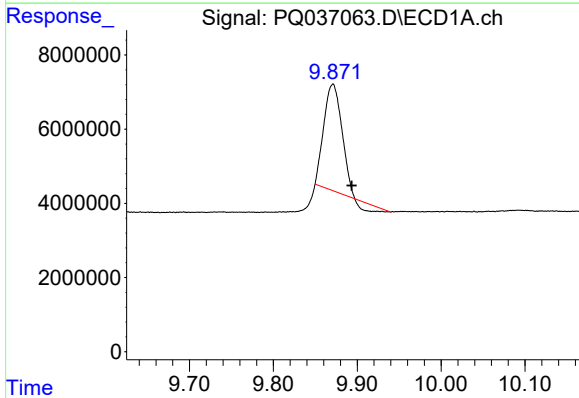


#1 Tetrachloro-m-xylene
 R.T.: 4.316 min
 Delta R.T.: -0.006 min
 Response: 73496970
 Conc: 16.54 ng/ml

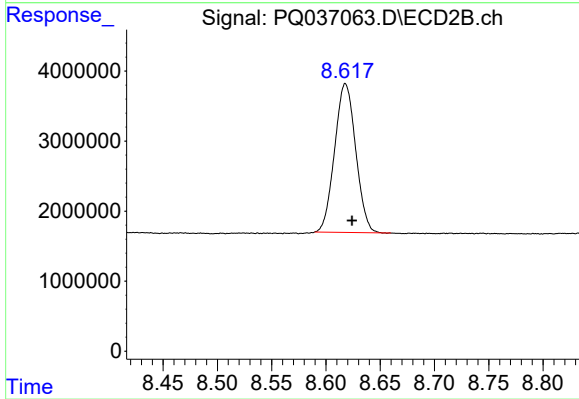
Instrument :
 ECD_Q
 ClientSampled :



#1 Tetrachloro-m-xylene
 R.T.: 3.697 min
 Delta R.T.: 0.003 min
 Response: 42052973
 Conc: 18.21 ng/ml



#2 Decachlorobiphenyl
 R.T.: 9.871 min
 Delta R.T.: -0.022 min
 Response: 40135329
 Conc: 9.73 ng/ml



#2 Decachlorobiphenyl
 R.T.: 8.618 min
 Delta R.T.: -0.006 min
 Response: 28729633
 Conc: 15.29 ng/ml