

Data Path : Z:\pestpcbsrv\HPCHEM1\ECD_Q\Data\PQ021319\
 Data File : PQ037239.D
 Signal(s) : Signal #1: ECD1A.ch Signal #2: ECD2B.ch
 Acq On : 13 Feb 2019 21:52
 Operator : SM\SJ
 Sample : K1343-23
 Misc :
 ALS Vial : 19 Sample Multiplier: 1

Instrument :
 ECD_Q
 ClientSampleId :
 JC-02-021119-L

Integration File signal 1: autoint1.e
 Integration File signal 2: autoint2.e
 Quant Time: Feb 14 01:05:29 2019
 Quant Method : Z:\pestpcbsrv\HPCHEM1\ECD_Q\Method\PQ021319.M
 Quant Title : GC EXTRACTABLES
 QLast Update : Wed Feb 13 16:51:51 2019
 Response via : Initial Calibration
 Integrator: ChemStation

Volume Inj. : 2 µl
 Signal #1 Phase : ZB-MR2 Signal #2 Phase: ZB-MR2
 Signal #1 Info : 30Mx0.32mmx 0.50µ Signal #2 Info : 30M x 0.32mm x 0.25µm

Compound	RT#1	RT#2	Resp#1	Resp#2	ng/ml	ng/ml

System Monitoring Compounds						
1) SA Tetrachlo...	4.281	3.679	82707380	41445707	14.181	13.678
2) SA Decachlor...	9.805	8.590	66196057	24339181	13.515	11.199
Target Compounds						
3) L1 AR-1016-1	5.428	4.724	8547021	1793424	48.280	19.074 #
4) L1 AR-1016-2	5.460	4.777	11551466	3772234	42.470	26.824 #
5) L1 AR-1016-3	5.504	4.970	14265655	4589996	89.422	65.304 #
6) L1 AR-1016-4	5.611	4.970	7583310	4589996	56.224	82.932 #
7) L1 AR-1016-5	5.935	5.130	13622257	2230729	105.128	30.888 #
9) L2 AR-1221-2	4.584	0.000	1270274	0	18.373	N.D. #
10) L2 AR-1221-3	4.584	4.093	1270274	1536514	5.220	12.069 #
11) L3 AR-1232-1	4.584	4.093	1270274	1536514	13.099	29.955 #
12) L3 AR-1232-2	5.170	4.777	21070961	3772234	423.470	68.781 #
13) L3 AR-1232-3	5.460	4.970	11551466	4589996	109.447	171.496 #
14) L3 AR-1232-4	5.611	5.003	7583310	623955	153.379	27.033 #
15) L3 AR-1232-5	5.726	5.130	5055401	2230729	140.253	89.442 #
16) L4 AR-1242-1	5.428	4.724	8547021	1793424	73.366	28.827 #
17) L4 AR-1242-2	5.460	4.777	11551466	3772234	62.985	39.222 #
18) L4 AR-1242-3	5.504	4.970	14265655	4589996	132.264	96.525 #
19) L4 AR-1242-4	5.611	5.003	7583310	623955	85.829	13.829 #
21) L5 AR-1248-1	5.428	4.724	8547021	1793424	76.324	30.139 #
22) L5 AR-1248-2	5.726	4.970	5055401	4589996	32.084	57.260 #
23) L5 AR-1248-3	5.935	5.003	13622257	623955	77.277	7.698 #
24) L5 AR-1248-4	0.000	5.130	0	2230729	N.D.	22.773 #
27) L6 AR-1254-2	6.486	5.672	4261137	2437096	4.702	6.818 #
28) L6 AR-1254-3	6.852	0.000	7329228	0	7.471	N.D. #
29) L6 AR-1254-4	7.129	0.000	1218537	0	1.648	N.D. #
30) L6 AR-1254-5	7.545	0.000	2864239	0	3.771	N.D. #
31) L7 AR-1260-1	7.003	0.000	4029404	0	15.396	N.D. #
32) L7 AR-1260-2	7.263	0.000	4253280	0	12.787	N.D. #
33) L7 AR-1260-3	7.617	0.000	932933	0	4.348	N.D. #
34) L7 AR-1260-4	7.839	0.000	1973082	0	8.234	N.D. #
35) L7 AR-1260-5	8.149	7.240	2406223	2458696	4.846	9.570 #
36) L8 AR-1262-1	7.617	0.000	932933	0	2.164	N.D. #
37) L8 AR-1262-2	8.149	7.240	2406223	2458696	3.246	6.771 #

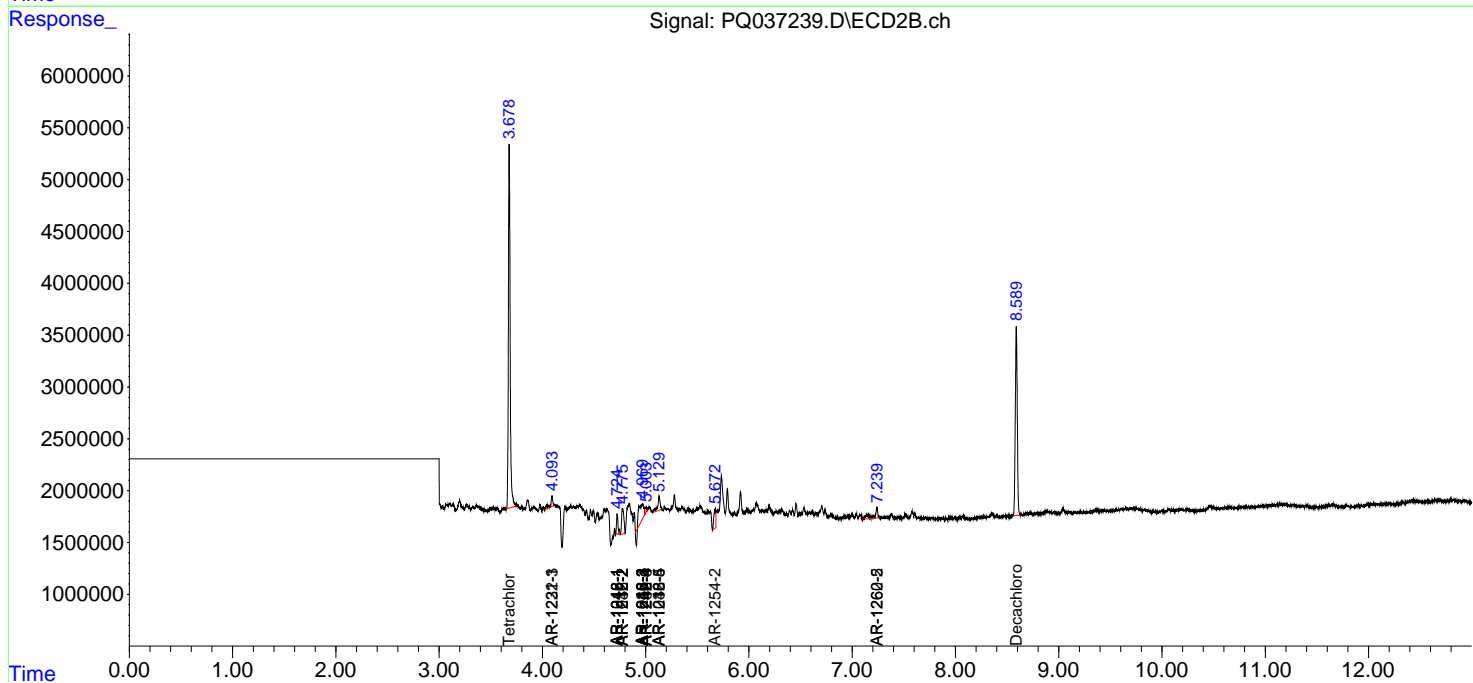
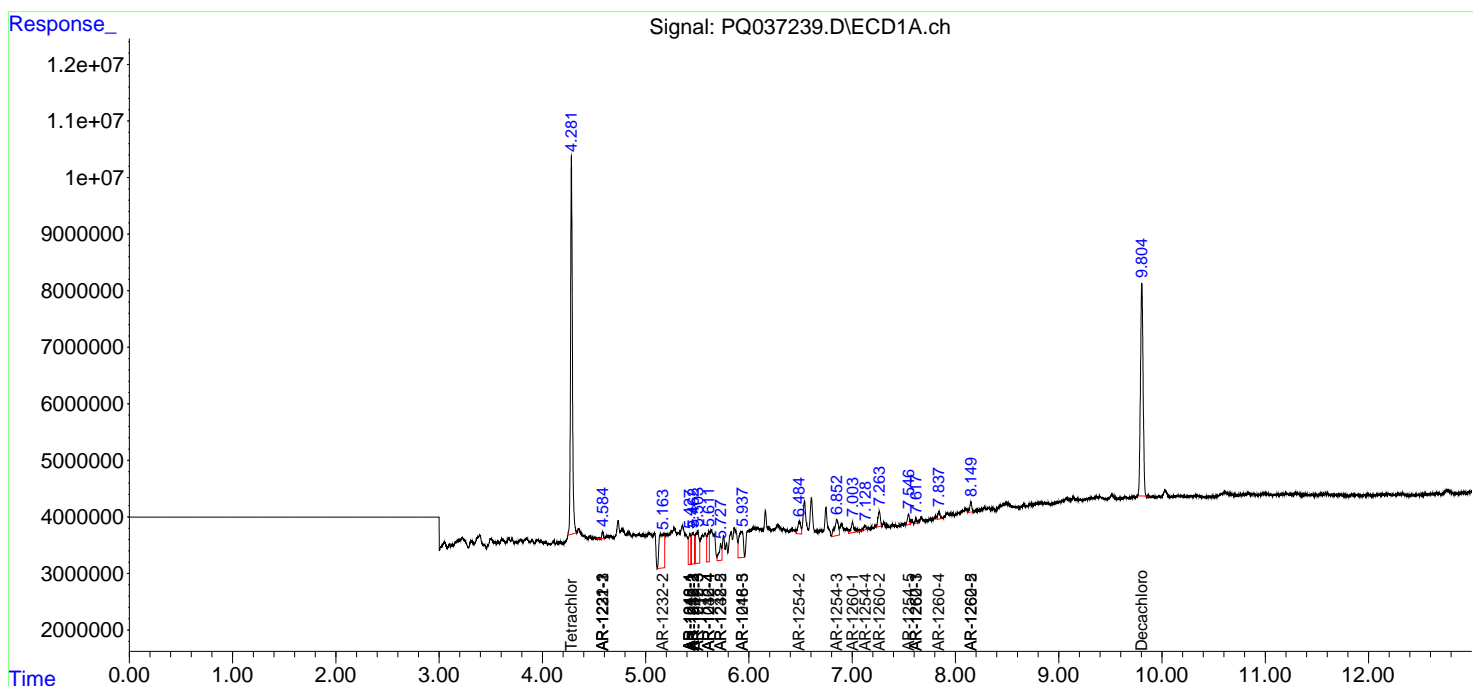
(f)=RT Delta > 1/2 Window (#)=Amounts differ by > 25% (m)=manual int.

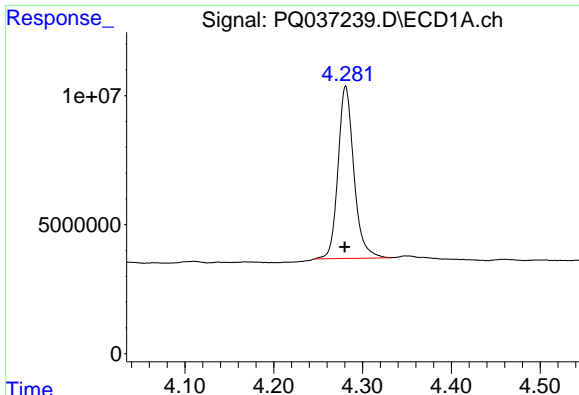
Data Path : Z:\pestpcbsrv\HPCHEM1\ECD_Q\Data\PQ021319\
 Data File : PQ037239.D
 Signal(s) : Signal #1: ECD1A.ch Signal #2: ECD2B.ch
 Acq On : 13 Feb 2019 21:52
 Operator : SM\SJ
 Sample : K1343-23
 Misc :
 ALS Vial : 19 Sample Multiplier: 1

Instrument :
 ECD_Q
 ClientSampled :
 JC-02-021119-L

Integration File signal 1: autoint1.e
 Integration File signal 2: autoint2.e
 Quant Time: Feb 14 01:05:29 2019
 Quant Method : Z:\pestpcbsrv\HPCHEM1\ECD_Q\Method\PQ021319.M
 Quant Title : GC EXTRACTABLES
 QLast Update : Wed Feb 13 16:51:51 2019
 Response via : Initial Calibration
 Integrator: ChemStation

Volume Inj. : 2 µl
 Signal #1 Phase : ZB-MR1 Signal #2 Phase: ZB-MR2
 Signal #1 Info : 30Mx0.32mmx 0.50µ Signal #2 Info : 30M x 0.32mm x 0.25µm

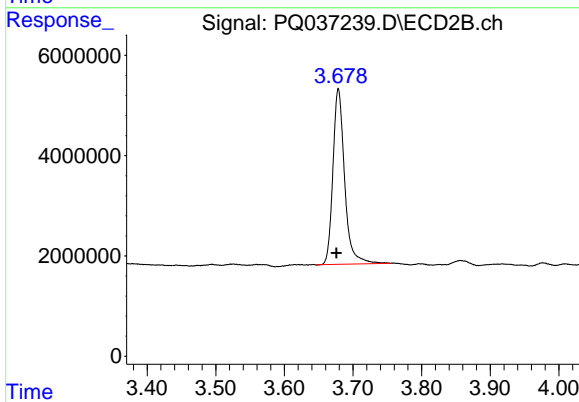




#1 Tetrachloro-m-xylene

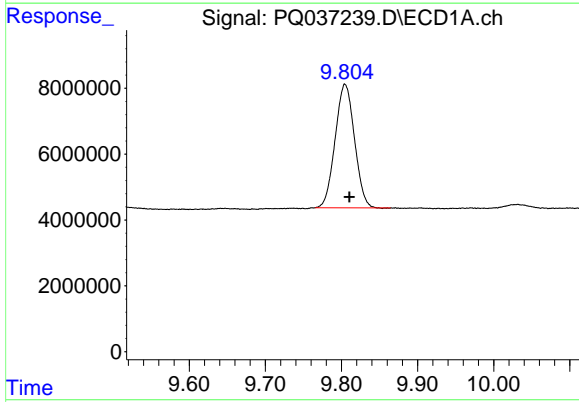
R.T.: 4.281 min
 Delta R.T.: 0.001 min
 Response: 82707380
 Conc: 14.18 ng/ml

Instrument :
 ECD_Q
 ClientSampleId :
 JC-02-021119-L



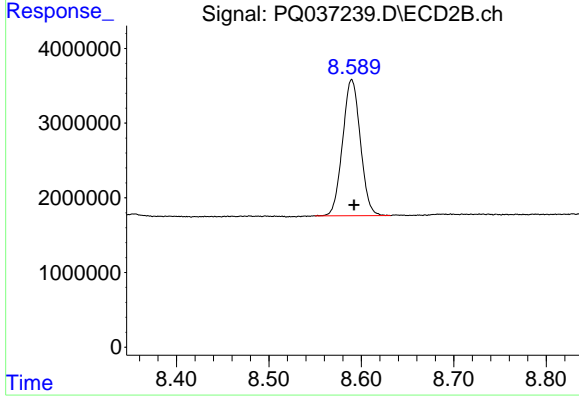
#1 Tetrachloro-m-xylene

R.T.: 3.679 min
 Delta R.T.: 0.003 min
 Response: 41445707
 Conc: 13.68 ng/ml



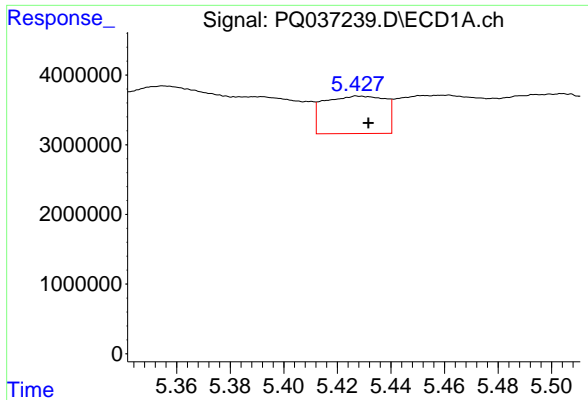
#2 Decachlorobiphenyl

R.T.: 9.805 min
 Delta R.T.: -0.006 min
 Response: 66196057
 Conc: 13.52 ng/ml



#2 Decachlorobiphenyl

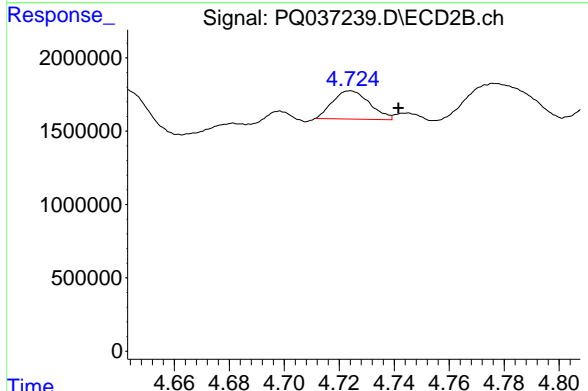
R.T.: 8.590 min
 Delta R.T.: -0.002 min
 Response: 24339181
 Conc: 11.20 ng/ml



#3 AR-1016-1

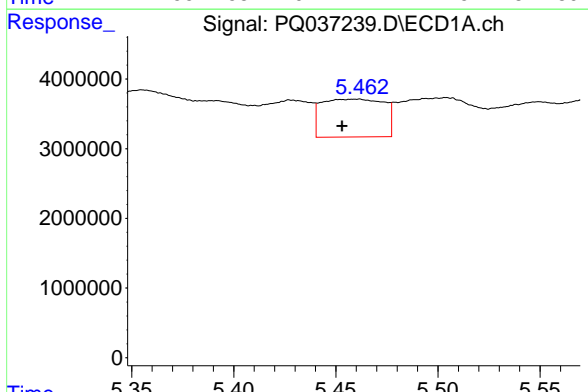
R.T.: 5.428 min
 Delta R.T.: -0.004 min
 Response: 8547021
 Conc: 48.28 ng/ml

Instrument :
 ECD_Q
 ClientSampleId :
 JC-02-021119-L



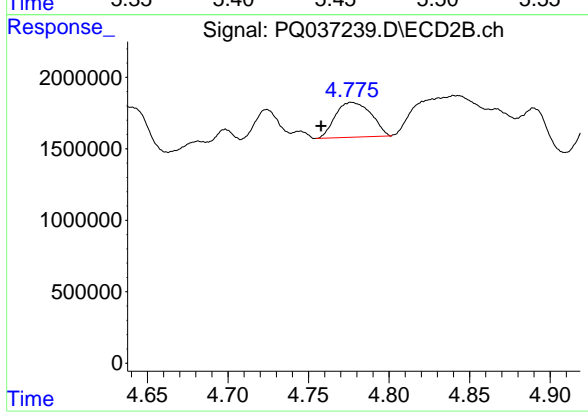
#3 AR-1016-1

R.T.: 4.724 min
 Delta R.T.: -0.017 min
 Response: 1793424
 Conc: 19.07 ng/ml



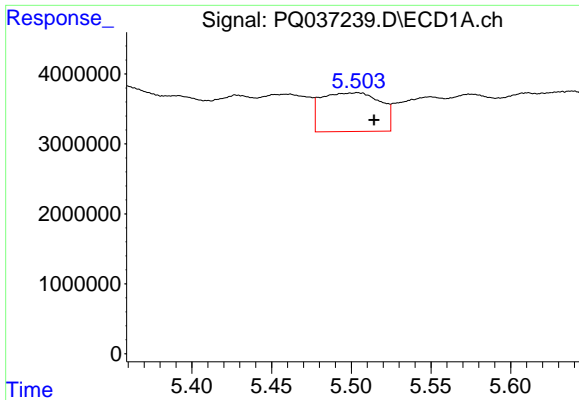
#4 AR-1016-2

R.T.: 5.460 min
 Delta R.T.: 0.007 min
 Response: 11551466
 Conc: 42.47 ng/ml



#4 AR-1016-2

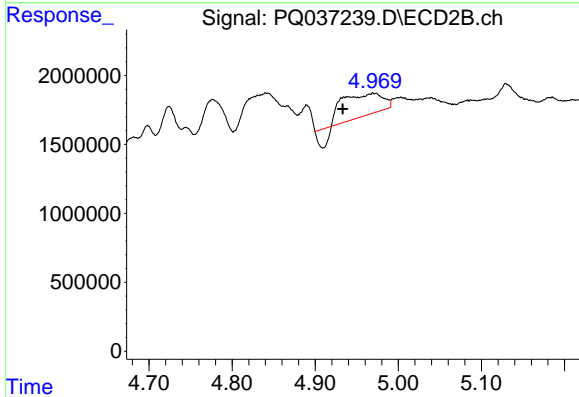
R.T.: 4.777 min
 Delta R.T.: 0.019 min
 Response: 3772234
 Conc: 26.82 ng/ml



#5 AR-1016-3

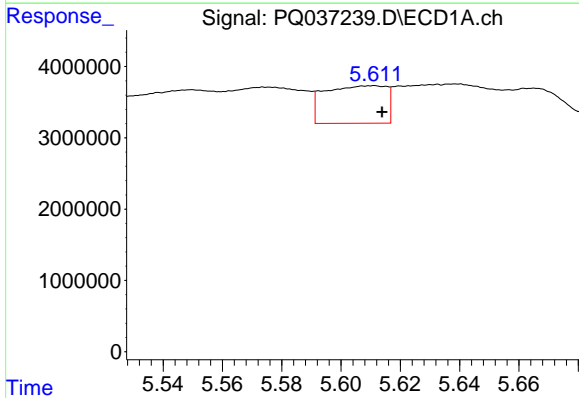
R.T.: 5.504 min
 Delta R.T.: -0.010 min
 Response: 14265655
 Conc: 89.42 ng/ml

Instrument :
 ECD_Q
 ClientSampleId :
 JC-02-021119-L



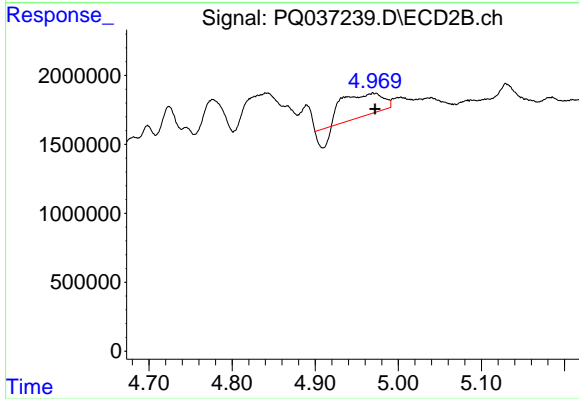
#5 AR-1016-3

R.T.: 4.970 min
 Delta R.T.: 0.037 min
 Response: 4589996
 Conc: 65.30 ng/ml



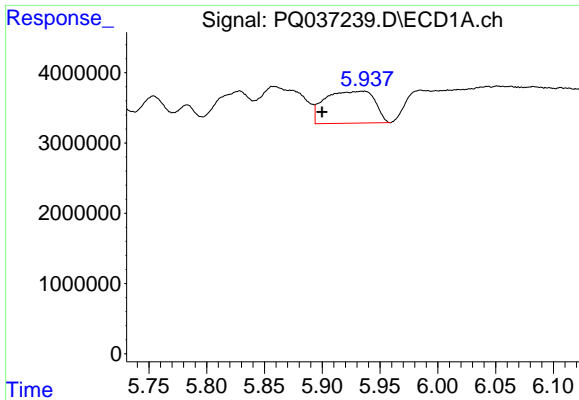
#6 AR-1016-4

R.T.: 5.611 min
 Delta R.T.: -0.003 min
 Response: 7583310
 Conc: 56.22 ng/ml



#6 AR-1016-4

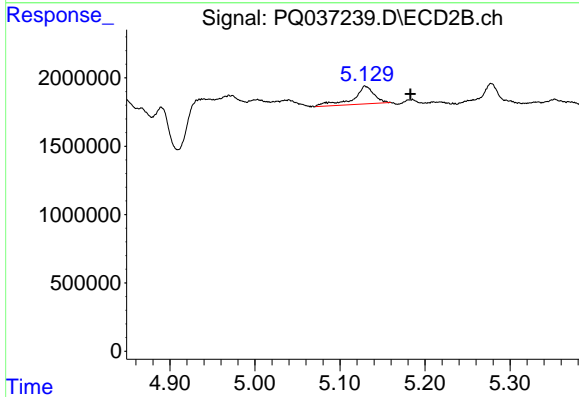
R.T.: 4.970 min
 Delta R.T.: -0.002 min
 Response: 4589996
 Conc: 82.93 ng/ml



#7 AR-1016-5

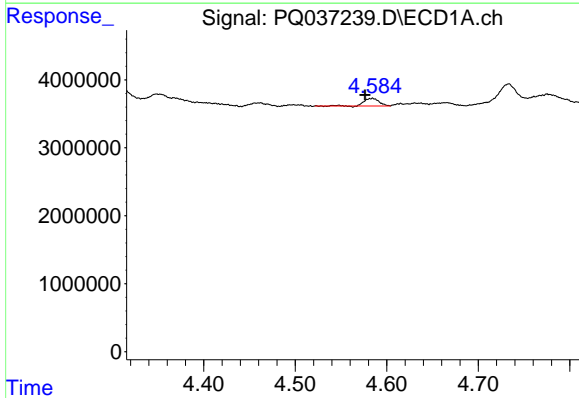
R.T.: 5.935 min
 Delta R.T.: 0.036 min
 Response: 13622257
 Conc: 105.13 ng/ml

Instrument :
 ECD_Q
 ClientSampleId :
 JC-02-021119-L



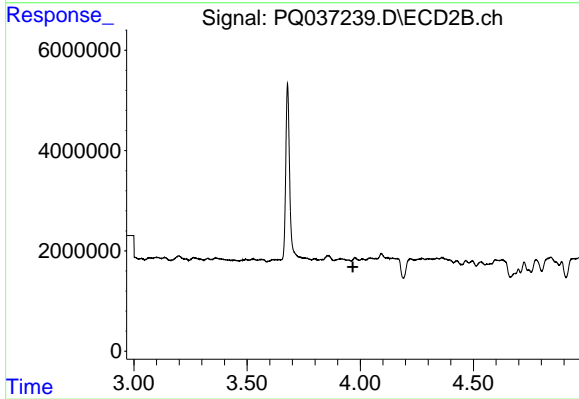
#7 AR-1016-5

R.T.: 5.130 min
 Delta R.T.: -0.053 min
 Response: 2230729
 Conc: 30.89 ng/ml



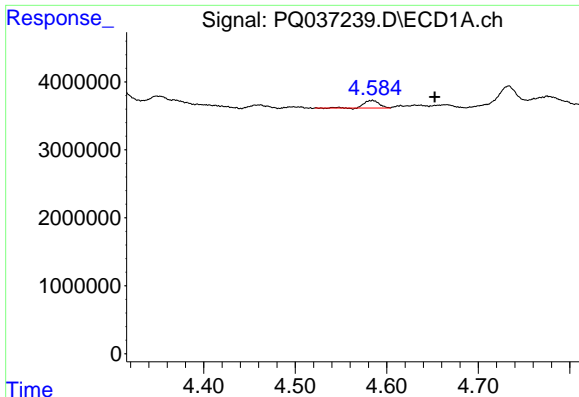
#9 AR-1221-2

R.T.: 4.584 min
 Delta R.T.: 0.008 min
 Response: 1270274
 Conc: 18.37 ng/ml



#9 AR-1221-2

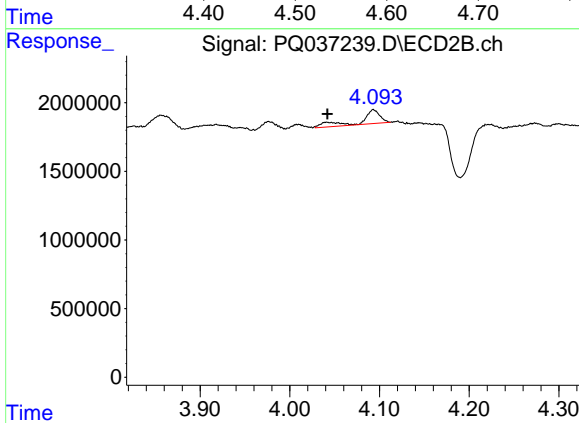
R.T.: 0.000 min
 Exp R.T. : 3.968 min
 Response: 0
 Conc: N.D.



#10 AR-1221-3

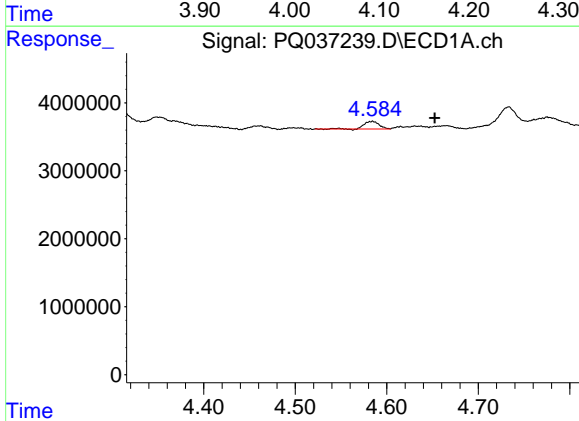
R.T.: 4.584 min
 Delta R.T.: -0.068 min
 Response: 1270274
 Conc: 5.22 ng/ml

Instrument :
 ECD_Q
 ClientSampleId :
 JC-02-021119-L



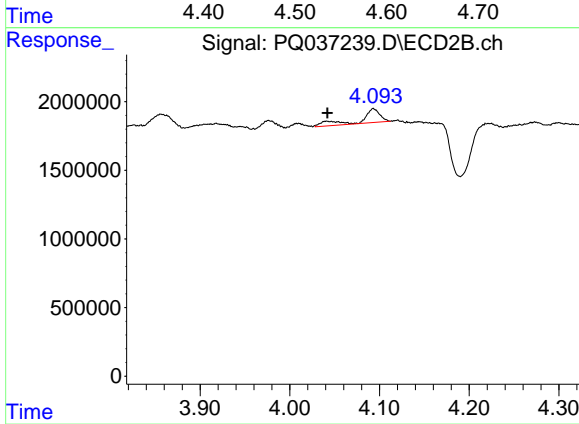
#10 AR-1221-3

R.T.: 4.093 min
 Delta R.T.: 0.051 min
 Response: 1536514
 Conc: 12.07 ng/ml



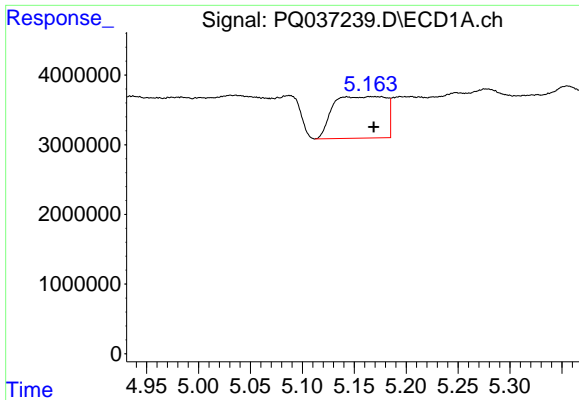
#11 AR-1232-1

R.T.: 4.584 min
 Delta R.T.: -0.068 min
 Response: 1270274
 Conc: 13.10 ng/ml



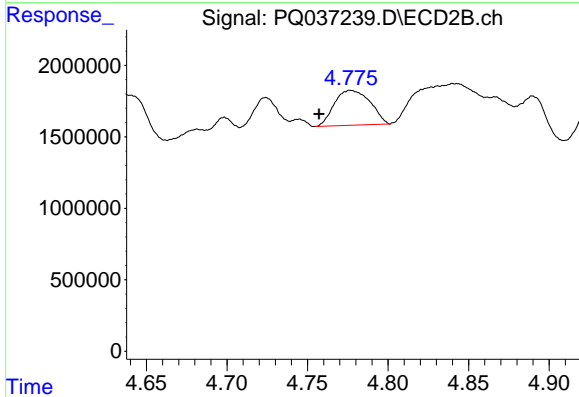
#11 AR-1232-1

R.T.: 4.093 min
 Delta R.T.: 0.051 min
 Response: 1536514
 Conc: 29.96 ng/ml

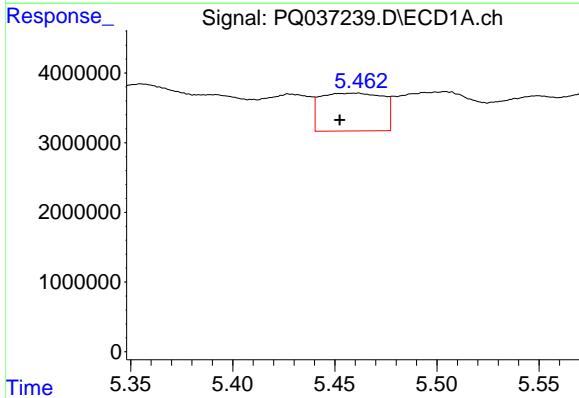


#12 AR-1232-2
 R.T.: 5.170 min
 Delta R.T.: 0.001 min
 Response: 21070961
 Conc: 423.47 ng/ml

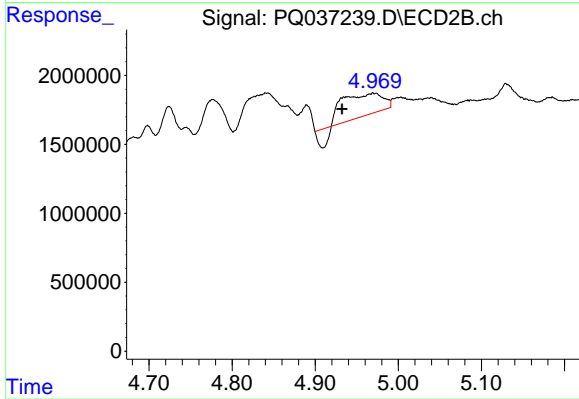
Instrument :
 ECD_Q
ClientSampleId :
 JC-02-021119-L



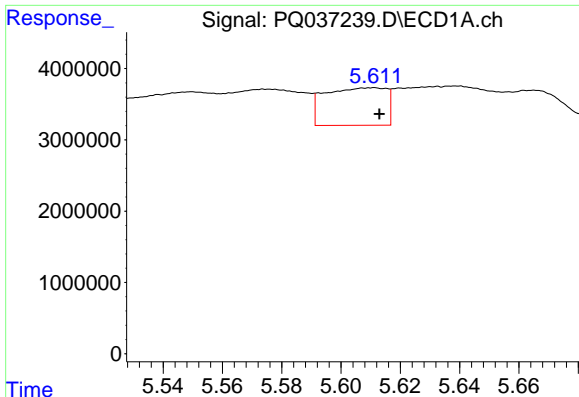
#12 AR-1232-2
 R.T.: 4.777 min
 Delta R.T.: 0.020 min
 Response: 3772234
 Conc: 68.78 ng/ml



#13 AR-1232-3
 R.T.: 5.460 min
 Delta R.T.: 0.008 min
 Response: 11551466
 Conc: 109.45 ng/ml



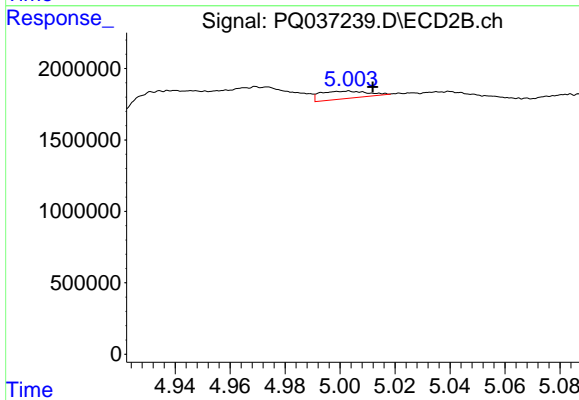
#13 AR-1232-3
 R.T.: 4.970 min
 Delta R.T.: 0.037 min
 Response: 4589996
 Conc: 171.50 ng/ml



#14 AR-1232-4

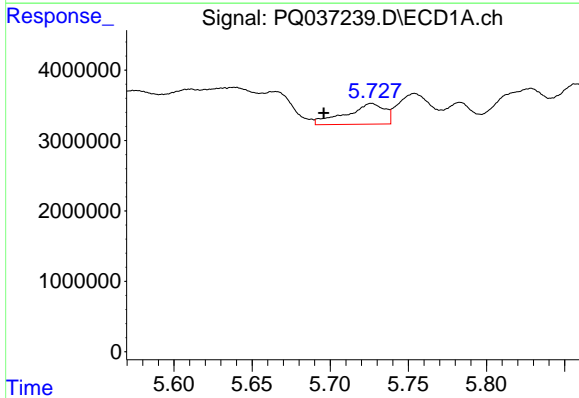
R.T.: 5.611 min
 Delta R.T.: -0.002 min
 Response: 7583310
 Conc: 153.38 ng/ml

Instrument :
 ECD_Q
 ClientSampleId :
 JC-02-021119-L



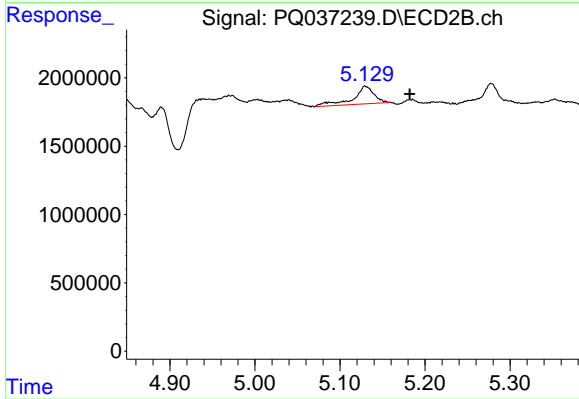
#14 AR-1232-4

R.T.: 5.003 min
 Delta R.T.: -0.009 min
 Response: 623955
 Conc: 27.03 ng/ml



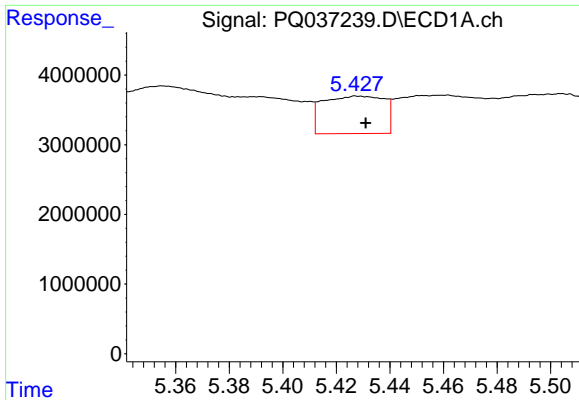
#15 AR-1232-5

R.T.: 5.726 min
 Delta R.T.: 0.031 min
 Response: 5055401
 Conc: 140.25 ng/ml



#15 AR-1232-5

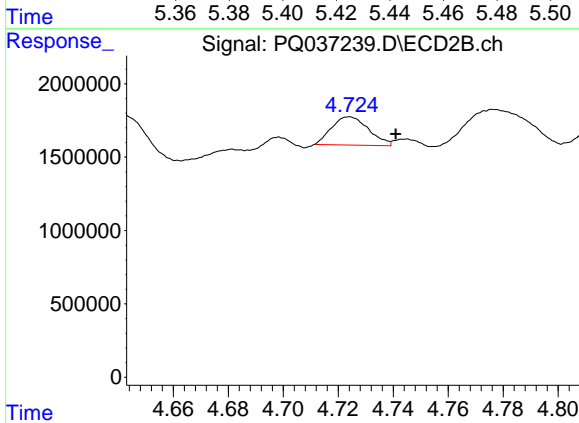
R.T.: 5.130 min
 Delta R.T.: -0.053 min
 Response: 2230729
 Conc: 89.44 ng/ml



#16 AR-1242-1

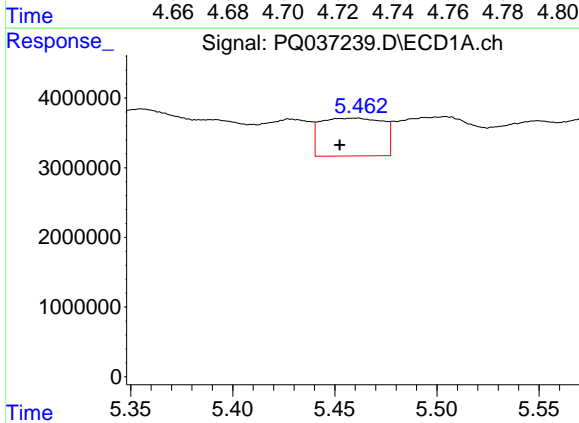
R.T.: 5.428 min
 Delta R.T.: -0.003 min
 Response: 8547021
 Conc: 73.37 ng/ml

Instrument :
 ECD_Q
 ClientSampleId :
 JC-02-021119-L



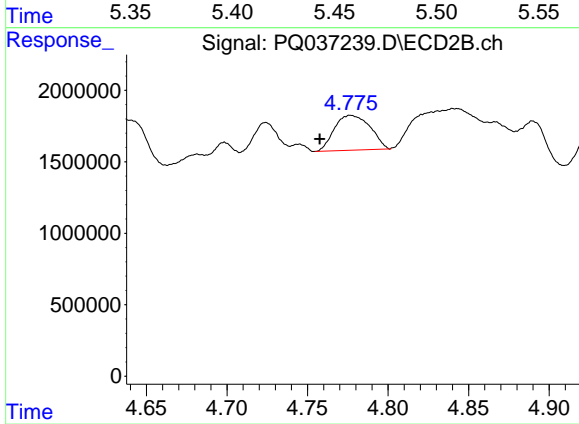
#16 AR-1242-1

R.T.: 4.724 min
 Delta R.T.: -0.017 min
 Response: 1793424
 Conc: 28.83 ng/ml



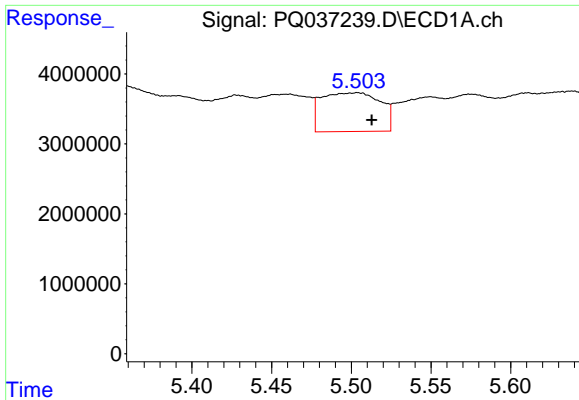
#17 AR-1242-2

R.T.: 5.460 min
 Delta R.T.: 0.008 min
 Response: 11551466
 Conc: 62.98 ng/ml



#17 AR-1242-2

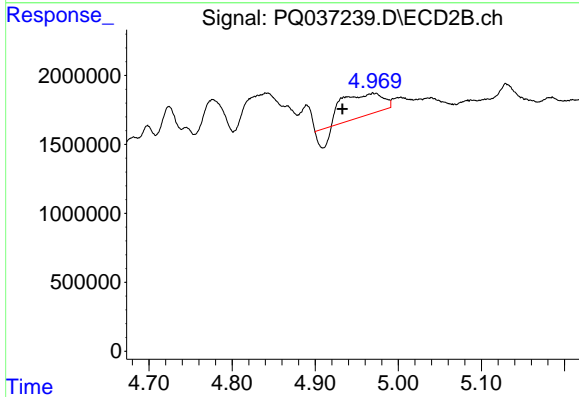
R.T.: 4.777 min
 Delta R.T.: 0.019 min
 Response: 3772234
 Conc: 39.22 ng/ml



#18 AR-1242-3

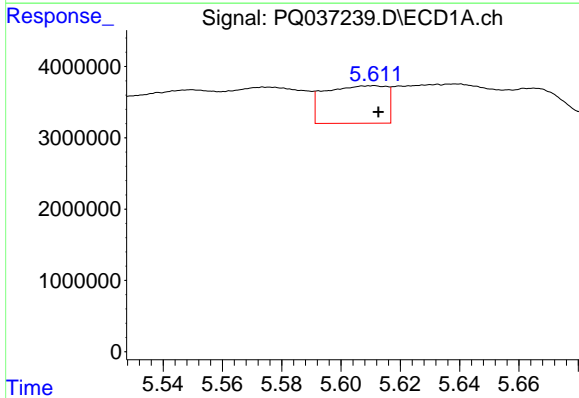
R.T.: 5.504 min
 Delta R.T.: -0.009 min
 Response: 14265655
 Conc: 132.26 ng/ml

Instrument :
 ECD_Q
 ClientSampleId :
 JC-02-021119-L



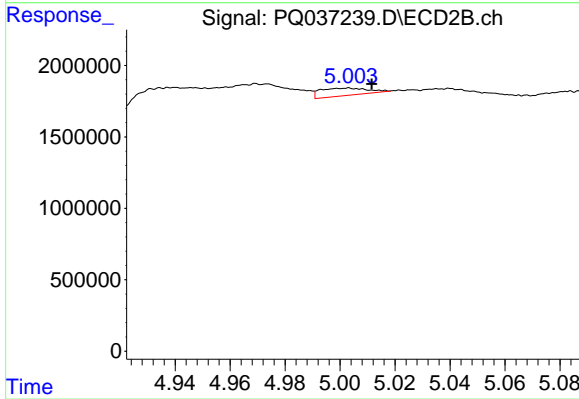
#18 AR-1242-3

R.T.: 4.970 min
 Delta R.T.: 0.037 min
 Response: 4589996
 Conc: 96.53 ng/ml



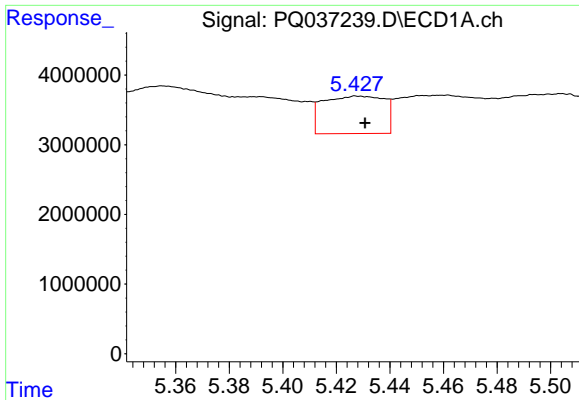
#19 AR-1242-4

R.T.: 5.611 min
 Delta R.T.: -0.002 min
 Response: 7583310
 Conc: 85.83 ng/ml



#19 AR-1242-4

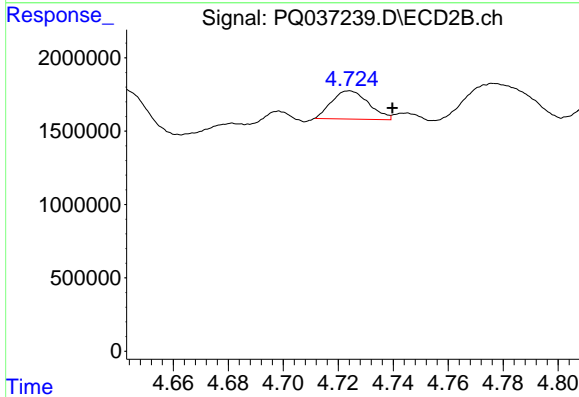
R.T.: 5.003 min
 Delta R.T.: -0.008 min
 Response: 623955
 Conc: 13.83 ng/ml



#21 AR-1248-1

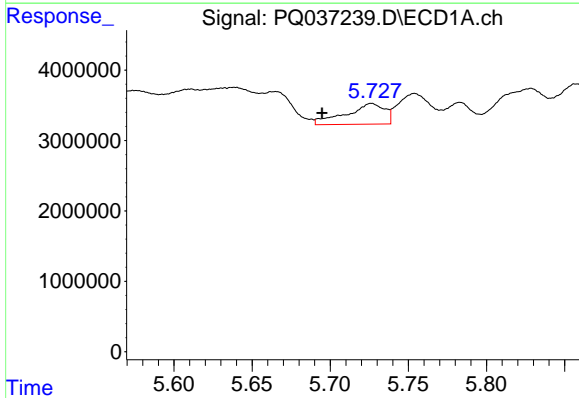
R.T.: 5.428 min
 Delta R.T.: -0.003 min
 Response: 8547021
 Conc: 76.32 ng/ml

Instrument :
 ECD_Q
 ClientSampleId :
 JC-02-021119-L



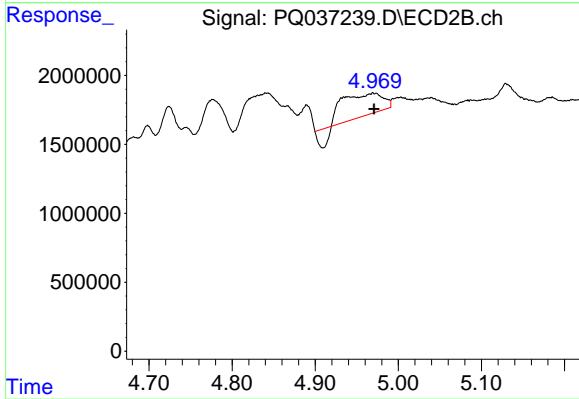
#21 AR-1248-1

R.T.: 4.724 min
 Delta R.T.: -0.016 min
 Response: 1793424
 Conc: 30.14 ng/ml



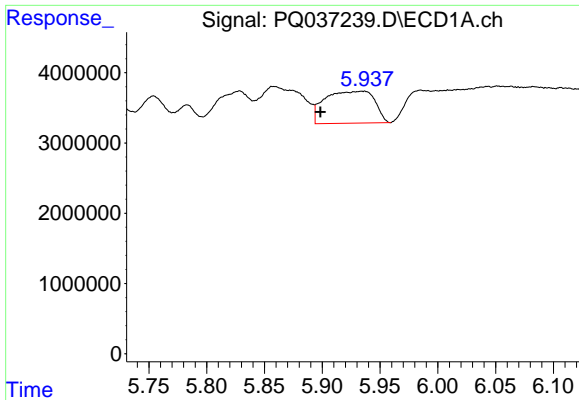
#22 AR-1248-2

R.T.: 5.726 min
 Delta R.T.: 0.032 min
 Response: 5055401
 Conc: 32.08 ng/ml



#22 AR-1248-2

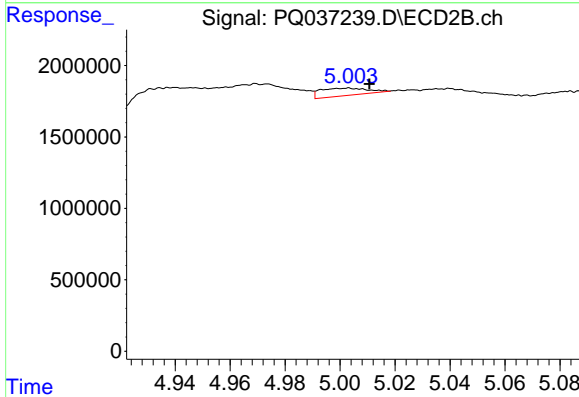
R.T.: 4.970 min
 Delta R.T.: 0.000 min
 Response: 4589996
 Conc: 57.26 ng/ml



#23 AR-1248-3

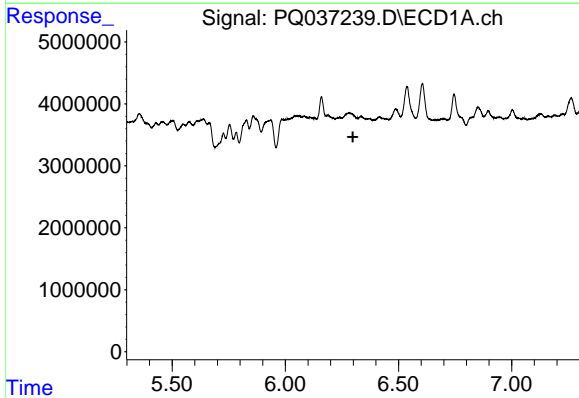
R.T.: 5.935 min
 Delta R.T.: 0.037 min
 Response: 13622257
 Conc: 77.28 ng/ml

Instrument :
 ECD_Q
 ClientSampleId :
 JC-02-021119-L



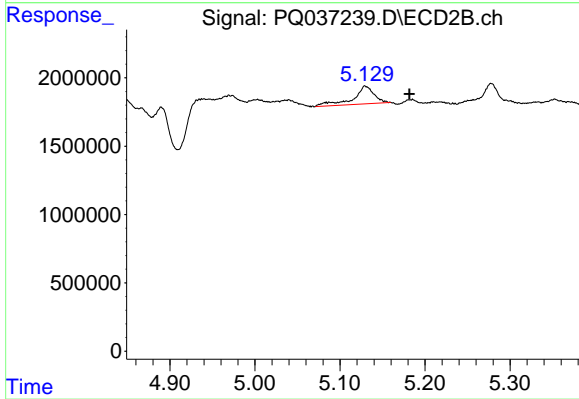
#23 AR-1248-3

R.T.: 5.003 min
 Delta R.T.: -0.008 min
 Response: 623955
 Conc: 7.70 ng/ml



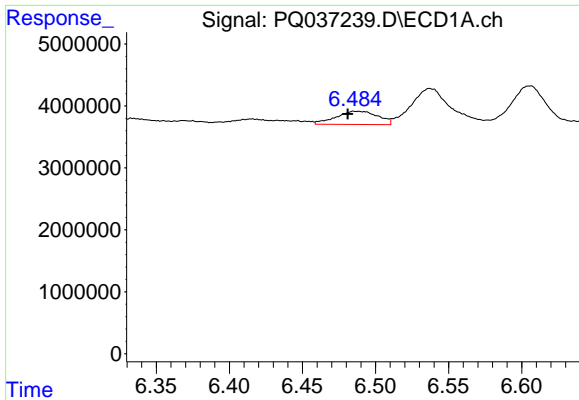
#24 AR-1248-4

R.T.: 0.000 min
 Exp R.T. : 6.298 min
 Response: 0
 Conc: N.D.



#24 AR-1248-4

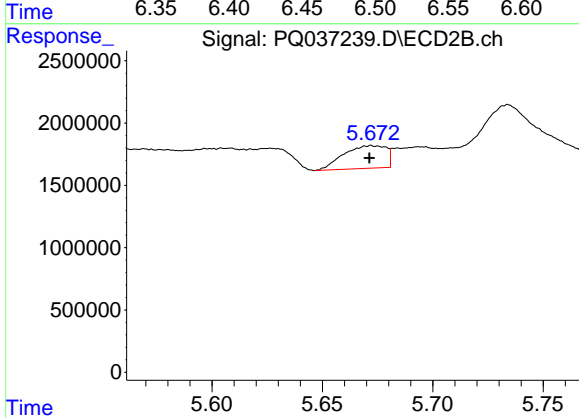
R.T.: 5.130 min
 Delta R.T.: -0.052 min
 Response: 2230729
 Conc: 22.77 ng/ml



#27 AR-1254-2

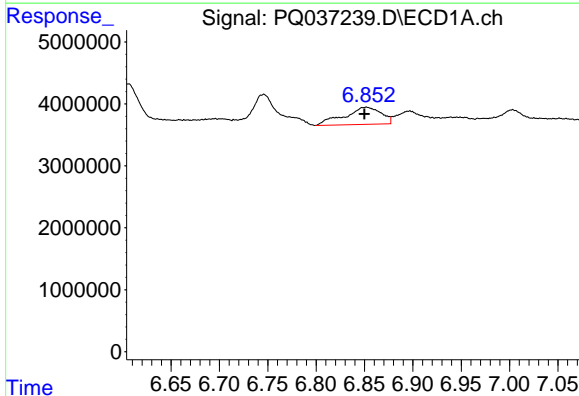
R.T.: 6.486 min
 Delta R.T.: 0.005 min
 Response: 4261137
 Conc: 4.70 ng/ml

Instrument :
 ECD_Q
 ClientSampleId :
 JC-02-021119-L



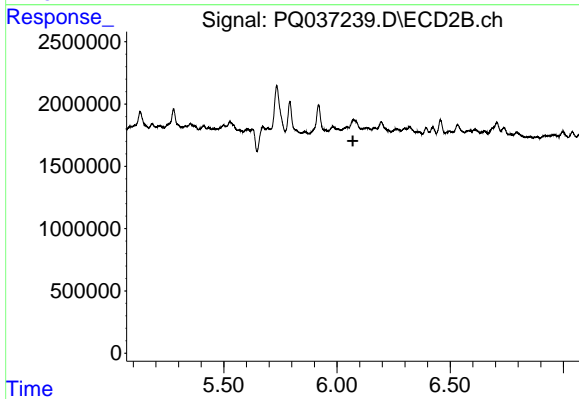
#27 AR-1254-2

R.T.: 5.672 min
 Delta R.T.: 0.000 min
 Response: 2437096
 Conc: 6.82 ng/ml



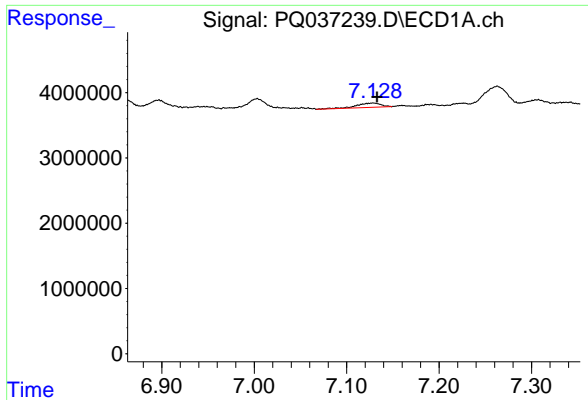
#28 AR-1254-3

R.T.: 6.852 min
 Delta R.T.: 0.002 min
 Response: 7329228
 Conc: 7.47 ng/ml



#28 AR-1254-3

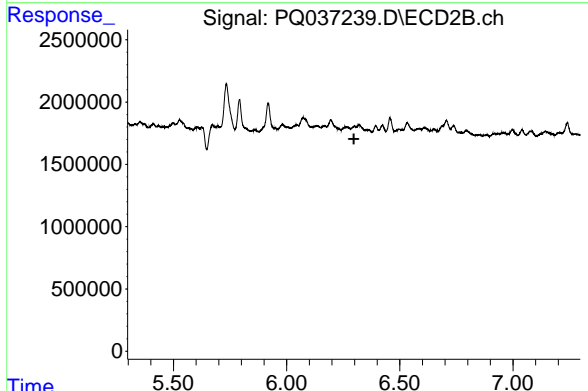
R.T.: 0.000 min
 Exp R.T. : 6.070 min
 Response: 0
 Conc: N.D.



#29 AR-1254-4

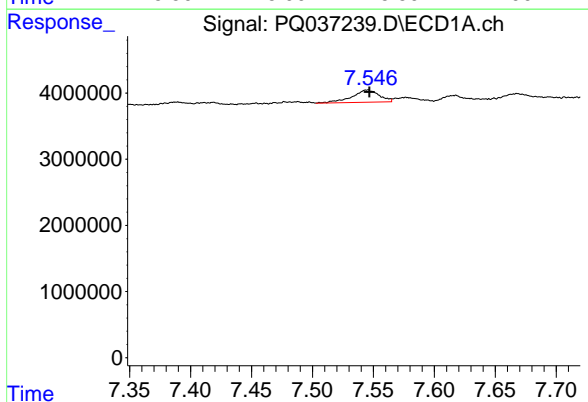
R.T.: 7.129 min
 Delta R.T.: -0.004 min
 Response: 1218537
 Conc: 1.65 ng/ml

Instrument :
 ECD_Q
 ClientSampleId :
 JC-02-021119-L



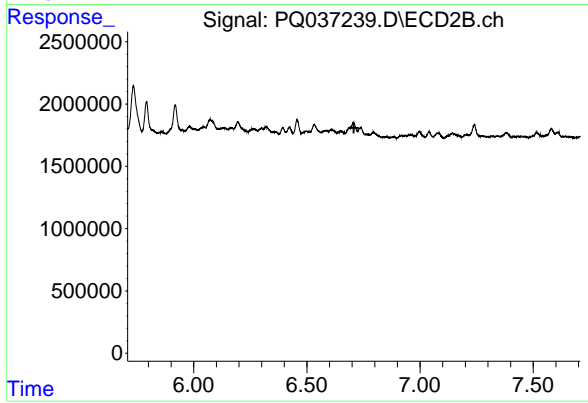
#29 AR-1254-4

R.T.: 0.000 min
 Exp R.T. : 6.297 min
 Response: 0
 Conc: N.D.



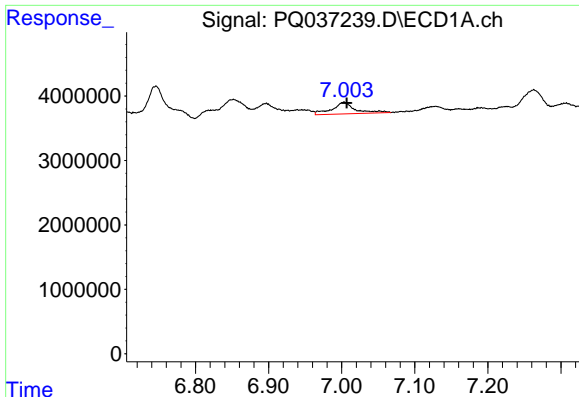
#30 AR-1254-5

R.T.: 7.545 min
 Delta R.T.: -0.002 min
 Response: 2864239
 Conc: 3.77 ng/ml



#30 AR-1254-5

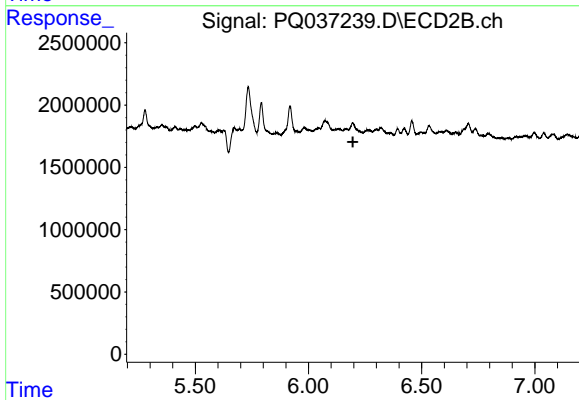
R.T.: 0.000 min
 Exp R.T. : 6.708 min
 Response: 0
 Conc: N.D.



#31 AR-1260-1

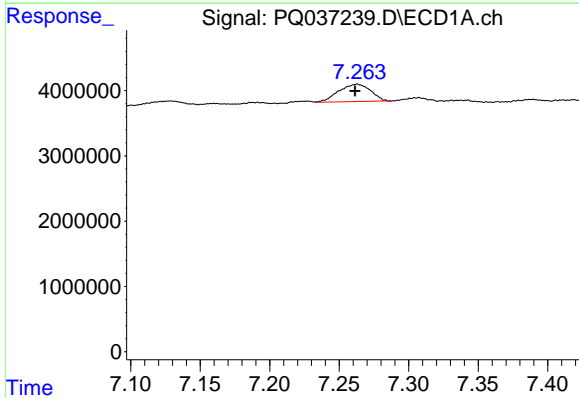
R.T.: 7.003 min
 Delta R.T.: -0.004 min
 Response: 4029404
 Conc: 15.40 ng/ml

Instrument :
 ECD_Q
 ClientSampleId :
 JC-02-021119-L



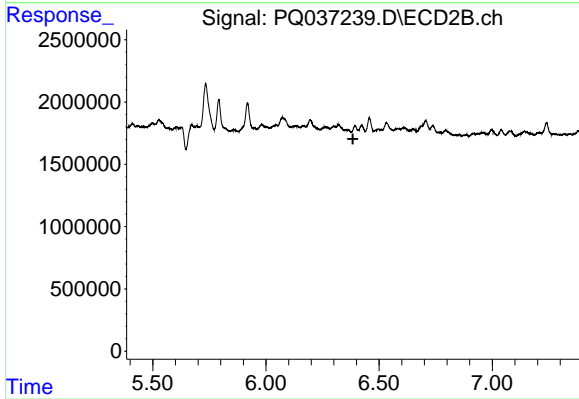
#31 AR-1260-1

R.T.: 0.000 min
 Exp R.T. : 6.196 min
 Response: 0
 Conc: N.D.



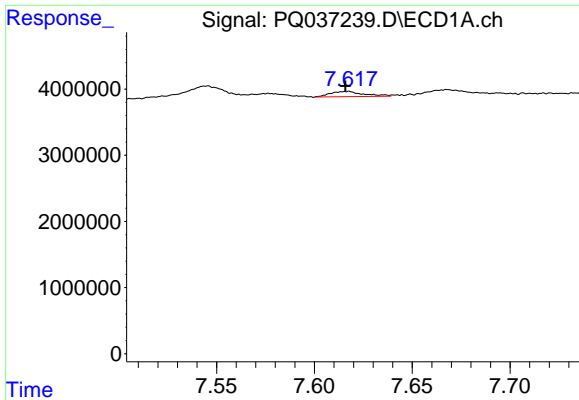
#32 AR-1260-2

R.T.: 7.263 min
 Delta R.T.: 0.002 min
 Response: 4253280
 Conc: 12.79 ng/ml



#32 AR-1260-2

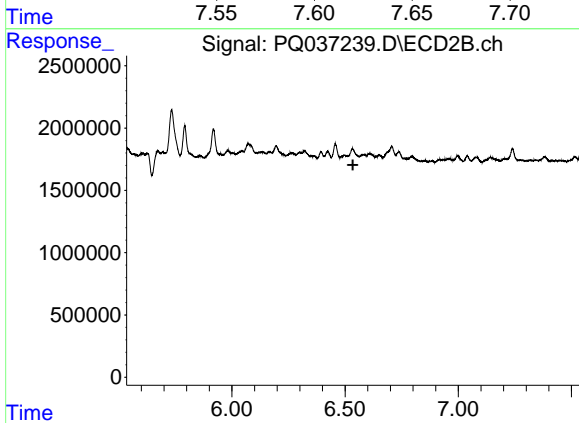
R.T.: 0.000 min
 Exp R.T. : 6.384 min
 Response: 0
 Conc: N.D.



#33 AR-1260-3

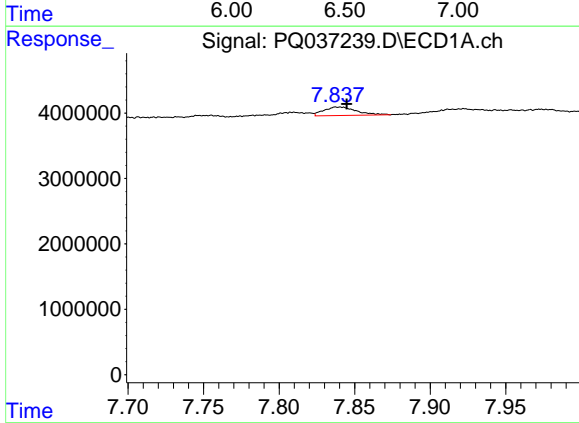
R.T.: 7.617 min
 Delta R.T.: 0.000 min
 Response: 932933
 Conc: 4.35 ng/ml

Instrument :
 ECD_Q
 ClientSampleId :
 JC-02-021119-L



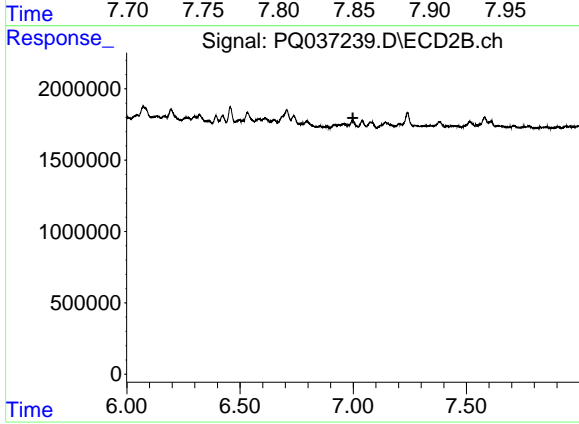
#33 AR-1260-3

R.T.: 0.000 min
 Exp R.T. : 6.534 min
 Response: 0
 Conc: N.D.



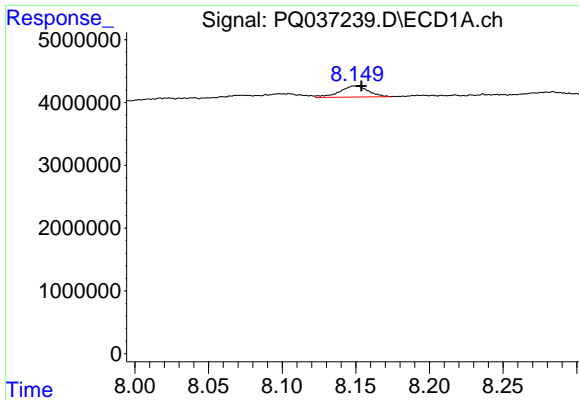
#34 AR-1260-4

R.T.: 7.839 min
 Delta R.T.: -0.006 min
 Response: 1973082
 Conc: 8.23 ng/ml



#34 AR-1260-4

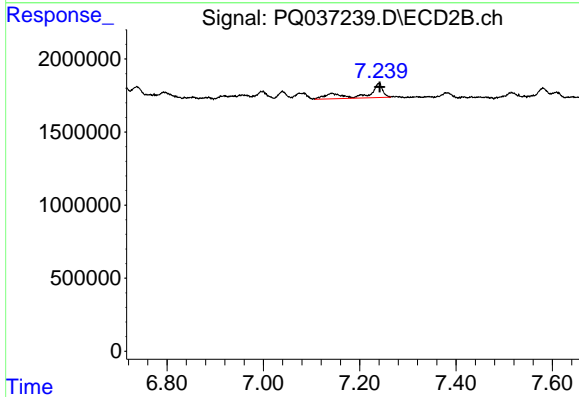
R.T.: 0.000 min
 Exp R.T. : 6.999 min
 Response: 0
 Conc: N.D.



#35 AR-1260-5

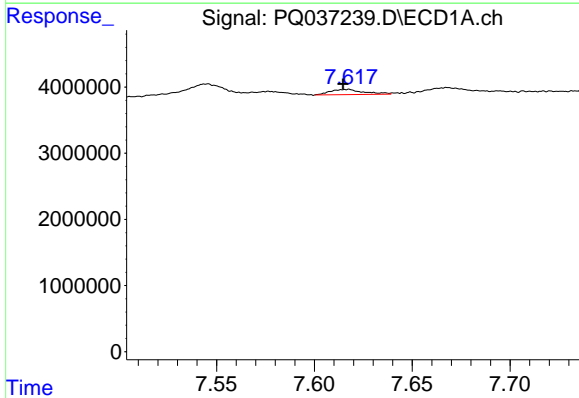
R.T.: 8.149 min
 Delta R.T.: -0.004 min
 Response: 2406223
 Conc: 4.85 ng/ml

Instrument :
 ECD_Q
 ClientSampleId :
 JC-02-021119-L



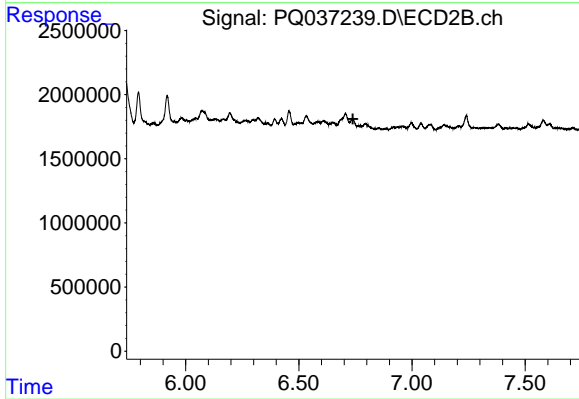
#35 AR-1260-5

R.T.: 7.240 min
 Delta R.T.: -0.002 min
 Response: 2458696
 Conc: 9.57 ng/ml



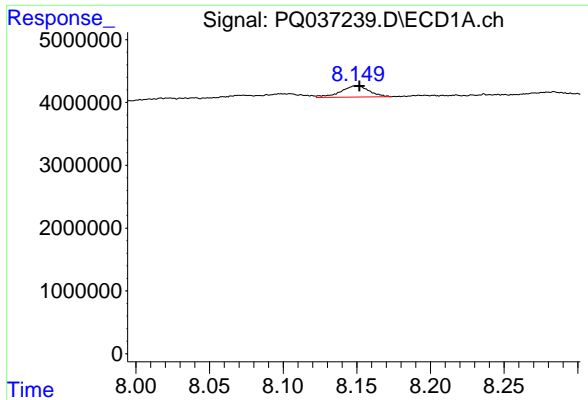
#36 AR-1262-1

R.T.: 7.617 min
 Delta R.T.: 0.002 min
 Response: 932933
 Conc: 2.16 ng/ml



#36 AR-1262-1

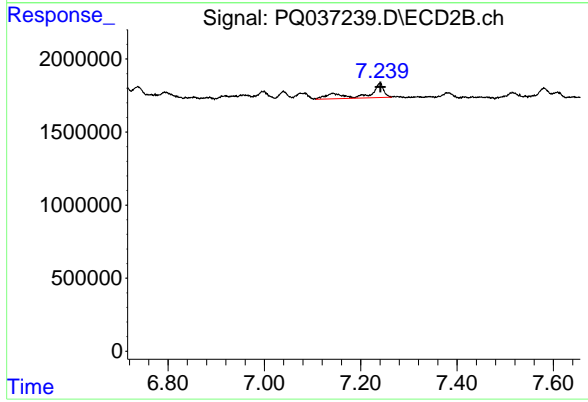
R.T.: 0.000 min
 Exp R.T. : 6.739 min
 Response: 0
 Conc: N.D.



#37 AR-1262-2

R.T.: 8.149 min
 Delta R.T.: -0.002 min
 Response: 2406223
 Conc: 3.25 ng/ml

Instrument :
 ECD_Q
 ClientSampleId :
 JC-02-021119-L



#37 AR-1262-2

R.T.: 7.240 min
 Delta R.T.: 0.000 min
 Response: 2458696
 Conc: 6.77 ng/ml