

Data Path : Z:\pestpcbsrv\HPCHEM1\ECD_Q\Data\PQ030220\
 Data File : PQ046680.D
 Signal(s) : Signal #1: ECD1A.ch Signal #2: ECD2B.ch
 Acq On : 02 Mar 2020 20:24
 Operator : AJ\MA
 Sample : L1743-10
 Misc :
 ALS Vial : 24 Sample Multiplier: 1

Instrument :
 ECD_Q
 ClientSampled :
 C-4

Integration File signal 1: autoint1.e
 Integration File signal 2: autoint2.e
 Quant Time: Mar 03 03:06:59 2020
 Quant Method : Z:\pestpcbsrv\HPCHEM1\ECD_Q\Method\PQ022120.M
 Quant Title : GC EXTRACTABLES
 QLast Update : Fri Feb 21 13:47:31 2020
 Response via : Initial Calibration
 Integrator: ChemStation

Volume Inj. : 2 µl
 Signal #1 Phase : ZB-MR1 Signal #2 Phase: ZB-MR2
 Signal #1 Info : 30Mx0.32mmx 0.50µ Signal #2 Info : 30M x 0.32mm x 0.25µm

Compound	RT#1	RT#2	Resp#1	Resp#2	ng/ml	ng/ml

System Monitoring Compounds						
1) SA Tetrachlo...	5.181	4.329	315.4E6	158.4E6	20.756	20.834
2) SA Decachlor...	11.313	9.750	161.8E6	116.6E6	19.871	16.831

Target Compounds

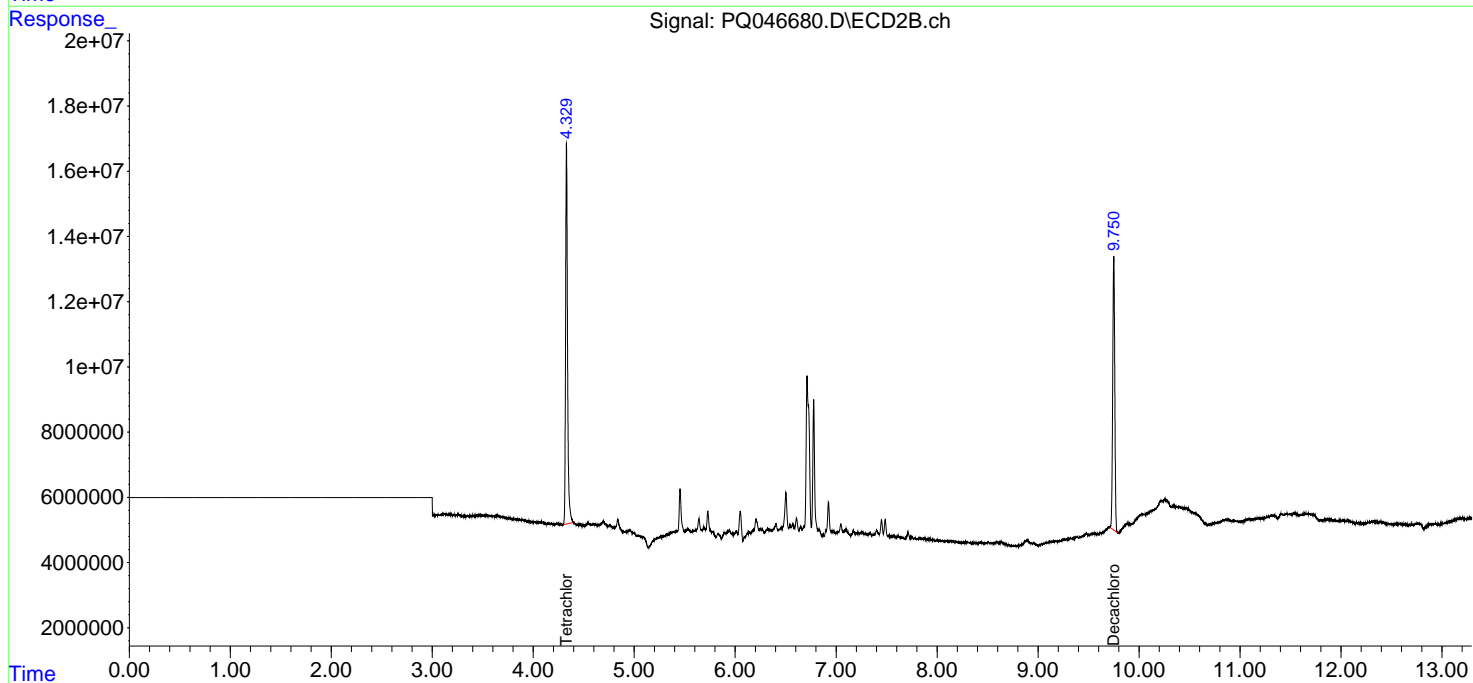
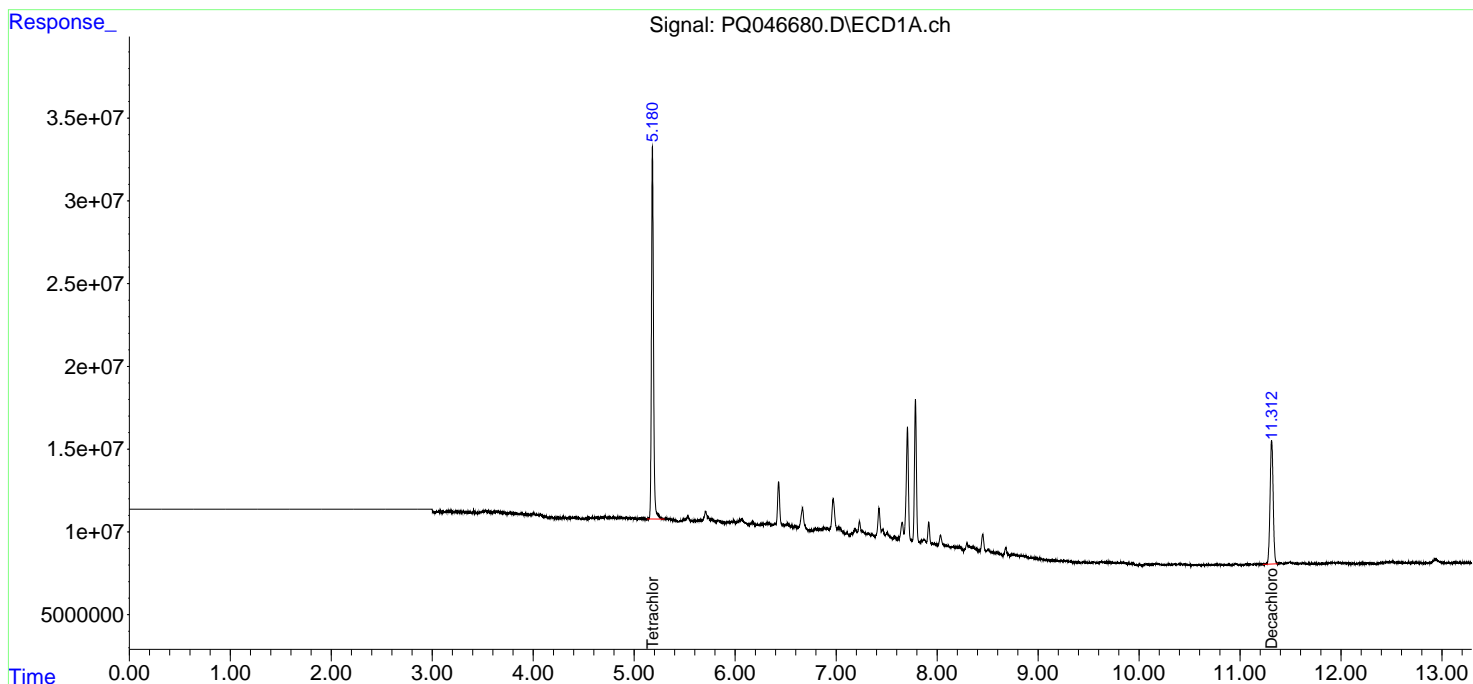
(f)=RT Delta > 1/2 Window (#)=Amounts differ by > 25% (m)=manual int.

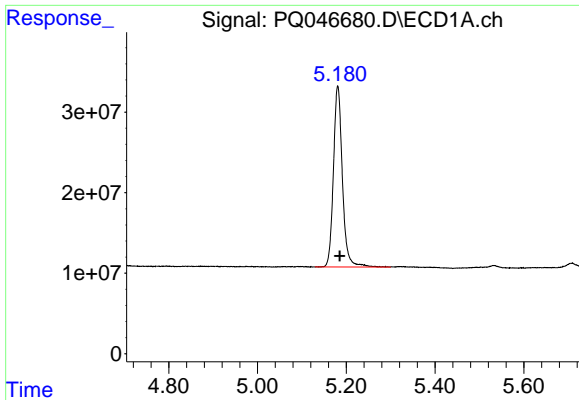
Data Path : Z:\pestpcbsrv\HPCHEM1\ECD_Q\Data\PQ030220\
 Data File : PQ046680.D
 Signal(s) : Signal #1: ECD1A.ch Signal #2: ECD2B.ch
 Acq On : 02 Mar 2020 20:24
 Operator : AJ\MA
 Sample : L1743-10
 Misc :
 ALS Vial : 24 Sample Multiplier: 1

Instrument :
 ECD_Q
 ClientSampleId :
 C-4

Integration File signal 1: autoint1.e
 Integration File signal 2: autoint2.e
 Quant Time: Mar 03 03:06:59 2020
 Quant Method : Z:\pestpcbsrv\HPCHEM1\ECD_Q\Method\PQ022120.M
 Quant Title : GC EXTRACTABLES
 QLast Update : Fri Feb 21 13:47:31 2020
 Response via : Initial Calibration
 Integrator: ChemStation

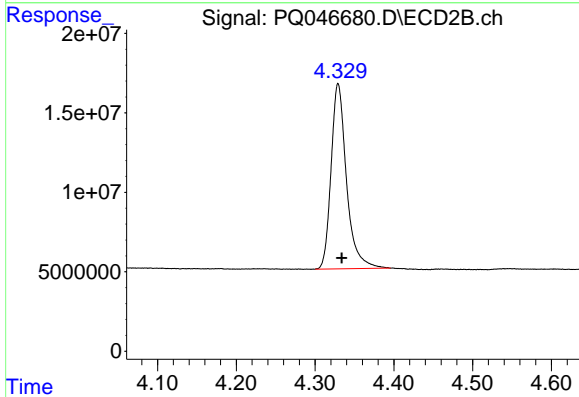
Volume Inj. : 2 µl
 Signal #1 Phase : ZB-MR1 Signal #2 Phase: ZB-MR2
 Signal #1 Info : 30Mx0.32mmx 0.50µ Signal #2 Info : 30M x 0.32mm x 0.25µm



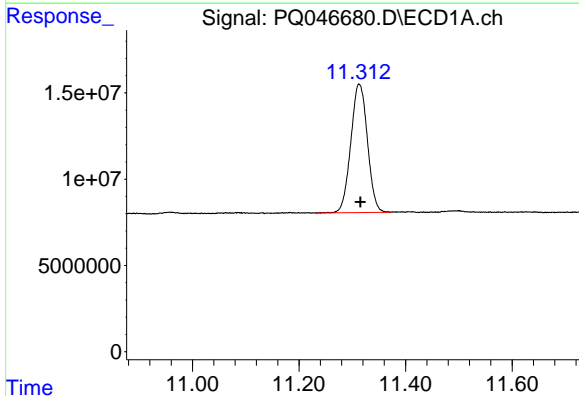


#1 Tetrachloro-m-xylene
 R.T.: 5.181 min
 Delta R.T.: -0.004 min
 Response: 315369384
 Conc: 20.76 ng/ml

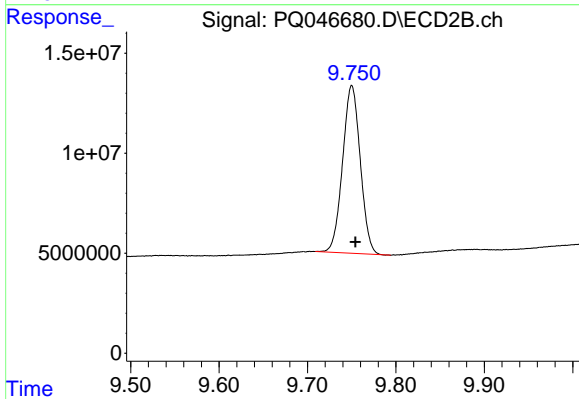
Instrument :
 ECD_Q
 ClientSampleId :
 C-4



#1 Tetrachloro-m-xylene
 R.T.: 4.329 min
 Delta R.T.: -0.004 min
 Response: 158410725
 Conc: 20.83 ng/ml



#2 Decachlorobiphenyl
 R.T.: 11.313 min
 Delta R.T.: -0.003 min
 Response: 161763825
 Conc: 19.87 ng/ml



#2 Decachlorobiphenyl
 R.T.: 9.750 min
 Delta R.T.: -0.004 min
 Response: 116585222
 Conc: 16.83 ng/ml