

Data Path : Z:\pestpcbsrv\HPCHEM1\ECD_Q\Data\PQ030220\
 Data File : PQ046689.D
 Signal(s) : Signal #1: ECD1A.ch Signal #2: ECD2B.ch
 Acq On : 02 Mar 2020 23:08
 Operator : AJ\MA
 Sample : AR1660CCC500
 Misc :
 ALS Vial : 3 Sample Multiplier: 1

Instrument :
 ECD_Q
 ClientSampleId :
 AR1660CCC500

Manual Integrations
 APPROVED

Sohil
 3/3/2020 4:45:41 PM

Integration File signal 1: autoint1.e
 Integration File signal 2: autoint2.e
 Quant Time: Mar 03 03:12:10 2020
 Quant Method : Z:\pestpcbsrv\HPCHEM1\ECD_Q\Method\PQ022120.M
 Quant Title : GC EXTRACTABLES
 QLast Update : Fri Feb 21 13:47:31 2020
 Response via : Initial Calibration
 Integrator: ChemStation

Volume Inj. : 2 µl
 Signal #1 Phase : ZB-MR1 Signal #2 Phase: ZB-MR2
 Signal #1 Info : 30Mx0.32mmx 0.50µ Signal #2 Info : 30M x 0.32mm x 0.25µm

Compound	RT#1	RT#2	Resp#1	Resp#2	ng/ml	ng/ml

System Monitoring Compounds						
1) SA Tetrachlo...	5.181	4.330	1009.3E6	626.4E6	66.430m	82.381
2) SA Decachlor...	11.310	9.745	398.5E6	297.7E6	48.954	42.981
Target Compounds						
3) L1 AR-1016-1	6.499	5.611	313.1E6	186.7E6	569.886	683.178
4) L1 AR-1016-2	6.522	5.632	466.0E6	262.9E6	578.797	683.142
5) L1 AR-1016-3	6.589	5.829	281.2E6	122.1E6	586.924	658.414
6) L1 AR-1016-4	6.695	5.876	255.3E6	93167398	642.732	619.175
7) L1 AR-1016-5	7.011	6.111	209.9E6	125.6E6	559.589	613.373
31) L7 AR-1260-1	8.189	7.213	314.0E6	216.7E6	532.935	568.735
32) L7 AR-1260-2	8.452	7.407	378.8E6	231.6E6	550.261	502.315
33) L7 AR-1260-3	8.820	7.568	267.5E6	222.8E6	527.461	517.028
34) L7 AR-1260-4	9.058	8.052	260.4E6	170.9E6	482.568	469.733
35) L7 AR-1260-5	9.396	8.298	522.8E6	418.9E6	502.286	461.734

(f)=RT Delta > 1/2 Window (#)=Amounts differ by > 25% (m)=manual int.

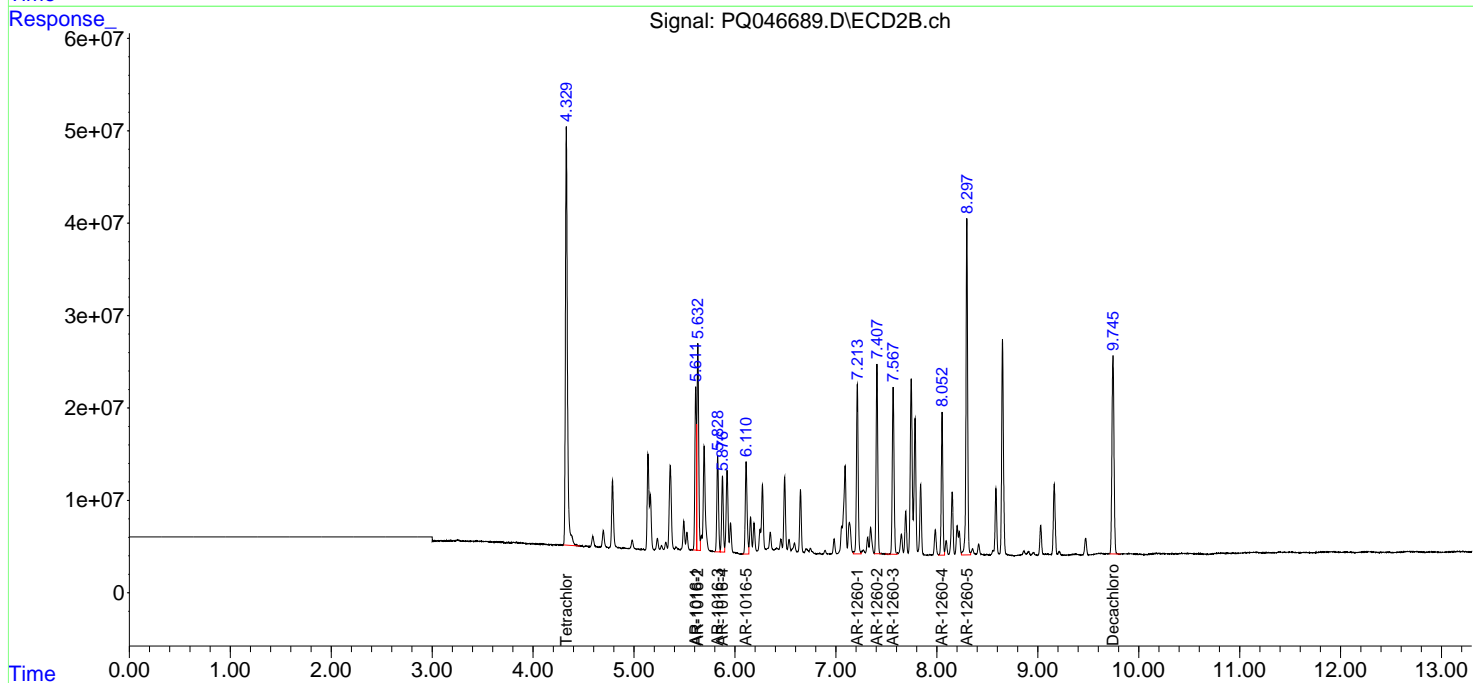
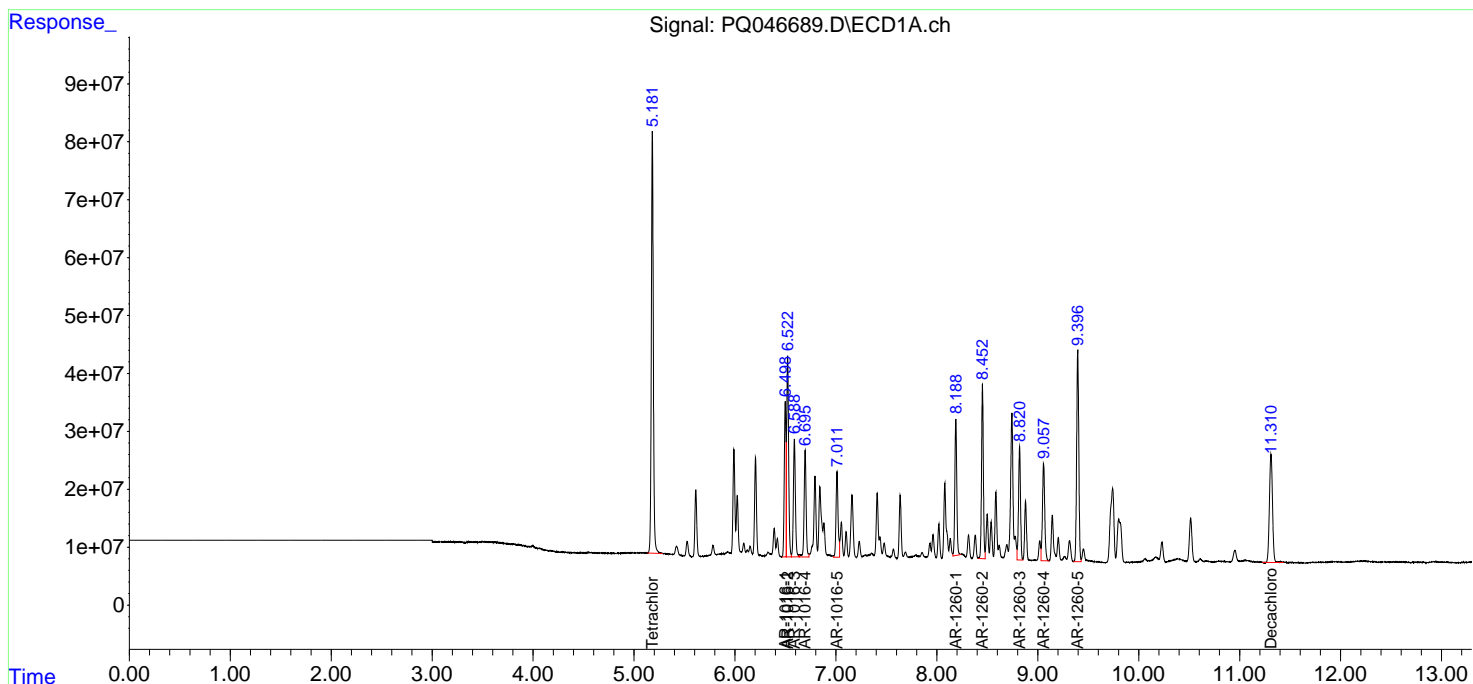
Data Path : Z:\pestpcbsrv\HPCHEM1\ECD_Q\Data\PQ030220\
 Data File : PQ046689.D
 Signal(s) : Signal #1: ECD1A.ch Signal #2: ECD2B.ch
 Acq On : 02 Mar 2020 23:08
 Operator : AJ\MA
 Sample : AR1660CCC500
 Misc :
 ALS Vial : 3 Sample Multiplier: 1

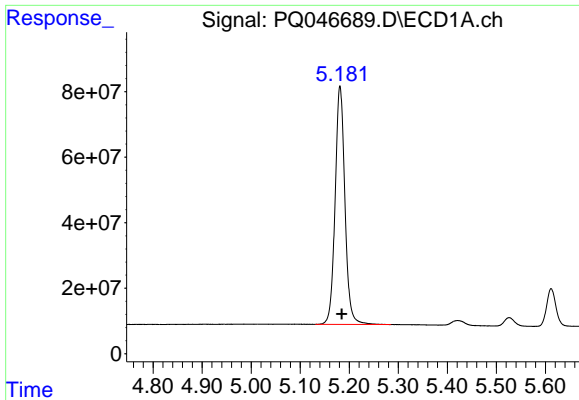
Instrument :
 ECD_Q
Client Sampled :
 AR1660CCC500

Manual Integrations
APPROVED
 Sohil
 3/3/2020 4:45:41 PM

Integration File signal 1: autoint1.e
 Integration File signal 2: autoint2.e
 Quant Time: Mar 03 03:12:10 2020
 Quant Method : Z:\pestpcbsrv\HPCHEM1\ECD_Q\Method\PQ022120.M
 Quant Title : GC EXTRACTABLES
 QLast Update : Fri Feb 21 13:47:31 2020
 Response via : Initial Calibration
 Integrator: ChemStation

Volume Inj. : 2 µl
 Signal #1 Phase : ZB-MR1 Signal #2 Phase: ZB-MR2
 Signal #1 Info : 30Mx0.32mmx 0.50µ Signal #2 Info : 30M x 0.32mm x 0.25µm

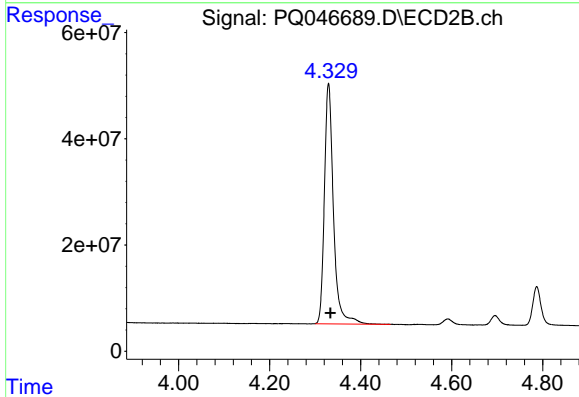




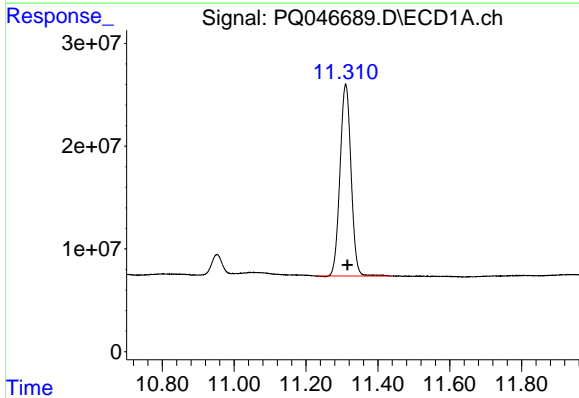
#1 Tetrachloro-m-xylene
 R.T.: 5.181 min
 Delta R.T.: -0.004 min
 Response: 1009345117
 Conc: 66.43 ng/ml m

Instrument :
 ECD_Q
ClientSampled :
 AR1660CCC500

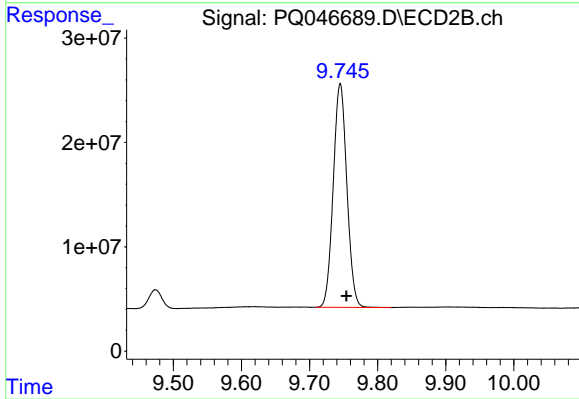
Manual Integrations
APPROVED
 Sohil
 3/3/2020 4:45:41 PM



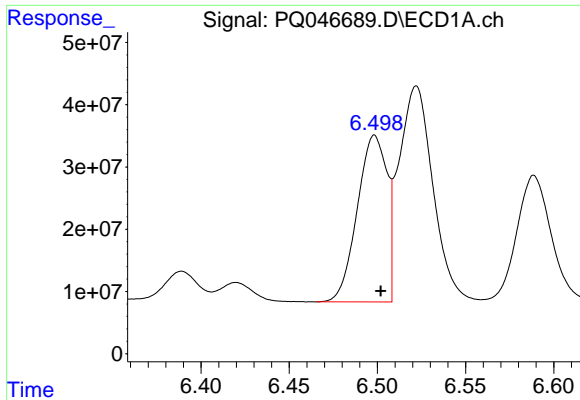
#1 Tetrachloro-m-xylene
 R.T.: 4.330 min
 Delta R.T.: -0.004 min
 Response: 626382201
 Conc: 82.38 ng/ml



#2 Decachlorobiphenyl
 R.T.: 11.310 min
 Delta R.T.: -0.005 min
 Response: 398507566
 Conc: 48.95 ng/ml



#2 Decachlorobiphenyl
 R.T.: 9.745 min
 Delta R.T.: -0.009 min
 Response: 297722919
 Conc: 42.98 ng/ml

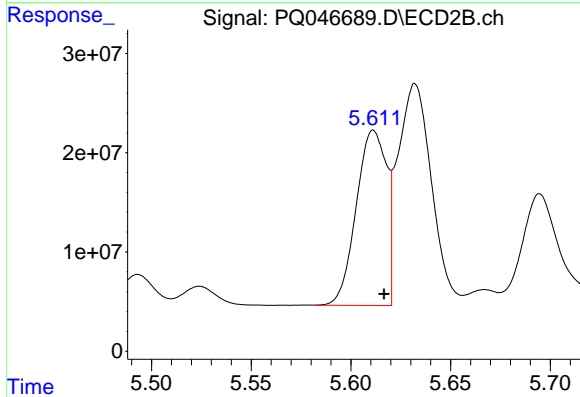


#3 AR-1016-1

R.T.: 6.499 min
 Delta R.T.: -0.003 min
 Response: 313106623
 Conc: 569.89 ng/ml

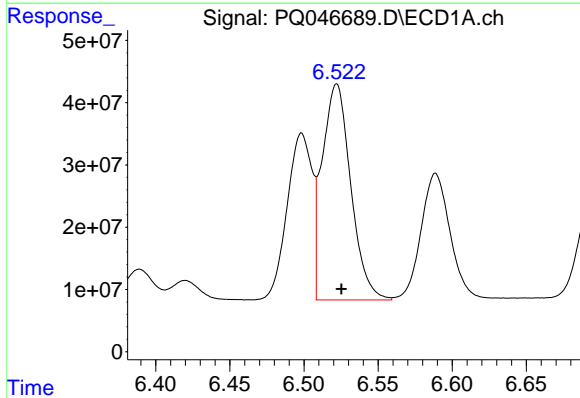
Instrument :
 ECD_Q
ClientSampled :
 AR1660CCC500

Manual Integrations
APPROVED
 Sohil
 3/3/2020 4:45:41 PM



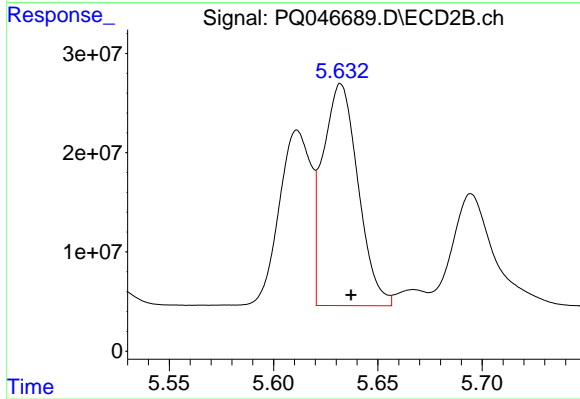
#3 AR-1016-1

R.T.: 5.611 min
 Delta R.T.: -0.005 min
 Response: 186652520
 Conc: 683.18 ng/ml



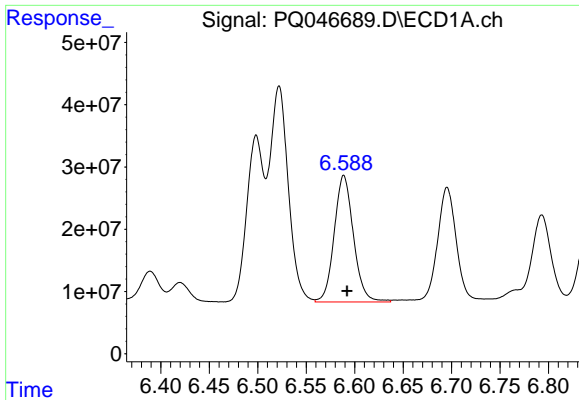
#4 AR-1016-2

R.T.: 6.522 min
 Delta R.T.: -0.003 min
 Response: 466009746
 Conc: 578.80 ng/ml



#4 AR-1016-2

R.T.: 5.632 min
 Delta R.T.: -0.005 min
 Response: 262909041
 Conc: 683.14 ng/ml



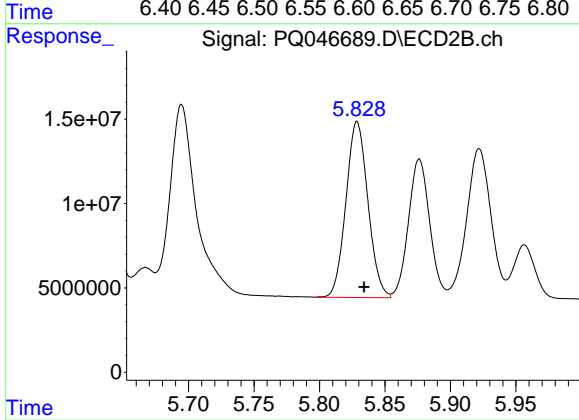
#5 AR-1016-3

R.T.: 6.589 min
Delta R.T.: -0.003 min
Response: 281157246
Conc: 586.92 ng/ml

Instrument :
ECD_Q
ClientSampled :
AR1660CCC500

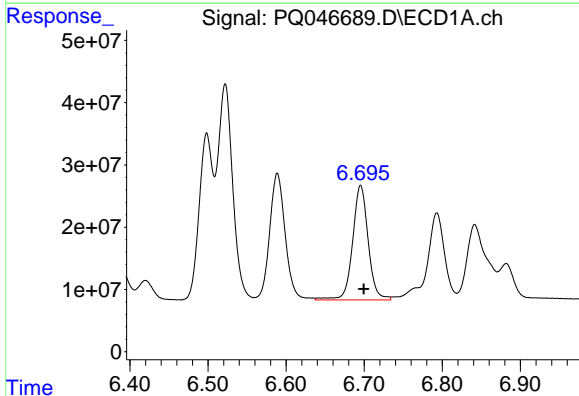
Manual Integrations
APPROVED

Sohil
3/3/2020 4:45:41 PM



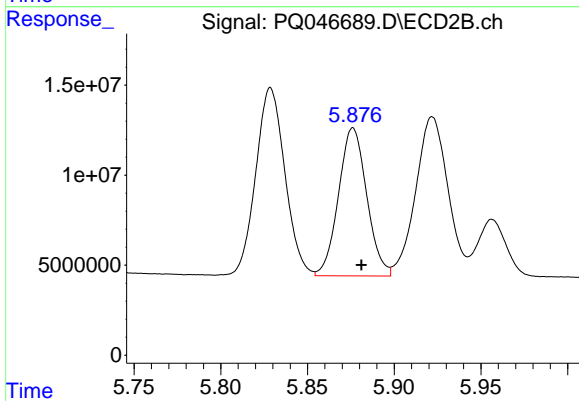
#5 AR-1016-3

R.T.: 5.829 min
Delta R.T.: -0.005 min
Response: 122052406
Conc: 658.41 ng/ml



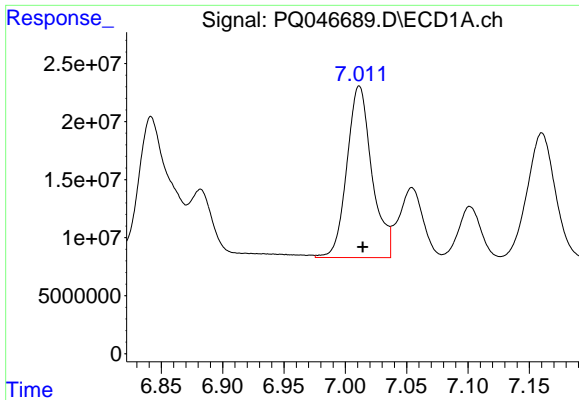
#6 AR-1016-4

R.T.: 6.695 min
Delta R.T.: -0.004 min
Response: 255342231
Conc: 642.73 ng/ml



#6 AR-1016-4

R.T.: 5.876 min
Delta R.T.: -0.005 min
Response: 93167398
Conc: 619.18 ng/ml

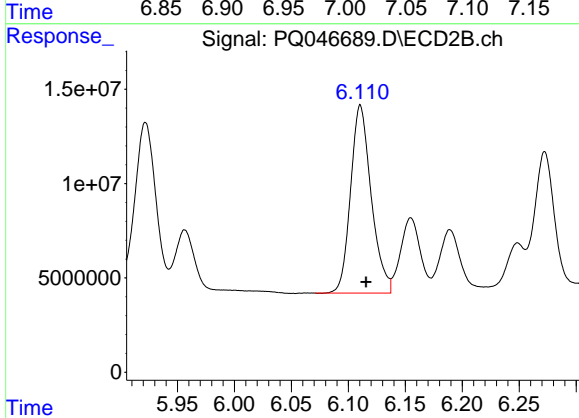


#7 AR-1016-5

R.T.: 7.011 min
 Delta R.T.: -0.003 min
 Response: 209905404
 Conc: 559.59 ng/ml

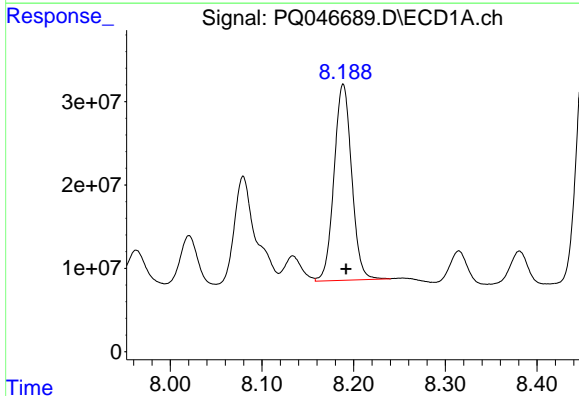
Instrument :
 ECD_Q
 ClientSampled :
 AR1660CCC500

Manual Integrations
 APPROVED
 Sohil
 3/3/2020 4:45:41 PM



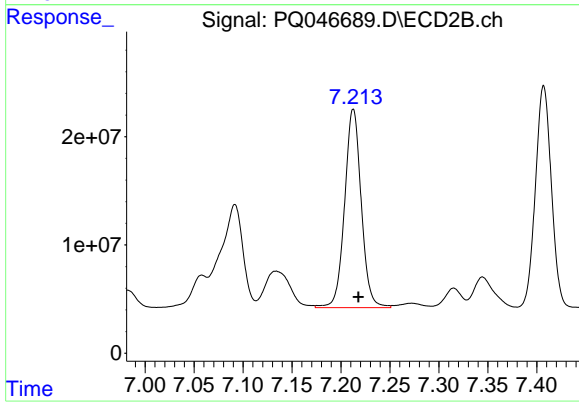
#7 AR-1016-5

R.T.: 6.111 min
 Delta R.T.: -0.005 min
 Response: 125622399
 Conc: 613.37 ng/ml



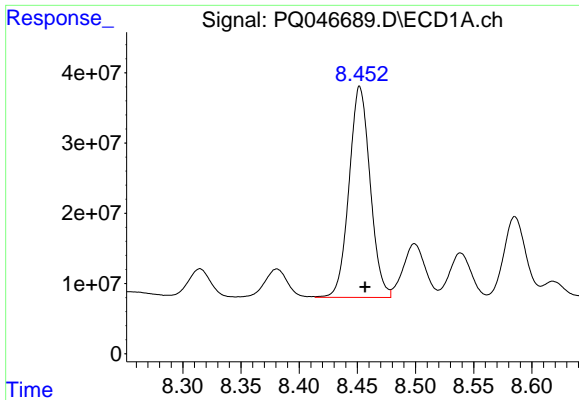
#31 AR-1260-1

R.T.: 8.189 min
 Delta R.T.: -0.003 min
 Response: 314010386
 Conc: 532.94 ng/ml



#31 AR-1260-1

R.T.: 7.213 min
 Delta R.T.: -0.005 min
 Response: 216698054
 Conc: 568.74 ng/ml



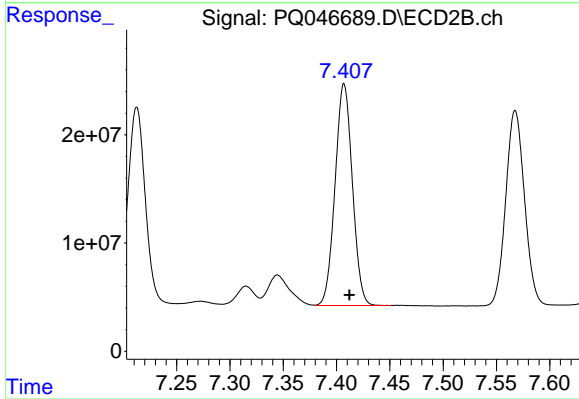
#32 AR-1260-2

R.T.: 8.452 min
 Delta R.T.: -0.004 min
 Response: 378827870
 Conc: 550.26 ng/ml

Instrument :
 ECD_Q
 ClientSampled :
 AR1660CCC500

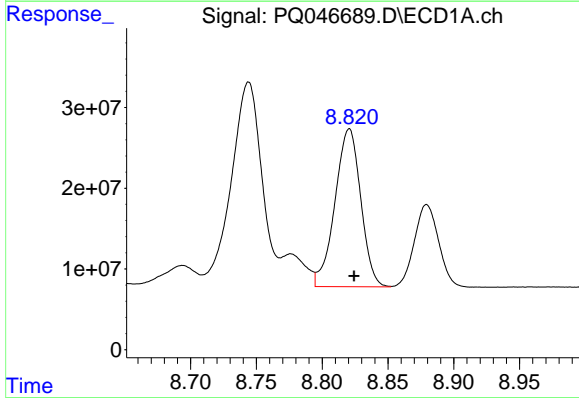
Manual Integrations
 APPROVED

Sohil
 3/3/2020 4:45:41 PM



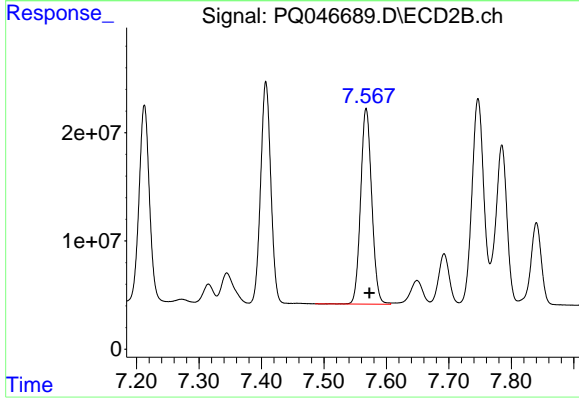
#32 AR-1260-2

R.T.: 7.407 min
 Delta R.T.: -0.005 min
 Response: 23154596
 Conc: 502.31 ng/ml



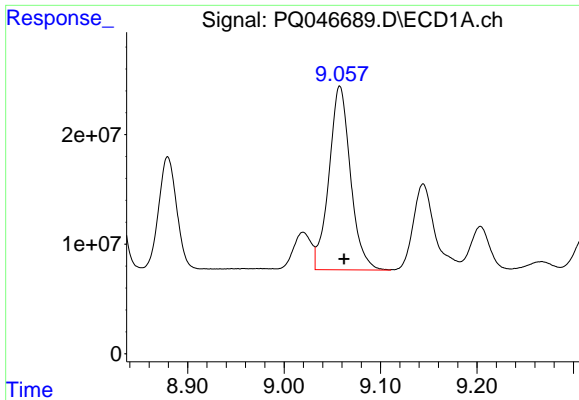
#33 AR-1260-3

R.T.: 8.820 min
 Delta R.T.: -0.004 min
 Response: 267519041
 Conc: 527.46 ng/ml



#33 AR-1260-3

R.T.: 7.568 min
 Delta R.T.: -0.005 min
 Response: 222812228
 Conc: 517.03 ng/ml

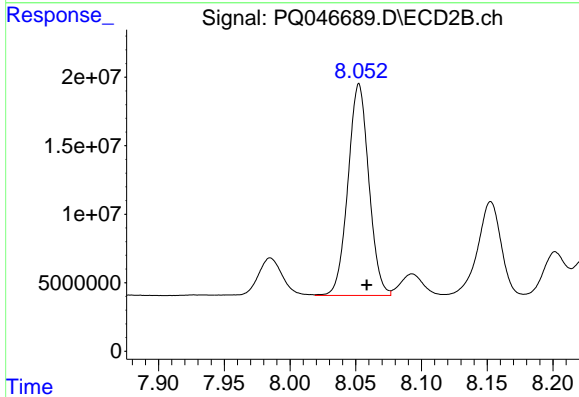


#34 AR-1260-4

R.T.: 9.058 min
 Delta R.T.: -0.004 min
 Response: 260434347
 Conc: 482.57 ng/ml

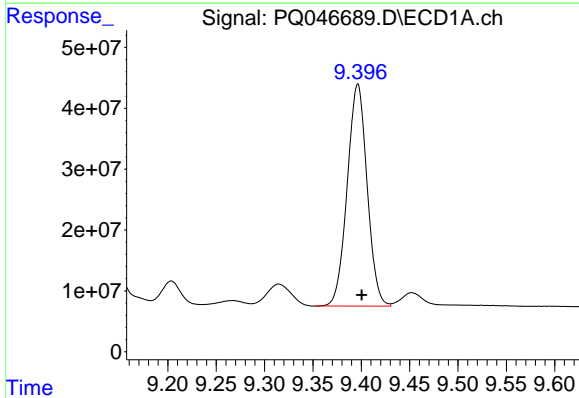
Instrument :
 ECD_Q
 ClientSampled :
 AR1660CCC500

Manual Integrations
 APPROVED
 Sohil
 3/3/2020 4:45:41 PM



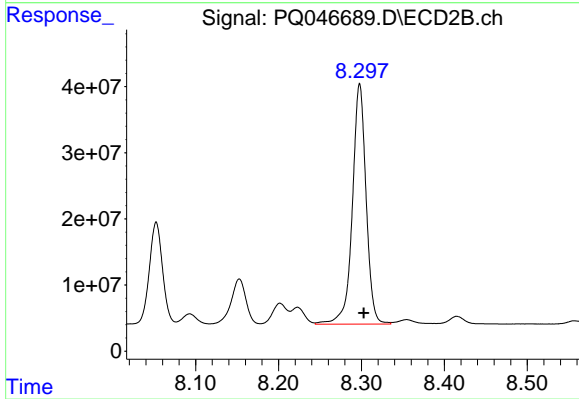
#34 AR-1260-4

R.T.: 8.052 min
 Delta R.T.: -0.006 min
 Response: 170875185
 Conc: 469.73 ng/ml



#35 AR-1260-5

R.T.: 9.396 min
 Delta R.T.: -0.004 min
 Response: 522782606
 Conc: 502.29 ng/ml



#35 AR-1260-5

R.T.: 8.298 min
 Delta R.T.: -0.005 min
 Response: 418886346
 Conc: 461.73 ng/ml