

Data Path : Z:\pestpcbsrv\HPCHEM1\ECD\_Q\Data\PQ030320\  
 Data File : PQ046706.D  
 Signal(s) : Signal #1: ECD1A.ch Signal #2: ECD2B.ch  
 Acq On : 03 Mar 2020 15:56  
 Operator : AJ\MA  
 Sample : I.BLK  
 Misc :  
 ALS Vial : 2 Sample Multiplier: 1

**Instrument :**  
 ECD\_Q  
**ClientSampled :**  
 I.BLK

**Manual Integrations**  
**APPROVED**  
 Sohil  
 3/6/2020 1:05:53 PM

Integration File signal 1: autoint1.e  
 Integration File signal 2: autoint2.e  
 Quant Time: Mar 03 18:12:38 2020  
 Quant Method : Z:\pestpcbsrv\HPCHEM1\ECD\_Q\Method\PQ022120.M  
 Quant Title : GC EXTRACTABLES  
 QLast Update : Fri Feb 21 13:47:31 2020  
 Response via : Initial Calibration  
 Integrator: ChemStation

Volume Inj. : 2 µl  
 Signal #1 Phase : ZB-MR1 Signal #2 Phase: ZB-MR2  
 Signal #1 Info : 30Mx0.32mmx 0.50µ Signal #2 Info : 30M x 0.32mm x 0.25µm

Compound	RT#1	RT#2	Resp#1	Resp#2	ng/ml	ng/ml
-----						
System Monitoring Compounds						
1) SA Tetrachlo...	5.180	4.326	423.9E6	208.2E6	27.901	27.379
2) SA Decachlor...	11.313	9.744	174.2E6	152.8E6	21.398m	22.060

Target Compounds  
 -----

(f)=RT Delta > 1/2 Window (#)=Amounts differ by > 25% (m)=manual int.

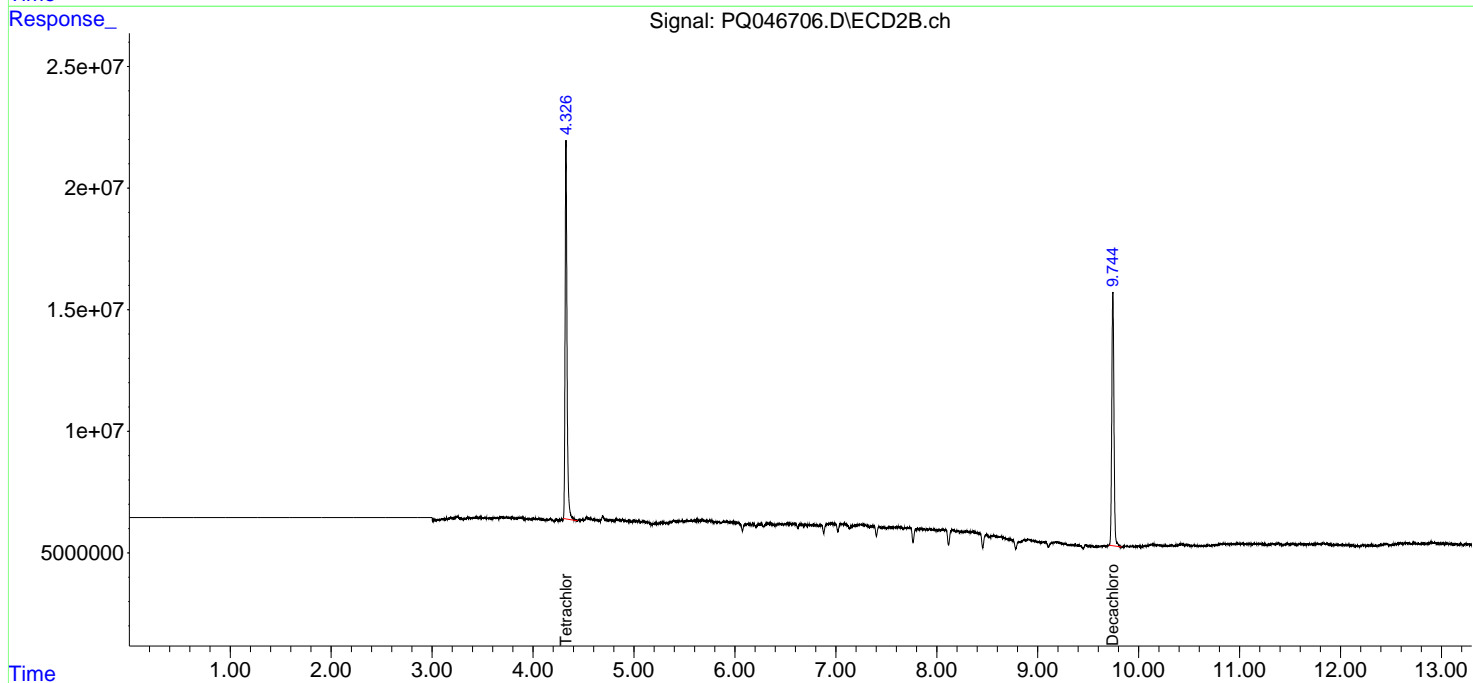
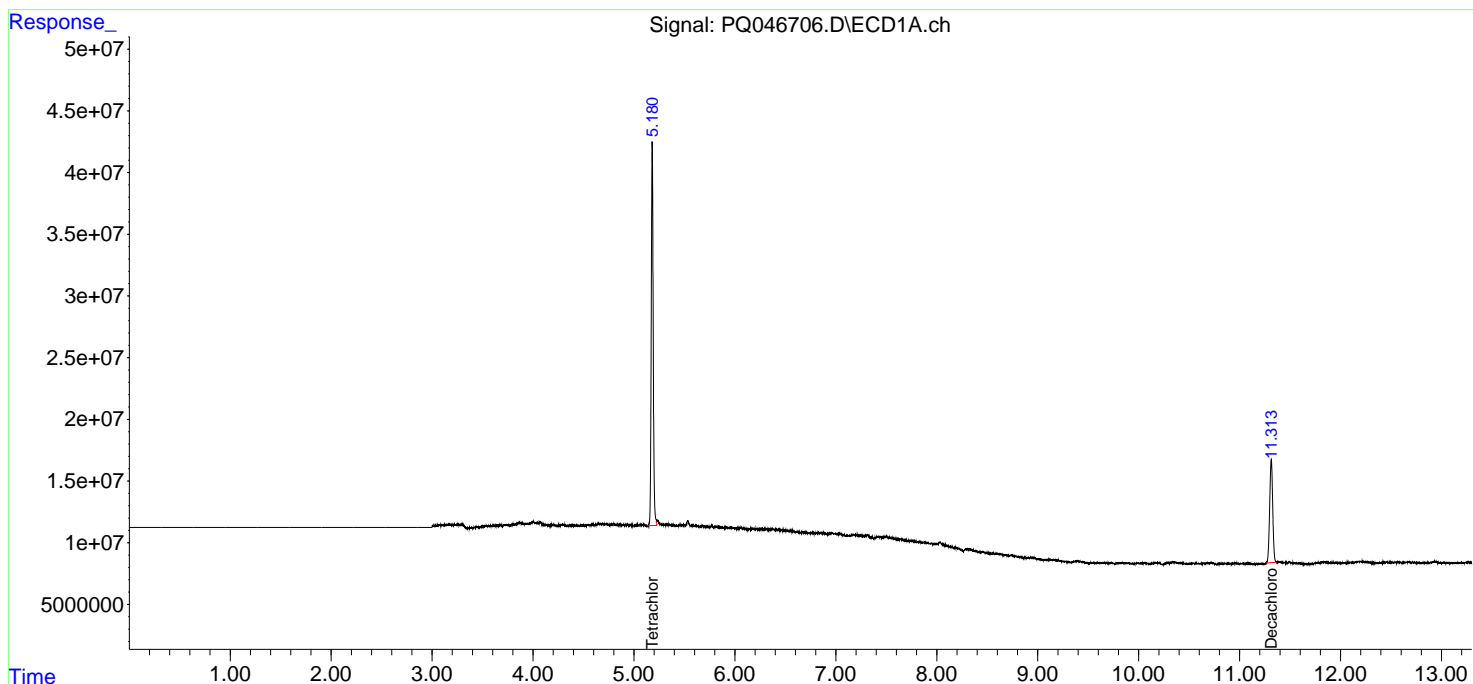
Data Path : Z:\pestpcbsrv\HPCHEM1\ECD\_Q\Data\PQ030320\  
 Data File : PQ046706.D  
 Signal(s) : Signal #1: ECD1A.ch Signal #2: ECD2B.ch  
 Acq On : 03 Mar 2020 15:56  
 Operator : AJ\MA  
 Sample : I.BLK  
 Misc :  
 ALS Vial : 2 Sample Multiplier: 1

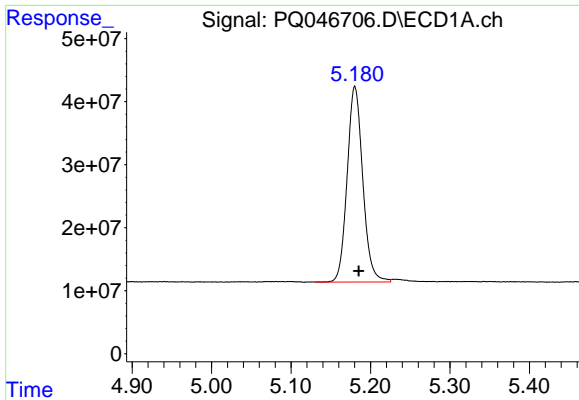
**Instrument :**  
 ECD\_Q  
**Client Sampled :**  
 I.BLK

**Manual Integrations**  
**APPROVED**  
 Sohil  
 3/6/2020 1:05:53 PM

Integration File signal 1: autoint1.e  
 Integration File signal 2: autoint2.e  
 Quant Time: Mar 03 18:12:38 2020  
 Quant Method : Z:\pestpcbsrv\HPCHEM1\ECD\_Q\Method\PQ022120.M  
 Quant Title : GC EXTRACTABLES  
 QLast Update : Fri Feb 21 13:47:31 2020  
 Response via : Initial Calibration  
 Integrator: ChemStation

Volume Inj. : 2 µl  
 Signal #1 Phase : ZB-MR1 Signal #2 Phase: ZB-MR2  
 Signal #1 Info : 30Mx0.32mmx 0.50µm Signal #2 Info : 30M x 0.32mm x 0.25µm

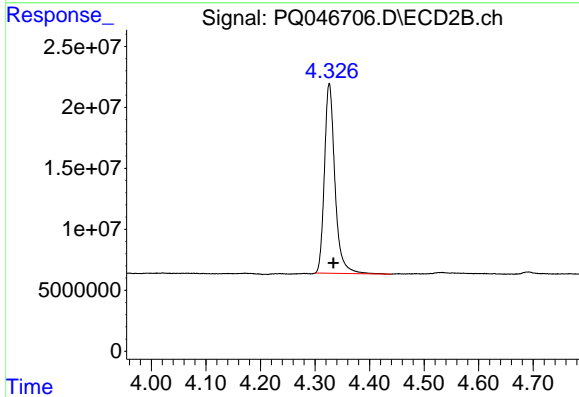




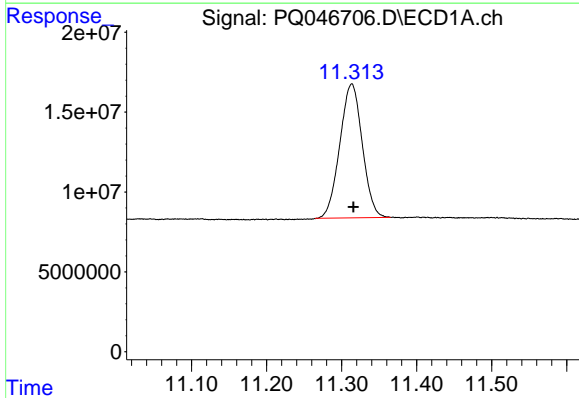
#1 Tetrachloro-m-xylene  
 R.T.: 5.180 min  
 Delta R.T.: -0.005 min  
 Response: 423934785  
 Conc: 27.90 ng/ml

Instrument :  
 ECD\_Q  
 ClientSampled :  
 I.BLK

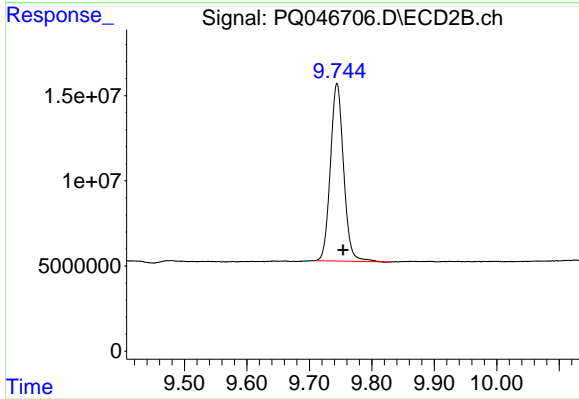
Manual Integrations  
 APPROVED  
 Sohil  
 3/6/2020 1:05:53 PM



#1 Tetrachloro-m-xylene  
 R.T.: 4.326 min  
 Delta R.T.: -0.007 min  
 Response: 208172342  
 Conc: 27.38 ng/ml



#2 Decachlorobiphenyl  
 R.T.: 11.313 min  
 Delta R.T.: -0.002 min  
 Response: 174188575  
 Conc: 21.40 ng/ml m



#2 Decachlorobiphenyl  
 R.T.: 9.744 min  
 Delta R.T.: -0.010 min  
 Response: 152809084  
 Conc: 22.06 ng/ml