

Data Path : Z:\pestpcbsrv\HPCHEM1\ECD_Q\Data\PQ030320\
 Data File : PQ046716.D
 Signal(s) : Signal #1: ECD1A.ch Signal #2: ECD2B.ch
 Acq On : 03 Mar 2020 19:19
 Operator : AJ\MA
 Sample : L1768-02
 Misc :
 ALS Vial : 26 Sample Multiplier: 1

Instrument :
 ECD_Q
 ClientSampleId :
 S2-01-A

Integration File signal 1: autoint1.e
 Integration File signal 2: autoint2.e
 Quant Time: Mar 04 07:05:38 2020
 Quant Method : Z:\pestpcbsrv\HPCHEM1\ECD_Q\Method\PQ022120.M
 Quant Title : GC EXTRACTABLES
 QLast Update : Fri Feb 21 13:47:31 2020
 Response via : Initial Calibration
 Integrator: ChemStation

Volume Inj. : 2 µl
 Signal #1 Phase : ZB-MR1 Signal #2 Phase: ZB-MR2
 Signal #1 Info : 30Mx0.32mmx 0.50µ Signal #2 Info : 30M x 0.32mm x 0.25µm

Compound	RT#1	RT#2	Resp#1	Resp#2	ng/ml	ng/ml

System Monitoring Compounds						
1) SA Tetrachlo...	5.180	4.327	354.3E6	164.0E6	23.317	21.574
2) SA Decachlor...	11.310	9.742	94068465	75737693	11.556	10.934
Target Compounds						
26) L6 AR-1254-1	7.423	6.497	107.4E6	55443832	229.423	156.777m#
27) L6 AR-1254-2	7.651	6.646	83346453	10353627	117.180	33.862m#
28) L6 AR-1254-3	8.030	7.072	46296228	5623971	63.843	10.971m#
29) L6 AR-1254-4	8.315	7.311	18617245	4381471	35.074	13.910m#
30) L6 AR-1254-5	8.745	7.744	16145854	8310108	31.517	18.924 #

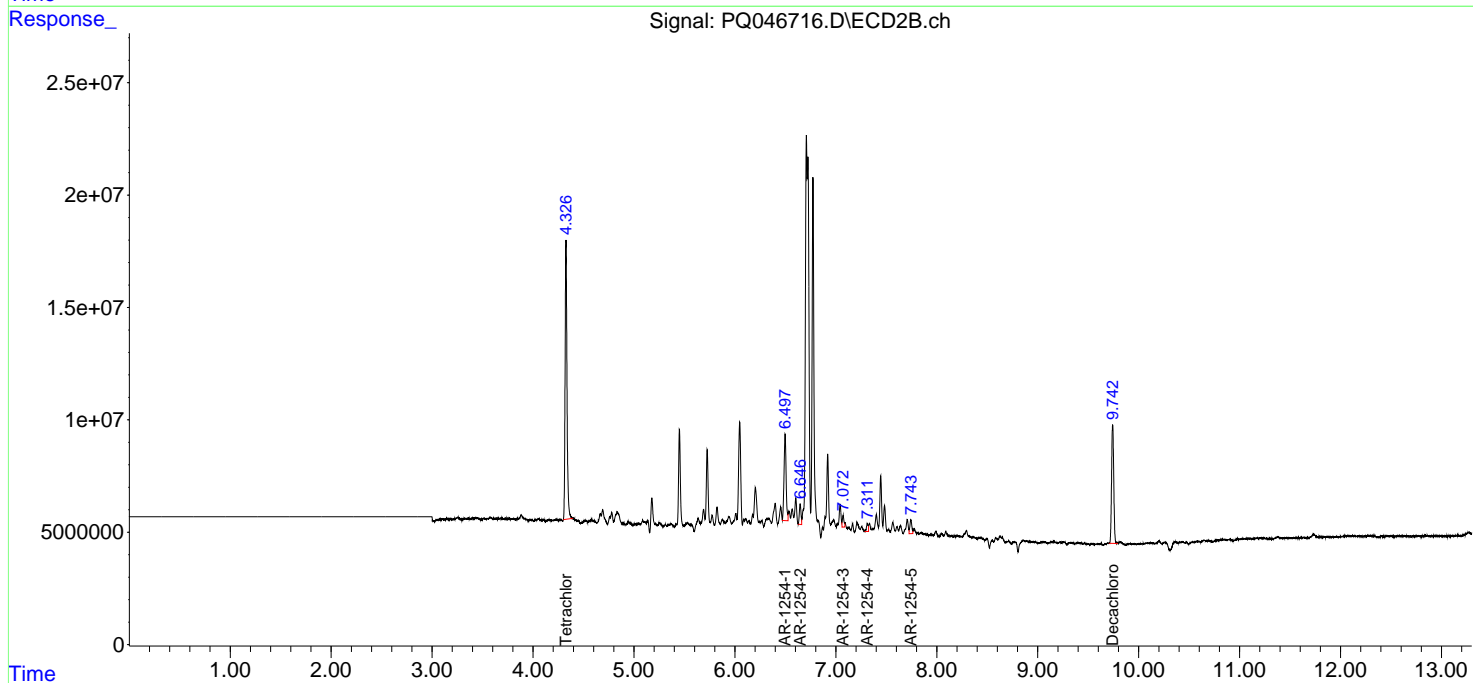
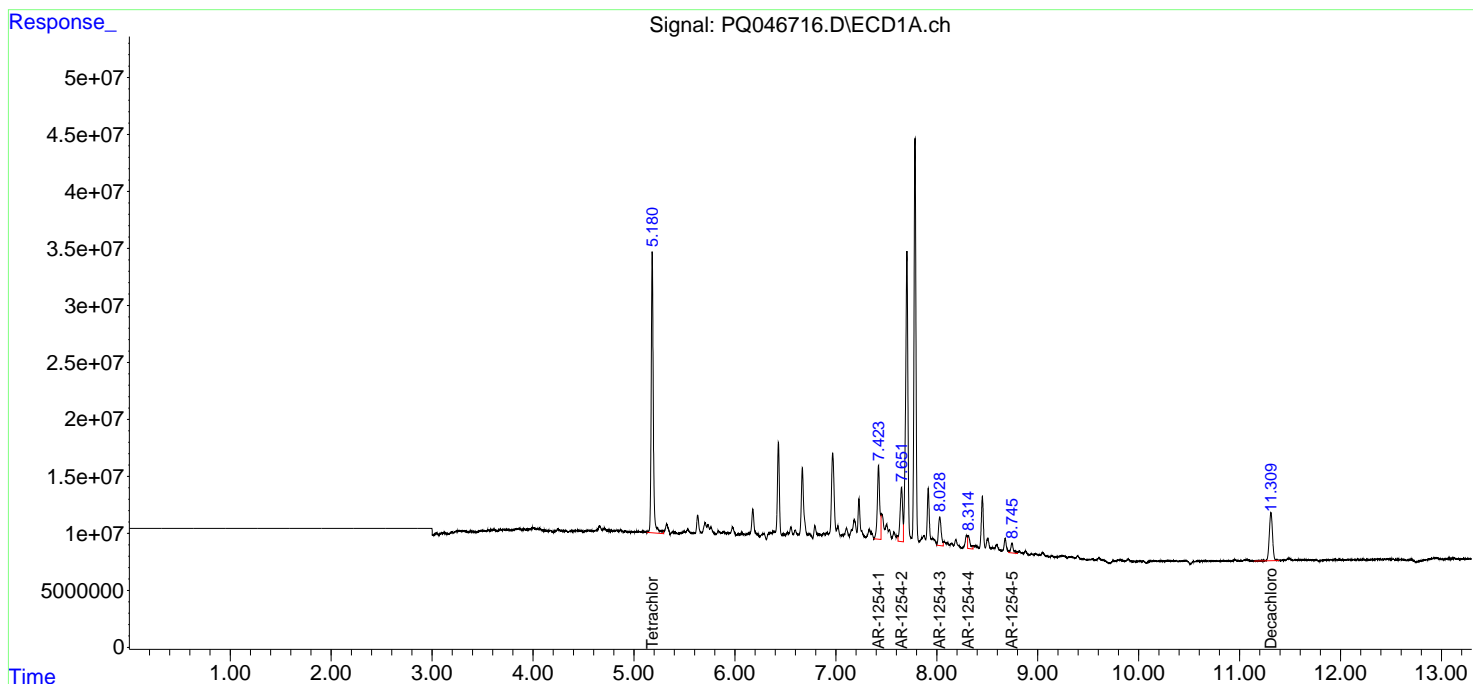
(f)=RT Delta > 1/2 Window (#)=Amounts differ by > 25% (m)=manual int.

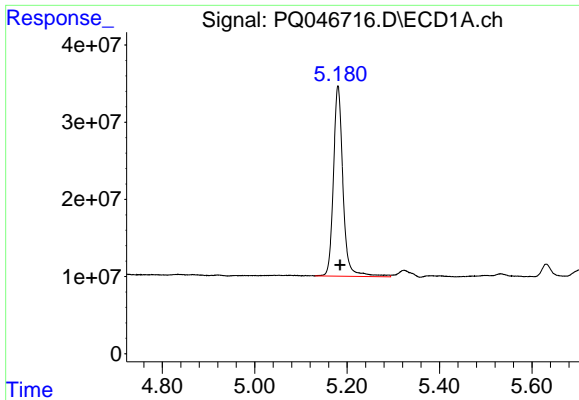
Data Path : Z:\pestpcbsrv\HPCHEM1\ECD_Q\Data\PQ030320\
 Data File : PQ046716.D
 Signal(s) : Signal #1: ECD1A.ch Signal #2: ECD2B.ch
 Acq On : 03 Mar 2020 19:19
 Operator : AJ\MA
 Sample : L1768-02
 Misc :
 ALS Vial : 26 Sample Multiplier: 1

Instrument :
 ECD_Q
 ClientSampled :
 S2-01-A

Integration File signal 1: autoint1.e
 Integration File signal 2: autoint2.e
 Quant Time: Mar 04 07:05:38 2020
 Quant Method : Z:\pestpcbsrv\HPCHEM1\ECD_Q\Method\PQ022120.M
 Quant Title : GC EXTRACTABLES
 QLast Update : Fri Feb 21 13:47:31 2020
 Response via : Initial Calibration
 Integrator: ChemStation

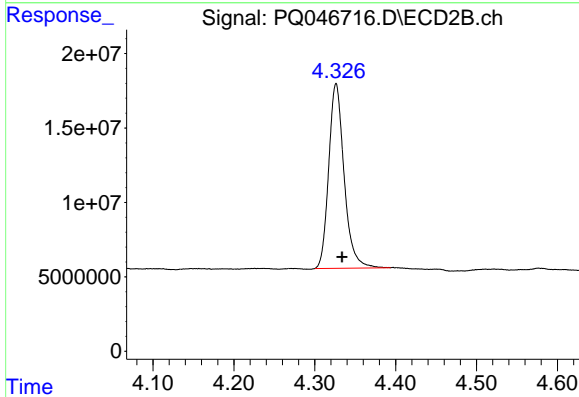
Volume Inj. : 2 µl
 Signal #1 Phase : ZB-MR1 Signal #2 Phase: ZB-MR2
 Signal #1 Info : 30Mx0.32mmx 0.50µ Signal #2 Info : 30M x 0.32mm x 0.25µm



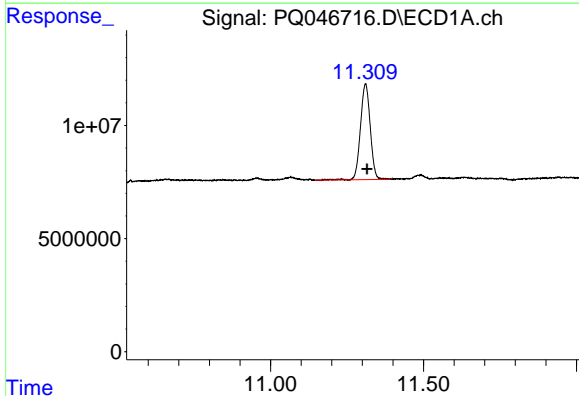


#1 Tetrachloro-m-xylene
 R.T.: 5.180 min
 Delta R.T.: -0.005 min
 Response: 354286975
 Conc: 23.32 ng/ml

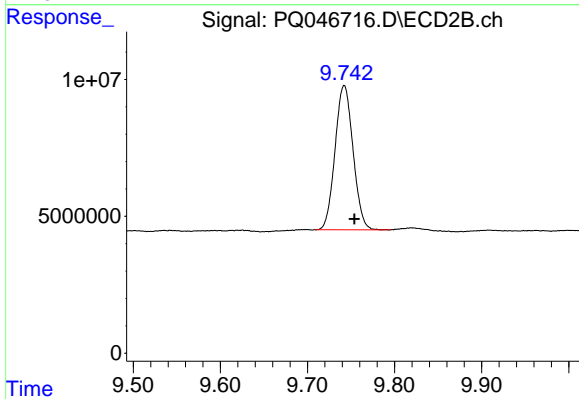
Instrument :
 ECD_Q
 ClientSampleId :
 S2-01-A



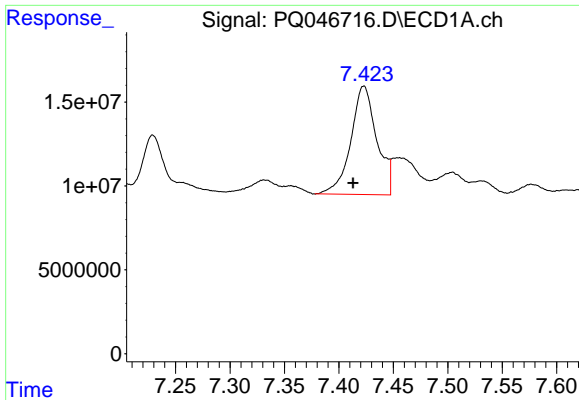
#1 Tetrachloro-m-xylene
 R.T.: 4.327 min
 Delta R.T.: -0.007 min
 Response: 164036950
 Conc: 21.57 ng/ml



#2 Decachlorobiphenyl
 R.T.: 11.310 min
 Delta R.T.: -0.005 min
 Response: 94068465
 Conc: 11.56 ng/ml



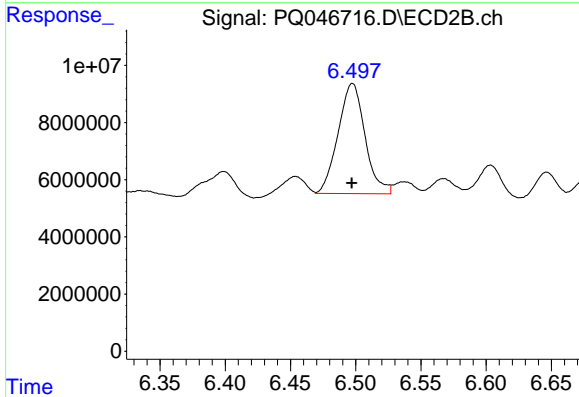
#2 Decachlorobiphenyl
 R.T.: 9.742 min
 Delta R.T.: -0.012 min
 Response: 75737693
 Conc: 10.93 ng/ml



#26 AR-1254-1

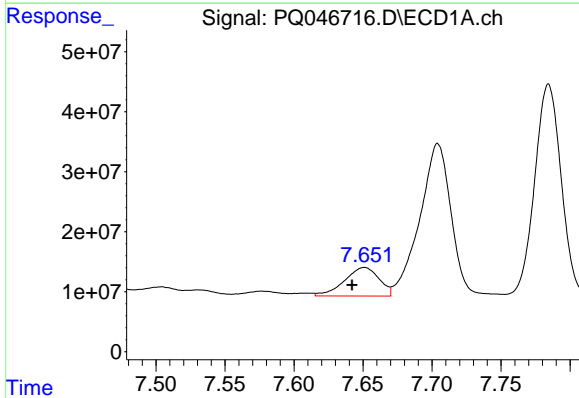
R.T.: 7.423 min
 Delta R.T.: 0.010 min
 Response: 107372306
 Conc: 229.42 ng/ml

Instrument :
 ECD_Q
 ClientSampled :
 S2-01-A



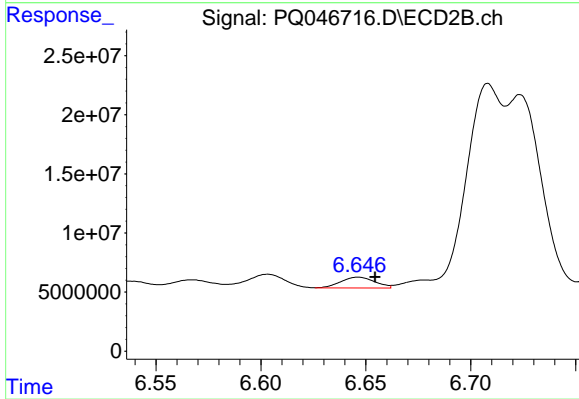
#26 AR-1254-1

R.T.: 6.497 min
 Delta R.T.: 0.000 min
 Response: 55443832
 Conc: 156.78 ng/ml m



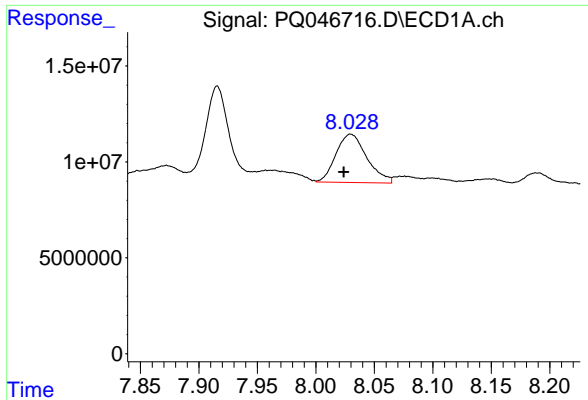
#27 AR-1254-2

R.T.: 7.651 min
 Delta R.T.: 0.009 min
 Response: 83346453
 Conc: 117.18 ng/ml



#27 AR-1254-2

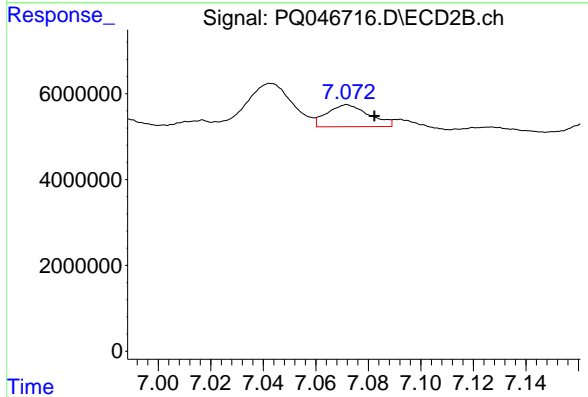
R.T.: 6.646 min
 Delta R.T.: -0.009 min
 Response: 10353627
 Conc: 33.86 ng/ml m



#28 AR-1254-3

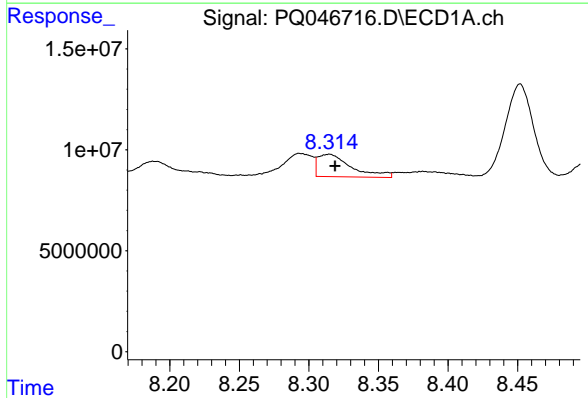
R.T.: 8.030 min
 Delta R.T.: 0.006 min
 Response: 46296228
 Conc: 63.84 ng/ml

Instrument :
 ECD_Q
 ClientSampled :
 S2-01-A



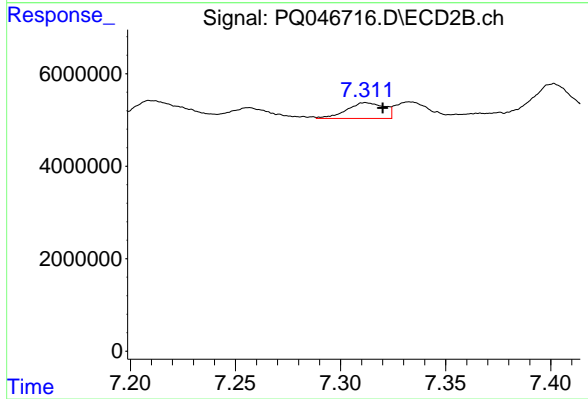
#28 AR-1254-3

R.T.: 7.072 min
 Delta R.T.: -0.011 min
 Response: 5623971
 Conc: 10.97 ng/ml m



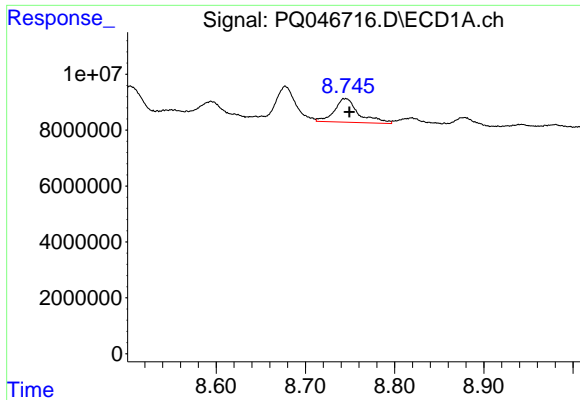
#29 AR-1254-4

R.T.: 8.315 min
 Delta R.T.: -0.004 min
 Response: 18617245
 Conc: 35.07 ng/ml



#29 AR-1254-4

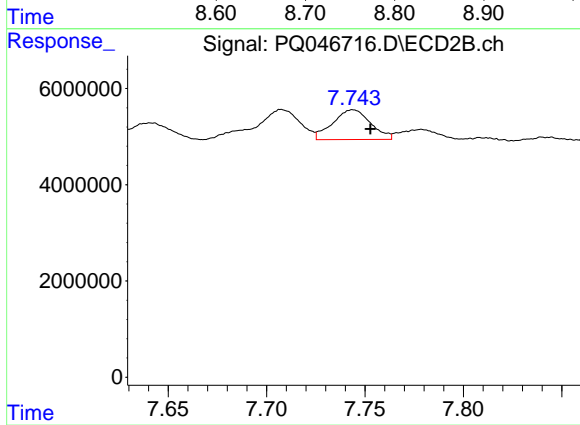
R.T.: 7.311 min
 Delta R.T.: -0.009 min
 Response: 4381471
 Conc: 13.91 ng/ml m



#30 AR-1254-5

R.T.: 8.745 min
Delta R.T.: -0.004 min
Response: 16145854
Conc: 31.52 ng/ml

Instrument :
ECD_Q
ClientSampleId :
S2-01-A



#30 AR-1254-5

R.T.: 7.744 min
Delta R.T.: -0.009 min
Response: 8310108
Conc: 18.92 ng/ml