

Data Path : Z:\pestpcbsrv\HPCHEM1\ECD_Q\Data\PQ030420\
 Data File : PQ046747.D
 Signal(s) : Signal #1: ECD1A.ch Signal #2: ECD2B.ch
 Acq On : 04 Mar 2020 20:35
 Operator : AJ\MA
 Sample : I.BLK
 Misc :
 ALS Vial : 2 Sample Multiplier: 1

Instrument :
 ECD_Q
 ClientSampled :

Integration File signal 1: autoint1.e
 Integration File signal 2: autoint2.e
 Quant Time: Mar 05 01:07:35 2020
 Quant Method : Z:\pestpcbsrv\HPCHEM1\ECD_Q\Method\PQ022120.M
 Quant Title : GC EXTRACTABLES
 QLast Update : Fri Feb 21 13:47:31 2020
 Response via : Initial Calibration
 Integrator: ChemStation

Volume Inj. : 2 µl
 Signal #1 Phase : ZB-MR2 Signal #2 Phase: ZB-MR2
 Signal #1 Info : 30Mx0.32mmx 0.50µ Signal #2 Info : 30M x 0.32mm x 0.25µm

Compound	RT#1	RT#2	Resp#1	Resp#2	ng/ml	ng/ml

System Monitoring Compounds						
1) SA Tetrachlo...	5.179	4.326	306.9E6	167.9E6	20.199	22.081
2) SA Decachlor...	11.310	9.743	147.1E6	106.5E6	18.076	15.380
Target Compounds						
9) L2 AR-1221-2	5.532	0.000	2068699	0	18.993	N.D. #
20) L4 AR-1242-5	7.446	0.000	881144	0	3.071	N.D. #
24) L5 AR-1248-4	7.446	0.000	881144	0	1.850	N.D. #
25) L5 AR-1248-5	7.446	0.000	881144	0	1.913	N.D. #
26) L6 AR-1254-1	7.412	0.000	9214197	0	19.688	N.D. #
27) L6 AR-1254-2	7.639	0.000	8952254	0	12.586	N.D. #
28) L6 AR-1254-3	8.018	7.074	32329085	25075912	44.582	48.919
29) L6 AR-1254-4	8.308	7.298	34631587	18817584	65.245	59.740
30) L6 AR-1254-5	8.743	7.742	63898434	45413726	124.729	103.417
31) L7 AR-1260-1	8.182	7.209	23525160	7213010	39.927	18.931 #
32) L7 AR-1260-2	8.451	7.396	21235142	11639608	30.845	25.250
33) L7 AR-1260-3	0.000	7.561	0	12862424	N.D.	29.847 #
34) L7 AR-1260-4	9.046	8.086	14514034	12565514	26.894	34.542 #
35) L7 AR-1260-5	9.396	0.000	6084508	0	5.846	N.D. #
36) L8 AR-1262-1	0.000	7.742	0	45413726	N.D.	185.665 #
37) L8 AR-1262-2	9.396	0.000	6084508	0	5.815	N.D. #
38) L8 AR-1262-3	9.741	0.000	5726801	0	8.463	N.D. #
41) L9 AR-1268-1	9.741	0.000	5726801	0	4.669	N.D. #

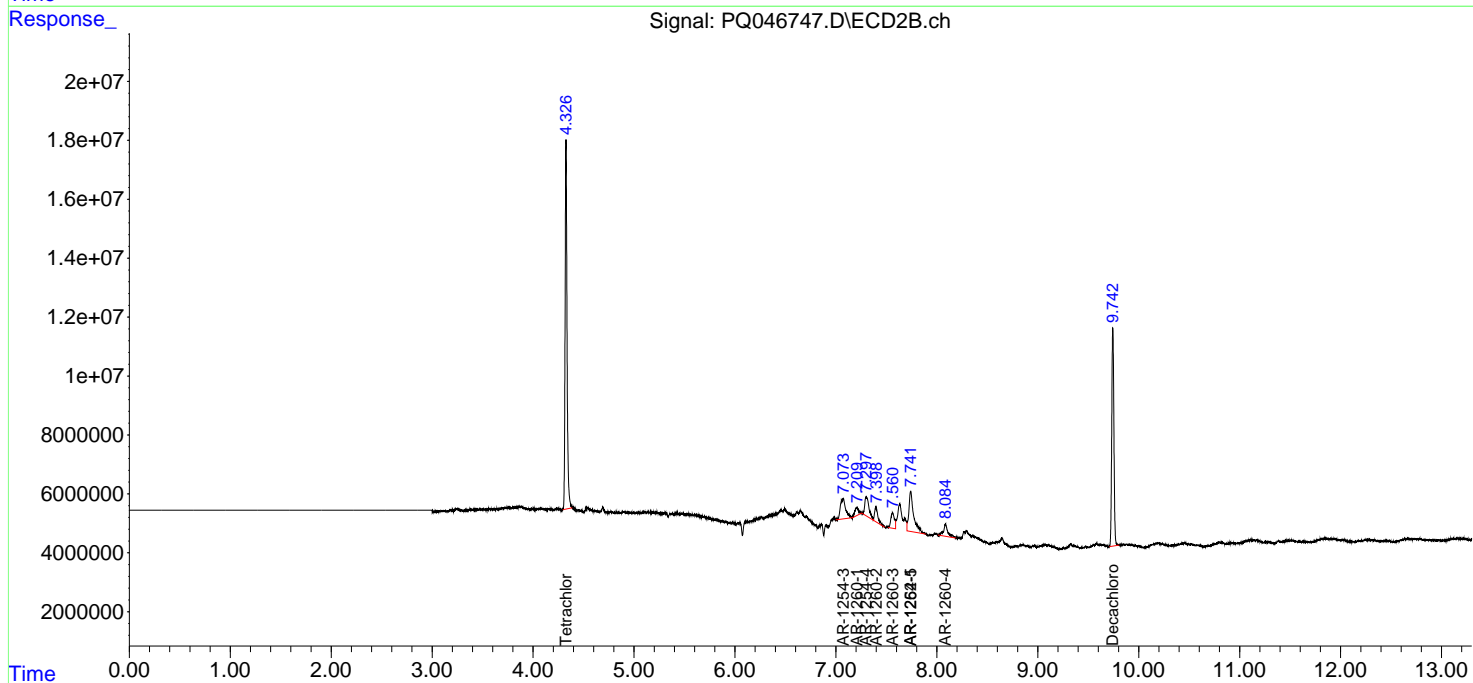
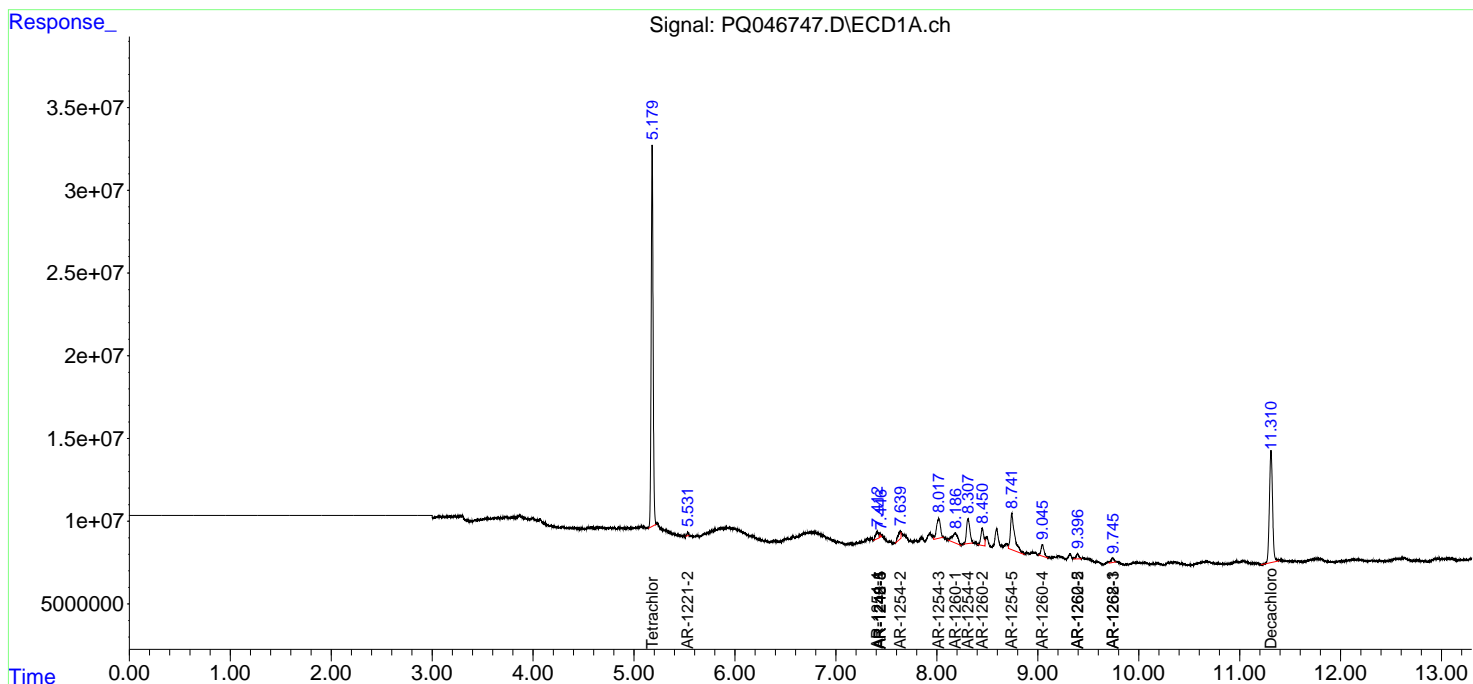
(f)=RT Delta > 1/2 Window (#)=Amounts differ by > 25% (m)=manual int.

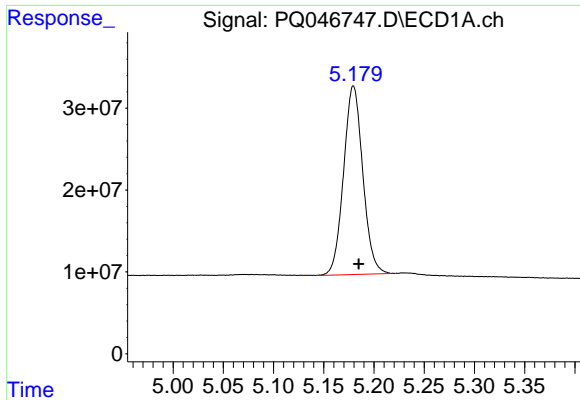
Data Path : Z:\pestpcbsrv\HPCHEM1\ECD_Q\Data\PQ030420\
 Data File : PQ046747.D
 Signal(s) : Signal #1: ECD1A.ch Signal #2: ECD2B.ch
 Acq On : 04 Mar 2020 20:35
 Operator : AJ\MA
 Sample : I.BLK
 Misc :
 ALS Vial : 2 Sample Multiplier: 1

Instrument :
 ECD_Q
 ClientSampled :

Integration File signal 1: autoint1.e
 Integration File signal 2: autoint2.e
 Quant Time: Mar 05 01:07:35 2020
 Quant Method : Z:\pestpcbsrv\HPCHEM1\ECD_Q\Method\PQ022120.M
 Quant Title : GC EXTRACTABLES
 QLast Update : Fri Feb 21 13:47:31 2020
 Response via : Initial Calibration
 Integrator: ChemStation

Volume Inj. : 2 µl
 Signal #1 Phase : ZB-MR1 Signal #2 Phase: ZB-MR2
 Signal #1 Info : 30Mx0.32mmx 0.50µ Signal #2 Info : 30M x 0.32mm x 0.25µm

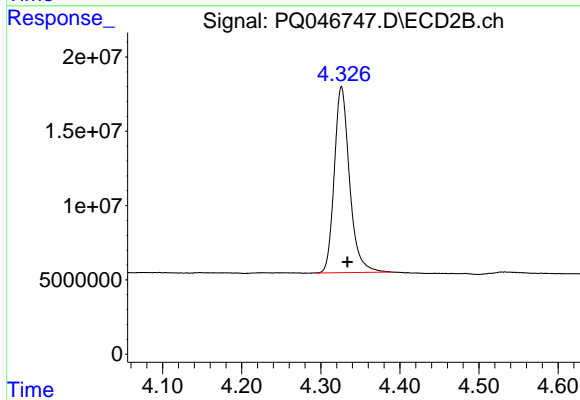




#1 Tetrachloro-m-xylene

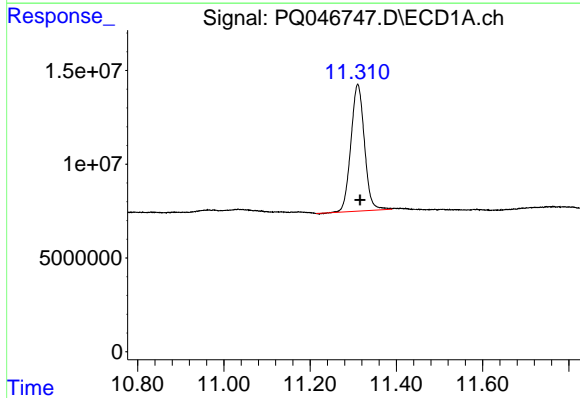
R.T.: 5.179 min
Delta R.T.: -0.006 min
Response: 306911968
Conc: 20.20 ng/ml

Instrument :
ECD_Q
ClientSampleId :



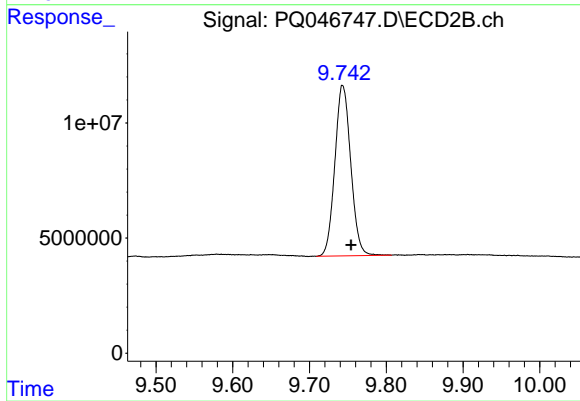
#1 Tetrachloro-m-xylene

R.T.: 4.326 min
Delta R.T.: -0.008 min
Response: 167895497
Conc: 22.08 ng/ml



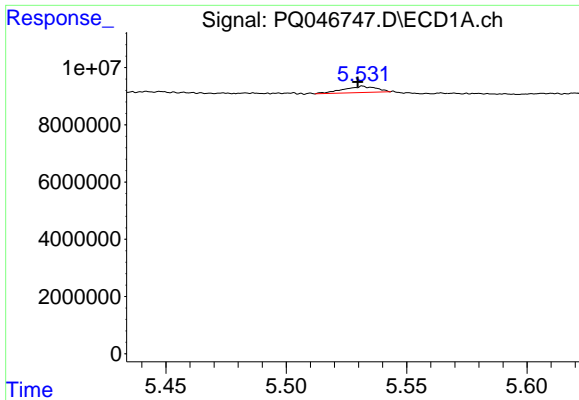
#2 Decachlorobiphenyl

R.T.: 11.310 min
Delta R.T.: -0.005 min
Response: 147148780
Conc: 18.08 ng/ml



#2 Decachlorobiphenyl

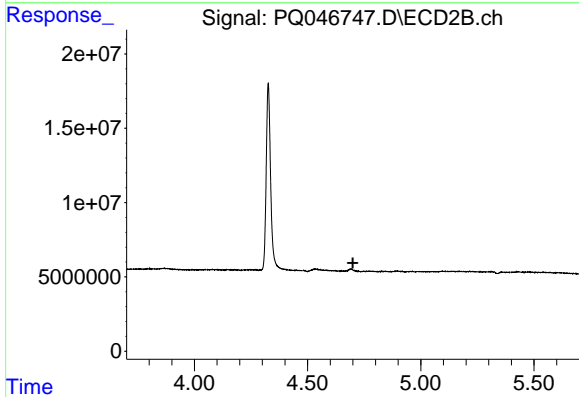
R.T.: 9.743 min
Delta R.T.: -0.011 min
Response: 106538728
Conc: 15.38 ng/ml



#9 AR-1221-2

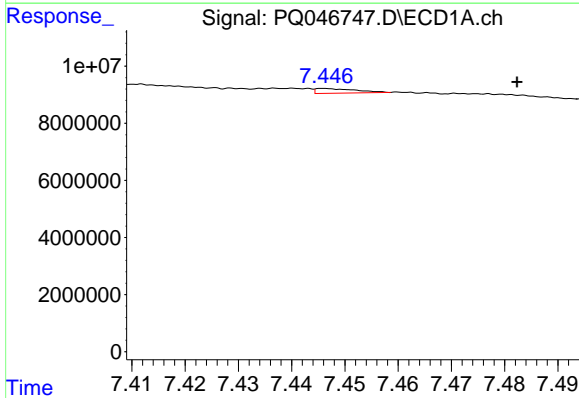
R.T.: 5.532 min
 Delta R.T.: 0.002 min
 Response: 2068699
 Conc: 18.99 ng/ml

Instrument :
 ECD_Q
 ClientSampled :



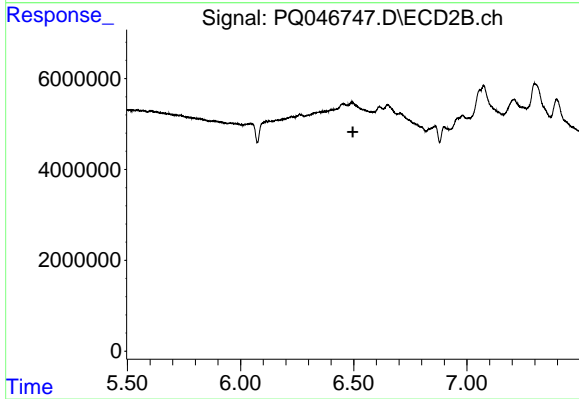
#9 AR-1221-2

R.T.: 0.000 min
 Exp R.T. : 4.700 min
 Response: 0
 Conc: N.D.



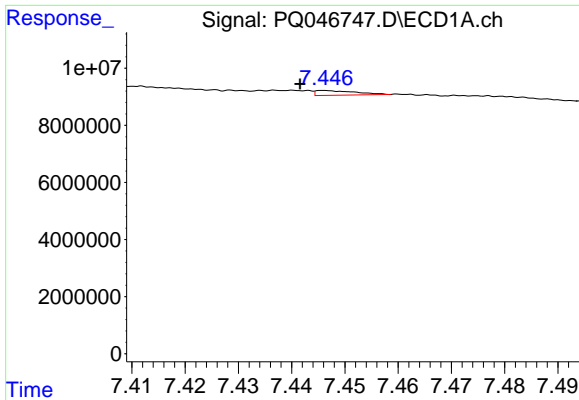
#20 AR-1242-5

R.T.: 7.446 min
 Delta R.T.: -0.036 min
 Response: 881144
 Conc: 3.07 ng/ml



#20 AR-1242-5

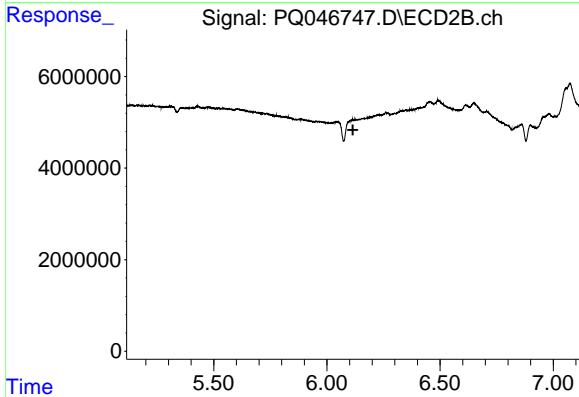
R.T.: 0.000 min
 Exp R.T. : 6.496 min
 Response: 0
 Conc: N.D.



#24 AR-1248-4

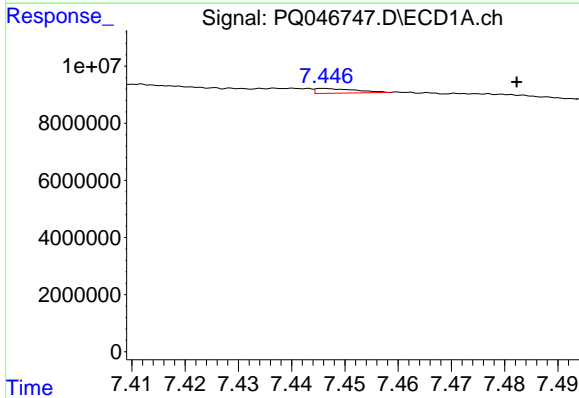
R.T.: 7.446 min
 Delta R.T.: 0.005 min
 Response: 881144
 Conc: 1.85 ng/ml

Instrument :
 ECD_Q
 ClientSampled :



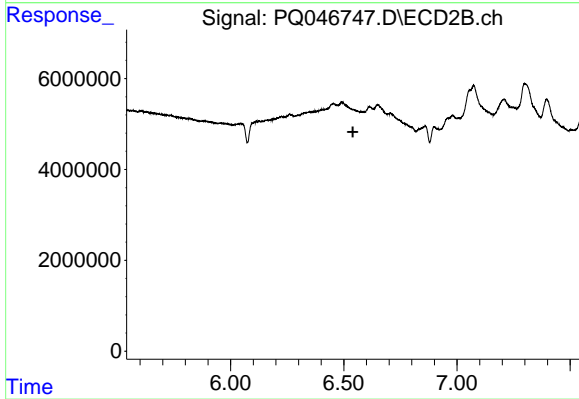
#24 AR-1248-4

R.T.: 0.000 min
 Exp R.T. : 6.115 min
 Response: 0
 Conc: N.D.



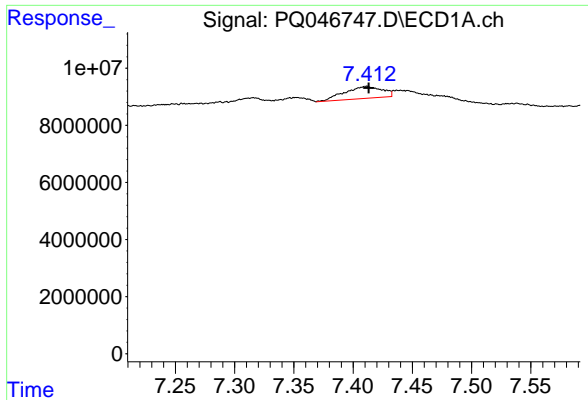
#25 AR-1248-5

R.T.: 7.446 min
 Delta R.T.: -0.036 min
 Response: 881144
 Conc: 1.91 ng/ml



#25 AR-1248-5

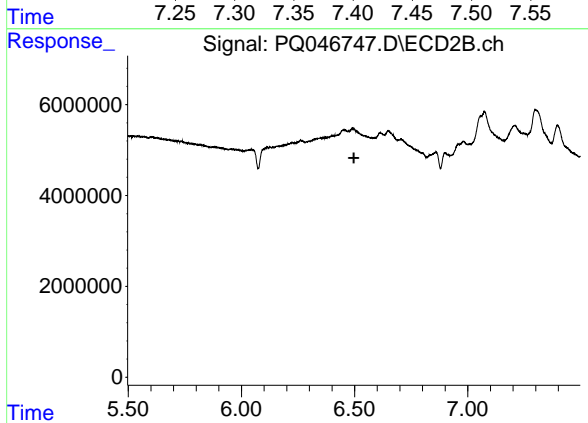
R.T.: 0.000 min
 Exp R.T. : 6.540 min
 Response: 0
 Conc: N.D.



#26 AR-1254-1

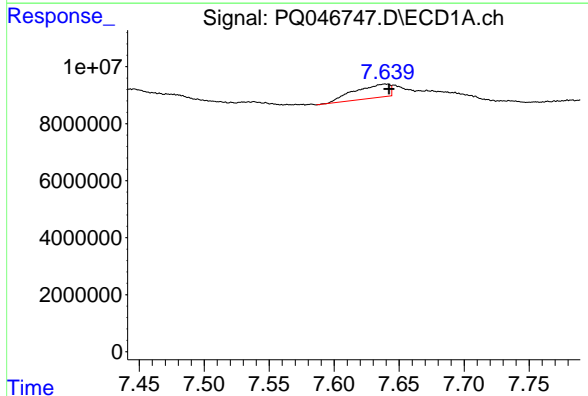
R.T.: 7.412 min
 Delta R.T.: -0.001 min
 Response: 9214197
 Conc: 19.69 ng/ml

Instrument :
 ECD_Q
 ClientSampleId :



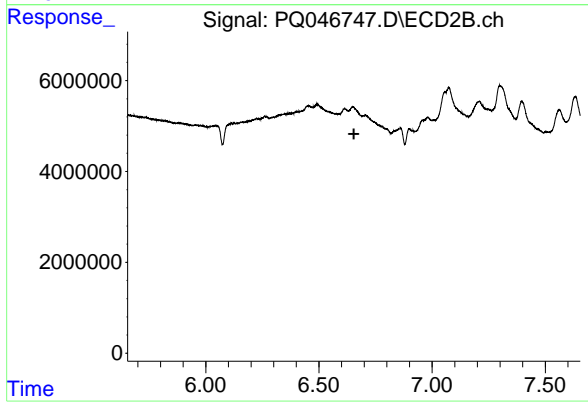
#26 AR-1254-1

R.T.: 0.000 min
 Exp R.T. : 6.497 min
 Response: 0
 Conc: N.D.



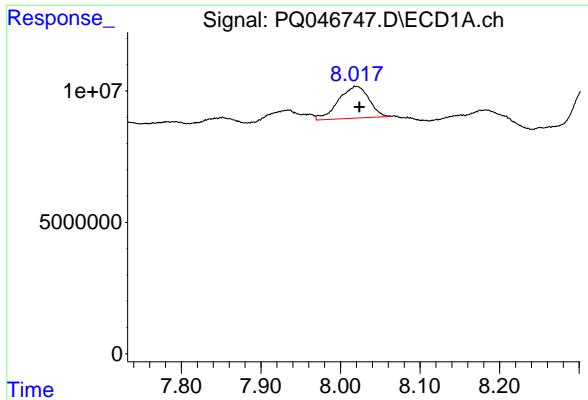
#27 AR-1254-2

R.T.: 7.639 min
 Delta R.T.: -0.003 min
 Response: 8952254
 Conc: 12.59 ng/ml



#27 AR-1254-2

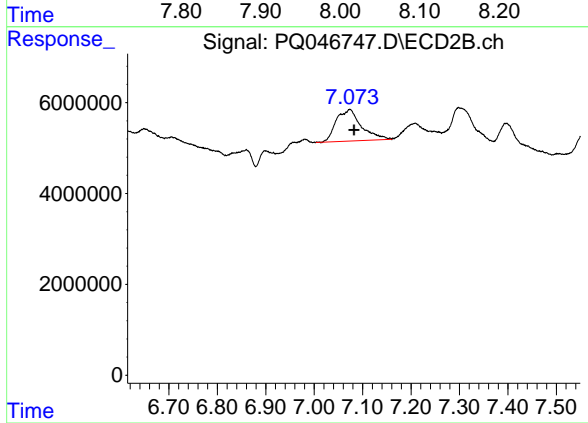
R.T.: 0.000 min
 Exp R.T. : 6.654 min
 Response: 0
 Conc: N.D.



#28 AR-1254-3

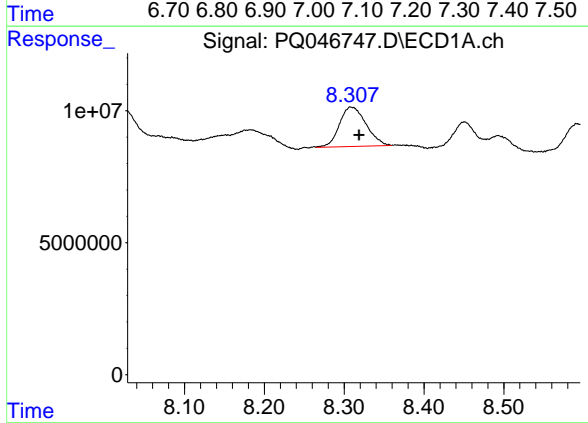
R.T.: 8.018 min
 Delta R.T.: -0.006 min
 Response: 32329085
 Conc: 44.58 ng/ml

Instrument :
 ECD_Q
 ClientSampleId :



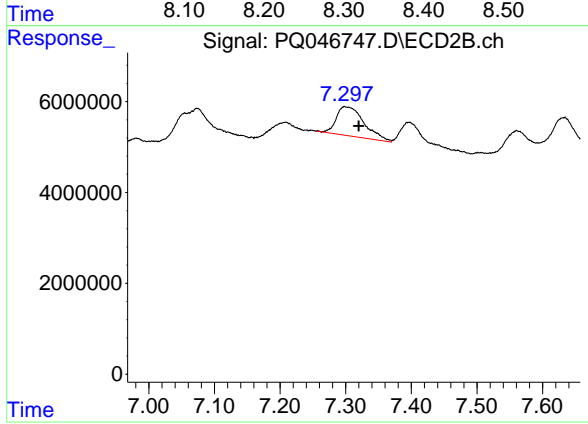
#28 AR-1254-3

R.T.: 7.074 min
 Delta R.T.: -0.009 min
 Response: 25075912
 Conc: 48.92 ng/ml



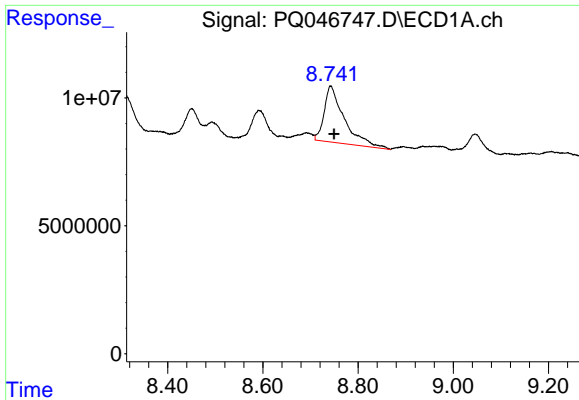
#29 AR-1254-4

R.T.: 8.308 min
 Delta R.T.: -0.011 min
 Response: 34631587
 Conc: 65.25 ng/ml



#29 AR-1254-4

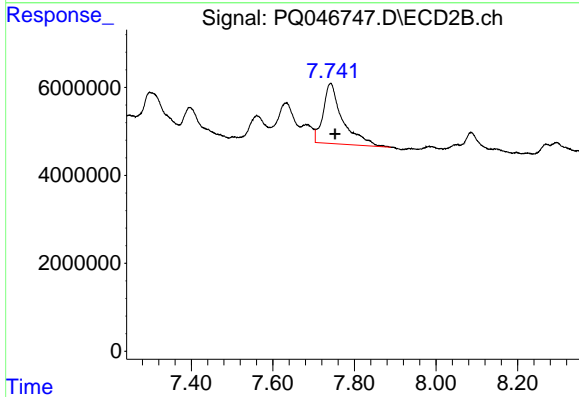
R.T.: 7.298 min
 Delta R.T.: -0.022 min
 Response: 18817584
 Conc: 59.74 ng/ml



#30 AR-1254-5

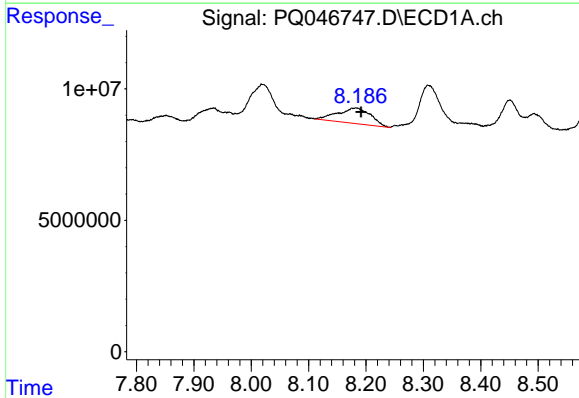
R.T.: 8.743 min
 Delta R.T.: -0.006 min
 Response: 63898434
 Conc: 124.73 ng/ml

Instrument :
 ECD_Q
 ClientSampleId :



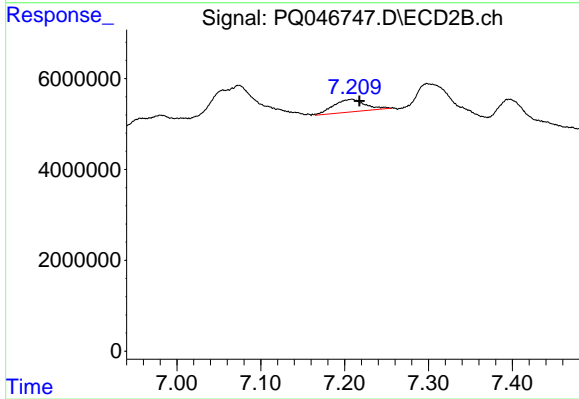
#30 AR-1254-5

R.T.: 7.742 min
 Delta R.T.: -0.011 min
 Response: 45413726
 Conc: 103.42 ng/ml



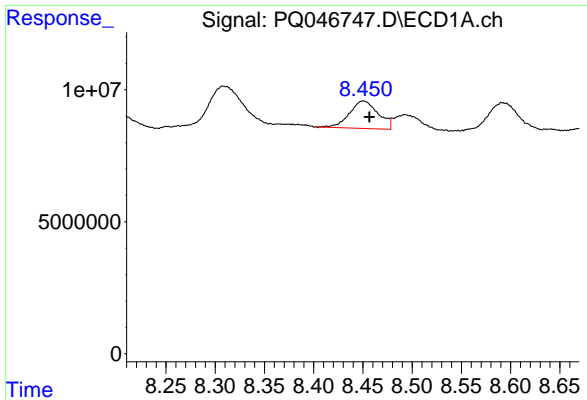
#31 AR-1260-1

R.T.: 8.182 min
 Delta R.T.: -0.009 min
 Response: 23525160
 Conc: 39.93 ng/ml



#31 AR-1260-1

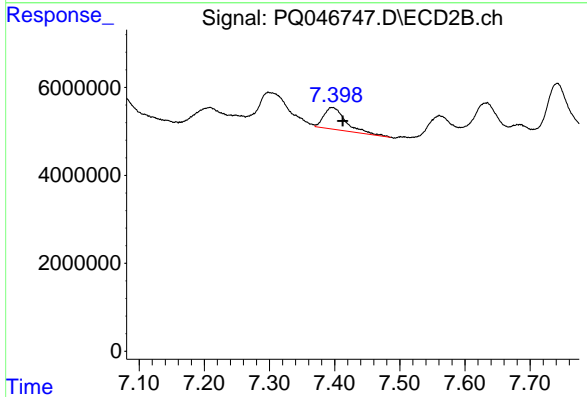
R.T.: 7.209 min
 Delta R.T.: -0.009 min
 Response: 7213010
 Conc: 18.93 ng/ml



#32 AR-1260-2

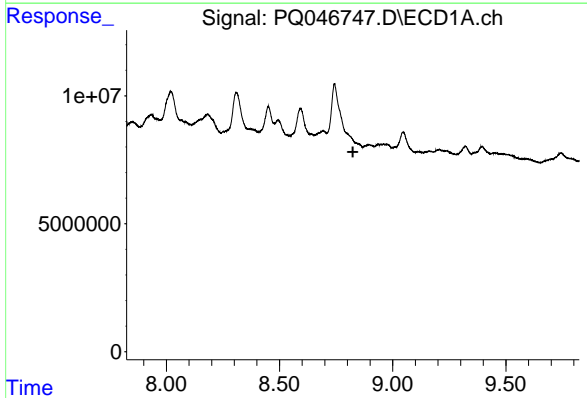
R.T.: 8.451 min
 Delta R.T.: -0.006 min
 Response: 21235142
 Conc: 30.84 ng/ml

Instrument :
 ECD_Q
 ClientSampleId :



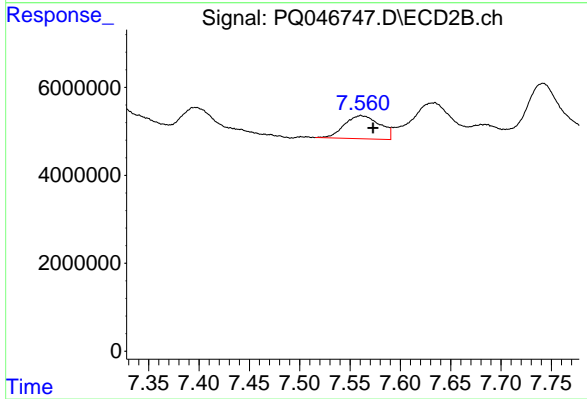
#32 AR-1260-2

R.T.: 7.396 min
 Delta R.T.: -0.016 min
 Response: 11639608
 Conc: 25.25 ng/ml



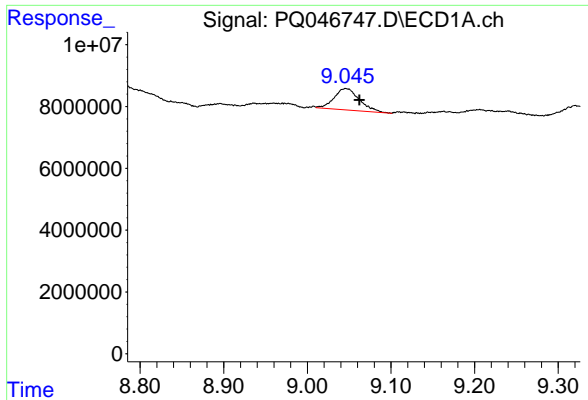
#33 AR-1260-3

R.T.: 0.000 min
 Exp R.T. : 8.824 min
 Response: 0
 Conc: N.D.



#33 AR-1260-3

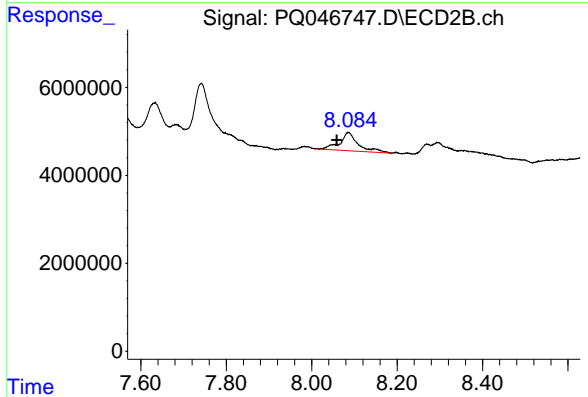
R.T.: 7.561 min
 Delta R.T.: -0.012 min
 Response: 12862424
 Conc: 29.85 ng/ml



#34 AR-1260-4

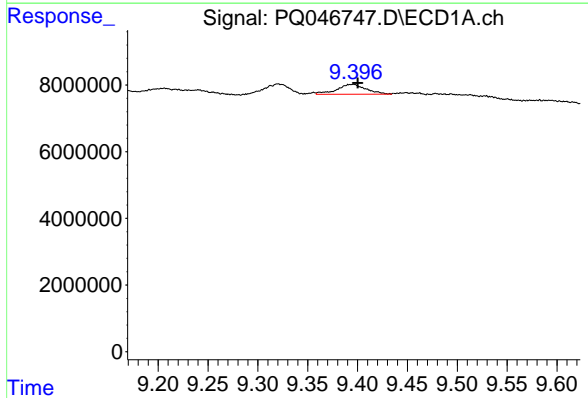
R.T.: 9.046 min
 Delta R.T.: -0.016 min
 Response: 14514034
 Conc: 26.89 ng/ml

Instrument :
 ECD_Q
 ClientSampled :



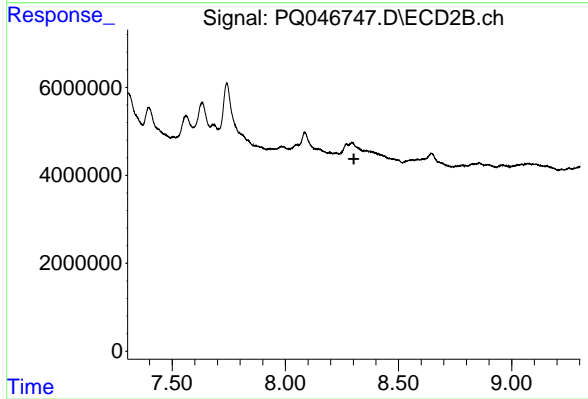
#34 AR-1260-4

R.T.: 8.086 min
 Delta R.T.: 0.028 min
 Response: 12565514
 Conc: 34.54 ng/ml



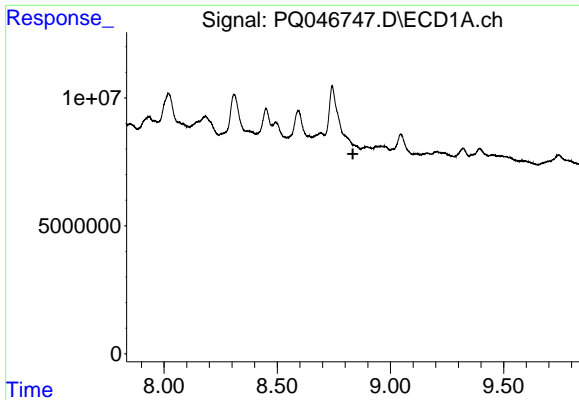
#35 AR-1260-5

R.T.: 9.396 min
 Delta R.T.: -0.004 min
 Response: 6084508
 Conc: 5.85 ng/ml



#35 AR-1260-5

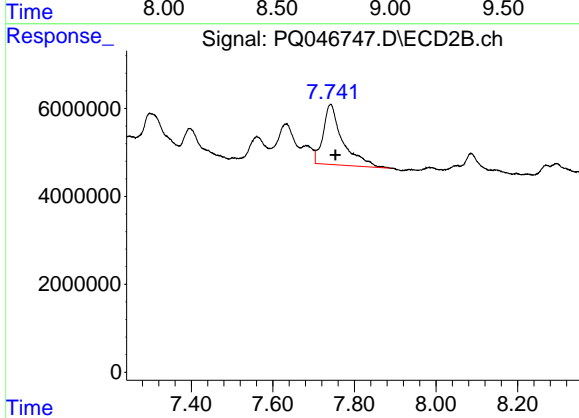
R.T.: 0.000 min
 Exp R.T.: 8.303 min
 Response: 0
 Conc: N.D.



#36 AR-1262-1

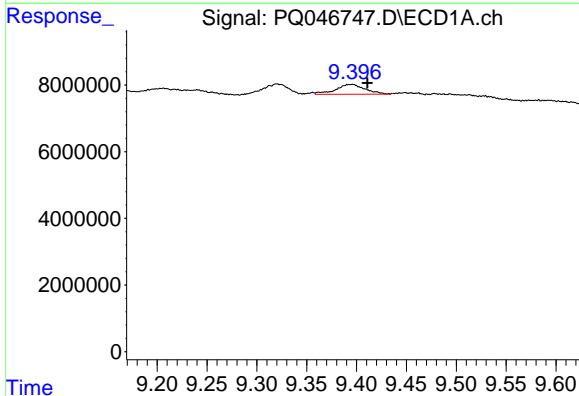
R.T.: 0.000 min
 Exp R.T.: 8.834 min
 Response: 0
 Conc: N.D.

Instrument :
 ECD_Q
 ClientSampled :



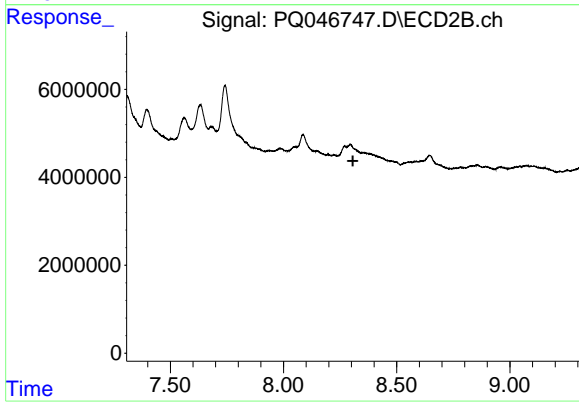
#36 AR-1262-1

R.T.: 7.742 min
 Delta R.T.: -0.012 min
 Response: 45413726
 Conc: 185.67 ng/ml



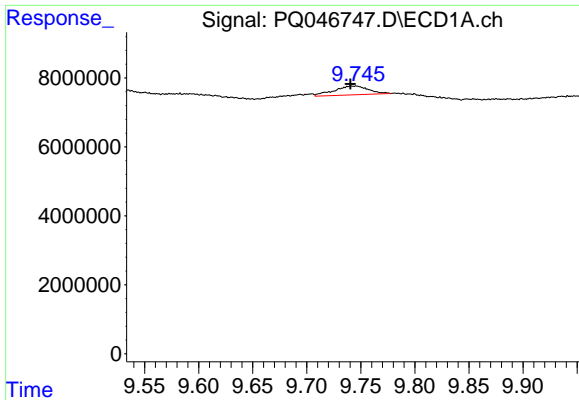
#37 AR-1262-2

R.T.: 9.396 min
 Delta R.T.: -0.015 min
 Response: 6084508
 Conc: 5.82 ng/ml



#37 AR-1262-2

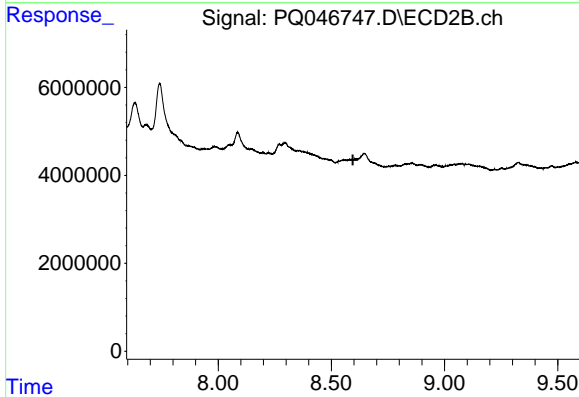
R.T.: 0.000 min
 Exp R.T.: 8.306 min
 Response: 0
 Conc: N.D.



#38 AR-1262-3

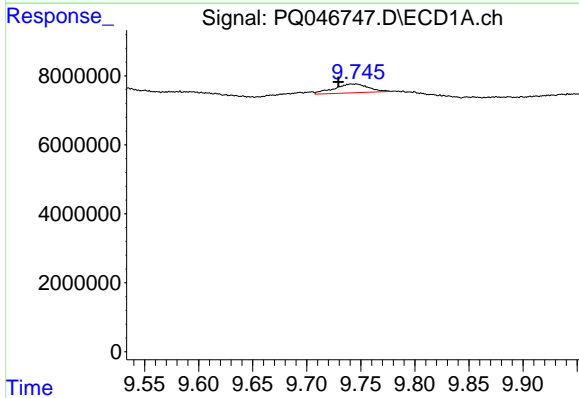
R.T.: 9.741 min
 Delta R.T.: 0.000 min
 Response: 5726801
 Conc: 8.46 ng/ml

Instrument :
 ECD_Q
 ClientSampled :



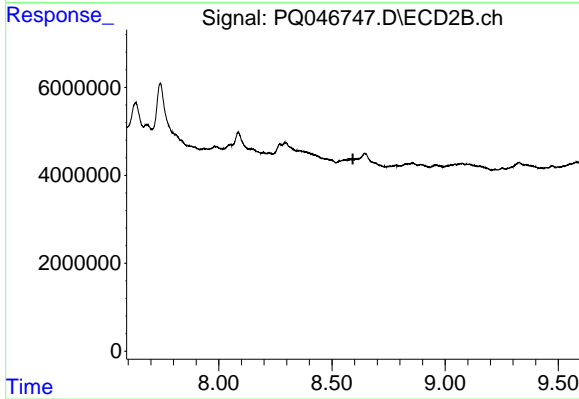
#38 AR-1262-3

R.T.: 0.000 min
 Exp R.T. : 8.595 min
 Response: 0
 Conc: N.D.



#41 AR-1268-1

R.T.: 9.741 min
 Delta R.T.: 0.012 min
 Response: 5726801
 Conc: 4.67 ng/ml



#41 AR-1268-1

R.T.: 0.000 min
 Exp R.T. : 8.592 min
 Response: 0
 Conc: N.D.