

Data Path : Z:\pestpcbsrv\HPCHEM1\ECD\_Q\Data\PQ031020\  
 Data File : PQ046853.D  
 Signal(s) : Signal #1: ECD1A.ch Signal #2: ECD2B.ch  
 Acq On : 10 Mar 2020 18:48  
 Operator : AJ\MA  
 Sample : AR1660CCC500  
 Misc :  
 ALS Vial : 3 Sample Multiplier: 1

Instrument :  
 ECD\_Q  
 ClientSampled :  
 AR1660CCC500

Integration File signal 1: autoint1.e  
 Integration File signal 2: autoint2.e  
 Quant Time: Mar 11 04:03:41 2020  
 Quant Method : Z:\pestpcbsrv\HPCHEM1\ECD\_Q\Method\PQ030920.M  
 Quant Title : GC EXTRACTABLES  
 QLast Update : Tue Mar 10 04:56:12 2020  
 Response via : Initial Calibration  
 Integrator: ChemStation

Volume Inj. : 2 µl  
 Signal #1 Phase : ZB-MR1 Signal #2 Phase: ZB-MR2  
 Signal #1 Info : 30Mx0.32mmx 0.50µ Signal #2 Info : 30M x 0.32mm x 0.25µm

Compound	RT#1	RT#2	Resp#1	Resp#2	ng/ml	ng/ml
System Monitoring Compounds						
1) SA Tetrachlo...	5.180	4.322	1101.1E6	467.6E6	58.921	51.828
2) SA Decachlor...	11.305	9.737	534.2E6	357.1E6	56.195	48.763
Target Compounds						
3) L1 AR-1016-1	6.496	5.604	365.9E6	160.1E6	538.638	492.094
4) L1 AR-1016-2	6.520	5.625	540.9E6	231.3E6	542.324	491.015
5) L1 AR-1016-3	6.587	5.822	312.3E6	123.5E6	529.777	513.337
6) L1 AR-1016-4	6.693	5.869	260.1E6	95307441	523.623	486.065
7) L1 AR-1016-5	7.009	6.103	242.4E6	150.9E6	516.275	581.727
8) L2 AR-1221-1	5.420	4.584	24298679	22349149	140.180	265.119 #
9) L2 AR-1221-2	5.525	4.688	71010772	35590441	549.894	572.674
10) L2 AR-1221-3	5.611	4.780	191.4E6	86120355	472.893	438.371
11) L3 AR-1232-1	5.611	4.780	191.4E6	86120355	550.885	517.637
12) L3 AR-1232-2	6.202	5.625	260.6E6	231.3E6	1408.076	1355.387
13) L3 AR-1232-3	6.520	5.822	540.9E6	123.5E6	1455.644	1434.976
14) L3 AR-1232-4	6.693	5.914	260.1E6	116.0E6	1403.018	1511.124
15) L3 AR-1232-5	6.791	6.103	216.8E6	150.9E6	1588.119	1724.733
16) L4 AR-1242-1	6.496	5.604	365.9E6	160.1E6	769.655	727.112
17) L4 AR-1242-2	6.520	5.625	540.9E6	231.3E6	784.363	709.210
18) L4 AR-1242-3	6.587	5.822	312.3E6	123.5E6	755.024	751.048
19) L4 AR-1242-4	6.693	5.914	260.1E6	116.0E6	748.812	714.102
20) L4 AR-1242-5	7.477	6.485	41037650	101.7E6	115.282	486.127 #
21) L5 AR-1248-1	6.496	5.604	365.9E6	160.1E6	994.418	923.729
22) L5 AR-1248-2	6.791	5.869	216.8E6	95307441	433.844	415.274
23) L5 AR-1248-3	7.009	5.914	242.4E6	116.0E6	438.256	482.415
24) L5 AR-1248-4	7.435	6.103	44559726	150.9E6	70.060	509.046 #
25) L5 AR-1248-5	7.477	6.528	41037650	28076189	67.841	95.851 #
26) L6 AR-1254-1	7.407	6.485	167.4E6	101.7E6	315.905	266.655
27) L6 AR-1254-2	7.636	6.642	177.7E6	91871038	224.722	280.896
28) L6 AR-1254-3	8.018	7.084	95875774	144.0E6	129.162	265.942 #
29) L6 AR-1254-4	8.313	7.308	73699578	17806570	127.350	54.188 #
30) L6 AR-1254-5	8.741	7.739	525.0E6	267.9E6	850.602	579.490 #
31) L7 AR-1260-1	8.187	7.204	386.7E6	203.0E6	550.153	423.406
32) L7 AR-1260-2	8.450	7.400	514.3E6	244.5E6	570.793	424.035 #
33) L7 AR-1260-3	8.818	7.560	398.1E6	226.3E6	578.683	425.391 #
34) L7 AR-1260-4	9.056	8.045	366.0E6	190.5E6	573.548	458.949
35) L7 AR-1260-5	9.393	8.290	791.8E6	480.6E6	603.282	473.336
36) L8 AR-1262-1	8.818	7.739	398.1E6	267.9E6	540.859	1107.827 #
37) L8 AR-1262-2	9.393	8.290	791.8E6	480.6E6	724.969	571.236
38) L8 AR-1262-3	9.739	8.579	463.7E6	99068245	651.626	323.195 #
39) L8 AR-1262-4	9.798	8.644	328.0E6	342.2E6	585.863	583.977
40) L8 AR-1262-5	10.511	9.156	201.0E6	116.3E6	561.986	469.415
41) L9 AR-1268-1	9.739	8.579	463.7E6	99068245	1188.463	362.210 #

Data Path : Z:\pestpcbsrv\HPCHEM1\ECD\_Q\Data\PQ031020\  
 Data File : PQ046853.D  
 Signal(s) : Signal #1: ECD1A.ch Signal #2: ECD2B.ch  
 Acq On : 10 Mar 2020 18:48  
 Operator : AJ\MA  
 Sample : AR1660CCC500  
 Misc :  
 ALS Vial : 3 Sample Multiplier: 1

Instrument :  
 ECD\_Q  
 ClientSampleId :  
 AR1660CCC500

Integration File signal 1: autoint1.e  
 Integration File signal 2: autoint2.e  
 Quant Time: Mar 11 04:03:41 2020  
 Quant Method : Z:\pestpcbsrv\HPCHEM1\ECD\_Q\Method\PQ030920.M  
 Quant Title : GC EXTRACTABLES  
 QLast Update : Tue Mar 10 04:56:12 2020  
 Response via : Initial Calibration  
 Integrator: ChemStation

Volume Inj. : 2 µl  
 Signal #1 Phase : ZB-MR1 Signal #2 Phase: ZB-MR2  
 Signal #1 Info : 30Mx0.32mmx 0.50µ Signal #2 Info : 30M x 0.32mm x 0.25µm

	Compound	RT#1	RT#2	Resp#1	Resp#2	ng/ml	ng/ml
42)	L9 AR-1268-2	9.798	8.644	328.0E6	342.2E6	921.007	1358.923 #
43)	L9 AR-1268-3	10.059	8.855	28992336	6163496	98.154	29.977 #
44)	L9 AR-1268-4	10.511	9.156	201.0E6	116.3E6	1678.958	1443.193
45)	L9 AR-1268-5	10.947	9.466	51690118	29001219	63.966	47.317 #

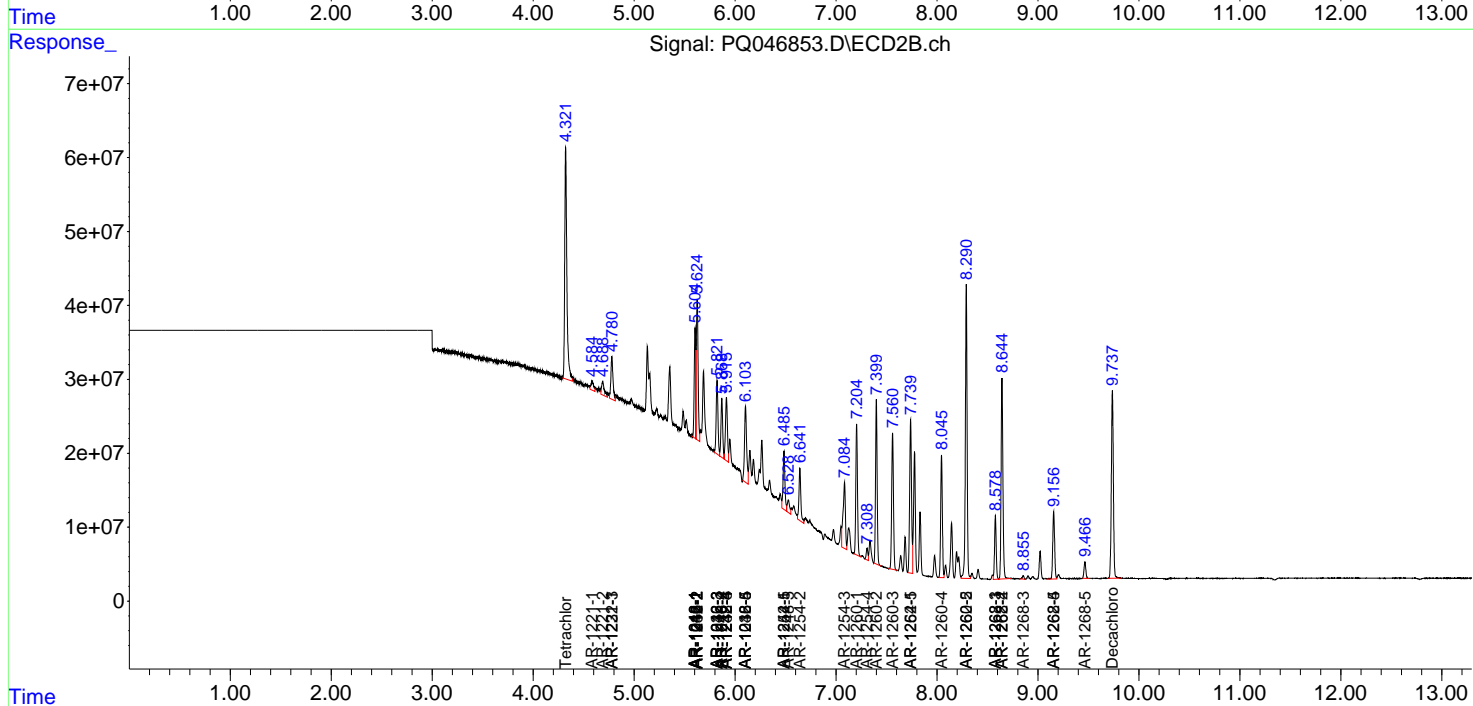
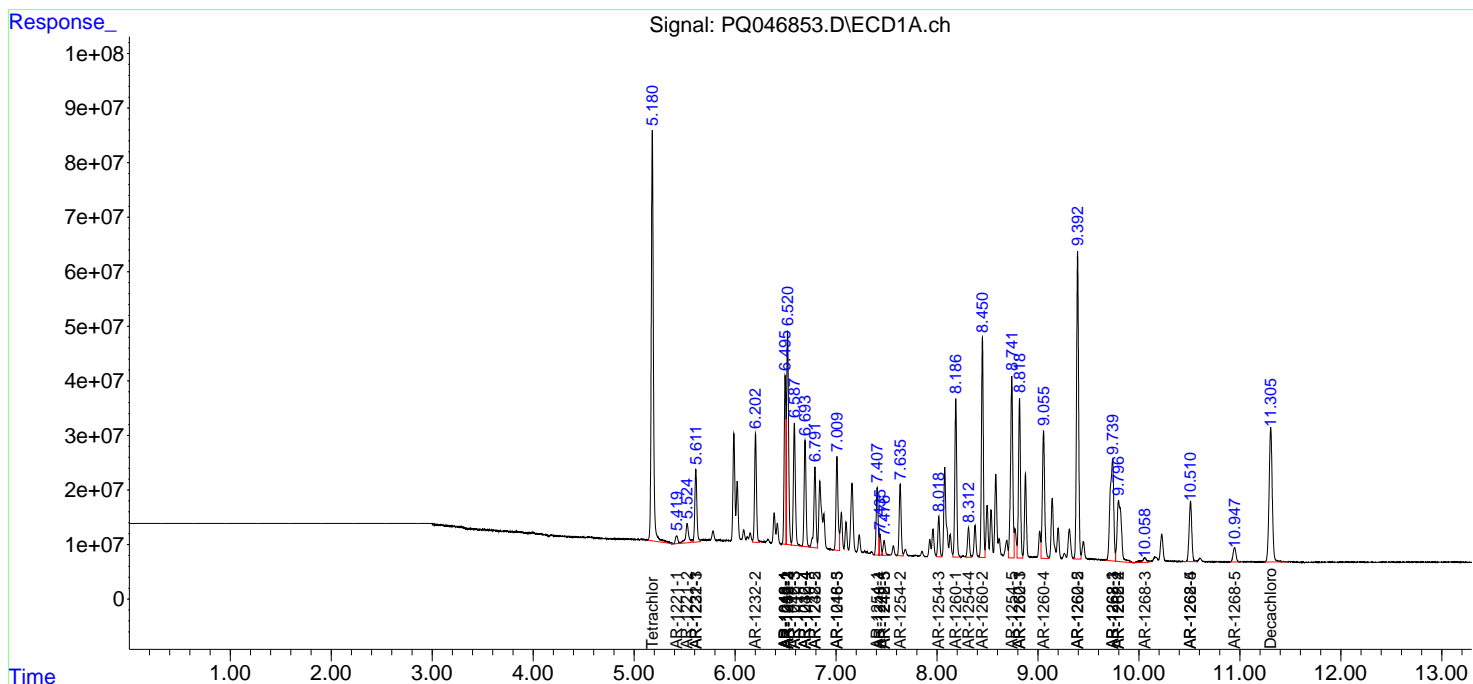
(f)=RT Delta > 1/2 Window (#)=Amounts differ by > 25% (m)=manual int.

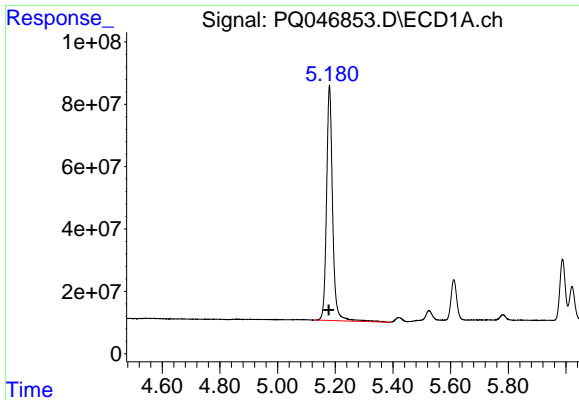
Data Path : Z:\pestpcbsrv\HPCHEM1\ECD\_Q\Data\PQ031020\  
 Data File : PQ046853.D  
 Signal(s) : Signal #1: ECD1A.ch Signal #2: ECD2B.ch  
 Acq On : 10 Mar 2020 18:48  
 Operator : AJ\MA  
 Sample : AR1660CCC500  
 Misc :  
 ALS Vial : 3 Sample Multiplier: 1

Instrument :  
 ECD\_Q  
 ClientSampled :  
 AR1660CCC500

Integration File signal 1: autoint1.e  
 Integration File signal 2: autoint2.e  
 Quant Time: Mar 11 04:03:41 2020  
 Quant Method : Z:\pestpcbsrv\HPCHEM1\ECD\_Q\Method\PQ030920.M  
 Quant Title : GC EXTRACTABLES  
 QLast Update : Tue Mar 10 04:56:12 2020  
 Response via : Initial Calibration  
 Integrator: ChemStation

Volume Inj. : 2 µl  
 Signal #1 Phase : ZB-MR1 Signal #2 Phase: ZB-MR2  
 Signal #1 Info : 30Mx0.32mmx 0.50µ Signal #2 Info : 30M x 0.32mm x 0.25µm

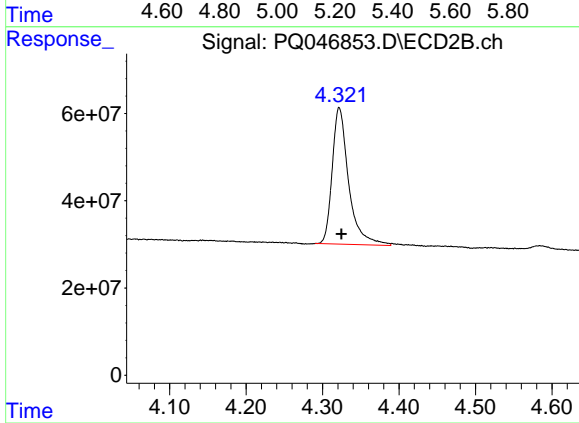




#1 Tetrachloro-m-xylene

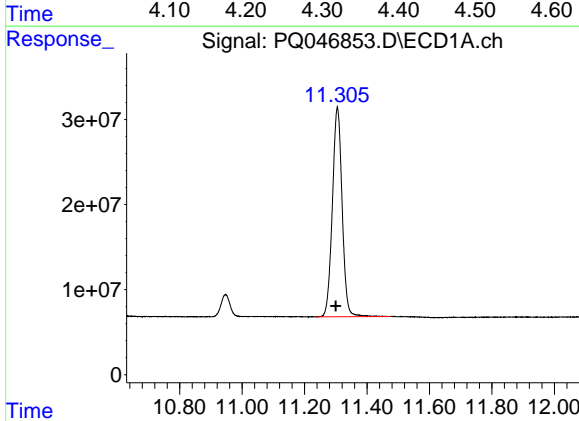
R.T.: 5.180 min  
Delta R.T.: 0.002 min  
Response: 1101149170  
Conc: 58.92 ng/ml

Instrument :  
ECD\_Q  
ClientSampleId :  
AR1660CCC500



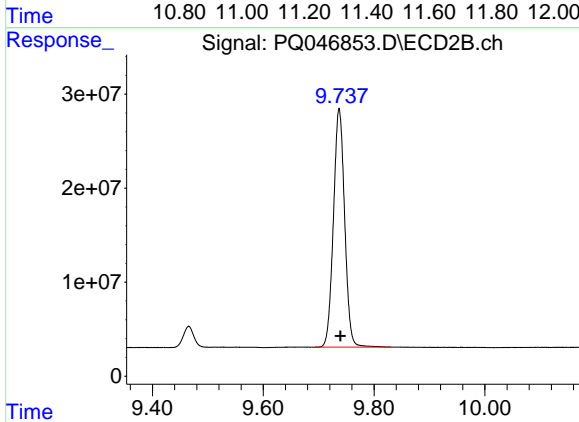
#1 Tetrachloro-m-xylene

R.T.: 4.322 min  
Delta R.T.: -0.003 min  
Response: 467576520  
Conc: 51.83 ng/ml



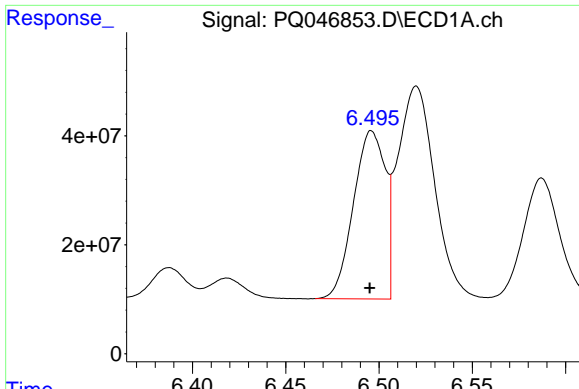
#2 Decachlorobiphenyl

R.T.: 11.305 min  
Delta R.T.: 0.006 min  
Response: 534217823  
Conc: 56.19 ng/ml



#2 Decachlorobiphenyl

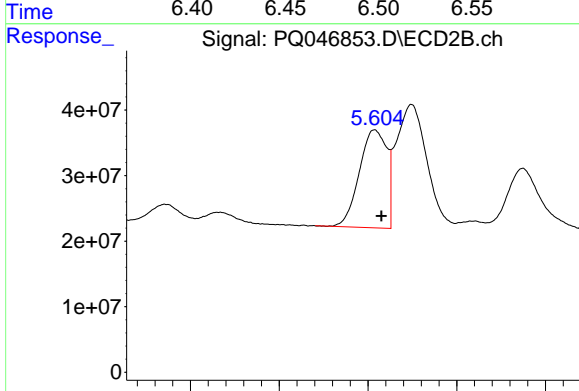
R.T.: 9.737 min  
Delta R.T.: -0.002 min  
Response: 357134488  
Conc: 48.76 ng/ml



#3 AR-1016-1

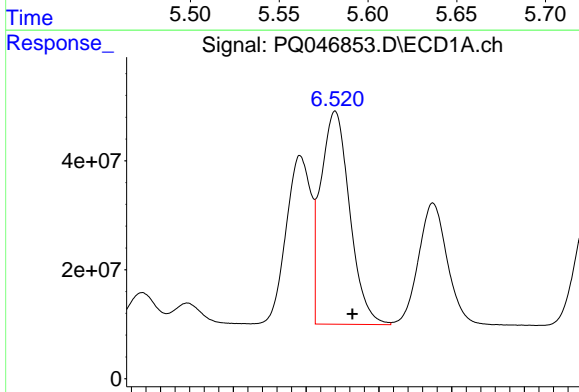
R.T.: 6.496 min  
 Delta R.T.: 0.001 min  
 Response: 365850789  
 Conc: 538.64 ng/ml

Instrument :  
 ECD\_Q  
 ClientSampleId :  
 AR1660CCC500



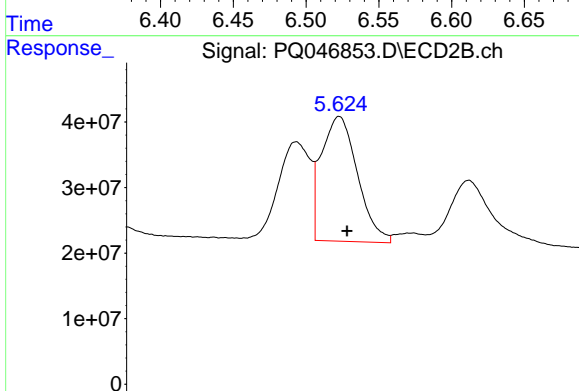
#3 AR-1016-1

R.T.: 5.604 min  
 Delta R.T.: -0.004 min  
 Response: 160099921  
 Conc: 492.09 ng/ml



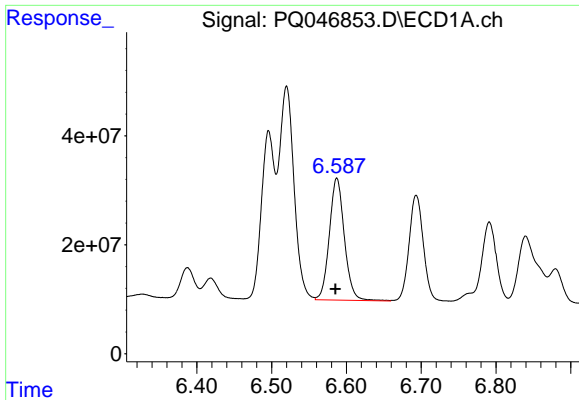
#4 AR-1016-2

R.T.: 6.520 min  
 Delta R.T.: -0.012 min  
 Response: 540882881  
 Conc: 542.32 ng/ml



#4 AR-1016-2

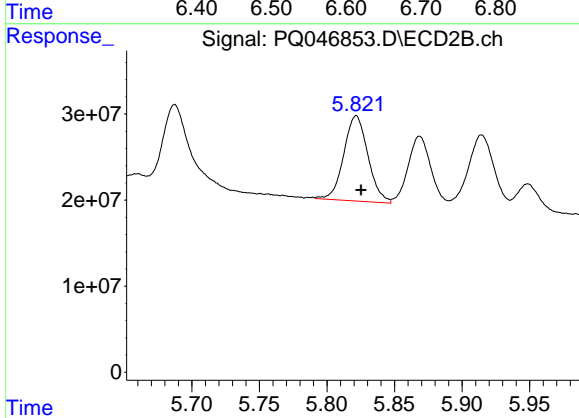
R.T.: 5.625 min  
 Delta R.T.: -0.004 min  
 Response: 231279404  
 Conc: 491.02 ng/ml



#5 AR-1016-3

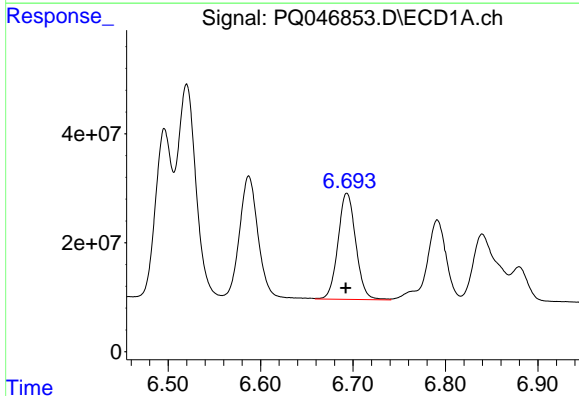
R.T.: 6.587 min  
 Delta R.T.: 0.002 min  
 Response: 312263853  
 Conc: 529.78 ng/ml

Instrument :  
 ECD\_Q  
 ClientSampleId :  
 AR1660CCC500



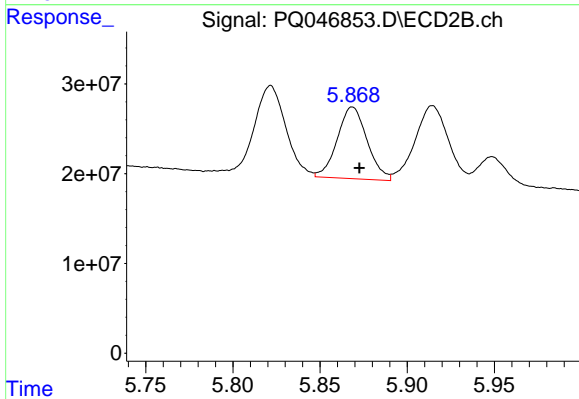
#5 AR-1016-3

R.T.: 5.822 min  
 Delta R.T.: -0.003 min  
 Response: 123528482  
 Conc: 513.34 ng/ml



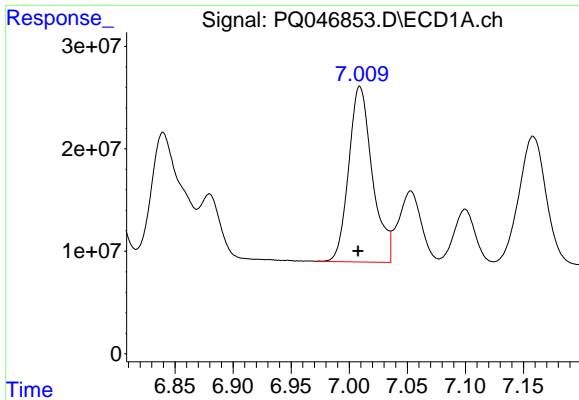
#6 AR-1016-4

R.T.: 6.693 min  
 Delta R.T.: 0.001 min  
 Response: 260073858  
 Conc: 523.62 ng/ml



#6 AR-1016-4

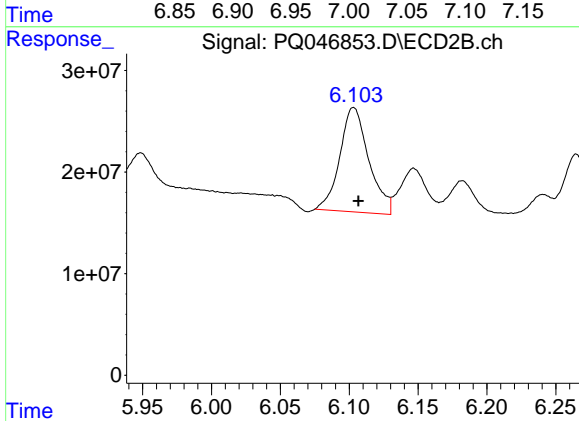
R.T.: 5.869 min  
 Delta R.T.: -0.004 min  
 Response: 95307441  
 Conc: 486.07 ng/ml



#7 AR-1016-5

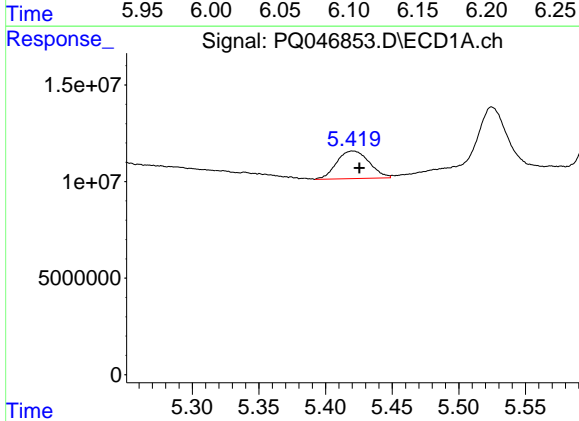
R.T.: 7.009 min  
 Delta R.T.: 0.001 min  
 Response: 242409773  
 Conc: 516.27 ng/ml

**Instrument :**  
 ECD\_Q  
**ClientSampleId :**  
 AR1660CCC500



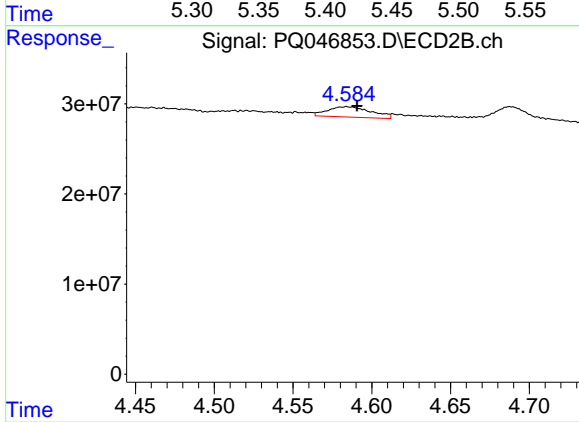
#7 AR-1016-5

R.T.: 6.103 min  
 Delta R.T.: -0.003 min  
 Response: 150949719  
 Conc: 581.73 ng/ml



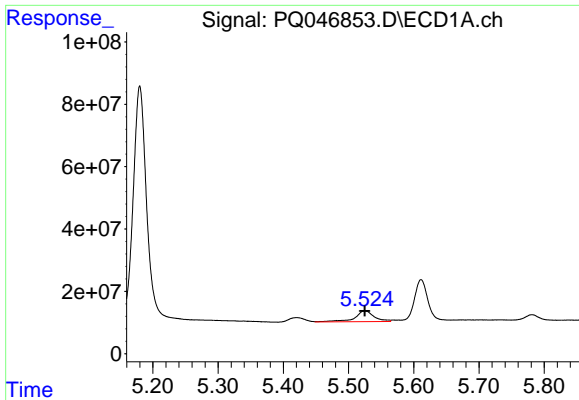
#8 AR-1221-1

R.T.: 5.420 min  
 Delta R.T.: -0.005 min  
 Response: 24298679  
 Conc: 140.18 ng/ml



#8 AR-1221-1

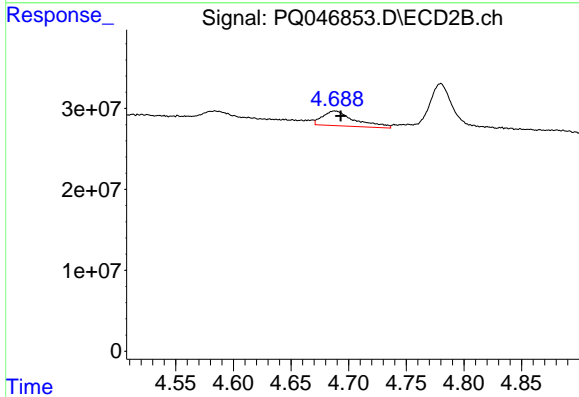
R.T.: 4.584 min  
 Delta R.T.: -0.007 min  
 Response: 22349149  
 Conc: 265.12 ng/ml



#9 AR-1221-2

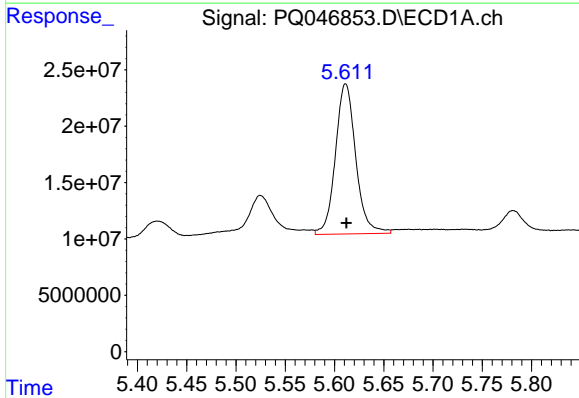
R.T.: 5.525 min  
 Delta R.T.: 0.000 min  
 Response: 71010772  
 Conc: 549.89 ng/ml

Instrument :  
 ECD\_Q  
 ClientSampleId :  
 AR1660CCC500



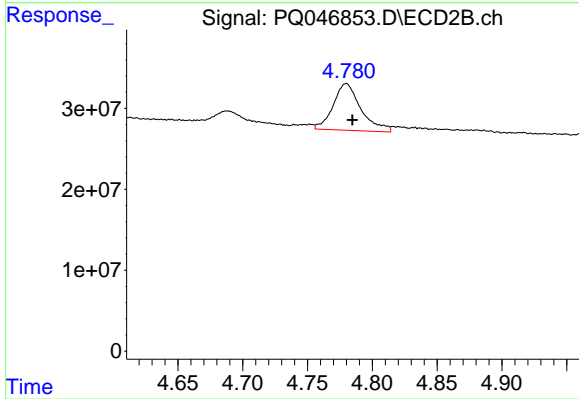
#9 AR-1221-2

R.T.: 4.688 min  
 Delta R.T.: -0.005 min  
 Response: 35590441  
 Conc: 572.67 ng/ml



#10 AR-1221-3

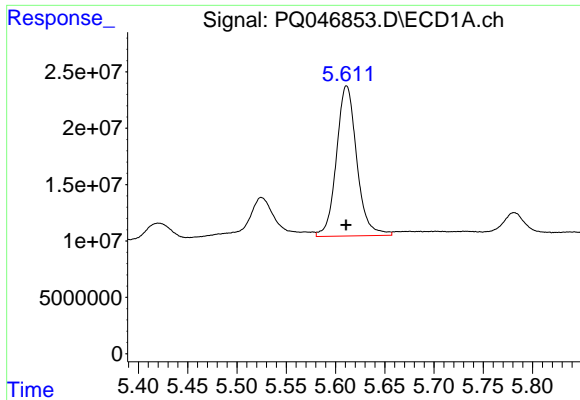
R.T.: 5.611 min  
 Delta R.T.: 0.000 min  
 Response: 191386279  
 Conc: 472.89 ng/ml



#10 AR-1221-3

R.T.: 4.780 min  
 Delta R.T.: -0.005 min  
 Response: 86120355  
 Conc: 438.37 ng/ml

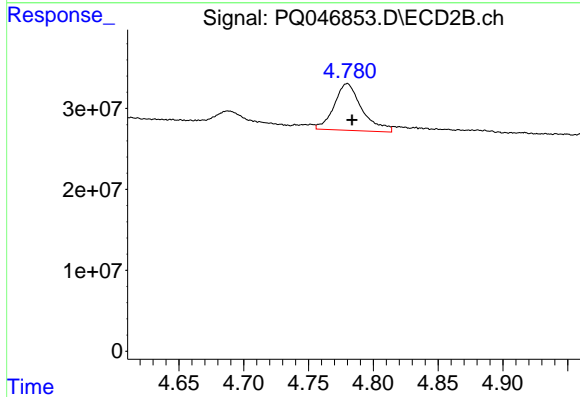




#11 AR-1232-1

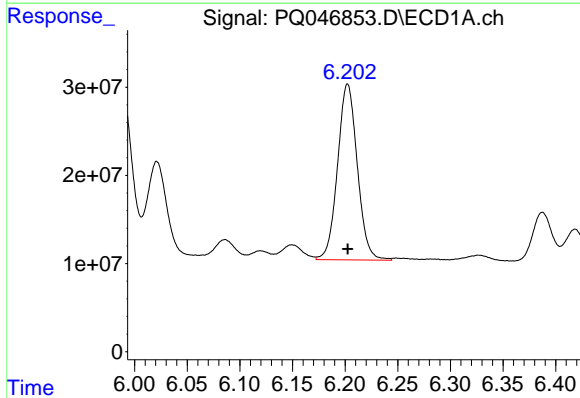
R.T.: 5.611 min  
 Delta R.T.: 0.000 min  
 Response: 191386279  
 Conc: 550.88 ng/ml

Instrument :  
 ECD\_Q  
 ClientSampled :  
 AR1660CCC500



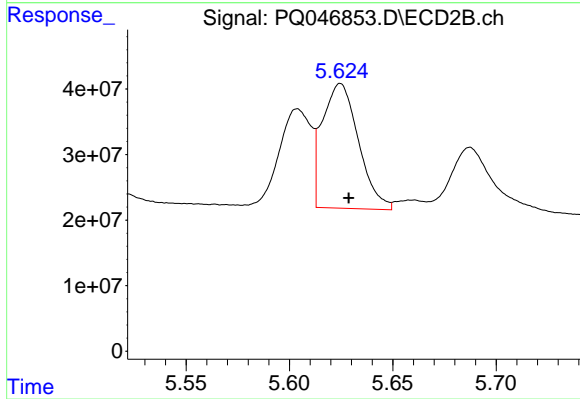
#11 AR-1232-1

R.T.: 4.780 min  
 Delta R.T.: -0.004 min  
 Response: 86120355  
 Conc: 517.64 ng/ml



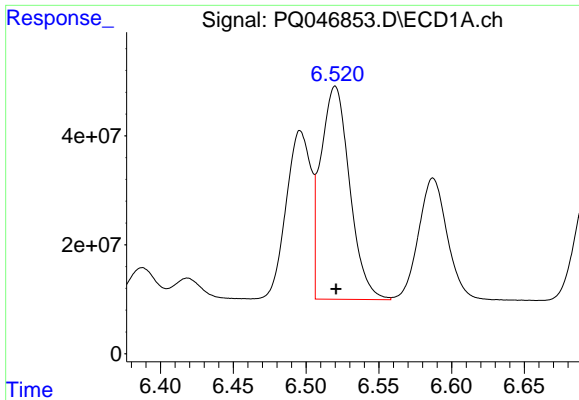
#12 AR-1232-2

R.T.: 6.202 min  
 Delta R.T.: 0.000 min  
 Response: 260575051  
 Conc: 1408.08 ng/ml



#12 AR-1232-2

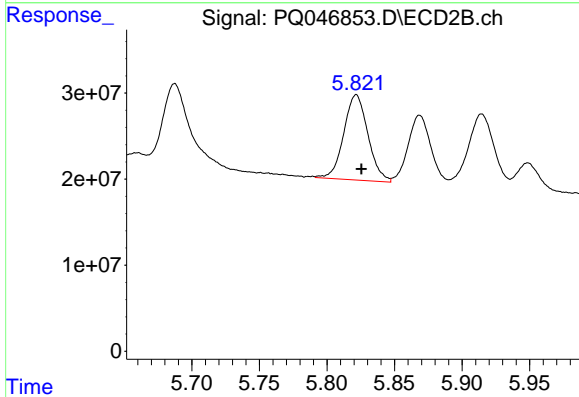
R.T.: 5.625 min  
 Delta R.T.: -0.004 min  
 Response: 231279404  
 Conc: 1355.39 ng/ml



#13 AR-1232-3

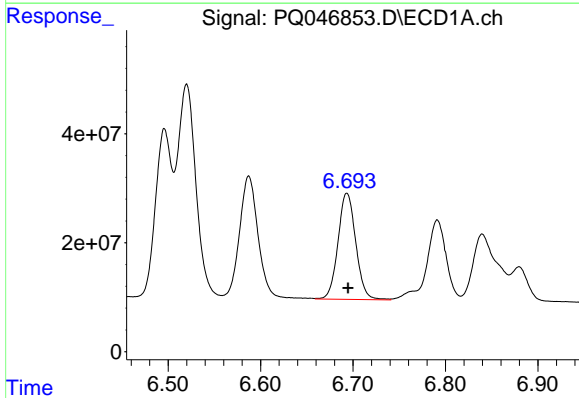
R.T.: 6.520 min  
 Delta R.T.: 0.000 min  
 Response: 540882881  
 Conc: 1455.64 ng/ml

Instrument :  
 ECD\_Q  
 ClientSampleId :  
 AR1660CCC500



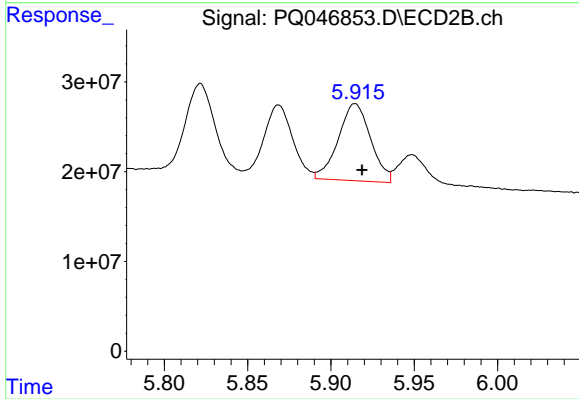
#13 AR-1232-3

R.T.: 5.822 min  
 Delta R.T.: -0.004 min  
 Response: 123528482  
 Conc: 1434.98 ng/ml



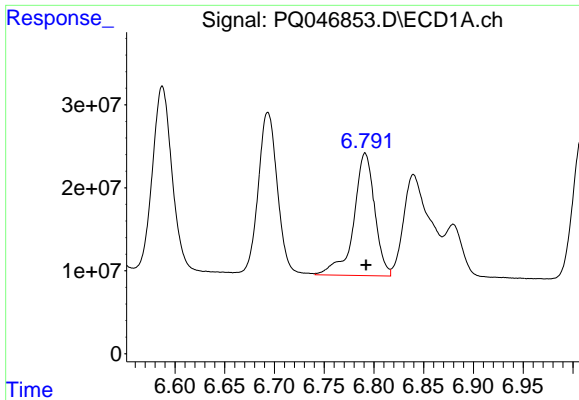
#14 AR-1232-4

R.T.: 6.693 min  
 Delta R.T.: -0.001 min  
 Response: 260073858  
 Conc: 1403.02 ng/ml



#14 AR-1232-4

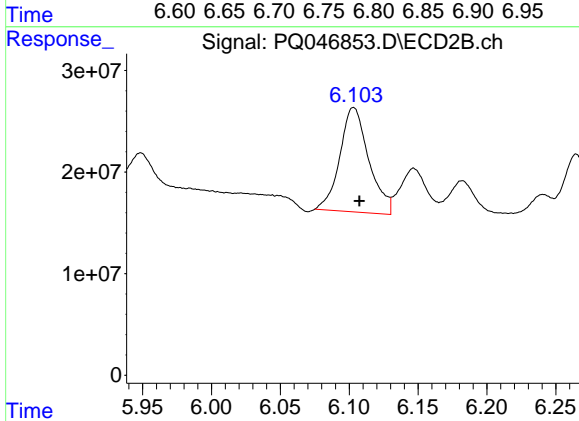
R.T.: 5.914 min  
 Delta R.T.: -0.004 min  
 Response: 116033457  
 Conc: 1511.12 ng/ml



#15 AR-1232-5

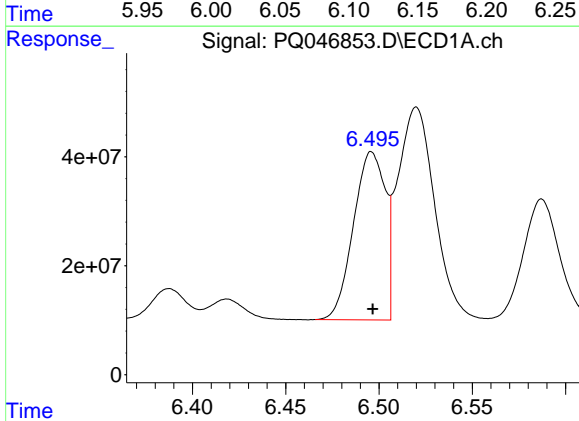
R.T.: 6.791 min  
 Delta R.T.: 0.000 min  
 Response: 216759796  
 Conc: 1588.12 ng/ml

**Instrument :**  
 ECD\_Q  
**ClientSampled :**  
 AR1660CCC500



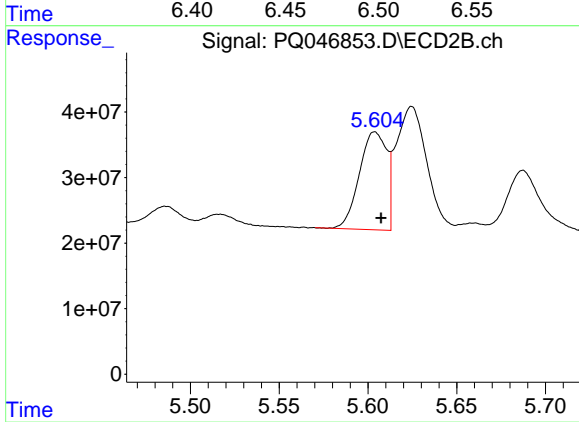
#15 AR-1232-5

R.T.: 6.103 min  
 Delta R.T.: -0.004 min  
 Response: 150949719  
 Conc: 1724.73 ng/ml



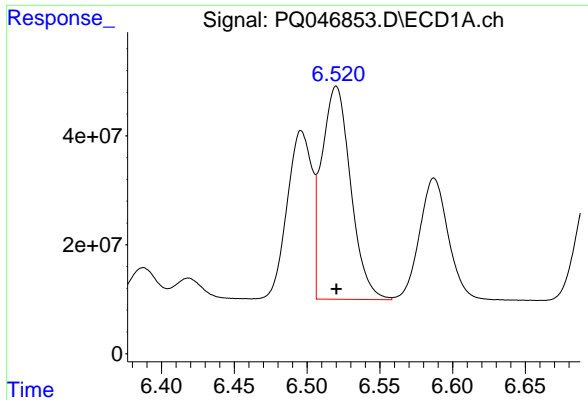
#16 AR-1242-1

R.T.: 6.496 min  
 Delta R.T.: 0.000 min  
 Response: 365850789  
 Conc: 769.66 ng/ml



#16 AR-1242-1

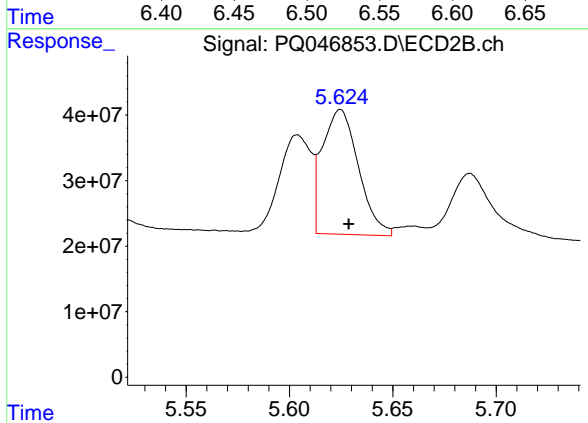
R.T.: 5.604 min  
 Delta R.T.: -0.004 min  
 Response: 160099921  
 Conc: 727.11 ng/ml



#17 AR-1242-2

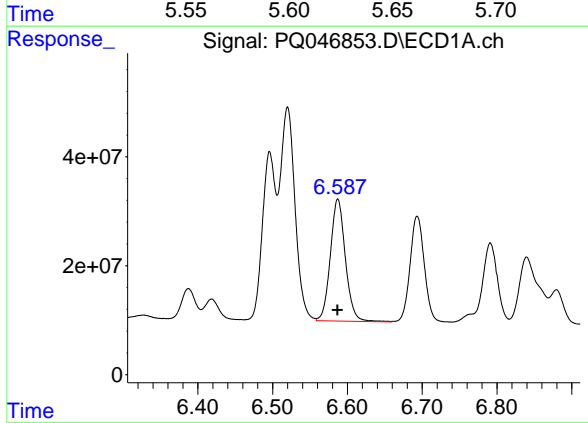
R.T.: 6.520 min  
 Delta R.T.: 0.000 min  
 Response: 540882881  
 Conc: 784.36 ng/ml

Instrument :  
 ECD\_Q  
 ClientSampleId :  
 AR1660CCC500



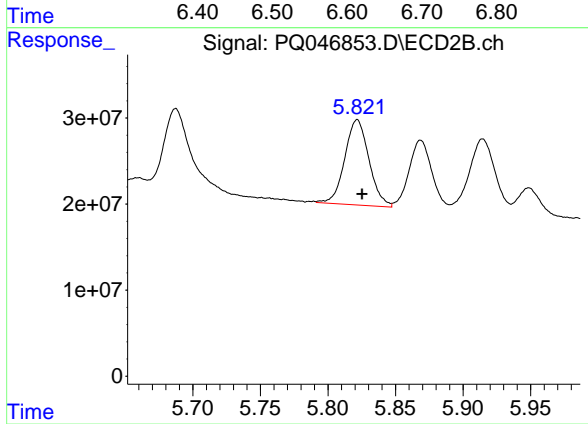
#17 AR-1242-2

R.T.: 5.625 min  
 Delta R.T.: -0.004 min  
 Response: 231279404  
 Conc: 709.21 ng/ml



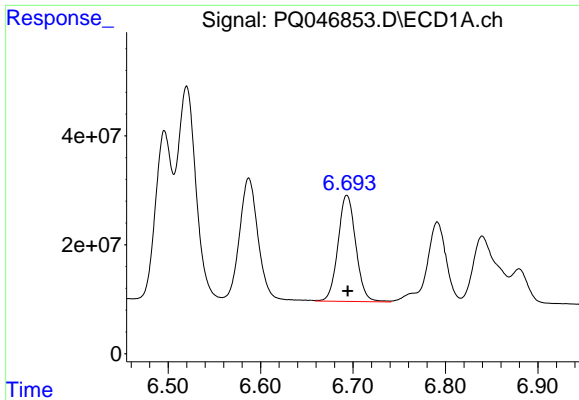
#18 AR-1242-3

R.T.: 6.587 min  
 Delta R.T.: 0.000 min  
 Response: 312263853  
 Conc: 755.02 ng/ml



#18 AR-1242-3

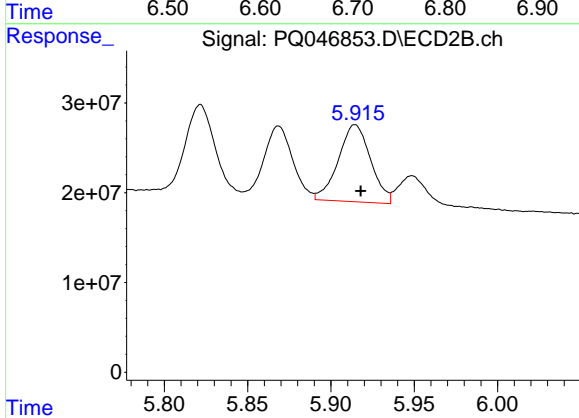
R.T.: 5.822 min  
 Delta R.T.: -0.004 min  
 Response: 123528482  
 Conc: 751.05 ng/ml



#19 AR-1242-4

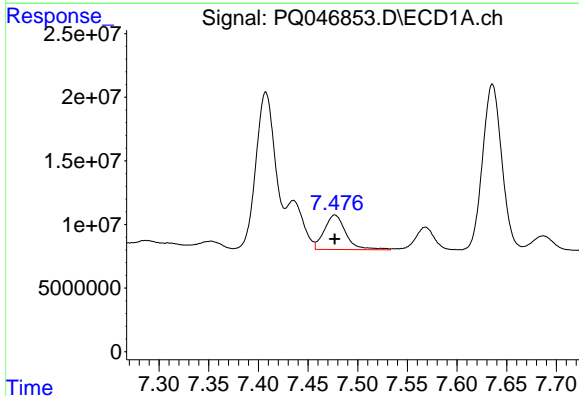
R.T.: 6.693 min  
 Delta R.T.: 0.000 min  
 Response: 260073858  
 Conc: 748.81 ng/ml

**Instrument :**  
 ECD\_Q  
**ClientSampled :**  
 AR1660CCC500



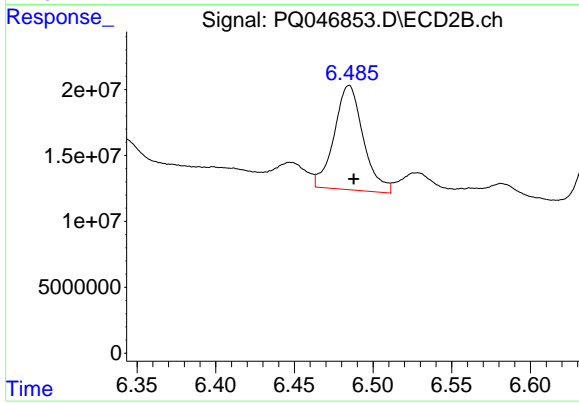
#19 AR-1242-4

R.T.: 5.914 min  
 Delta R.T.: -0.003 min  
 Response: 116033457  
 Conc: 714.10 ng/ml



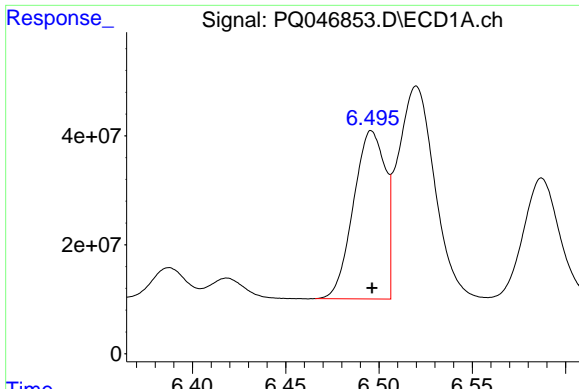
#20 AR-1242-5

R.T.: 7.477 min  
 Delta R.T.: 0.000 min  
 Response: 41037650  
 Conc: 115.28 ng/ml



#20 AR-1242-5

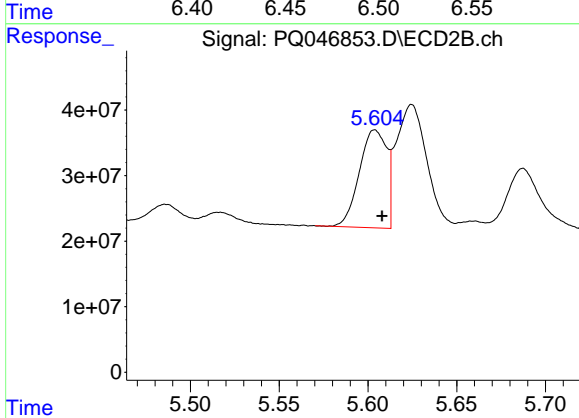
R.T.: 6.485 min  
 Delta R.T.: -0.003 min  
 Response: 101690885  
 Conc: 486.13 ng/ml



#21 AR-1248-1

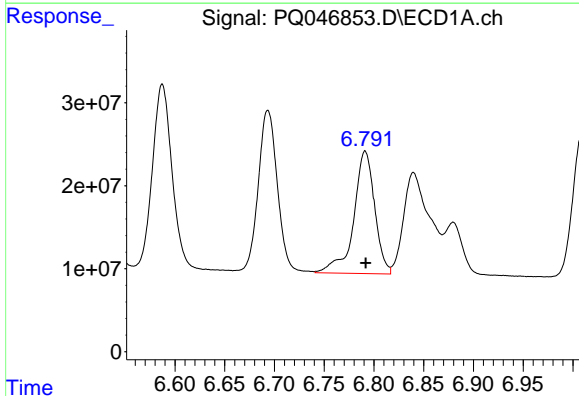
R.T.: 6.496 min  
 Delta R.T.: 0.000 min  
 Response: 365850789  
 Conc: 994.42 ng/ml

Instrument :  
 ECD\_Q  
 ClientSampleId :  
 AR1660CCC500



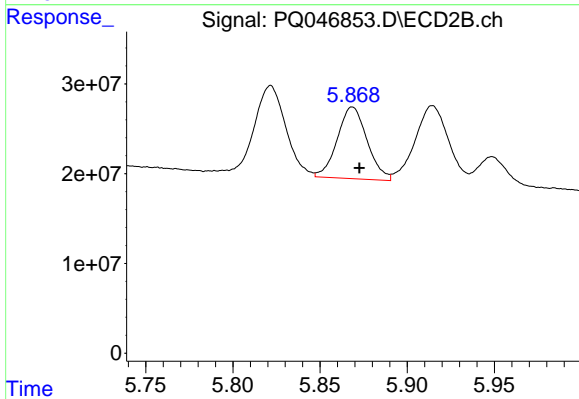
#21 AR-1248-1

R.T.: 5.604 min  
 Delta R.T.: -0.004 min  
 Response: 160099921  
 Conc: 923.73 ng/ml



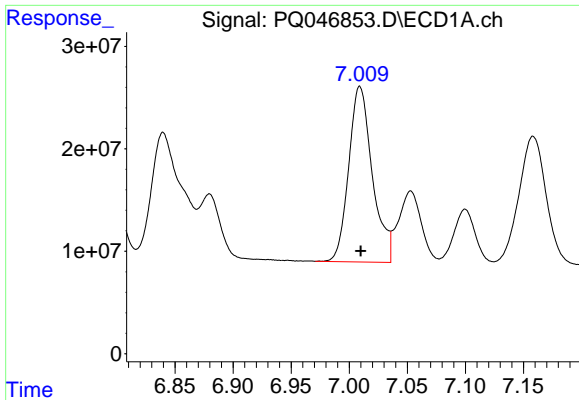
#22 AR-1248-2

R.T.: 6.791 min  
 Delta R.T.: 0.000 min  
 Response: 216759796  
 Conc: 433.84 ng/ml



#22 AR-1248-2

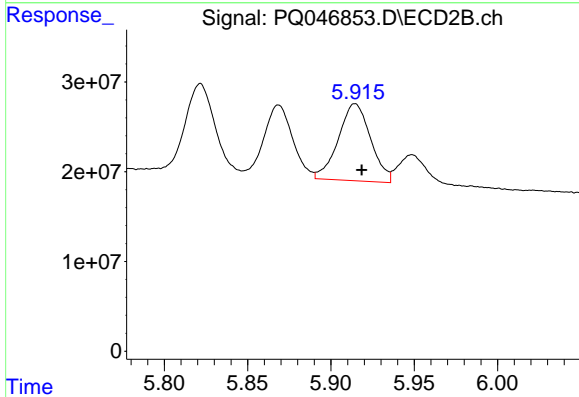
R.T.: 5.869 min  
 Delta R.T.: -0.004 min  
 Response: 95307441  
 Conc: 415.27 ng/ml



#23 AR-1248-3

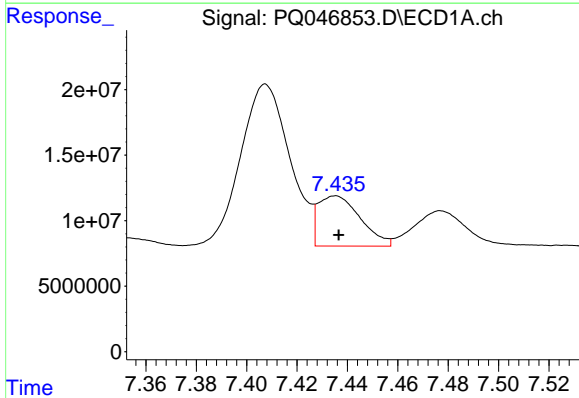
R.T.: 7.009 min  
 Delta R.T.: 0.000 min  
 Response: 242409773  
 Conc: 438.26 ng/ml

Instrument :  
 ECD\_Q  
 ClientSampled :  
 AR1660CCC500



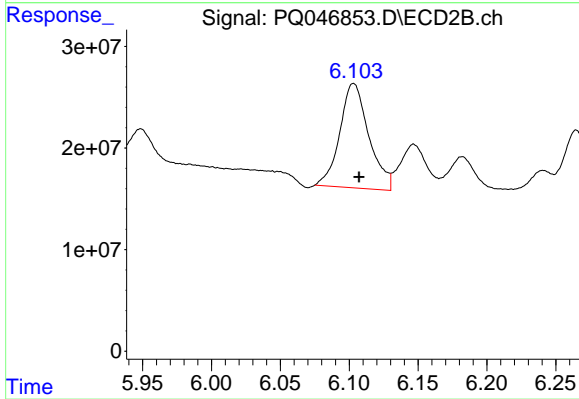
#23 AR-1248-3

R.T.: 5.914 min  
 Delta R.T.: -0.004 min  
 Response: 116033457  
 Conc: 482.41 ng/ml



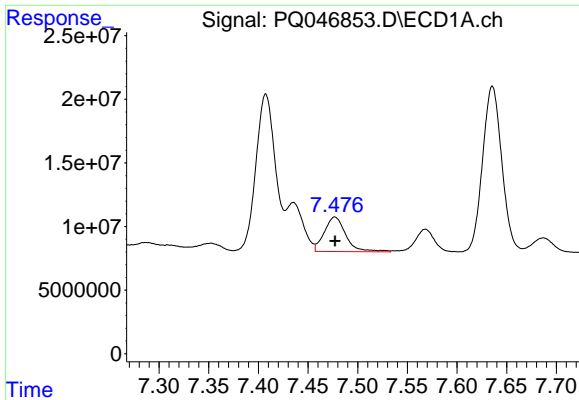
#24 AR-1248-4

R.T.: 7.435 min  
 Delta R.T.: -0.001 min  
 Response: 44559726  
 Conc: 70.06 ng/ml



#24 AR-1248-4

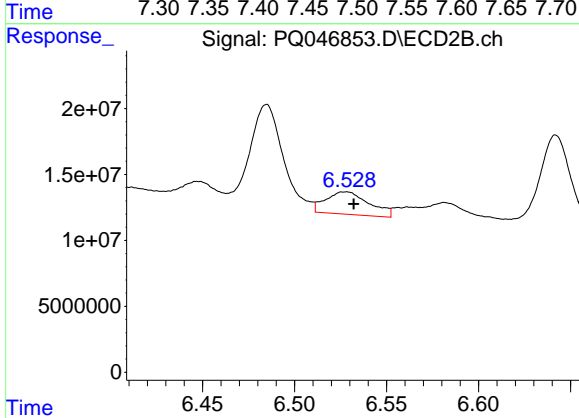
R.T.: 6.103 min  
 Delta R.T.: -0.004 min  
 Response: 150949719  
 Conc: 509.05 ng/ml



#25 AR-1248-5

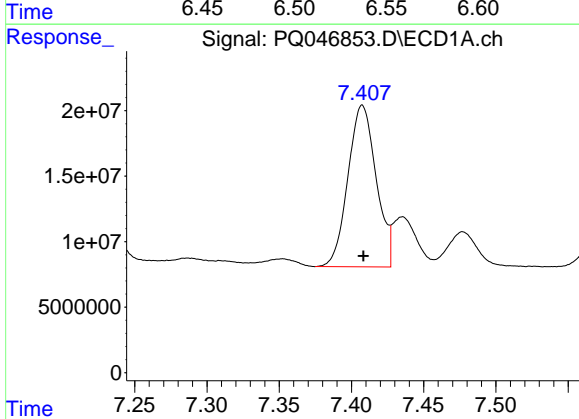
R.T.: 7.477 min  
 Delta R.T.: 0.000 min  
 Response: 41037650  
 Conc: 67.84 ng/ml

Instrument :  
 ECD\_Q  
 ClientSampleId :  
 AR1660CCC500



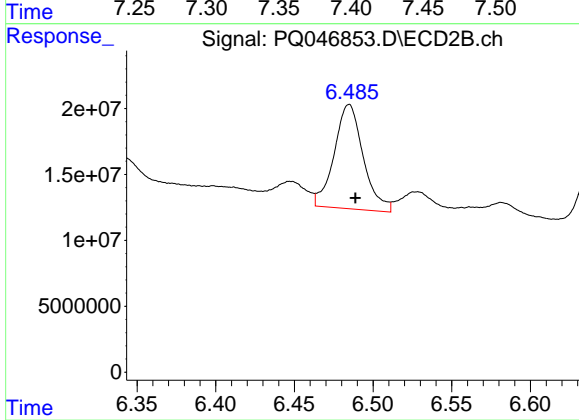
#25 AR-1248-5

R.T.: 6.528 min  
 Delta R.T.: -0.004 min  
 Response: 28076189  
 Conc: 95.85 ng/ml



#26 AR-1254-1

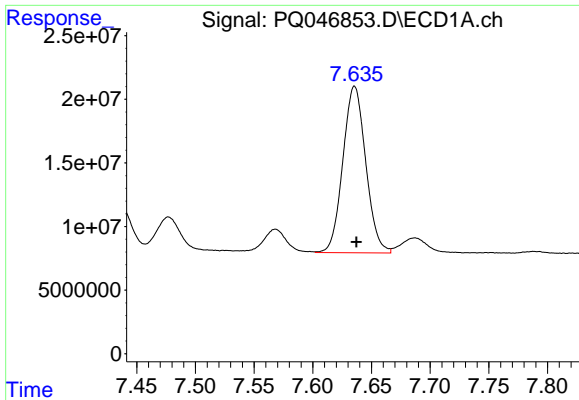
R.T.: 7.407 min  
 Delta R.T.: 0.000 min  
 Response: 167412590  
 Conc: 315.91 ng/ml



#26 AR-1254-1

R.T.: 6.485 min  
 Delta R.T.: -0.004 min  
 Response: 101690885  
 Conc: 266.66 ng/ml

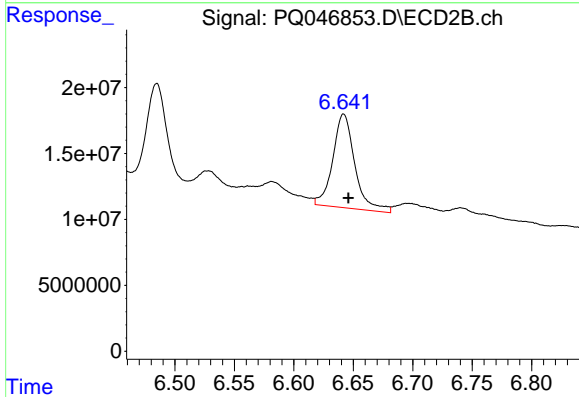




#27 AR-1254-2

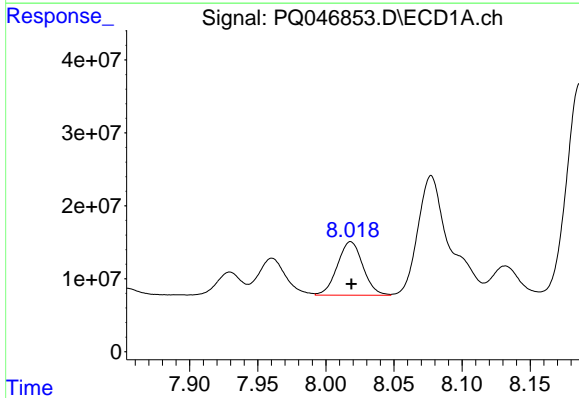
R.T.: 7.636 min  
 Delta R.T.: -0.001 min  
 Response: 177715675  
 Conc: 224.72 ng/ml

Instrument :  
 ECD\_Q  
 ClientSampleId :  
 AR1660CCC500



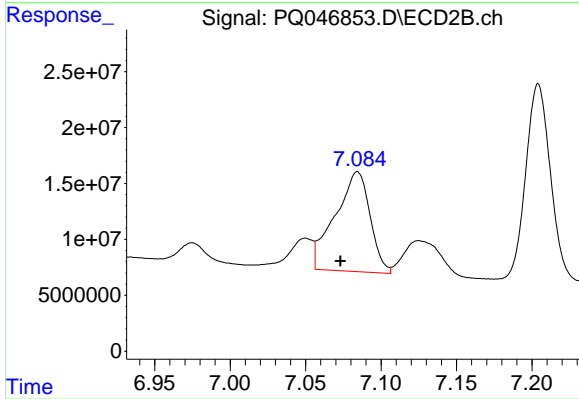
#27 AR-1254-2

R.T.: 6.642 min  
 Delta R.T.: -0.004 min  
 Response: 91871038  
 Conc: 280.90 ng/ml



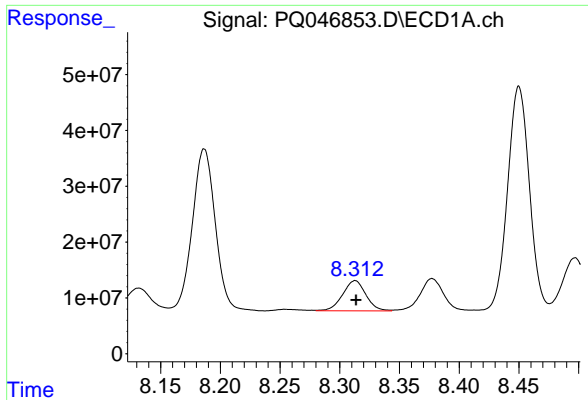
#28 AR-1254-3

R.T.: 8.018 min  
 Delta R.T.: 0.000 min  
 Response: 95875774  
 Conc: 129.16 ng/ml



#28 AR-1254-3

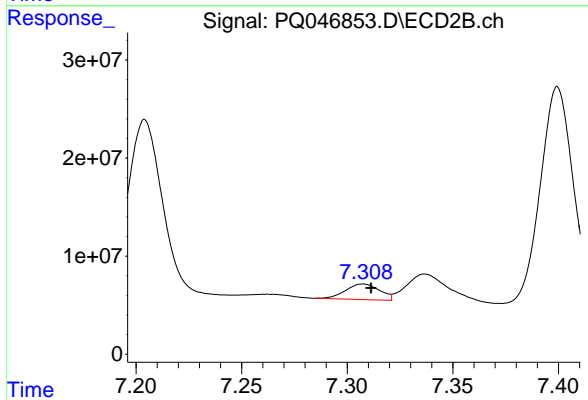
R.T.: 7.084 min  
 Delta R.T.: 0.011 min  
 Response: 144046093  
 Conc: 265.94 ng/ml



#29 AR-1254-4

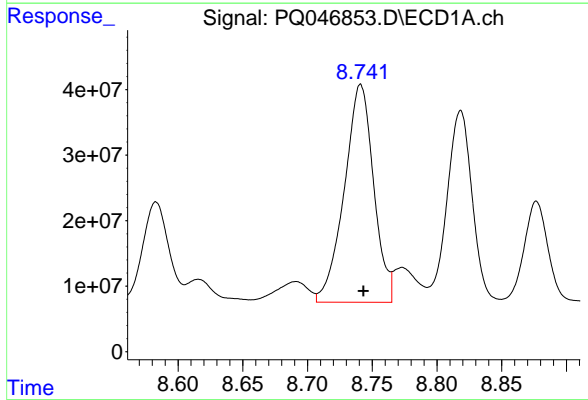
R.T.: 8.313 min  
 Delta R.T.: 0.000 min  
 Response: 73699578  
 Conc: 127.35 ng/ml

Instrument :  
 ECD\_Q  
 ClientSampleId :  
 AR1660CCC500



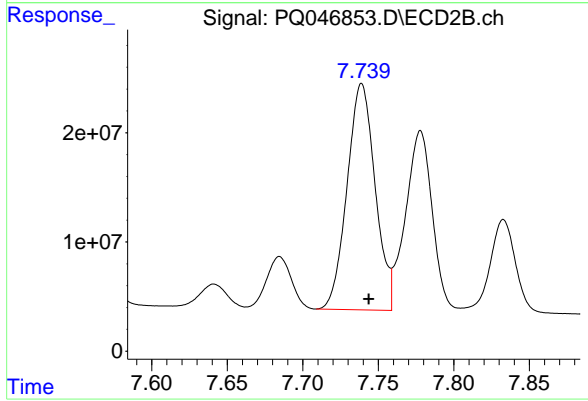
#29 AR-1254-4

R.T.: 7.308 min  
 Delta R.T.: -0.004 min  
 Response: 17806570  
 Conc: 54.19 ng/ml



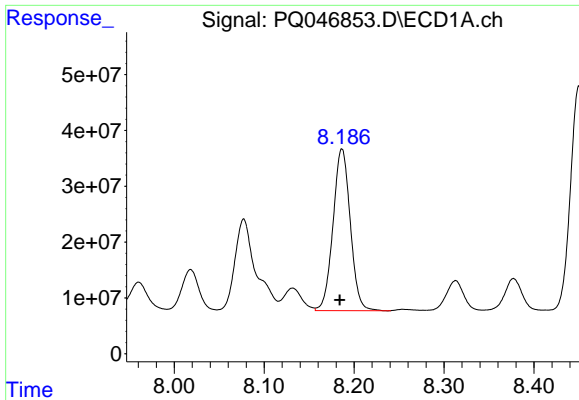
#30 AR-1254-5

R.T.: 8.741 min  
 Delta R.T.: -0.002 min  
 Response: 524989227  
 Conc: 850.60 ng/ml



#30 AR-1254-5

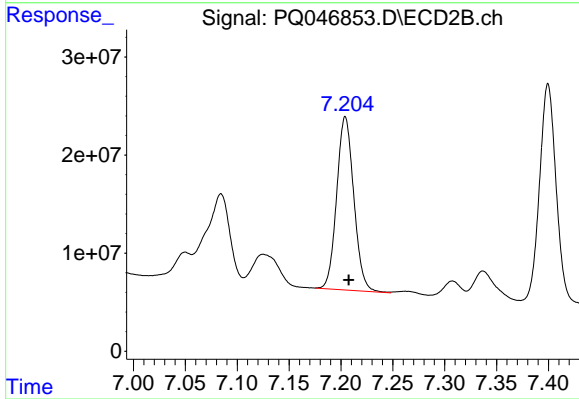
R.T.: 7.739 min  
 Delta R.T.: -0.005 min  
 Response: 267947535  
 Conc: 579.49 ng/ml



#31 AR-1260-1

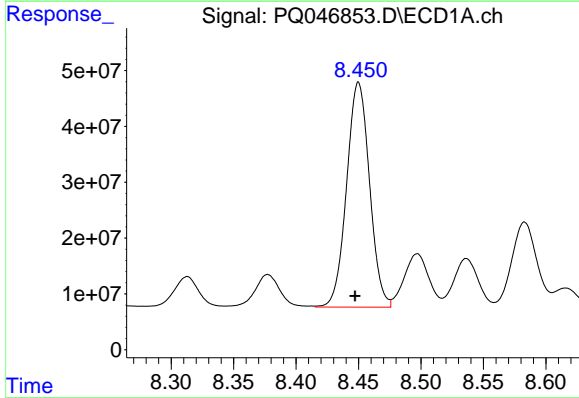
R.T.: 8.187 min  
 Delta R.T.: 0.003 min  
 Response: 386679745  
 Conc: 550.15 ng/ml

Instrument :  
 ECD\_Q  
 ClientSampleId :  
 AR1660CCC500



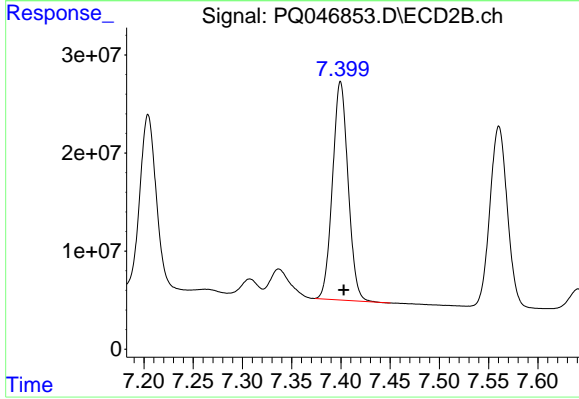
#31 AR-1260-1

R.T.: 7.204 min  
 Delta R.T.: -0.003 min  
 Response: 202987311  
 Conc: 423.41 ng/ml



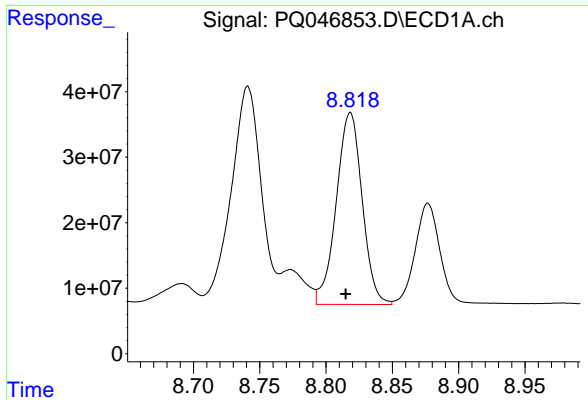
#32 AR-1260-2

R.T.: 8.450 min  
 Delta R.T.: 0.003 min  
 Response: 514275464  
 Conc: 570.79 ng/ml



#32 AR-1260-2

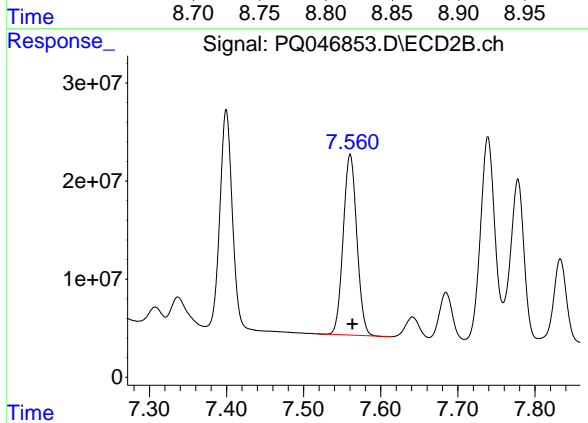
R.T.: 7.400 min  
 Delta R.T.: -0.003 min  
 Response: 244522733  
 Conc: 424.03 ng/ml



#33 AR-1260-3

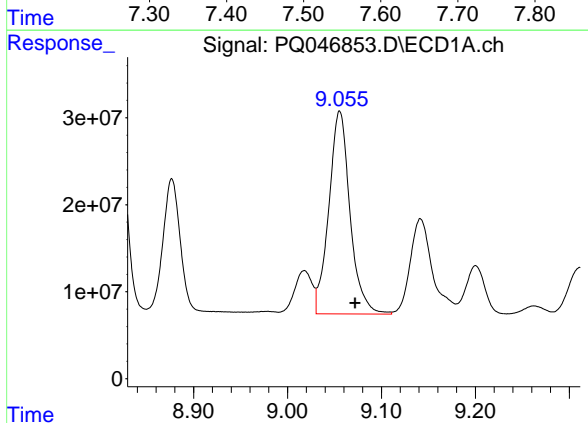
R.T.: 8.818 min  
 Delta R.T.: 0.003 min  
 Response: 398059347  
 Conc: 578.68 ng/ml

Instrument :  
 ECD\_Q  
 ClientSampleId :  
 AR1660CCC500



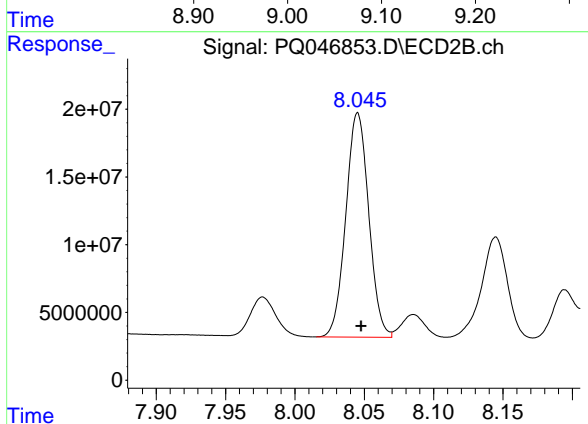
#33 AR-1260-3

R.T.: 7.560 min  
 Delta R.T.: -0.003 min  
 Response: 226330708  
 Conc: 425.39 ng/ml



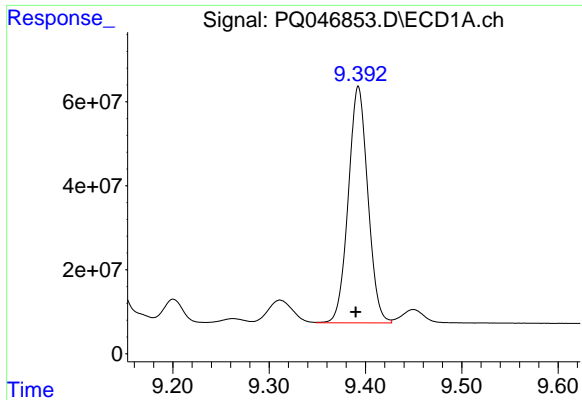
#34 AR-1260-4

R.T.: 9.056 min  
 Delta R.T.: -0.016 min  
 Response: 365984699  
 Conc: 573.55 ng/ml



#34 AR-1260-4

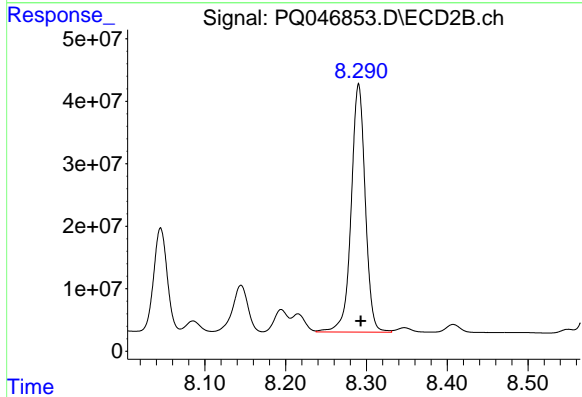
R.T.: 8.045 min  
 Delta R.T.: -0.002 min  
 Response: 190525318  
 Conc: 458.95 ng/ml



#35 AR-1260-5

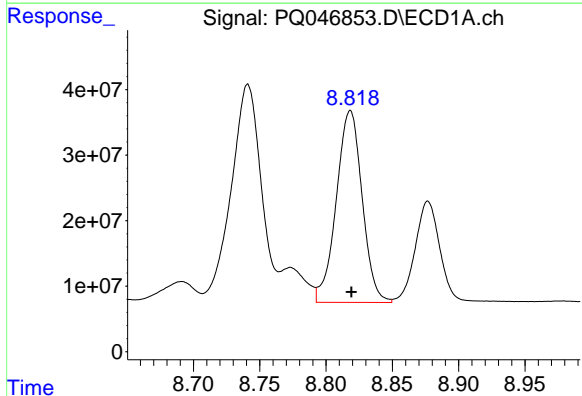
R.T.: 9.393 min  
Delta R.T.: 0.003 min  
Response: 791829113  
Conc: 603.28 ng/ml

Instrument :  
ECD\_Q  
ClientSampleId :  
AR1660CCC500



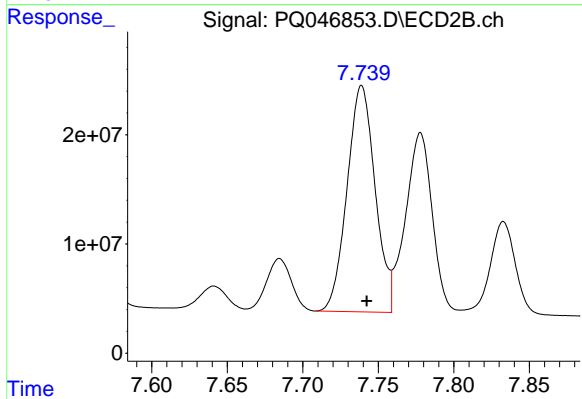
#35 AR-1260-5

R.T.: 8.290 min  
Delta R.T.: -0.003 min  
Response: 480599750  
Conc: 473.34 ng/ml



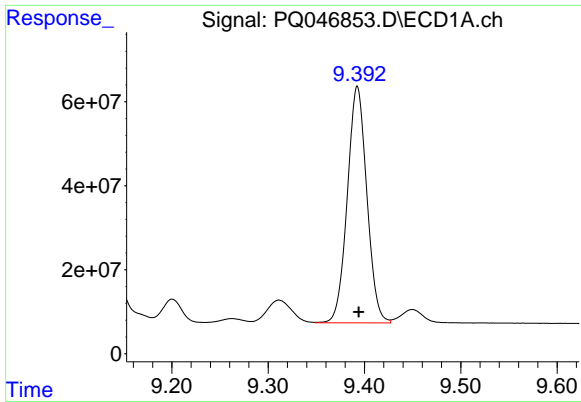
#36 AR-1262-1

R.T.: 8.818 min  
Delta R.T.: 0.000 min  
Response: 398059347  
Conc: 540.86 ng/ml



#36 AR-1262-1

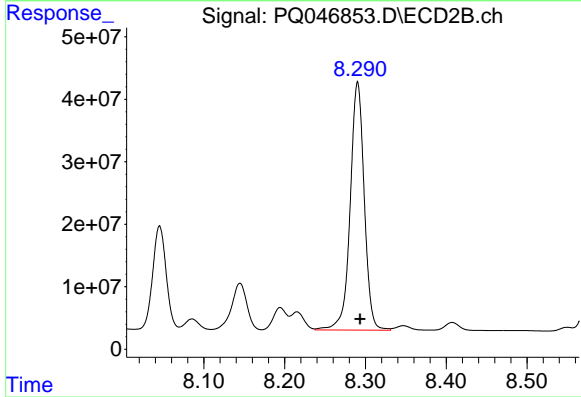
R.T.: 7.739 min  
Delta R.T.: -0.003 min  
Response: 267947535  
Conc: 1107.83 ng/ml



#37 AR-1262-2

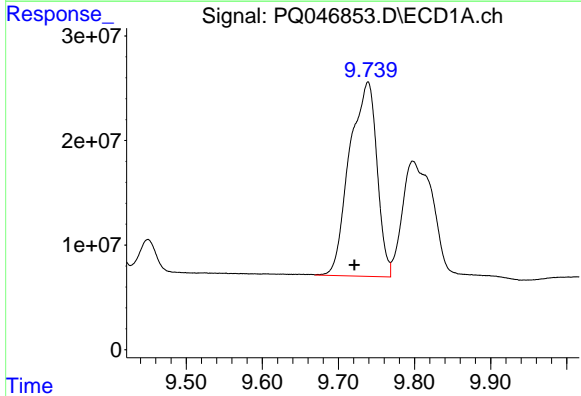
R.T.: 9.393 min  
 Delta R.T.: -0.002 min  
 Response: 791829113  
 Conc: 724.97 ng/ml

Instrument :  
 ECD\_Q  
 ClientSampleId :  
 AR1660CCC500



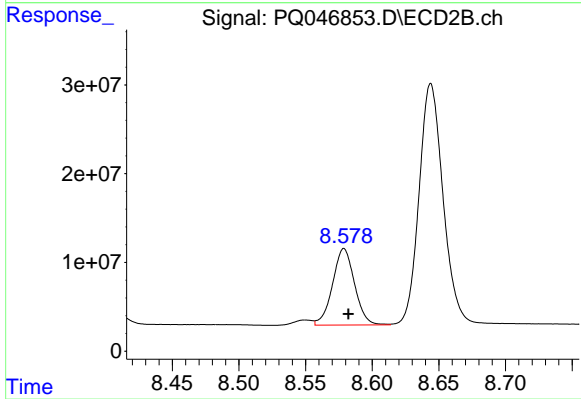
#37 AR-1262-2

R.T.: 8.290 min  
 Delta R.T.: -0.003 min  
 Response: 480599750  
 Conc: 571.24 ng/ml



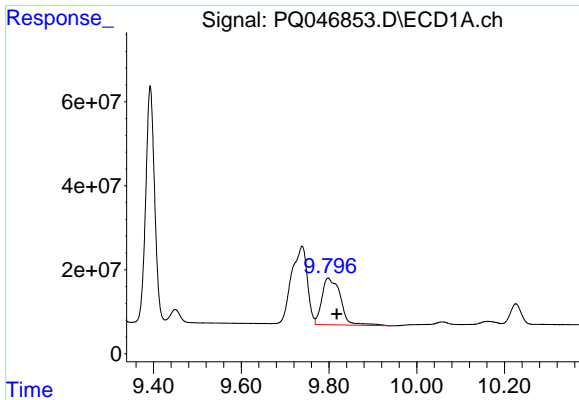
#38 AR-1262-3

R.T.: 9.739 min  
 Delta R.T.: 0.018 min  
 Response: 463728704  
 Conc: 651.63 ng/ml



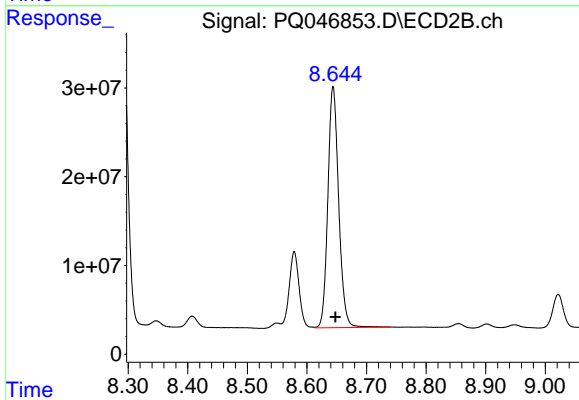
#38 AR-1262-3

R.T.: 8.579 min  
 Delta R.T.: -0.003 min  
 Response: 99068245  
 Conc: 323.20 ng/ml

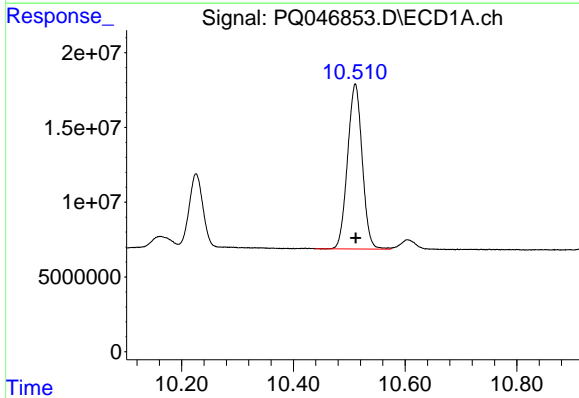


#39 AR-1262-4  
 R.T.: 9.798 min  
 Delta R.T.: -0.020 min  
 Response: 328031008  
 Conc: 585.86 ng/ml

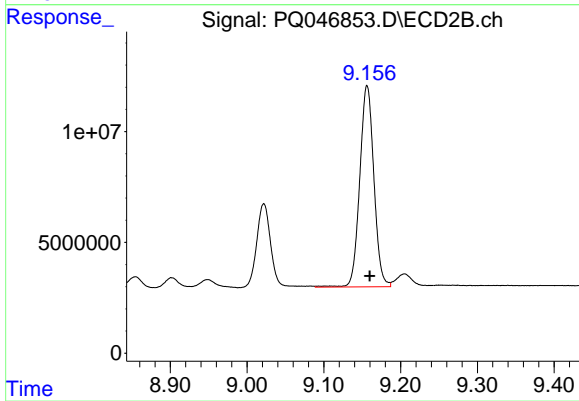
Instrument :  
 ECD\_Q  
 ClientSampleId :  
 AR1660CCC500



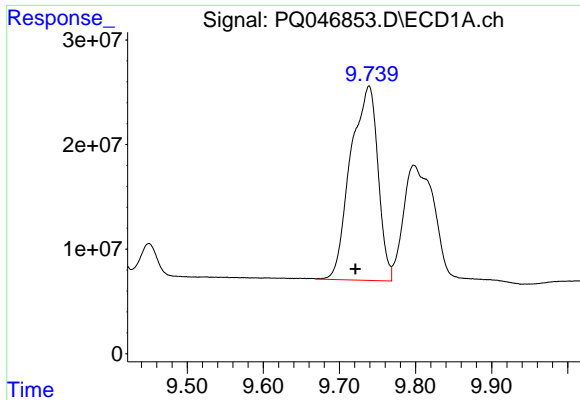
#39 AR-1262-4  
 R.T.: 8.644 min  
 Delta R.T.: -0.004 min  
 Response: 342239566  
 Conc: 583.98 ng/ml



#40 AR-1262-5  
 R.T.: 10.511 min  
 Delta R.T.: 0.000 min  
 Response: 201046856  
 Conc: 561.99 ng/ml



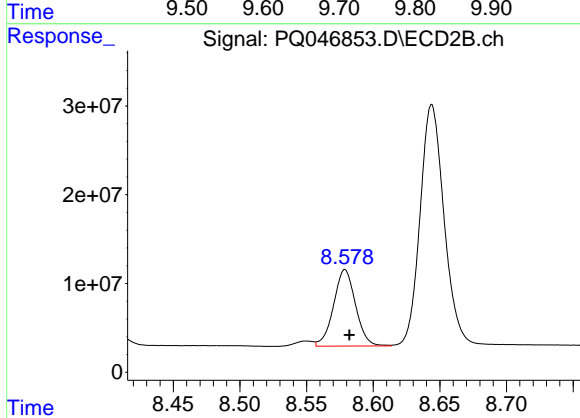
#40 AR-1262-5  
 R.T.: 9.156 min  
 Delta R.T.: -0.004 min  
 Response: 116250665  
 Conc: 469.42 ng/ml



#41 AR-1268-1

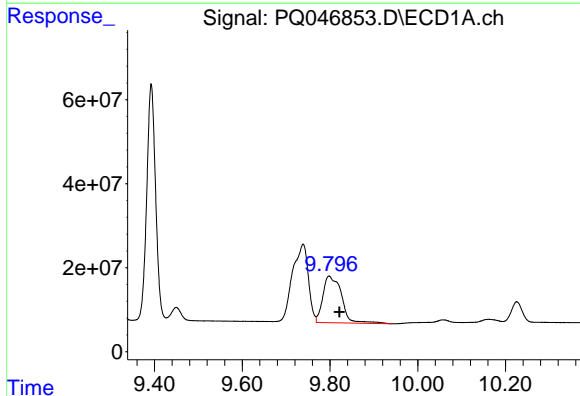
R.T.: 9.739 min  
 Delta R.T.: 0.018 min  
 Response: 463728704  
 Conc: 1188.46 ng/ml

Instrument :  
 ECD\_Q  
 ClientSampleId :  
 AR1660CCC500



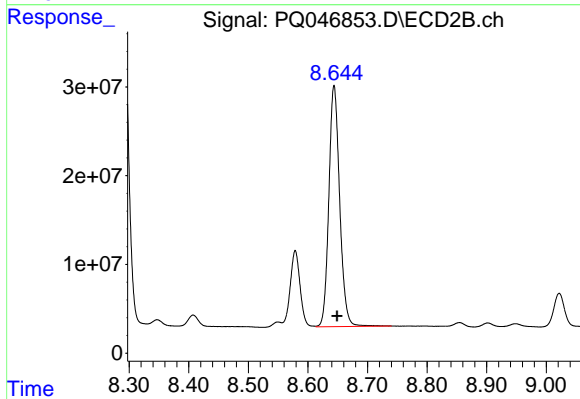
#41 AR-1268-1

R.T.: 8.579 min  
 Delta R.T.: -0.003 min  
 Response: 99068245  
 Conc: 362.21 ng/ml



#42 AR-1268-2

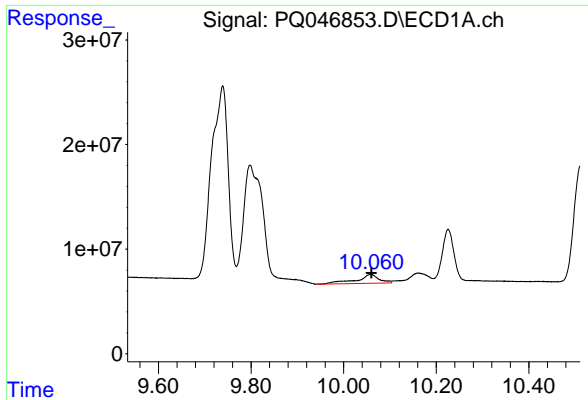
R.T.: 9.798 min  
 Delta R.T.: -0.023 min  
 Response: 328031008  
 Conc: 921.01 ng/ml



#42 AR-1268-2

R.T.: 8.644 min  
 Delta R.T.: -0.005 min  
 Response: 342239566  
 Conc: 1358.92 ng/ml

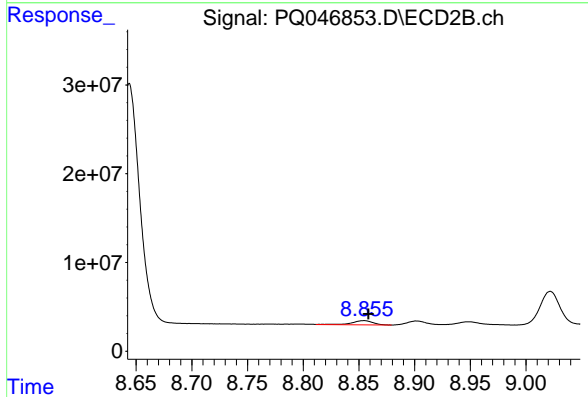




#43 AR-1268-3

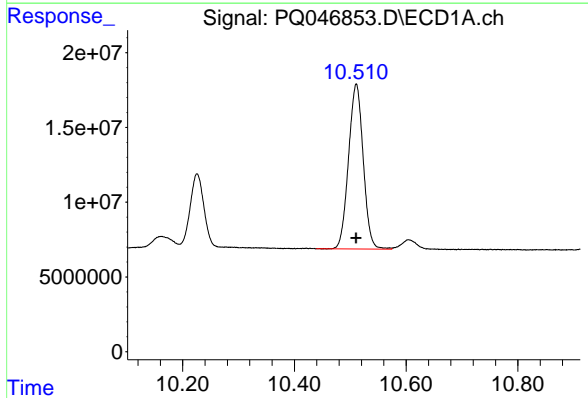
R.T.: 10.059 min  
 Delta R.T.: -0.001 min  
 Response: 28992336  
 Conc: 98.15 ng/ml

Instrument :  
 ECD\_Q  
 ClientSampleId :  
 AR1660CCC500



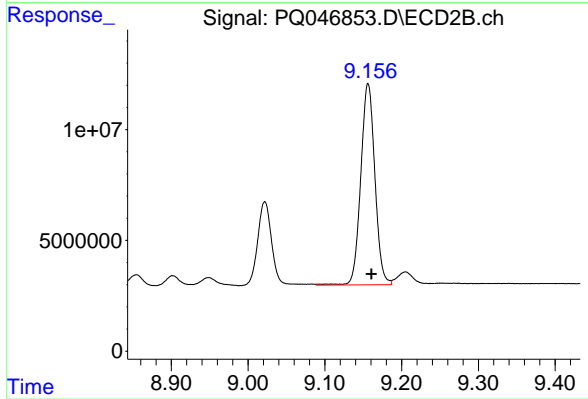
#43 AR-1268-3

R.T.: 8.855 min  
 Delta R.T.: -0.004 min  
 Response: 6163496  
 Conc: 29.98 ng/ml



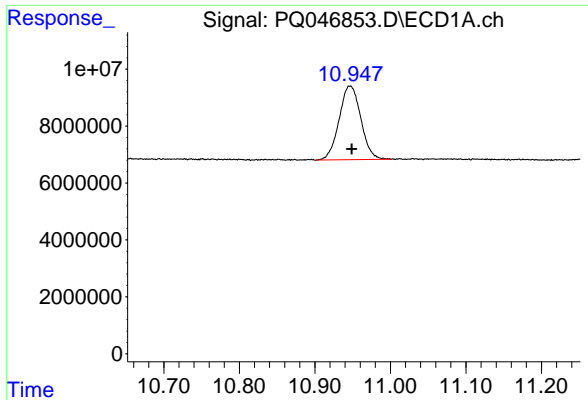
#44 AR-1268-4

R.T.: 10.511 min  
 Delta R.T.: 0.000 min  
 Response: 201046856  
 Conc: 1678.96 ng/ml



#44 AR-1268-4

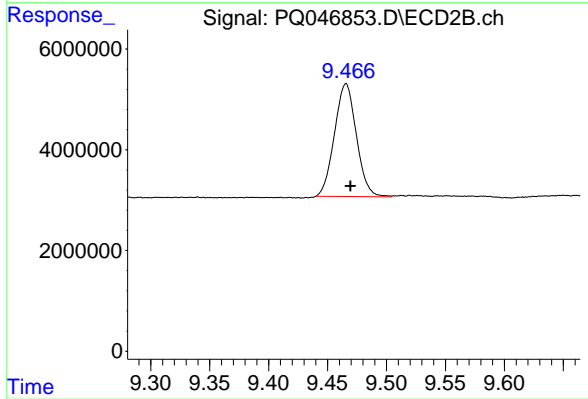
R.T.: 9.156 min  
 Delta R.T.: -0.004 min  
 Response: 116250665  
 Conc: 1443.19 ng/ml



#45 AR-1268-5

R.T.: 10.947 min  
Delta R.T.: -0.002 min  
Response: 51690118  
Conc: 63.97 ng/ml

Instrument :  
ECD\_Q  
ClientSampleId :  
AR1660CCC500



#45 AR-1268-5

R.T.: 9.466 min  
Delta R.T.: -0.004 min  
Response: 29001219  
Conc: 47.32 ng/ml