

Data Path : Z:\pestpcbsrv\HPCHEM1\ECD_Q\Data\PQ031020\
 Data File : PQ046854.D
 Signal(s) : Signal #1: ECD1A.ch Signal #2: ECD2B.ch
 Acq On : 10 Mar 2020 19:08
 Operator : AJ\MA
 Sample : L1764-02
 Misc :
 ALS Vial : 31 Sample Multiplier: 1

Instrument :
 ECD_Q
 ClientSampled :
 S5-02-B

Integration File signal 1: autoint1.e
 Integration File signal 2: autoint2.e
 Quant Time: Mar 11 04:04:20 2020
 Quant Method : Z:\pestpcbsrv\HPCHEM1\ECD_Q\Method\PQ030920.M
 Quant Title : GC EXTRACTABLES
 QLast Update : Tue Mar 10 04:56:12 2020
 Response via : Initial Calibration
 Integrator: ChemStation

Volume Inj. : 2 µl
 Signal #1 Phase : ZB-MR1 Signal #2 Phase: ZB-MR2
 Signal #1 Info : 30Mx0.32mmx 0.50µ Signal #2 Info : 30M x 0.32mm x 0.25µm

Compound	RT#1	RT#2	Resp#1	Resp#2	ng/ml	ng/ml
System Monitoring Compounds						
1) SA Tetrachlo...	5.184	4.321	463.4E6	179.1E6	24.797	19.852
2) SA Decachlor...	11.315	9.740	220.0E6	134.9E6	23.139	18.422
Target Compounds						
3) L1 AR-1016-1	6.501	5.604	31649349	17397192	46.597	53.473
4) L1 AR-1016-2	6.525	5.625	38748943	23910379	38.852	50.763 #
5) L1 AR-1016-3	6.592	5.821	27019220	34652588	45.840	144.003 #
6) L1 AR-1016-4	6.699	5.868	39914488	40392092	80.362	205.998 #
7) L1 AR-1016-5	7.015	6.102	104.9E6	51667262	223.408	199.114
8) L2 AR-1221-1	0.000	4.605	0	4668408	N.D.	55.380 #
9) L2 AR-1221-2	5.538	4.687	9670097	15311651	74.883	246.375 #
10) L2 AR-1221-3	5.634	4.775	14333034	19225738	35.415	97.863 #
11) L3 AR-1232-1	5.634	4.775	14333034	19225738	41.256	115.559 #
12) L3 AR-1232-2	6.207	5.625	27059229	23910379	146.221	140.124
13) L3 AR-1232-3	6.525	5.821	38748943	34652588	104.283	402.544 #
14) L3 AR-1232-4	6.699	5.916	39914488	31616150	215.326	411.743 #
15) L3 AR-1232-5	6.797	6.102	58263879	51667262	426.878	590.344 #
16) L4 AR-1242-1	6.501	5.604	31649349	17397192	66.582	79.011
17) L4 AR-1242-2	6.525	5.625	38748943	23910379	56.192	73.320 #
18) L4 AR-1242-3	6.592	5.821	27019220	34652588	65.330	210.686 #
19) L4 AR-1242-4	6.699	5.916	39914488	31616150	114.923	194.575 #
20) L4 AR-1242-5	7.483	6.486	163.7E6	126.3E6	459.813	603.948 #
21) L5 AR-1248-1	6.501	5.604	31649349	17397192	86.026	100.377
22) L5 AR-1248-2	6.797	5.868	58263879	40392092	116.615	175.997 #
23) L5 AR-1248-3	7.015	5.916	104.9E6	31616150	189.647	131.446 #
24) L5 AR-1248-4	7.442	6.102	163.2E6	51667262	256.636	174.237 #
25) L5 AR-1248-5	7.483	6.530	163.7E6	85627918	270.589	292.330
26) L6 AR-1254-1	7.413	6.486	144.9E6	126.3E6	273.381	331.284
27) L6 AR-1254-2	7.645	6.643	259.3E6	98739913	327.840	301.898
28) L6 AR-1254-3	8.024	7.071	294.6E6	171.0E6	396.920	315.770
29) L6 AR-1254-4	8.319	7.309	255.9E6	108.4E6	442.167	329.790 #
30) L6 AR-1254-5	8.749	7.743	468.4E6	296.9E6	758.968	642.036
31) L7 AR-1260-1	8.193	7.206	167.3E6	105.7E6	238.047	220.511
32) L7 AR-1260-2	8.456	7.401	306.4E6	110.1E6	340.048	190.953 #
33) L7 AR-1260-3	8.823	7.561	84591294	86543663	122.976	162.660 #
34) L7 AR-1260-4	9.054	8.047	238.4E6	32183831	373.553	77.526 #
35) L7 AR-1260-5	9.400	8.293	157.7E6	77898491	120.141	76.721 #
36) L8 AR-1262-1	8.823	7.743	84591294	296.9E6	114.938	1227.397 #
37) L8 AR-1262-2	9.400	8.293	157.7E6	77898491	144.375	92.589 #
38) L8 AR-1262-3	9.748	8.583	141.1E6	18635666	198.295	60.796 #
39) L8 AR-1262-4	9.805	8.647	71934116	69829814	128.474	119.153
40) L8 AR-1262-5	10.520	9.160	26257526	18243720	73.398	73.667
41) L9 AR-1268-1	9.748	8.583	141.1E6	18635666	361.658	68.135 #

Data Path : Z:\pestpcbsrv\HPCHEM1\ECD_Q\Data\PQ031020\
 Data File : PQ046854.D
 Signal(s) : Signal #1: ECD1A.ch Signal #2: ECD2B.ch
 Acq On : 10 Mar 2020 19:08
 Operator : AJ\MA
 Sample : L1764-02
 Misc :
 ALS Vial : 31 Sample Multiplier: 1

Instrument :
 ECD_Q
 ClientSampleId :
 S5-02-B

Integration File signal 1: autoint1.e
 Integration File signal 2: autoint2.e
 Quant Time: Mar 11 04:04:20 2020
 Quant Method : Z:\pestpcbsrv\HPCHEM1\ECD_Q\Method\PQ030920.M
 Quant Title : GC EXTRACTABLES
 QLast Update : Tue Mar 10 04:56:12 2020
 Response via : Initial Calibration
 Integrator: ChemStation

Volume Inj. : 2 µl
 Signal #1 Phase : ZB-MR1 Signal #2 Phase: ZB-MR2
 Signal #1 Info : 30Mx0.32mmx 0.50µ Signal #2 Info : 30M x 0.32mm x 0.25µm

	Compound	RT#1	RT#2	Resp#1	Resp#2	ng/ml	ng/ml
42)	L9 AR-1268-2	9.805	8.647	71934116	69829814	201.968	277.272 #
43)	L9 AR-1268-3	10.066	8.858	27316057	18625089	92.479	90.587
44)	L9 AR-1268-4	10.520	9.160	26257526	18243720	219.279	226.487
45)	L9 AR-1268-5	10.957	9.469	52889975	29444025	65.451	48.040 #

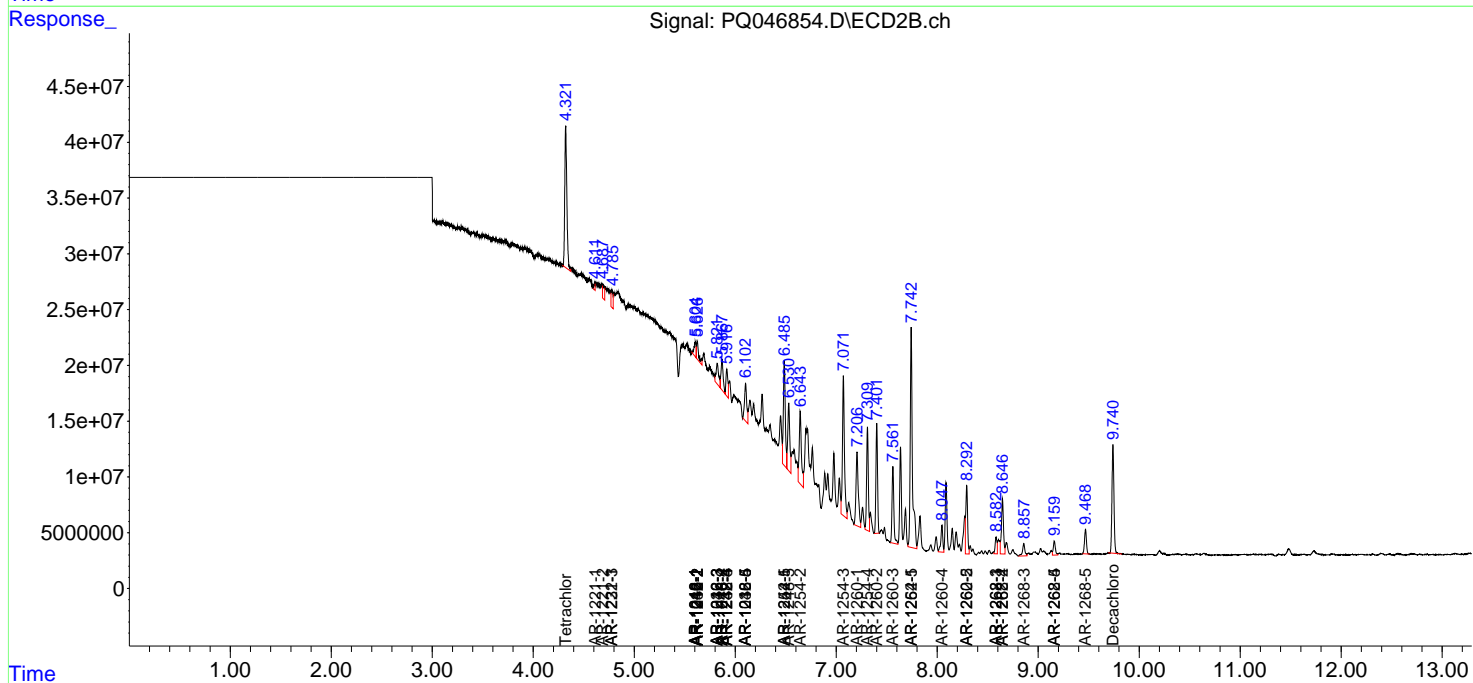
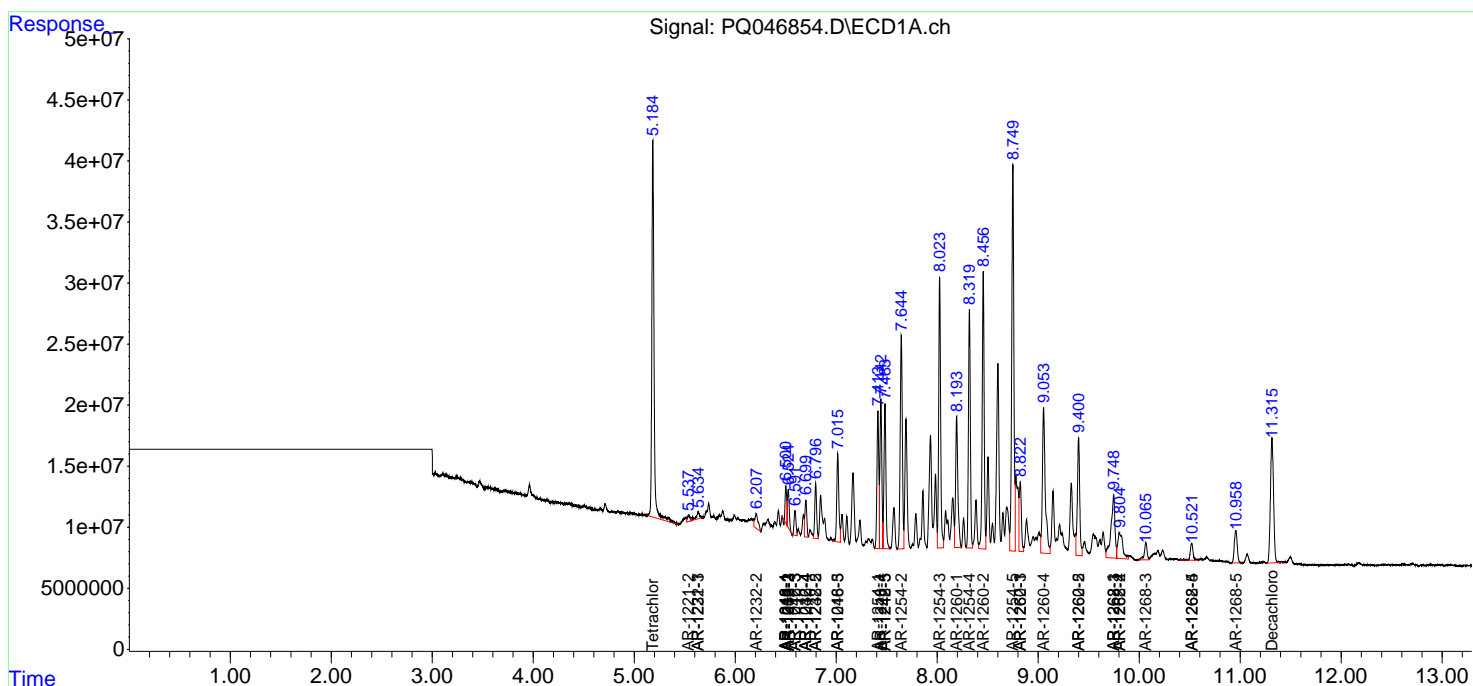
(f)=RT Delta > 1/2 Window (#)=Amounts differ by > 25% (m)=manual int.

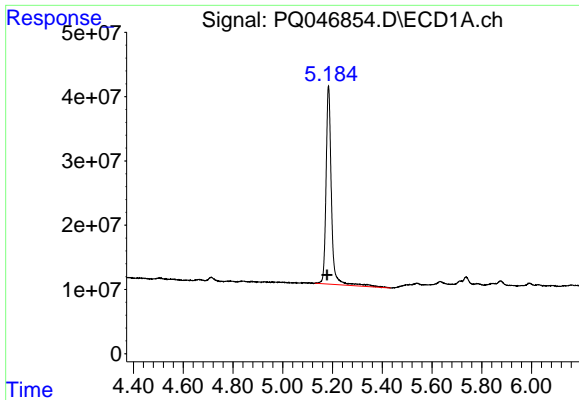
Data Path : Z:\pestpcbsrv\HPCHEM1\ECD_Q\Data\PQ031020\
 Data File : PQ046854.D
 Signal(s) : Signal #1: ECD1A.ch Signal #2: ECD2B.ch
 Acq On : 10 Mar 2020 19:08
 Operator : AJ\MA
 Sample : L1764-02
 Misc :
 ALS Vial : 31 Sample Multiplier: 1

Instrument :
 ECD_Q
 ClientSampled :
 S5-02-B

Integration File signal 1: autoint1.e
 Integration File signal 2: autoint2.e
 Quant Time: Mar 11 04:04:20 2020
 Quant Method : Z:\pestpcbsrv\HPCHEM1\ECD_Q\Method\PQ030920.M
 Quant Title : GC EXTRACTABLES
 QLast Update : Tue Mar 10 04:56:12 2020
 Response via : Initial Calibration
 Integrator: ChemStation

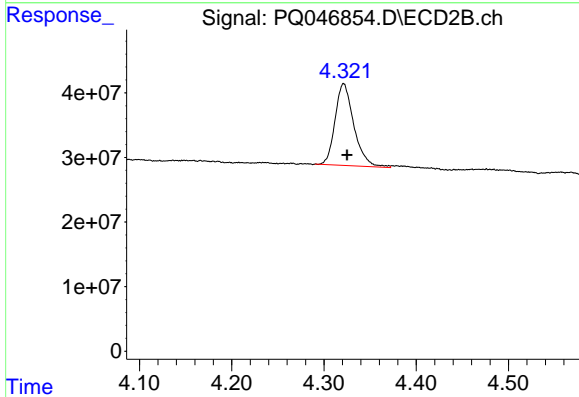
Volume Inj. : 2 µl
 Signal #1 Phase : ZB-MR1 Signal #2 Phase: ZB-MR2
 Signal #1 Info : 30Mx0.32mmx 0.50µ Signal #2 Info : 30M x 0.32mm x 0.25µm



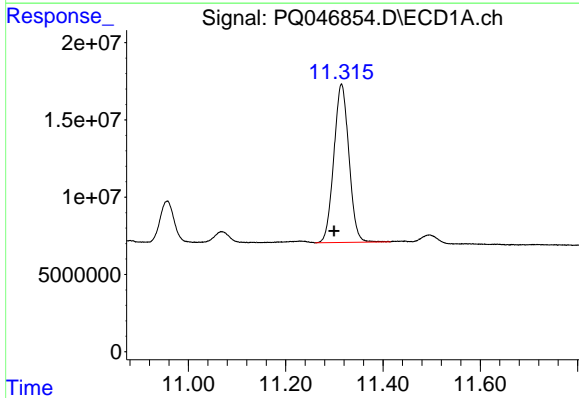


#1 Tetrachloro-m-xylene
R.T.: 5.184 min
Delta R.T.: 0.006 min
Response: 463410382
Conc: 24.80 ng/ml

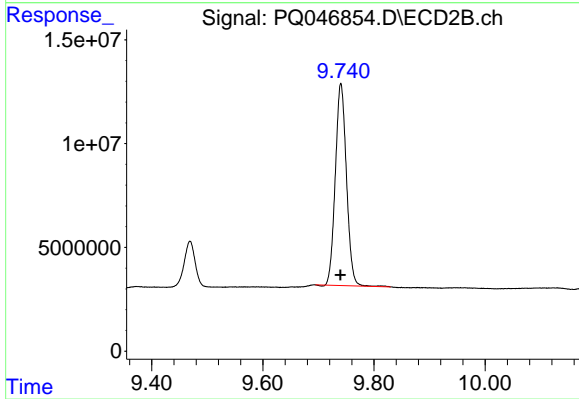
Instrument :
ECD_Q
ClientSampleId :
S5-02-B



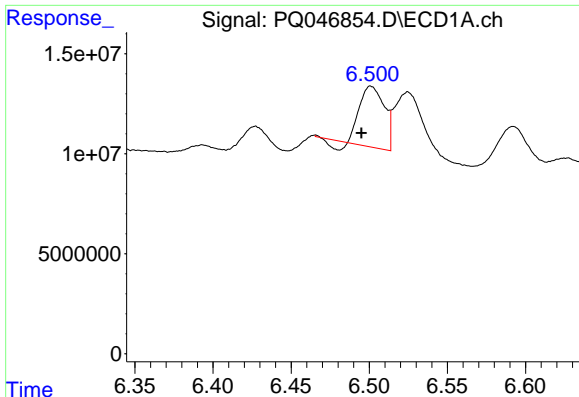
#1 Tetrachloro-m-xylene
R.T.: 4.321 min
Delta R.T.: -0.003 min
Response: 179097023
Conc: 19.85 ng/ml



#2 Decachlorobiphenyl
R.T.: 11.315 min
Delta R.T.: 0.015 min
Response: 219975718
Conc: 23.14 ng/ml



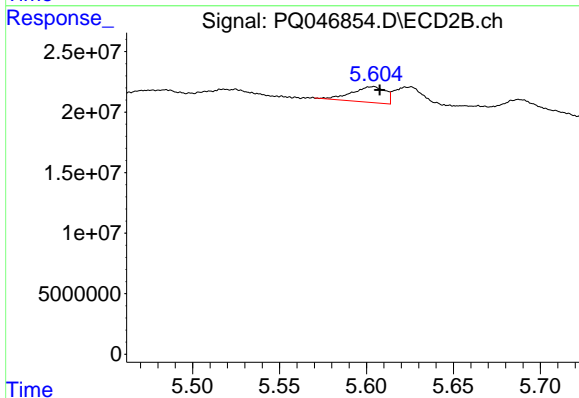
#2 Decachlorobiphenyl
R.T.: 9.740 min
Delta R.T.: 0.001 min
Response: 134922217
Conc: 18.42 ng/ml



#3 AR-1016-1

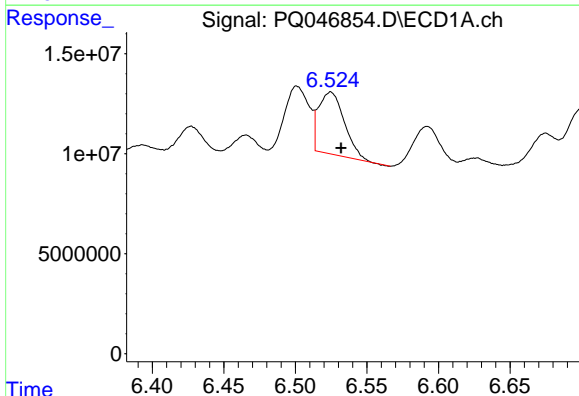
R.T.: 6.501 min
 Delta R.T.: 0.006 min
 Response: 31649349
 Conc: 46.60 ng/ml

Instrument :
 ECD_Q
 ClientSampleId :
 S5-02-B



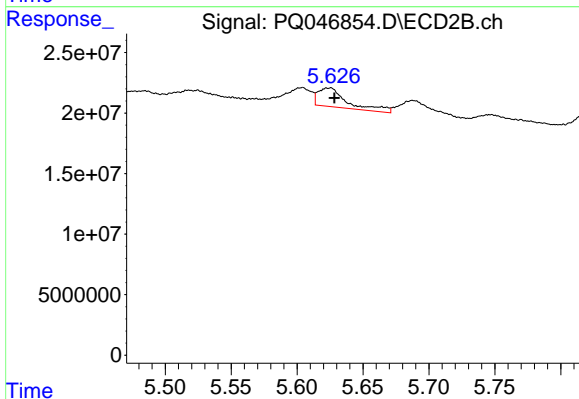
#3 AR-1016-1

R.T.: 5.604 min
 Delta R.T.: -0.004 min
 Response: 17397192
 Conc: 53.47 ng/ml



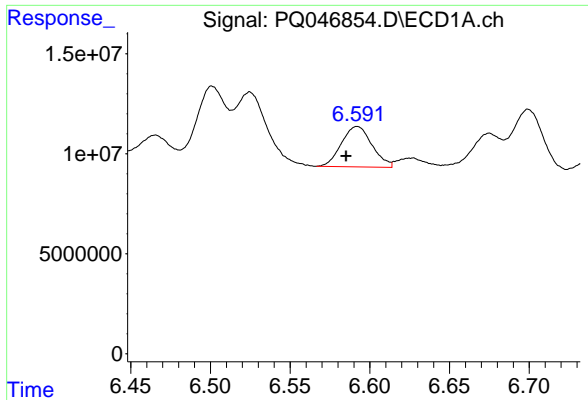
#4 AR-1016-2

R.T.: 6.525 min
 Delta R.T.: -0.007 min
 Response: 38748943
 Conc: 38.85 ng/ml



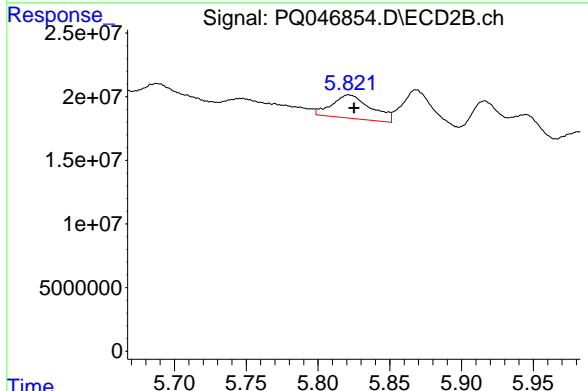
#4 AR-1016-2

R.T.: 5.625 min
 Delta R.T.: -0.004 min
 Response: 23910379
 Conc: 50.76 ng/ml

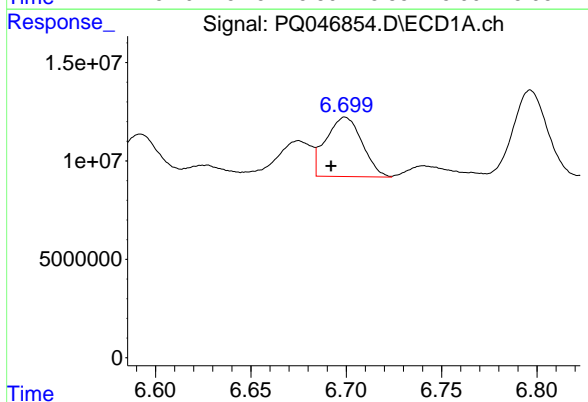


#5 AR-1016-3
 R.T.: 6.592 min
 Delta R.T.: 0.007 min
 Response: 27019220
 Conc: 45.84 ng/ml

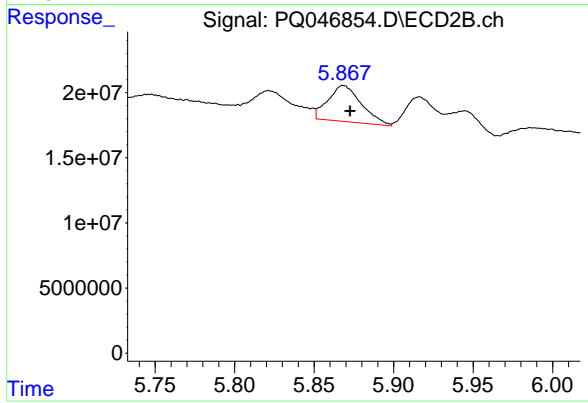
Instrument :
 ECD_Q
 ClientSampled :
 S5-02-B



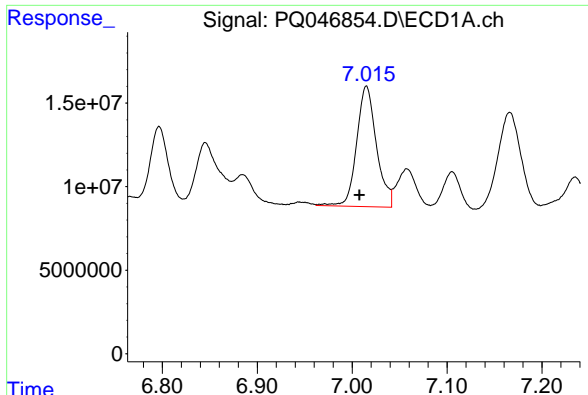
#5 AR-1016-3
 R.T.: 5.821 min
 Delta R.T.: -0.004 min
 Response: 34652588
 Conc: 144.00 ng/ml



#6 AR-1016-4
 R.T.: 6.699 min
 Delta R.T.: 0.007 min
 Response: 39914488
 Conc: 80.36 ng/ml



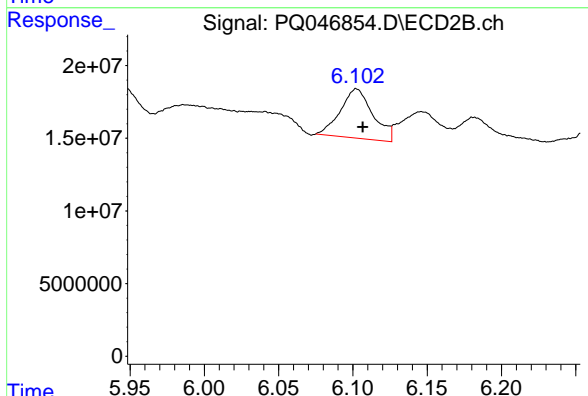
#6 AR-1016-4
 R.T.: 5.868 min
 Delta R.T.: -0.004 min
 Response: 40392092
 Conc: 206.00 ng/ml



#7 AR-1016-5

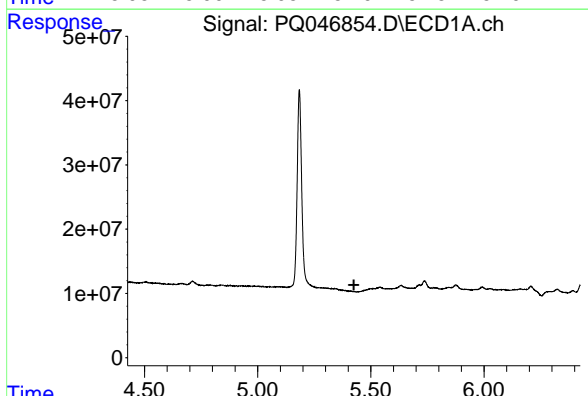
R.T.: 7.015 min
 Delta R.T.: 0.007 min
 Response: 104898101
 Conc: 223.41 ng/ml

Instrument :
 ECD_Q
 ClientSampled :
 S5-02-B



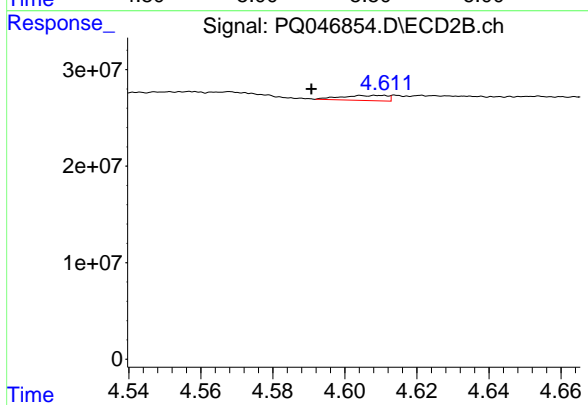
#7 AR-1016-5

R.T.: 6.102 min
 Delta R.T.: -0.004 min
 Response: 51667262
 Conc: 199.11 ng/ml



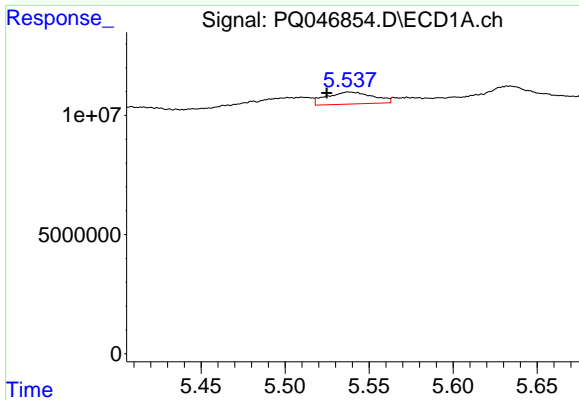
#8 AR-1221-1

R.T.: 0.000 min
 Exp R.T. : 5.425 min
 Response: 0
 Conc: N.D.



#8 AR-1221-1

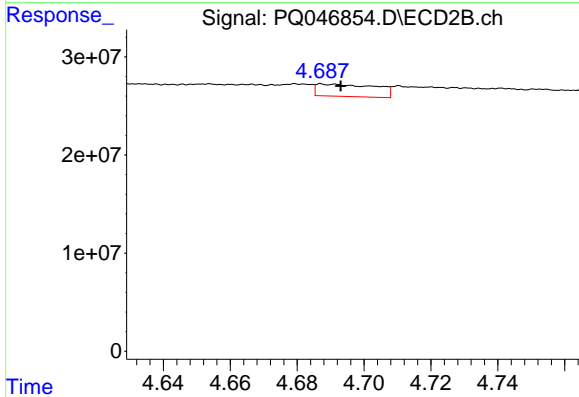
R.T.: 4.605 min
 Delta R.T.: 0.014 min
 Response: 4668408
 Conc: 55.38 ng/ml



#9 AR-1221-2

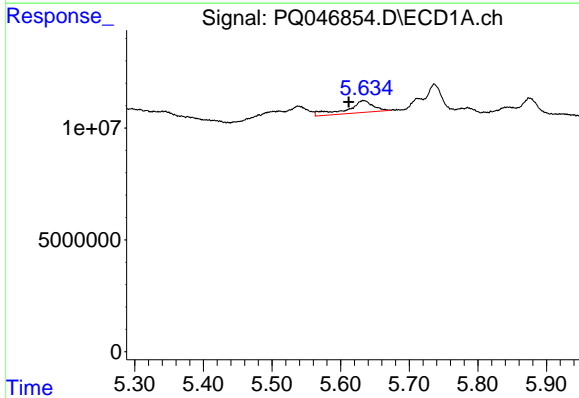
R.T.: 5.538 min
 Delta R.T.: 0.013 min
 Response: 9670097
 Conc: 74.88 ng/ml

Instrument :
 ECD_Q
 ClientSampleId :
 S5-02-B



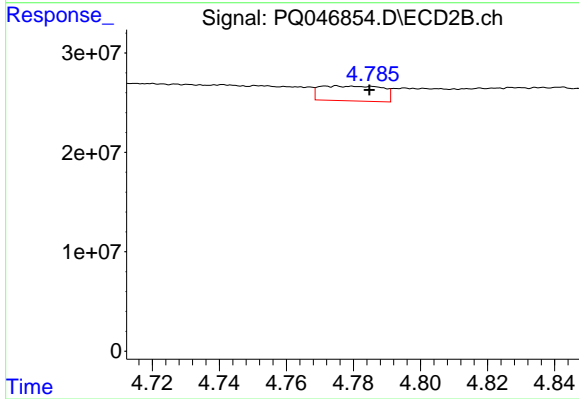
#9 AR-1221-2

R.T.: 4.687 min
 Delta R.T.: -0.006 min
 Response: 15311651
 Conc: 246.37 ng/ml



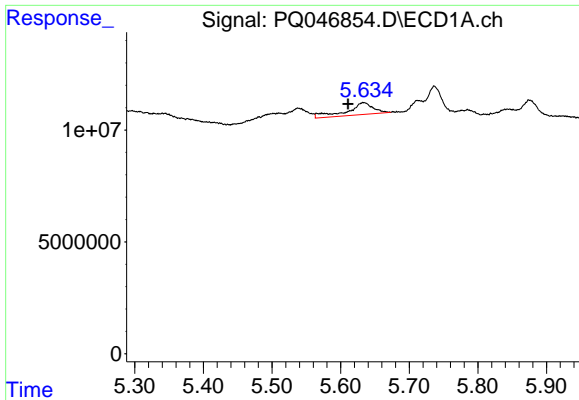
#10 AR-1221-3

R.T.: 5.634 min
 Delta R.T.: 0.022 min
 Response: 14333034
 Conc: 35.42 ng/ml



#10 AR-1221-3

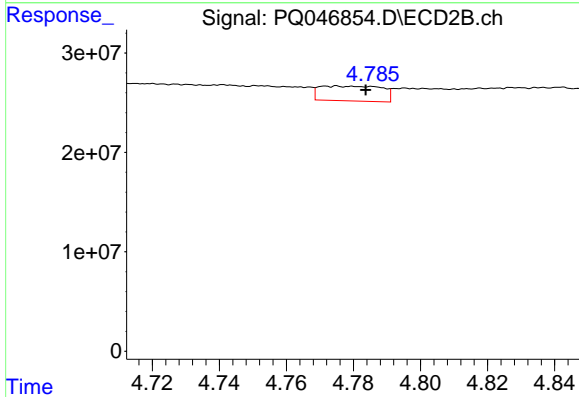
R.T.: 4.775 min
 Delta R.T.: -0.010 min
 Response: 19225738
 Conc: 97.86 ng/ml



#11 AR-1232-1

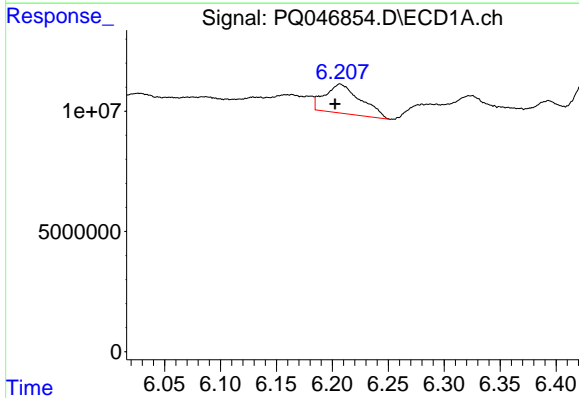
R.T.: 5.634 min
 Delta R.T.: 0.023 min
 Response: 14333034
 Conc: 41.26 ng/ml

Instrument :
 ECD_Q
ClientSampled :
 S5-02-B



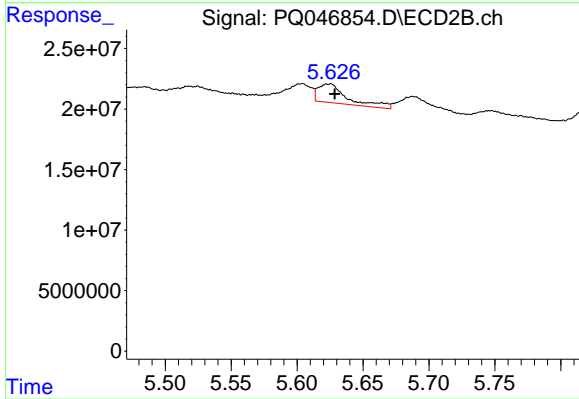
#11 AR-1232-1

R.T.: 4.775 min
 Delta R.T.: -0.008 min
 Response: 19225738
 Conc: 115.56 ng/ml



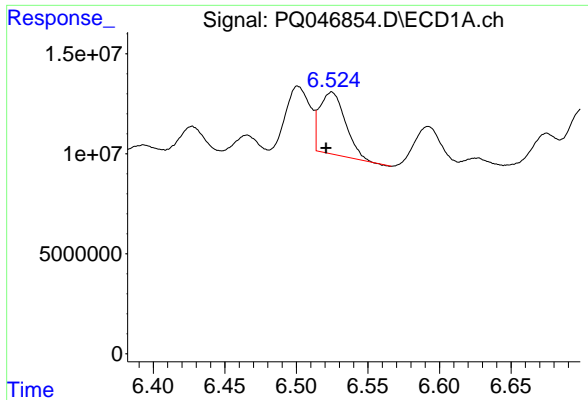
#12 AR-1232-2

R.T.: 6.207 min
 Delta R.T.: 0.004 min
 Response: 27059229
 Conc: 146.22 ng/ml



#12 AR-1232-2

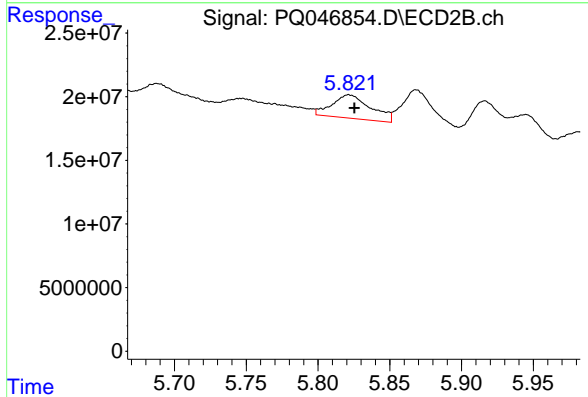
R.T.: 5.625 min
 Delta R.T.: -0.004 min
 Response: 23910379
 Conc: 140.12 ng/ml



#13 AR-1232-3

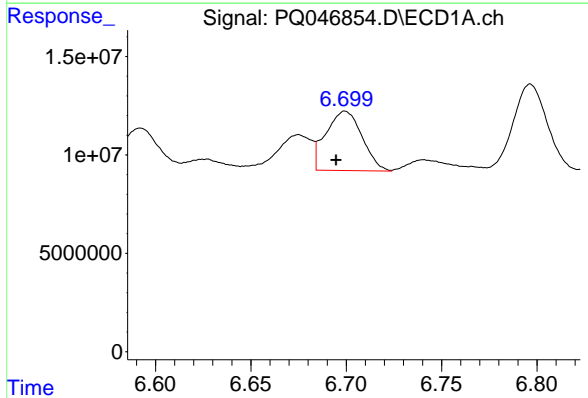
R.T.: 6.525 min
 Delta R.T.: 0.004 min
 Response: 38748943
 Conc: 104.28 ng/ml

Instrument :
 ECD_Q
 ClientSampleId :
 S5-02-B



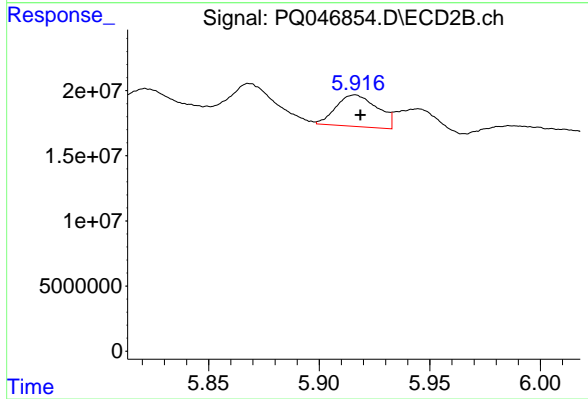
#13 AR-1232-3

R.T.: 5.821 min
 Delta R.T.: -0.004 min
 Response: 34652588
 Conc: 402.54 ng/ml



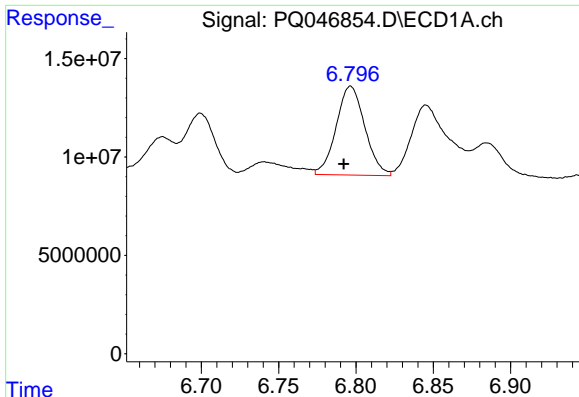
#14 AR-1232-4

R.T.: 6.699 min
 Delta R.T.: 0.005 min
 Response: 39914488
 Conc: 215.33 ng/ml



#14 AR-1232-4

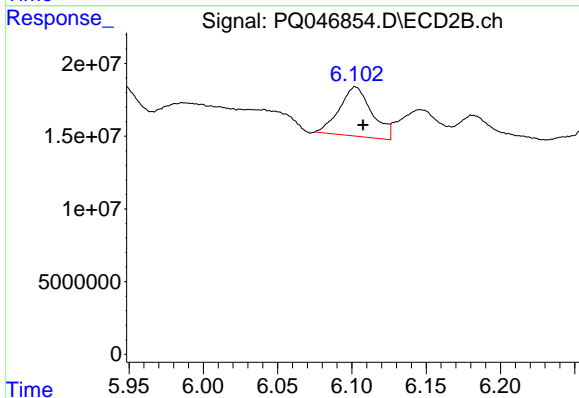
R.T.: 5.916 min
 Delta R.T.: -0.003 min
 Response: 31616150
 Conc: 411.74 ng/ml



#15 AR-1232-5

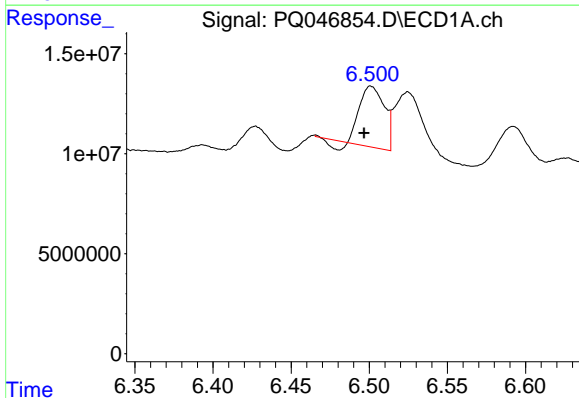
R.T.: 6.797 min
 Delta R.T.: 0.005 min
 Response: 58263879
 Conc: 426.88 ng/ml

Instrument :
 ECD_Q
 ClientSampled :
 S5-02-B



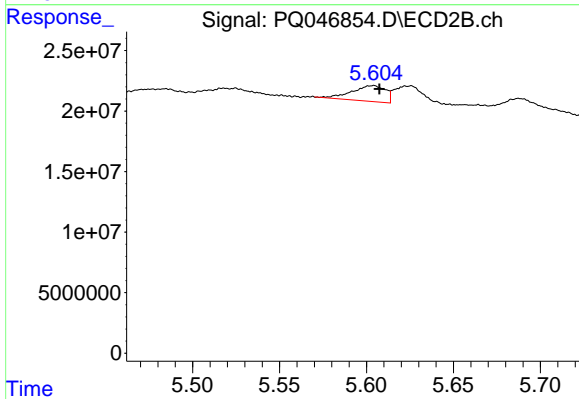
#15 AR-1232-5

R.T.: 6.102 min
 Delta R.T.: -0.005 min
 Response: 51667262
 Conc: 590.34 ng/ml



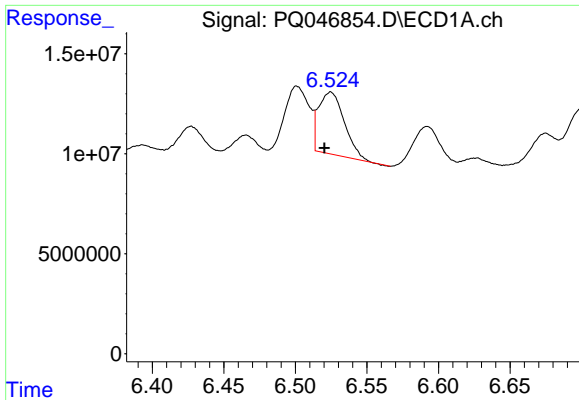
#16 AR-1242-1

R.T.: 6.501 min
 Delta R.T.: 0.004 min
 Response: 31649349
 Conc: 66.58 ng/ml



#16 AR-1242-1

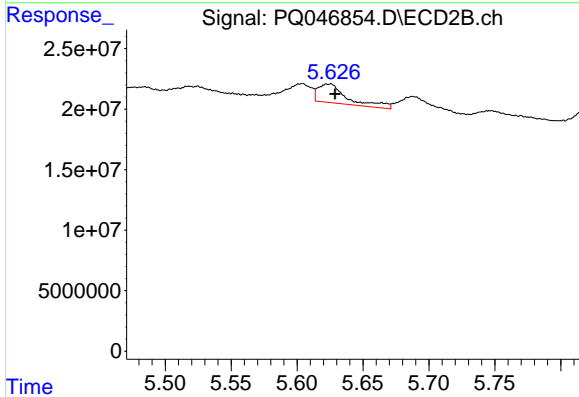
R.T.: 5.604 min
 Delta R.T.: -0.004 min
 Response: 17397192
 Conc: 79.01 ng/ml



#17 AR-1242-2

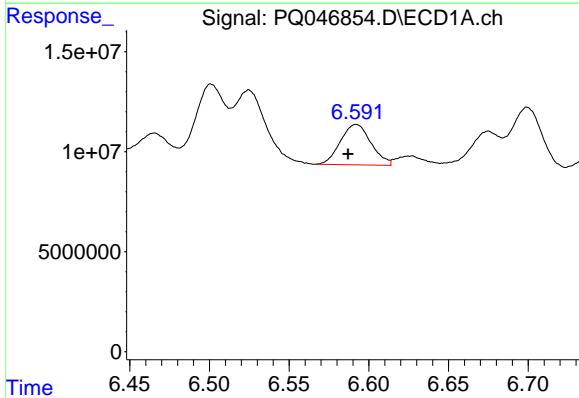
R.T.: 6.525 min
 Delta R.T.: 0.005 min
 Response: 38748943
 Conc: 56.19 ng/ml

Instrument :
 ECD_Q
 ClientSampleId :
 S5-02-B



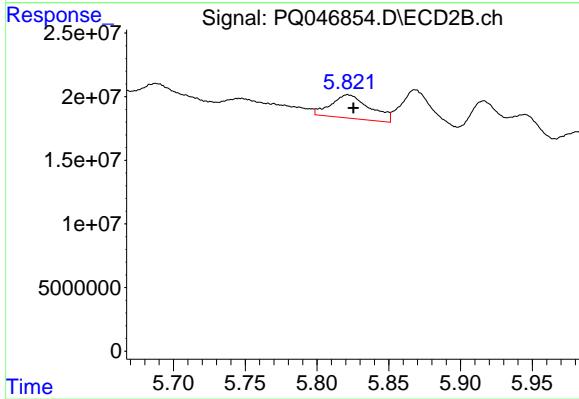
#17 AR-1242-2

R.T.: 5.625 min
 Delta R.T.: -0.004 min
 Response: 23910379
 Conc: 73.32 ng/ml



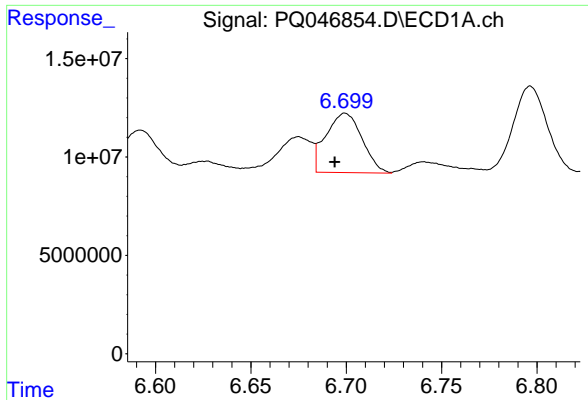
#18 AR-1242-3

R.T.: 6.592 min
 Delta R.T.: 0.005 min
 Response: 27019220
 Conc: 65.33 ng/ml



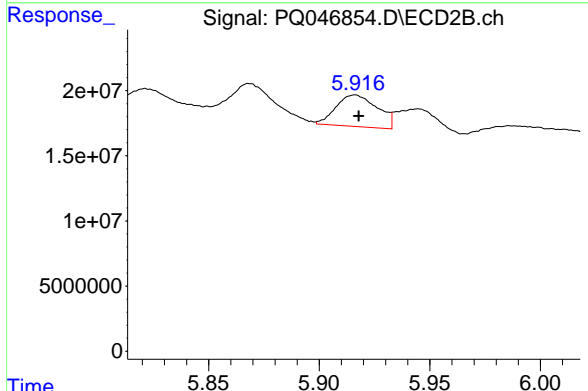
#18 AR-1242-3

R.T.: 5.821 min
 Delta R.T.: -0.004 min
 Response: 34652588
 Conc: 210.69 ng/ml

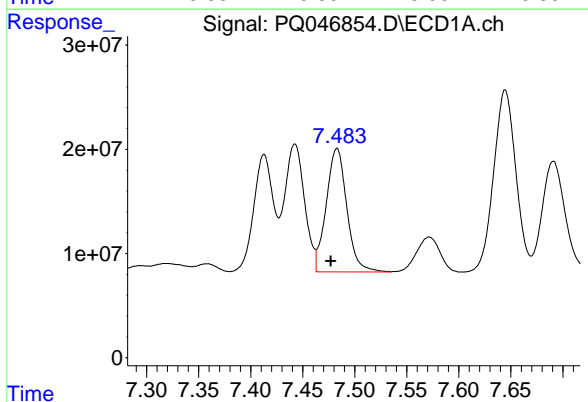


#19 AR-1242-4
 R.T.: 6.699 min
 Delta R.T.: 0.005 min
 Response: 39914488
 Conc: 114.92 ng/ml

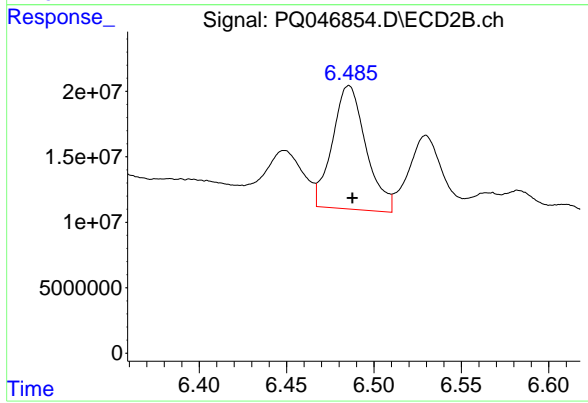
Instrument :
 ECD_Q
 ClientSampleId :
 S5-02-B



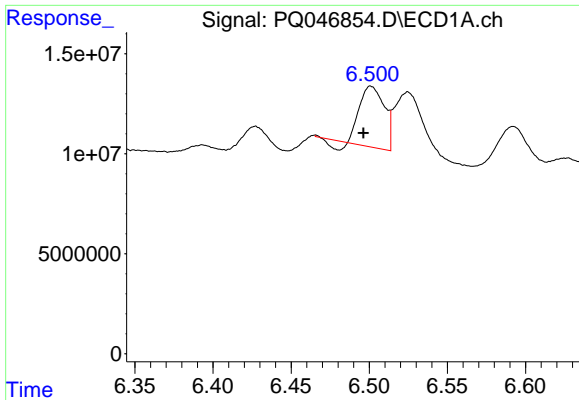
#19 AR-1242-4
 R.T.: 5.916 min
 Delta R.T.: -0.002 min
 Response: 31616150
 Conc: 194.57 ng/ml



#20 AR-1242-5
 R.T.: 7.483 min
 Delta R.T.: 0.006 min
 Response: 163682956
 Conc: 459.81 ng/ml



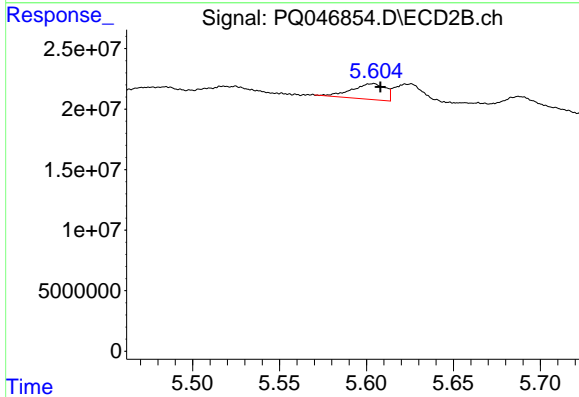
#20 AR-1242-5
 R.T.: 6.486 min
 Delta R.T.: -0.002 min
 Response: 126337441
 Conc: 603.95 ng/ml



#21 AR-1248-1

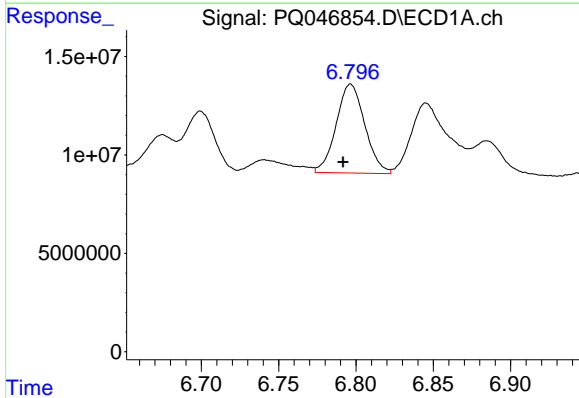
R.T.: 6.501 min
 Delta R.T.: 0.005 min
 Response: 31649349
 Conc: 86.03 ng/ml

Instrument :
 ECD_Q
 ClientSampleId :
 S5-02-B



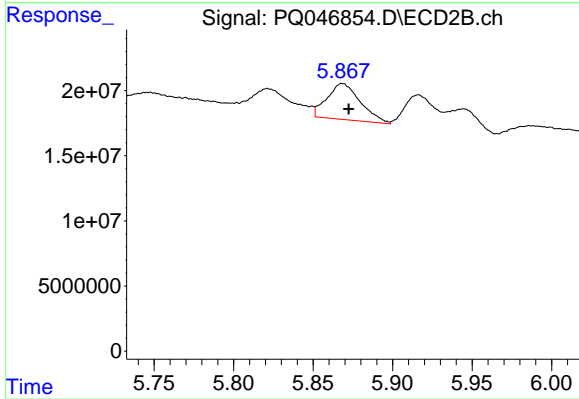
#21 AR-1248-1

R.T.: 5.604 min
 Delta R.T.: -0.004 min
 Response: 17397192
 Conc: 100.38 ng/ml



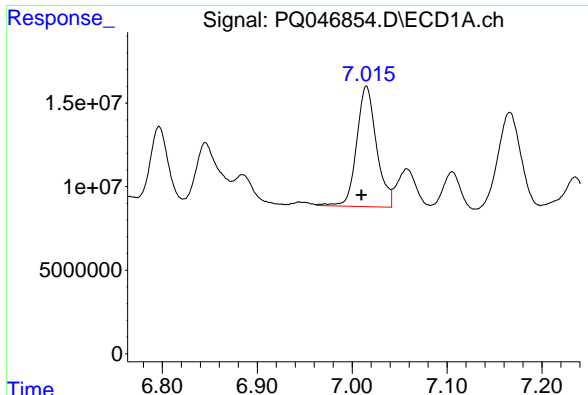
#22 AR-1248-2

R.T.: 6.797 min
 Delta R.T.: 0.005 min
 Response: 58263879
 Conc: 116.61 ng/ml



#22 AR-1248-2

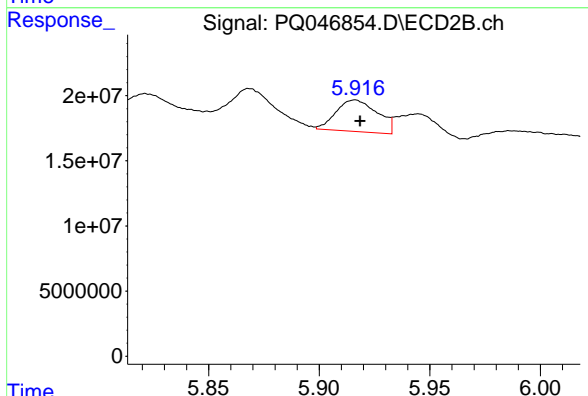
R.T.: 5.868 min
 Delta R.T.: -0.004 min
 Response: 40392092
 Conc: 176.00 ng/ml



#23 AR-1248-3

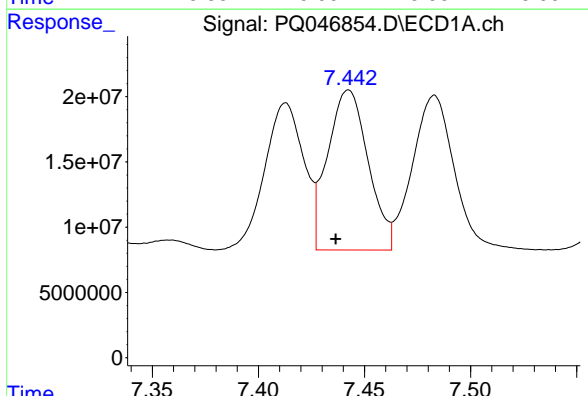
R.T.: 7.015 min
 Delta R.T.: 0.005 min
 Response: 104898101
 Conc: 189.65 ng/ml

Instrument :
 ECD_Q
 ClientSampled :
 S5-02-B



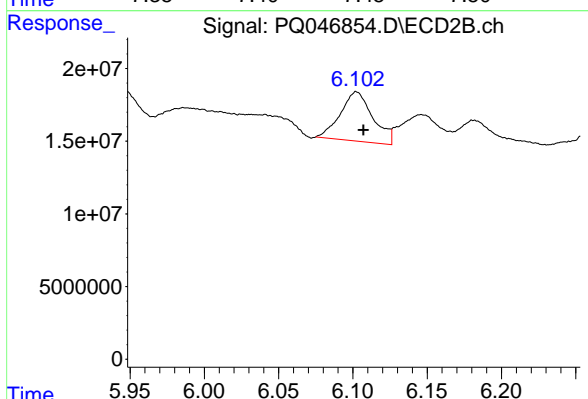
#23 AR-1248-3

R.T.: 5.916 min
 Delta R.T.: -0.002 min
 Response: 31616150
 Conc: 131.45 ng/ml



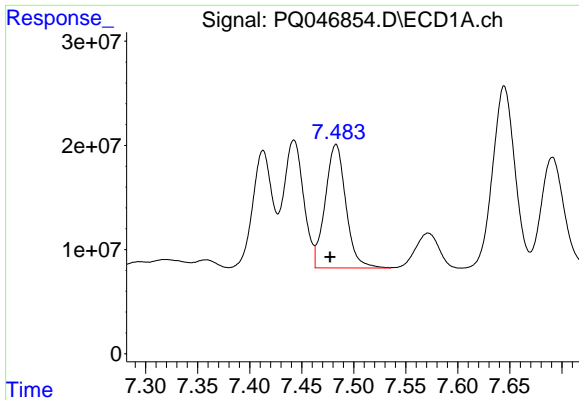
#24 AR-1248-4

R.T.: 7.442 min
 Delta R.T.: 0.006 min
 Response: 163226077
 Conc: 256.64 ng/ml



#24 AR-1248-4

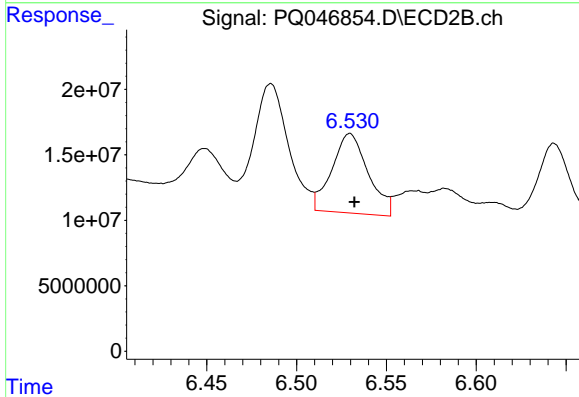
R.T.: 6.102 min
 Delta R.T.: -0.005 min
 Response: 51667262
 Conc: 174.24 ng/ml



#25 AR-1248-5

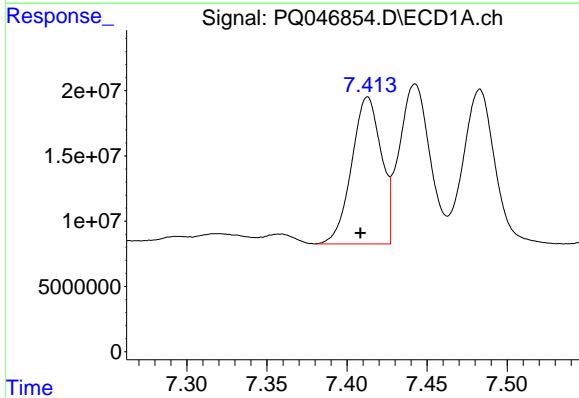
R.T.: 7.483 min
 Delta R.T.: 0.006 min
 Response: 163682956
 Conc: 270.59 ng/ml

Instrument :
 ECD_Q
ClientSampled :
 S5-02-B



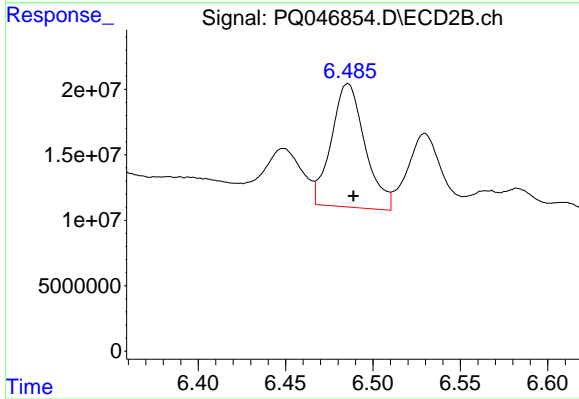
#25 AR-1248-5

R.T.: 6.530 min
 Delta R.T.: -0.003 min
 Response: 85627918
 Conc: 292.33 ng/ml



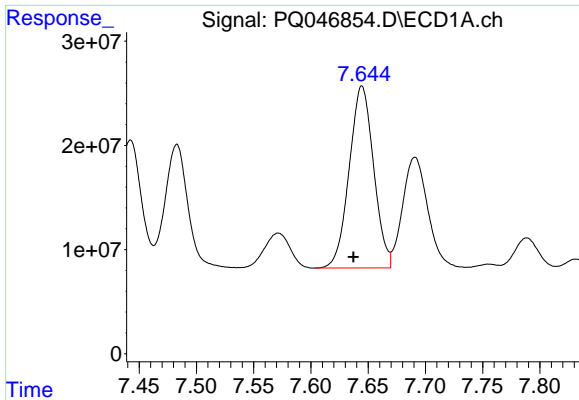
#26 AR-1254-1

R.T.: 7.413 min
 Delta R.T.: 0.005 min
 Response: 144877136
 Conc: 273.38 ng/ml



#26 AR-1254-1

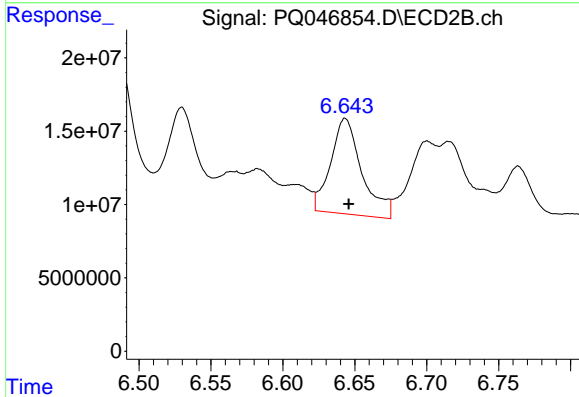
R.T.: 6.486 min
 Delta R.T.: -0.003 min
 Response: 126337441
 Conc: 331.28 ng/ml



#27 AR-1254-2

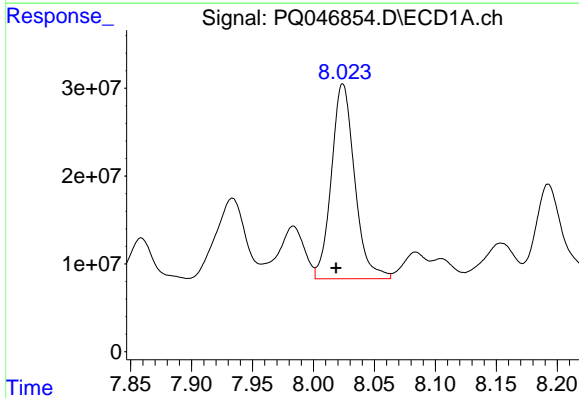
R.T.: 7.645 min
 Delta R.T.: 0.007 min
 Response: 259263800
 Conc: 327.84 ng/ml

Instrument :
 ECD_Q
 ClientSampleId :
 S5-02-B



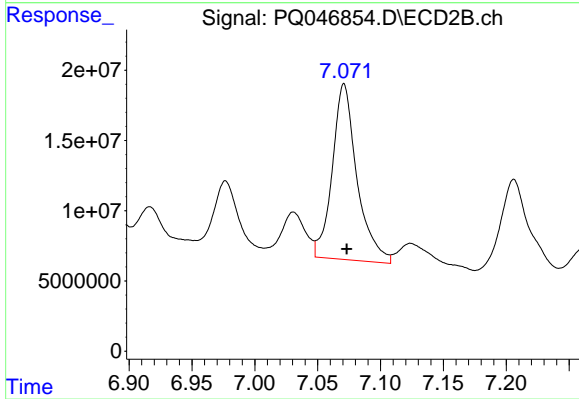
#27 AR-1254-2

R.T.: 6.643 min
 Delta R.T.: -0.003 min
 Response: 98739913
 Conc: 301.90 ng/ml



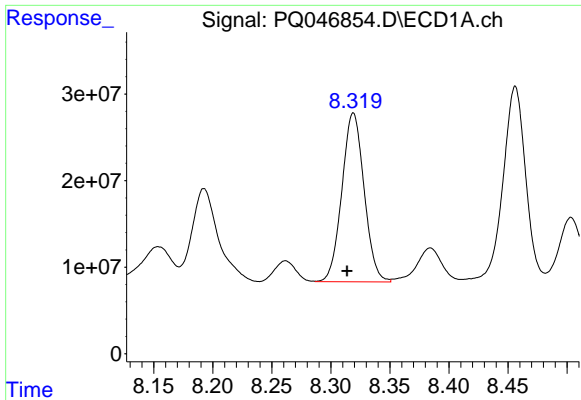
#28 AR-1254-3

R.T.: 8.024 min
 Delta R.T.: 0.005 min
 Response: 294629624
 Conc: 396.92 ng/ml



#28 AR-1254-3

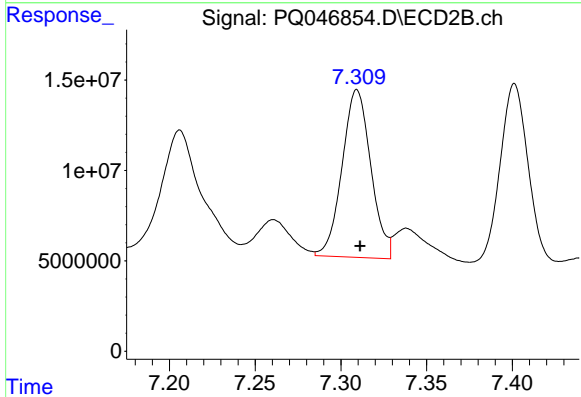
R.T.: 7.071 min
 Delta R.T.: -0.002 min
 Response: 171035482
 Conc: 315.77 ng/ml



#29 AR-1254-4

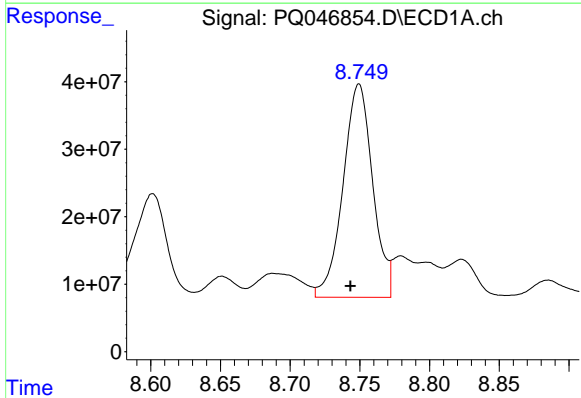
R.T.: 8.319 min
 Delta R.T.: 0.005 min
 Response: 255890158
 Conc: 442.17 ng/ml

Instrument :
 ECD_Q
 ClientSampleId :
 S5-02-B



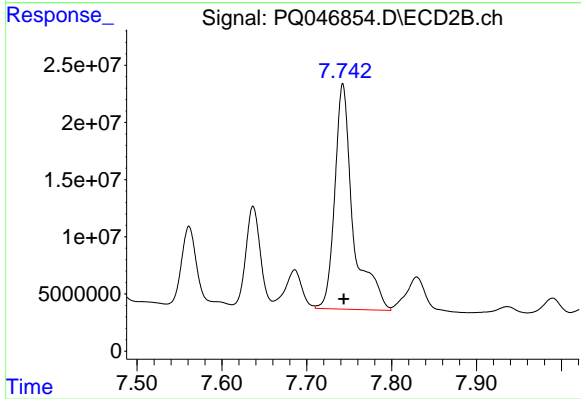
#29 AR-1254-4

R.T.: 7.309 min
 Delta R.T.: -0.002 min
 Response: 108371168
 Conc: 329.79 ng/ml



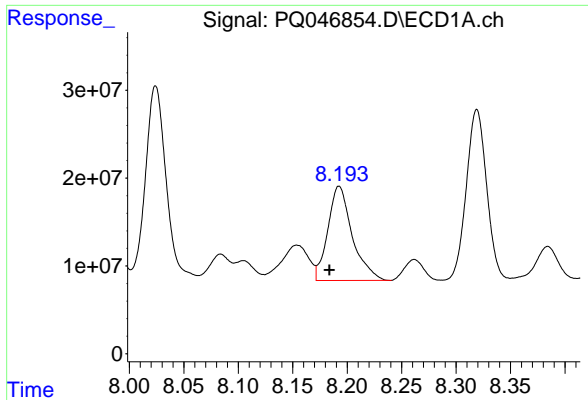
#30 AR-1254-5

R.T.: 8.749 min
 Delta R.T.: 0.006 min
 Response: 468433054
 Conc: 758.97 ng/ml



#30 AR-1254-5

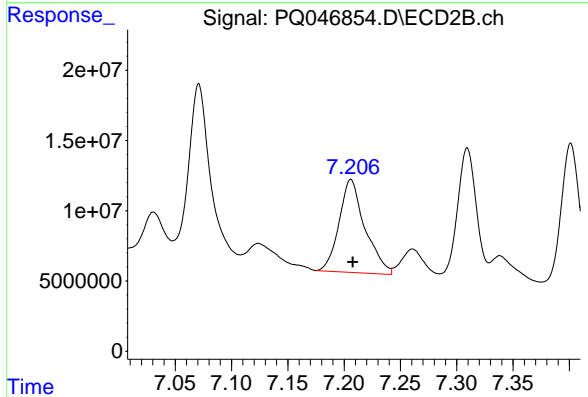
R.T.: 7.743 min
 Delta R.T.: -0.001 min
 Response: 296867504
 Conc: 642.04 ng/ml



#31 AR-1260-1

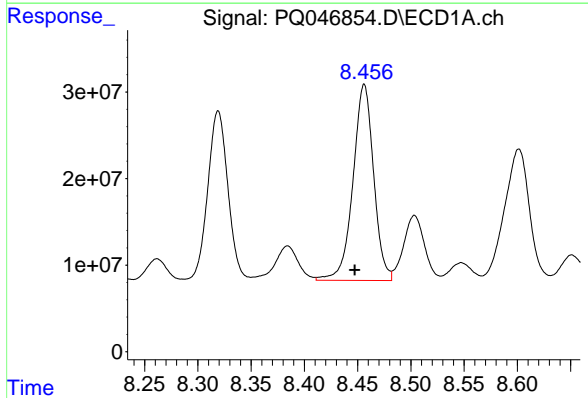
R.T.: 8.193 min
 Delta R.T.: 0.009 min
 Response: 167313124
 Conc: 238.05 ng/ml

Instrument :
 ECD_Q
 ClientSampled :
 S5-02-B



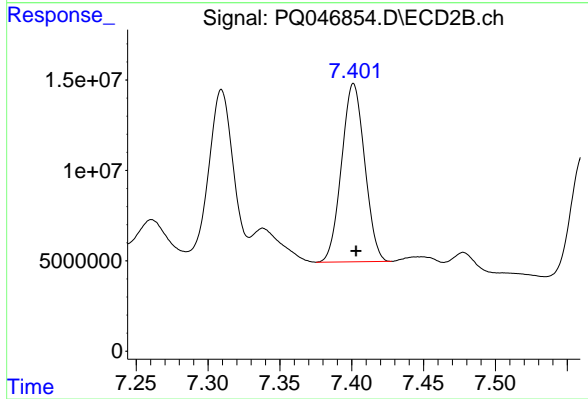
#31 AR-1260-1

R.T.: 7.206 min
 Delta R.T.: -0.002 min
 Response: 105716504
 Conc: 220.51 ng/ml



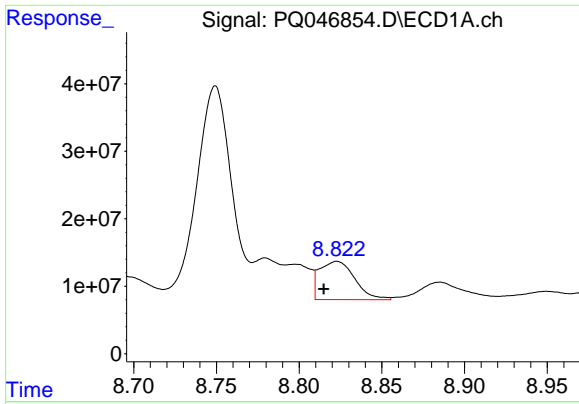
#32 AR-1260-2

R.T.: 8.456 min
 Delta R.T.: 0.009 min
 Response: 306378218
 Conc: 340.05 ng/ml



#32 AR-1260-2

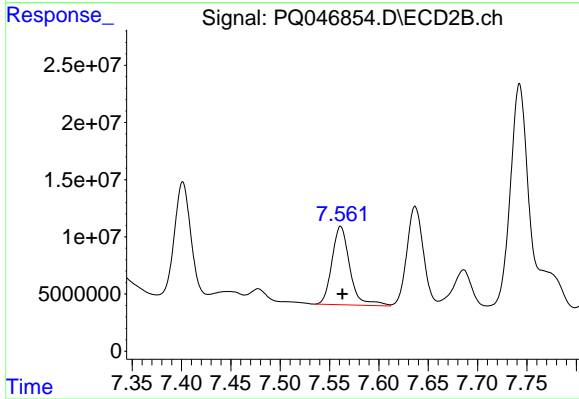
R.T.: 7.401 min
 Delta R.T.: -0.002 min
 Response: 110114690
 Conc: 190.95 ng/ml



#33 AR-1260-3

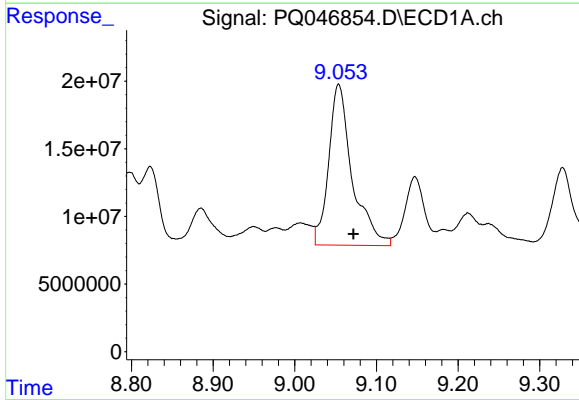
R.T.: 8.823 min
 Delta R.T.: 0.008 min
 Response: 84591294
 Conc: 122.98 ng/ml

Instrument :
 ECD_Q
 ClientSampled :
 S5-02-B



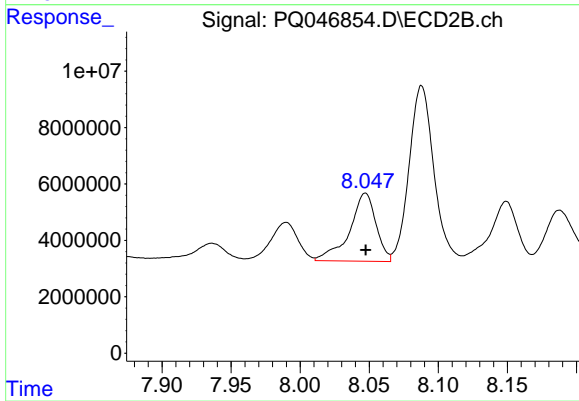
#33 AR-1260-3

R.T.: 7.561 min
 Delta R.T.: -0.002 min
 Response: 86543663
 Conc: 162.66 ng/ml



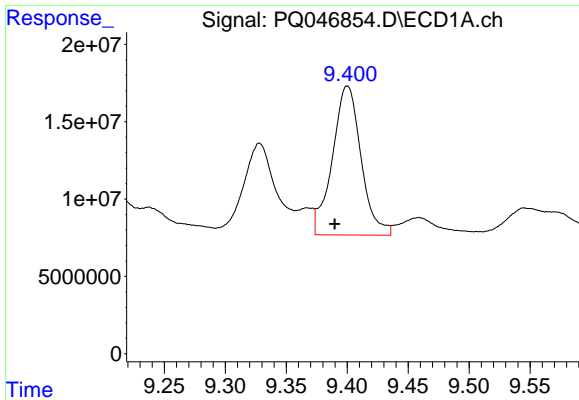
#34 AR-1260-4

R.T.: 9.054 min
 Delta R.T.: -0.018 min
 Response: 238366749
 Conc: 373.55 ng/ml



#34 AR-1260-4

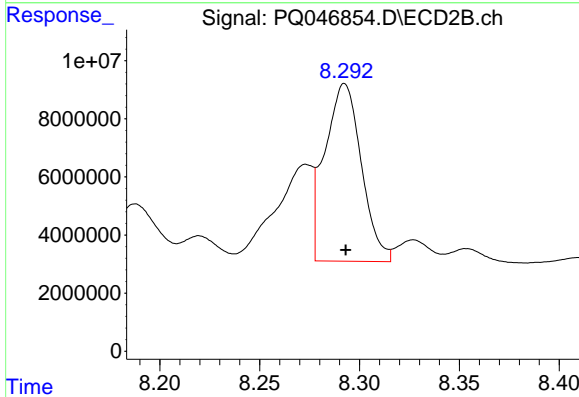
R.T.: 8.047 min
 Delta R.T.: 0.000 min
 Response: 32183831
 Conc: 77.53 ng/ml



#35 AR-1260-5

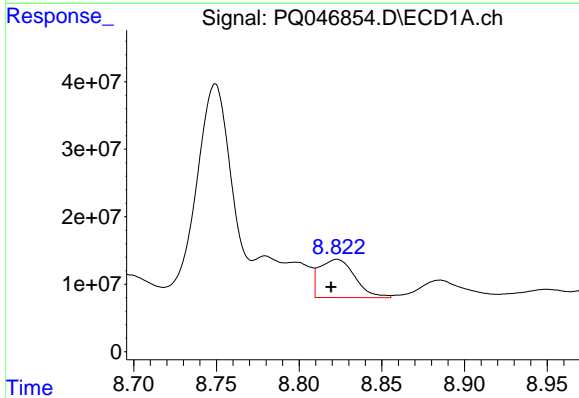
R.T.: 9.400 min
Delta R.T.: 0.010 min
Response: 157690070
Conc: 120.14 ng/ml

Instrument :
ECD_Q
ClientSampled :
S5-02-B



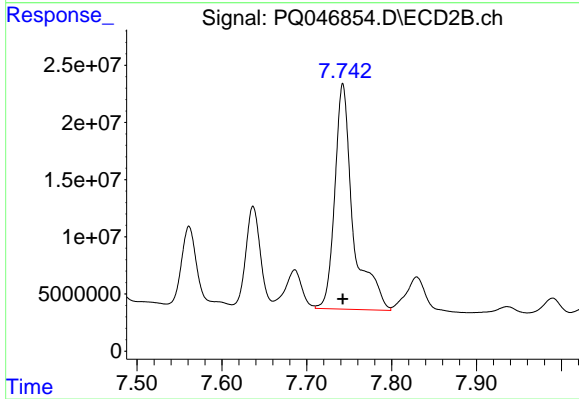
#35 AR-1260-5

R.T.: 8.293 min
Delta R.T.: 0.000 min
Response: 77898491
Conc: 76.72 ng/ml



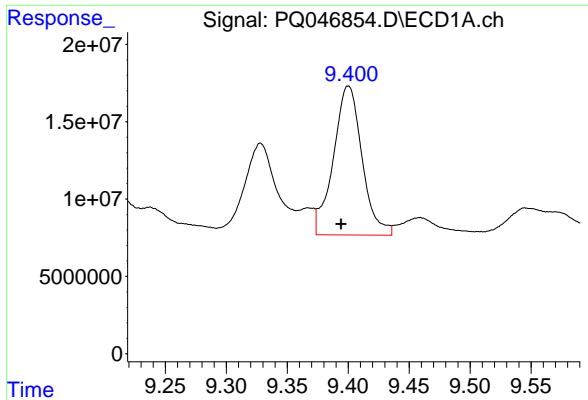
#36 AR-1262-1

R.T.: 8.823 min
Delta R.T.: 0.004 min
Response: 84591294
Conc: 114.94 ng/ml



#36 AR-1262-1

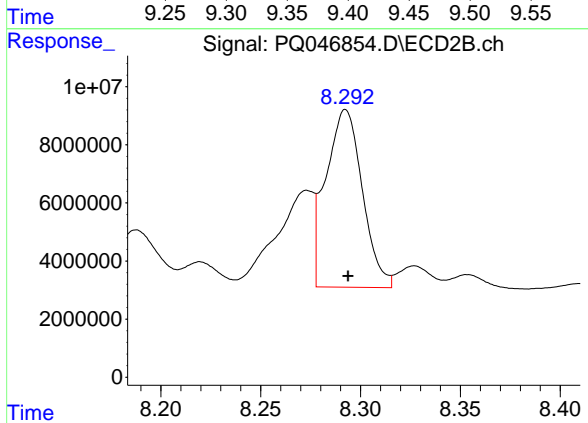
R.T.: 7.743 min
Delta R.T.: 0.000 min
Response: 296867504
Conc: 1227.40 ng/ml



#37 AR-1262-2

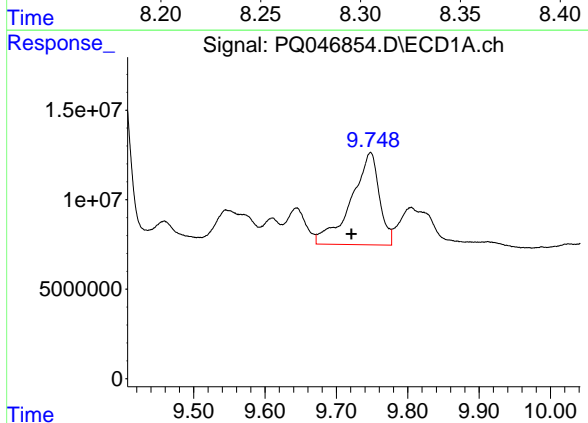
R.T.: 9.400 min
 Delta R.T.: 0.006 min
 Response: 157690070
 Conc: 144.38 ng/ml

Instrument :
 ECD_Q
 ClientSampled :
 S5-02-B



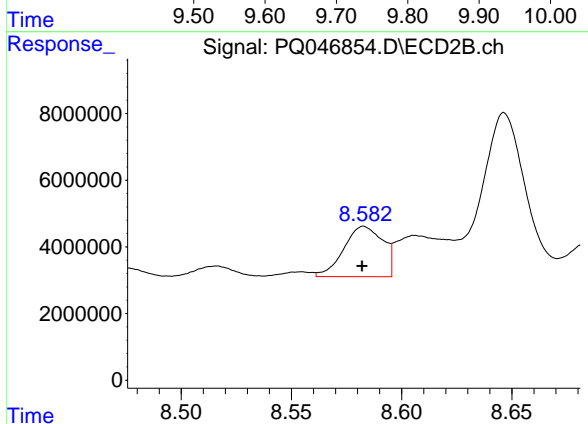
#37 AR-1262-2

R.T.: 8.293 min
 Delta R.T.: -0.001 min
 Response: 77898491
 Conc: 92.59 ng/ml



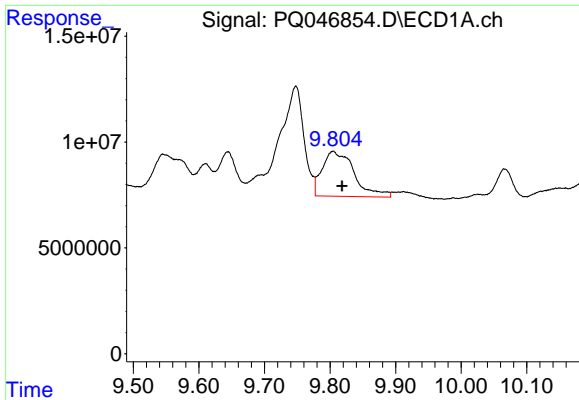
#38 AR-1262-3

R.T.: 9.748 min
 Delta R.T.: 0.027 min
 Response: 141116174
 Conc: 198.29 ng/ml



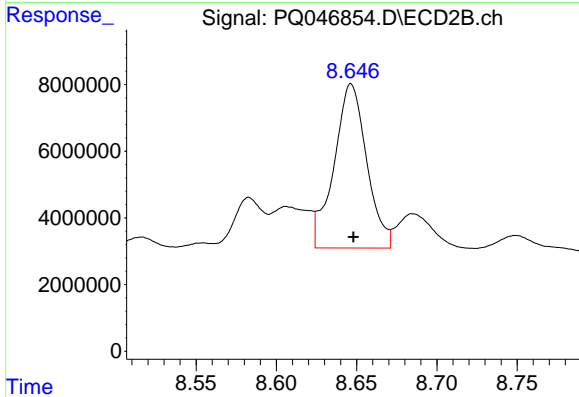
#38 AR-1262-3

R.T.: 8.583 min
 Delta R.T.: 0.000 min
 Response: 18635666
 Conc: 60.80 ng/ml

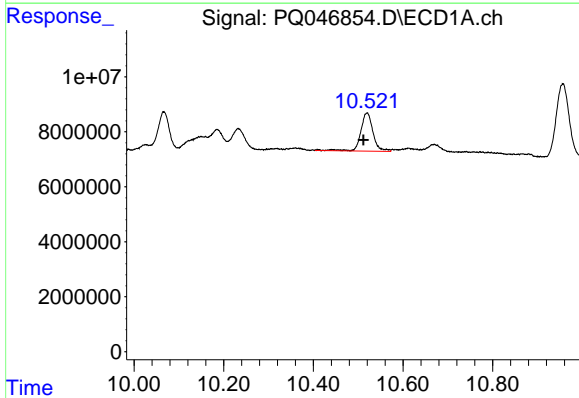


#39 AR-1262-4
 R.T.: 9.805 min
 Delta R.T.: -0.013 min
 Response: 71934116
 Conc: 128.47 ng/ml

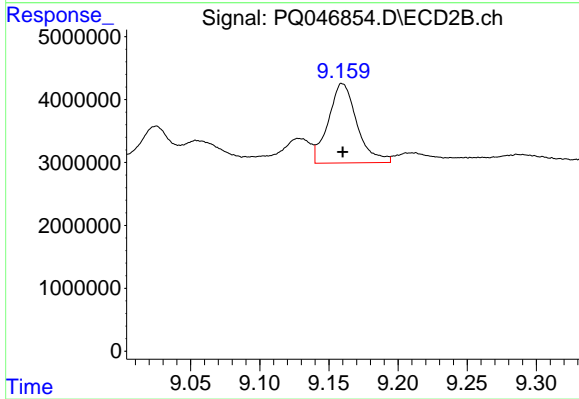
Instrument :
 ECD_Q
 ClientSampled :
 S5-02-B



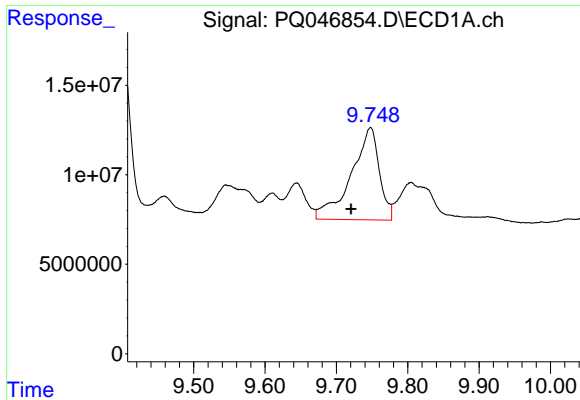
#39 AR-1262-4
 R.T.: 8.647 min
 Delta R.T.: -0.001 min
 Response: 69829814
 Conc: 119.15 ng/ml



#40 AR-1262-5
 R.T.: 10.520 min
 Delta R.T.: 0.008 min
 Response: 26257526
 Conc: 73.40 ng/ml



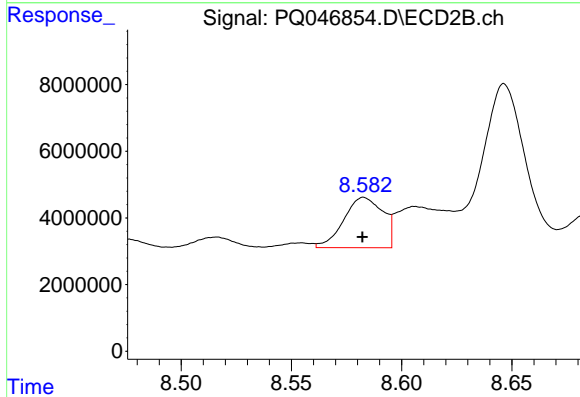
#40 AR-1262-5
 R.T.: 9.160 min
 Delta R.T.: 0.000 min
 Response: 18243720
 Conc: 73.67 ng/ml



#41 AR-1268-1

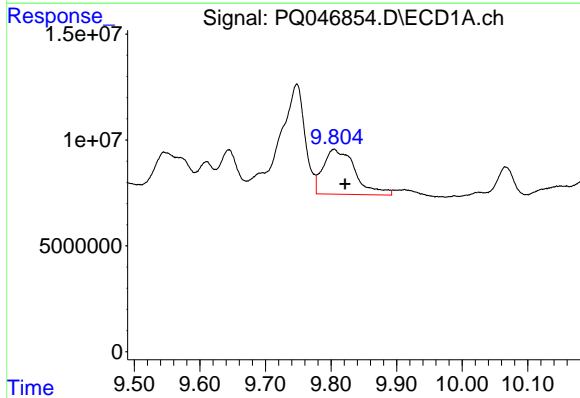
R.T.: 9.748 min
 Delta R.T.: 0.027 min
 Response: 141116174
 Conc: 361.66 ng/ml

Instrument :
 ECD_Q
 ClientSampled :
 S5-02-B



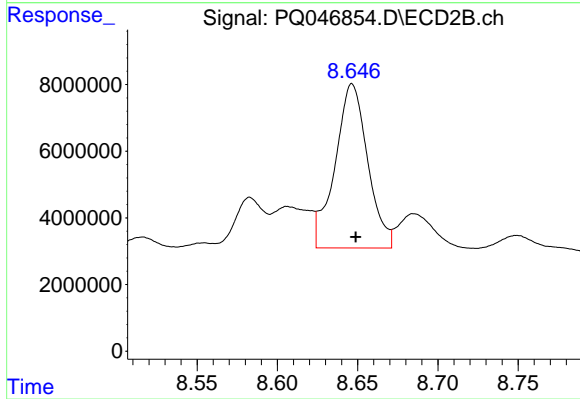
#41 AR-1268-1

R.T.: 8.583 min
 Delta R.T.: 0.000 min
 Response: 18635666
 Conc: 68.14 ng/ml



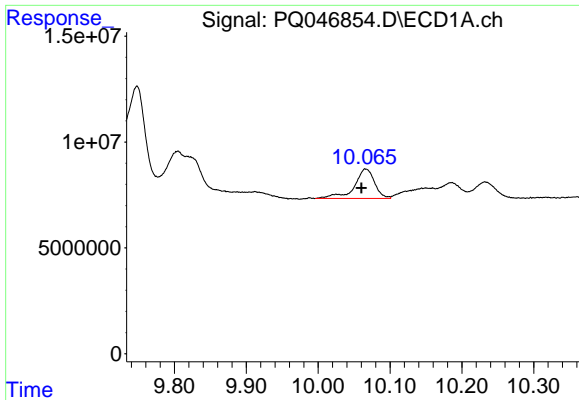
#42 AR-1268-2

R.T.: 9.805 min
 Delta R.T.: -0.017 min
 Response: 71934116
 Conc: 201.97 ng/ml



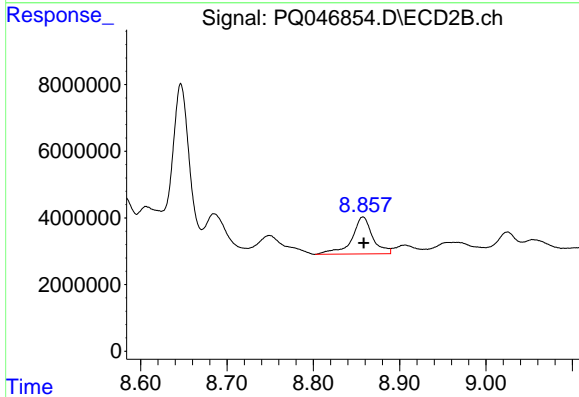
#42 AR-1268-2

R.T.: 8.647 min
 Delta R.T.: -0.002 min
 Response: 69829814
 Conc: 277.27 ng/ml

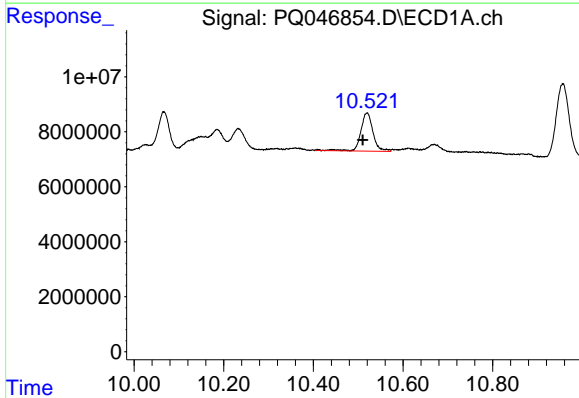


#43 AR-1268-3
 R.T.: 10.066 min
 Delta R.T.: 0.006 min
 Response: 27316057
 Conc: 92.48 ng/ml

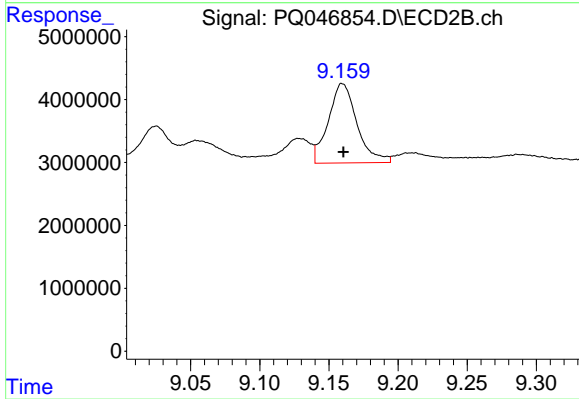
Instrument :
 ECD_Q
 ClientSampled :
 S5-02-B



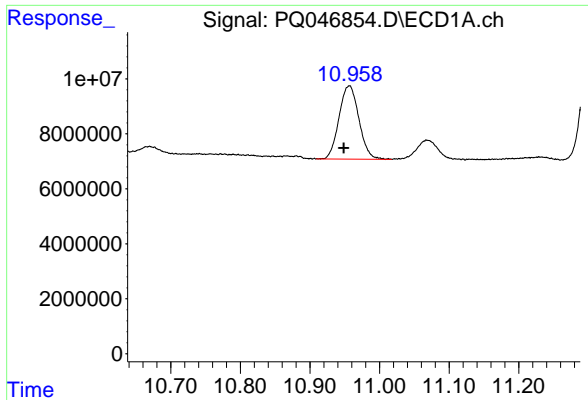
#43 AR-1268-3
 R.T.: 8.858 min
 Delta R.T.: 0.000 min
 Response: 18625089
 Conc: 90.59 ng/ml



#44 AR-1268-4
 R.T.: 10.520 min
 Delta R.T.: 0.010 min
 Response: 26257526
 Conc: 219.28 ng/ml



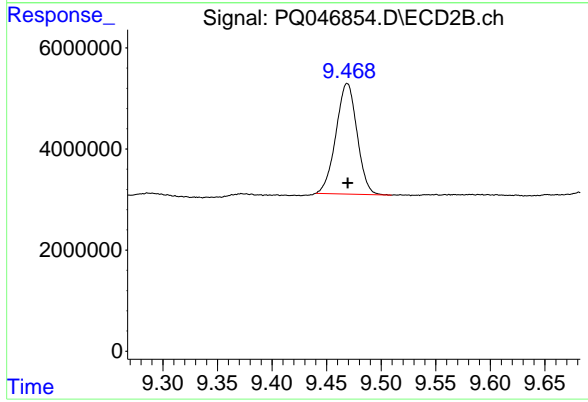
#44 AR-1268-4
 R.T.: 9.160 min
 Delta R.T.: 0.000 min
 Response: 18243720
 Conc: 226.49 ng/ml



#45 AR-1268-5

R.T.: 10.957 min
 Delta R.T.: 0.008 min
 Response: 52889975
 Conc: 65.45 ng/ml

Instrument :
 ECD_Q
 ClientSampled :
 S5-02-B



#45 AR-1268-5

R.T.: 9.469 min
 Delta R.T.: 0.000 min
 Response: 29444025
 Conc: 48.04 ng/ml