

Data Path : Z:\pestpcbsrv\HPCHEM1\ECD_Q\Data\PQ031020\
 Data File : PQ046838.D
 Signal(s) : Signal #1: ECD1A.ch Signal #2: ECD2B.ch
 Acq On : 10 Mar 2020 13:06
 Operator : AJ\MA
 Sample : L1841-22
 Misc :
 ALS Vial : 17 Sample Multiplier: 1

Instrument :
 ECD_Q
 ClientSampleId :
 S-ROOF-B

Integration File signal 1: autoint1.e
 Integration File signal 2: autoint2.e
 Quant Time: Mar 10 13:53:26 2020
 Quant Method : Z:\pestpcbsrv\HPCHEM1\ECD_Q\Method\PQ030920.M
 Quant Title : GC EXTRACTABLES
 QLast Update : Tue Mar 10 04:56:12 2020
 Response via : Initial Calibration
 Integrator: ChemStation

Volume Inj. : 2 µl
 Signal #1 Phase : ZB-MR1 Signal #2 Phase: ZB-MR2
 Signal #1 Info : 30Mx0.32mmx 0.50µ Signal #2 Info : 30M x 0.32mm x 0.25µm

Compound	RT#1	RT#2	Resp#1	Resp#2	ng/ml	ng/ml

System Monitoring Compounds						
1) SA Tetrachlo...	5.181	4.328	481.5E6	177.3E6	25.762	19.649
2) SA Decachlor...	11.305	9.740	181.1E6	142.9E6	19.053	19.510

Target Compounds

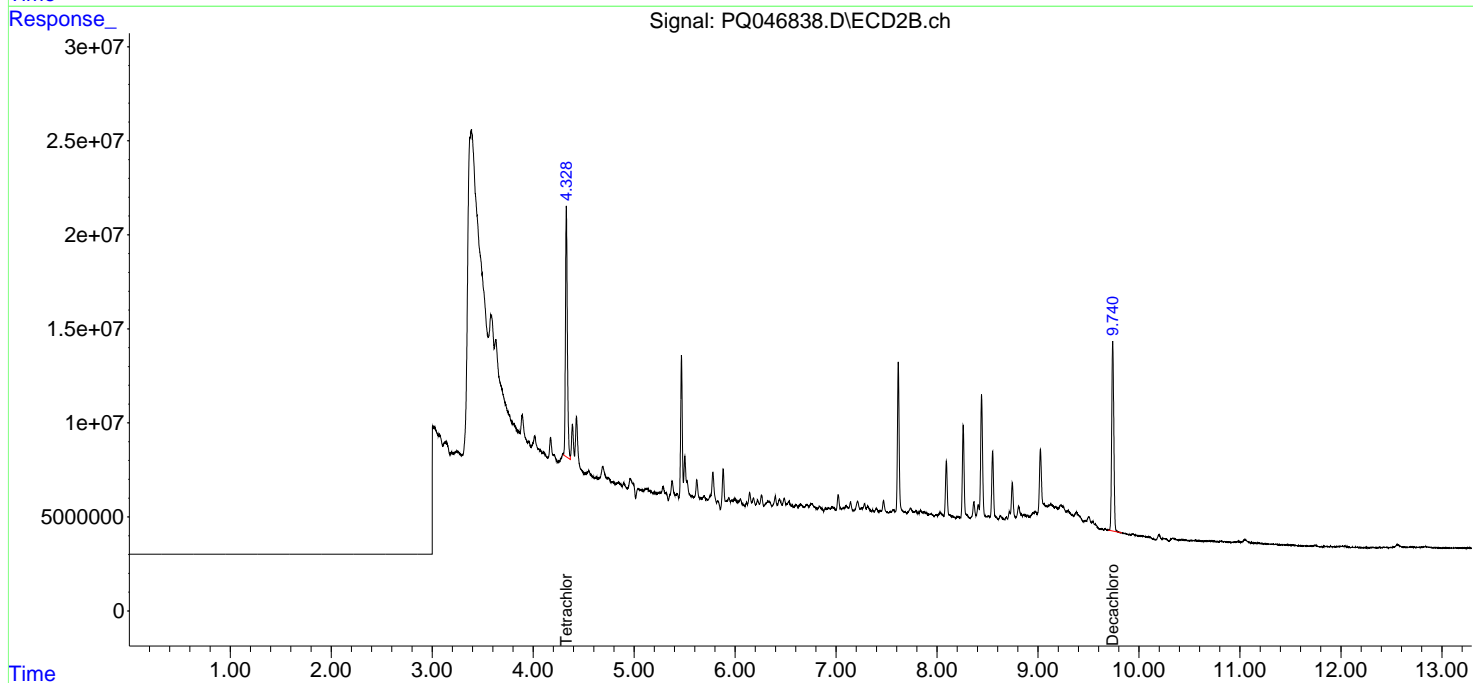
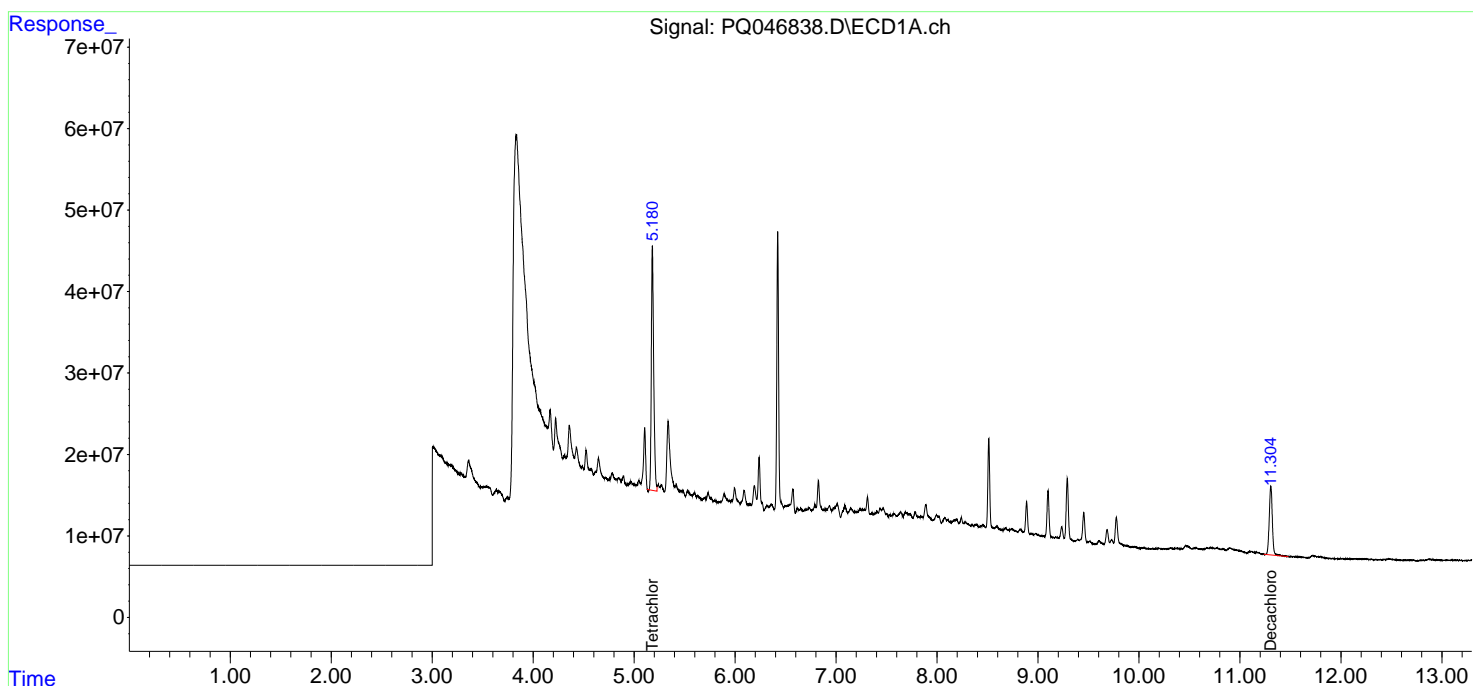
(f)=RT Delta > 1/2 Window (#)=Amounts differ by > 25% (m)=manual int.

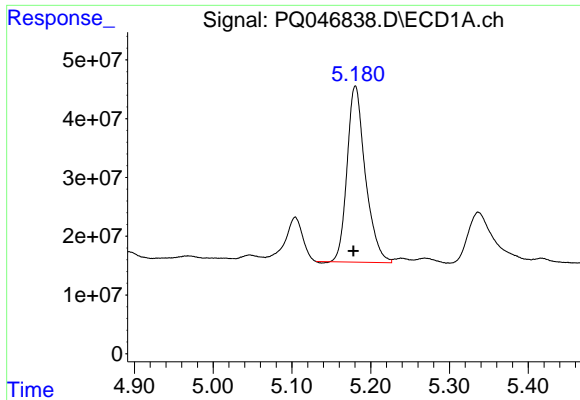
Data Path : Z:\pestpcbsrv\HPCHEM1\ECD_Q\Data\PQ031020\
 Data File : PQ046838.D
 Signal(s) : Signal #1: ECD1A.ch Signal #2: ECD2B.ch
 Acq On : 10 Mar 2020 13:06
 Operator : AJ\MA
 Sample : L1841-22
 Misc :
 ALS Vial : 17 Sample Multiplier: 1

Instrument :
 ECD_Q
 ClientSampleId :
 S-ROOF-B

Integration File signal 1: autoint1.e
 Integration File signal 2: autoint2.e
 Quant Time: Mar 10 13:53:26 2020
 Quant Method : Z:\pestpcbsrv\HPCHEM1\ECD_Q\Method\PQ030920.M
 Quant Title : GC EXTRACTABLES
 QLast Update : Tue Mar 10 04:56:12 2020
 Response via : Initial Calibration
 Integrator: ChemStation

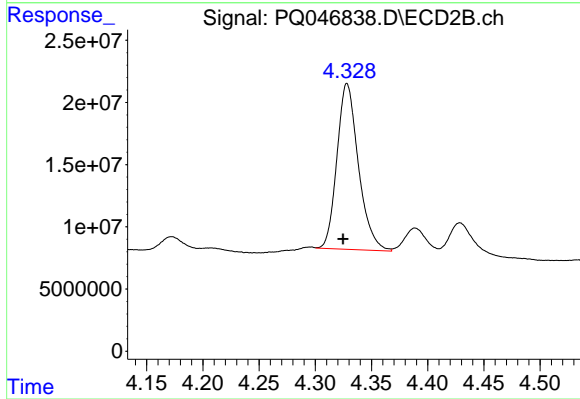
Volume Inj. : 2 µl
 Signal #1 Phase : ZB-MR1 Signal #2 Phase: ZB-MR2
 Signal #1 Info : 30Mx0.32mmx 0.50µm Signal #2 Info : 30M x 0.32mm x 0.25µm



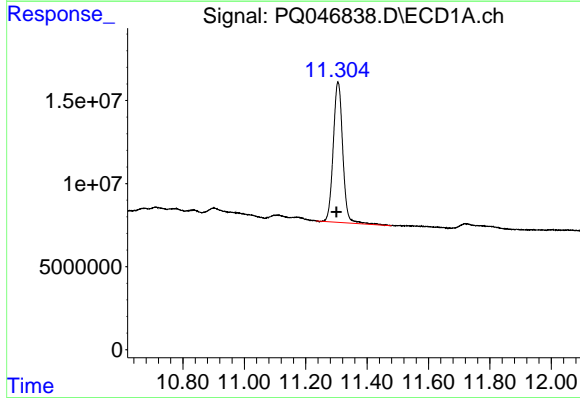


#1 Tetrachloro-m-xylene
 R.T.: 5.181 min
 Delta R.T.: 0.003 min
 Response: 481457727
 Conc: 25.76 ng/ml

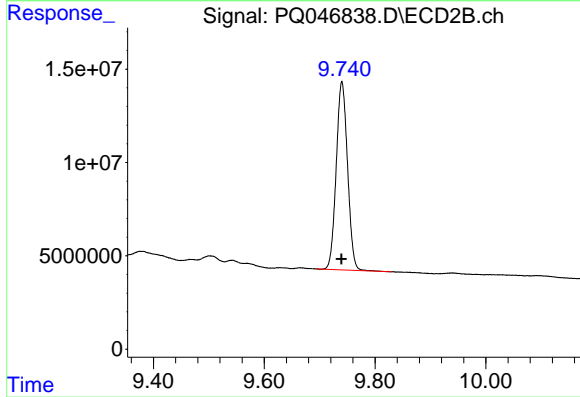
Instrument :
 ECD_Q
 ClientSampled :
 S-ROOF-B



#1 Tetrachloro-m-xylene
 R.T.: 4.328 min
 Delta R.T.: 0.003 min
 Response: 177263435
 Conc: 19.65 ng/ml



#2 Decachlorobiphenyl
 R.T.: 11.305 min
 Delta R.T.: 0.006 min
 Response: 181124927
 Conc: 19.05 ng/ml



#2 Decachlorobiphenyl
 R.T.: 9.740 min
 Delta R.T.: 0.000 min
 Response: 142889774
 Conc: 19.51 ng/ml