

Data Path : Z:\pestpcbsrv\HPCHEM1\ECD\_Q\Data\PQ031020\  
 Data File : PQ046867.D  
 Signal(s) : Signal #1: ECD1A.ch Signal #2: ECD2B.ch  
 Acq On : 10 Mar 2020 22:40  
 Operator : AJ\MA  
 Sample : AR1660CCC500  
 Misc :  
 ALS Vial : 3 Sample Multiplier: 1

Instrument :  
 ECD\_Q  
 ClientSampleId :  
 AR1660CCC500

Integration File signal 1: autoint1.e  
 Integration File signal 2: autoint2.e  
 Quant Time: Mar 11 04:12:30 2020  
 Quant Method : Z:\pestpcbsrv\HPCHEM1\ECD\_Q\Method\PQ030920.M  
 Quant Title : GC EXTRACTABLES  
 QLast Update : Tue Mar 10 04:56:12 2020  
 Response via : Initial Calibration  
 Integrator: ChemStation

Volume Inj. : 2 µl  
 Signal #1 Phase : ZB-MR1 Signal #2 Phase: ZB-MR2  
 Signal #1 Info : 30Mx0.32mmx 0.50µ Signal #2 Info : 30M x 0.32mm x 0.25µm

Compound	RT#1	RT#2	Resp#1	Resp#2	ng/ml	ng/ml
-----						
System Monitoring Compounds						
1) SA Tetrachlo...	5.177	4.323	1091.5E6	308.4E6	58.407	34.186 #
2) SA Decachlor...	11.300	9.736	442.6E6	171.4E6	46.562	23.403 #
Target Compounds						
3) L1 AR-1016-1	6.493	5.605	335.8E6	99197329	494.396	304.900 #
4) L1 AR-1016-2	6.517	5.625	502.8E6	141.7E6	504.183	300.890 #
5) L1 AR-1016-3	6.584	5.822	290.9E6	70461797	493.579	292.812 #
6) L1 AR-1016-4	6.691	5.869	245.8E6	53831972	494.974	274.541 #
7) L1 AR-1016-5	7.006	6.104	214.4E6	84888173	456.625	327.141 #
31) L7 AR-1260-1	8.183	7.205	338.9E6	110.7E6	482.193	230.885 #
32) L7 AR-1260-2	8.448	7.399	455.2E6	130.3E6	505.273	225.931 #
33) L7 AR-1260-3	8.815	7.560	351.2E6	120.8E6	510.625	226.976 #
34) L7 AR-1260-4	9.052	8.044	314.8E6	97187105	493.363	234.110 #
35) L7 AR-1260-5	9.390	8.290	683.3E6	244.8E6	520.558	241.106 #
-----						

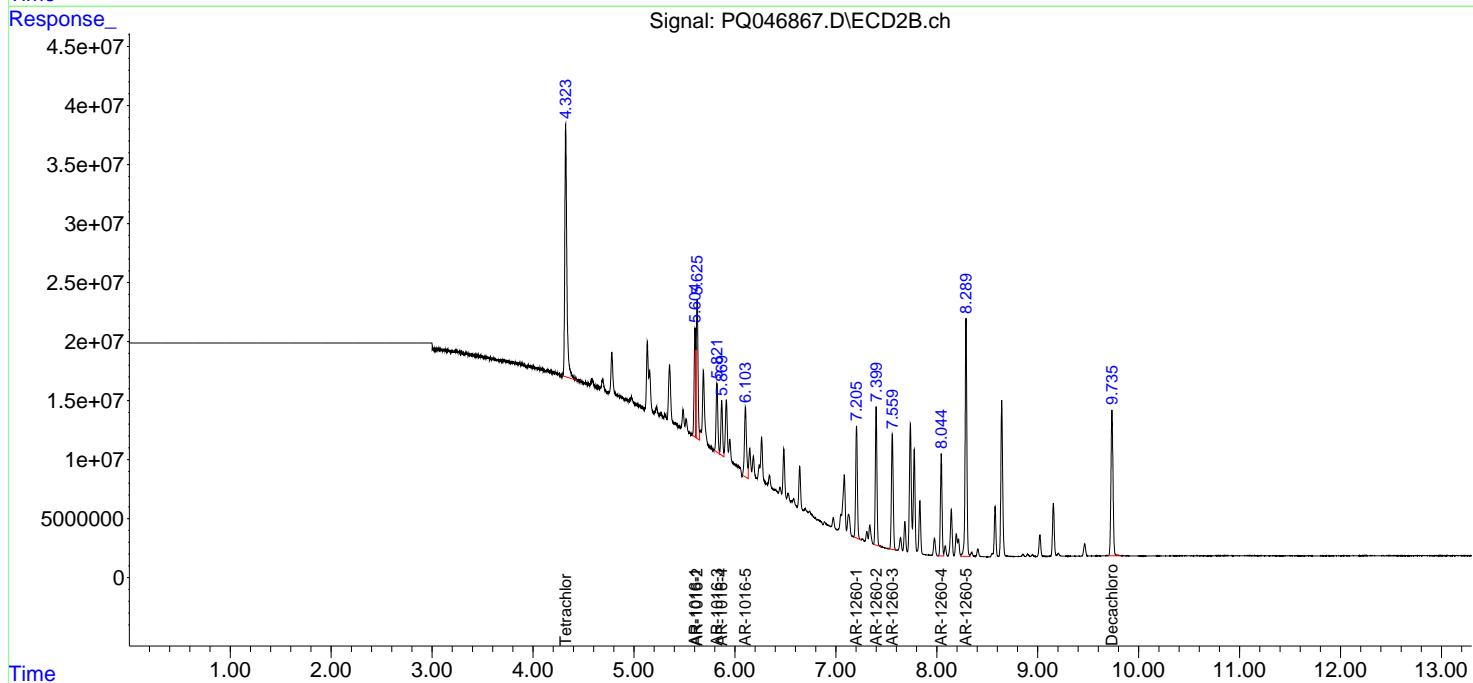
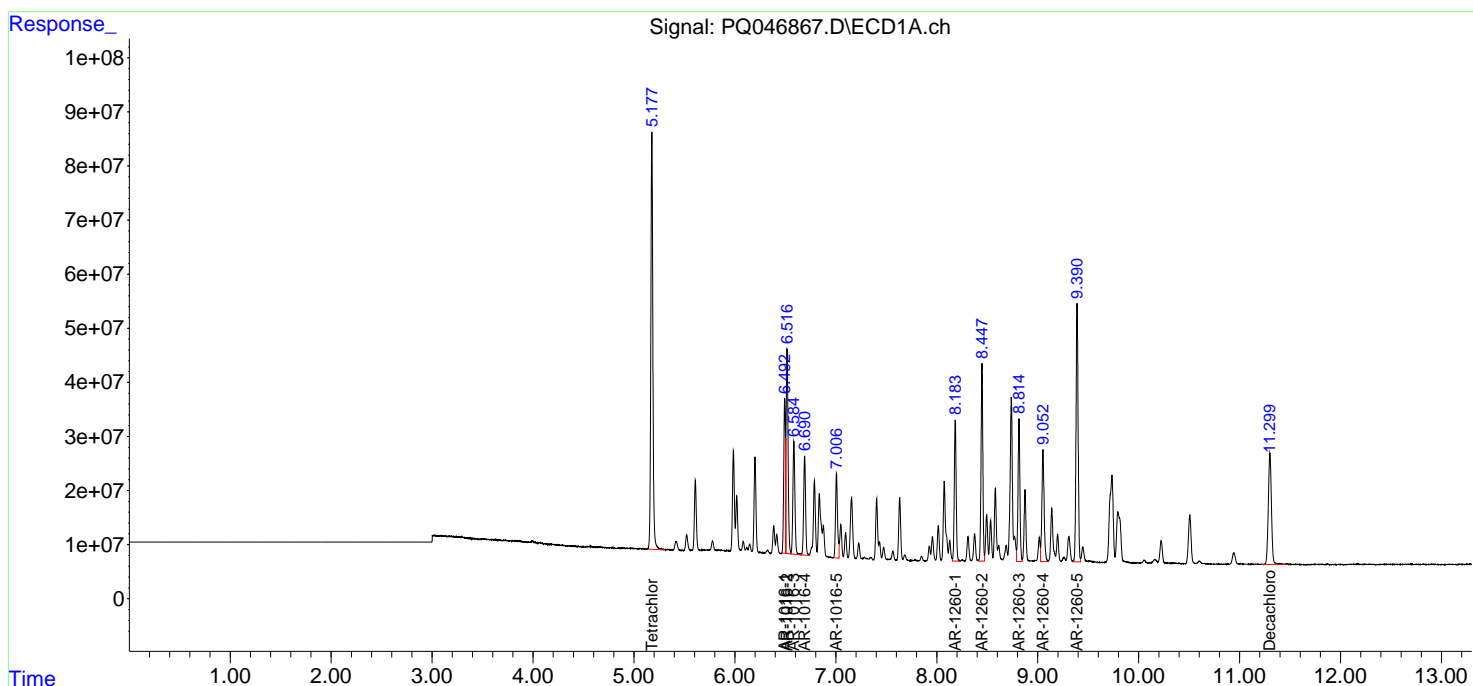
(f)=RT Delta > 1/2 Window (#)=Amounts differ by > 25% (m)=manual int.

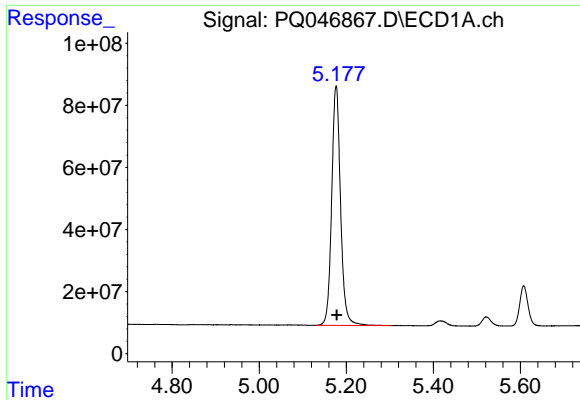
Data Path : Z:\pestpcbsrv\HPCHEM1\ECD\_Q\Data\PQ031020\  
 Data File : PQ046867.D  
 Signal(s) : Signal #1: ECD1A.ch Signal #2: ECD2B.ch  
 Acq On : 10 Mar 2020 22:40  
 Operator : AJ\MA  
 Sample : AR1660CCC500  
 Misc :  
 ALS Vial : 3 Sample Multiplier: 1

Instrument :  
 ECD\_Q  
 ClientSampled :  
 AR1660CCC500

Integration File signal 1: autoint1.e  
 Integration File signal 2: autoint2.e  
 Quant Time: Mar 11 04:12:30 2020  
 Quant Method : Z:\pestpcbsrv\HPCHEM1\ECD\_Q\Method\PQ030920.M  
 Quant Title : GC EXTRACTABLES  
 QLast Update : Tue Mar 10 04:56:12 2020  
 Response via : Initial Calibration  
 Integrator: ChemStation

Volume Inj. : 2 µl  
 Signal #1 Phase : ZB-MR1 Signal #2 Phase: ZB-MR2  
 Signal #1 Info : 30Mx0.32mmx 0.50µ Signal #2 Info : 30M x 0.32mm x 0.25µm

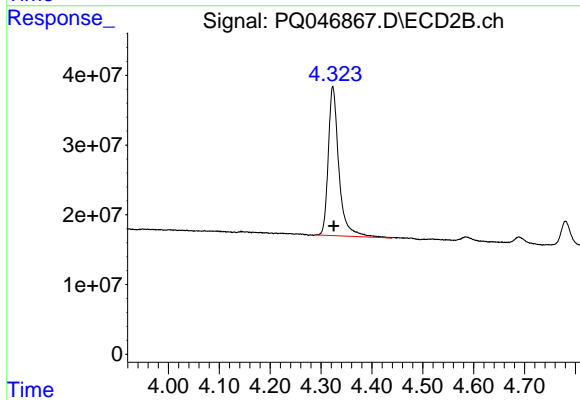




#1 Tetrachloro-m-xylene

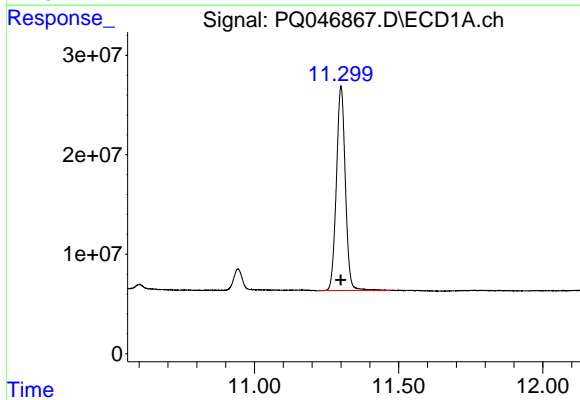
R.T.: 5.177 min  
Delta R.T.: -0.001 min  
Response: 1091533563  
Conc: 58.41 ng/ml

Instrument :  
ECD\_Q  
ClientSampleId :  
AR1660CCC500



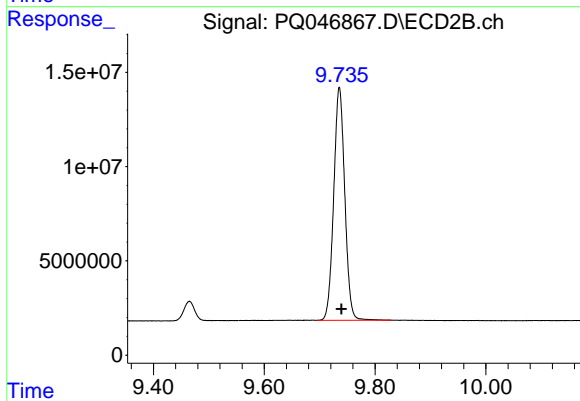
#1 Tetrachloro-m-xylene

R.T.: 4.323 min  
Delta R.T.: -0.002 min  
Response: 308416412  
Conc: 34.19 ng/ml



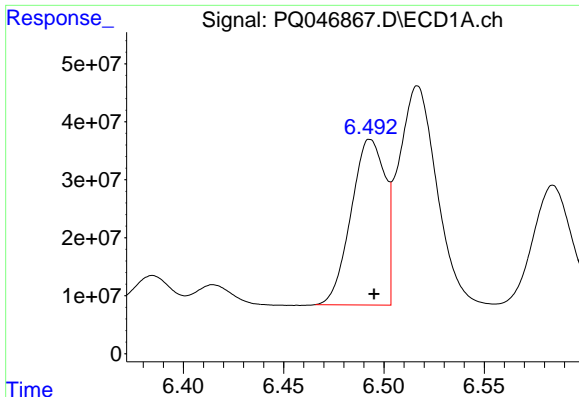
#2 Decachlorobiphenyl

R.T.: 11.300 min  
Delta R.T.: 0.000 min  
Response: 442646798  
Conc: 46.56 ng/ml



#2 Decachlorobiphenyl

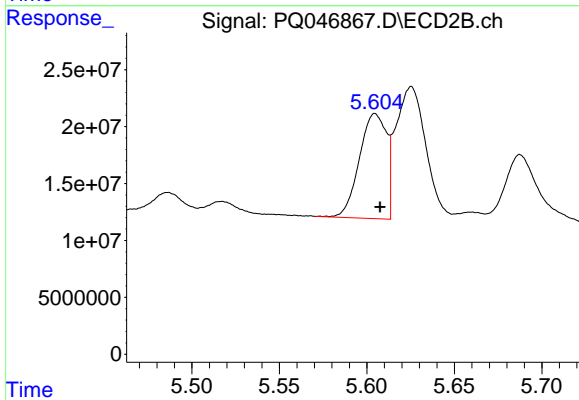
R.T.: 9.736 min  
Delta R.T.: -0.004 min  
Response: 171397979  
Conc: 23.40 ng/ml



#3 AR-1016-1

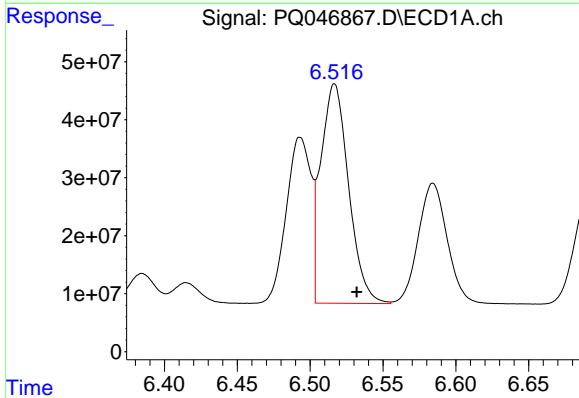
R.T.: 6.493 min  
 Delta R.T.: -0.002 min  
 Response: 335800605  
 Conc: 494.40 ng/ml

Instrument :  
 ECD\_Q  
 ClientSampleId :  
 AR1660CCC500



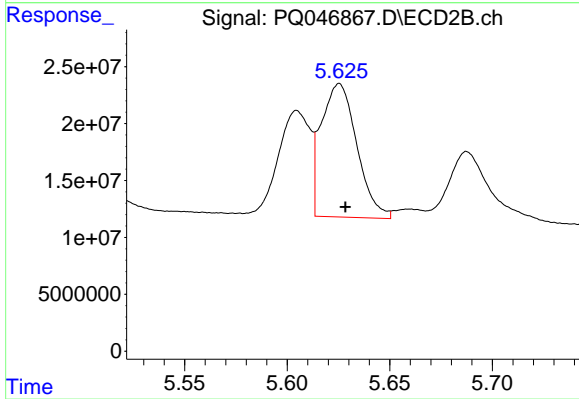
#3 AR-1016-1

R.T.: 5.605 min  
 Delta R.T.: -0.003 min  
 Response: 99197329  
 Conc: 304.90 ng/ml



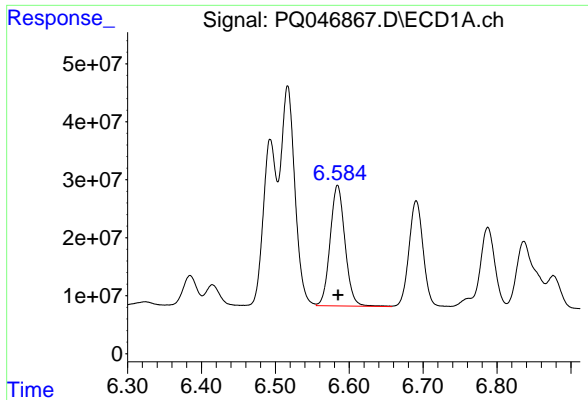
#4 AR-1016-2

R.T.: 6.517 min  
 Delta R.T.: -0.015 min  
 Response: 502842789  
 Conc: 504.18 ng/ml



#4 AR-1016-2

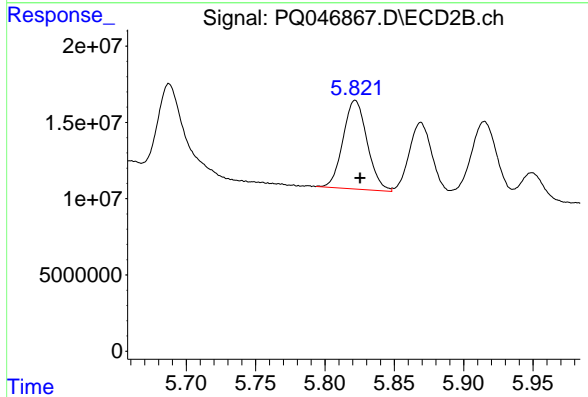
R.T.: 5.625 min  
 Delta R.T.: -0.003 min  
 Response: 141725989  
 Conc: 300.89 ng/ml



#5 AR-1016-3

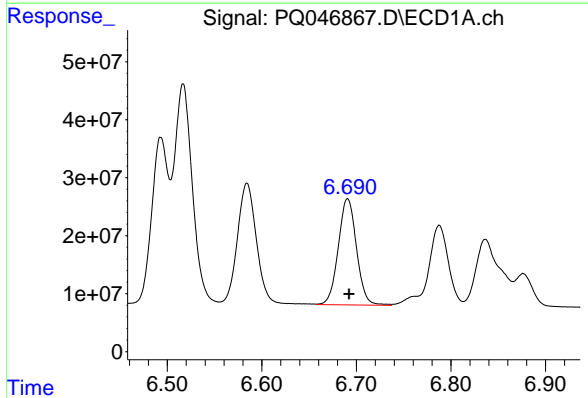
R.T.: 6.584 min  
 Delta R.T.: 0.000 min  
 Response: 290927860  
 Conc: 493.58 ng/ml

Instrument :  
 ECD\_Q  
 ClientSampleId :  
 AR1660CCC500



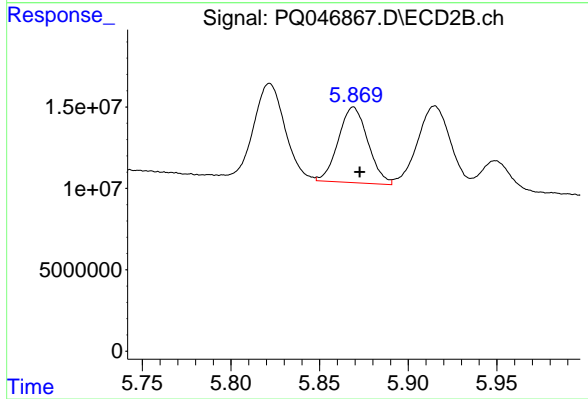
#5 AR-1016-3

R.T.: 5.822 min  
 Delta R.T.: -0.003 min  
 Response: 70461797  
 Conc: 292.81 ng/ml



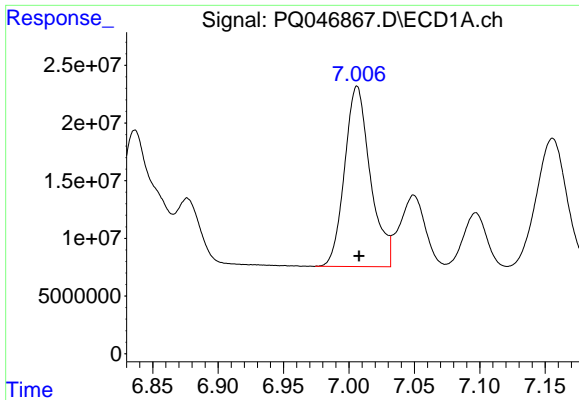
#6 AR-1016-4

R.T.: 6.691 min  
 Delta R.T.: -0.001 min  
 Response: 245844264  
 Conc: 494.97 ng/ml



#6 AR-1016-4

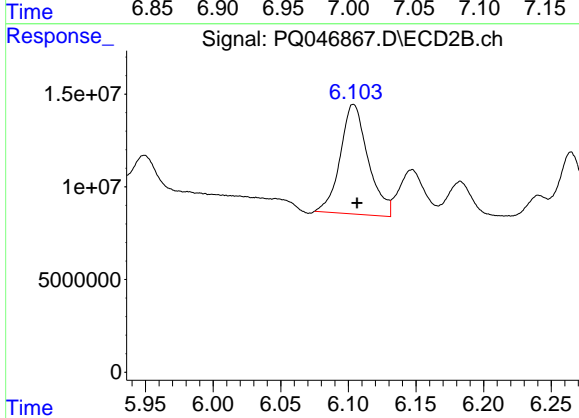
R.T.: 5.869 min  
 Delta R.T.: -0.004 min  
 Response: 53831972  
 Conc: 274.54 ng/ml



#7 AR-1016-5

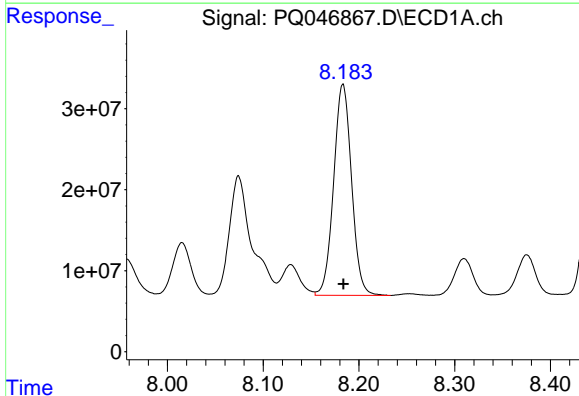
R.T.: 7.006 min  
 Delta R.T.: -0.002 min  
 Response: 214402062  
 Conc: 456.63 ng/ml

Instrument :  
 ECD\_Q  
 ClientSampleId :  
 AR1660CCC500



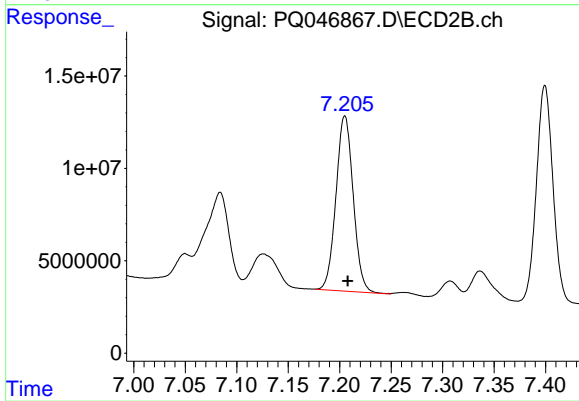
#7 AR-1016-5

R.T.: 6.104 min  
 Delta R.T.: -0.003 min  
 Response: 84888173  
 Conc: 327.14 ng/ml



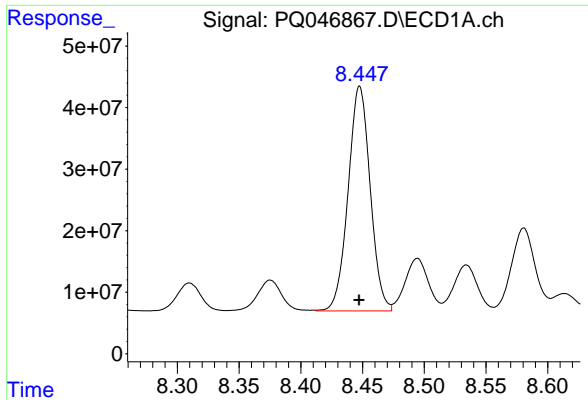
#31 AR-1260-1

R.T.: 8.183 min  
 Delta R.T.: 0.000 min  
 Response: 338913417  
 Conc: 482.19 ng/ml



#31 AR-1260-1

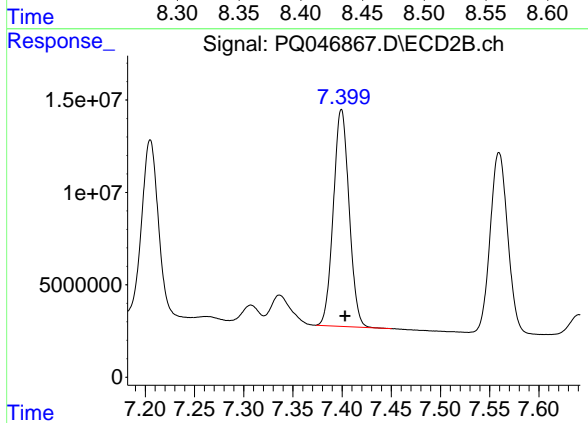
R.T.: 7.205 min  
 Delta R.T.: -0.003 min  
 Response: 110689538  
 Conc: 230.88 ng/ml



#32 AR-1260-2

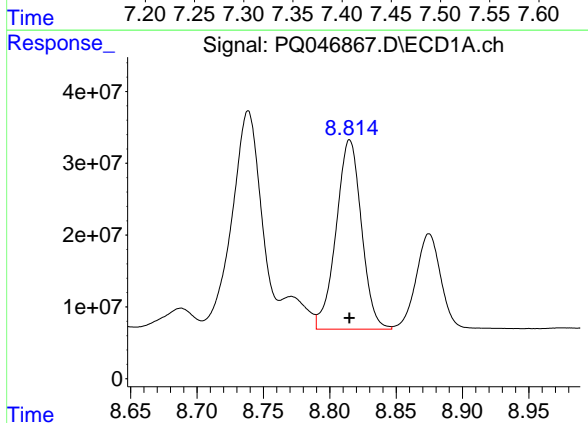
R.T.: 8.448 min  
 Delta R.T.: 0.000 min  
 Response: 455242730  
 Conc: 505.27 ng/ml

Instrument :  
 ECD\_Q  
 ClientSampleId :  
 AR1660CCC500



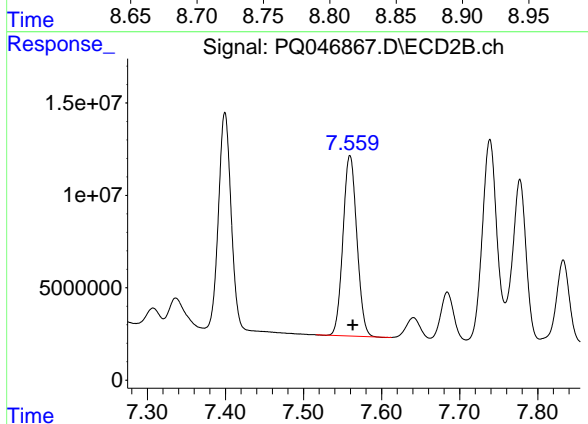
#32 AR-1260-2

R.T.: 7.399 min  
 Delta R.T.: -0.004 min  
 Response: 130284767  
 Conc: 225.93 ng/ml



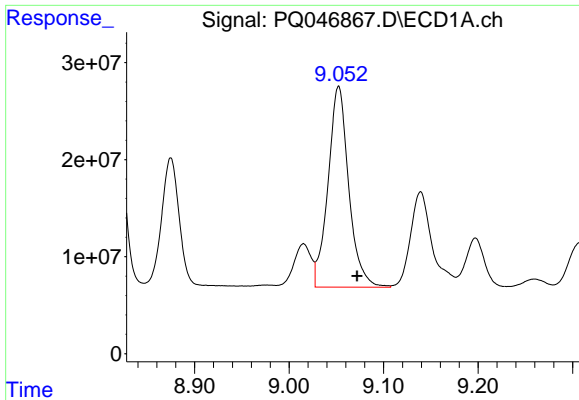
#33 AR-1260-3

R.T.: 8.815 min  
 Delta R.T.: 0.000 min  
 Response: 351243910  
 Conc: 510.62 ng/ml



#33 AR-1260-3

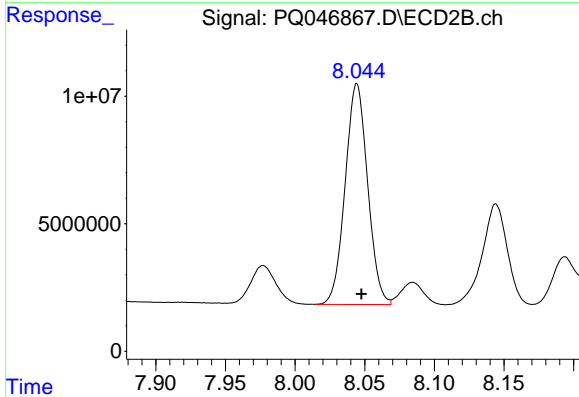
R.T.: 7.560 min  
 Delta R.T.: -0.004 min  
 Response: 120763472  
 Conc: 226.98 ng/ml



#34 AR-1260-4

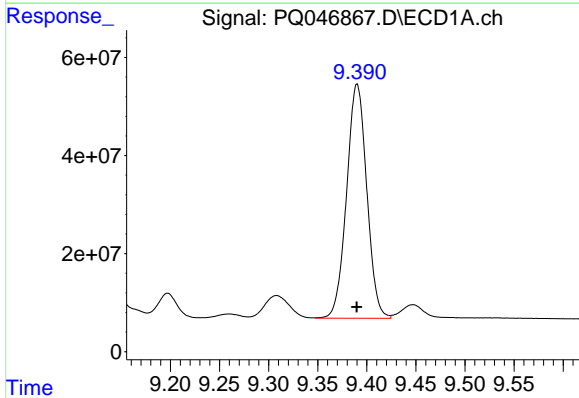
R.T.: 9.052 min  
 Delta R.T.: -0.020 min  
 Response: 314818362  
 Conc: 493.36 ng/ml

Instrument :  
 ECD\_Q  
 ClientSampleId :  
 AR1660CCC500



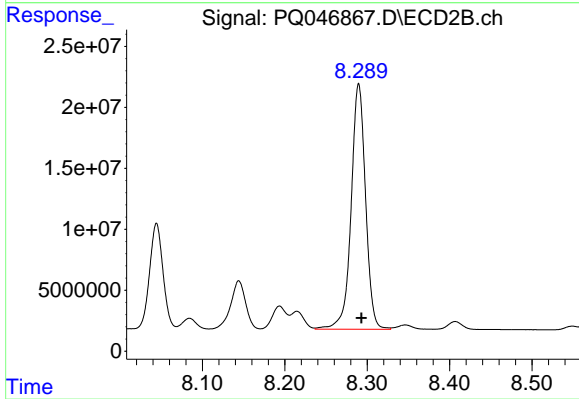
#34 AR-1260-4

R.T.: 8.044 min  
 Delta R.T.: -0.003 min  
 Response: 97187105  
 Conc: 234.11 ng/ml



#35 AR-1260-5

R.T.: 9.390 min  
 Delta R.T.: 0.000 min  
 Response: 683251259  
 Conc: 520.56 ng/ml



#35 AR-1260-5

R.T.: 8.290 min  
 Delta R.T.: -0.003 min  
 Response: 244805728  
 Conc: 241.11 ng/ml