

Data Path : Z:\pestpcbsrv\HPCHEM1\ECD_Q\Data\PQ031920\
 Data File : PQ047060.D
 Signal(s) : Signal #1: ECD1A.ch Signal #2: ECD2B.ch
 Acq On : 19 Mar 2020 14:26
 Operator : AJ\MA
 Sample : L1965-01
 Misc :
 ALS Vial : 12 Sample Multiplier: 1

Instrument :
 ECD_Q
 ClientSampled :

Integration File signal 1: autoint1.e
 Integration File signal 2: autoint2.e
 Quant Time: Mar 19 16:51:01 2020
 Quant Method : Z:\pestpcbsrv\HPCHEM1\ECD_Q\Method\PQ031720.M
 Quant Title : GC EXTRACTABLES
 QLast Update : Tue Mar 17 15:09:31 2020
 Response via : Initial Calibration
 Integrator: ChemStation

Volume Inj. : 2 µl
 Signal #1 Phase : ZB-MR1 Signal #2 Phase: ZB-MR2
 Signal #1 Info : 30Mx0.32mmx 0.50µ Signal #2 Info : 30M x 0.32mm x 0.25µm

Compound	RT#1	RT#2	Resp#1	Resp#2	ng/ml	ng/ml
System Monitoring Compounds						
1) SA Tetrachlo...	5.119	4.274	428.2E6	66341123	19.153	23.114
2) SA Decachlor...	11.199	9.662	194.2E6	51363897	15.206	15.393
Target Compounds						
3) L1 AR-1016-1	6.455	5.570	5375534	758826	5.893	6.459
4) L1 AR-1016-2	6.455	5.570	5375534	758826	4.157	4.750
5) L1 AR-1016-3	6.455	0.000	5375534	0	7.042	N.D. #
6) L1 AR-1016-4	6.602	0.000	11017255	0	16.590	N.D. #
7) L1 AR-1016-5	6.900	6.047	10664769	624955	16.695	6.846 #
8) L2 AR-1221-1	0.000	4.545	0	758266	N.D.	25.229 #
9) L2 AR-1221-2	5.470	4.633	8888643	1236885	47.940	54.833
10) L2 AR-1221-3	5.584	4.728	12369815	509524	22.195	7.384 #
11) L3 AR-1232-1	5.584	4.728	12369815	509524	31.613	10.698 #
12) L3 AR-1232-2	0.000	5.570	0	758826	N.D.	14.996 #
13) L3 AR-1232-3	6.455	0.000	5375534	0	12.806	N.D. #
14) L3 AR-1232-4	6.602	5.886	11017255	669379	51.111	28.243 #
15) L3 AR-1232-5	6.727	6.047	4133531	624955	28.281	23.228
16) L4 AR-1242-1	6.455	5.570	5375534	758826	9.281	10.120
17) L4 AR-1242-2	6.455	5.570	5375534	758826	6.577	7.507
19) L4 AR-1242-4	6.602	5.886	11017255	669379	25.728	12.601 #
20) L4 AR-1242-5	7.379	6.430	18560929	3654510	39.507	50.753 #
21) L5 AR-1248-1	6.455	5.570	5375534	758826	11.416	12.634
22) L5 AR-1248-2	6.727	0.000	4133531	0	6.425	N.D. #
23) L5 AR-1248-3	6.900	5.886	10664769	669379	14.783	8.379 #
24) L5 AR-1248-4	7.379	6.047	18560929	624955	22.869	6.606 #
25) L5 AR-1248-5	7.379	6.460	18560929	1229784	24.053	11.674 #
26) L6 AR-1254-1	7.351	6.430	18383858	3654510	23.810	24.485
27) L6 AR-1254-2	7.574	6.585	25536250	1320289	21.656	10.280 #
28) L6 AR-1254-3	7.961	7.012	27950504	2228444	23.948	10.489 #
29) L6 AR-1254-4	8.248	7.249	10988141	1042276	11.743	7.693 #
30) L6 AR-1254-5	8.678	7.680	30147151	3792475	35.930	20.642 #
31) L7 AR-1260-1	8.119	7.147	47721281	2589300	45.622	14.804 #
32) L7 AR-1260-2	8.381	7.342	76860859	3075216	55.949	14.271 #
33) L7 AR-1260-3	8.752	7.501	12751937	2697964	11.837	13.415
34) L7 AR-1260-4	8.982	7.986	11897071	1245870	11.926	7.106 #
35) L7 AR-1260-5	9.320	8.232	14657838	3729487	7.052	8.560
36) L8 AR-1262-1	8.752	7.680	12751937	3792475	9.806	35.097 #
37) L8 AR-1262-2	9.320	8.232	14657838	3729487	7.543	9.420
38) L8 AR-1262-3	9.658	8.520	13545543	981657	11.083	6.560 #
39) L8 AR-1262-4	9.737	8.586	9158392	7180456	10.082	25.277 #
40) L8 AR-1262-5	0.000	9.093	0	1329396	N.D.	10.256 #
41) L9 AR-1268-1	9.658	8.520	13545543	981657	6.367	2.280 #
42) L9 AR-1268-2	9.737	8.586	9158392	7180456	5.064	18.306 #

Data Path : Z:\pestpcbsrv\HPCHEM1\ECD_Q\Data\PQ031920\
 Data File : PQ047060.D
 Signal(s) : Signal #1: ECD1A.ch Signal #2: ECD2B.ch
 Acq On : 19 Mar 2020 14:26
 Operator : AJ\MA
 Sample : L1965-01
 Misc :
 ALS Vial : 12 Sample Multiplier: 1

Instrument :
 ECD_Q
 ClientSampleId :

Integration File signal 1: autoint1.e
 Integration File signal 2: autoint2.e
 Quant Time: Mar 19 16:51:01 2020
 Quant Method : Z:\pestpcbsrv\HPCHEM1\ECD_Q\Method\PQ031720.M
 Quant Title : GC EXTRACTABLES
 QLast Update : Tue Mar 17 15:09:31 2020
 Response via : Initial Calibration
 Integrator: ChemStation

Volume Inj. : 2 µl
 Signal #1 Phase : ZB-MR1 Signal #2 Phase: ZB-MR2
 Signal #1 Info : 30Mx0.32mmx 0.50µ Signal #2 Info : 30M x 0.32mm x 0.25µm

	Compound	RT#1	RT#2	Resp#1	Resp#2	ng/ml	ng/ml
43)	L9 AR-1268-3	9.972	8.794	13680646	1377440	9.190	4.326 #
44)	L9 AR-1268-4	0.000	9.093	0	1329396	N.D.	9.564 #
45)	L9 AR-1268-5	10.848	9.396	7829560	1528999	2.088	1.518 #

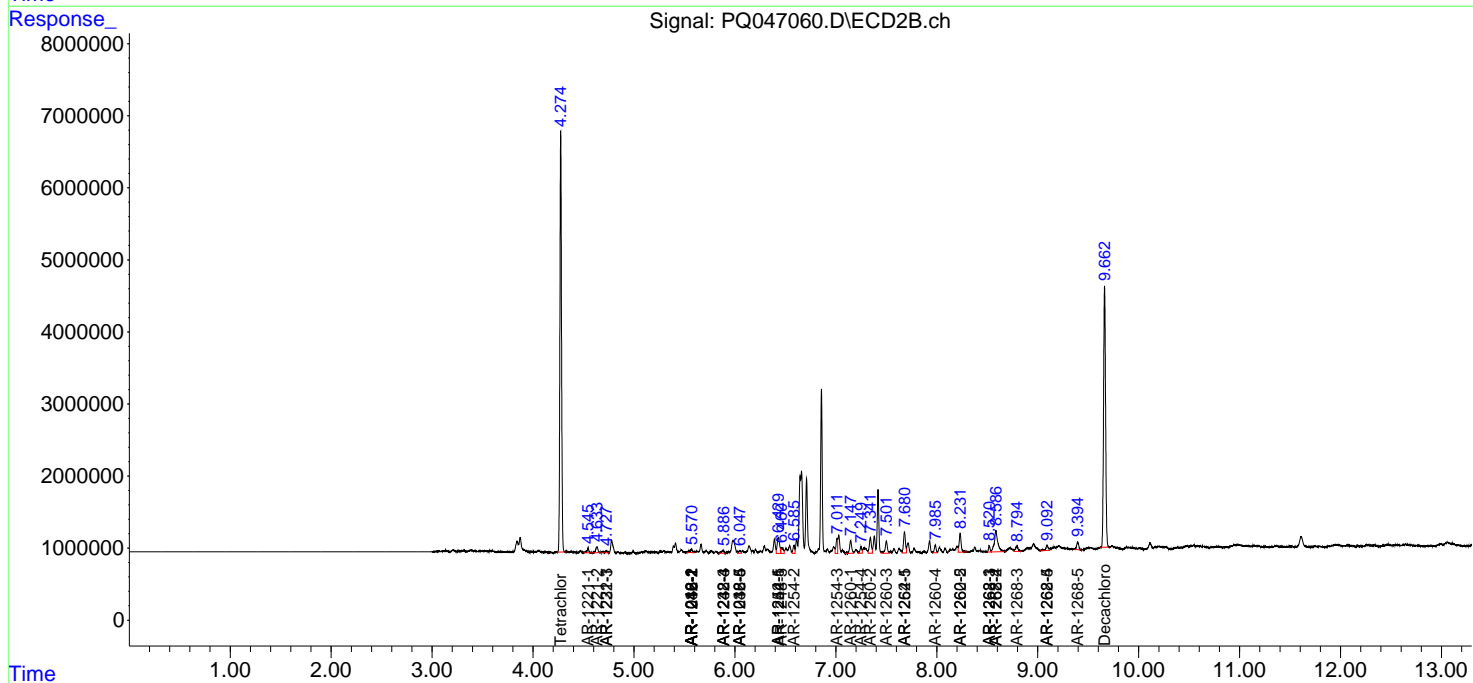
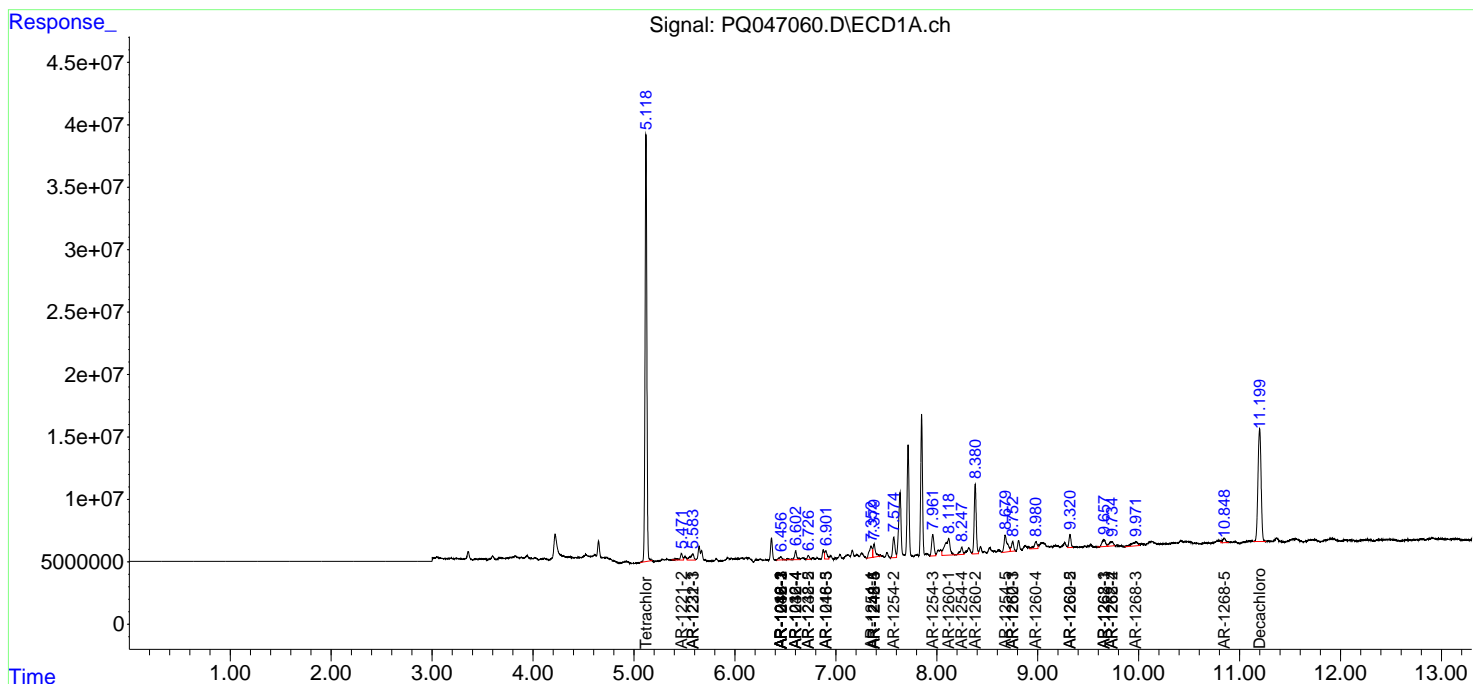
(f)=RT Delta > 1/2 Window (#)=Amounts differ by > 25% (m)=manual int.

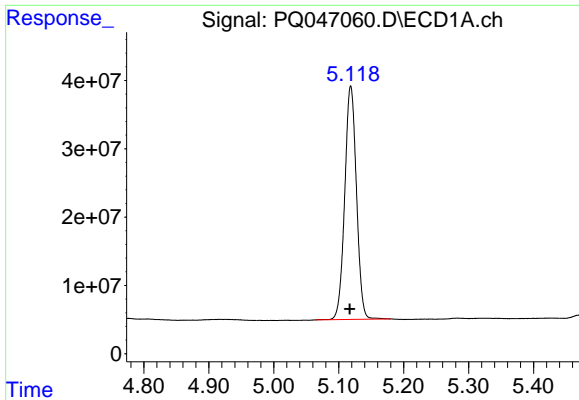
Data Path : Z:\pestpcbsrv\HPCHEM1\ECD_Q\Data\PQ031920\
 Data File : PQ047060.D
 Signal(s) : Signal #1: ECD1A.ch Signal #2: ECD2B.ch
 Acq On : 19 Mar 2020 14:26
 Operator : AJ\MA
 Sample : L1965-01
 Misc :
 ALS Vial : 12 Sample Multiplier: 1

Instrument :
 ECD_Q
 ClientSampled :

Integration File signal 1: autoint1.e
 Integration File signal 2: autoint2.e
 Quant Time: Mar 19 16:51:01 2020
 Quant Method : Z:\pestpcbsrv\HPCHEM1\ECD_Q\Method\PQ031720.M
 Quant Title : GC EXTRACTABLES
 QLast Update : Tue Mar 17 15:09:31 2020
 Response via : Initial Calibration
 Integrator: ChemStation

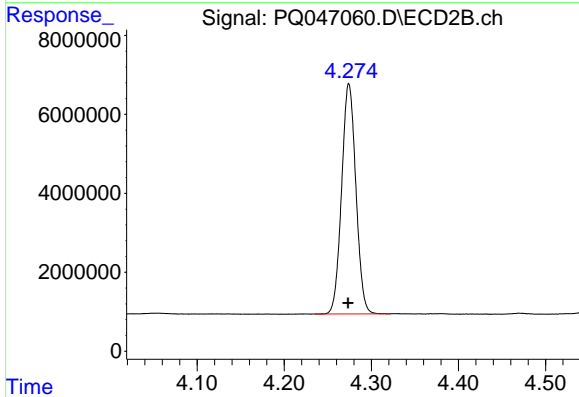
Volume Inj. : 2 µl
 Signal #1 Phase : ZB-MR1 Signal #2 Phase: ZB-MR2
 Signal #1 Info : 30Mx0.32mmx 0.50µ Signal #2 Info : 30M x 0.32mm x 0.25µm



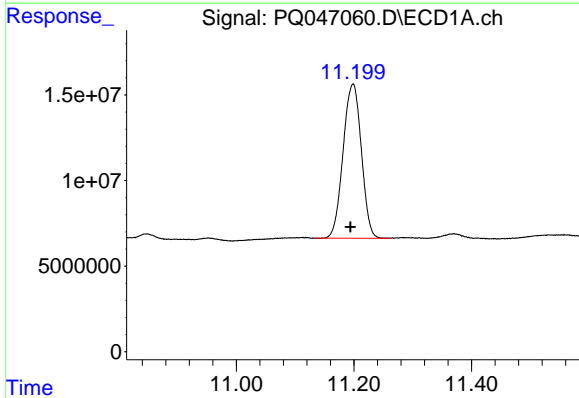


#1 Tetrachloro-m-xylene
 R.T.: 5.119 min
 Delta R.T.: 0.002 min
 Response: 428233157
 Conc: 19.15 ng/ml

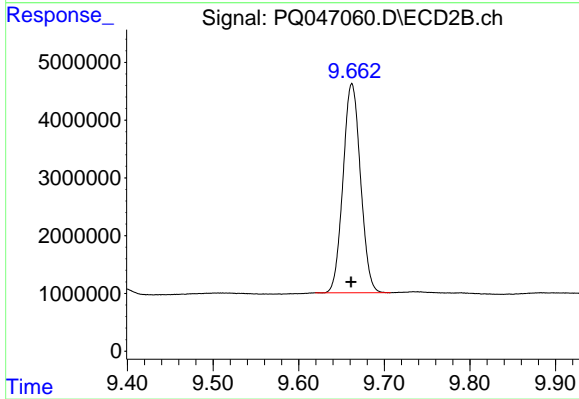
Instrument :
 ECD_Q
 ClientSampled :



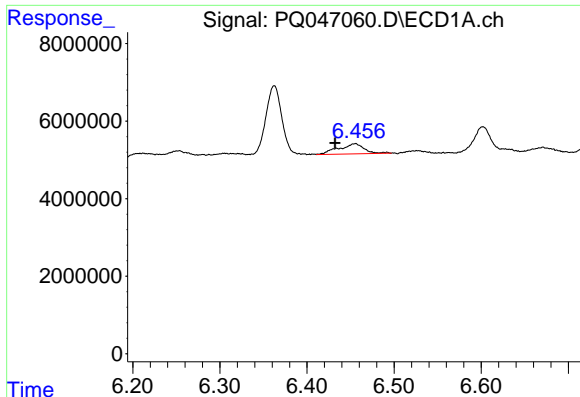
#1 Tetrachloro-m-xylene
 R.T.: 4.274 min
 Delta R.T.: 0.001 min
 Response: 66341123
 Conc: 23.11 ng/ml



#2 Decachlorobiphenyl
 R.T.: 11.199 min
 Delta R.T.: 0.005 min
 Response: 194208768
 Conc: 15.21 ng/ml



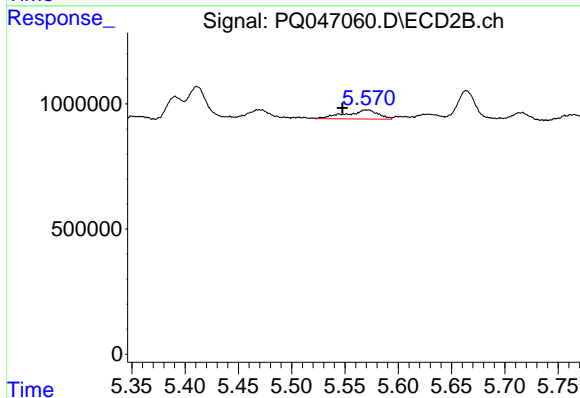
#2 Decachlorobiphenyl
 R.T.: 9.662 min
 Delta R.T.: 0.000 min
 Response: 51363897
 Conc: 15.39 ng/ml



#3 AR-1016-1

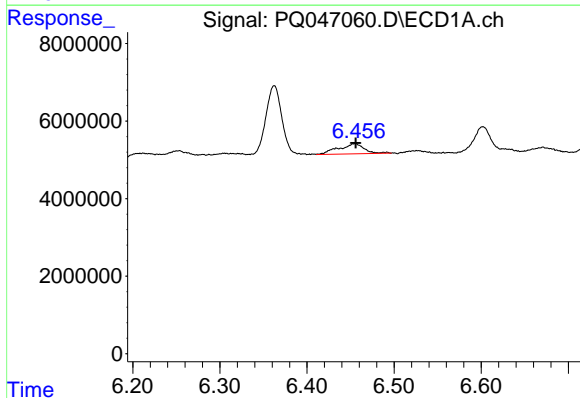
R.T.: 6.455 min
 Delta R.T.: 0.023 min
 Response: 5375534
 Conc: 5.89 ng/ml

Instrument :
 ECD_Q
 ClientSampleId :



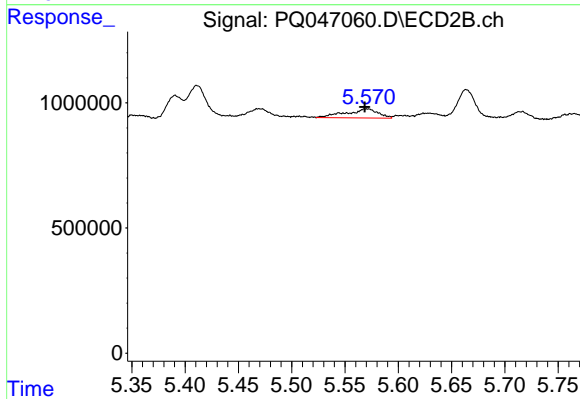
#3 AR-1016-1

R.T.: 5.570 min
 Delta R.T.: 0.023 min
 Response: 758826
 Conc: 6.46 ng/ml



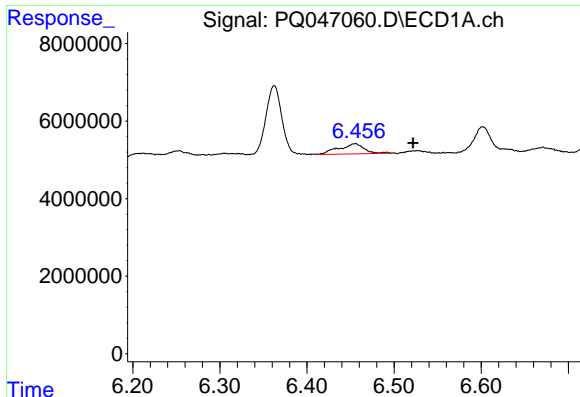
#4 AR-1016-2

R.T.: 6.455 min
 Delta R.T.: 0.000 min
 Response: 5375534
 Conc: 4.16 ng/ml



#4 AR-1016-2

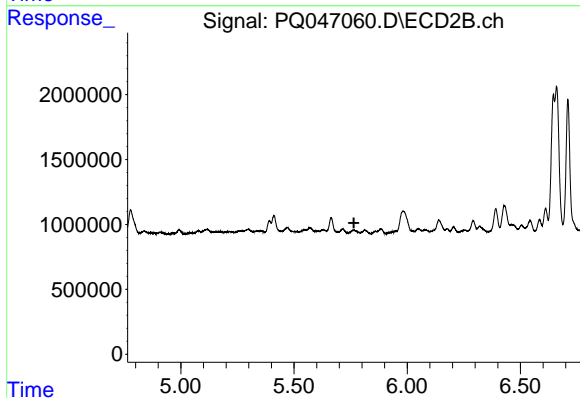
R.T.: 5.570 min
 Delta R.T.: 0.002 min
 Response: 758826
 Conc: 4.75 ng/ml



#5 AR-1016-3

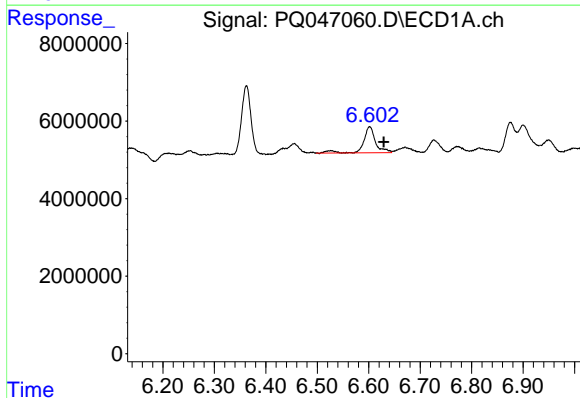
R.T.: 6.455 min
 Delta R.T.: -0.067 min
 Response: 5375534
 Conc: 7.04 ng/ml

Instrument :
 ECD_Q
 ClientSampled :



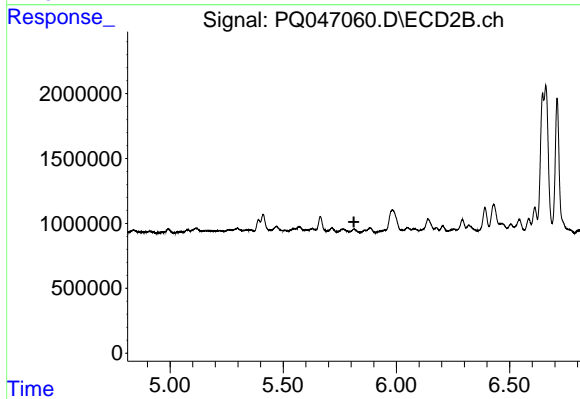
#5 AR-1016-3

R.T.: 0.000 min
 Exp R.T. : 5.764 min
 Response: 0
 Conc: N.D.



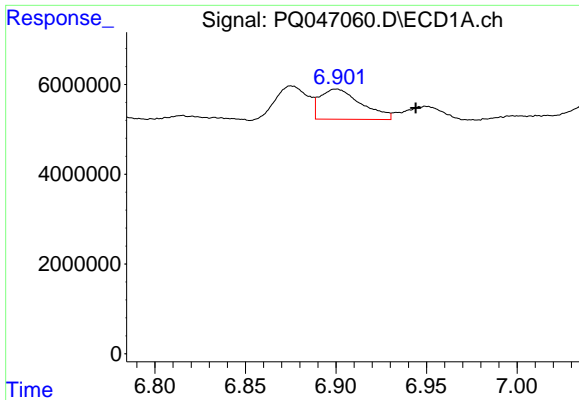
#6 AR-1016-4

R.T.: 6.602 min
 Delta R.T.: -0.027 min
 Response: 11017255
 Conc: 16.59 ng/ml



#6 AR-1016-4

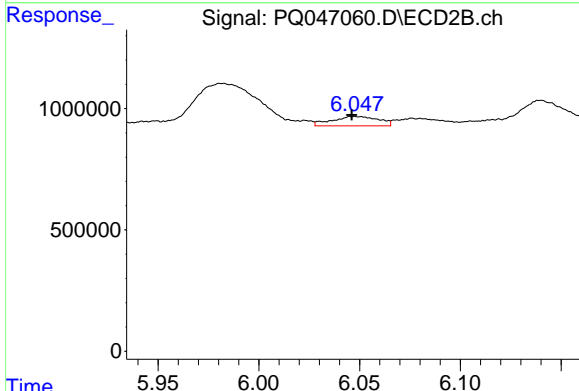
R.T.: 0.000 min
 Exp R.T. : 5.812 min
 Response: 0
 Conc: N.D.



#7 AR-1016-5

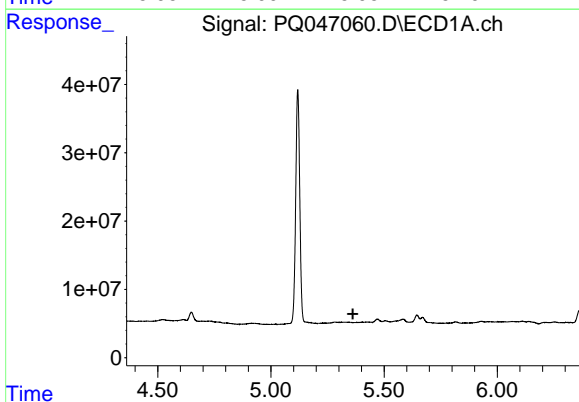
R.T.: 6.900 min
 Delta R.T.: -0.044 min
 Response: 10664769
 Conc: 16.70 ng/ml

Instrument :
 ECD_Q
 ClientSampled :



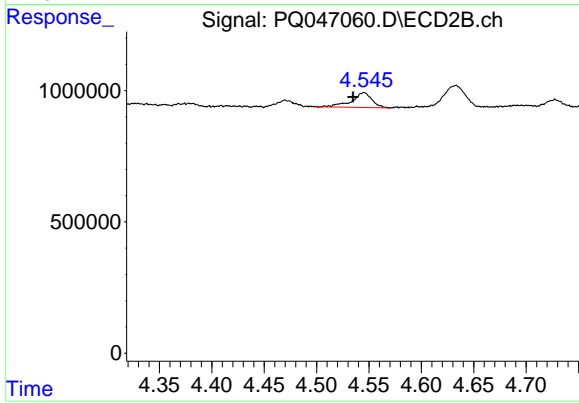
#7 AR-1016-5

R.T.: 6.047 min
 Delta R.T.: 0.001 min
 Response: 624955
 Conc: 6.85 ng/ml



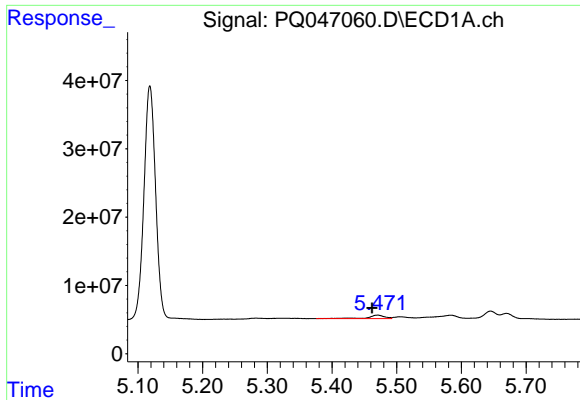
#8 AR-1221-1

R.T.: 0.000 min
 Exp R.T. : 5.362 min
 Response: 0
 Conc: N.D.



#8 AR-1221-1

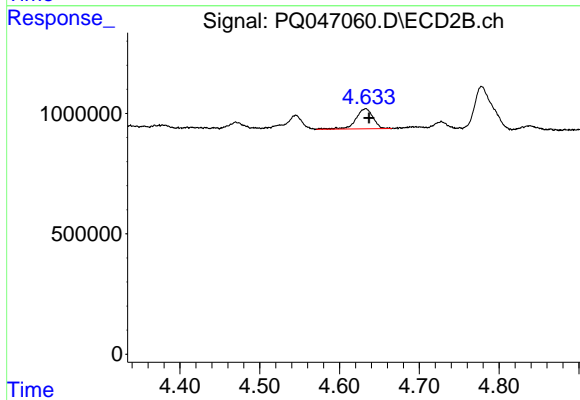
R.T.: 4.545 min
 Delta R.T.: 0.010 min
 Response: 758266
 Conc: 25.23 ng/ml



#9 AR-1221-2

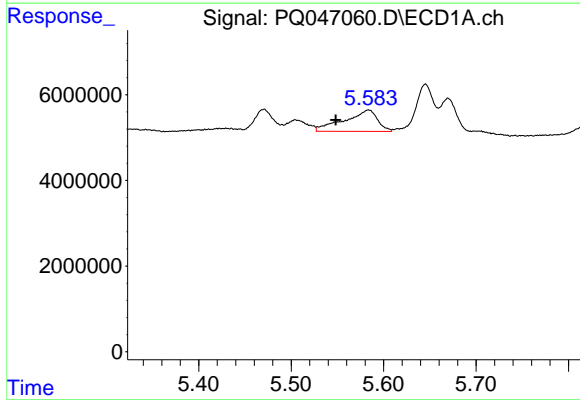
R.T.: 5.470 min
 Delta R.T.: 0.008 min
 Response: 8888643
 Conc: 47.94 ng/ml

Instrument :
 ECD_Q
 ClientSampleId :



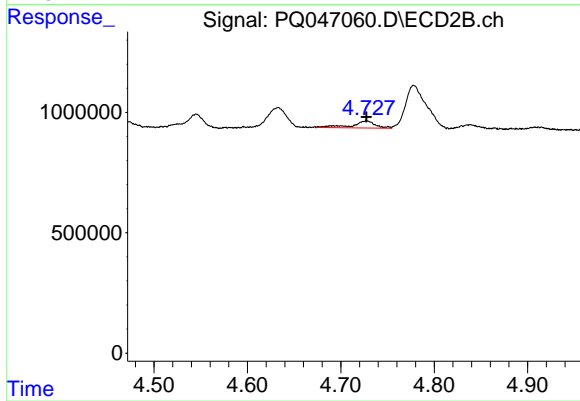
#9 AR-1221-2

R.T.: 4.633 min
 Delta R.T.: -0.004 min
 Response: 1236885
 Conc: 54.83 ng/ml



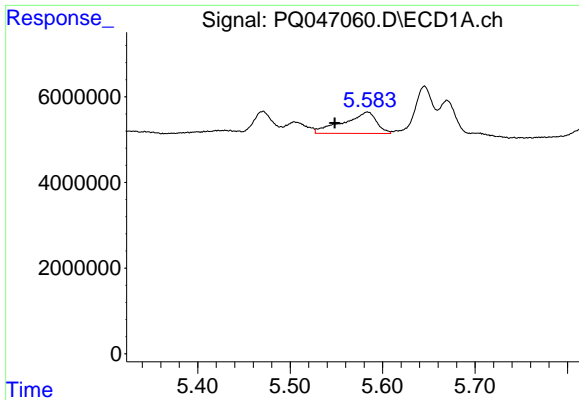
#10 AR-1221-3

R.T.: 5.584 min
 Delta R.T.: 0.036 min
 Response: 12369815
 Conc: 22.19 ng/ml



#10 AR-1221-3

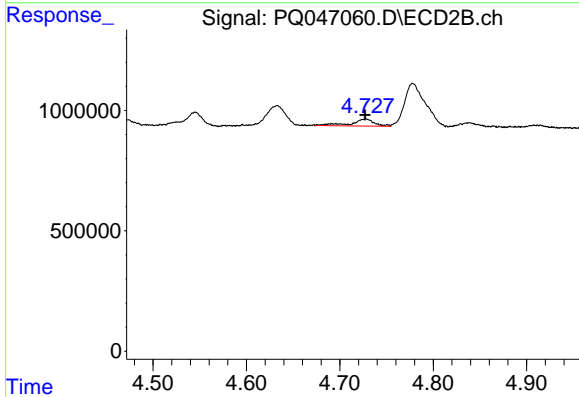
R.T.: 4.728 min
 Delta R.T.: 0.000 min
 Response: 509524
 Conc: 7.38 ng/ml



#11 AR-1232-1

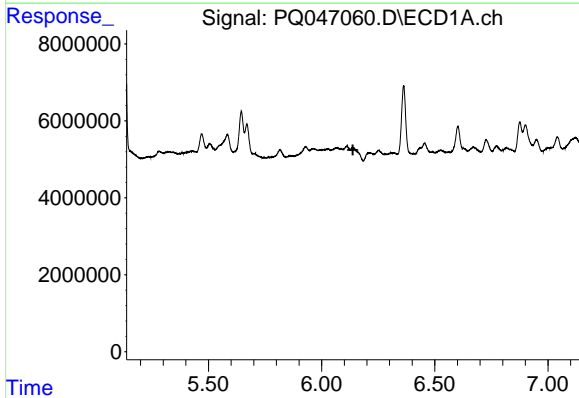
R.T.: 5.584 min
 Delta R.T.: 0.036 min
 Response: 12369815
 Conc: 31.61 ng/ml

Instrument :
 ECD_Q
 ClientSampleId :



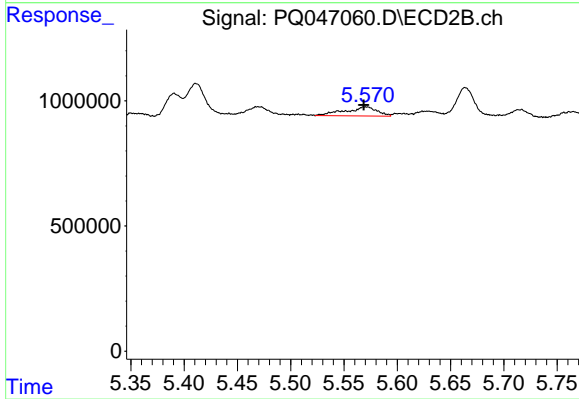
#11 AR-1232-1

R.T.: 4.728 min
 Delta R.T.: 0.000 min
 Response: 509524
 Conc: 10.70 ng/ml



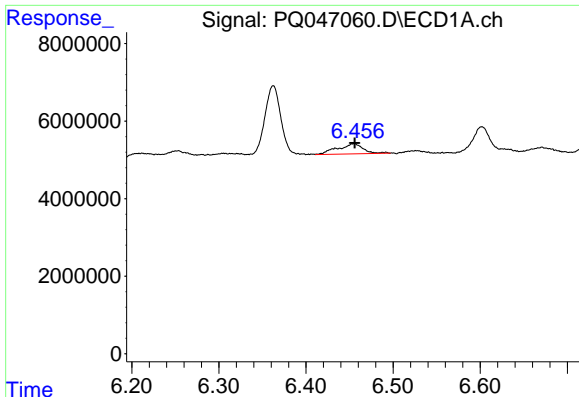
#12 AR-1232-2

R.T.: 0.000 min
 Exp R.T. : 6.138 min
 Response: 0
 Conc: N.D.



#12 AR-1232-2

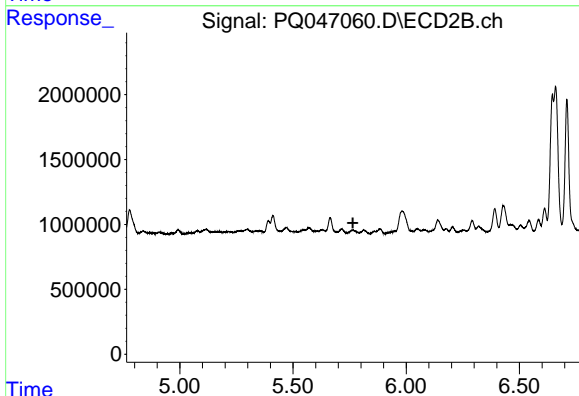
R.T.: 5.570 min
 Delta R.T.: 0.002 min
 Response: 758826
 Conc: 15.00 ng/ml



#13 AR-1232-3

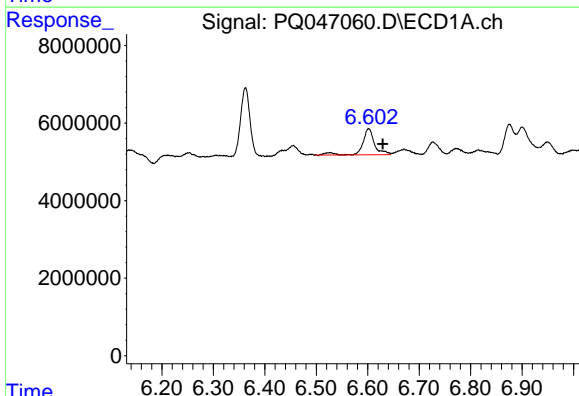
R.T.: 6.455 min
 Delta R.T.: 0.000 min
 Response: 5375534
 Conc: 12.81 ng/ml

Instrument :
 ECD_Q
 ClientSampled :



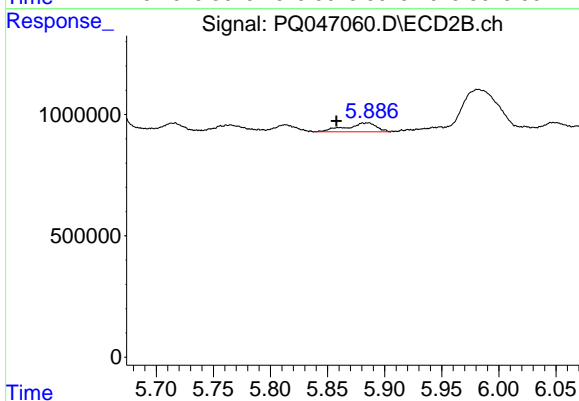
#13 AR-1232-3

R.T.: 0.000 min
 Exp R.T. : 5.764 min
 Response: 0
 Conc: N.D.



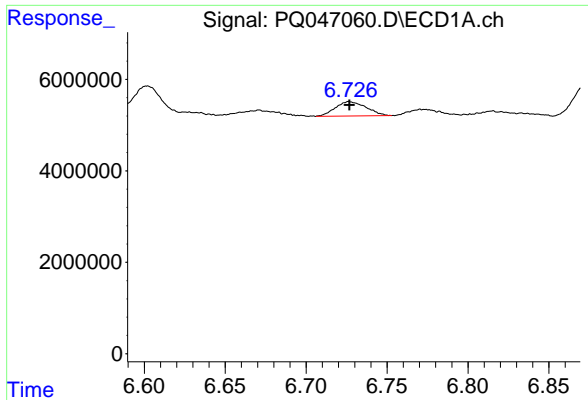
#14 AR-1232-4

R.T.: 6.602 min
 Delta R.T.: -0.027 min
 Response: 11017255
 Conc: 51.11 ng/ml



#14 AR-1232-4

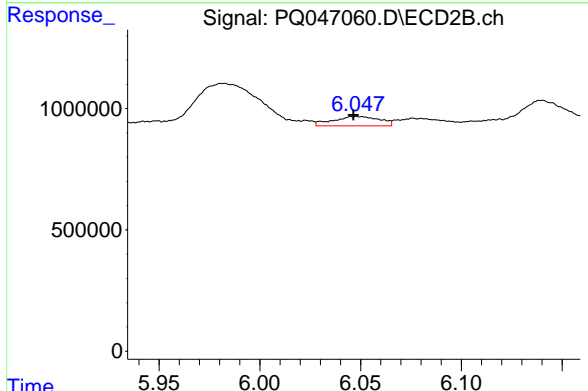
R.T.: 5.886 min
 Delta R.T.: 0.028 min
 Response: 669379
 Conc: 28.24 ng/ml



#15 AR-1232-5

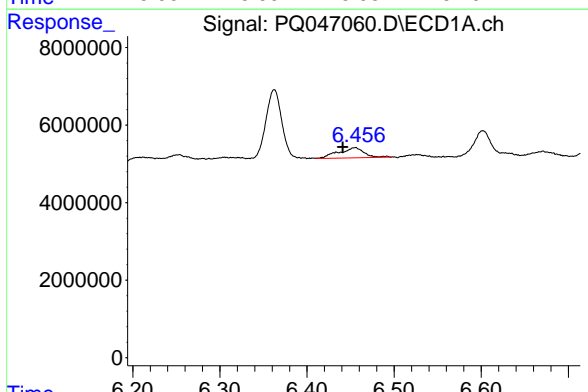
R.T.: 6.727 min
 Delta R.T.: 0.000 min
 Response: 4133531
 Conc: 28.28 ng/ml

Instrument :
 ECD_Q
 ClientSampleId :



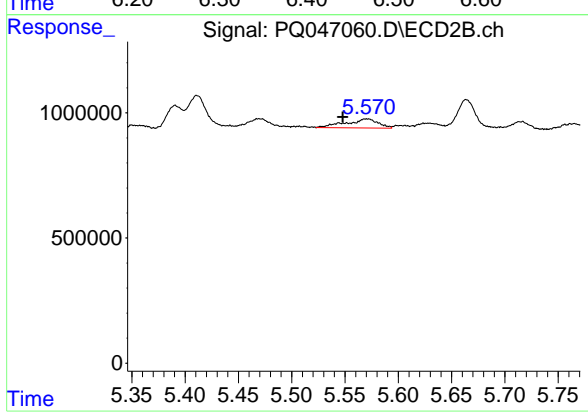
#15 AR-1232-5

R.T.: 6.047 min
 Delta R.T.: 0.001 min
 Response: 624955
 Conc: 23.23 ng/ml



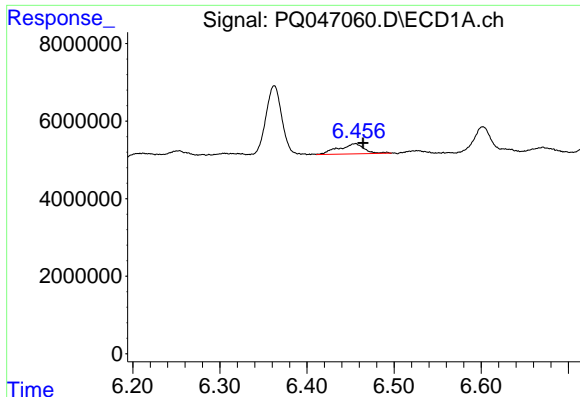
#16 AR-1242-1

R.T.: 6.455 min
 Delta R.T.: 0.014 min
 Response: 5375534
 Conc: 9.28 ng/ml



#16 AR-1242-1

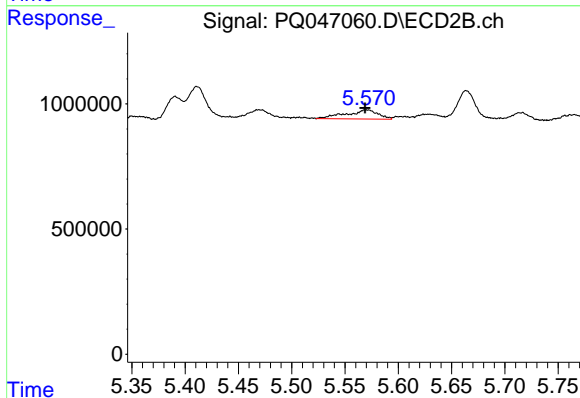
R.T.: 5.570 min
 Delta R.T.: 0.023 min
 Response: 758826
 Conc: 10.12 ng/ml



#17 AR-1242-2

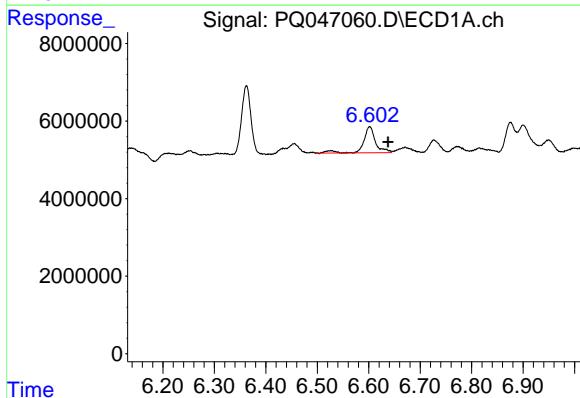
R.T.: 6.455 min
 Delta R.T.: -0.009 min
 Response: 5375534
 Conc: 6.58 ng/ml

Instrument :
 ECD_Q
 ClientSampled :



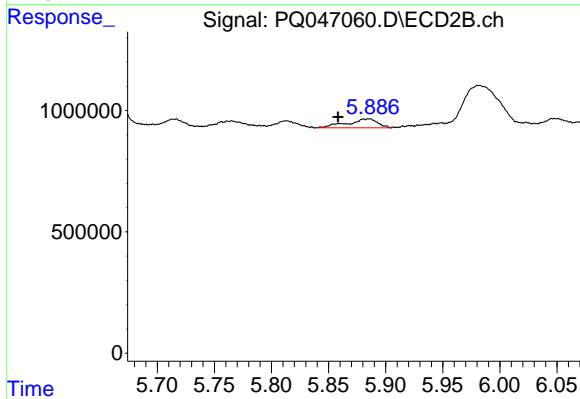
#17 AR-1242-2

R.T.: 5.570 min
 Delta R.T.: 0.002 min
 Response: 758826
 Conc: 7.51 ng/ml



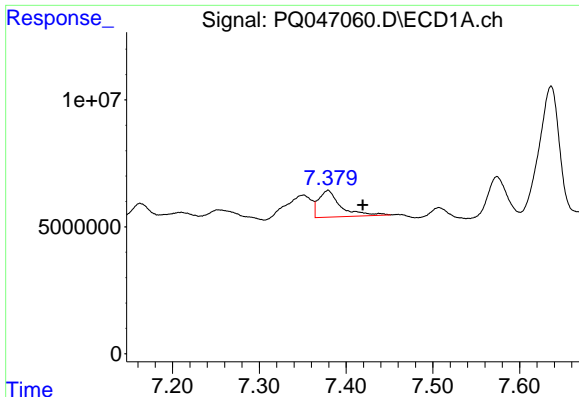
#19 AR-1242-4

R.T.: 6.602 min
 Delta R.T.: -0.036 min
 Response: 11017255
 Conc: 25.73 ng/ml



#19 AR-1242-4

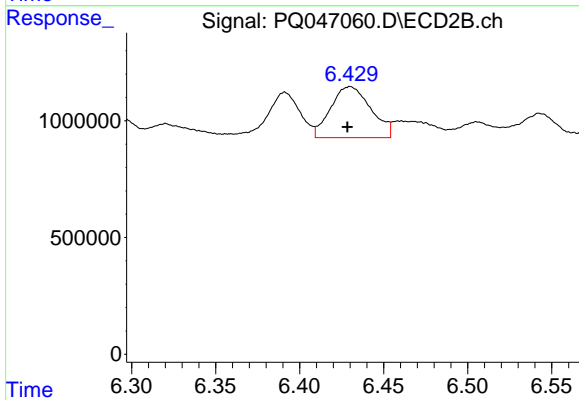
R.T.: 5.886 min
 Delta R.T.: 0.027 min
 Response: 669379
 Conc: 12.60 ng/ml



#20 AR-1242-5

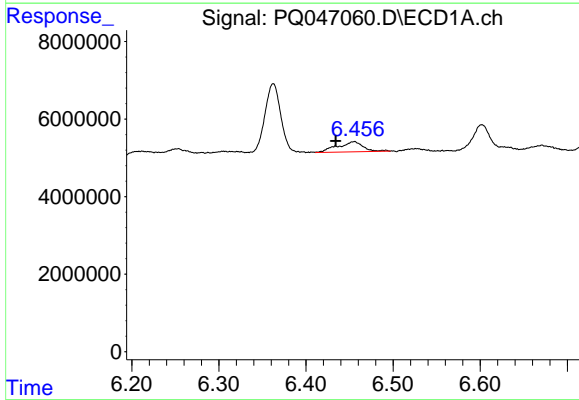
R.T.: 7.379 min
 Delta R.T.: -0.040 min
 Response: 18560929
 Conc: 39.51 ng/ml

Instrument :
 ECD_Q
 ClientSampleId :



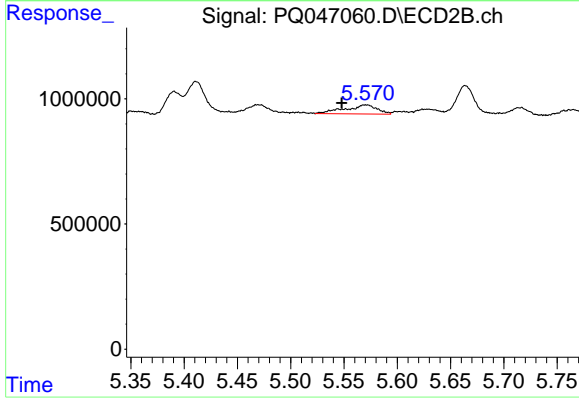
#20 AR-1242-5

R.T.: 6.430 min
 Delta R.T.: 0.002 min
 Response: 3654510
 Conc: 50.75 ng/ml



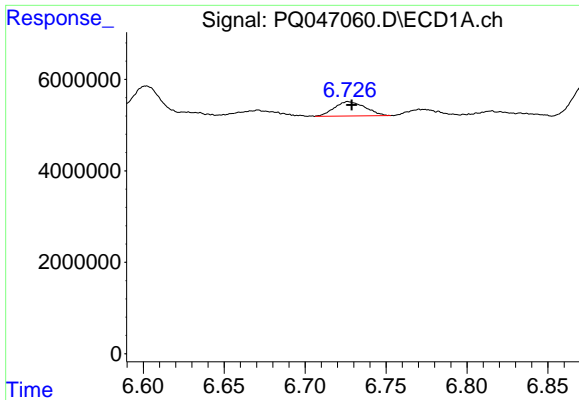
#21 AR-1248-1

R.T.: 6.455 min
 Delta R.T.: 0.021 min
 Response: 5375534
 Conc: 11.42 ng/ml



#21 AR-1248-1

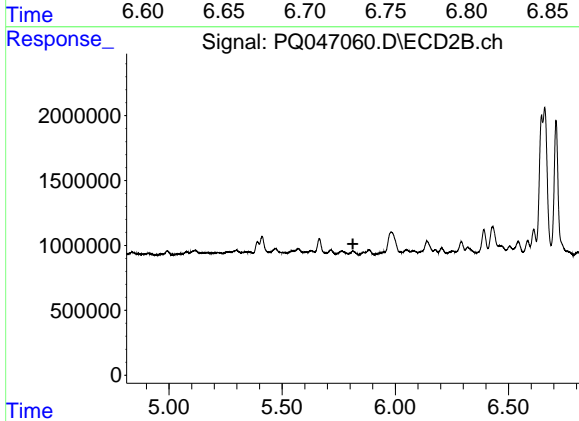
R.T.: 5.570 min
 Delta R.T.: 0.023 min
 Response: 758826
 Conc: 12.63 ng/ml



#22 AR-1248-2

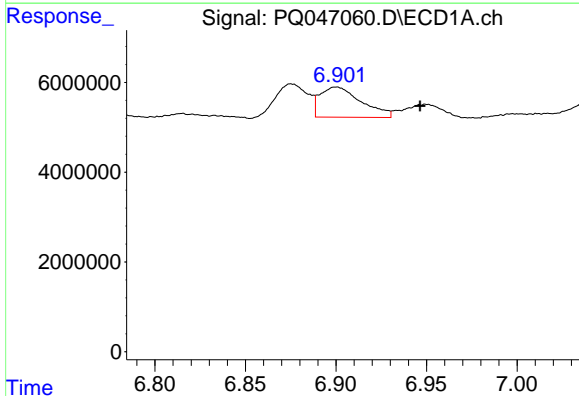
R.T.: 6.727 min
 Delta R.T.: -0.002 min
 Response: 4133531
 Conc: 6.42 ng/ml

Instrument :
 ECD_Q
 ClientSampleId :



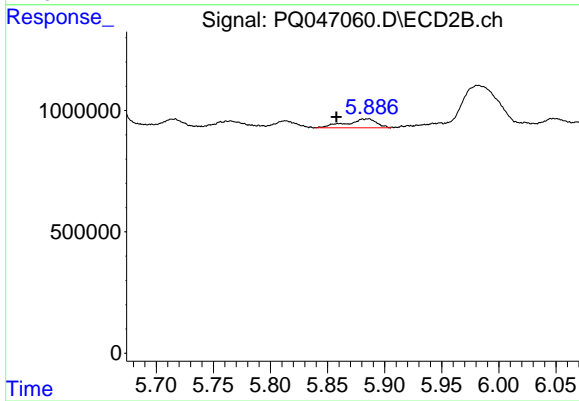
#22 AR-1248-2

R.T.: 0.000 min
 Exp R.T. : 5.812 min
 Response: 0
 Conc: N.D.



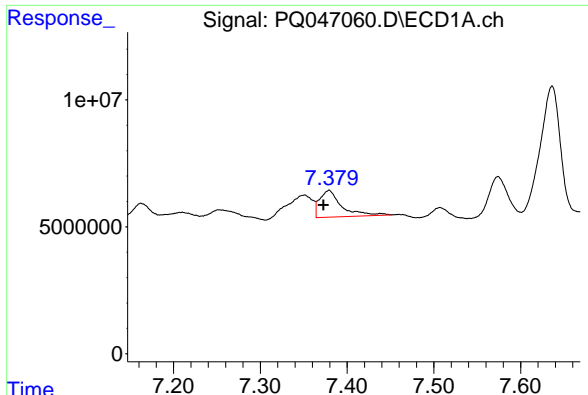
#23 AR-1248-3

R.T.: 6.900 min
 Delta R.T.: -0.046 min
 Response: 10664769
 Conc: 14.78 ng/ml



#23 AR-1248-3

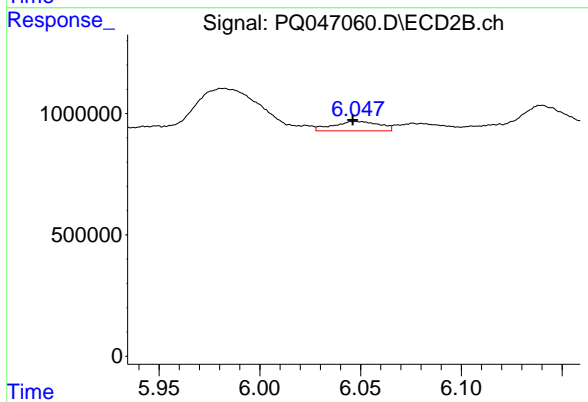
R.T.: 5.886 min
 Delta R.T.: 0.028 min
 Response: 669379
 Conc: 8.38 ng/ml



#24 AR-1248-4

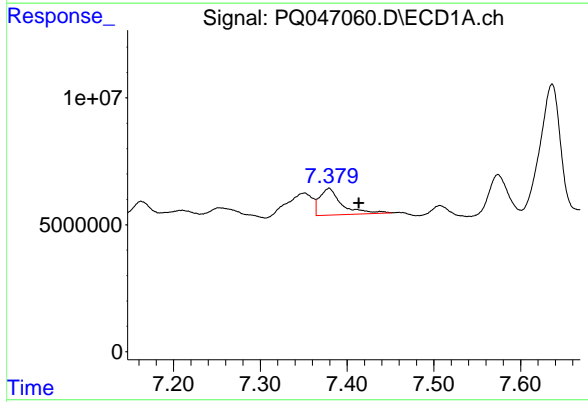
R.T.: 7.379 min
 Delta R.T.: 0.006 min
 Response: 18560929
 Conc: 22.87 ng/ml

Instrument :
 ECD_Q
 ClientSampleId :



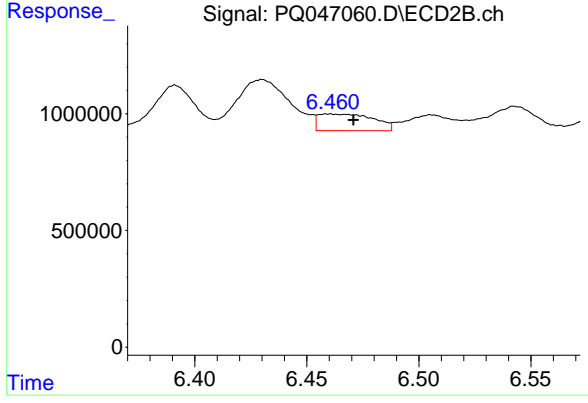
#24 AR-1248-4

R.T.: 6.047 min
 Delta R.T.: 0.001 min
 Response: 624955
 Conc: 6.61 ng/ml



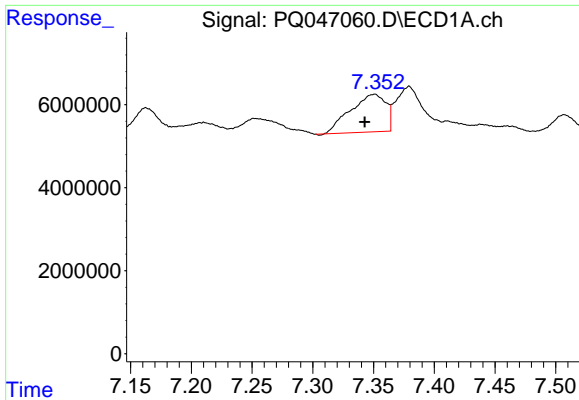
#25 AR-1248-5

R.T.: 7.379 min
 Delta R.T.: -0.034 min
 Response: 18560929
 Conc: 24.05 ng/ml



#25 AR-1248-5

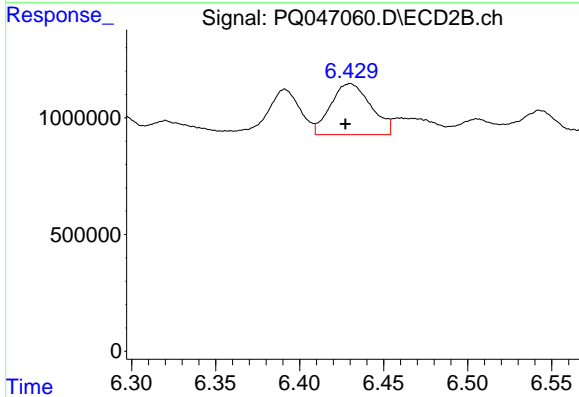
R.T.: 6.460 min
 Delta R.T.: -0.011 min
 Response: 1229784
 Conc: 11.67 ng/ml



#26 AR-1254-1

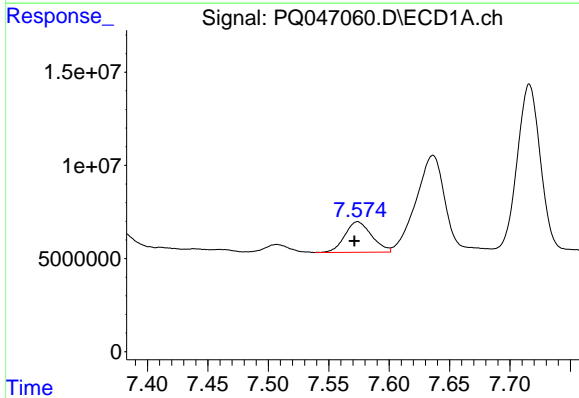
R.T.: 7.351 min
 Delta R.T.: 0.008 min
 Response: 18383858
 Conc: 23.81 ng/ml

Instrument :
 ECD_Q
 ClientSampleId :



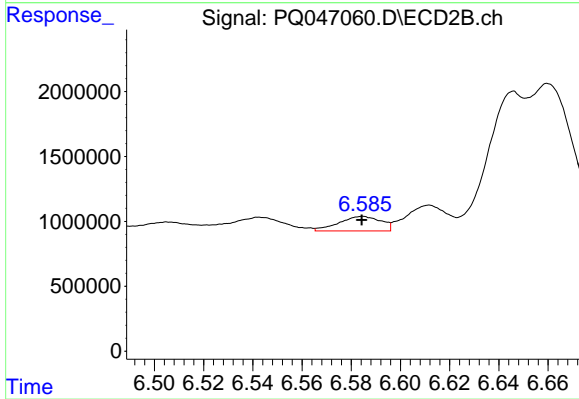
#26 AR-1254-1

R.T.: 6.430 min
 Delta R.T.: 0.003 min
 Response: 3654510
 Conc: 24.48 ng/ml



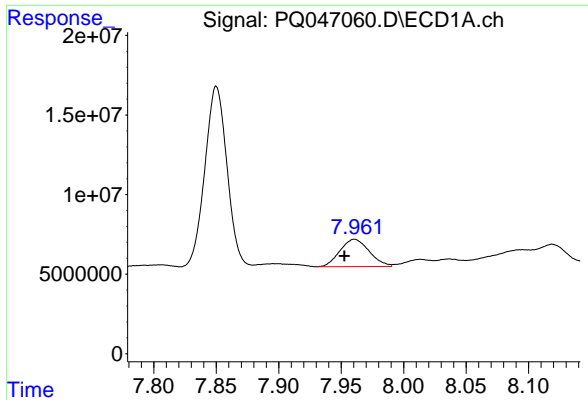
#27 AR-1254-2

R.T.: 7.574 min
 Delta R.T.: 0.003 min
 Response: 25536250
 Conc: 21.66 ng/ml



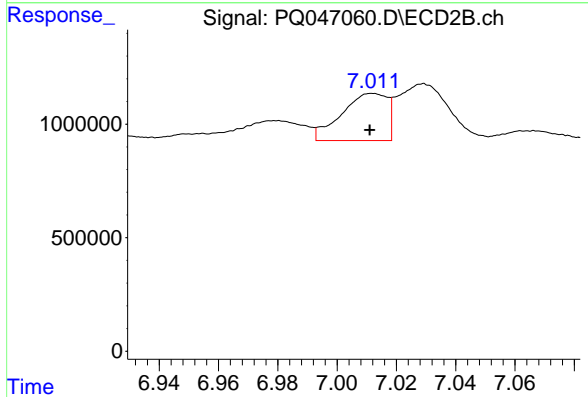
#27 AR-1254-2

R.T.: 6.585 min
 Delta R.T.: 0.000 min
 Response: 1320289
 Conc: 10.28 ng/ml

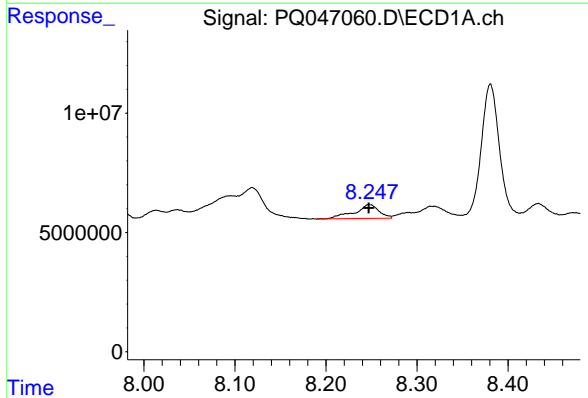


#28 AR-1254-3
 R.T.: 7.961 min
 Delta R.T.: 0.008 min
 Response: 27950504
 Conc: 23.95 ng/ml

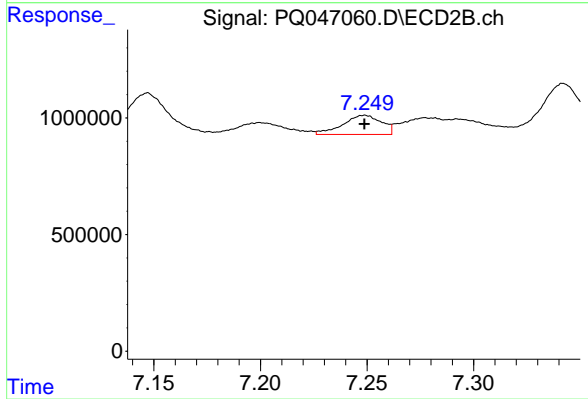
Instrument :
 ECD_Q
 ClientSampled :



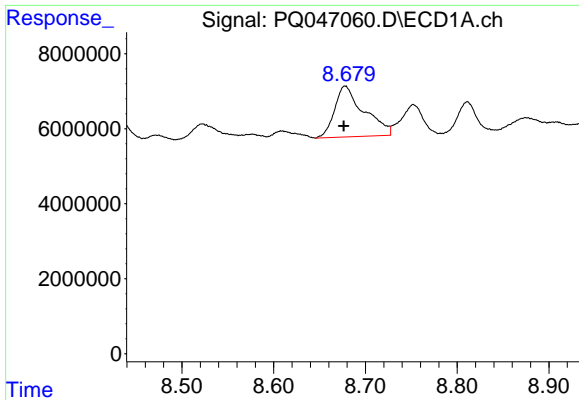
#28 AR-1254-3
 R.T.: 7.012 min
 Delta R.T.: 0.000 min
 Response: 2228444
 Conc: 10.49 ng/ml



#29 AR-1254-4
 R.T.: 8.248 min
 Delta R.T.: 0.000 min
 Response: 10988141
 Conc: 11.74 ng/ml



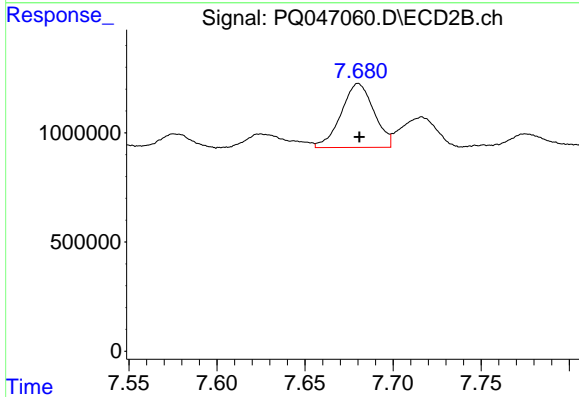
#29 AR-1254-4
 R.T.: 7.249 min
 Delta R.T.: 0.000 min
 Response: 1042276
 Conc: 7.69 ng/ml



#30 AR-1254-5

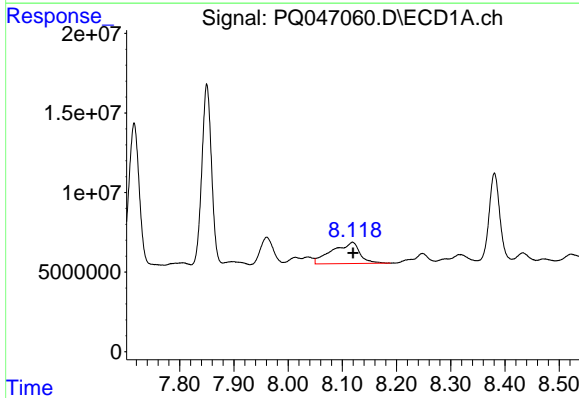
R.T.: 8.678 min
 Delta R.T.: 0.002 min
 Response: 30147151
 Conc: 35.93 ng/ml

Instrument :
 ECD_Q
 ClientSampleId :



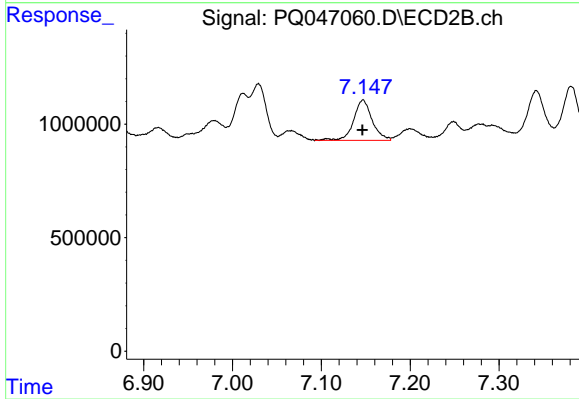
#30 AR-1254-5

R.T.: 7.680 min
 Delta R.T.: 0.000 min
 Response: 3792475
 Conc: 20.64 ng/ml



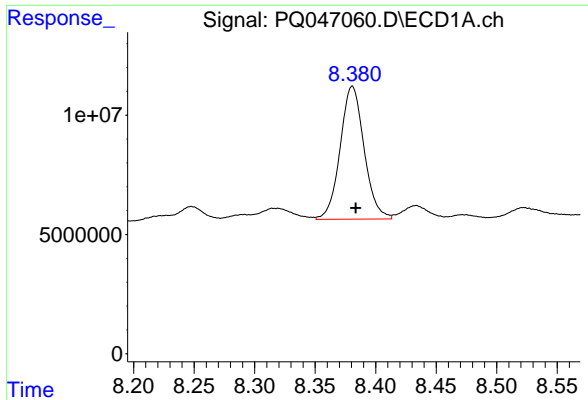
#31 AR-1260-1

R.T.: 8.119 min
 Delta R.T.: -0.001 min
 Response: 47721281
 Conc: 45.62 ng/ml



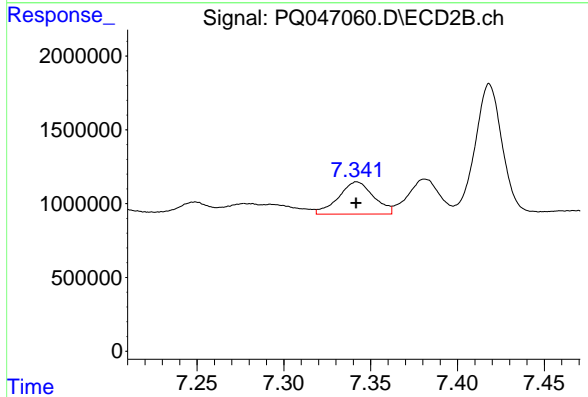
#31 AR-1260-1

R.T.: 7.147 min
 Delta R.T.: 0.000 min
 Response: 2589300
 Conc: 14.80 ng/ml

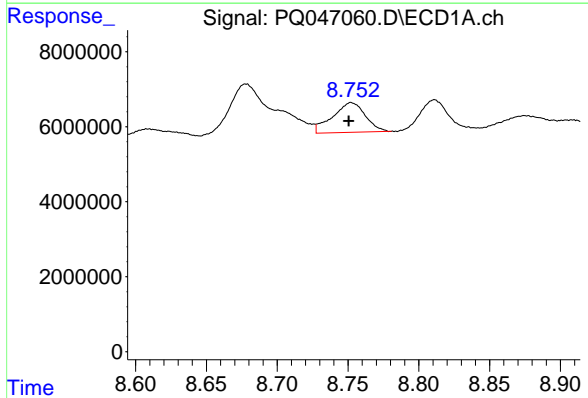


#32 AR-1260-2
 R.T.: 8.381 min
 Delta R.T.: -0.003 min
 Response: 76860859
 Conc: 55.95 ng/ml

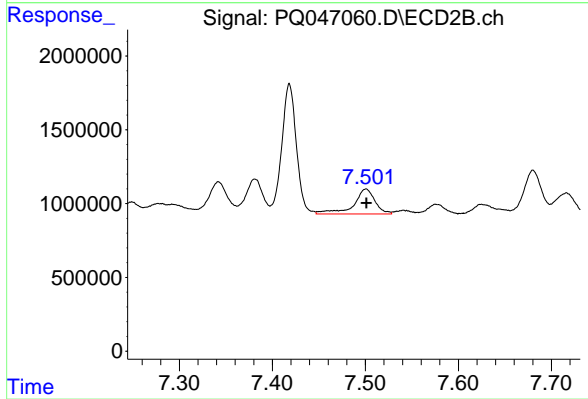
Instrument :
 ECD_Q
 ClientSampleId :



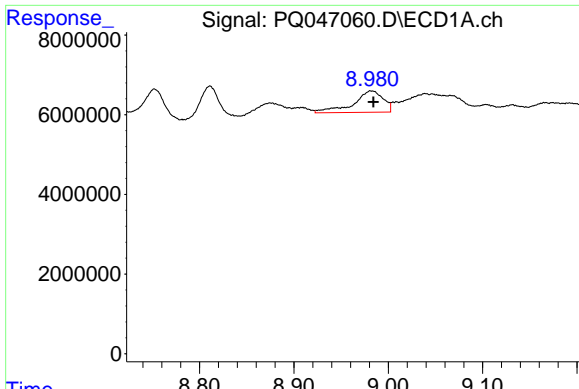
#32 AR-1260-2
 R.T.: 7.342 min
 Delta R.T.: 0.000 min
 Response: 3075216
 Conc: 14.27 ng/ml



#33 AR-1260-3
 R.T.: 8.752 min
 Delta R.T.: 0.002 min
 Response: 12751937
 Conc: 11.84 ng/ml



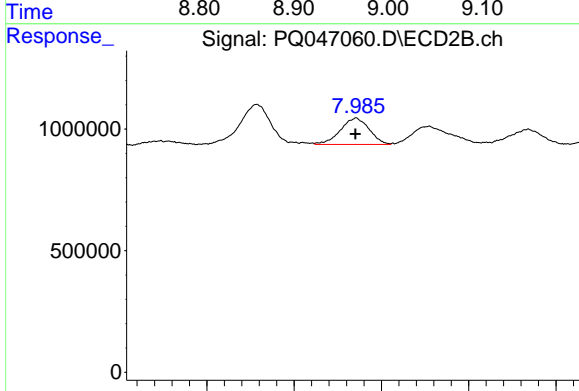
#33 AR-1260-3
 R.T.: 7.501 min
 Delta R.T.: 0.000 min
 Response: 2697964
 Conc: 13.41 ng/ml



#34 AR-1260-4

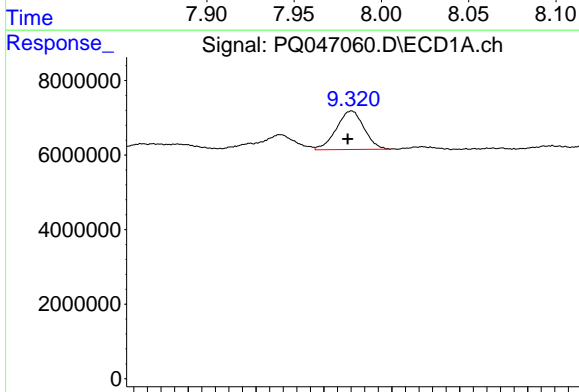
R.T.: 8.982 min
 Delta R.T.: -0.003 min
 Response: 11897071
 Conc: 11.93 ng/ml

Instrument :
 ECD_Q
 ClientSampleId :



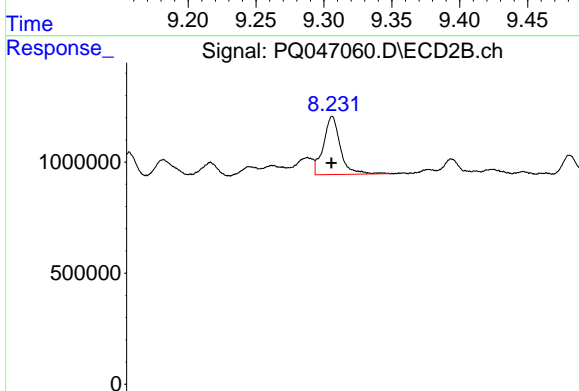
#34 AR-1260-4

R.T.: 7.986 min
 Delta R.T.: 0.000 min
 Response: 1245870
 Conc: 7.11 ng/ml



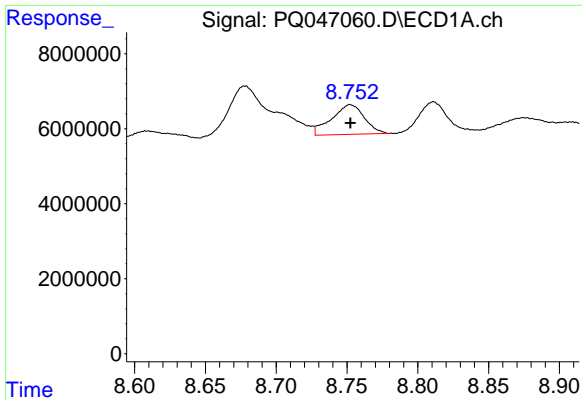
#35 AR-1260-5

R.T.: 9.320 min
 Delta R.T.: 0.003 min
 Response: 14657838
 Conc: 7.05 ng/ml



#35 AR-1260-5

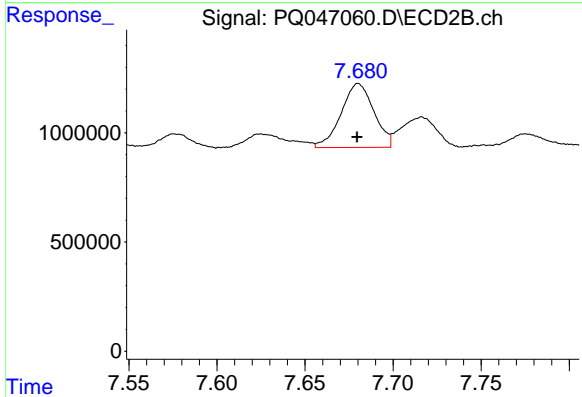
R.T.: 8.232 min
 Delta R.T.: 0.001 min
 Response: 3729487
 Conc: 8.56 ng/ml



#36 AR-1262-1

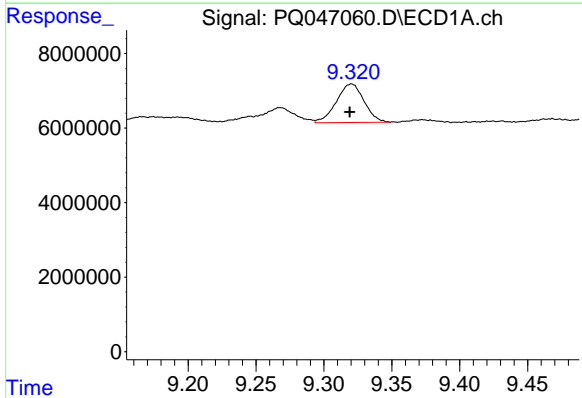
R.T.: 8.752 min
Delta R.T.: 0.000 min
Response: 12751937
Conc: 9.81 ng/ml

Instrument :
ECD_Q
ClientSampleId :



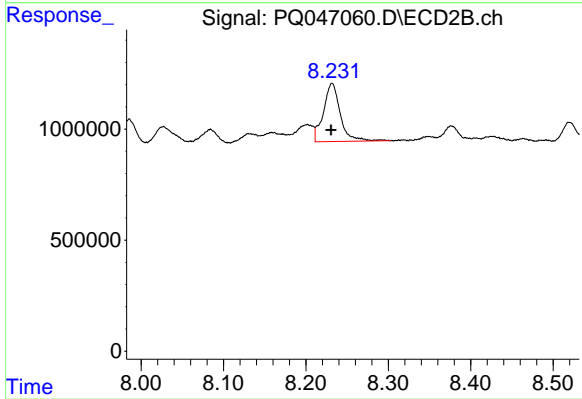
#36 AR-1262-1

R.T.: 7.680 min
Delta R.T.: 0.000 min
Response: 3792475
Conc: 35.10 ng/ml



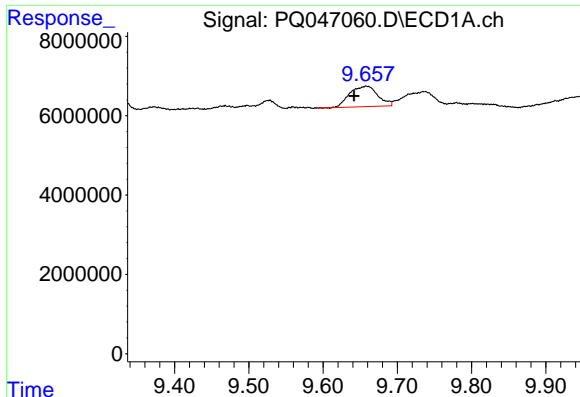
#37 AR-1262-2

R.T.: 9.320 min
Delta R.T.: 0.001 min
Response: 14657838
Conc: 7.54 ng/ml



#37 AR-1262-2

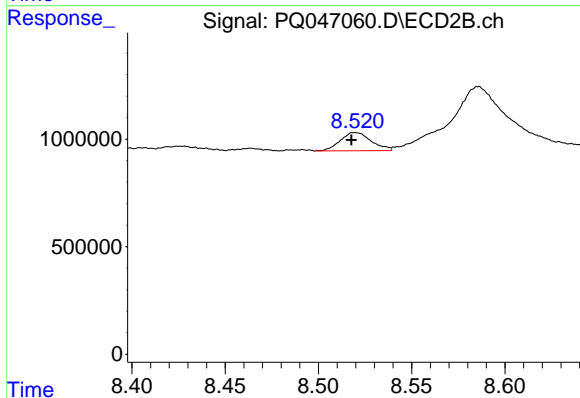
R.T.: 8.232 min
Delta R.T.: 0.001 min
Response: 3729487
Conc: 9.42 ng/ml



#38 AR-1262-3

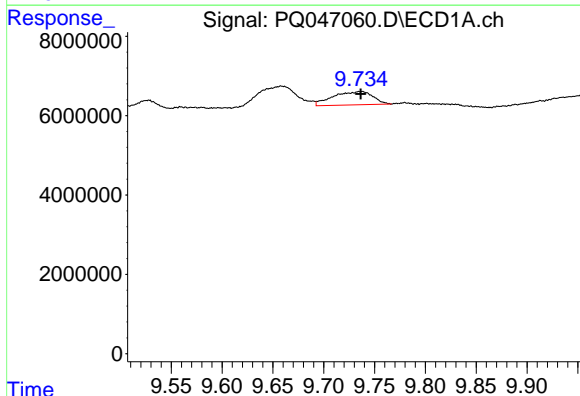
R.T.: 9.658 min
 Delta R.T.: 0.017 min
 Response: 13545543
 Conc: 11.08 ng/ml

Instrument :
 ECD_Q
 ClientSampleId :



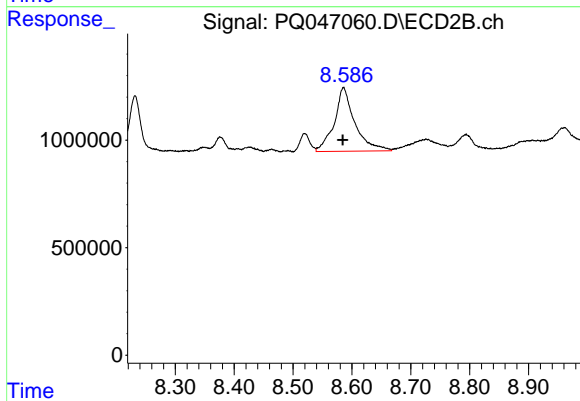
#38 AR-1262-3

R.T.: 8.520 min
 Delta R.T.: 0.002 min
 Response: 981657
 Conc: 6.56 ng/ml



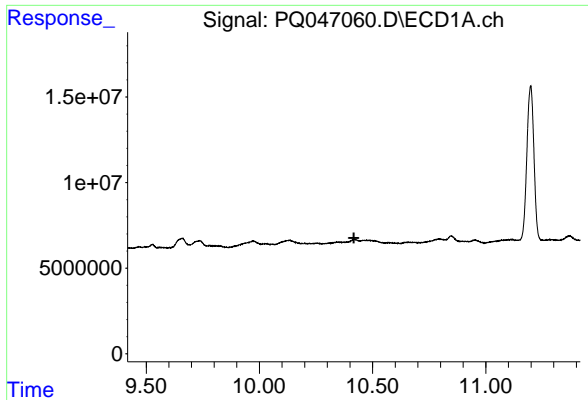
#39 AR-1262-4

R.T.: 9.737 min
 Delta R.T.: 0.000 min
 Response: 9158392
 Conc: 10.08 ng/ml



#39 AR-1262-4

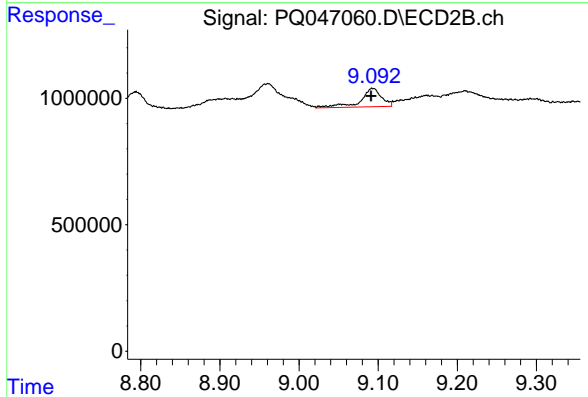
R.T.: 8.586 min
 Delta R.T.: 0.002 min
 Response: 7180456
 Conc: 25.28 ng/ml



#40 AR-1262-5

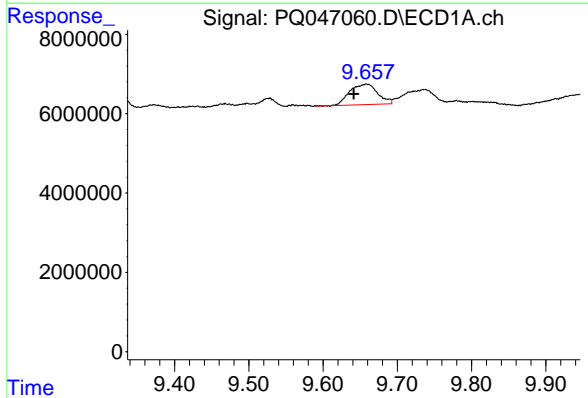
R.T.: 0.000 min
 Exp R.T.: 10.418 min
 Response: 0
 Conc: N.D.

Instrument :
 ECD_Q
 ClientSampleId :



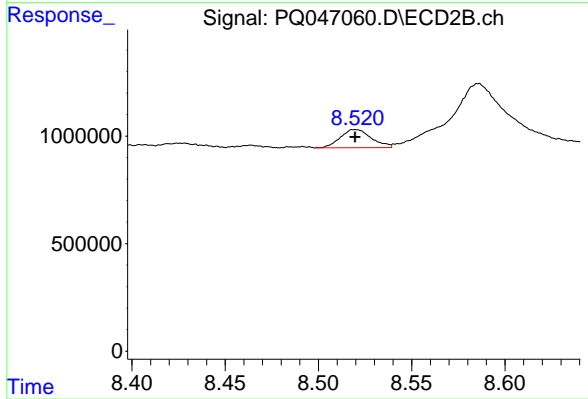
#40 AR-1262-5

R.T.: 9.093 min
 Delta R.T.: 0.002 min
 Response: 1329396
 Conc: 10.26 ng/ml



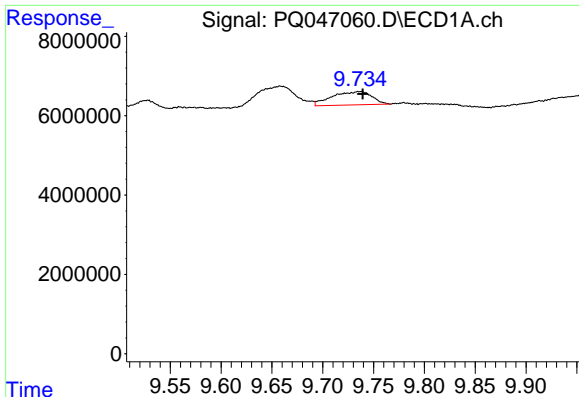
#41 AR-1268-1

R.T.: 9.658 min
 Delta R.T.: 0.017 min
 Response: 13545543
 Conc: 6.37 ng/ml



#41 AR-1268-1

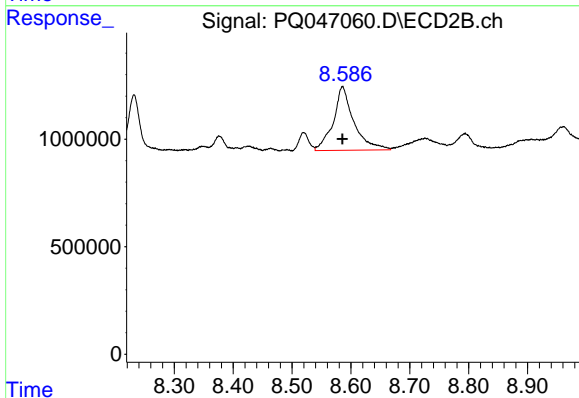
R.T.: 8.520 min
 Delta R.T.: 0.000 min
 Response: 981657
 Conc: 2.28 ng/ml



#42 AR-1268-2

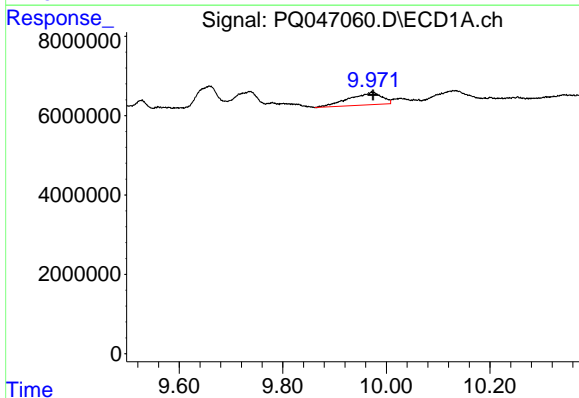
R.T.: 9.737 min
 Delta R.T.: -0.003 min
 Response: 9158392
 Conc: 5.06 ng/ml

Instrument :
 ECD_Q
 ClientSampleId :



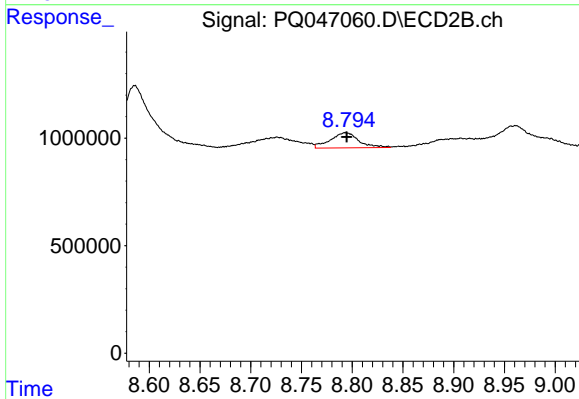
#42 AR-1268-2

R.T.: 8.586 min
 Delta R.T.: 0.000 min
 Response: 7180456
 Conc: 18.31 ng/ml



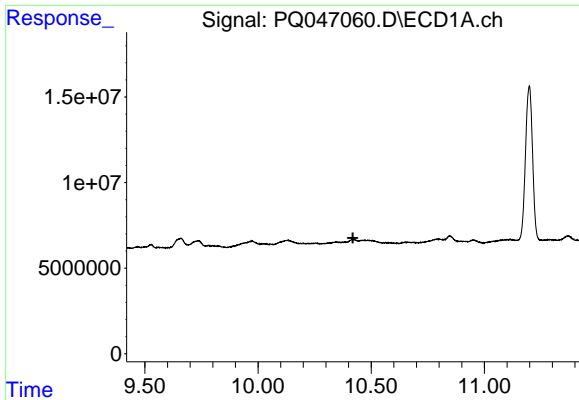
#43 AR-1268-3

R.T.: 9.972 min
 Delta R.T.: -0.002 min
 Response: 13680646
 Conc: 9.19 ng/ml



#43 AR-1268-3

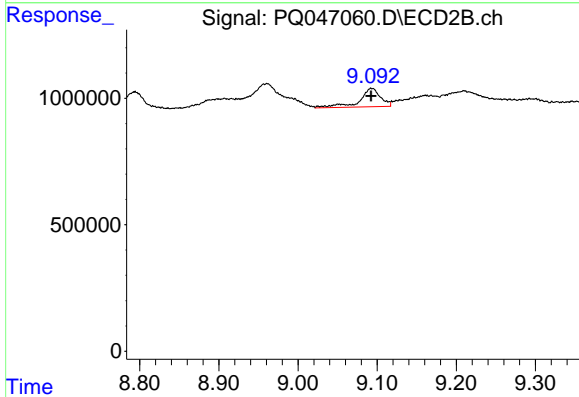
R.T.: 8.794 min
 Delta R.T.: 0.000 min
 Response: 1377440
 Conc: 4.33 ng/ml



#44 AR-1268-4

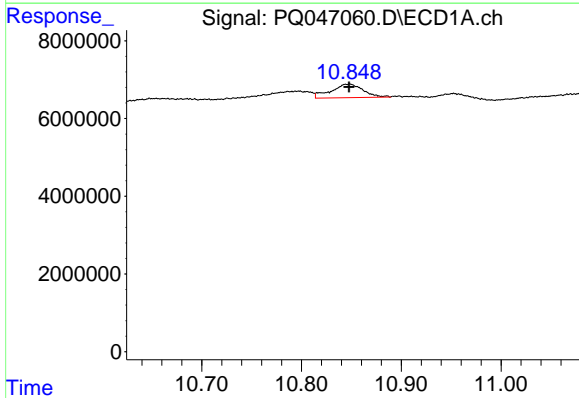
R.T.: 0.000 min
 Exp R.T.: 10.419 min
 Response: 0
 Conc: N.D.

Instrument :
 ECD_Q
 ClientSampleId :



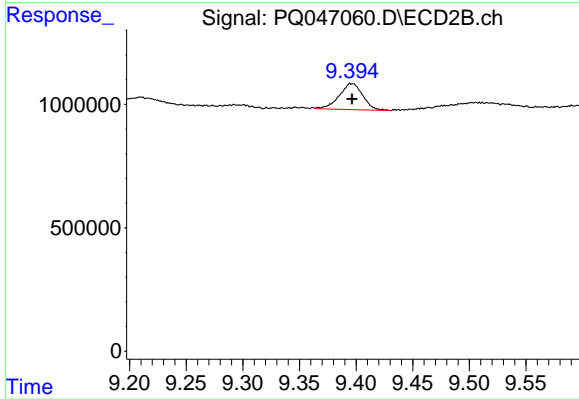
#44 AR-1268-4

R.T.: 9.093 min
 Delta R.T.: 0.000 min
 Response: 1329396
 Conc: 9.56 ng/ml



#45 AR-1268-5

R.T.: 10.848 min
 Delta R.T.: 0.000 min
 Response: 7829560
 Conc: 2.09 ng/ml



#45 AR-1268-5

R.T.: 9.396 min
 Delta R.T.: 0.000 min
 Response: 1528999
 Conc: 1.52 ng/ml