

Data Path : Z:\pestpcbsrv\HPCHEM1\ECD_Q\Data\PQ031920\
 Data File : PQ047062.D
 Signal(s) : Signal #1: ECD1A.ch Signal #2: ECD2B.ch
 Acq On : 19 Mar 2020 14:58
 Operator : AJ\MA
 Sample : L1978-02MS
 Misc :
 ALS Vial : 14 Sample Multiplier: 1

Instrument :
 ECD_Q
ClientSampled :
 TP-5AMS

Manual Integrations
APPROVED
 Sohil
 3/20/2020 1:00:33 PM

Integration File signal 1: autoint1.e
 Integration File signal 2: autoint2.e
 Quant Time: Mar 19 16:51:58 2020
 Quant Method : Z:\pestpcbsrv\HPCHEM1\ECD_Q\Method\PQ031720.M
 Quant Title : GC EXTRACTABLES
 QLast Update : Tue Mar 17 15:09:31 2020
 Response via : Initial Calibration
 Integrator: ChemStation

Volume Inj. : 2 µl
 Signal #1 Phase : ZB-MR1 Signal #2 Phase: ZB-MR2
 Signal #1 Info : 30Mx0.32mmx 0.50µ Signal #2 Info : 30M x 0.32mm x 0.25µm

Compound	RT#1	RT#2	Resp#1	Resp#2	ng/ml	ng/ml

System Monitoring Compounds						
1) SA Tetrachlo...	5.118	4.274	442.9E6	64721589	19.810	22.550
2) SA Decachlor...	11.195	9.663	195.3E6	47491951	15.293	14.232
Target Compounds						
3) L1 AR-1016-1	6.432	5.547	142.8E6	22551939	156.516m	191.958m
4) L1 AR-1016-2	6.455	5.568	215.1E6	28000230	166.353m	175.256m
5) L1 AR-1016-3	6.523	5.763	131.9E6	16121867	172.746m	188.603m
6) L1 AR-1016-4	6.629	5.812	121.0E6	12973742	182.225m	187.009m
7) L1 AR-1016-5	6.945	6.045	108.1E6	14786921	169.200m	161.975
31) L7 AR-1260-1	8.121	7.146	176.8E6	30896681	168.987	176.648
32) L7 AR-1260-2	8.385	7.341	210.0E6	40243492	152.848	186.758
33) L7 AR-1260-3	8.752	7.501	126.9E6	34644452	117.837	172.259 #
34) L7 AR-1260-4	8.987	7.985	146.3E6	25013296	146.654	142.671
35) L7 AR-1260-5	9.320	8.231	263.4E6	58513868	126.725	134.303

(f)=RT Delta > 1/2 Window (#)=Amounts differ by > 25% (m)=manual int.

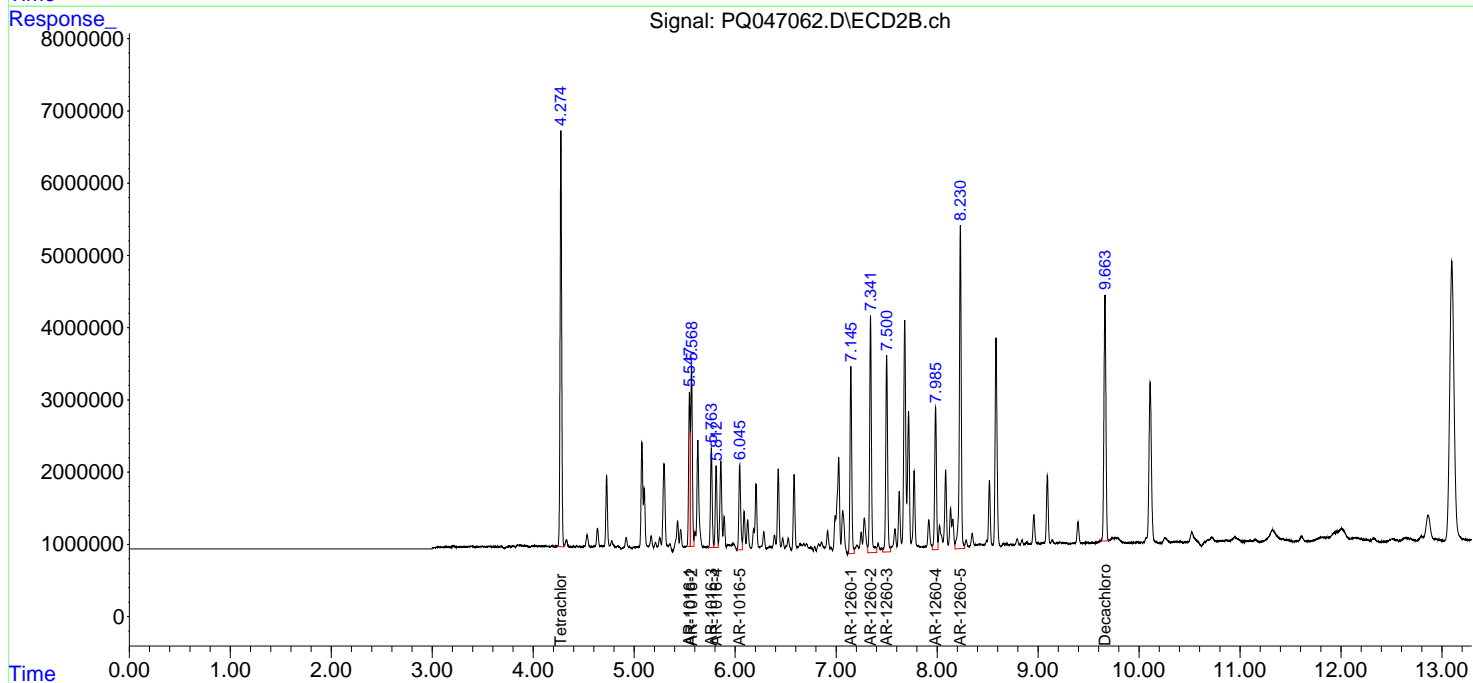
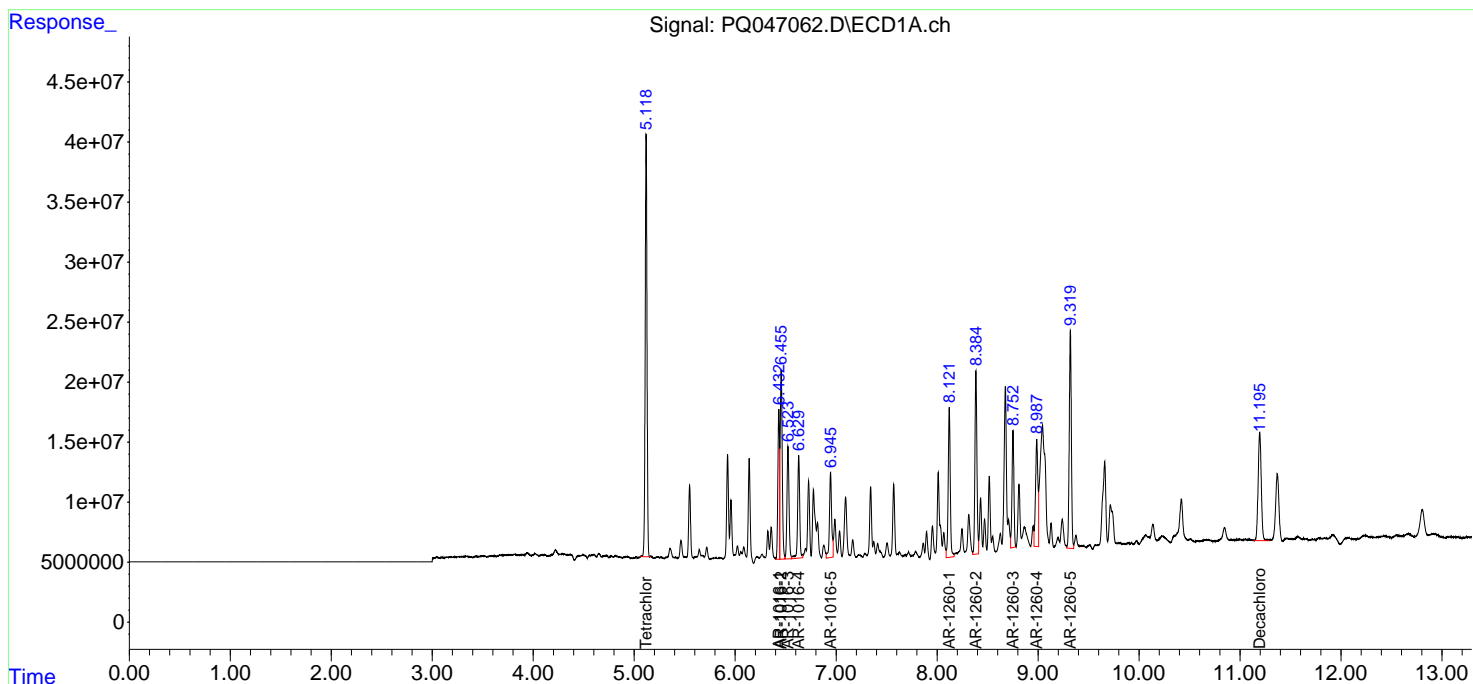
Data Path : Z:\pestpcbsrv\HPCHEM1\ECD_Q\Data\PQ031920\
 Data File : PQ047062.D
 Signal(s) : Signal #1: ECD1A.ch Signal #2: ECD2B.ch
 Acq On : 19 Mar 2020 14:58
 Operator : AJ\MA
 Sample : L1978-02MS
 Misc :
 ALS Vial : 14 Sample Multiplier: 1

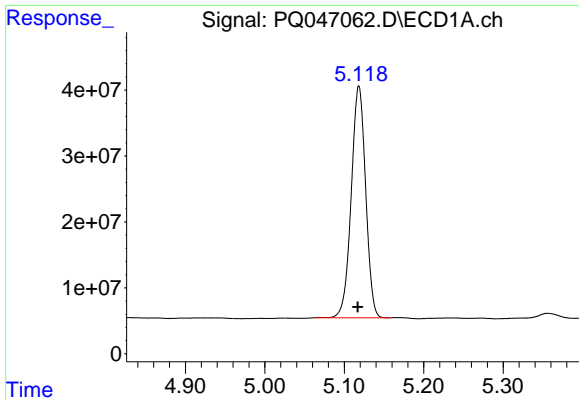
Instrument :
 ECD_Q
Client Sampled :
 TP-5AMS

Manual Integrations
APPROVED
 Sohil
 3/20/2020 1:00:33 PM

Integration File signal 1: autoint1.e
 Integration File signal 2: autoint2.e
 Quant Time: Mar 19 16:51:58 2020
 Quant Method : Z:\pestpcbsrv\HPCHEM1\ECD_Q\Method\PQ031720.M
 Quant Title : GC EXTRACTABLES
 QLast Update : Tue Mar 17 15:09:31 2020
 Response via : Initial Calibration
 Integrator: ChemStation

Volume Inj. : 2 µl
 Signal #1 Phase : ZB-MR1 Signal #2 Phase: ZB-MR2
 Signal #1 Info : 30Mx0.32mmx 0.50µ Signal #2 Info : 30M x 0.32mm x 0.25µm

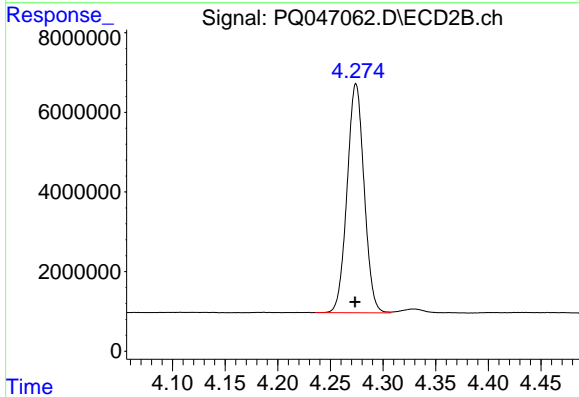




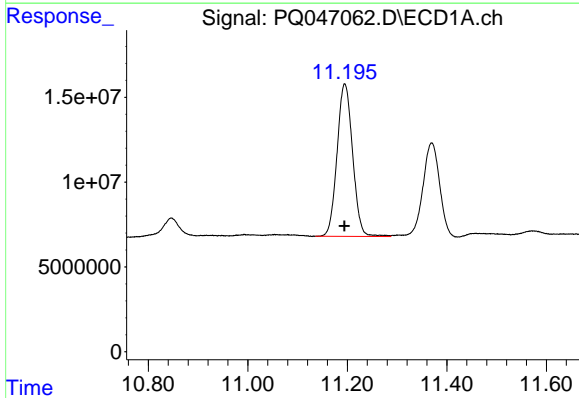
#1 Tetrachloro-m-xylene
 R.T.: 5.118 min
 Delta R.T.: 0.001 min
 Response: 442930040
 Conc: 19.81 ng/ml

Instrument :
 ECD_Q
 ClientSampled :
 TP-5AMS

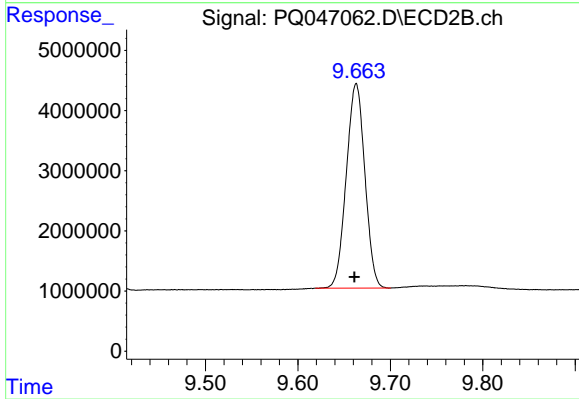
Manual Integrations
 APPROVED
 Sohil
 3/20/2020 1:00:33 PM



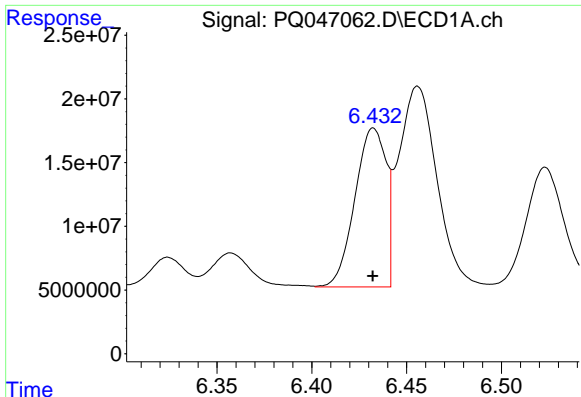
#1 Tetrachloro-m-xylene
 R.T.: 4.274 min
 Delta R.T.: 0.001 min
 Response: 64721589
 Conc: 22.55 ng/ml



#2 Decachlorobiphenyl
 R.T.: 11.195 min
 Delta R.T.: 0.001 min
 Response: 195323718
 Conc: 15.29 ng/ml



#2 Decachlorobiphenyl
 R.T.: 9.663 min
 Delta R.T.: 0.002 min
 Response: 47491951
 Conc: 14.23 ng/ml

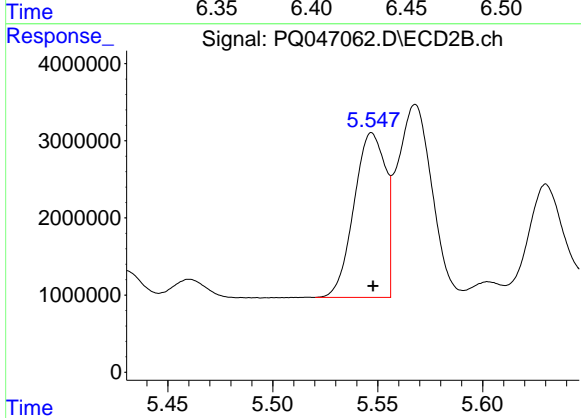


#3 AR-1016-1

R.T.: 6.432 min
 Delta R.T.: 0.000 min
 Response: 142784525
 Conc: 156.52 ng/ml m

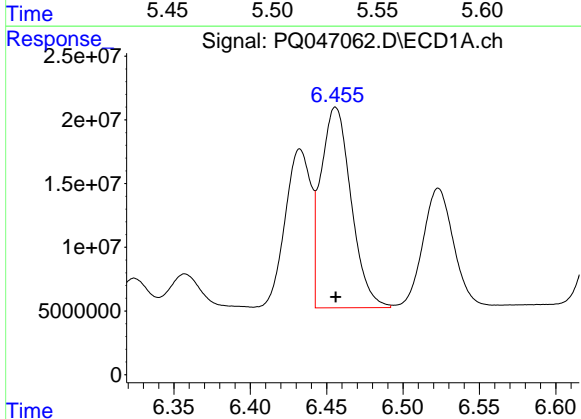
Instrument :
 ECD_Q
 ClientSampled :
 TP-5AMS

Manual Integrations
 APPROVED
 Sohil
 3/20/2020 1:00:33 PM



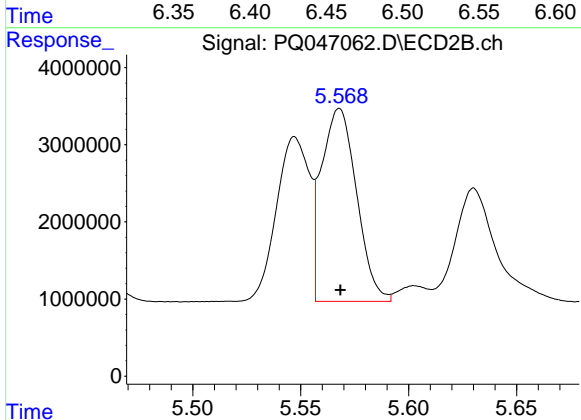
#3 AR-1016-1

R.T.: 5.547 min
 Delta R.T.: -0.001 min
 Response: 22551939
 Conc: 191.96 ng/ml m



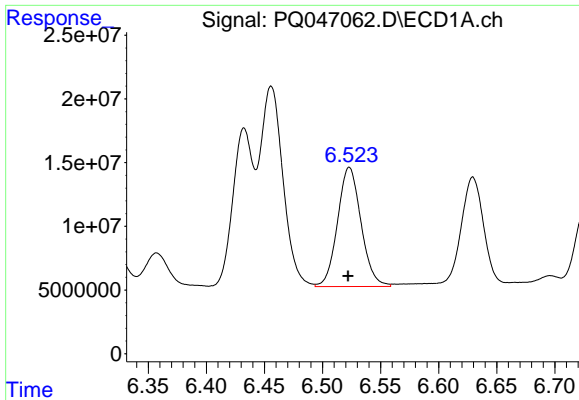
#4 AR-1016-2

R.T.: 6.455 min
 Delta R.T.: 0.000 min
 Response: 215106031
 Conc: 166.35 ng/ml m



#4 AR-1016-2

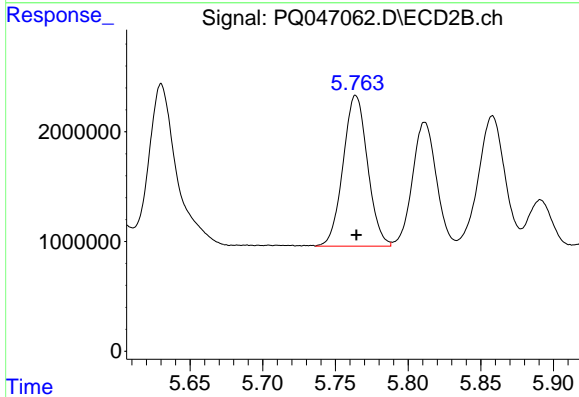
R.T.: 5.568 min
 Delta R.T.: 0.000 min
 Response: 28000230
 Conc: 175.26 ng/ml m



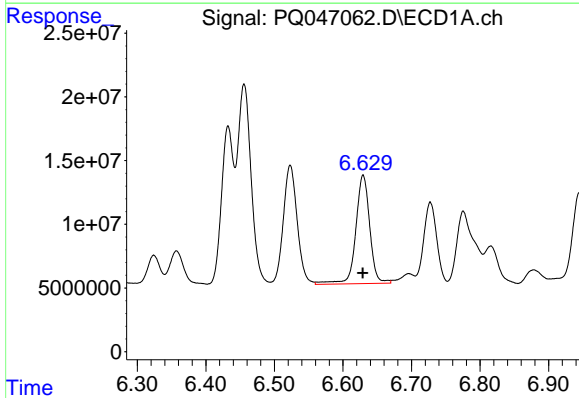
#5 AR-1016-3
 R.T.: 6.523 min
 Delta R.T.: 0.000 min
 Response: 131860822
 Conc: 172.75 ng/ml m

Instrument :
 ECD_Q
ClientSampled :
 TP-5AMS

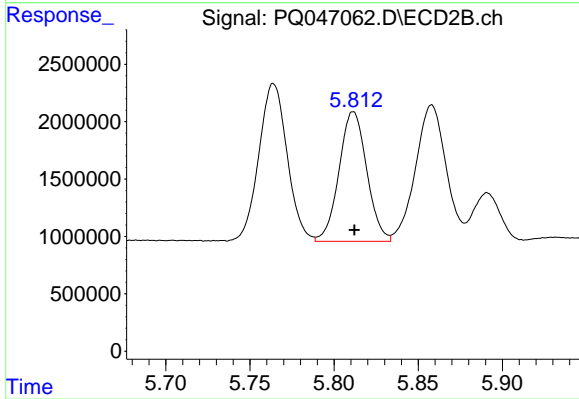
Manual Integrations
APPROVED
 Sohil
 3/20/2020 1:00:33 PM



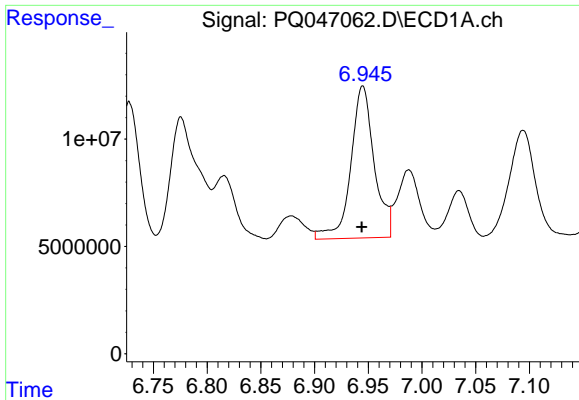
#5 AR-1016-3
 R.T.: 5.763 min
 Delta R.T.: -0.001 min
 Response: 16121867
 Conc: 188.60 ng/ml m



#6 AR-1016-4
 R.T.: 6.629 min
 Delta R.T.: 0.000 min
 Response: 121017217
 Conc: 182.23 ng/ml m



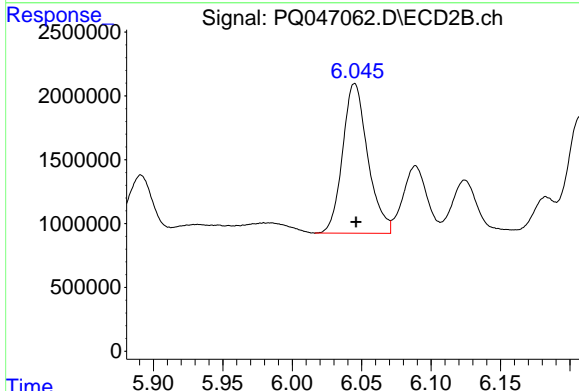
#6 AR-1016-4
 R.T.: 5.812 min
 Delta R.T.: 0.000 min
 Response: 12973742
 Conc: 187.01 ng/ml m



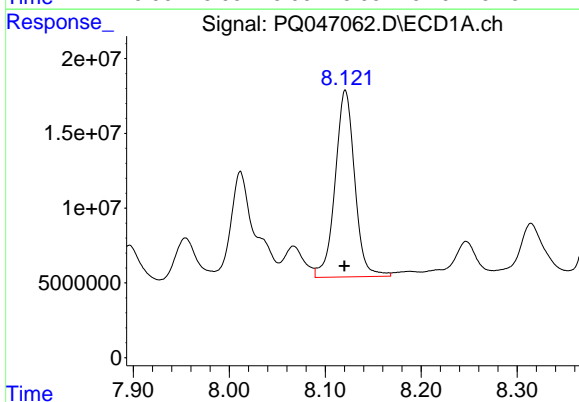
#7 AR-1016-5
 R.T.: 6.945 min
 Delta R.T.: 0.000 min
 Response: 108084437
 Conc: 169.20 ng/ml m

Instrument :
 ECD_Q
ClientSampled :
 TP-5AMS

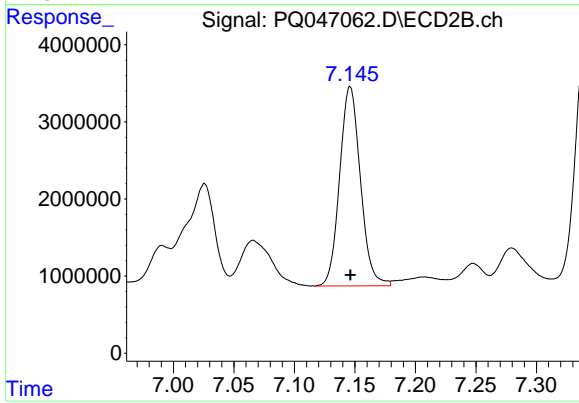
Manual Integrations
APPROVED
 Sohil
 3/20/2020 1:00:33 PM



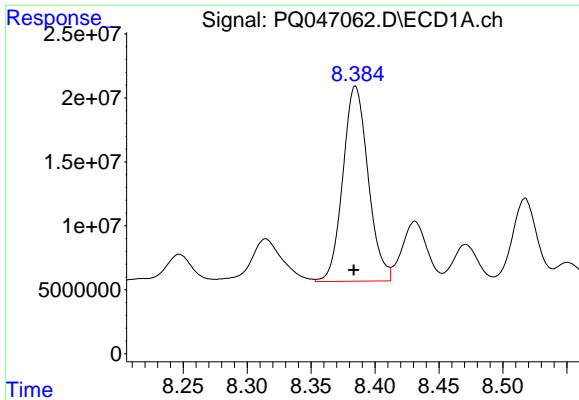
#7 AR-1016-5
 R.T.: 6.045 min
 Delta R.T.: -0.001 min
 Response: 14786921
 Conc: 161.97 ng/ml



#31 AR-1260-1
 R.T.: 8.121 min
 Delta R.T.: 0.000 min
 Response: 176764338
 Conc: 168.99 ng/ml



#31 AR-1260-1
 R.T.: 7.146 min
 Delta R.T.: 0.000 min
 Response: 30896681
 Conc: 176.65 ng/ml

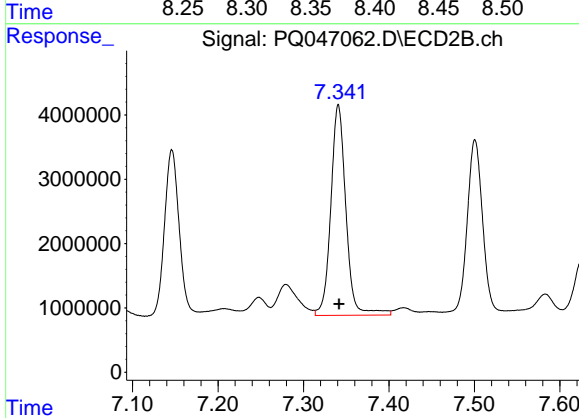


#32 AR-1260-2

R.T.: 8.385 min
 Delta R.T.: 0.001 min
 Response: 209976784
 Conc: 152.85 ng/ml

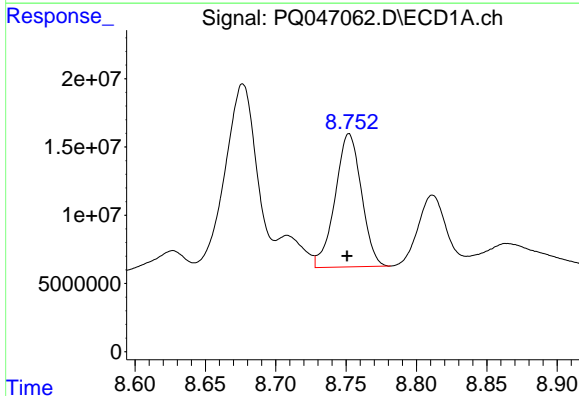
Instrument :
 ECD_Q
ClientSampled :
 TP-5AMS

Manual Integrations
APPROVED
 Sohil
 3/20/2020 1:00:33 PM



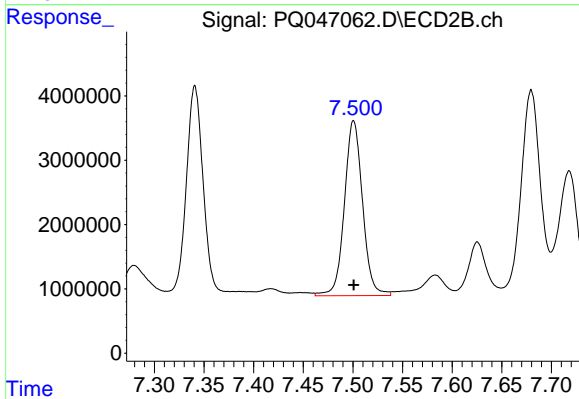
#32 AR-1260-2

R.T.: 7.341 min
 Delta R.T.: 0.000 min
 Response: 40243492
 Conc: 186.76 ng/ml



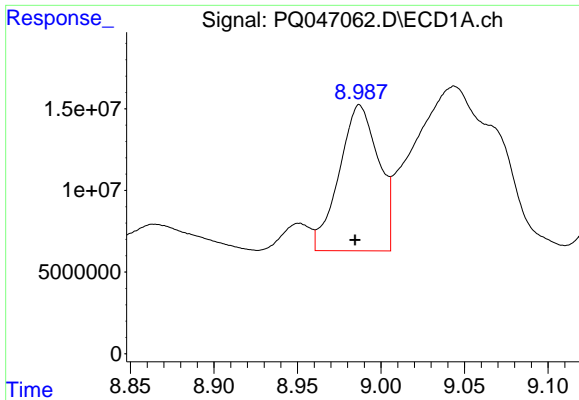
#33 AR-1260-3

R.T.: 8.752 min
 Delta R.T.: 0.002 min
 Response: 126947084
 Conc: 117.84 ng/ml



#33 AR-1260-3

R.T.: 7.501 min
 Delta R.T.: 0.000 min
 Response: 34644452
 Conc: 172.26 ng/ml



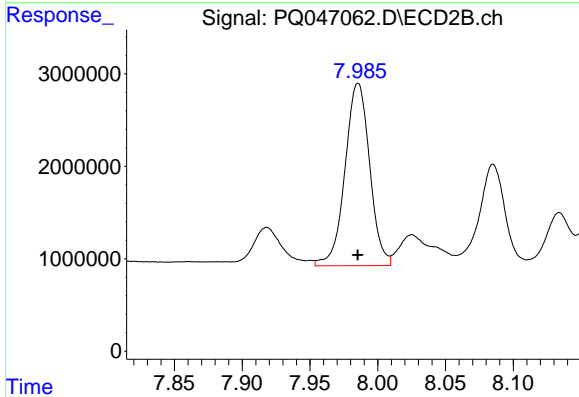
#34 AR-1260-4

R.T.: 8.987 min
 Delta R.T.: 0.003 min
 Response: 146299172
 Conc: 146.65 ng/ml

Instrument :
 ECD_Q
 ClientSampled :
 TP-5AMS

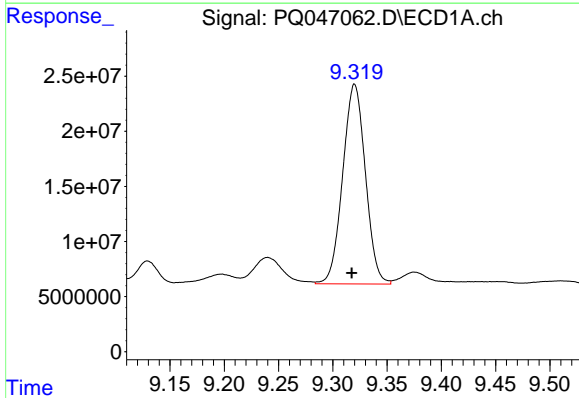
Manual Integrations
 APPROVED

Sohil
 3/20/2020 1:00:33 PM



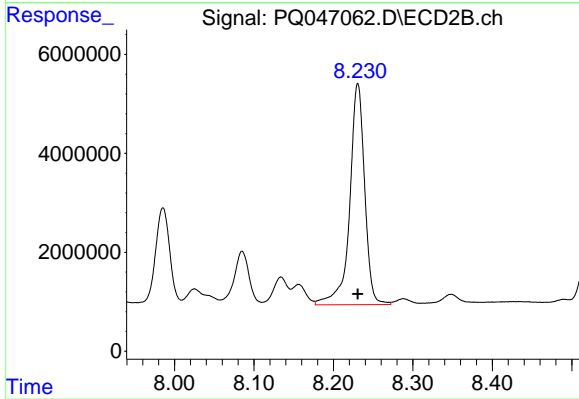
#34 AR-1260-4

R.T.: 7.985 min
 Delta R.T.: 0.000 min
 Response: 25013296
 Conc: 142.67 ng/ml



#35 AR-1260-5

R.T.: 9.320 min
 Delta R.T.: 0.003 min
 Response: 263419225
 Conc: 126.72 ng/ml



#35 AR-1260-5

R.T.: 8.231 min
 Delta R.T.: 0.000 min
 Response: 58513868
 Conc: 134.30 ng/ml