

Data Path : Z:\pestpcbsrv\HPCHEM1\ECD_Q\Data\PQ032620\
 Data File : PQ047087.D
 Signal(s) : Signal #1: ECD1A.ch Signal #2: ECD2B.ch
 Acq On : 26 Mar 2020 18:18
 Operator : AJ\MA
 Sample : L2027-02 2X
 Misc :
 ALS Vial : 19 Sample Multiplier: 1

Instrument :
 ECD_Q
 ClientSampled :
 03-24-B

Integration File signal 1: autoint1.e
 Integration File signal 2: autoint2.e
 Quant Time: Mar 27 04:50:53 2020
 Quant Method : Z:\pestpcbsrv\HPCHEM1\ECD_Q\Method\PQ031720.M
 Quant Title : GC EXTRACTABLES
 QLast Update : Tue Mar 17 15:09:31 2020
 Response via : Initial Calibration
 Integrator: ChemStation

Volume Inj. : 2 µl
 Signal #1 Phase : ZB-MR1 Signal #2 Phase: ZB-MR2
 Signal #1 Info : 30Mx0.32mmx 0.50µ Signal #2 Info : 30M x 0.32mm x 0.25µm

Compound	RT#1	RT#2	Resp#1	Resp#2	ng/ml	ng/ml
System Monitoring Compounds						
1) SA Tetrachlo...	5.114	4.270	268.2E6	38364195	11.994	13.367
2) SA Decachlor...	11.189	9.657	88871106	32253913	6.958	9.666 #
Target Compounds						
3) L1 AR-1016-1	0.000	5.534	0	397266	N.D.	3.381 #
4) L1 AR-1016-2	0.000	5.534	0	397266	N.D.	2.487 #
6) L1 AR-1016-4	0.000	5.855	0	36443979	N.D.	525.319 #
7) L1 AR-1016-5	6.906	6.084	146.1E6	23875477	228.709	261.530
8) L2 AR-1221-1	5.418	0.000	5703301	0	23.581	N.D. #
9) L2 AR-1221-2	5.464	4.629	6968560	1621691	37.585	71.892 #
10) L2 AR-1221-3	5.562	4.721	26970321	3439255	48.392	49.843
11) L3 AR-1232-1	5.562	4.721	26970321	3439255	68.926	72.211
12) L3 AR-1232-2	0.000	5.534	0	397266	N.D.	7.851 #
14) L3 AR-1232-4	0.000	5.855	0	36443979	N.D.	1537.701 #
15) L3 AR-1232-5	6.700	6.084	188.8E6	23875477	1291.794	887.386 #
16) L4 AR-1242-1	0.000	5.534	0	397266	N.D.	5.298 #
17) L4 AR-1242-2	0.000	5.534	0	397266	N.D.	3.930 #
19) L4 AR-1242-4	6.700	5.855	188.8E6	36443979	440.913	686.055 #
20) L4 AR-1242-5	7.384	6.424	12675541	5620211	26.980	78.052 #
21) L5 AR-1248-1	0.000	5.534	0	397266	N.D.	6.614 #
22) L5 AR-1248-2	6.700	5.855	188.8E6	36443979	293.453	470.022 #
23) L5 AR-1248-3	6.984	5.855	6526218	36443979	9.046	456.193 #
24) L5 AR-1248-4	7.384	6.084	12675541	23875477	15.618	252.371 #
25) L5 AR-1248-5	7.384	6.512	12675541	3741313	16.426	35.516 #
26) L6 AR-1254-1	7.341	6.424	8255243	5620211	10.692	37.655 #
27) L6 AR-1254-2	7.593	6.638	51569219	4817676	43.733	37.512
28) L6 AR-1254-3	7.909	7.017	16762573	2085658	14.362	9.817 #
29) L6 AR-1254-4	8.313	7.244	55529195	1950290	59.345	14.395 #
30) L6 AR-1254-5	8.686	7.691	144.9E6	219.4E6	172.672	1194.261 #
31) L7 AR-1260-1	8.111	7.172	12519083	6242361	11.968	35.690 #
32) L7 AR-1260-2	8.396	7.344	124.6E6	4135770	90.674	19.193 #
33) L7 AR-1260-3	8.753	7.472	12155567	3249606	11.283	16.158 #
34) L7 AR-1260-4	9.018	7.961	20434459	11780319	20.484	67.193 #
35) L7 AR-1260-5	9.372	8.224	156.1E6	2509608	75.089	5.760 #
36) L8 AR-1262-1	8.753	7.691	12155567	219.4E6	9.347	2030.532 #
37) L8 AR-1262-2	9.372	8.224	156.1E6	2509608	80.320	6.339 #
38) L8 AR-1262-3	9.651	8.476	38242179	6258029	31.289	41.822 #
39) L8 AR-1262-4	0.000	8.571	0	14765787	N.D.	51.979 #
40) L8 AR-1262-5	10.418	9.113	15337130	8573400	27.139	66.139 #
41) L9 AR-1268-1	9.651	8.476	38242179	6258029	17.975	14.533
42) L9 AR-1268-2	0.000	8.571	0	14765787	N.D.	37.643 #
43) L9 AR-1268-3	9.971	8.775	38163739	6055595	25.637	19.020 #
44) L9 AR-1268-4	10.418	9.113	15337130	8573400	25.201	61.682 #

Data Path : Z:\pestpcbsrv\HPCHEM1\ECD_Q\Data\PQ032620\
 Data File : PQ047087.D
 Signal(s) : Signal #1: ECD1A.ch Signal #2: ECD2B.ch
 Acq On : 26 Mar 2020 18:18
 Operator : AJ\MA
 Sample : L2027-02 2X
 Misc :
 ALS Vial : 19 Sample Multiplier: 1

Instrument :
 ECD_Q
 ClientSampleId :
 03-24-B

Integration File signal 1: autoint1.e
 Integration File signal 2: autoint2.e
 Quant Time: Mar 27 04:50:53 2020
 Quant Method : Z:\pestpcbsrv\HPCHEM1\ECD_Q\Method\PQ031720.M
 Quant Title : GC EXTRACTABLES
 QLast Update : Tue Mar 17 15:09:31 2020
 Response via : Initial Calibration
 Integrator: ChemStation

Volume Inj. : 2 µl
 Signal #1 Phase : ZB-MR1 Signal #2 Phase: ZB-MR2
 Signal #1 Info : 30Mx0.32mmx 0.50µ Signal #2 Info : 30M x 0.32mm x 0.25µm

	Compound	RT#1	RT#2	Resp#1	Resp#2	ng/ml	ng/ml
45)	L9 AR-1268-5	10.801	9.421	105.7E6	29614700	28.182	29.400

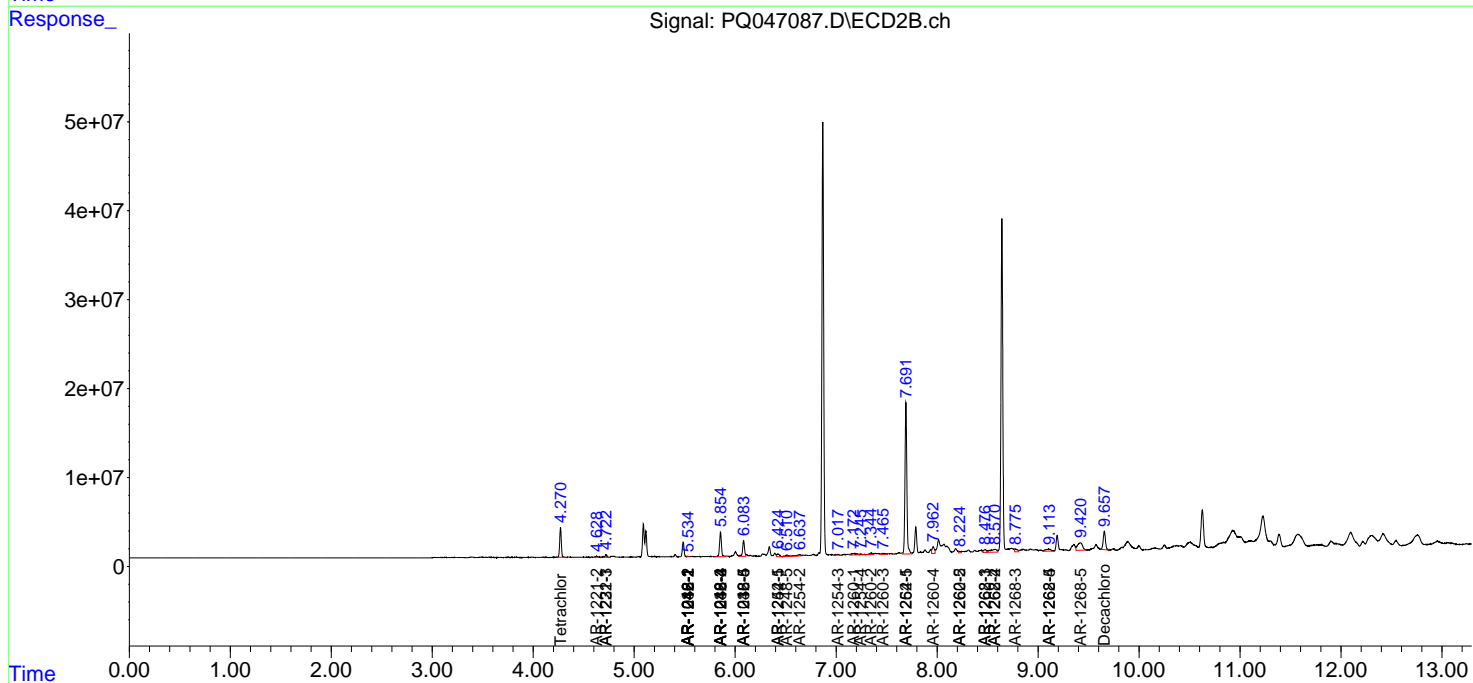
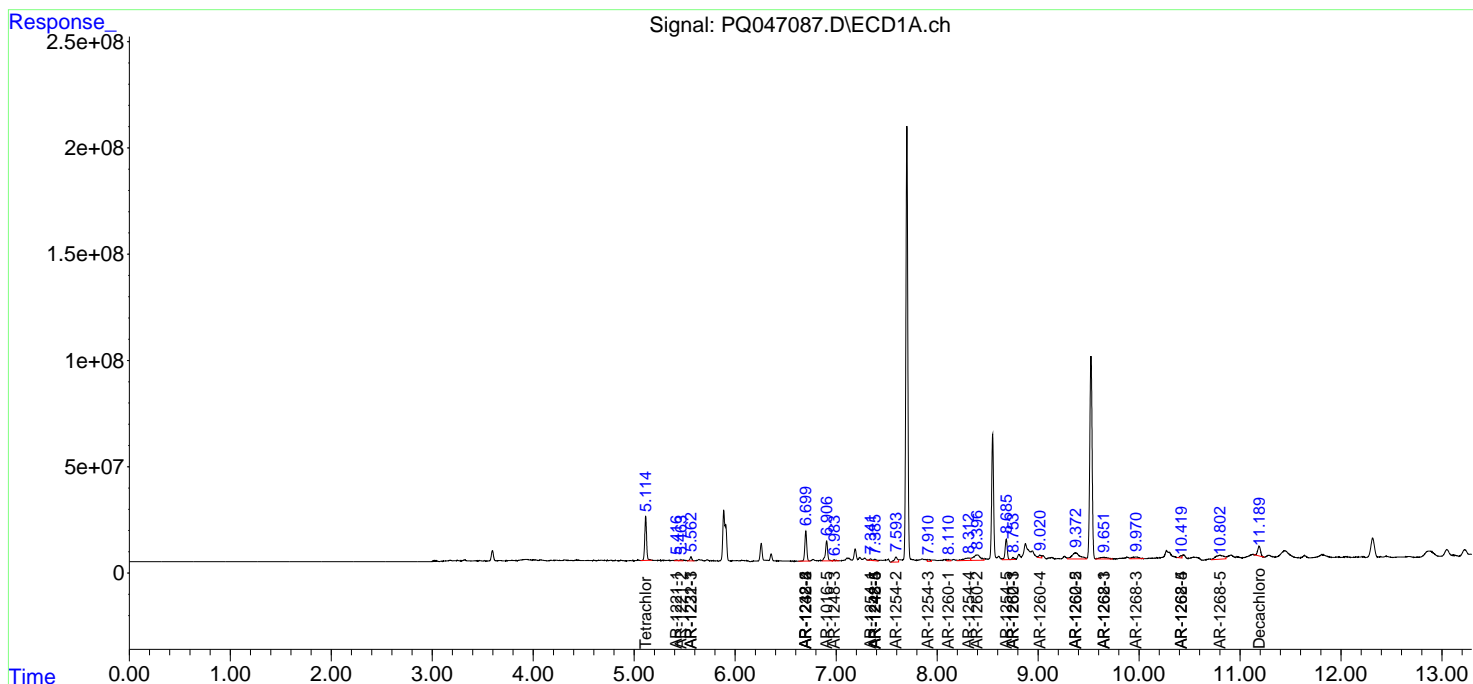
(f)=RT Delta > 1/2 Window (#)=Amounts differ by > 25% (m)=manual int.

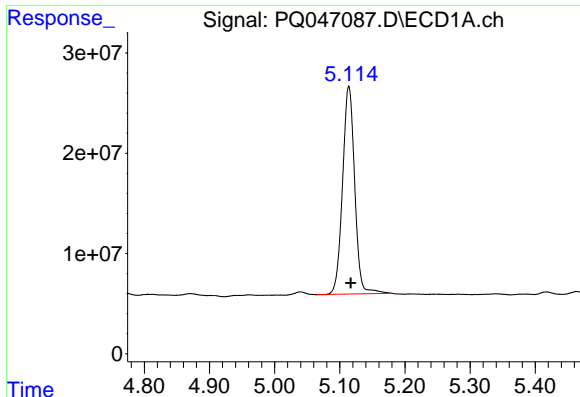
Data Path : Z:\pestpcbsrv\HPCHEM1\ECD_Q\Data\PQ032620\
 Data File : PQ047087.D
 Signal(s) : Signal #1: ECD1A.ch Signal #2: ECD2B.ch
 Acq On : 26 Mar 2020 18:18
 Operator : AJ\MA
 Sample : L2027-02 2X
 Misc :
 ALS Vial : 19 Sample Multiplier: 1

Instrument :
 ECD_Q
 ClientSampled :
 03-24-B

Integration File signal 1: autoint1.e
 Integration File signal 2: autoint2.e
 Quant Time: Mar 27 04:50:53 2020
 Quant Method : Z:\pestpcbsrv\HPCHEM1\ECD_Q\Method\PQ031720.M
 Quant Title : GC EXTRACTABLES
 QLast Update : Tue Mar 17 15:09:31 2020
 Response via : Initial Calibration
 Integrator: ChemStation

Volume Inj. : 2 µl
 Signal #1 Phase : ZB-MR1 Signal #2 Phase: ZB-MR2
 Signal #1 Info : 30Mx0.32mmx 0.50µ Signal #2 Info : 30M x 0.32mm x 0.25µm

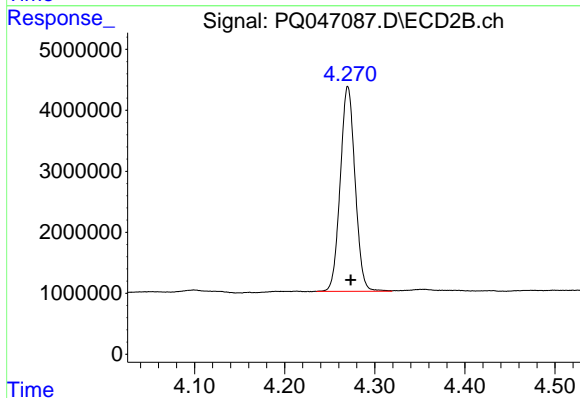




#1 Tetrachloro-m-xylene

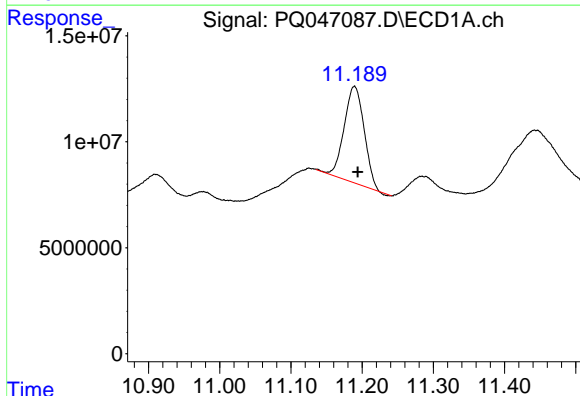
R.T.: 5.114 min
 Delta R.T.: -0.003 min
 Response: 268176189
 Conc: 11.99 ng/ml

Instrument :
 ECD_Q
 ClientSampleId :
 03-24-B



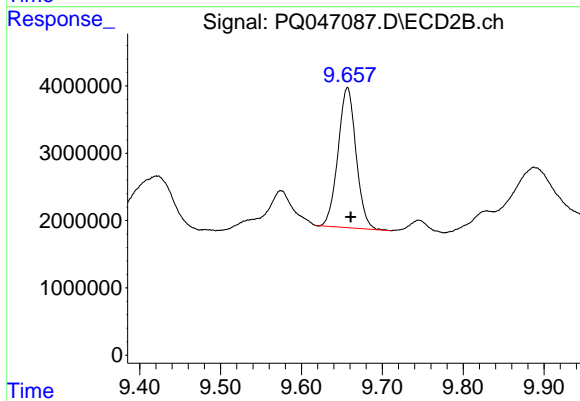
#1 Tetrachloro-m-xylene

R.T.: 4.270 min
 Delta R.T.: -0.003 min
 Response: 38364195
 Conc: 13.37 ng/ml



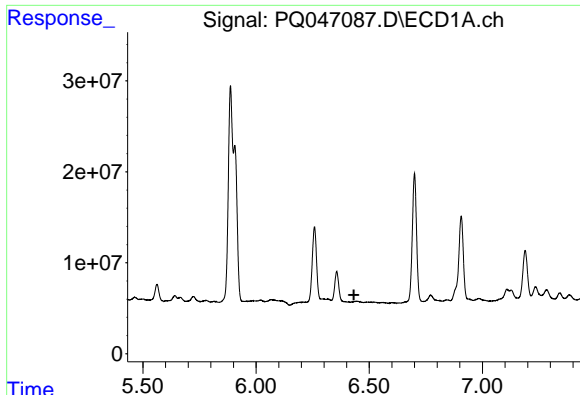
#2 Decachlorobiphenyl

R.T.: 11.189 min
 Delta R.T.: -0.005 min
 Response: 88871106
 Conc: 6.96 ng/ml



#2 Decachlorobiphenyl

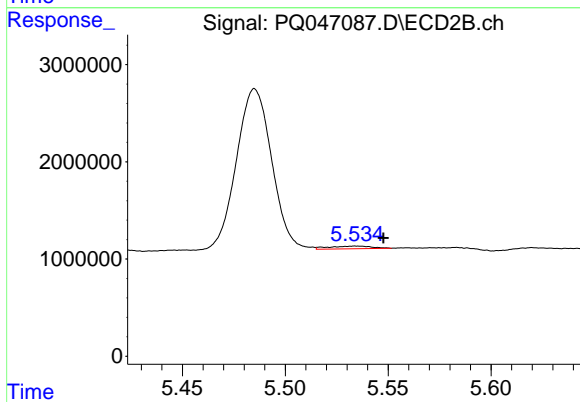
R.T.: 9.657 min
 Delta R.T.: -0.004 min
 Response: 32253913
 Conc: 9.67 ng/ml



#3 AR-1016-1

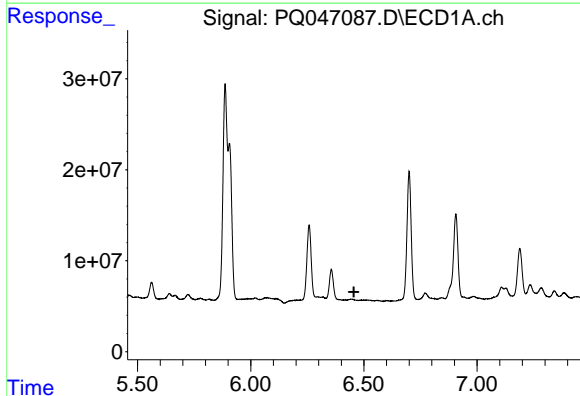
R.T.: 0.000 min
 Exp R.T. : 6.432 min
 Response: 0
 Conc: N.D.

Instrument :
 ECD_Q
 ClientSampled :
 03-24-B



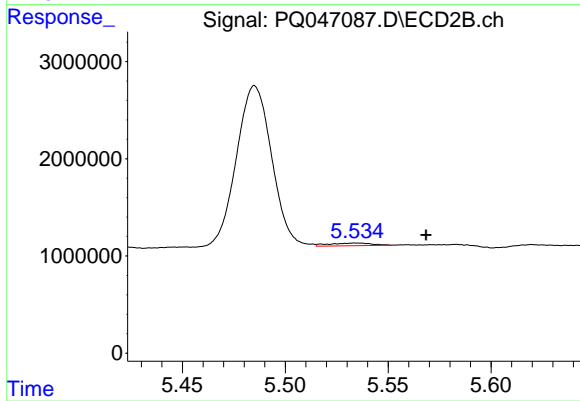
#3 AR-1016-1

R.T.: 5.534 min
 Delta R.T.: -0.013 min
 Response: 397266
 Conc: 3.38 ng/ml



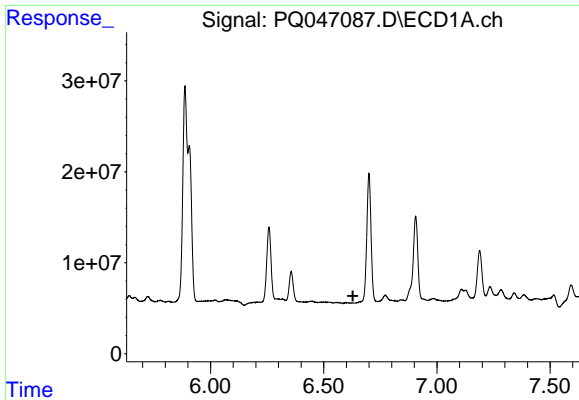
#4 AR-1016-2

R.T.: 0.000 min
 Exp R.T. : 6.456 min
 Response: 0
 Conc: N.D.



#4 AR-1016-2

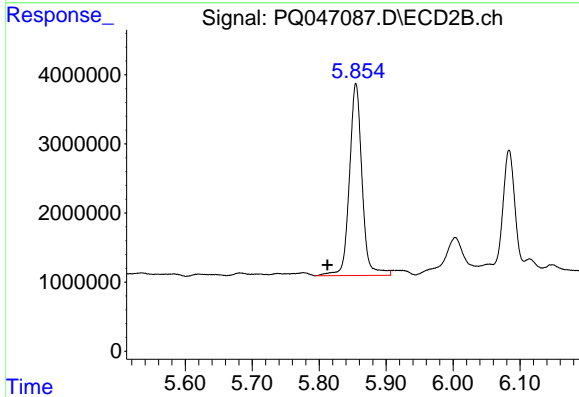
R.T.: 5.534 min
 Delta R.T.: -0.034 min
 Response: 397266
 Conc: 2.49 ng/ml



#6 AR-1016-4

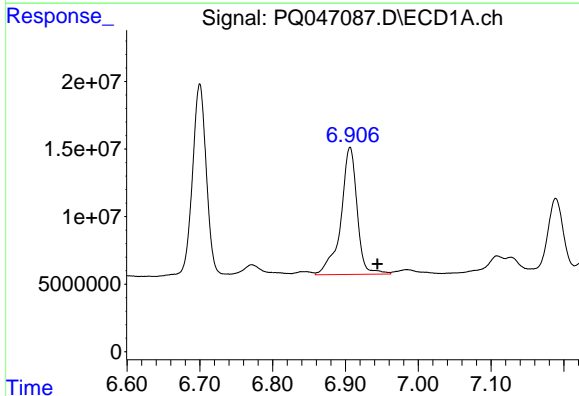
R.T.: 0.000 min
 Exp R.T.: 6.629 min
 Response: 0
 Conc: N.D.

Instrument :
 ECD_Q
 ClientSampled :
 03-24-B



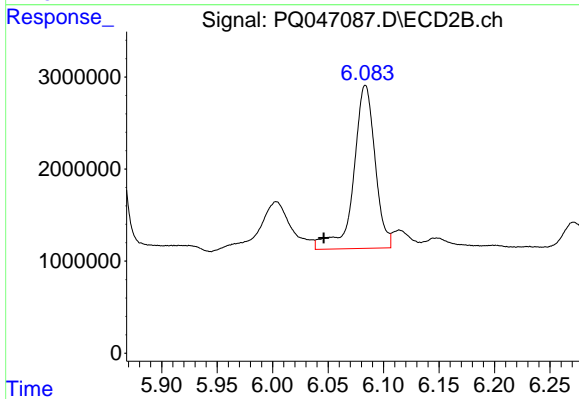
#6 AR-1016-4

R.T.: 5.855 min
 Delta R.T.: 0.043 min
 Response: 36443979
 Conc: 525.32 ng/ml



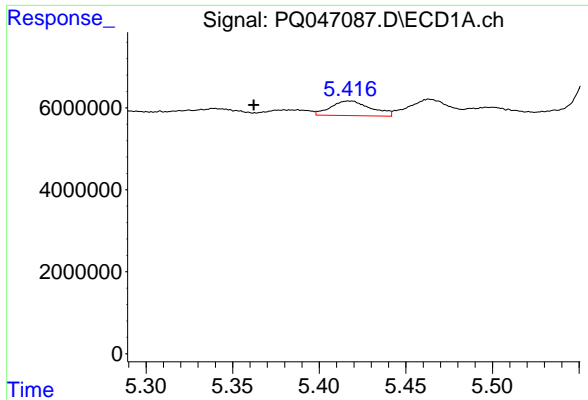
#7 AR-1016-5

R.T.: 6.906 min
 Delta R.T.: -0.038 min
 Response: 146098951
 Conc: 228.71 ng/ml



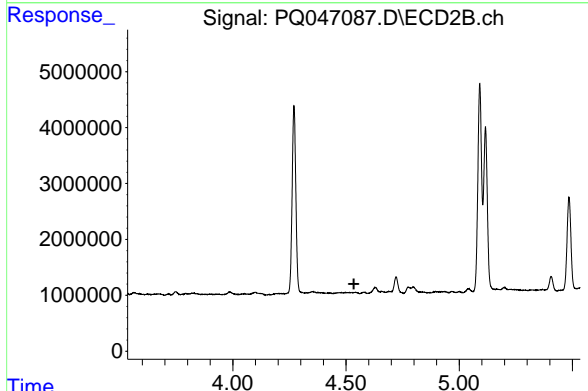
#7 AR-1016-5

R.T.: 6.084 min
 Delta R.T.: 0.038 min
 Response: 23875477
 Conc: 261.53 ng/ml

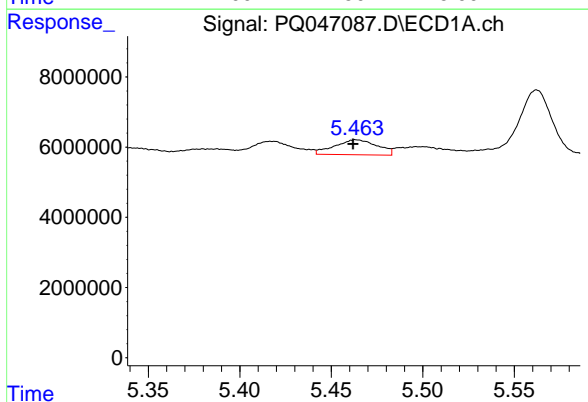


#8 AR-1221-1
 R.T.: 5.418 min
 Delta R.T.: 0.056 min
 Response: 5703301
 Conc: 23.58 ng/ml

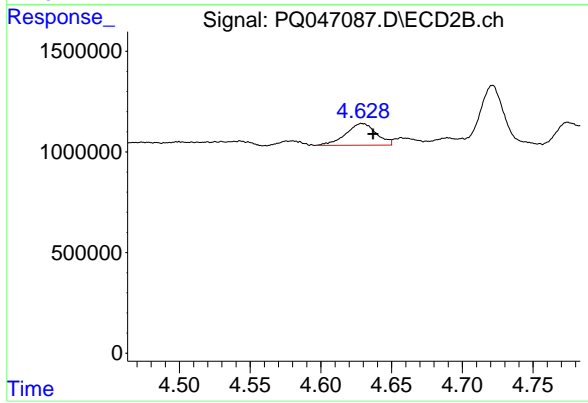
Instrument :
 ECD_Q
ClientSampled :
 03-24-B



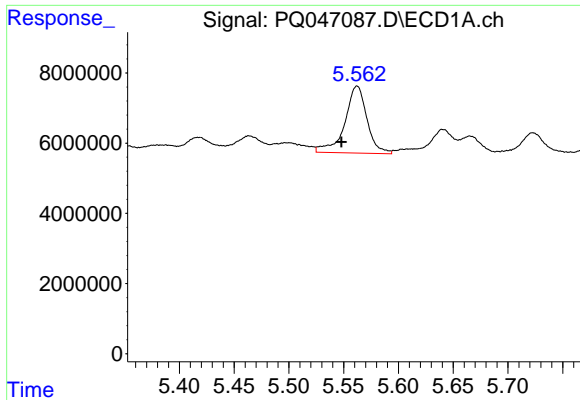
#8 AR-1221-1
 R.T.: 0.000 min
 Exp R.T. : 4.535 min
 Response: 0
 Conc: N.D.



#9 AR-1221-2
 R.T.: 5.464 min
 Delta R.T.: 0.002 min
 Response: 6968560
 Conc: 37.58 ng/ml



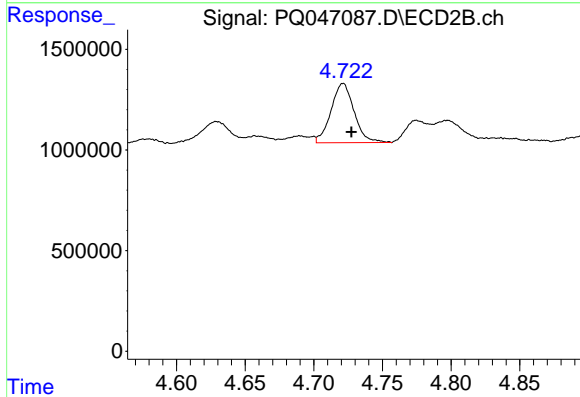
#9 AR-1221-2
 R.T.: 4.629 min
 Delta R.T.: -0.008 min
 Response: 1621691
 Conc: 71.89 ng/ml



#10 AR-1221-3

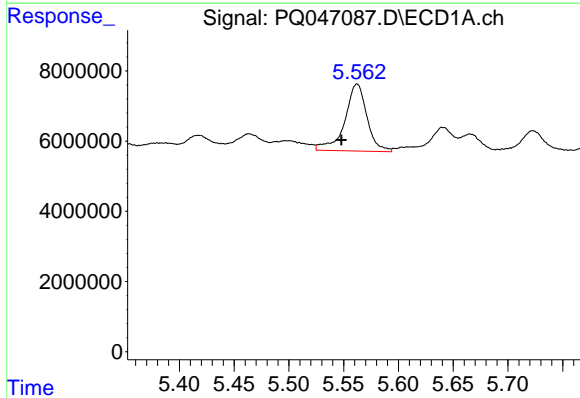
R.T.: 5.562 min
 Delta R.T.: 0.014 min
 Response: 26970321
 Conc: 48.39 ng/ml

Instrument :
 ECD_Q
 ClientSampleId :
 03-24-B



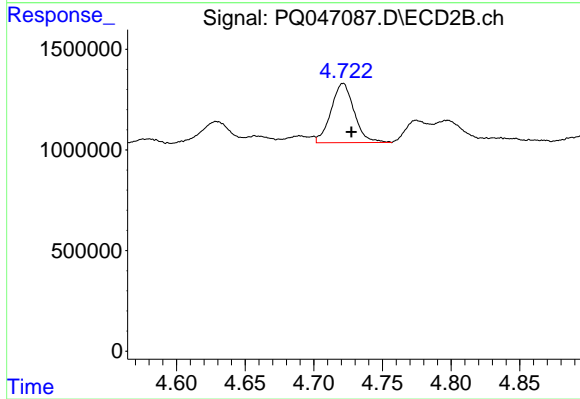
#10 AR-1221-3

R.T.: 4.721 min
 Delta R.T.: -0.006 min
 Response: 3439255
 Conc: 49.84 ng/ml



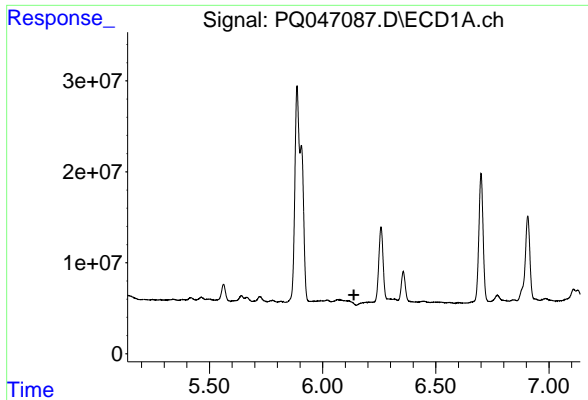
#11 AR-1232-1

R.T.: 5.562 min
 Delta R.T.: 0.014 min
 Response: 26970321
 Conc: 68.93 ng/ml



#11 AR-1232-1

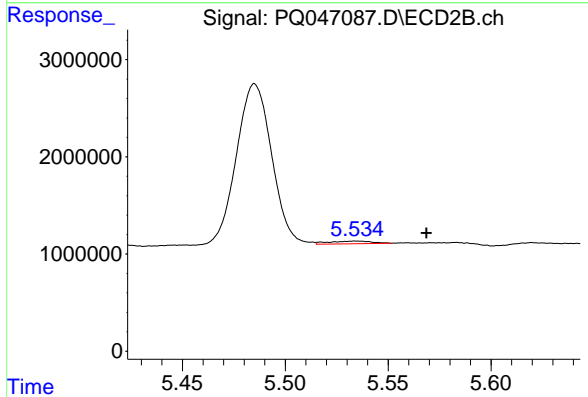
R.T.: 4.721 min
 Delta R.T.: -0.006 min
 Response: 3439255
 Conc: 72.21 ng/ml



#12 AR-1232-2

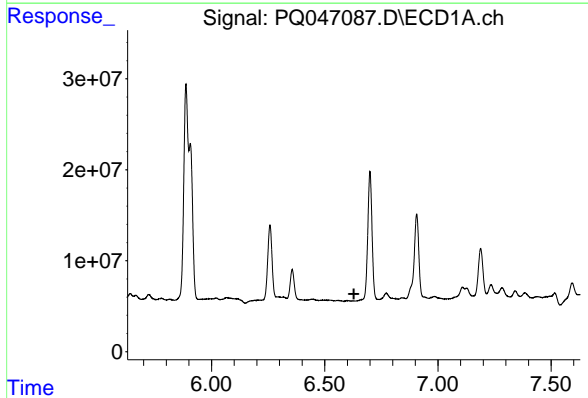
R.T.: 0.000 min
 Exp R.T. : 6.138 min
 Response: 0
 Conc: N.D.

Instrument :
 ECD_Q
 ClientSampleId :
 03-24-B



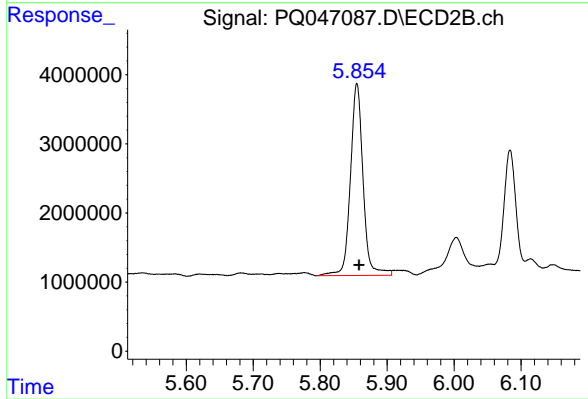
#12 AR-1232-2

R.T.: 5.534 min
 Delta R.T.: -0.034 min
 Response: 397266
 Conc: 7.85 ng/ml



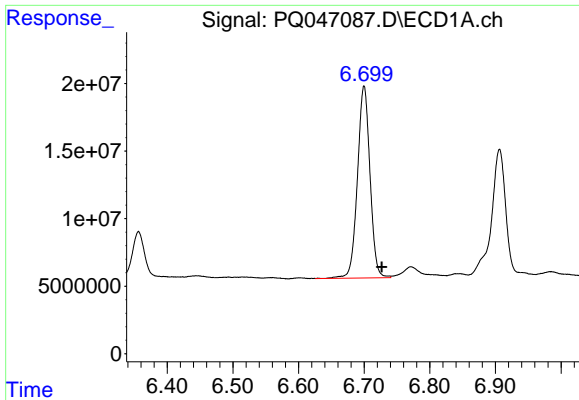
#14 AR-1232-4

R.T.: 0.000 min
 Exp R.T. : 6.629 min
 Response: 0
 Conc: N.D.



#14 AR-1232-4

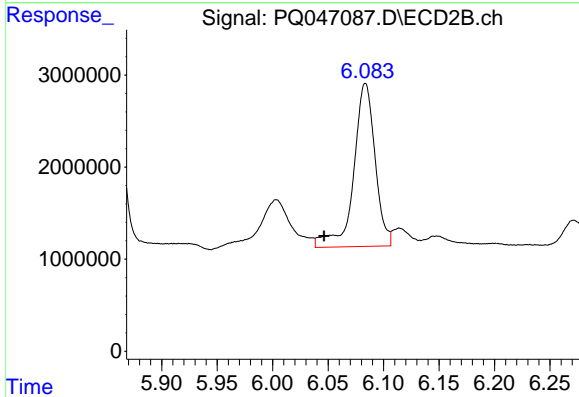
R.T.: 5.855 min
 Delta R.T.: -0.003 min
 Response: 36443979
 Conc: 1537.70 ng/ml



#15 AR-1232-5

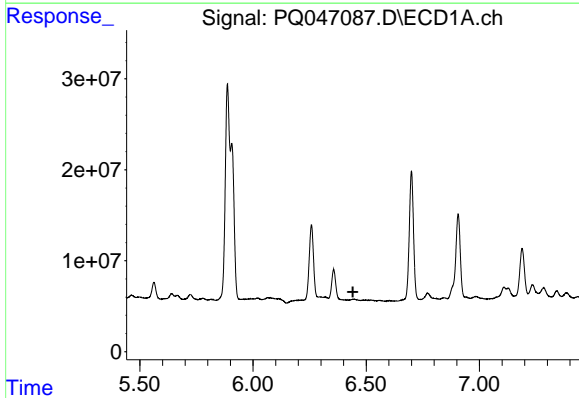
R.T.: 6.700 min
 Delta R.T.: -0.027 min
 Response: 188805981
 Conc: 1291.79 ng/ml

Instrument :
 ECD_Q
 ClientSampled :
 03-24-B



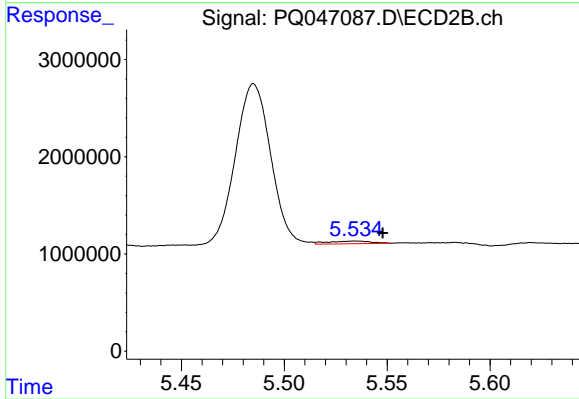
#15 AR-1232-5

R.T.: 6.084 min
 Delta R.T.: 0.037 min
 Response: 23875477
 Conc: 887.39 ng/ml



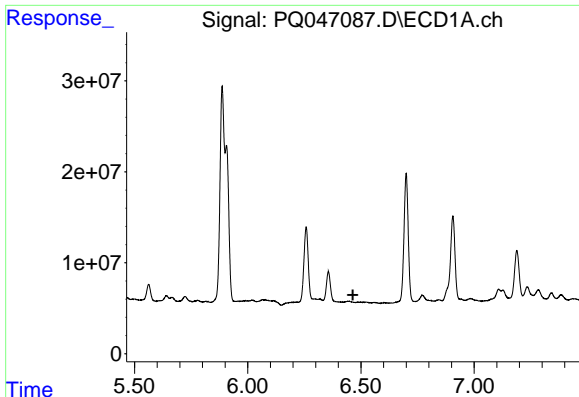
#16 AR-1242-1

R.T.: 0.000 min
 Exp R.T. : 6.441 min
 Response: 0
 Conc: N.D.



#16 AR-1242-1

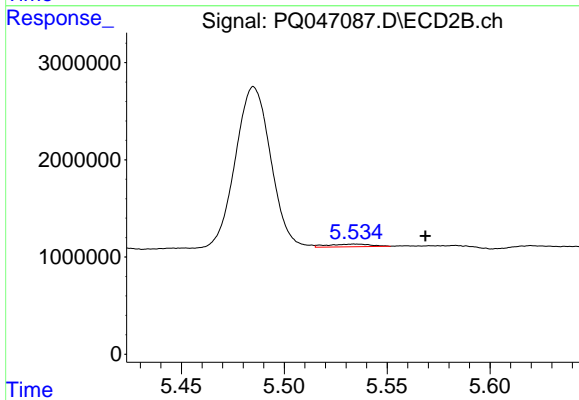
R.T.: 5.534 min
 Delta R.T.: -0.013 min
 Response: 397266
 Conc: 5.30 ng/ml



#17 AR-1242-2

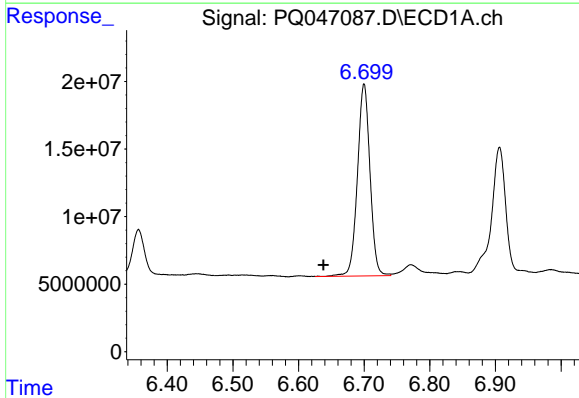
R.T.: 0.000 min
 Exp R.T.: 6.465 min
 Response: 0
 Conc: N.D.

Instrument :
 ECD_Q
 ClientSampled :
 03-24-B



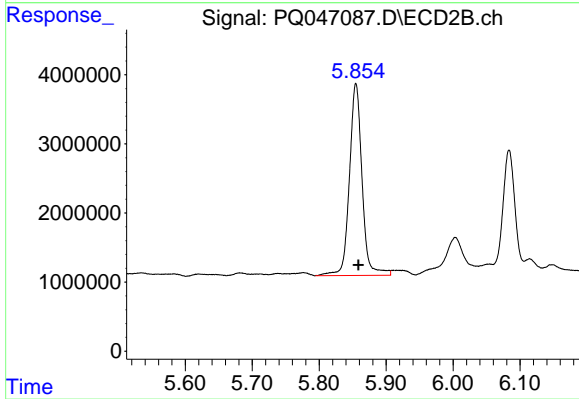
#17 AR-1242-2

R.T.: 5.534 min
 Delta R.T.: -0.034 min
 Response: 397266
 Conc: 3.93 ng/ml



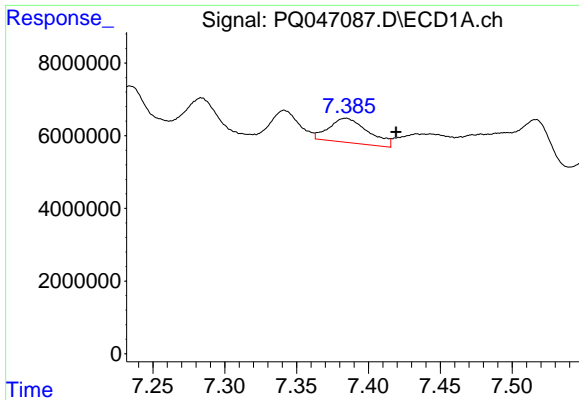
#19 AR-1242-4

R.T.: 6.700 min
 Delta R.T.: 0.062 min
 Response: 188805981
 Conc: 440.91 ng/ml



#19 AR-1242-4

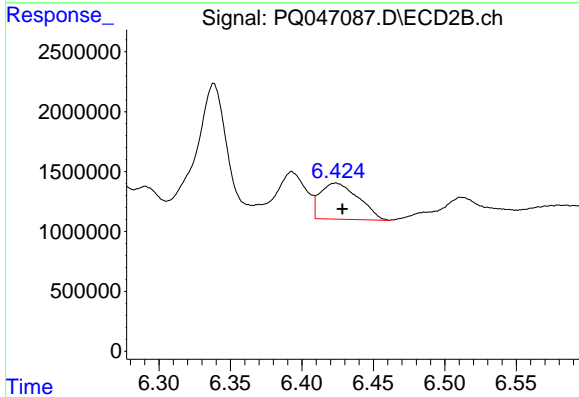
R.T.: 5.855 min
 Delta R.T.: -0.003 min
 Response: 36443979
 Conc: 686.05 ng/ml



#20 AR-1242-5

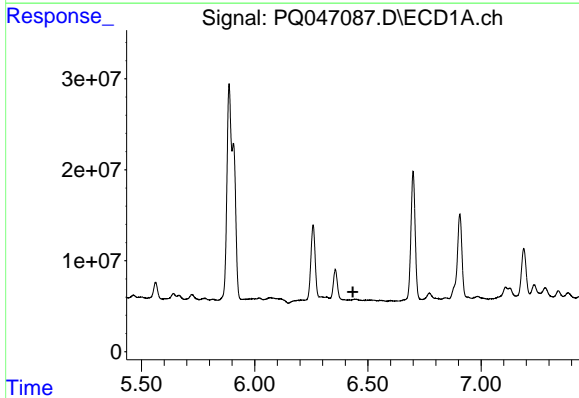
R.T.: 7.384 min
 Delta R.T.: -0.035 min
 Response: 12675541
 Conc: 26.98 ng/ml

Instrument :
 ECD_Q
 ClientSampled :
 03-24-B



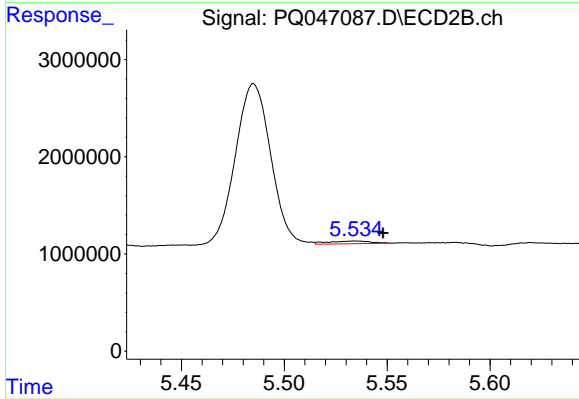
#20 AR-1242-5

R.T.: 6.424 min
 Delta R.T.: -0.005 min
 Response: 5620211
 Conc: 78.05 ng/ml



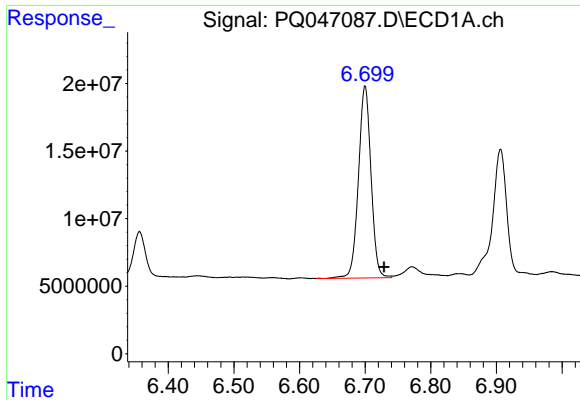
#21 AR-1248-1

R.T.: 0.000 min
 Exp R.T. : 6.434 min
 Response: 0
 Conc: N.D.



#21 AR-1248-1

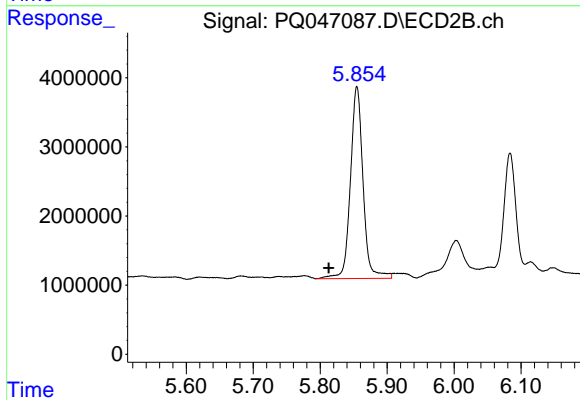
R.T.: 5.534 min
 Delta R.T.: -0.014 min
 Response: 397266
 Conc: 6.61 ng/ml



#22 AR-1248-2

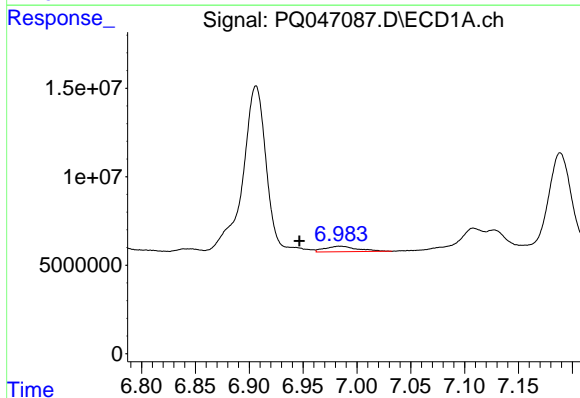
R.T.: 6.700 min
 Delta R.T.: -0.029 min
 Response: 188805981
 Conc: 293.45 ng/ml

Instrument :
 ECD_Q
 ClientSampled :
 03-24-B



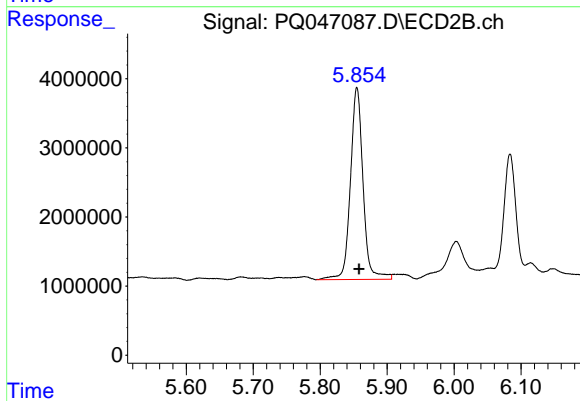
#22 AR-1248-2

R.T.: 5.855 min
 Delta R.T.: 0.042 min
 Response: 36443979
 Conc: 470.02 ng/ml



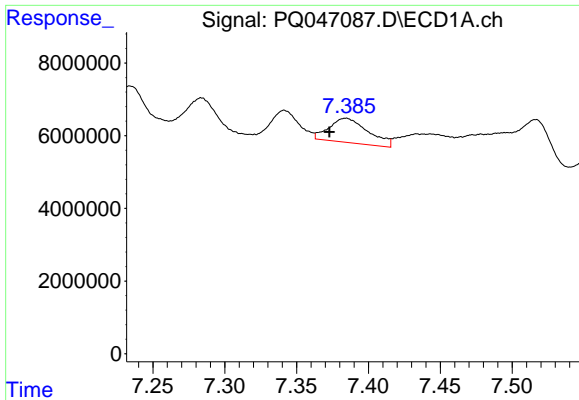
#23 AR-1248-3

R.T.: 6.984 min
 Delta R.T.: 0.038 min
 Response: 6526218
 Conc: 9.05 ng/ml



#23 AR-1248-3

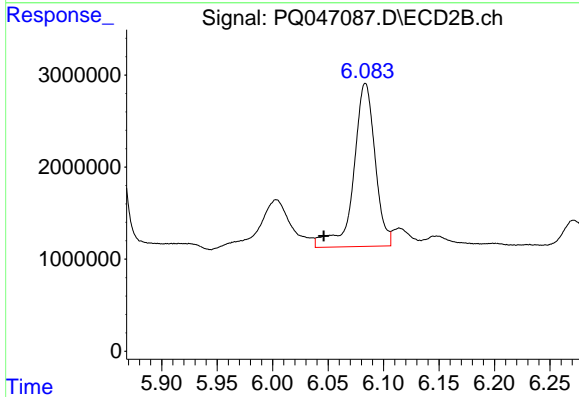
R.T.: 5.855 min
 Delta R.T.: -0.003 min
 Response: 36443979
 Conc: 456.19 ng/ml



#24 AR-1248-4

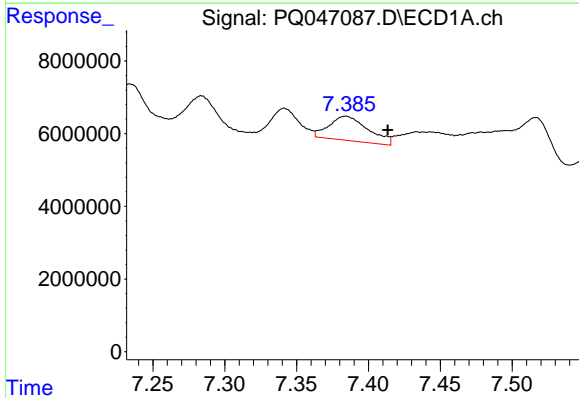
R.T.: 7.384 min
 Delta R.T.: 0.011 min
 Response: 12675541
 Conc: 15.62 ng/ml

Instrument :
 ECD_Q
 ClientSampled :
 03-24-B



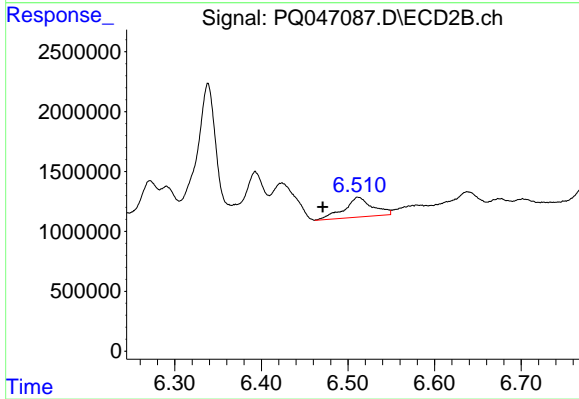
#24 AR-1248-4

R.T.: 6.084 min
 Delta R.T.: 0.037 min
 Response: 23875477
 Conc: 252.37 ng/ml



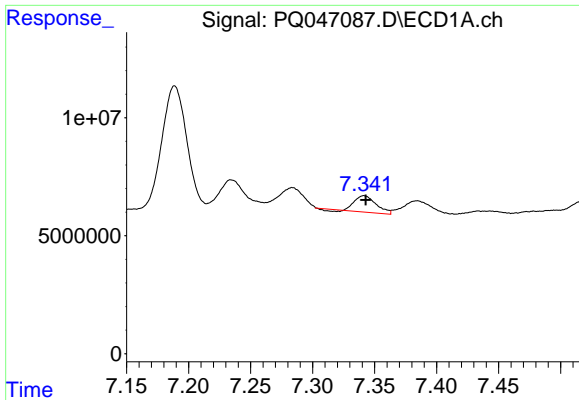
#25 AR-1248-5

R.T.: 7.384 min
 Delta R.T.: -0.029 min
 Response: 12675541
 Conc: 16.43 ng/ml



#25 AR-1248-5

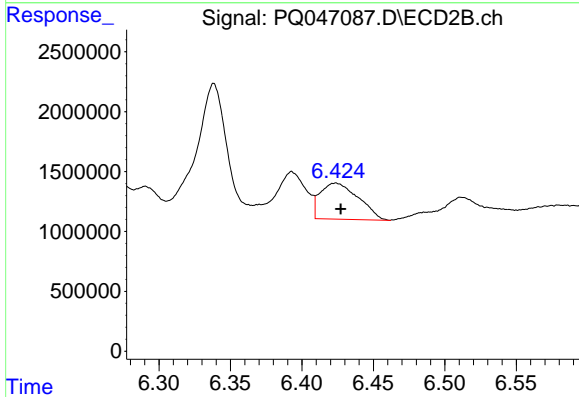
R.T.: 6.512 min
 Delta R.T.: 0.041 min
 Response: 3741313
 Conc: 35.52 ng/ml



#26 AR-1254-1

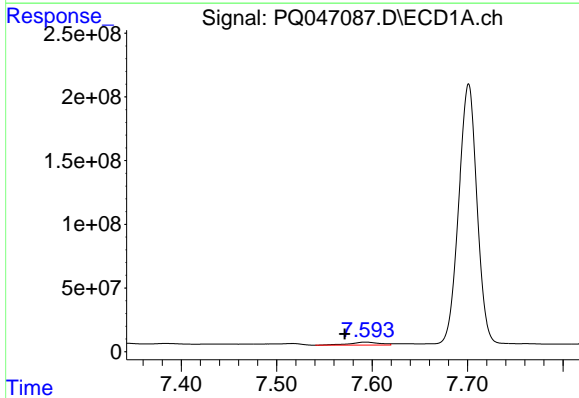
R.T.: 7.341 min
 Delta R.T.: -0.001 min
 Response: 8255243
 Conc: 10.69 ng/ml

Instrument :
 ECD_Q
ClientSampled :
 03-24-B



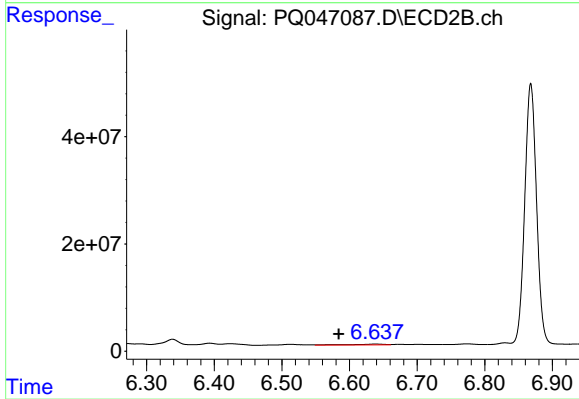
#26 AR-1254-1

R.T.: 6.424 min
 Delta R.T.: -0.004 min
 Response: 5620211
 Conc: 37.65 ng/ml



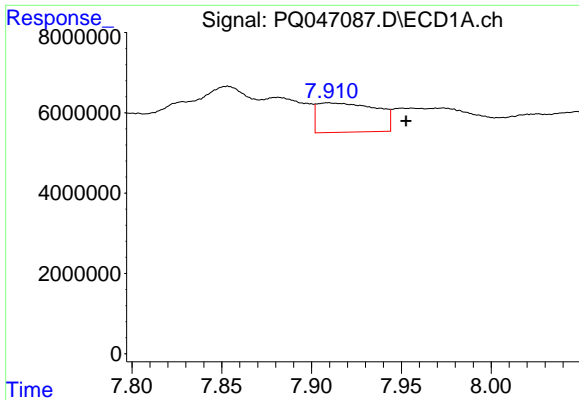
#27 AR-1254-2

R.T.: 7.593 min
 Delta R.T.: 0.022 min
 Response: 51569219
 Conc: 43.73 ng/ml



#27 AR-1254-2

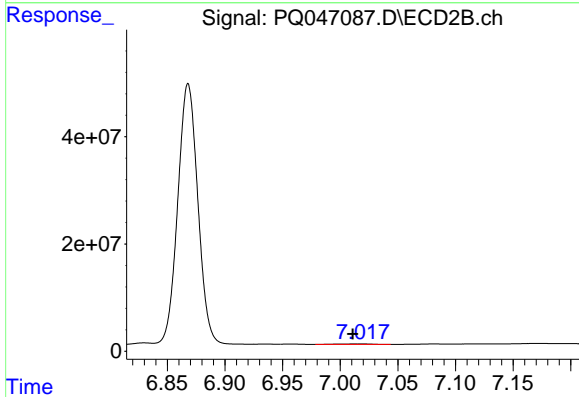
R.T.: 6.638 min
 Delta R.T.: 0.054 min
 Response: 4817676
 Conc: 37.51 ng/ml



#28 AR-1254-3

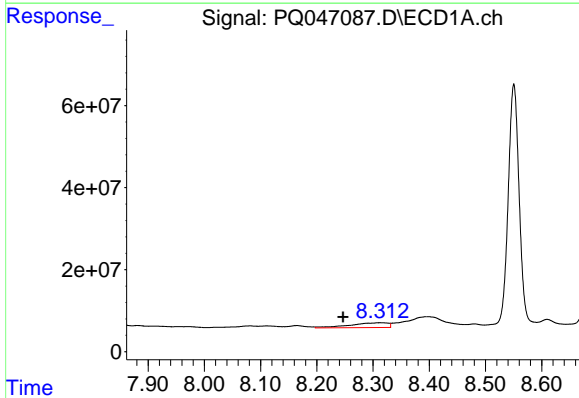
R.T.: 7.909 min
 Delta R.T.: -0.043 min
 Response: 16762573
 Conc: 14.36 ng/ml

Instrument :
 ECD_Q
 ClientSampled :
 03-24-B



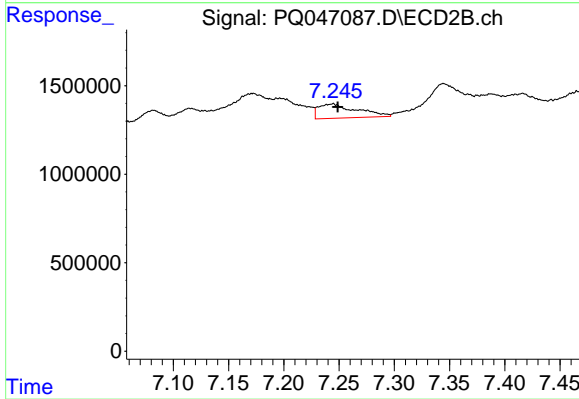
#28 AR-1254-3

R.T.: 7.017 min
 Delta R.T.: 0.006 min
 Response: 2085658
 Conc: 9.82 ng/ml



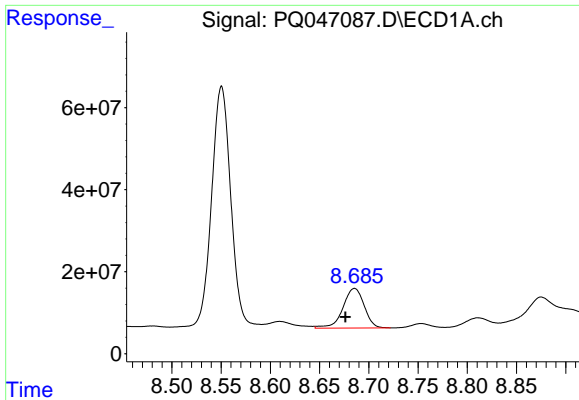
#29 AR-1254-4

R.T.: 8.313 min
 Delta R.T.: 0.066 min
 Response: 55529195
 Conc: 59.35 ng/ml



#29 AR-1254-4

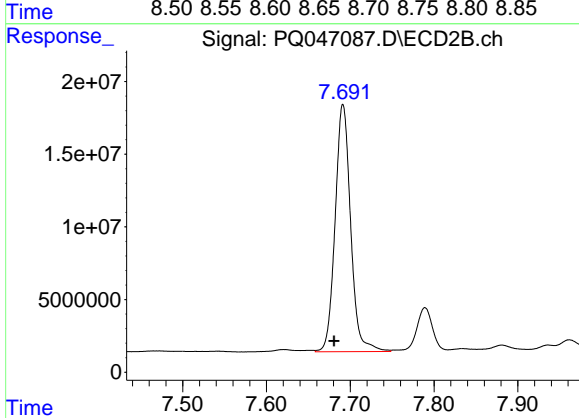
R.T.: 7.244 min
 Delta R.T.: -0.004 min
 Response: 1950290
 Conc: 14.40 ng/ml



#30 AR-1254-5

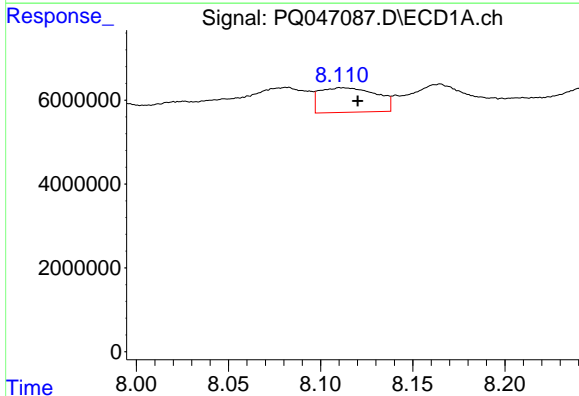
R.T.: 8.686 min
 Delta R.T.: 0.009 min
 Response: 144881676
 Conc: 172.67 ng/ml

Instrument :
 ECD_Q
ClientSampled :
 03-24-B



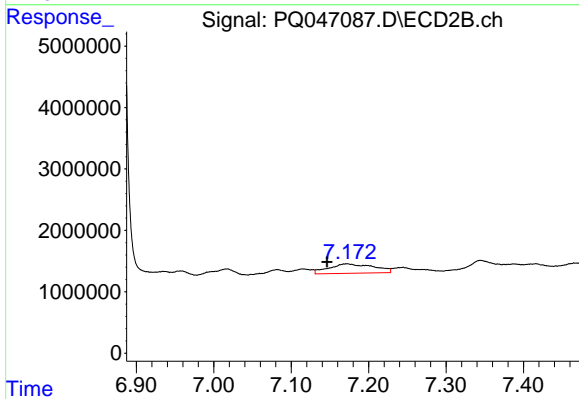
#30 AR-1254-5

R.T.: 7.691 min
 Delta R.T.: 0.010 min
 Response: 219415713
 Conc: 1194.26 ng/ml



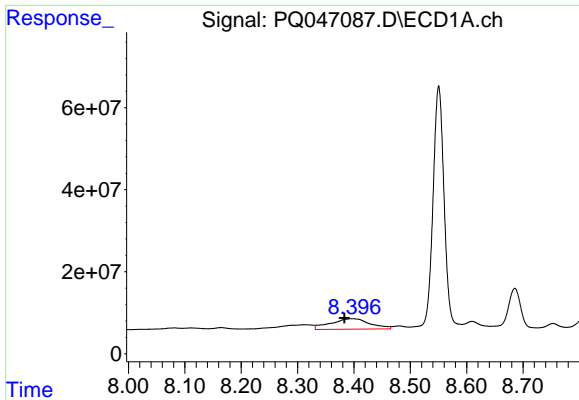
#31 AR-1260-1

R.T.: 8.111 min
 Delta R.T.: -0.009 min
 Response: 12519083
 Conc: 11.97 ng/ml



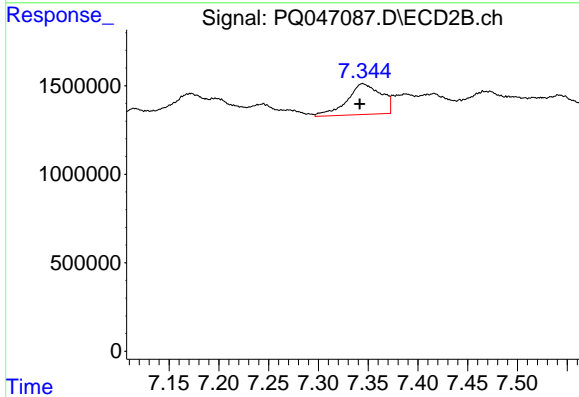
#31 AR-1260-1

R.T.: 7.172 min
 Delta R.T.: 0.026 min
 Response: 6242361
 Conc: 35.69 ng/ml

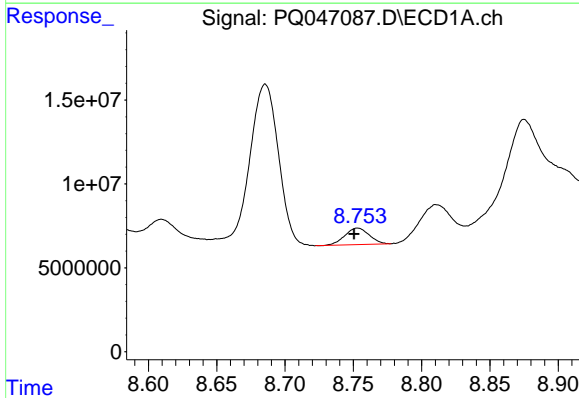


#32 AR-1260-2
 R.T.: 8.396 min
 Delta R.T.: 0.013 min
 Response: 124564633
 Conc: 90.67 ng/ml

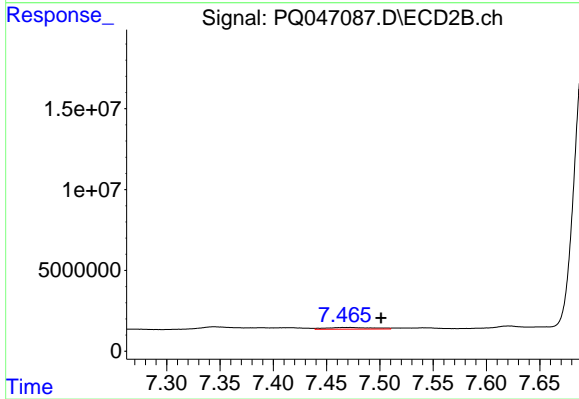
Instrument :
 ECD_Q
ClientSampled :
 03-24-B



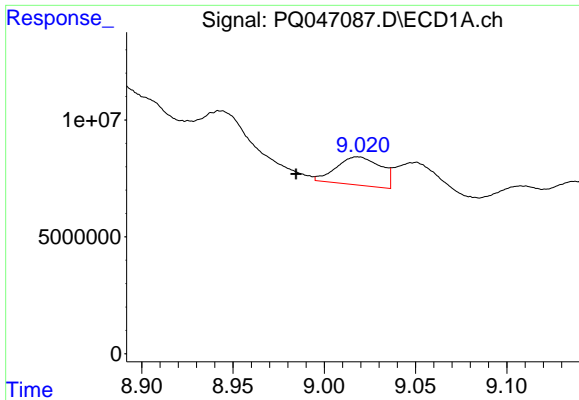
#32 AR-1260-2
 R.T.: 7.344 min
 Delta R.T.: 0.003 min
 Response: 4135770
 Conc: 19.19 ng/ml



#33 AR-1260-3
 R.T.: 8.753 min
 Delta R.T.: 0.003 min
 Response: 12155567
 Conc: 11.28 ng/ml

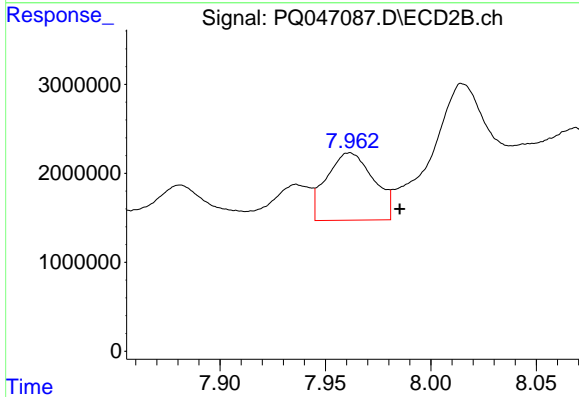


#33 AR-1260-3
 R.T.: 7.472 min
 Delta R.T.: -0.029 min
 Response: 3249606
 Conc: 16.16 ng/ml

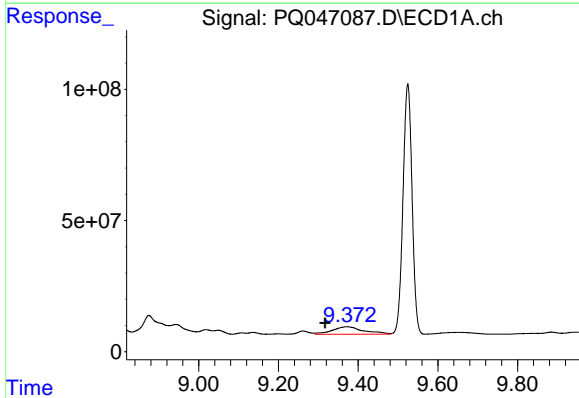


#34 AR-1260-4
 R.T.: 9.018 min
 Delta R.T.: 0.034 min
 Response: 20434459
 Conc: 20.48 ng/ml

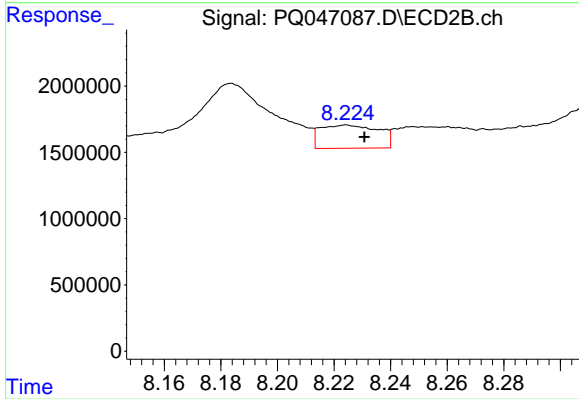
Instrument :
 ECD_Q
 ClientSampled :
 03-24-B



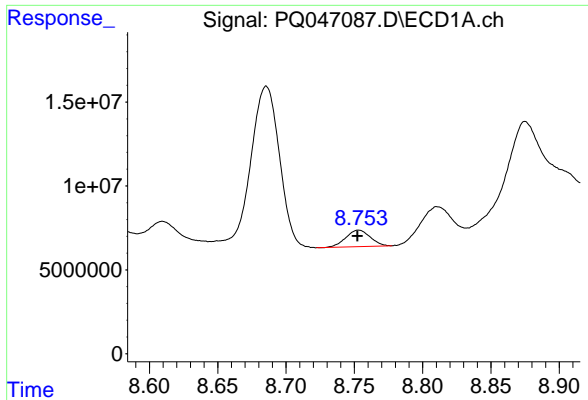
#34 AR-1260-4
 R.T.: 7.961 min
 Delta R.T.: -0.024 min
 Response: 11780319
 Conc: 67.19 ng/ml



#35 AR-1260-5
 R.T.: 9.372 min
 Delta R.T.: 0.055 min
 Response: 156086307
 Conc: 75.09 ng/ml



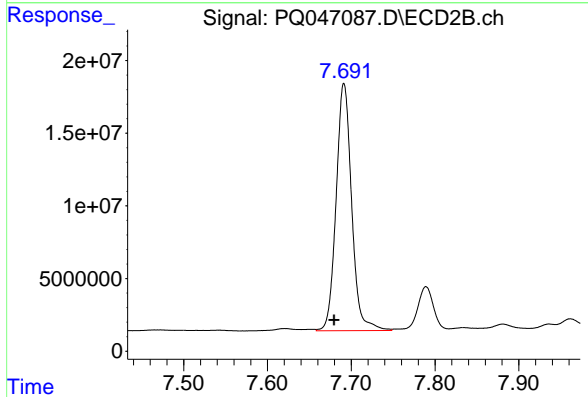
#35 AR-1260-5
 R.T.: 8.224 min
 Delta R.T.: -0.006 min
 Response: 2509608
 Conc: 5.76 ng/ml



#36 AR-1262-1

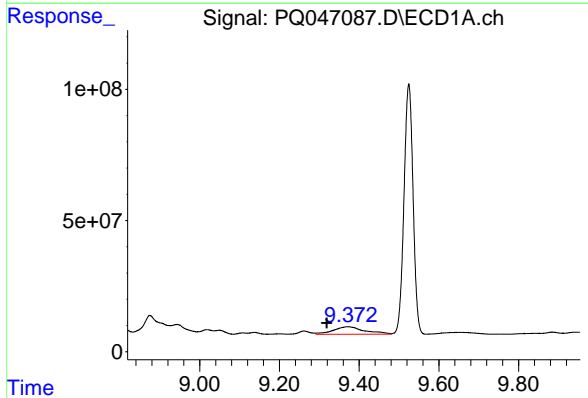
R.T.: 8.753 min
 Delta R.T.: 0.000 min
 Response: 12155567
 Conc: 9.35 ng/ml

Instrument :
 ECD_Q
 ClientSampled :
 03-24-B



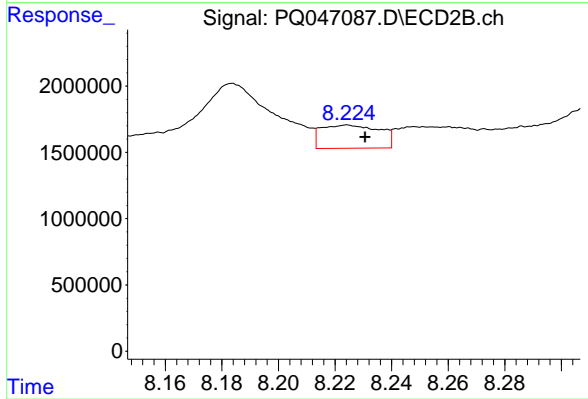
#36 AR-1262-1

R.T.: 7.691 min
 Delta R.T.: 0.012 min
 Response: 219415713
 Conc: 2030.53 ng/ml



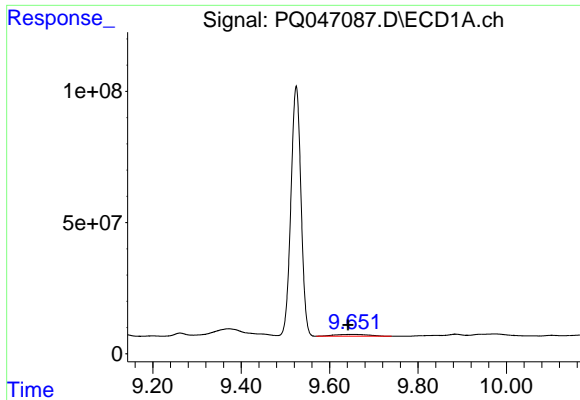
#37 AR-1262-2

R.T.: 9.372 min
 Delta R.T.: 0.053 min
 Response: 156086307
 Conc: 80.32 ng/ml



#37 AR-1262-2

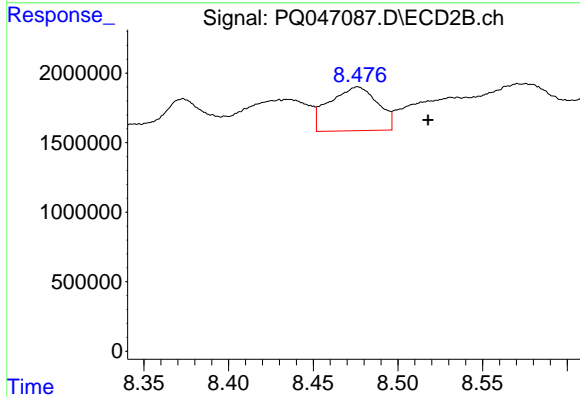
R.T.: 8.224 min
 Delta R.T.: -0.006 min
 Response: 2509608
 Conc: 6.34 ng/ml



#38 AR-1262-3

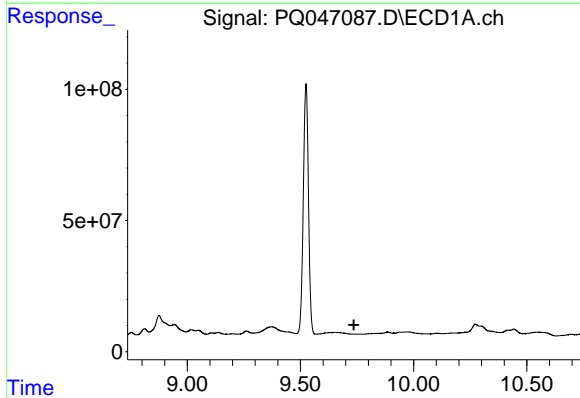
R.T.: 9.651 min
 Delta R.T.: 0.009 min
 Response: 38242179
 Conc: 31.29 ng/ml

Instrument :
 ECD_Q
 ClientSampled :
 03-24-B



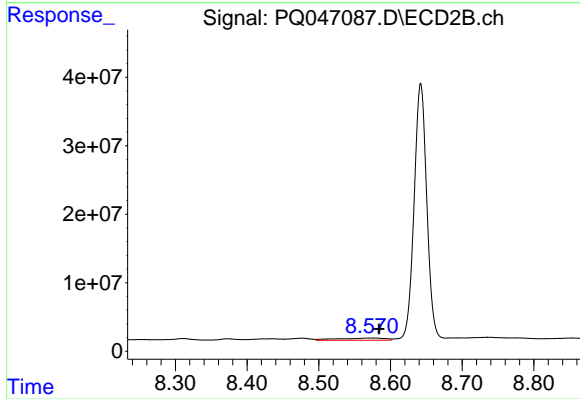
#38 AR-1262-3

R.T.: 8.476 min
 Delta R.T.: -0.042 min
 Response: 6258029
 Conc: 41.82 ng/ml



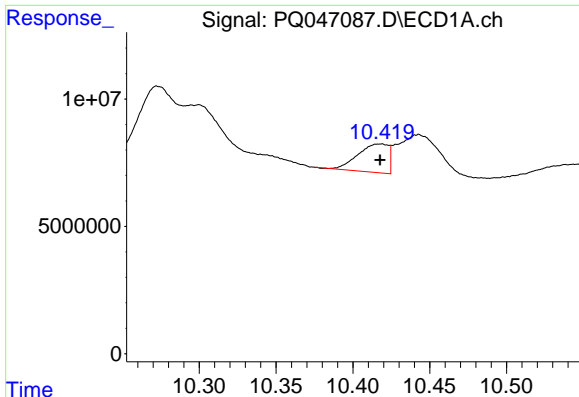
#39 AR-1262-4

R.T.: 0.000 min
 Exp R.T. : 9.736 min
 Response: 0
 Conc: N.D.



#39 AR-1262-4

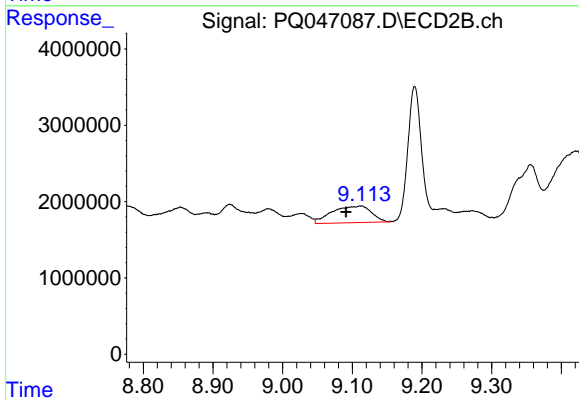
R.T.: 8.571 min
 Delta R.T.: -0.013 min
 Response: 14765787
 Conc: 51.98 ng/ml



#40 AR-1262-5

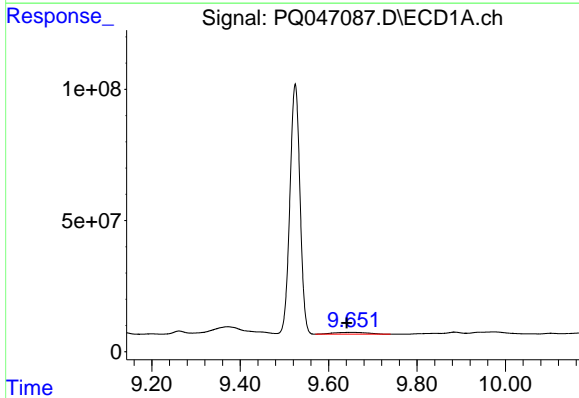
R.T.: 10.418 min
Delta R.T.: 0.000 min
Response: 15337130
Conc: 27.14 ng/ml

Instrument :
ECD_Q
ClientSampled :
03-24-B



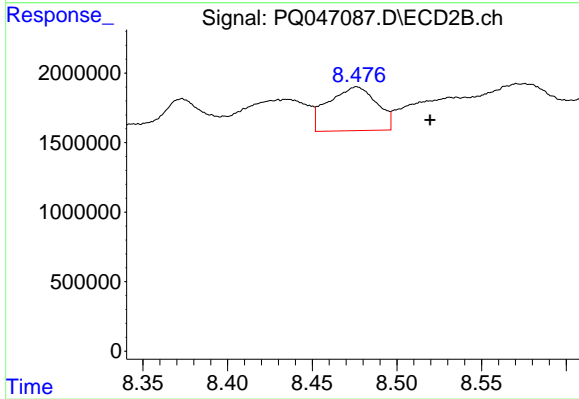
#40 AR-1262-5

R.T.: 9.113 min
Delta R.T.: 0.022 min
Response: 8573400
Conc: 66.14 ng/ml



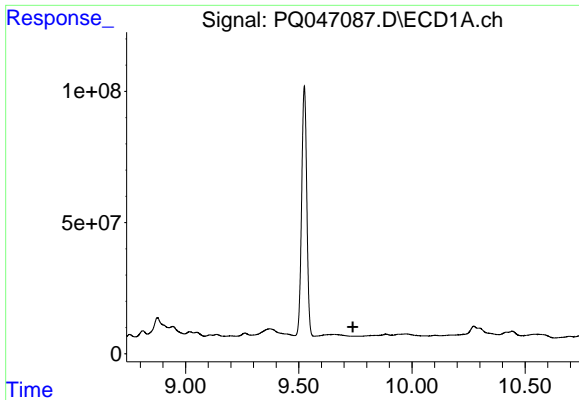
#41 AR-1268-1

R.T.: 9.651 min
Delta R.T.: 0.010 min
Response: 38242179
Conc: 17.97 ng/ml



#41 AR-1268-1

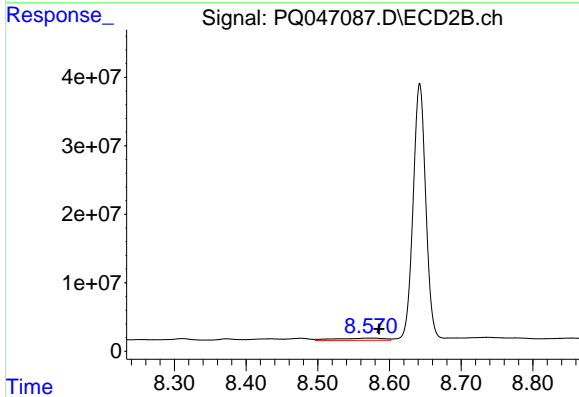
R.T.: 8.476 min
Delta R.T.: -0.043 min
Response: 6258029
Conc: 14.53 ng/ml



#42 AR-1268-2

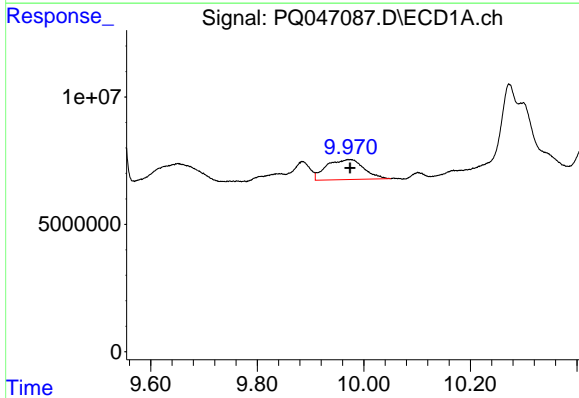
R.T.: 0.000 min
 Exp R.T.: 9.739 min
 Response: 0
 Conc: N.D.

Instrument :
 ECD_Q
 ClientSampled :
 03-24-B



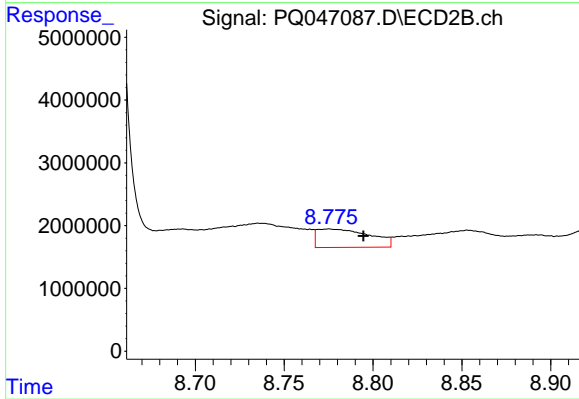
#42 AR-1268-2

R.T.: 8.571 min
 Delta R.T.: -0.014 min
 Response: 14765787
 Conc: 37.64 ng/ml



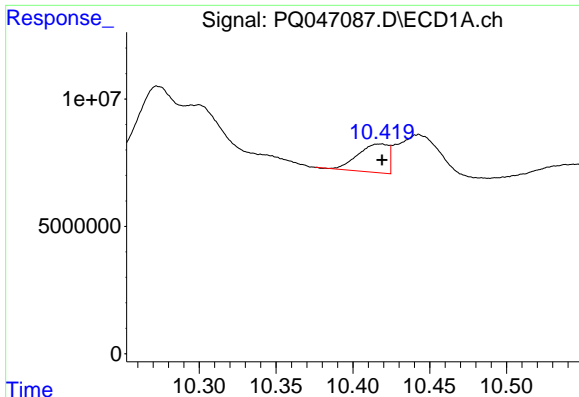
#43 AR-1268-3

R.T.: 9.971 min
 Delta R.T.: -0.003 min
 Response: 38163739
 Conc: 25.64 ng/ml



#43 AR-1268-3

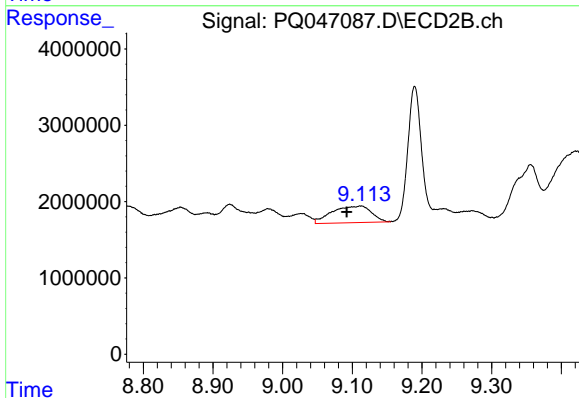
R.T.: 8.775 min
 Delta R.T.: -0.019 min
 Response: 6055595
 Conc: 19.02 ng/ml



#44 AR-1268-4

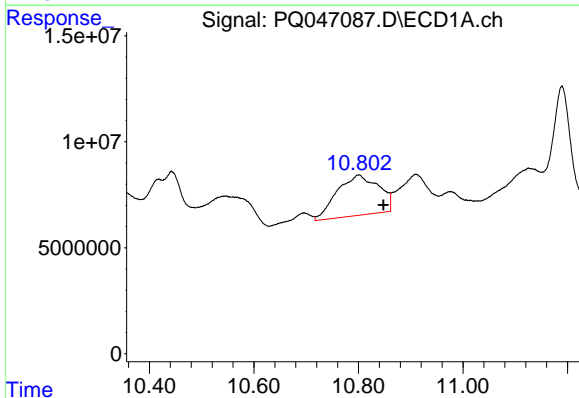
R.T.: 10.418 min
 Delta R.T.: -0.001 min
 Response: 15337130
 Conc: 25.20 ng/ml

Instrument :
 ECD_Q
 ClientSampled :
 03-24-B



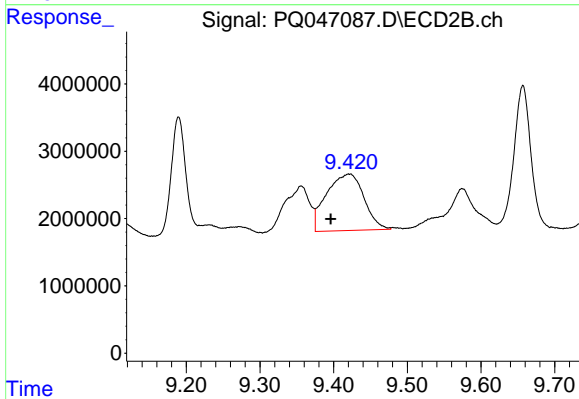
#44 AR-1268-4

R.T.: 9.113 min
 Delta R.T.: 0.020 min
 Response: 8573400
 Conc: 61.68 ng/ml



#45 AR-1268-5

R.T.: 10.801 min
 Delta R.T.: -0.046 min
 Response: 105684775
 Conc: 28.18 ng/ml



#45 AR-1268-5

R.T.: 9.421 min
 Delta R.T.: 0.025 min
 Response: 29614700
 Conc: 29.40 ng/ml