

Data Path : Z:\pestpcbsrv\HPCHEM1\ECD\_Q\Data\PQ040220\  
 Data File : PQ047229.D  
 Signal(s) : Signal #1: ECD1A.ch Signal #2: ECD2B.ch  
 Acq On : 02 Apr 2020 11:36  
 Operator : AJ\MA  
 Sample : L2084-03RE  
 Misc :  
 ALS Vial : 6 Sample Multiplier: 1

**Instrument :**  
 ECD\_Q  
**ClientSampled :**  
 S11-03-A

**Manual Integrations**  
**APPROVED**

Sohil  
 4/3/2020 3:23:45 PM

Integration File signal 1: autoint1.e  
 Integration File signal 2: autoint2.e  
 Quant Time: Apr 02 13:05:54 2020  
 Quant Method : Z:\pestpcbsrv\HPCHEM1\ECD\_Q\Method\PQ033020.M  
 Quant Title : GC EXTRACTABLES  
 QLast Update : Mon Mar 30 14:41:30 2020  
 Response via : Initial Calibration  
 Integrator: ChemStation

Volume Inj. : 2 µl  
 Signal #1 Phase : ZB-MR1 Signal #2 Phase: ZB-MR2  
 Signal #1 Info : 30Mx0.32mmx 0.50µ Signal #2 Info : 30M x 0.32mm x 0.25µm

Compound	RT#1	RT#2	Resp#1	Resp#2	ng/ml	ng/ml
-----						
System Monitoring Compounds						
1) SA Tetrachlo...	5.107	4.263	310.8E6	47129193	17.188	19.586
2) SA Decachlor...	11.184	9.649	116.3E6	33552404	13.720m	14.341

Target Compounds

(f)=RT Delta > 1/2 Window (#)=Amounts differ by > 25% (m)=manual int.

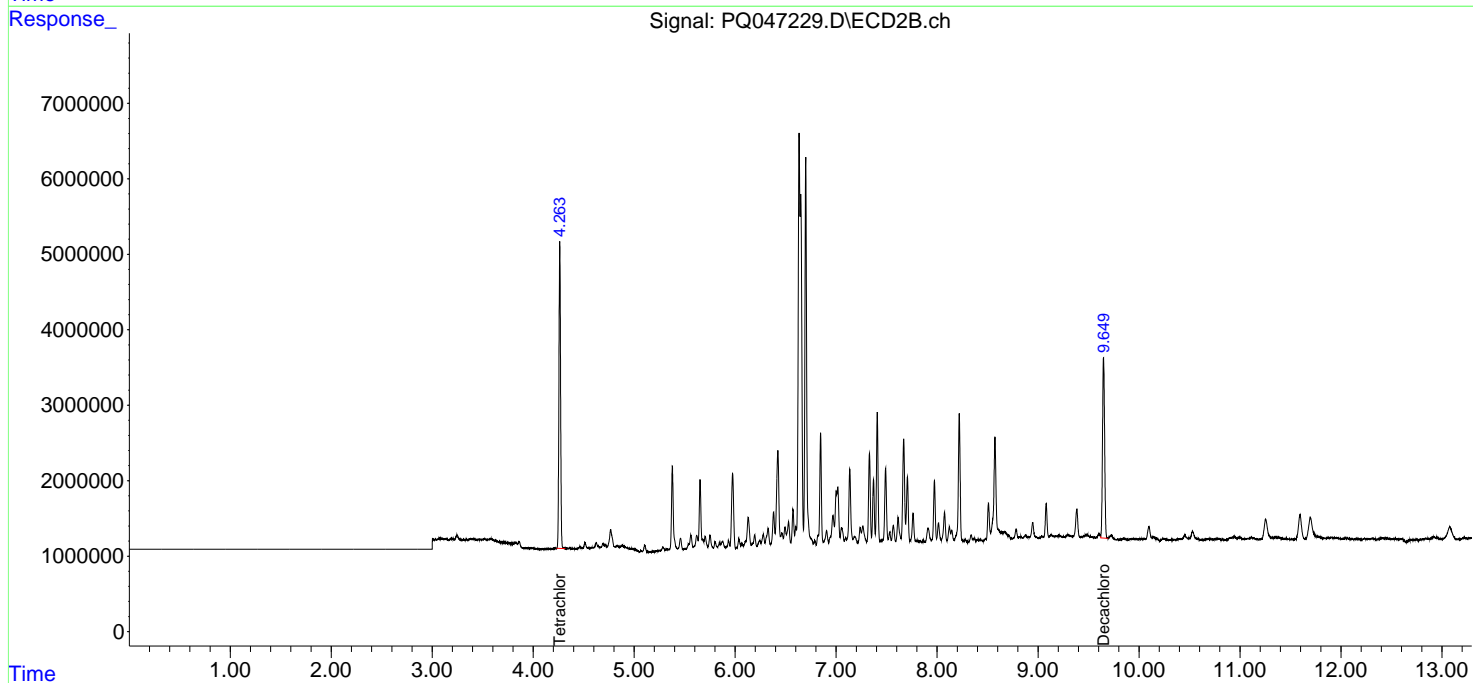
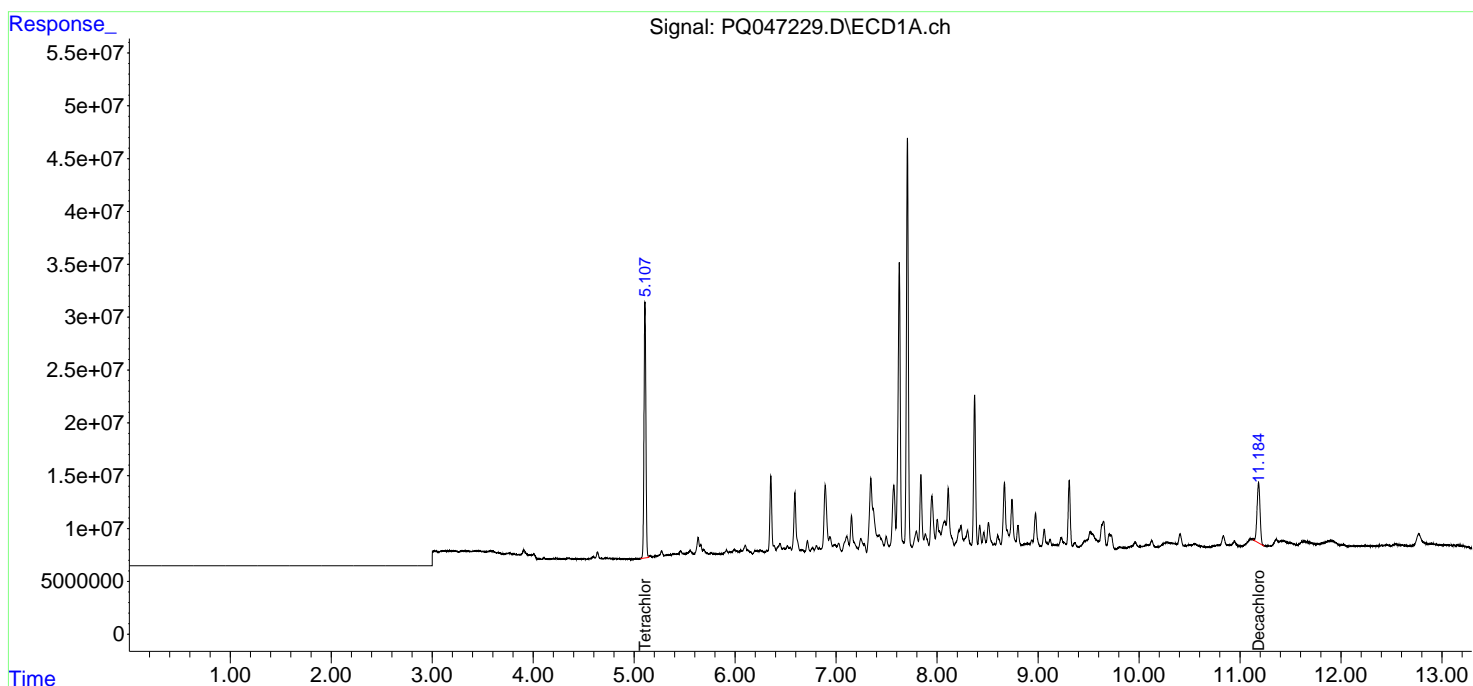
Data Path : Z:\pestpcbsrv\HPCHEM1\ECD\_Q\Data\PQ040220\  
 Data File : PQ047229.D  
 Signal(s) : Signal #1: ECD1A.ch Signal #2: ECD2B.ch  
 Acq On : 02 Apr 2020 11:36  
 Operator : AJ\MA  
 Sample : L2084-03RE  
 Misc :  
 ALS Vial : 6 Sample Multiplier: 1

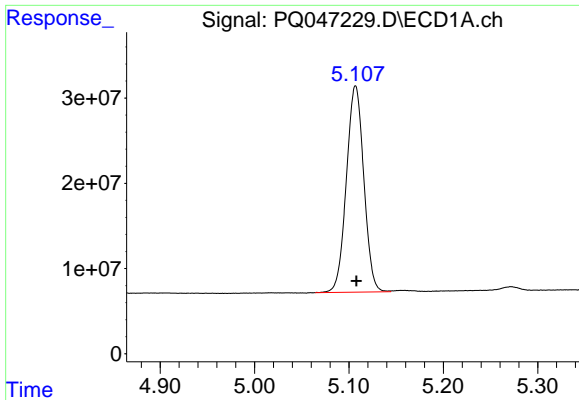
**Instrument :**  
 ECD\_Q  
**ClientSampled :**  
 S11-03-A

**Manual Integrations**  
**APPROVED**  
 Sohil  
 4/3/2020 3:23:45 PM

Integration File signal 1: autoint1.e  
 Integration File signal 2: autoint2.e  
 Quant Time: Apr 02 13:05:54 2020  
 Quant Method : Z:\pestpcbsrv\HPCHEM1\ECD\_Q\Method\PQ033020.M  
 Quant Title : GC EXTRACTABLES  
 QLast Update : Mon Mar 30 14:41:30 2020  
 Response via : Initial Calibration  
 Integrator: ChemStation

Volume Inj. : 2 µl  
 Signal #1 Phase : ZB-MR1 Signal #2 Phase: ZB-MR2  
 Signal #1 Info : 30Mx0.32mmx 0.50µm Signal #2 Info : 30M x 0.32mm x 0.25µm

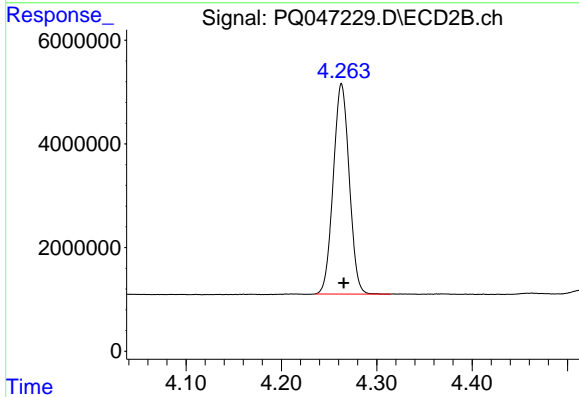




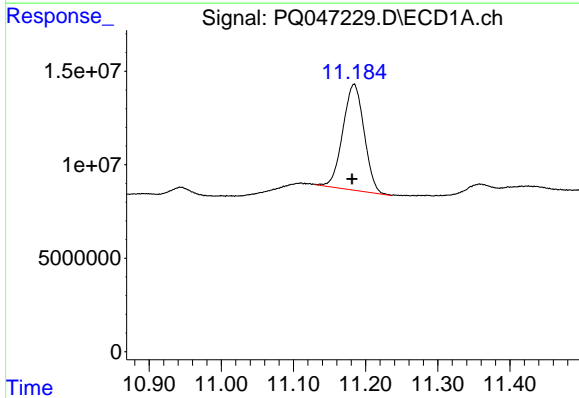
#1 Tetrachloro-m-xylene  
 R.T.: 5.107 min  
 Delta R.T.: -0.001 min  
 Response: 310763847  
 Conc: 17.19 ng/ml

Instrument :  
 ECD\_Q  
 ClientSampled :  
 S11-03-A

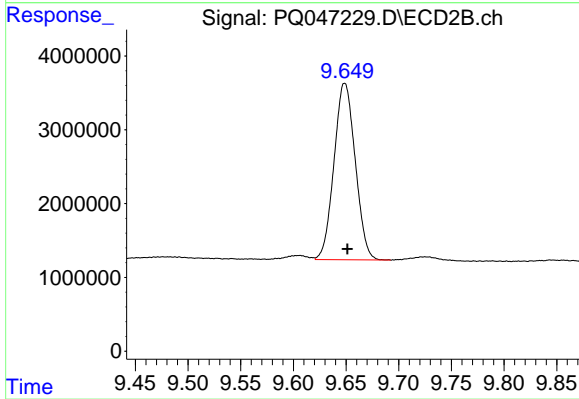
Manual Integrations  
 APPROVED  
 Sohil  
 4/3/2020 3:23:45 PM



#1 Tetrachloro-m-xylene  
 R.T.: 4.263 min  
 Delta R.T.: -0.002 min  
 Response: 47129193  
 Conc: 19.59 ng/ml



#2 Decachlorobiphenyl  
 R.T.: 11.184 min  
 Delta R.T.: 0.003 min  
 Response: 116302025  
 Conc: 13.72 ng/ml m



#2 Decachlorobiphenyl  
 R.T.: 9.649 min  
 Delta R.T.: -0.002 min  
 Response: 33552404  
 Conc: 14.34 ng/ml