

Data Path : Z:\pestpcbsrv\HPCHEM1\ECD_Q\Data\PQ040220\
 Data File : PQ047237.D
 Signal(s) : Signal #1: ECD1A.ch Signal #2: ECD2B.ch
 Acq On : 02 Apr 2020 14:02
 Operator : AJ\MA
 Sample : L2085-10
 Misc :
 ALS Vial : 14 Sample Multiplier: 1

Instrument :
 ECD_Q
 ClientSampled :
 S12-10-A

Integration File signal 1: autoint1.e
 Integration File signal 2: autoint2.e
 Quant Time: Apr 03 05:44:21 2020
 Quant Method : Z:\pestpcbsrv\HPCHEM1\ECD_Q\Method\PQ033020.M
 Quant Title : GC EXTRACTABLES
 QLast Update : Mon Mar 30 14:41:30 2020
 Response via : Initial Calibration
 Integrator: ChemStation

Volume Inj. : 2 µl
 Signal #1 Phase : ZB-MR1 Signal #2 Phase: ZB-MR2
 Signal #1 Info : 30Mx0.32mmx 0.50µ Signal #2 Info : 30M x 0.32mm x 0.25µm

Compound	RT#1	RT#2	Resp#1	Resp#2	ng/ml	ng/ml

System Monitoring Compounds						
1) SA Tetrachlo...	5.107	4.263	224.8E6	42613544	12.435	17.709 #
2) SA Decachlor...	11.182	9.649	54349014	23189988	6.412	9.912 #

Target Compounds

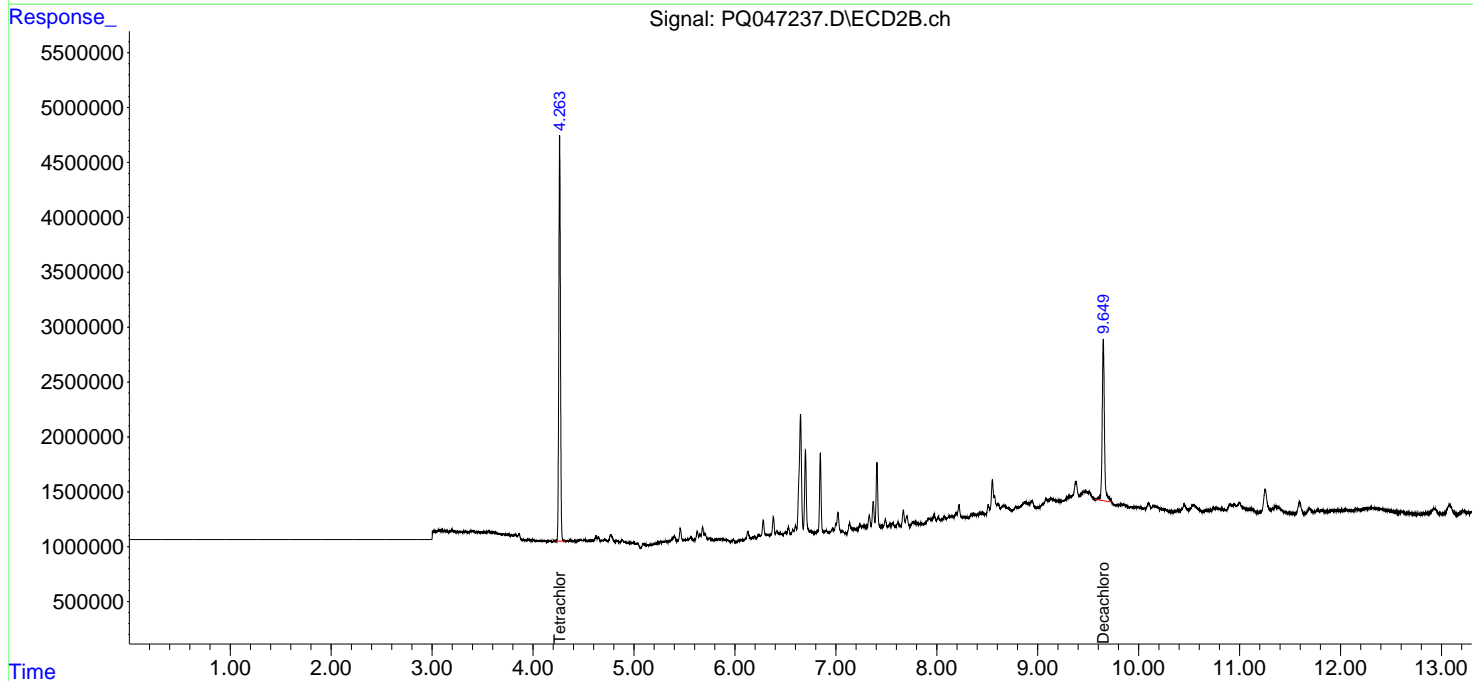
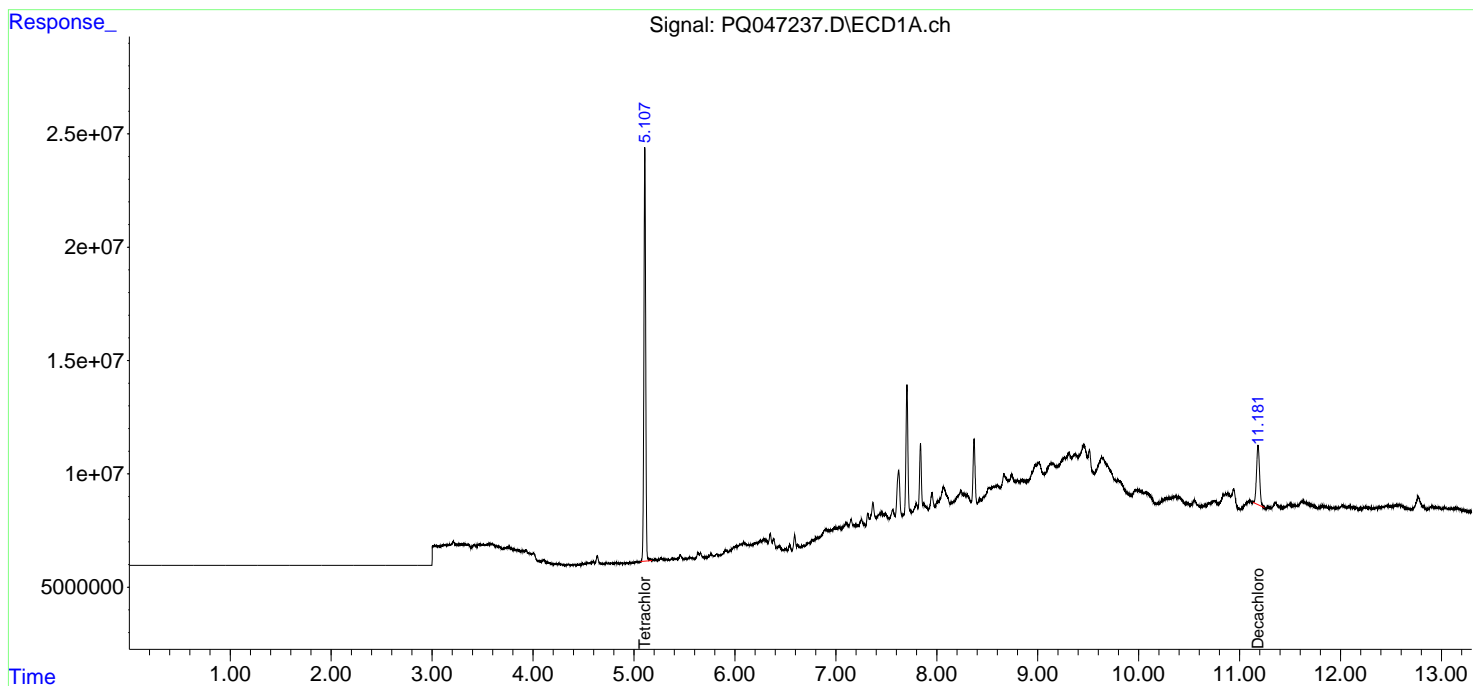
(f)=RT Delta > 1/2 Window (#)=Amounts differ by > 25% (m)=manual int.

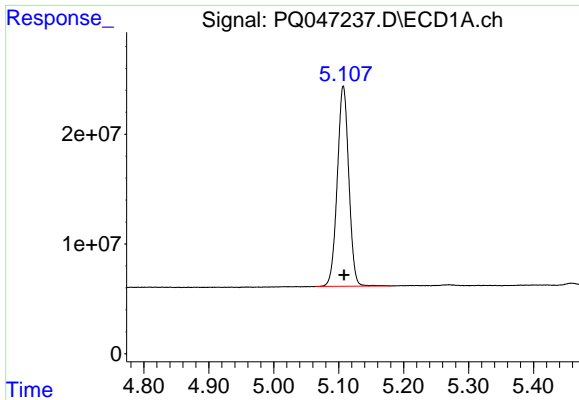
Data Path : Z:\pestpcbsrv\HPCHEM1\ECD_Q\Data\PQ040220\
 Data File : PQ047237.D
 Signal(s) : Signal #1: ECD1A.ch Signal #2: ECD2B.ch
 Acq On : 02 Apr 2020 14:02
 Operator : AJ\MA
 Sample : L2085-10
 Misc :
 ALS Vial : 14 Sample Multiplier: 1

Instrument :
 ECD_Q
 ClientSampleId :
 S12-10-A

Integration File signal 1: autoint1.e
 Integration File signal 2: autoint2.e
 Quant Time: Apr 03 05:44:21 2020
 Quant Method : Z:\pestpcbsrv\HPCHEM1\ECD_Q\Method\PQ033020.M
 Quant Title : GC EXTRACTABLES
 QLast Update : Mon Mar 30 14:41:30 2020
 Response via : Initial Calibration
 Integrator: ChemStation

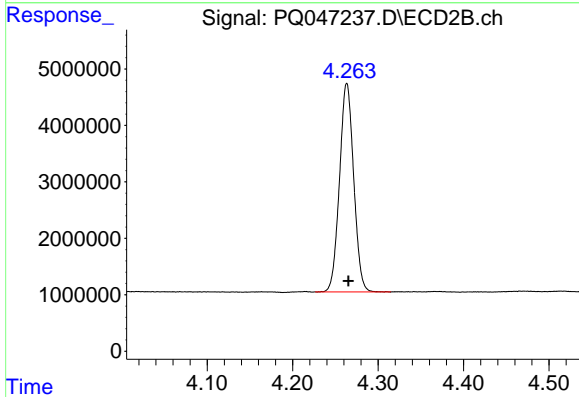
Volume Inj. : 2 µl
 Signal #1 Phase : ZB-MR1 Signal #2 Phase: ZB-MR2
 Signal #1 Info : 30Mx0.32mmx 0.50µm Signal #2 Info : 30M x 0.32mm x 0.25µm



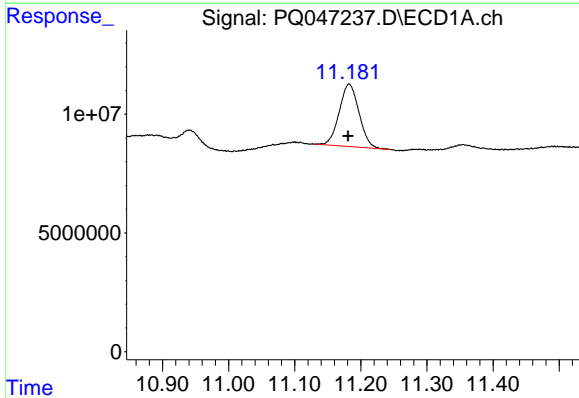


#1 Tetrachloro-m-xylene
 R.T.: 5.107 min
 Delta R.T.: 0.000 min
 Response: 224823046
 Conc: 12.44 ng/ml

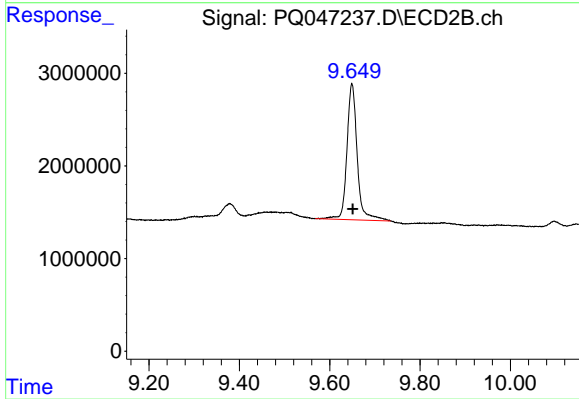
Instrument :
 ECD_Q
 ClientSampleId :
 S12-10-A



#1 Tetrachloro-m-xylene
 R.T.: 4.263 min
 Delta R.T.: -0.002 min
 Response: 42613544
 Conc: 17.71 ng/ml



#2 Decachlorobiphenyl
 R.T.: 11.182 min
 Delta R.T.: 0.001 min
 Response: 54349014
 Conc: 6.41 ng/ml



#2 Decachlorobiphenyl
 R.T.: 9.649 min
 Delta R.T.: -0.002 min
 Response: 23189988
 Conc: 9.91 ng/ml