

Data Path : Z:\pestpcbsrv\HPCHEM1\ECD_Q\Data\PQ040220\
 Data File : PQ047244.D
 Signal(s) : Signal #1: ECD1A.ch Signal #2: ECD2B.ch
 Acq On : 02 Apr 2020 15:57
 Operator : AJ\MA
 Sample : L2096-01MSD
 Misc :
 ALS Vial : 21 Sample Multiplier: 1

Instrument :
 ECD_Q
 ClientSampleId :
 RO-1-2-TPMSD

Integration File signal 1: autoint1.e
 Integration File signal 2: autoint2.e
 Quant Time: Apr 03 05:48:43 2020
 Quant Method : Z:\pestpcbsrv\HPCHEM1\ECD_Q\Method\PQ033020.M
 Quant Title : GC EXTRACTABLES
 QLast Update : Mon Mar 30 14:41:30 2020
 Response via : Initial Calibration
 Integrator: ChemStation

Volume Inj. : 2 µl
 Signal #1 Phase : ZB-MR1 Signal #2 Phase: ZB-MR2
 Signal #1 Info : 30Mx0.32mmx 0.50µ Signal #2 Info : 30M x 0.32mm x 0.25µm

Compound	RT#1	RT#2	Resp#1	Resp#2	ng/ml	ng/ml

System Monitoring Compounds						
1) SA Tetrachlo...	5.106	4.262	403.7E6	56888290	22.326	23.641
2) SA Decachlor...	11.183	9.648	184.1E6	52065597	21.722	22.254
Target Compounds						
3) L1 AR-1016-1	6.421	5.536	130.0E6	19357398	193.908	206.728
4) L1 AR-1016-2	6.445	5.556	184.8E6	25600963	195.282	204.032
5) L1 AR-1016-3	6.512	5.752	110.6E6	13184317	195.327	197.141
6) L1 AR-1016-4	6.618	5.800	92557243	10227039	194.966	189.869
7) L1 AR-1016-5	6.933	6.034	85463023	13718136	194.781	196.923
31) L7 AR-1260-1	8.110	7.135	130.0E6	27148237	205.017	213.315
32) L7 AR-1260-2	8.374	7.330	164.7E6	32590384	202.924	207.227
33) L7 AR-1260-3	8.741	7.490	108.3E6	30117887	171.792	207.788
34) L7 AR-1260-4	8.975	7.974	107.3E6	22416349	184.644	185.192
35) L7 AR-1260-5	9.309	8.220	215.9E6	54424367	173.911	182.568

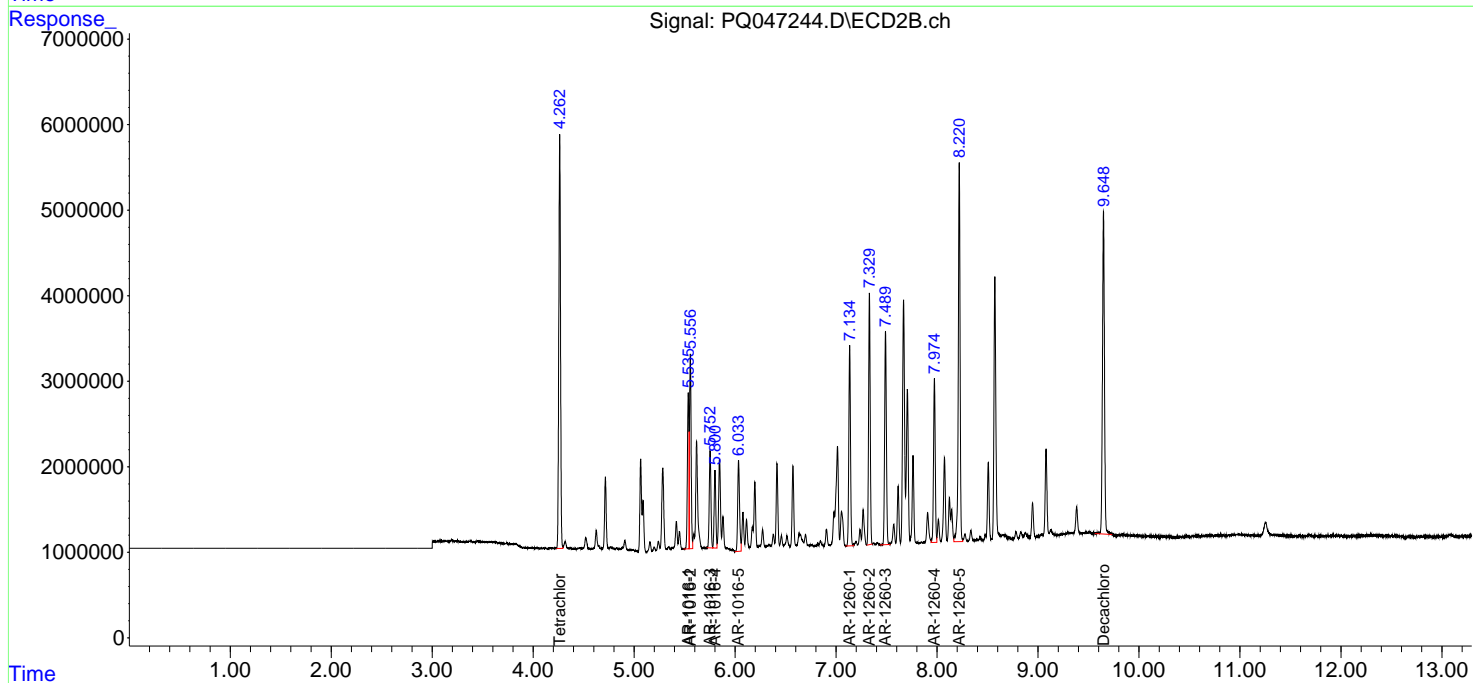
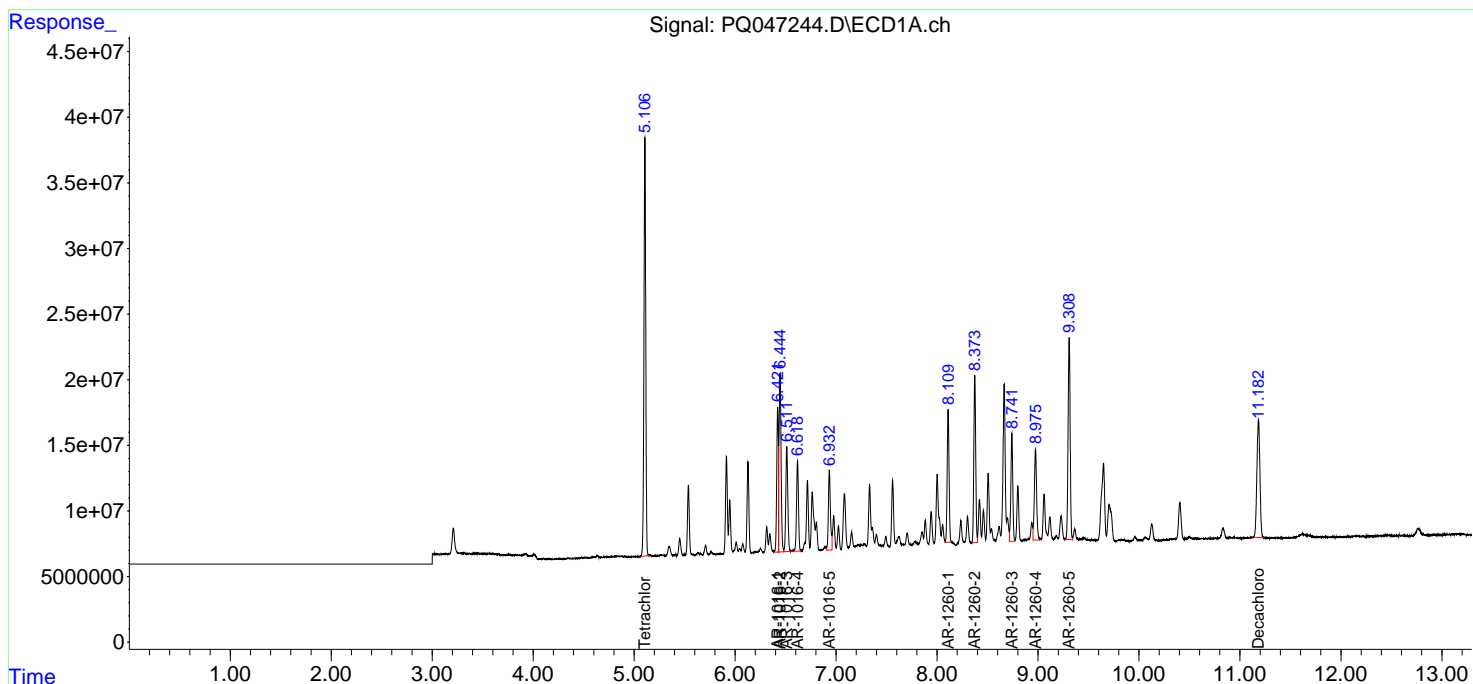
(f)=RT Delta > 1/2 Window (#)=Amounts differ by > 25% (m)=manual int.

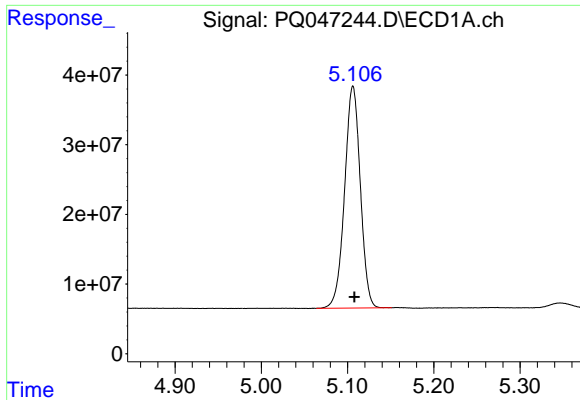
Data Path : Z:\pestpcbsrv\HPCHEM1\ECD_Q\Data\PQ040220\
 Data File : PQ047244.D
 Signal(s) : Signal #1: ECD1A.ch Signal #2: ECD2B.ch
 Acq On : 02 Apr 2020 15:57
 Operator : AJ\MA
 Sample : L2096-01MSD
 Misc :
 ALS Vial : 21 Sample Multiplier: 1

Instrument :
 ECD_Q
 ClientSampled :
 RO-1-2-TPMSD

Integration File signal 1: autoint1.e
 Integration File signal 2: autoint2.e
 Quant Time: Apr 03 05:48:43 2020
 Quant Method : Z:\pestpcbsrv\HPCHEM1\ECD_Q\Method\PQ033020.M
 Quant Title : GC EXTRACTABLES
 QLast Update : Mon Mar 30 14:41:30 2020
 Response via : Initial Calibration
 Integrator: ChemStation

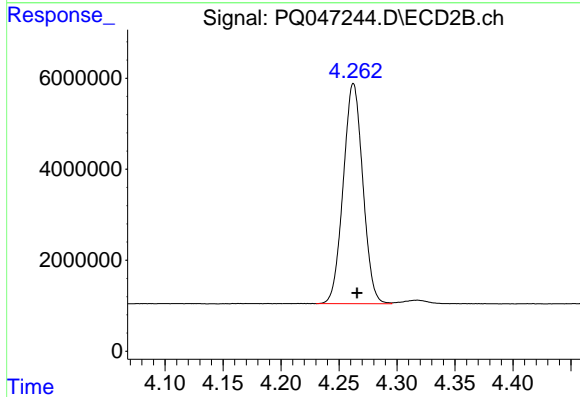
Volume Inj. : 2 µl
 Signal #1 Phase : ZB-MR1 Signal #2 Phase: ZB-MR2
 Signal #1 Info : 30Mx0.32mmx 0.50µ Signal #2 Info : 30M x 0.32mm x 0.25µm



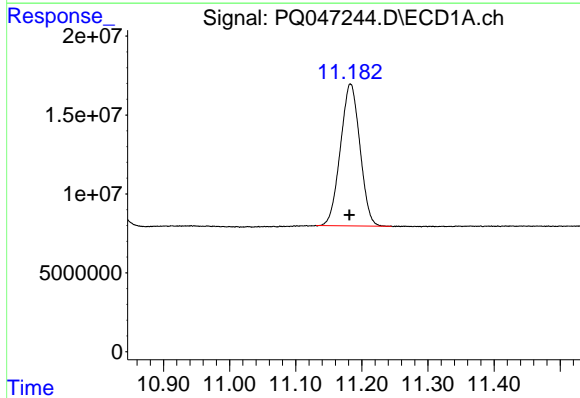


#1 Tetrachloro-m-xylene
 R.T.: 5.106 min
 Delta R.T.: -0.002 min
 Response: 403655001
 Conc: 22.33 ng/ml

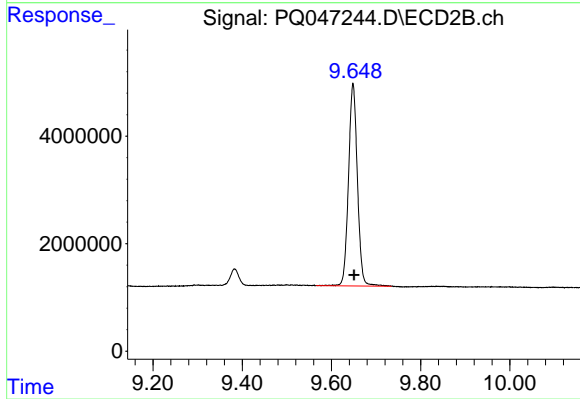
Instrument :
 ECD_Q
 ClientSampleId :
 RO-1-2-TPMSD



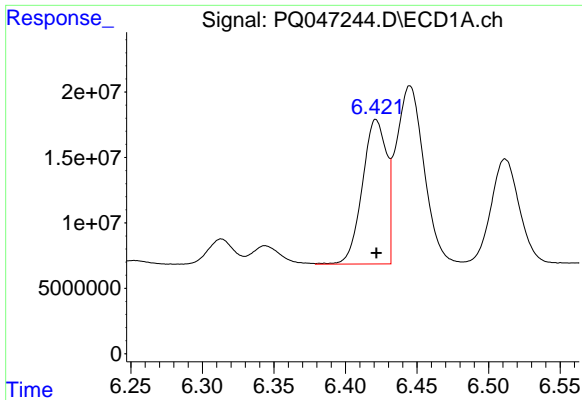
#1 Tetrachloro-m-xylene
 R.T.: 4.262 min
 Delta R.T.: -0.003 min
 Response: 56888290
 Conc: 23.64 ng/ml



#2 Decachlorobiphenyl
 R.T.: 11.183 min
 Delta R.T.: 0.002 min
 Response: 184131163
 Conc: 21.72 ng/ml



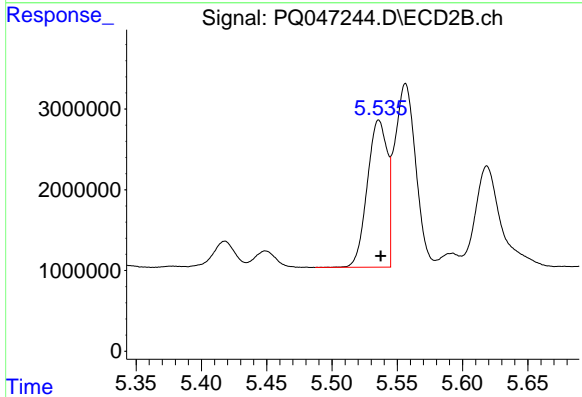
#2 Decachlorobiphenyl
 R.T.: 9.648 min
 Delta R.T.: -0.003 min
 Response: 52065597
 Conc: 22.25 ng/ml



#3 AR-1016-1

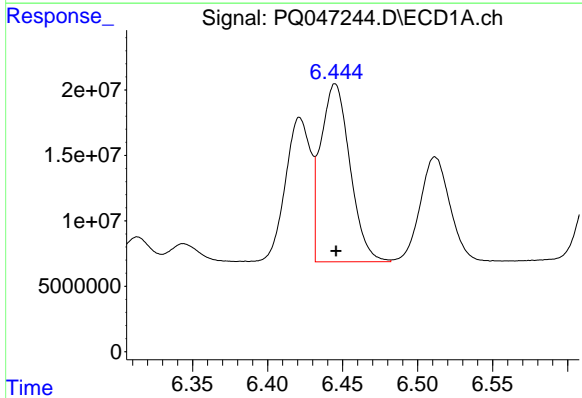
R.T.: 6.421 min
 Delta R.T.: 0.000 min
 Response: 12954222
 Conc: 193.91 ng/ml

Instrument :
 ECD_Q
 ClientSampled :
 RO-1-2-TPMSD



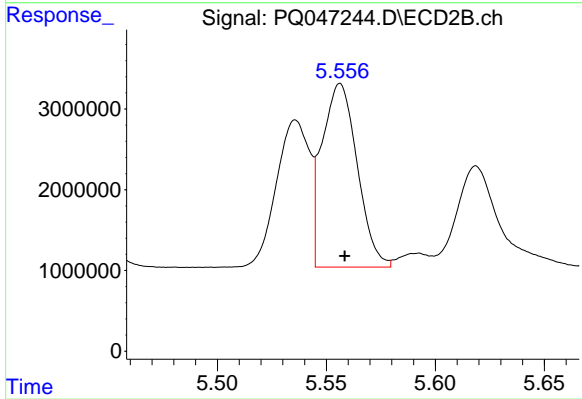
#3 AR-1016-1

R.T.: 5.536 min
 Delta R.T.: -0.002 min
 Response: 19357398
 Conc: 206.73 ng/ml



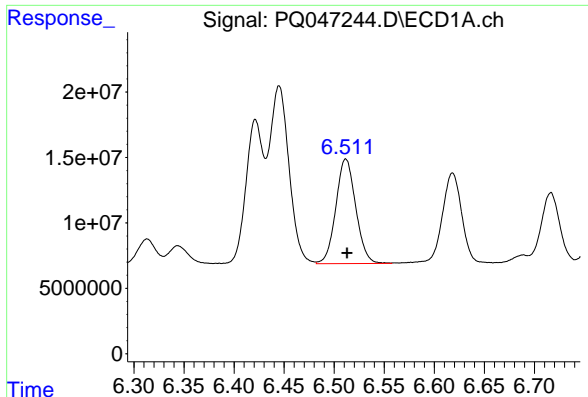
#4 AR-1016-2

R.T.: 6.445 min
 Delta R.T.: 0.000 min
 Response: 184811696
 Conc: 195.28 ng/ml



#4 AR-1016-2

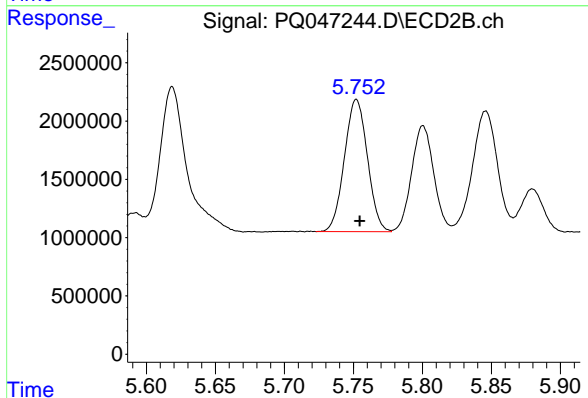
R.T.: 5.556 min
 Delta R.T.: -0.002 min
 Response: 25600963
 Conc: 204.03 ng/ml



#5 AR-1016-3

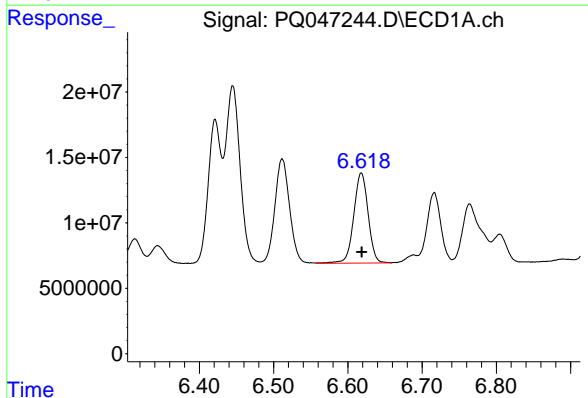
R.T.: 6.512 min
 Delta R.T.: -0.001 min
 Response: 110605007
 Conc: 195.33 ng/ml

Instrument :
 ECD_Q
 ClientSampleId :
 RO-1-2-TPMSD



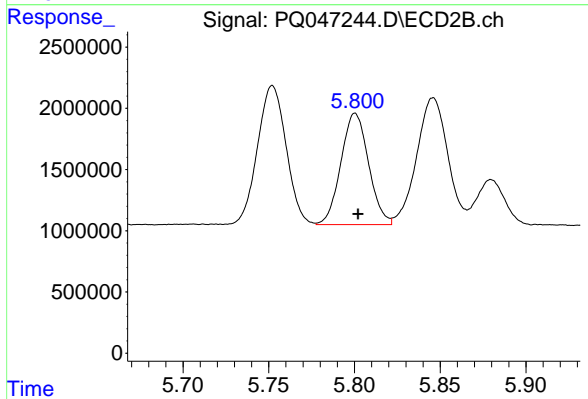
#5 AR-1016-3

R.T.: 5.752 min
 Delta R.T.: -0.002 min
 Response: 13184317
 Conc: 197.14 ng/ml



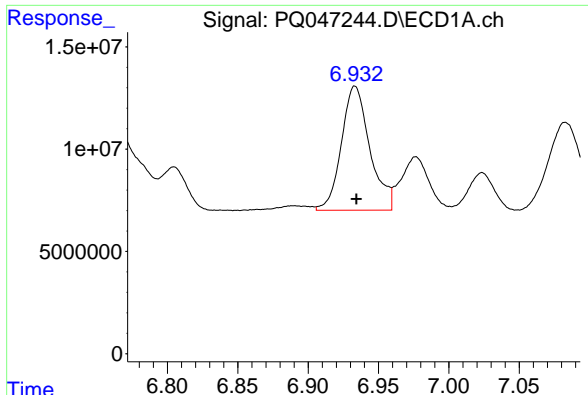
#6 AR-1016-4

R.T.: 6.618 min
 Delta R.T.: 0.000 min
 Response: 92557243
 Conc: 194.97 ng/ml



#6 AR-1016-4

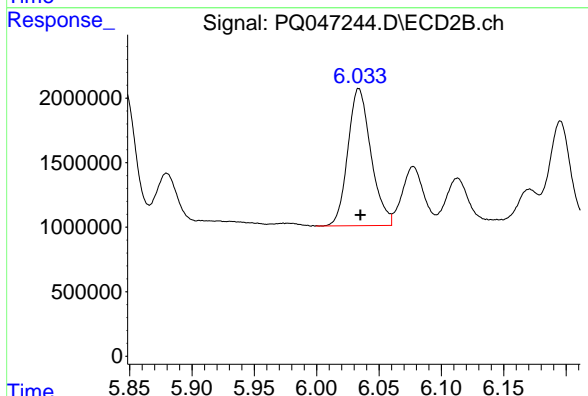
R.T.: 5.800 min
 Delta R.T.: -0.002 min
 Response: 10227039
 Conc: 189.87 ng/ml



#7 AR-1016-5

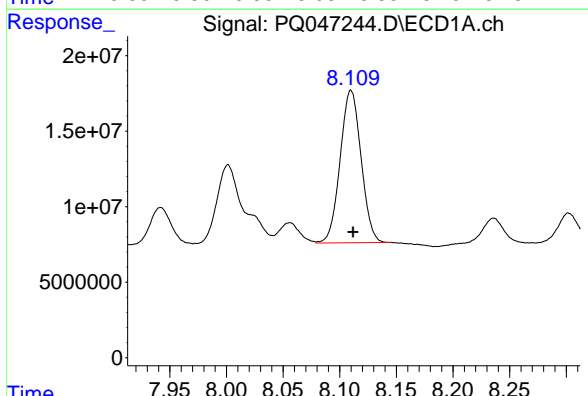
R.T.: 6.933 min
 Delta R.T.: -0.001 min
 Response: 85463023
 Conc: 194.78 ng/ml

Instrument :
 ECD_Q
 ClientSampleId :
 RO-1-2-TPMSD



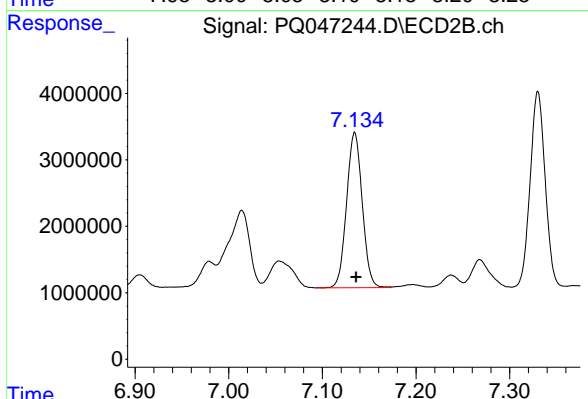
#7 AR-1016-5

R.T.: 6.034 min
 Delta R.T.: -0.001 min
 Response: 13718136
 Conc: 196.92 ng/ml



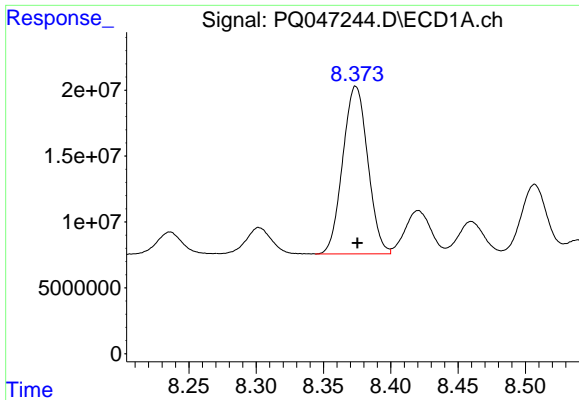
#31 AR-1260-1

R.T.: 8.110 min
 Delta R.T.: -0.002 min
 Response: 129975375
 Conc: 205.02 ng/ml



#31 AR-1260-1

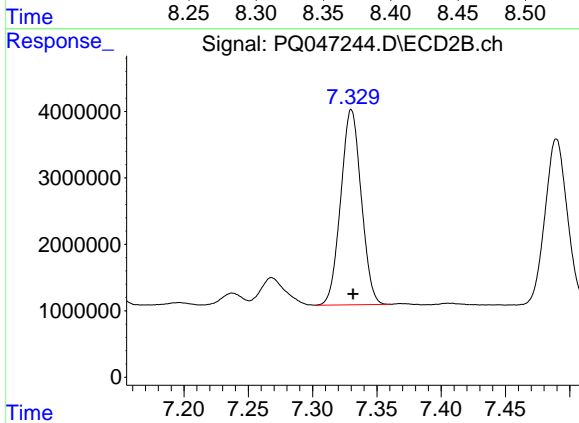
R.T.: 7.135 min
 Delta R.T.: -0.001 min
 Response: 27148237
 Conc: 213.32 ng/ml



#32 AR-1260-2

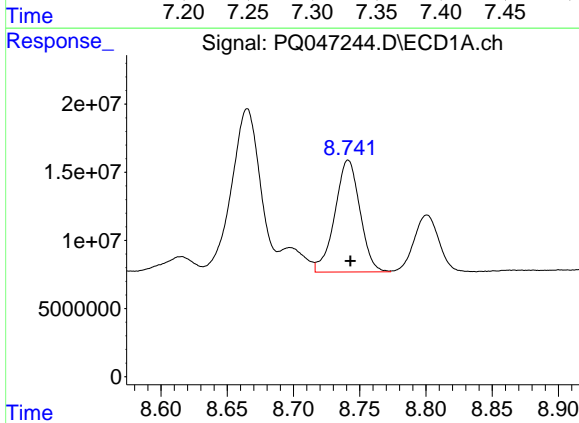
R.T.: 8.374 min
 Delta R.T.: -0.001 min
 Response: 164702312
 Conc: 202.92 ng/ml

Instrument :
 ECD_Q
 ClientSampleId :
 RO-1-2-TPMSD



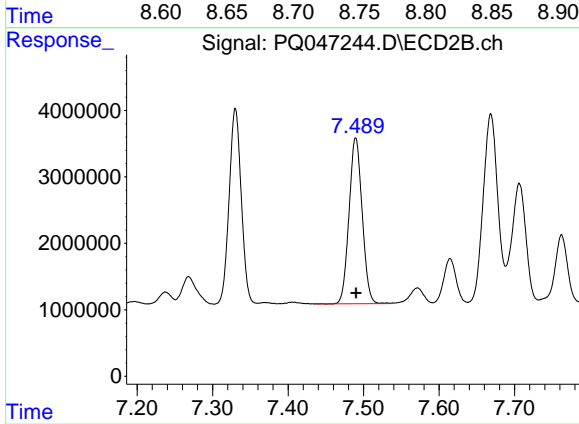
#32 AR-1260-2

R.T.: 7.330 min
 Delta R.T.: -0.001 min
 Response: 32590384
 Conc: 207.23 ng/ml



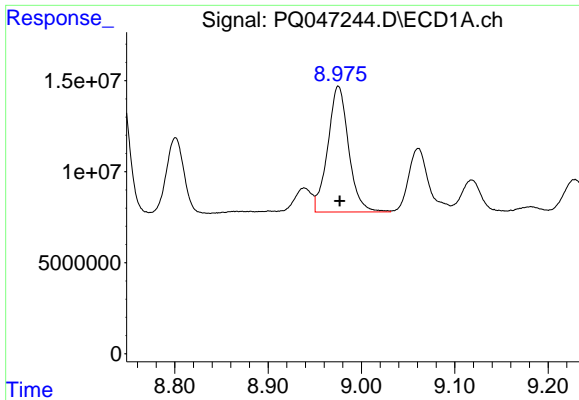
#33 AR-1260-3

R.T.: 8.741 min
 Delta R.T.: -0.002 min
 Response: 108290470
 Conc: 171.79 ng/ml



#33 AR-1260-3

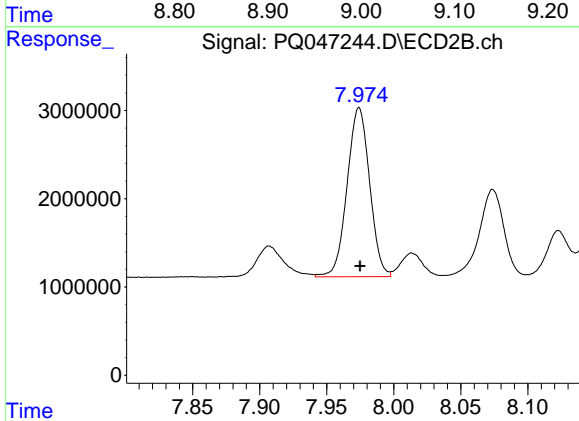
R.T.: 7.490 min
 Delta R.T.: 0.000 min
 Response: 30117887
 Conc: 207.79 ng/ml



#34 AR-1260-4

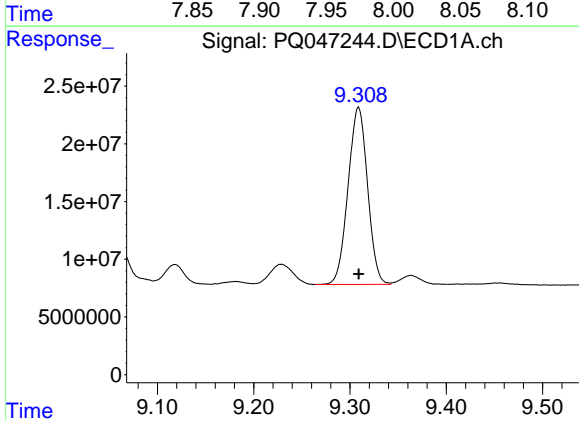
R.T.: 8.975 min
Delta R.T.: -0.001 min
Response: 107252003
Conc: 184.64 ng/ml

Instrument :
ECD_Q
ClientSampleId :
RO-1-2-TPMSD



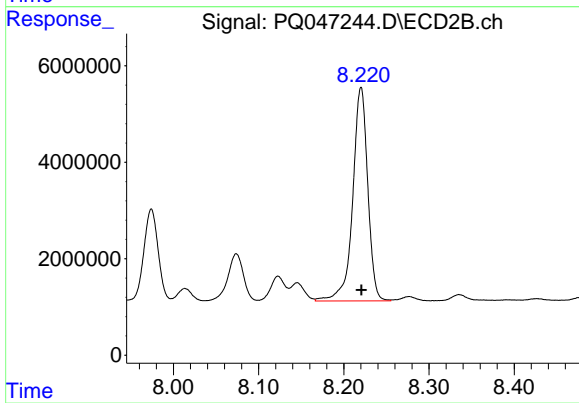
#34 AR-1260-4

R.T.: 7.974 min
Delta R.T.: 0.000 min
Response: 22416349
Conc: 185.19 ng/ml



#35 AR-1260-5

R.T.: 9.309 min
Delta R.T.: 0.000 min
Response: 215914391
Conc: 173.91 ng/ml



#35 AR-1260-5

R.T.: 8.220 min
Delta R.T.: 0.000 min
Response: 54424367
Conc: 182.57 ng/ml