

Data Path : Z:\pestpcbsrv\HPCHEM1\ECD_Q\Data\PQ040220\
 Data File : PQ047252.D
 Signal(s) : Signal #1: ECD1A.ch Signal #2: ECD2B.ch
 Acq On : 02 Apr 2020 18:51
 Operator : AJ\MA
 Sample : L2094-01
 Misc :
 ALS Vial : 27 Sample Multiplier: 1

Instrument :
 ECD_Q
 ClientSampleId :
 65-66-67

Integration File signal 1: autoint1.e
 Integration File signal 2: autoint2.e
 Quant Time: Apr 03 05:54:56 2020
 Quant Method : Z:\pestpcbsrv\HPCHEM1\ECD_Q\Method\PQ033020.M
 Quant Title : GC EXTRACTABLES
 QLast Update : Mon Mar 30 14:41:30 2020
 Response via : Initial Calibration
 Integrator: ChemStation

Volume Inj. : 2 µl
 Signal #1 Phase : ZB-MR1 Signal #2 Phase: ZB-MR2
 Signal #1 Info : 30Mx0.32mmx 0.50µ Signal #2 Info : 30M x 0.32mm x 0.25µm

Compound	RT#1	RT#2	Resp#1	Resp#2	ng/ml	ng/ml

System Monitoring Compounds						
1) SA Tetrachlo...	5.106	4.263	340.2E6	49778819	18.814	20.687
2) SA Decachlor...	11.182	9.648	133.8E6	39241430	15.783	16.773

Target Compounds

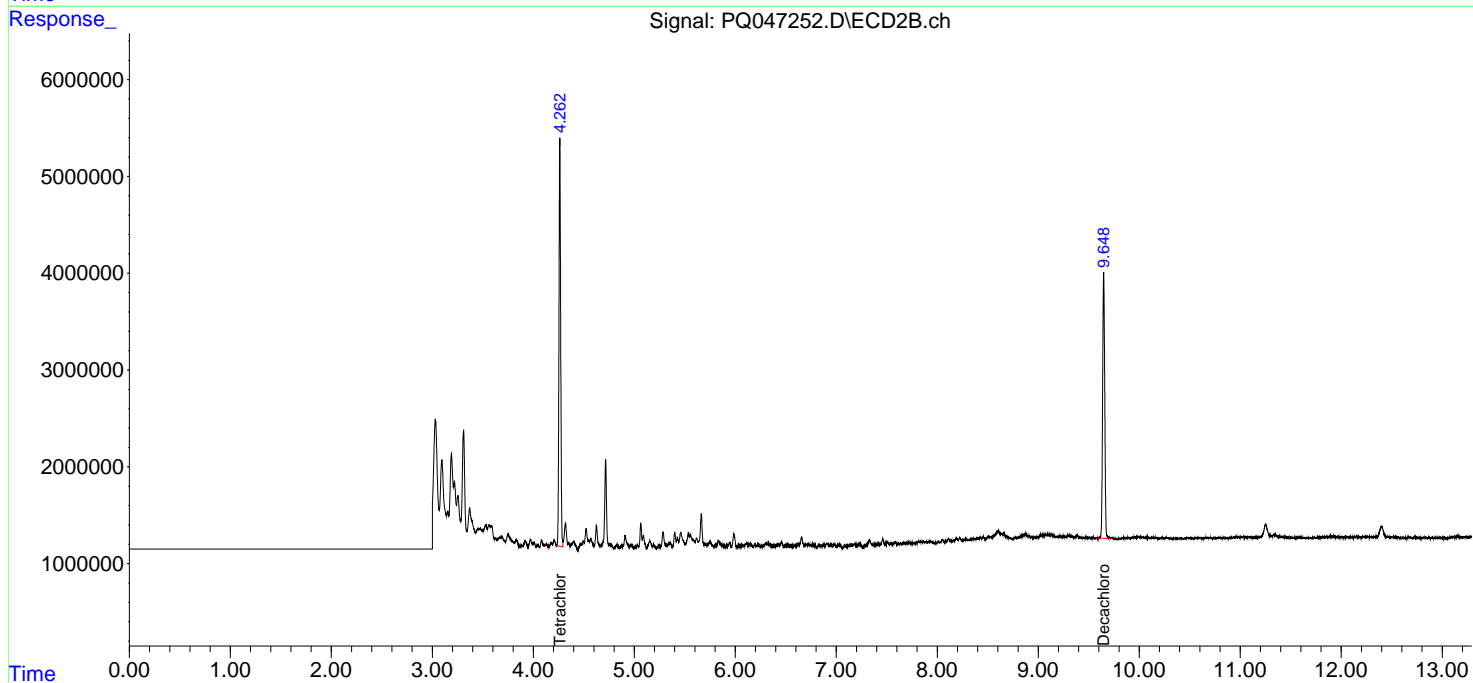
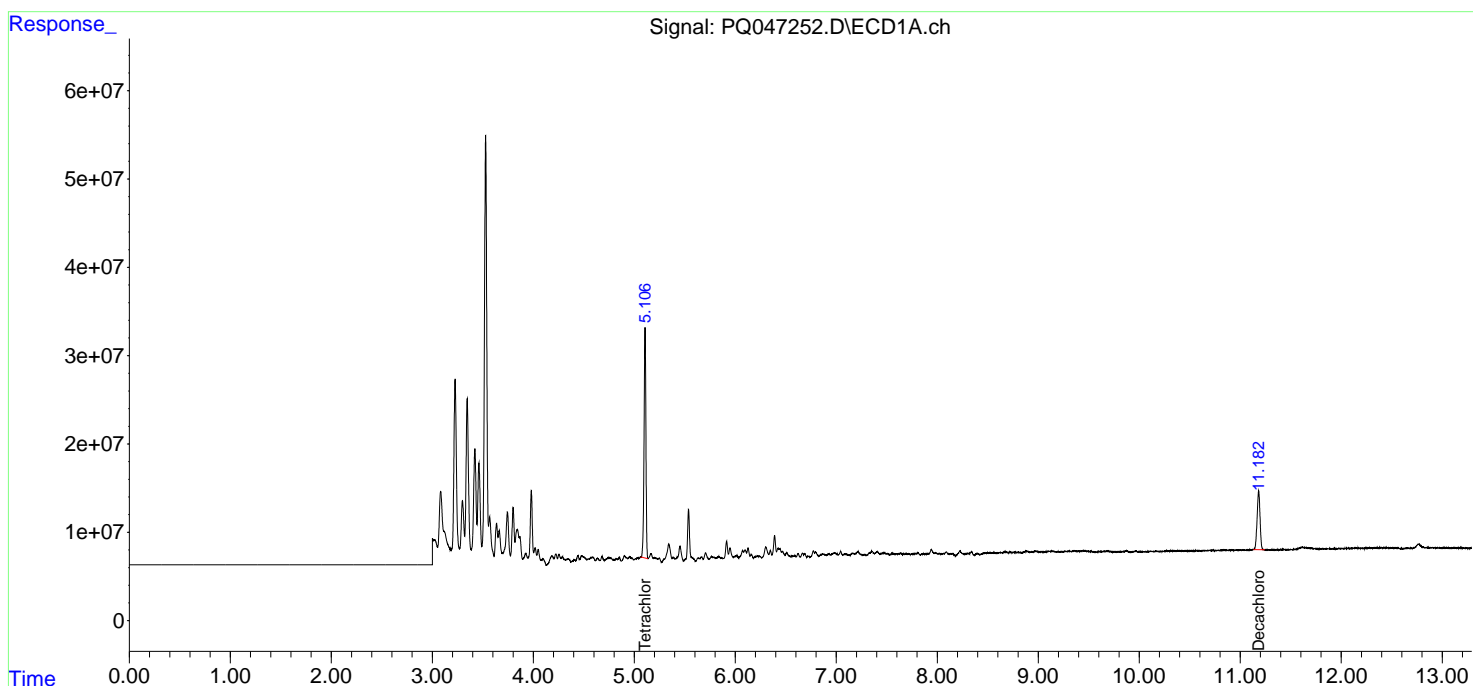
(f)=RT Delta > 1/2 Window (#)=Amounts differ by > 25% (m)=manual int.

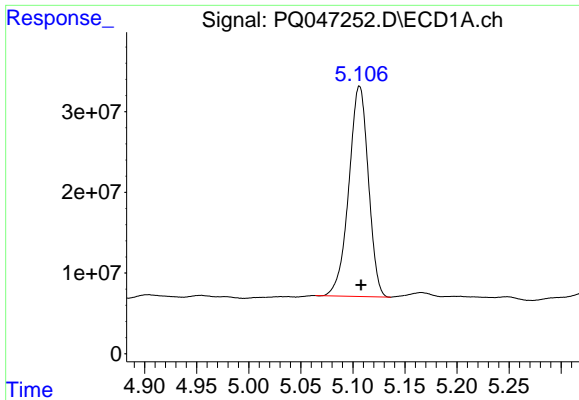
Data Path : Z:\pestpcbsrv\HPCHEM1\ECD_Q\Data\PQ040220\
 Data File : PQ047252.D
 Signal(s) : Signal #1: ECD1A.ch Signal #2: ECD2B.ch
 Acq On : 02 Apr 2020 18:51
 Operator : AJ\MA
 Sample : L2094-01
 Misc :
 ALS Vial : 27 Sample Multiplier: 1

Instrument :
 ECD_Q
 ClientSampleId :
 65-66-67

Integration File signal 1: autoint1.e
 Integration File signal 2: autoint2.e
 Quant Time: Apr 03 05:54:56 2020
 Quant Method : Z:\pestpcbsrv\HPCHEM1\ECD_Q\Method\PQ033020.M
 Quant Title : GC EXTRACTABLES
 QLast Update : Mon Mar 30 14:41:30 2020
 Response via : Initial Calibration
 Integrator: ChemStation

Volume Inj. : 2 µl
 Signal #1 Phase : ZB-MR1 Signal #2 Phase: ZB-MR2
 Signal #1 Info : 30Mx0.32mmx 0.50µ Signal #2 Info : 30M x 0.32mm x 0.25µm

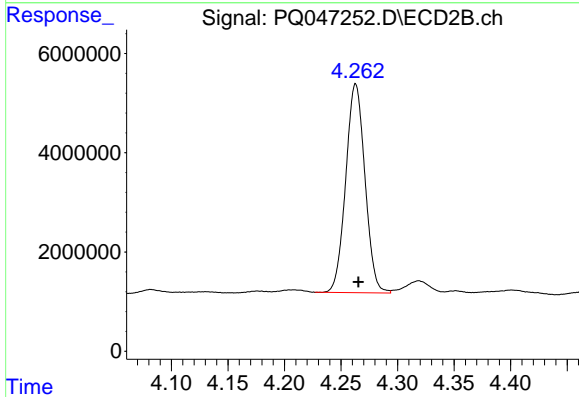




#1 Tetrachloro-m-xylene

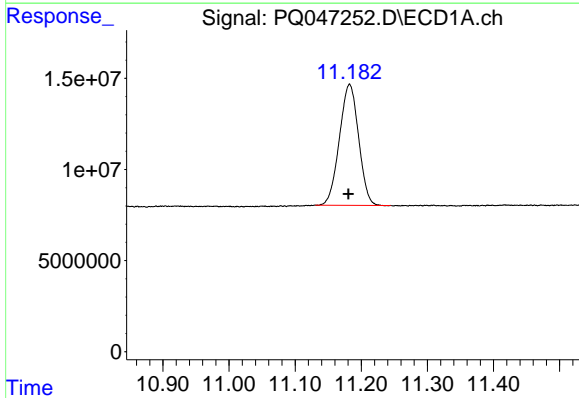
R.T.: 5.106 min
 Delta R.T.: -0.002 min
 Response: 340152880
 Conc: 18.81 ng/ml

Instrument :
 ECD_Q
 ClientSampled :
 65-66-67



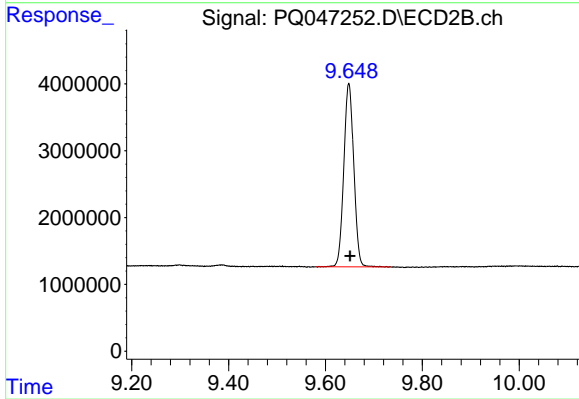
#1 Tetrachloro-m-xylene

R.T.: 4.263 min
 Delta R.T.: -0.002 min
 Response: 49778819
 Conc: 20.69 ng/ml



#2 Decachlorobiphenyl

R.T.: 11.182 min
 Delta R.T.: 0.001 min
 Response: 133786925
 Conc: 15.78 ng/ml



#2 Decachlorobiphenyl

R.T.: 9.648 min
 Delta R.T.: -0.003 min
 Response: 39241430
 Conc: 16.77 ng/ml