

Data Path : Z:\pestpcbsrv\HPCHEM1\ECD\_Q\Data\PQ040220\  
 Data File : PQ047257.D  
 Signal(s) : Signal #1: ECD1A.ch Signal #2: ECD2B.ch  
 Acq On : 02 Apr 2020 20:13  
 Operator : AJ\MA  
 Sample : L2129-41  
 Misc :  
 ALS Vial : 32 Sample Multiplier: 1

Instrument :  
 ECD\_Q  
 ClientSampleId :  
 TP-3

Integration File signal 1: autoint1.e  
 Integration File signal 2: autoint2.e  
 Quant Time: Apr 03 05:59:07 2020  
 Quant Method : Z:\pestpcbsrv\HPCHEM1\ECD\_Q\Method\PQ033020.M  
 Quant Title : GC EXTRACTABLES  
 QLast Update : Mon Mar 30 14:41:30 2020  
 Response via : Initial Calibration  
 Integrator: ChemStation

Volume Inj. : 2 µl  
 Signal #1 Phase : ZB-MR1 Signal #2 Phase: ZB-MR2  
 Signal #1 Info : 30Mx0.32mmx 0.50µ Signal #2 Info : 30M x 0.32mm x 0.25µm

Compound	RT#1	RT#2	Resp#1	Resp#2	ng/ml	ng/ml
-----						
System Monitoring Compounds						
1) SA Tetrachlo...	5.105	4.262	422.4E6	60482110	23.362	25.135
2) SA Decachlor...	11.180	9.648	194.2E6	56549078	22.912	24.170

Target Compounds

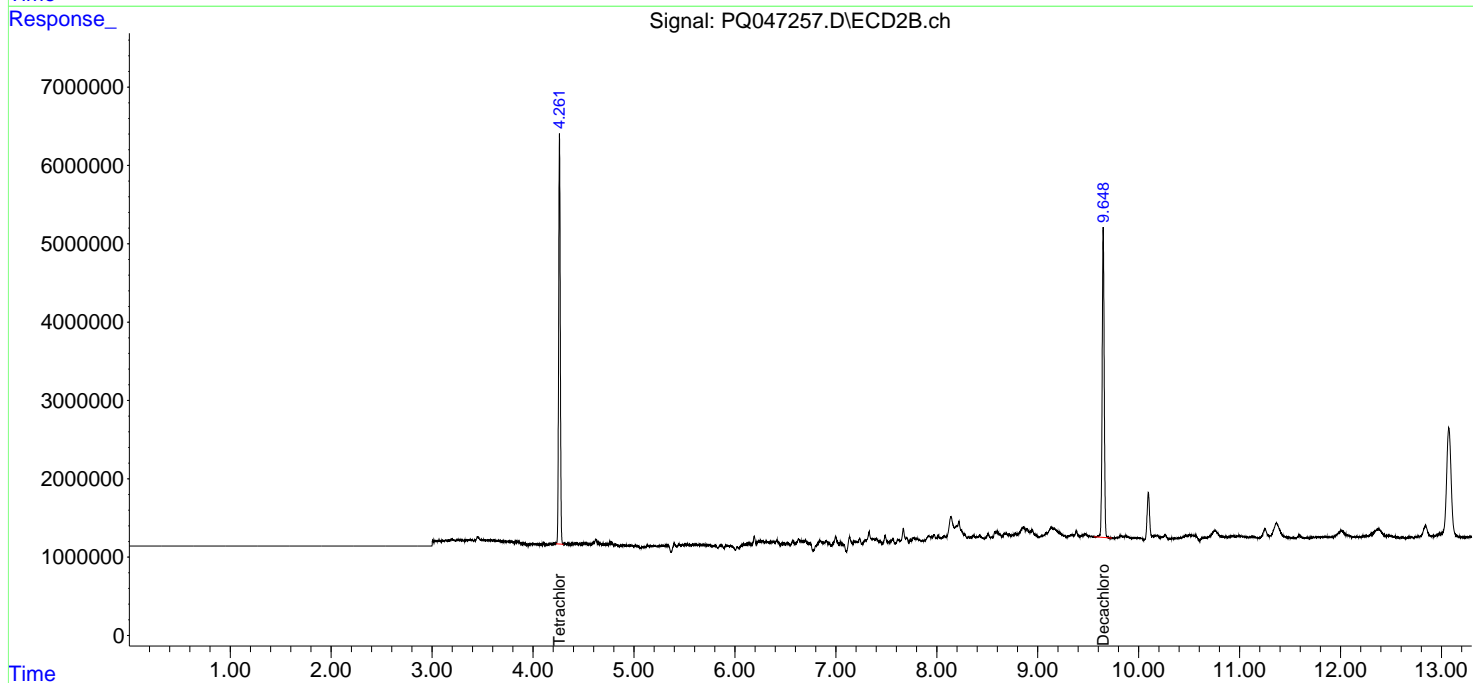
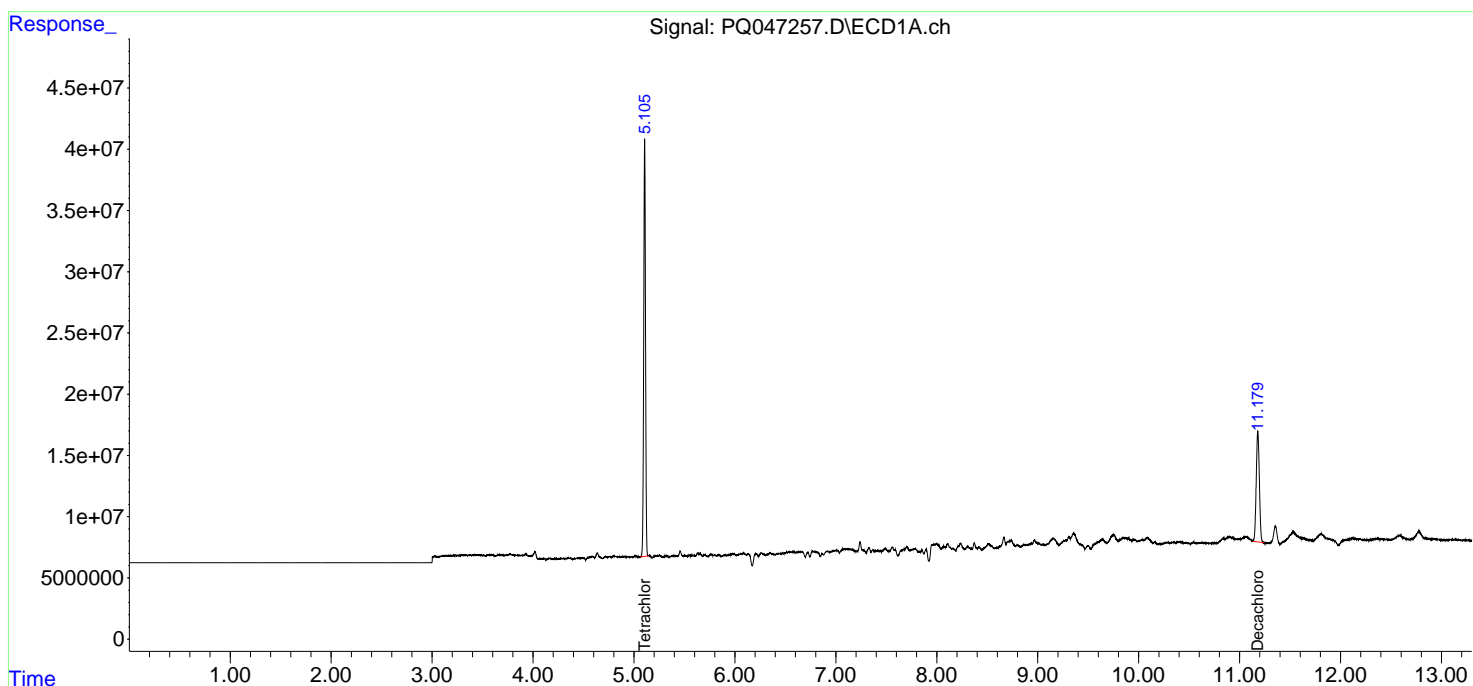
(f)=RT Delta > 1/2 Window (#)=Amounts differ by > 25% (m)=manual int.

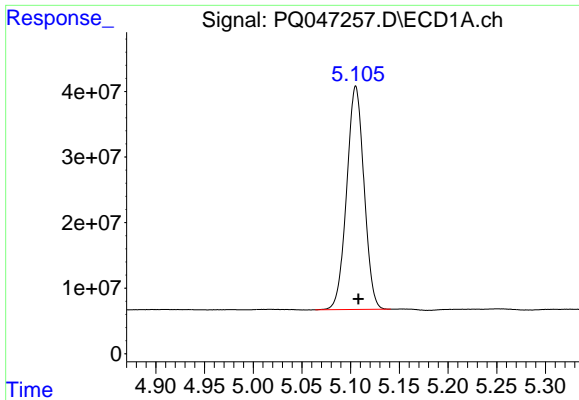
Data Path : Z:\pestpcbsrv\HPCHEM1\ECD\_Q\Data\PQ040220\  
 Data File : PQ047257.D  
 Signal(s) : Signal #1: ECD1A.ch Signal #2: ECD2B.ch  
 Acq On : 02 Apr 2020 20:13  
 Operator : AJ\MA  
 Sample : L2129-41  
 Misc :  
 ALS Vial : 32 Sample Multiplier: 1

Instrument :  
 ECD\_Q  
 ClientSampled :  
 TP-3

Integration File signal 1: autoint1.e  
 Integration File signal 2: autoint2.e  
 Quant Time: Apr 03 05:59:07 2020  
 Quant Method : Z:\pestpcbsrv\HPCHEM1\ECD\_Q\Method\PQ033020.M  
 Quant Title : GC EXTRACTABLES  
 QLast Update : Mon Mar 30 14:41:30 2020  
 Response via : Initial Calibration  
 Integrator: ChemStation

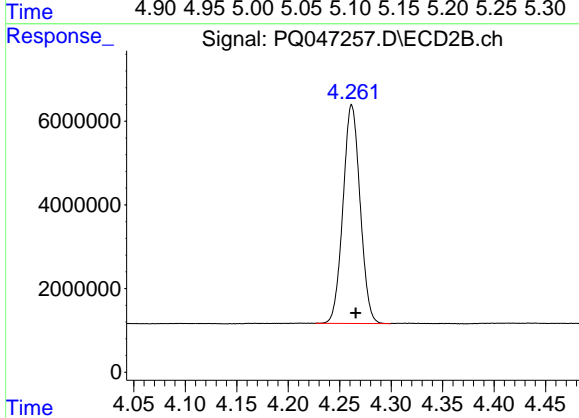
Volume Inj. : 2 µl  
 Signal #1 Phase : ZB-MR1 Signal #2 Phase: ZB-MR2  
 Signal #1 Info : 30Mx0.32mmx 0.50µ Signal #2 Info : 30M x 0.32mm x 0.25µm



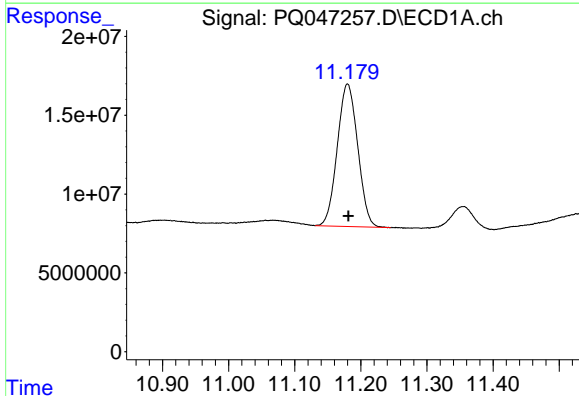


#1 Tetrachloro-m-xylene  
 R.T.: 5.105 min  
 Delta R.T.: -0.003 min  
 Response: 422388564  
 Conc: 23.36 ng/ml

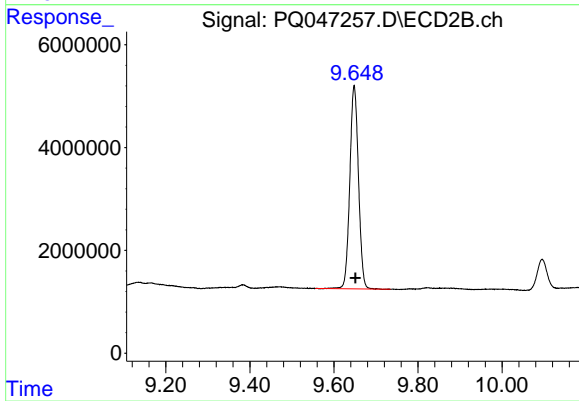
Instrument :  
 ECD\_Q  
 ClientSampled :  
 TP-3



#1 Tetrachloro-m-xylene  
 R.T.: 4.262 min  
 Delta R.T.: -0.004 min  
 Response: 60482110  
 Conc: 25.13 ng/ml



#2 Decachlorobiphenyl  
 R.T.: 11.180 min  
 Delta R.T.: 0.000 min  
 Response: 194217123  
 Conc: 22.91 ng/ml



#2 Decachlorobiphenyl  
 R.T.: 9.648 min  
 Delta R.T.: -0.003 min  
 Response: 56549078  
 Conc: 24.17 ng/ml