

Data Path : Z:\pestpcbsrv\HPCHEM1\ECD_Q\Data\PQ040320\
 Data File : PQ047263.D
 Signal(s) : Signal #1: ECD1A.ch Signal #2: ECD2B.ch
 Acq On : 03 Apr 2020 08:52
 Operator : AJ\MA
 Sample : I.BLK
 Misc :
 ALS Vial : 2 Sample Multiplier: 1

Instrument :
 ECD_Q
ClientSampled :
 I.BLK

Manual Integrations
APPROVED
 Sohil
 4/6/2020 10:51:26 AM

Integration File signal 1: autoint1.e
 Integration File signal 2: autoint2.e
 Quant Time: Apr 03 16:44:41 2020
 Quant Method : Z:\pestpcbsrv\HPCHEM1\ECD_Q\Method\PQ033020.M
 Quant Title : GC EXTRACTABLES
 QLast Update : Mon Mar 30 14:41:30 2020
 Response via : Initial Calibration
 Integrator: ChemStation

Volume Inj. : 2 µl
 Signal #1 Phase : ZB-MR1 Signal #2 Phase: ZB-MR2
 Signal #1 Info : 30Mx0.32mmx 0.50µ Signal #2 Info : 30M x 0.32mm x 0.25µm

Compound	RT#1	RT#2	Resp#1	Resp#2	ng/ml	ng/ml

System Monitoring Compounds						
1) SA Tetrachlo...	5.104	4.262	446.7E6	62292102	24.704	25.887
2) SA Decachlor...	11.174	9.647	202.8E6	58372926	23.929m	24.950

Target Compounds

(f)=RT Delta > 1/2 Window (#)=Amounts differ by > 25% (m)=manual int.

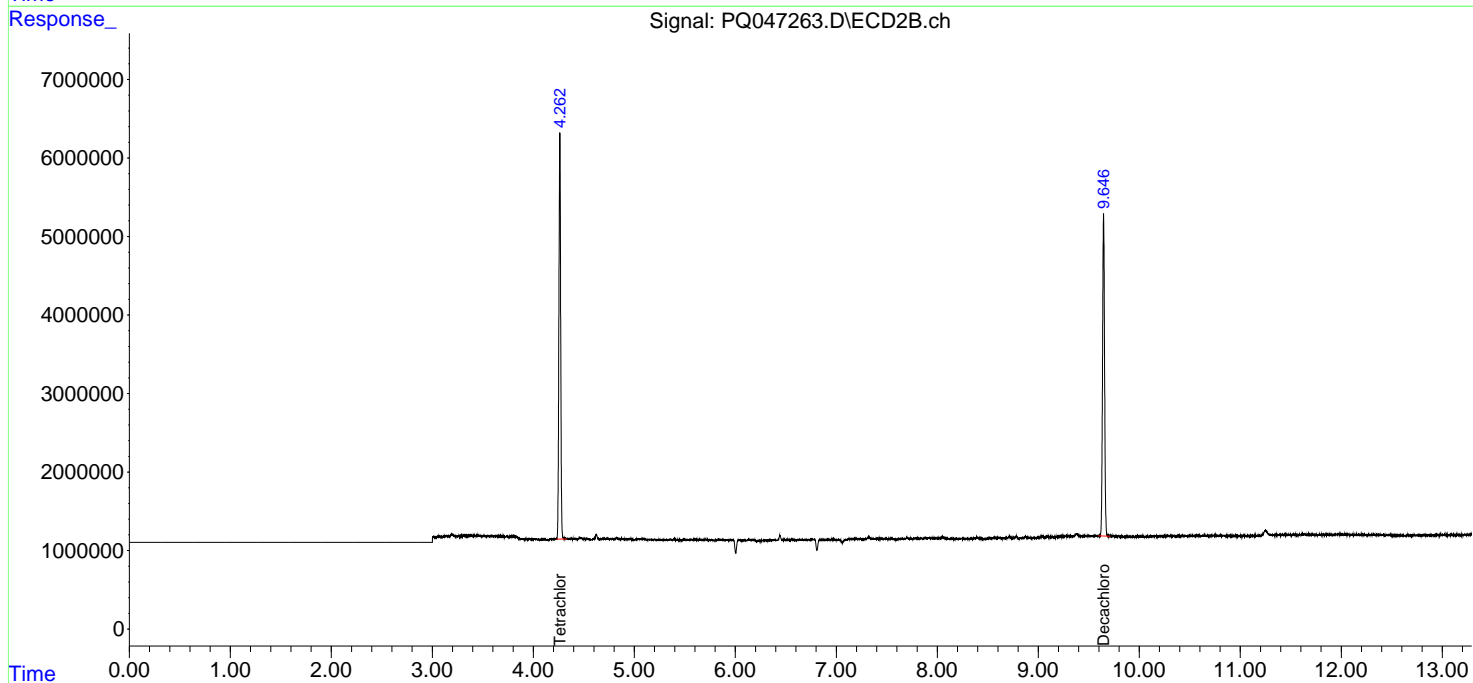
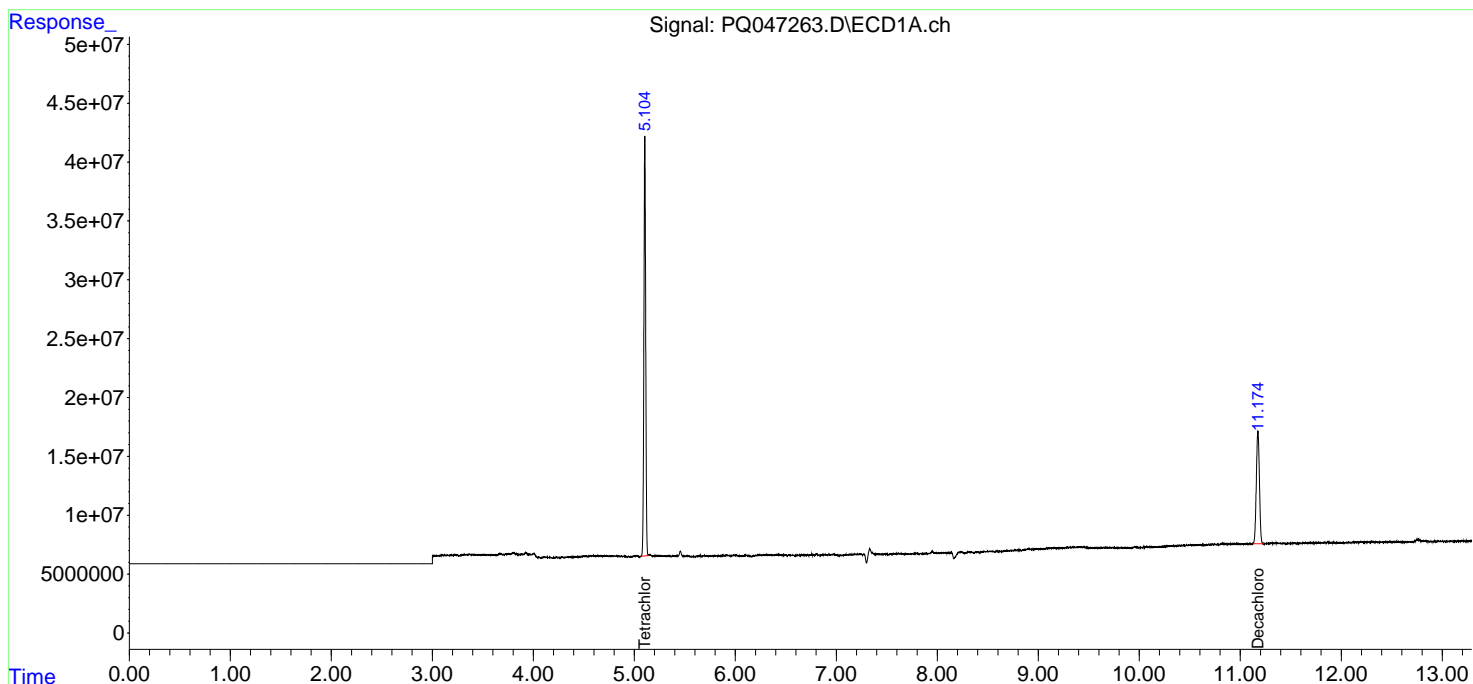
Data Path : Z:\pestpcbsrv\HPCHEM1\ECD_Q\Data\PQ040320\
 Data File : PQ047263.D
 Signal(s) : Signal #1: ECD1A.ch Signal #2: ECD2B.ch
 Acq On : 03 Apr 2020 08:52
 Operator : AJ\MA
 Sample : I.BLK
 Misc :
 ALS Vial : 2 Sample Multiplier: 1

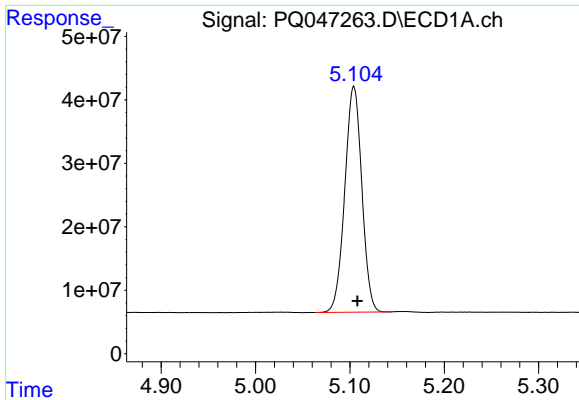
Instrument :
 ECD_Q
ClientSampled :
 I.BLK

Manual Integrations
APPROVED
 Sohil
 4/6/2020 10:51:26 AM

Integration File signal 1: autoint1.e
 Integration File signal 2: autoint2.e
 Quant Time: Apr 03 16:44:41 2020
 Quant Method : Z:\pestpcbsrv\HPCHEM1\ECD_Q\Method\PQ033020.M
 Quant Title : GC EXTRACTABLES
 QLast Update : Mon Mar 30 14:41:30 2020
 Response via : Initial Calibration
 Integrator: ChemStation

Volume Inj. : 2 µl
 Signal #1 Phase : ZB-MR1 Signal #2 Phase: ZB-MR2
 Signal #1 Info : 30Mx0.32mmx 0.50µ Signal #2 Info : 30M x 0.32mm x 0.25µm

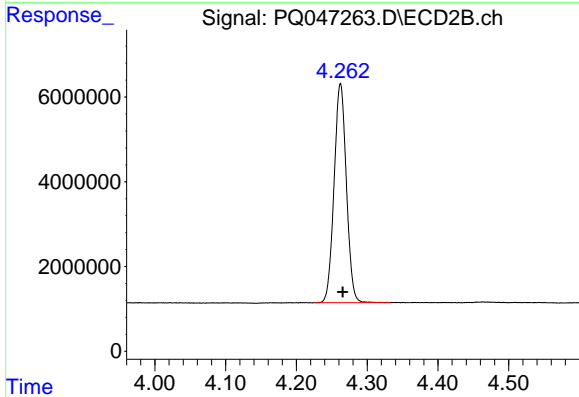




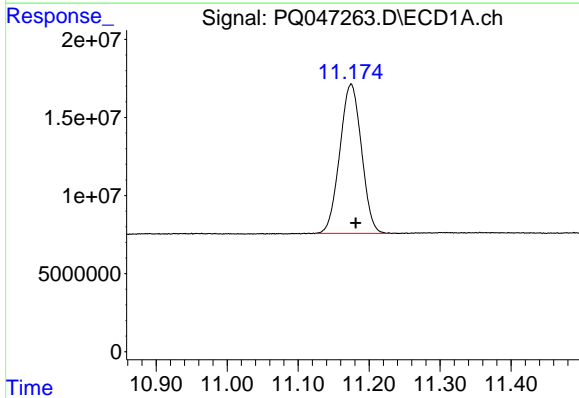
#1 Tetrachloro-m-xylene
 R.T.: 5.104 min
 Delta R.T.: -0.004 min
 Response: 446652158
 Conc: 24.70 ng/ml

Instrument :
 ECD_Q
 ClientSampled :
 I.BLK

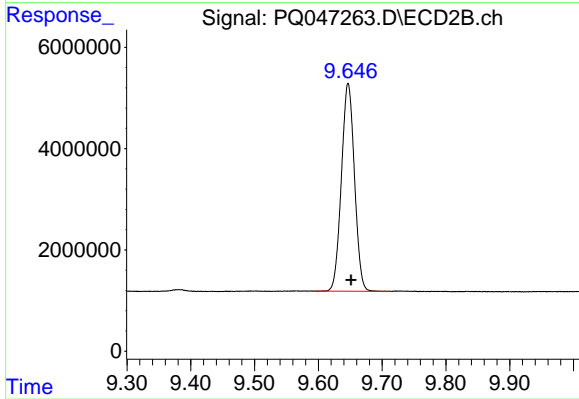
Manual Integrations
 APPROVED
 Sohil
 4/6/2020 10:51:26 AM



#1 Tetrachloro-m-xylene
 R.T.: 4.262 min
 Delta R.T.: -0.003 min
 Response: 62292102
 Conc: 25.89 ng/ml



#2 Decachlorobiphenyl
 R.T.: 11.174 min
 Delta R.T.: -0.007 min
 Response: 202837573
 Conc: 23.93 ng/ml m



#2 Decachlorobiphenyl
 R.T.: 9.647 min
 Delta R.T.: -0.004 min
 Response: 58372926
 Conc: 24.95 ng/ml