

Data Path : Z:\pestpcbsrv\HPCHEM1\ECD_Q\Data\PQ040820\
 Data File : PQ047313.D
 Signal(s) : Signal #1: ECD1A.ch Signal #2: ECD2B.ch
 Acq On : 08 Apr 2020 09:06
 Operator : AJ\MA
 Sample : L2151-07
 Misc :
 ALS Vial : 4 Sample Multiplier: 1

Instrument :
 ECD_Q
 ClientSampleId :
 MH-J

Integration File signal 1: autoint1.e
 Integration File signal 2: autoint2.e
 Quant Time: Apr 08 12:40:51 2020
 Quant Method : Z:\pestpcbsrv\HPCHEM1\ECD_Q\Method\PQ040720.M
 Quant Title : GC EXTRACTABLES
 QLast Update : Tue Apr 07 06:16:03 2020
 Response via : Initial Calibration
 Integrator: ChemStation

Volume Inj. : 2 µl
 Signal #1 Phase : ZB-MR1 Signal #2 Phase: ZB-MR2
 Signal #1 Info : 30Mx0.32mmx 0.50µ Signal #2 Info : 30M x 0.32mm x 0.25µm

| Compound | RT#1 | RT#2 | Resp#1 | Resp#2 | ng/ml | ng/ml |
|-----------------------------|--------|-------|----------|----------|---------|---------|
| ----- | | | | | | |
| System Monitoring Compounds | | | | | | |
| 1) SA Tetrachlo... | 5.112 | 4.261 | 331.2E6 | 45839827 | 20.065 | 18.726 |
| 2) SA Decachlor... | 11.188 | 9.650 | 186.0E6 | 52162393 | 21.893 | 19.562 |
| Target Compounds | | | | | | |
| 3) L1 AR-1016-1 | 6.355 | 0.000 | 4917562 | 0 | 8.353 | N.D. # |
| 9) L2 AR-1221-2 | 5.464 | 0.000 | 4412857 | 0 | 28.290 | N.D. # |
| 12) L3 AR-1232-2 | 6.169 | 0.000 | 66986441 | 0 | 375.329 | N.D. # |
| 16) L4 AR-1242-1 | 6.355 | 0.000 | 4917562 | 0 | 11.429 | N.D. # |
| 21) L5 AR-1248-1 | 6.355 | 0.000 | 4917562 | 0 | 15.424 | N.D. # |
| 34) L7 AR-1260-4 | 8.974 | 0.000 | 11220710 | 0 | 20.498 | N.D. # |
| 35) L7 AR-1260-5 | 0.000 | 8.217 | 0 | 2371589 | N.D. | 7.713 # |
| 37) L8 AR-1262-2 | 0.000 | 8.217 | 0 | 2371589 | N.D. | 7.328 # |

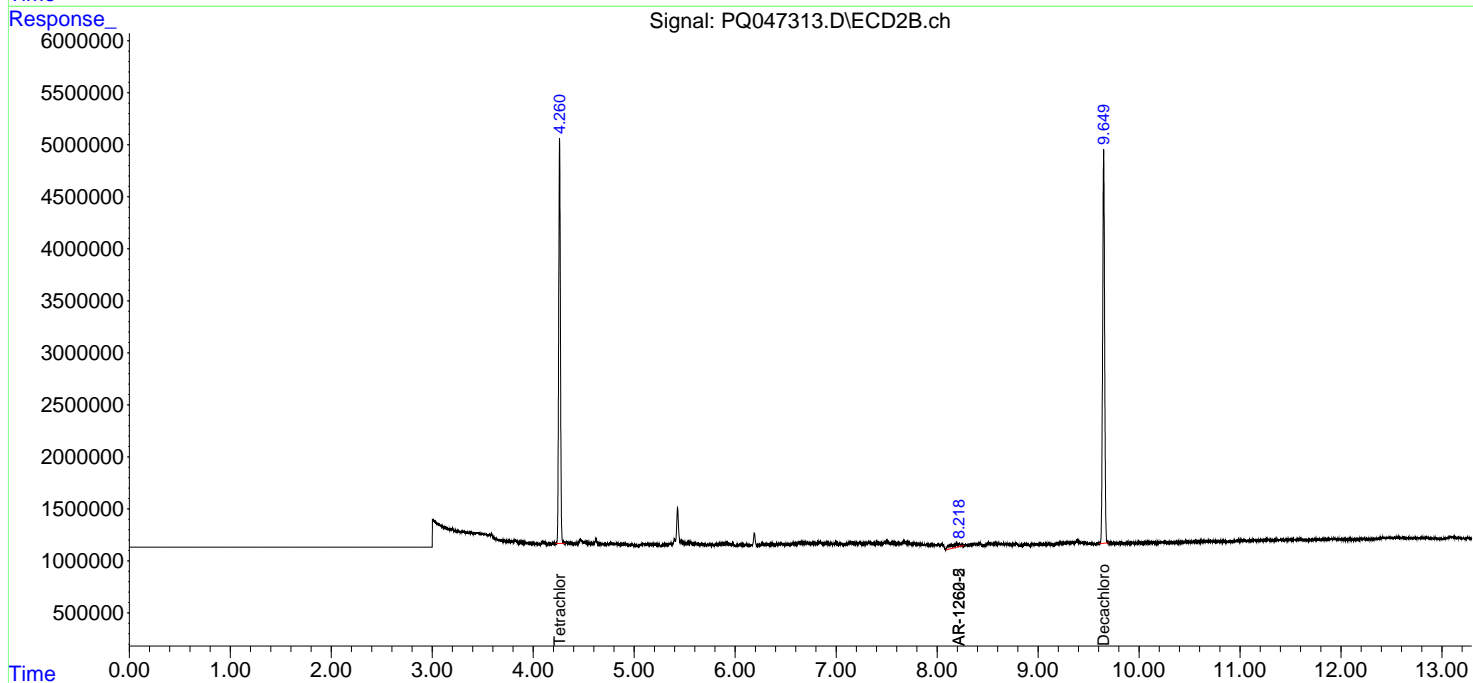
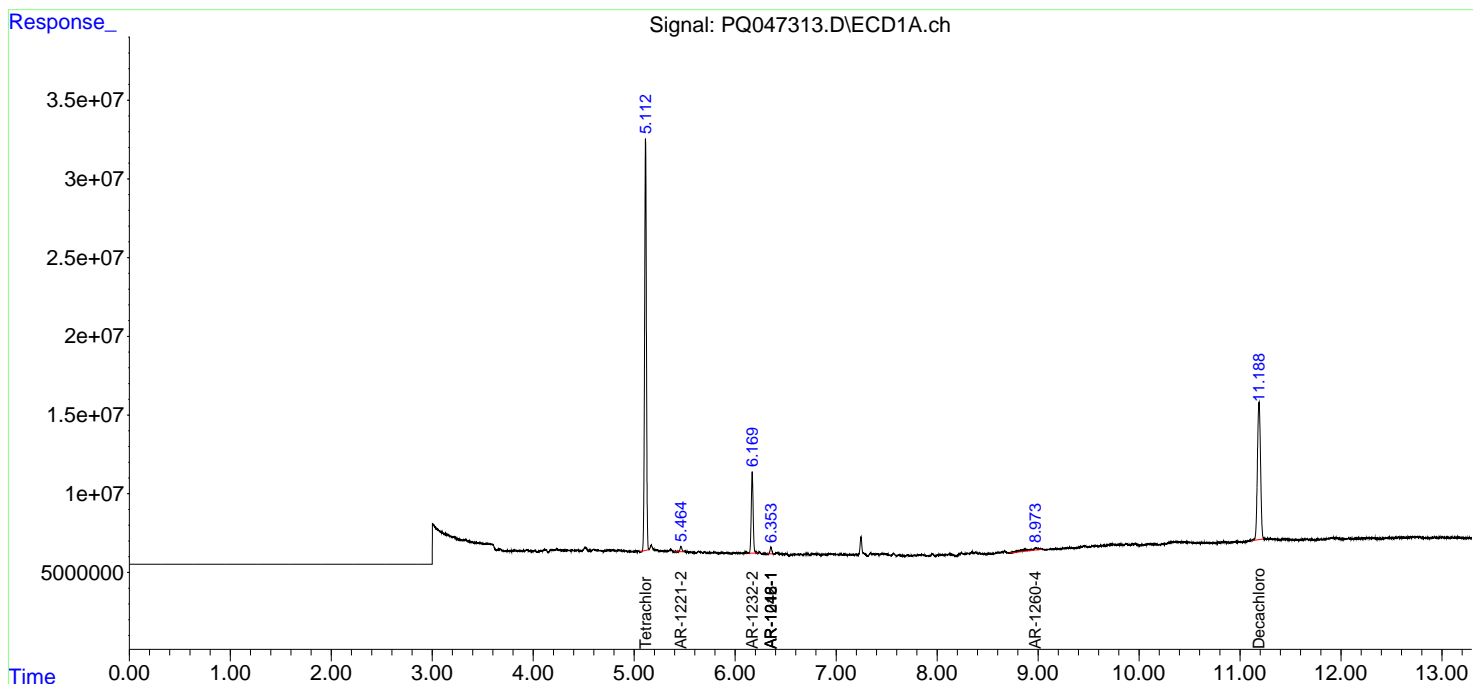
(f)=RT Delta > 1/2 Window (#)=Amounts differ by > 25% (m)=manual int.

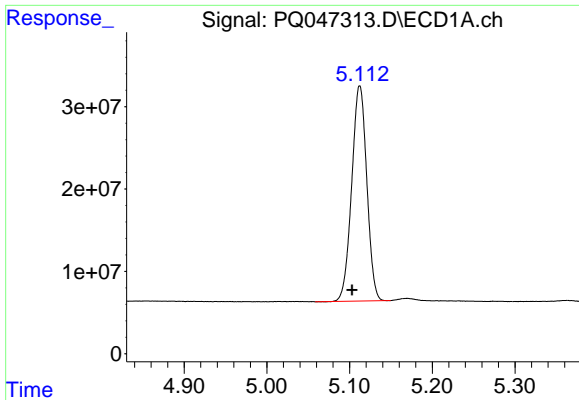
Data Path : Z:\pestpcbsrv\HPCHEM1\ECD_Q\Data\PQ040820\
 Data File : PQ047313.D
 Signal(s) : Signal #1: ECD1A.ch Signal #2: ECD2B.ch
 Acq On : 08 Apr 2020 09:06
 Operator : AJ\MA
 Sample : L2151-07
 Misc :
 ALS Vial : 4 Sample Multiplier: 1

Instrument :
 ECD_Q
 ClientSampled :
 MH-J

Integration File signal 1: autoint1.e
 Integration File signal 2: autoint2.e
 Quant Time: Apr 08 12:40:51 2020
 Quant Method : Z:\pestpcbsrv\HPCHEM1\ECD_Q\Method\PQ040720.M
 Quant Title : GC EXTRACTABLES
 QLast Update : Tue Apr 07 06:16:03 2020
 Response via : Initial Calibration
 Integrator: ChemStation

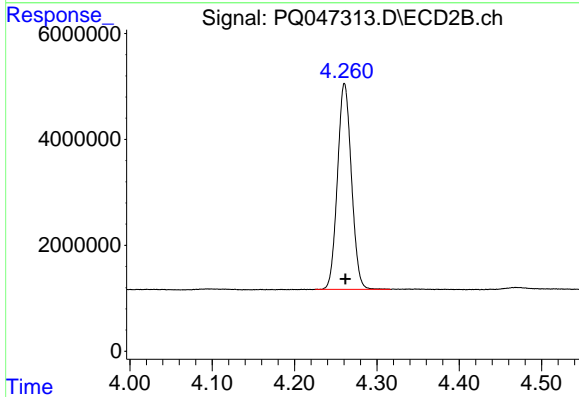
Volume Inj. : 2 µl
 Signal #1 Phase : ZB-MR1 Signal #2 Phase: ZB-MR2
 Signal #1 Info : 30Mx0.32mmx 0.50µ Signal #2 Info : 30M x 0.32mm x 0.25µm



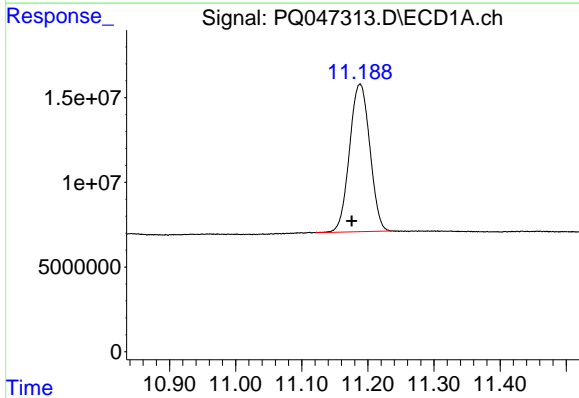


#1 Tetrachloro-m-xylene
R.T.: 5.112 min
Delta R.T.: 0.009 min
Response: 331151145
Conc: 20.06 ng/ml

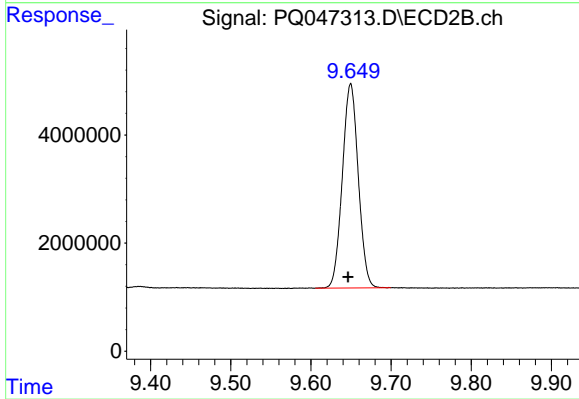
Instrument :
ECD_Q
ClientSampled :
MH-J



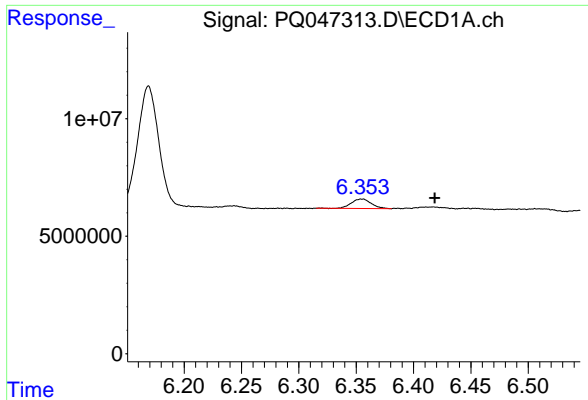
#1 Tetrachloro-m-xylene
R.T.: 4.261 min
Delta R.T.: 0.000 min
Response: 45839827
Conc: 18.73 ng/ml



#2 Decachlorobiphenyl
R.T.: 11.188 min
Delta R.T.: 0.013 min
Response: 185977460
Conc: 21.89 ng/ml



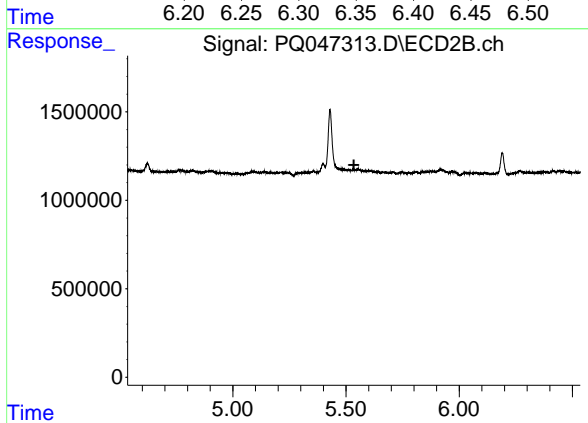
#2 Decachlorobiphenyl
R.T.: 9.650 min
Delta R.T.: 0.003 min
Response: 52162393
Conc: 19.56 ng/ml



#3 AR-1016-1

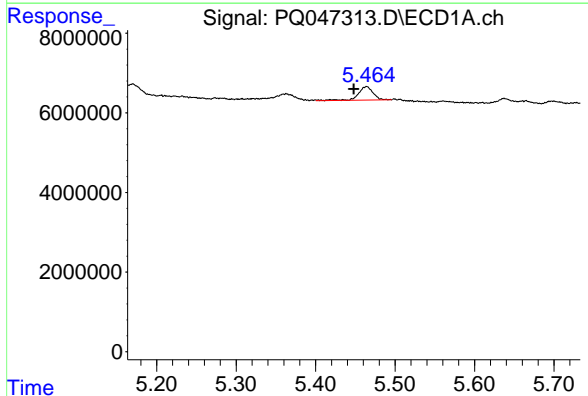
R.T.: 6.355 min
 Delta R.T.: -0.063 min
 Response: 4917562
 Conc: 8.35 ng/ml

Instrument :
 ECD_Q
 ClientSampled :
 MH-J



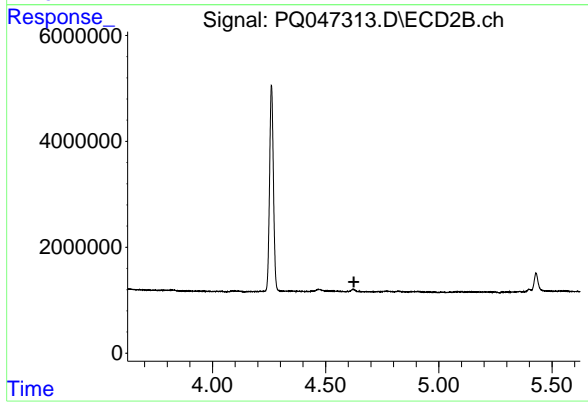
#3 AR-1016-1

R.T.: 0.000 min
 Exp R.T. : 5.535 min
 Response: 0
 Conc: N.D.



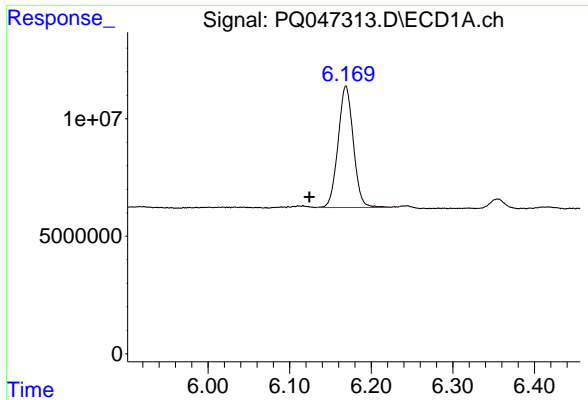
#9 AR-1221-2

R.T.: 5.464 min
 Delta R.T.: 0.016 min
 Response: 4412857
 Conc: 28.29 ng/ml



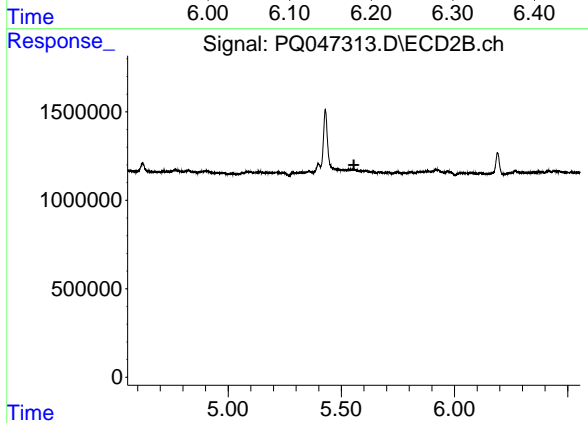
#9 AR-1221-2

R.T.: 0.000 min
 Exp R.T. : 4.625 min
 Response: 0
 Conc: N.D.

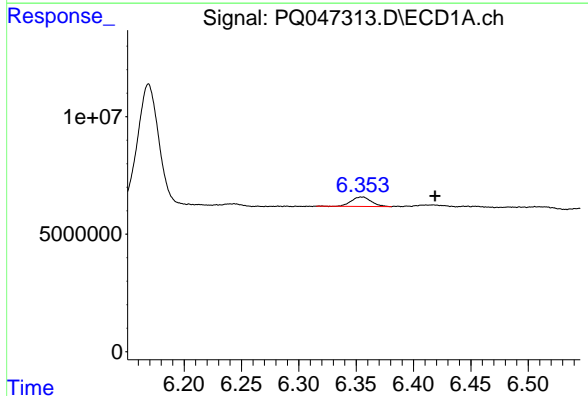


#12 AR-1232-2
 R.T.: 6.169 min
 Delta R.T.: 0.045 min
 Response: 66986441
 Conc: 375.33 ng/ml

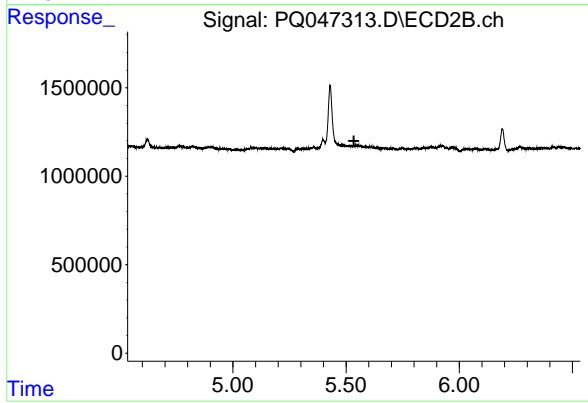
Instrument :
 ECD_Q
 ClientSampleId :
 MH-J



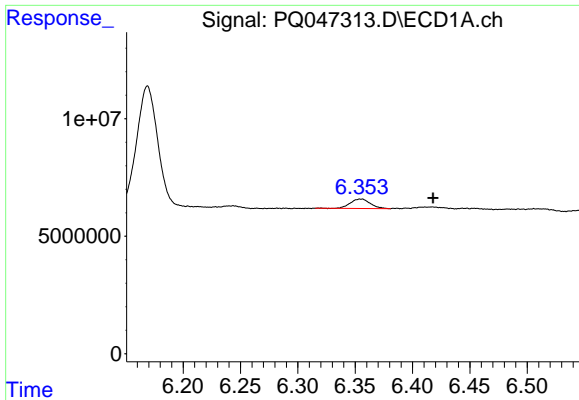
#12 AR-1232-2
 R.T.: 0.000 min
 Exp R.T. : 5.555 min
 Response: 0
 Conc: N.D.



#16 AR-1242-1
 R.T.: 6.355 min
 Delta R.T.: -0.064 min
 Response: 4917562
 Conc: 11.43 ng/ml



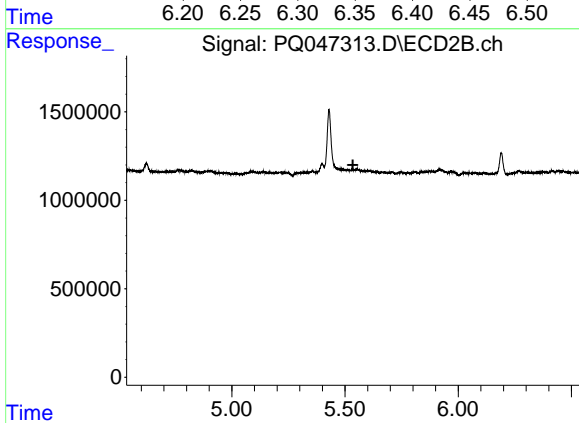
#16 AR-1242-1
 R.T.: 0.000 min
 Exp R.T. : 5.534 min
 Response: 0
 Conc: N.D.



#21 AR-1248-1

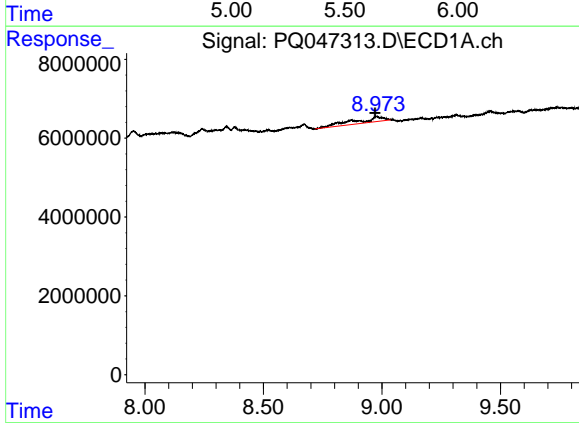
R.T.: 6.355 min
 Delta R.T.: -0.063 min
 Response: 4917562
 Conc: 15.42 ng/ml

Instrument :
 ECD_Q
 ClientSampled :
 MH-J



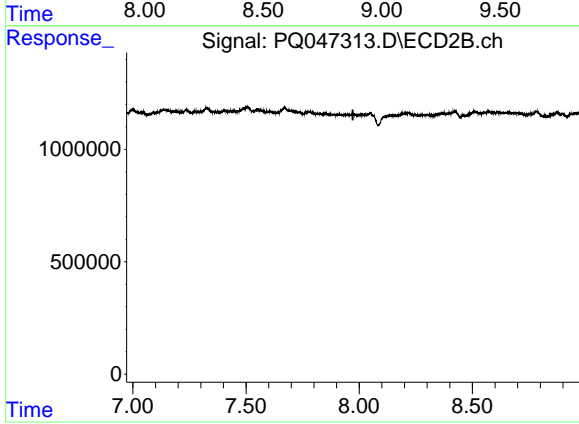
#21 AR-1248-1

R.T.: 0.000 min
 Exp R.T. : 5.535 min
 Response: 0
 Conc: N.D.



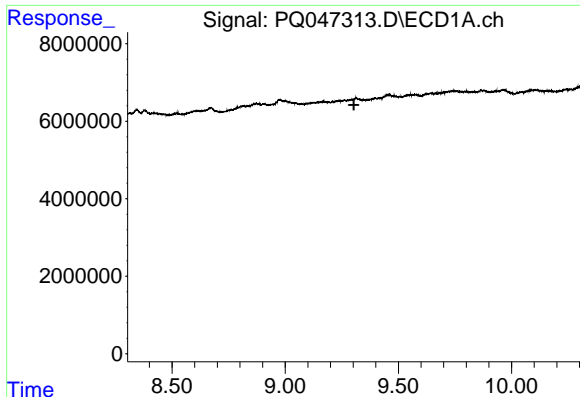
#34 AR-1260-4

R.T.: 8.974 min
 Delta R.T.: 0.003 min
 Response: 11220710
 Conc: 20.50 ng/ml



#34 AR-1260-4

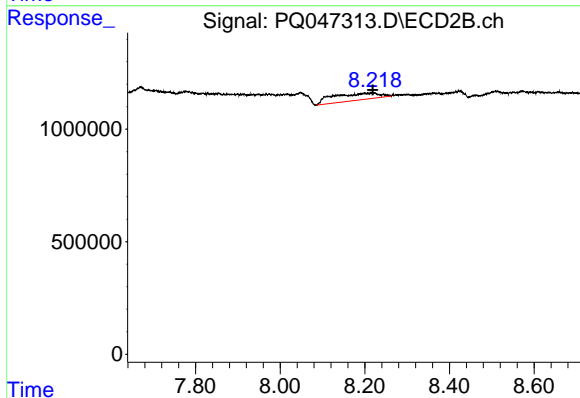
R.T.: 0.000 min
 Exp R.T. : 7.972 min
 Response: 0
 Conc: N.D.



#35 AR-1260-5

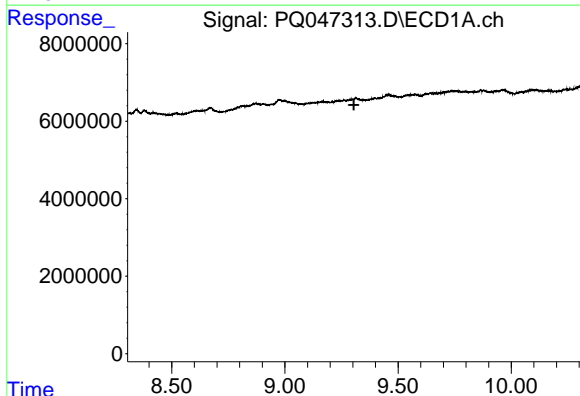
R.T.: 0.000 min
 Exp R.T. : 9.304 min
 Response: 0
 Conc: N.D.

Instrument :
 ECD_Q
 ClientSampled :
 MH-J



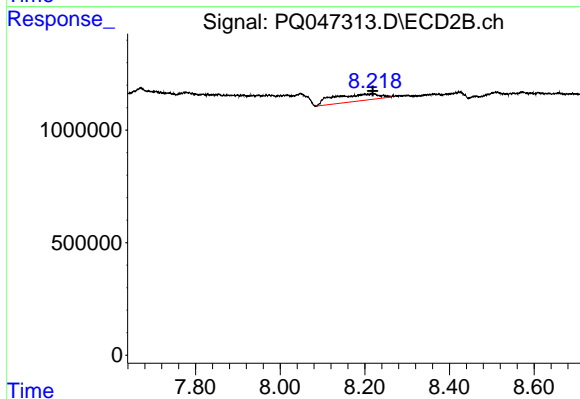
#35 AR-1260-5

R.T.: 8.217 min
 Delta R.T.: -0.002 min
 Response: 2371589
 Conc: 7.71 ng/ml



#37 AR-1262-2

R.T.: 0.000 min
 Exp R.T. : 9.305 min
 Response: 0
 Conc: N.D.



#37 AR-1262-2

R.T.: 8.217 min
 Delta R.T.: -0.002 min
 Response: 2371589
 Conc: 7.33 ng/ml