

Data Path : Z:\pestpcbsrv\HPCHEM1\ECD_Q\Data\PQ040820\
 Data File : PQ047341.D
 Signal(s) : Signal #1: ECD1A.ch Signal #2: ECD2B.ch
 Acq On : 08 Apr 2020 18:59
 Operator : AJ\MA
 Sample : L2081-19
 Misc :
 ALS Vial : 30 Sample Multiplier: 1

Instrument :
 ECD_Q
 ClientSampled :
 S8-09-B

Integration File signal 1: autoint1.e
 Integration File signal 2: autoint2.e
 Quant Time: Apr 09 01:48:40 2020
 Quant Method : Z:\pestpcbsrv\HPCHEM1\ECD_Q\Method\PQ040720.M
 Quant Title : GC EXTRACTABLES
 QLast Update : Tue Apr 07 06:16:03 2020
 Response via : Initial Calibration
 Integrator: ChemStation

Volume Inj. : 2 µl
 Signal #1 Phase : ZB-MR1 Signal #2 Phase: ZB-MR2
 Signal #1 Info : 30Mx0.32mmx 0.50µ Signal #2 Info : 30M x 0.32mm x 0.25µm

Compound	RT#1	RT#2	Resp#1	Resp#2	ng/ml	ng/ml

System Monitoring Compounds						
1) SA Tetrachlo...	5.105	4.263	338.0E6	52466730	20.477	21.433
2) SA Decachlor...	11.177	9.647	116.6E6	35977866	13.724	13.492
Target Compounds						
3) L1 AR-1016-1	6.442	5.563	7219712	1476830	12.263	16.146 #
4) L1 AR-1016-2	6.442	5.563	7219712	1476830	8.749	11.926 #
5) L1 AR-1016-3	6.518	5.750	6208671	2329828	12.410	36.455 #
6) L1 AR-1016-4	6.588	5.802	91502294	829800	222.628	16.112 #
8) L2 AR-1221-1	0.000	4.513	0	1276062	N.D.	43.409 #
9) L2 AR-1221-2	5.455	4.623	4698457	1242093	30.120	56.182 #
10) L2 AR-1221-3	5.554	4.691	8438758	789942	17.895	11.265 #
11) L3 AR-1232-1	5.554	4.691	8438758	789942	26.201	16.638 #
12) L3 AR-1232-2	6.097	5.563	24460908	1476830	137.056	29.917 #
13) L3 AR-1232-3	6.442	5.750	7219712	2329828	21.541	91.539 #
14) L3 AR-1232-4	6.588	5.869	91502294	1905979	538.012	84.517 #
15) L3 AR-1232-5	6.712	6.037	13056749	-117322	104.455	N.D. #
16) L4 AR-1242-1	6.442	5.563	7219712	1476830	16.780	21.817 #
17) L4 AR-1242-2	6.442	5.563	7219712	1476830	12.019	16.269 #
18) L4 AR-1242-3	6.518	5.750	6208671	2329828	16.924	47.829 #
19) L4 AR-1242-4	6.588	5.869	91502294	1905979	299.227	40.751 #
20) L4 AR-1242-5	7.423	6.421	31433514	20122109	98.493	321.370 #
21) L5 AR-1248-1	6.442	5.563	7219712	1476830	22.644	29.433 #
22) L5 AR-1248-2	6.712	5.802	13056749	829800	31.339	13.019 #
23) L5 AR-1248-3	6.938	5.869	-2181896	1905979	N.D.	29.362 #
24) L5 AR-1248-4	7.341	6.037	134.1E6	-117322	258.461	N.D. #
25) L5 AR-1248-5	7.423	6.462	31433514	2457875	64.494	30.170 #
26) L6 AR-1254-1	7.341	6.421	134.1E6	20122109	213.131	132.727 #
27) L6 AR-1254-2	7.569	6.571	87443136	3954536	93.021	30.098 #
28) L6 AR-1254-3	7.944	6.998	51315826	6177685	54.544	28.487 #
29) L6 AR-1254-4	8.232	7.237	17282946	1708586	22.947	12.016 #
30) L6 AR-1254-5	8.662	7.668	35953246	5026124	52.487	26.296 #
31) L7 AR-1260-1	8.103	7.133	21510351	3297406	36.125	26.482 #
32) L7 AR-1260-2	8.367	7.328	75401804	4996423	101.523	32.129 #
33) L7 AR-1260-3	8.737	7.488	18986816	2967050	33.175	20.869 #
34) L7 AR-1260-4	8.992	7.970	55712213	3397834	101.774	27.946 #
35) L7 AR-1260-5	9.303	8.219	18033940	6128287	15.830	19.932 #
36) L8 AR-1262-1	8.737	7.668	18986816	5026124	23.770	58.101 #
37) L8 AR-1262-2	9.303	8.219	18033940	6128287	14.626	18.935 #
38) L8 AR-1262-3	9.624	8.506	48653874	10285903	60.875	82.478 #
39) L8 AR-1262-4	9.722	8.572	39794554	13296202	66.445	56.326
40) L8 AR-1262-5	10.399	9.080	12005493	3761070	30.105	33.693
41) L9 AR-1268-1	9.624	8.506	48653874	10285903	32.355	25.972
42) L9 AR-1268-2	9.722	8.572	39794554	13296202	30.660	36.234

Data Path : Z:\pestpcbsrv\HPCHEM1\ECD_Q\Data\PQ040820\
 Data File : PQ047341.D
 Signal(s) : Signal #1: ECD1A.ch Signal #2: ECD2B.ch
 Acq On : 08 Apr 2020 18:59
 Operator : AJ\MA
 Sample : L2081-19
 Misc :
 ALS Vial : 30 Sample Multiplier: 1

Instrument :
 ECD_Q
 ClientSampleId :
 S8-09-B

Integration File signal 1: autoint1.e
 Integration File signal 2: autoint2.e
 Quant Time: Apr 09 01:48:40 2020
 Quant Method : Z:\pestpcbsrv\HPCHEM1\ECD_Q\Method\PQ040720.M
 Quant Title : GC EXTRACTABLES
 QLast Update : Tue Apr 07 06:16:03 2020
 Response via : Initial Calibration
 Integrator: ChemStation

Volume Inj. : 2 µl
 Signal #1 Phase : ZB-MR1 Signal #2 Phase: ZB-MR2
 Signal #1 Info : 30Mx0.32mmx 0.50µ Signal #2 Info : 30M x 0.32mm x 0.25µm

	Compound	RT#1	RT#2	Resp#1	Resp#2	ng/ml	ng/ml
43)	L9 AR-1268-3	9.956	8.781	32886398	8579562	30.233	28.415
44)	L9 AR-1268-4	10.399	9.080	12005493	3761070	25.389	28.621
45)	L9 AR-1268-5	10.828	9.383	81903120	22009614	27.422	21.836

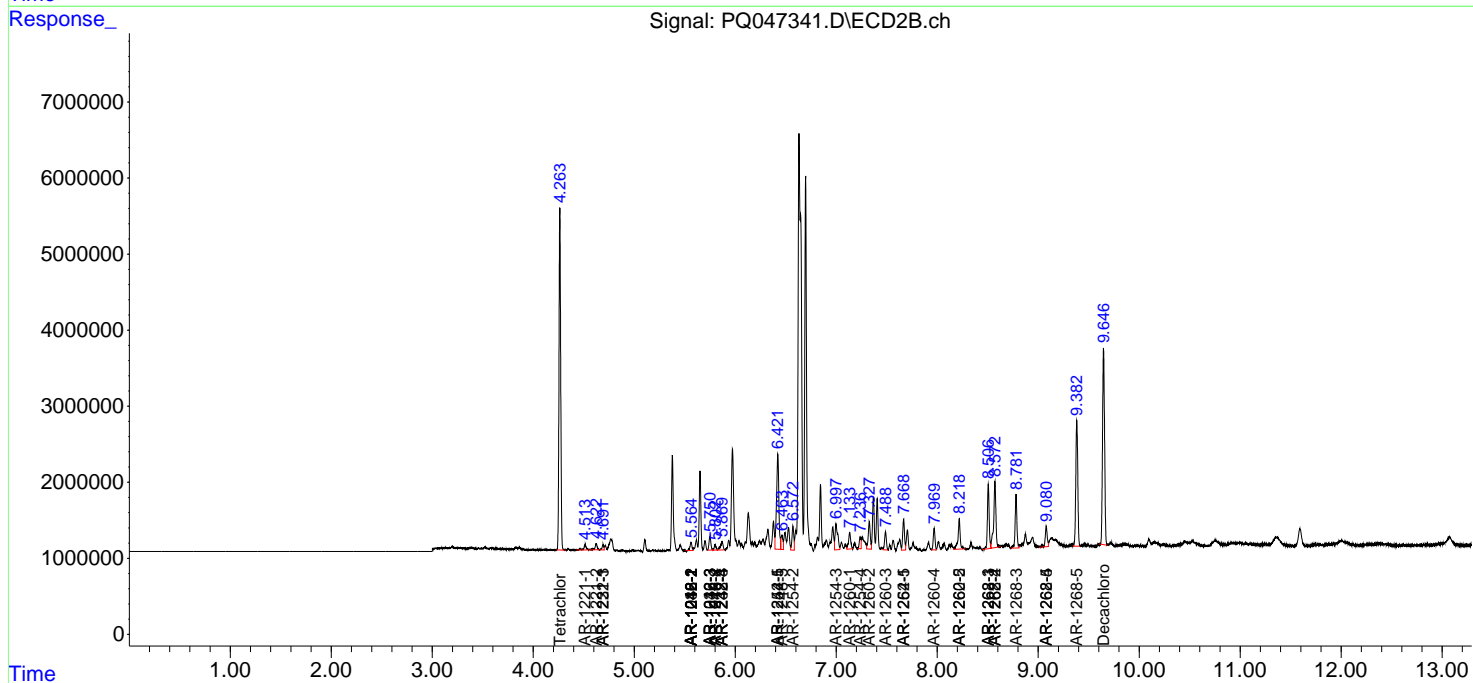
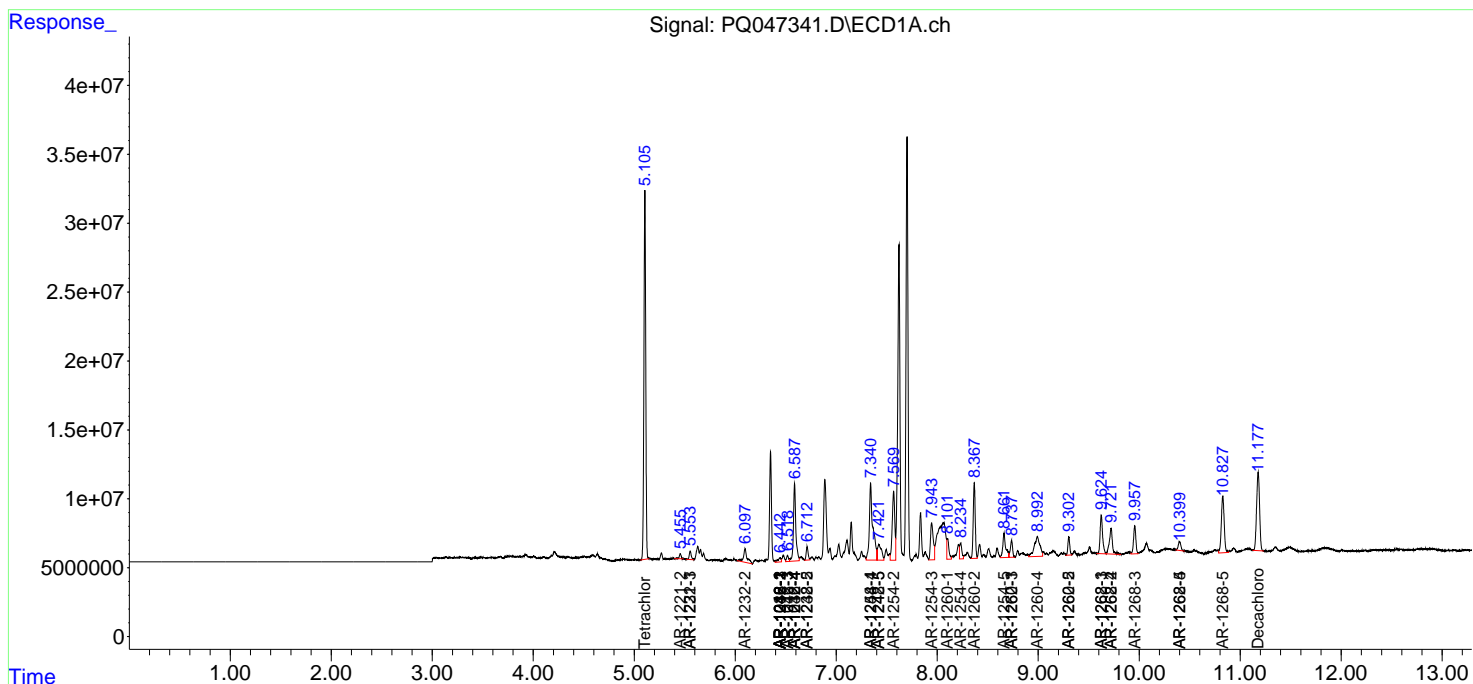
(f)=RT Delta > 1/2 Window (#)=Amounts differ by > 25% (m)=manual int.

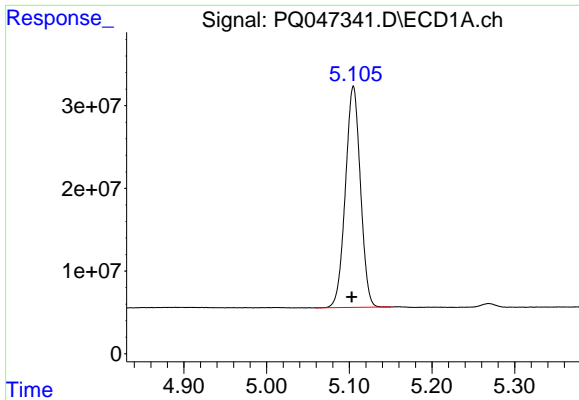
Data Path : Z:\pestpcbsrv\HPCHEM1\ECD_Q\Data\PQ040820\
 Data File : PQ047341.D
 Signal(s) : Signal #1: ECD1A.ch Signal #2: ECD2B.ch
 Acq On : 08 Apr 2020 18:59
 Operator : AJ\MA
 Sample : L2081-19
 Misc :
 ALS Vial : 30 Sample Multiplier: 1

Instrument :
 ECD_Q
 ClientSampled :
 S8-09-B

Integration File signal 1: autoint1.e
 Integration File signal 2: autoint2.e
 Quant Time: Apr 09 01:48:40 2020
 Quant Method : Z:\pestpcbsrv\HPCHEM1\ECD_Q\Method\PQ040720.M
 Quant Title : GC EXTRACTABLES
 QLast Update : Tue Apr 07 06:16:03 2020
 Response via : Initial Calibration
 Integrator: ChemStation

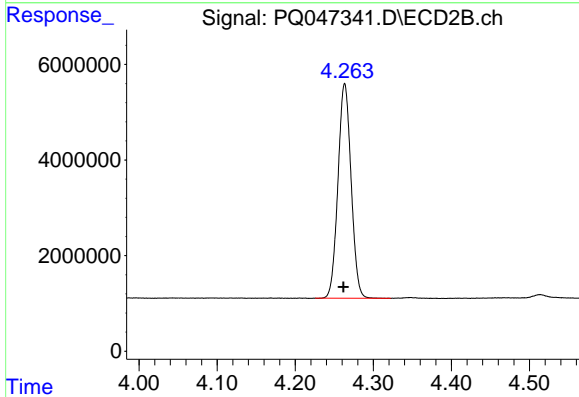
Volume Inj. : 2 µl
 Signal #1 Phase : ZB-MR1 Signal #2 Phase: ZB-MR2
 Signal #1 Info : 30Mx0.32mmx 0.50µ Signal #2 Info : 30M x 0.32mm x 0.25µm



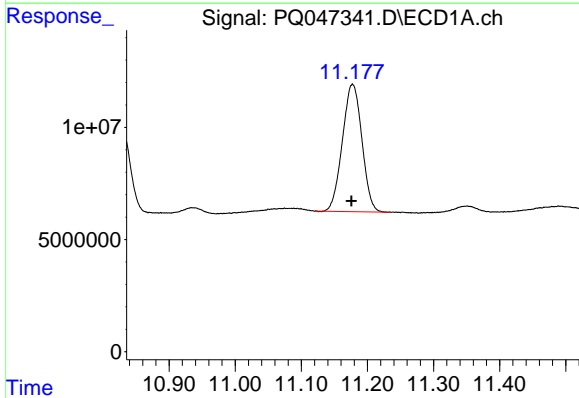


#1 Tetrachloro-m-xylene
 R.T.: 5.105 min
 Delta R.T.: 0.002 min
 Response: 337956467
 Conc: 20.48 ng/ml

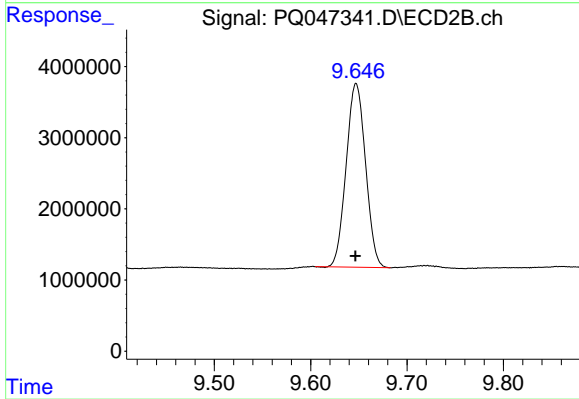
Instrument :
 ECD_Q
 ClientSampled :
 S8-09-B



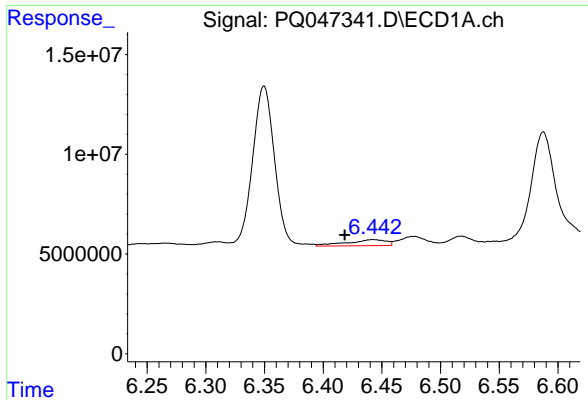
#1 Tetrachloro-m-xylene
 R.T.: 4.263 min
 Delta R.T.: 0.002 min
 Response: 52466730
 Conc: 21.43 ng/ml



#2 Decachlorobiphenyl
 R.T.: 11.177 min
 Delta R.T.: 0.002 min
 Response: 116583288
 Conc: 13.72 ng/ml

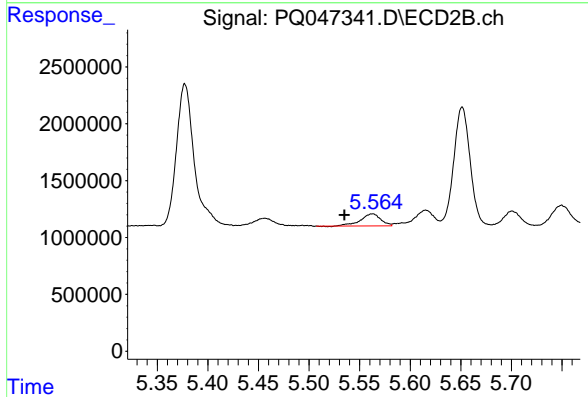


#2 Decachlorobiphenyl
 R.T.: 9.647 min
 Delta R.T.: 0.000 min
 Response: 35977866
 Conc: 13.49 ng/ml

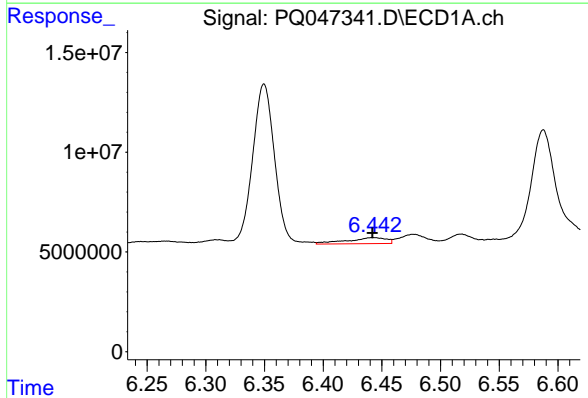


#3 AR-1016-1
 R.T.: 6.442 min
 Delta R.T.: 0.024 min
 Response: 7219712
 Conc: 12.26 ng/ml

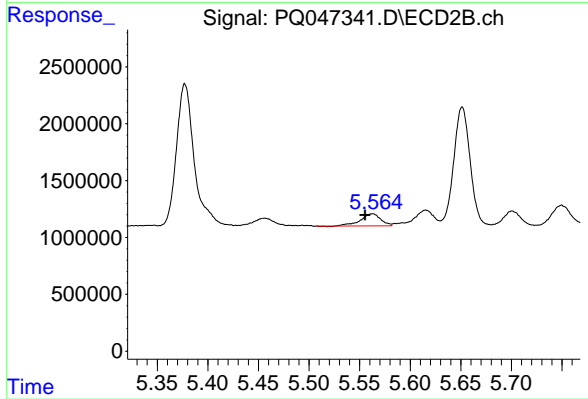
Instrument :
 ECD_Q
 ClientSampleId :
 S8-09-B



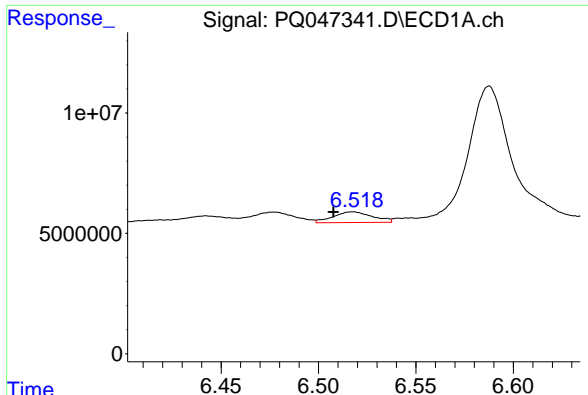
#3 AR-1016-1
 R.T.: 5.563 min
 Delta R.T.: 0.028 min
 Response: 1476830
 Conc: 16.15 ng/ml



#4 AR-1016-2
 R.T.: 6.442 min
 Delta R.T.: 0.000 min
 Response: 7219712
 Conc: 8.75 ng/ml



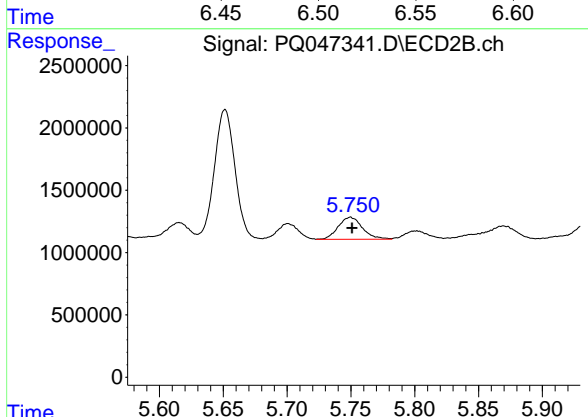
#4 AR-1016-2
 R.T.: 5.563 min
 Delta R.T.: 0.007 min
 Response: 1476830
 Conc: 11.93 ng/ml



#5 AR-1016-3

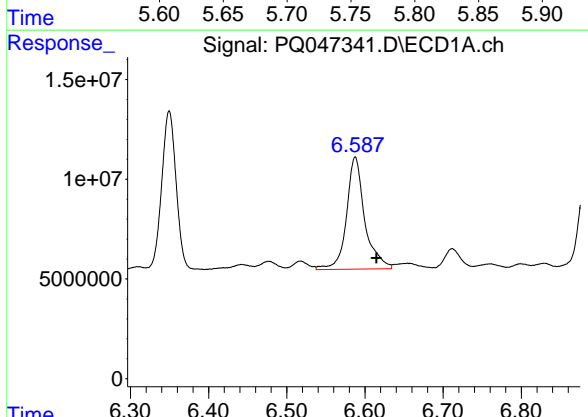
R.T.: 6.518 min
 Delta R.T.: 0.010 min
 Response: 6208671
 Conc: 12.41 ng/ml

Instrument :
 ECD_Q
 ClientSampleId :
 S8-09-B



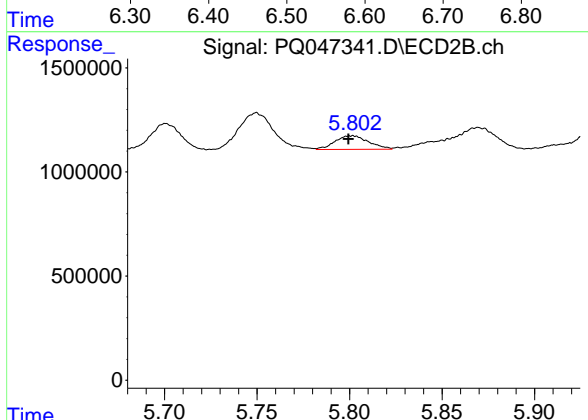
#5 AR-1016-3

R.T.: 5.750 min
 Delta R.T.: -0.001 min
 Response: 2329828
 Conc: 36.45 ng/ml



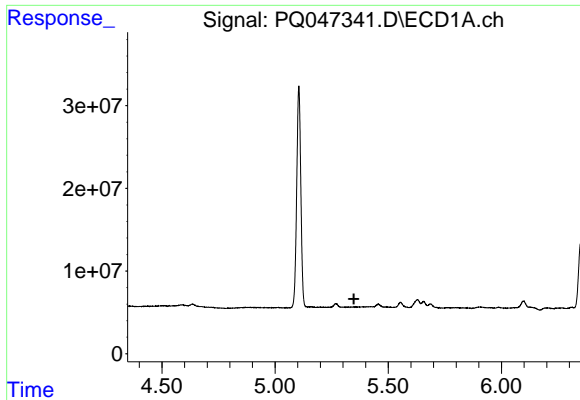
#6 AR-1016-4

R.T.: 6.588 min
 Delta R.T.: -0.027 min
 Response: 91502294
 Conc: 222.63 ng/ml



#6 AR-1016-4

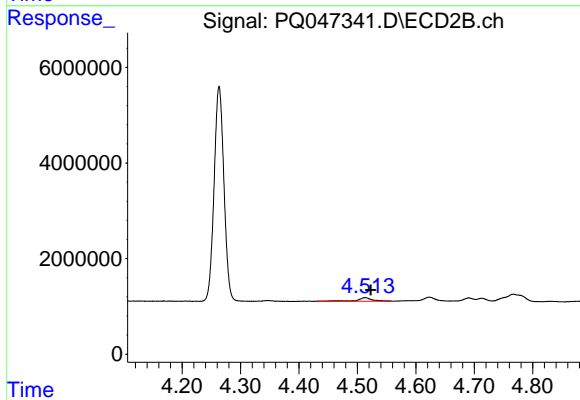
R.T.: 5.802 min
 Delta R.T.: 0.002 min
 Response: 829800
 Conc: 16.11 ng/ml



#8 AR-1221-1

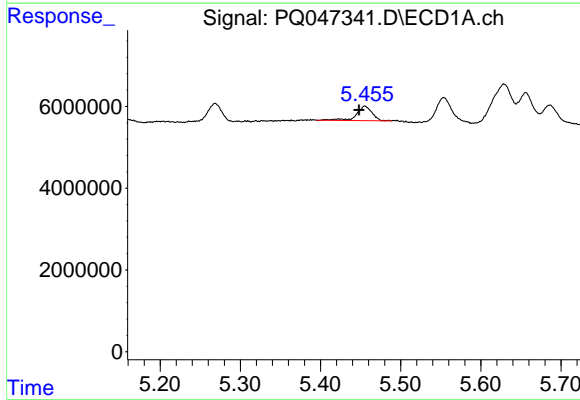
R.T.: 0.000 min
 Exp R.T.: 5.348 min
 Response: 0
 Conc: N.D.

Instrument :
 ECD_Q
 ClientSampled :
 S8-09-B



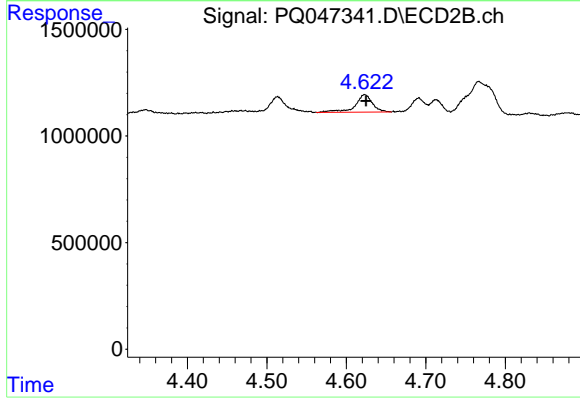
#8 AR-1221-1

R.T.: 4.513 min
 Delta R.T.: -0.010 min
 Response: 1276062
 Conc: 43.41 ng/ml



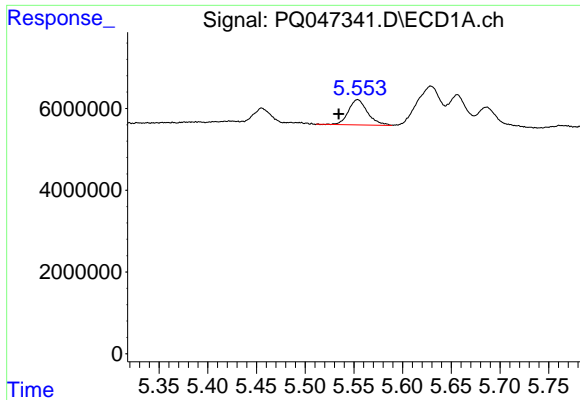
#9 AR-1221-2

R.T.: 5.455 min
 Delta R.T.: 0.007 min
 Response: 4698457
 Conc: 30.12 ng/ml



#9 AR-1221-2

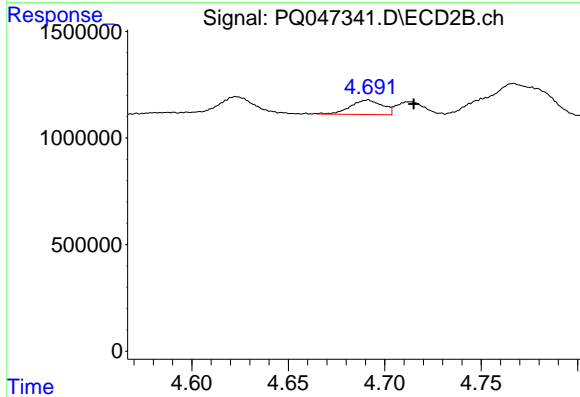
R.T.: 4.623 min
 Delta R.T.: -0.002 min
 Response: 1242093
 Conc: 56.18 ng/ml



#10 AR-1221-3

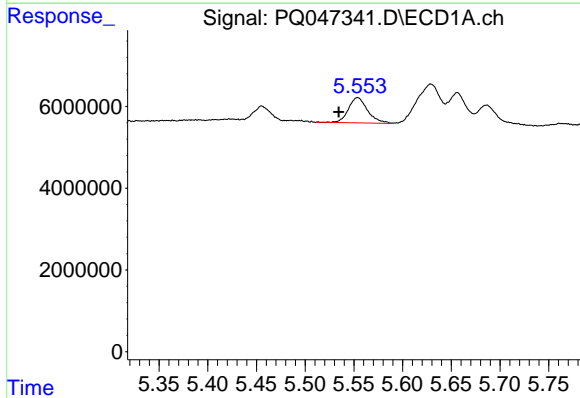
R.T.: 5.554 min
 Delta R.T.: 0.019 min
 Response: 8438758
 Conc: 17.90 ng/ml

Instrument :
 ECD_Q
 ClientSampleId :
 S8-09-B



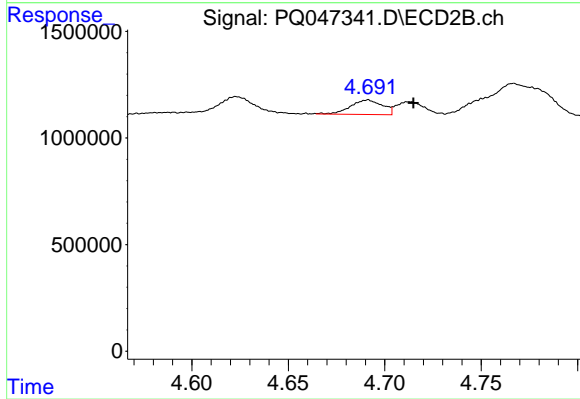
#10 AR-1221-3

R.T.: 4.691 min
 Delta R.T.: -0.024 min
 Response: 789942
 Conc: 11.27 ng/ml



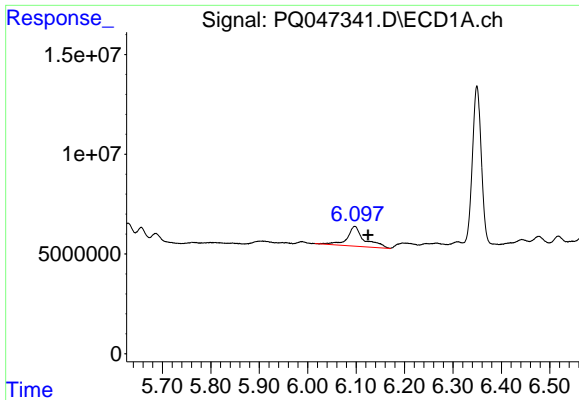
#11 AR-1232-1

R.T.: 5.554 min
 Delta R.T.: 0.019 min
 Response: 8438758
 Conc: 26.20 ng/ml



#11 AR-1232-1

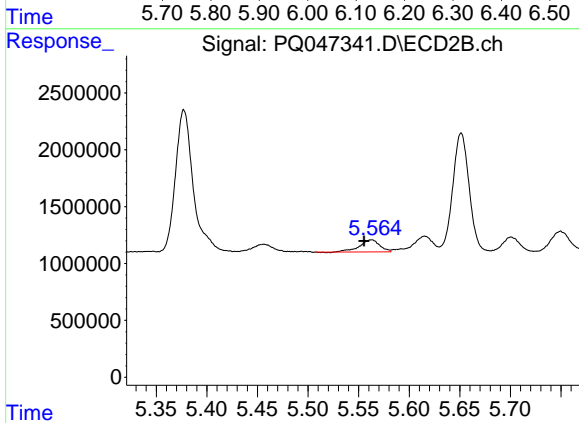
R.T.: 4.691 min
 Delta R.T.: -0.024 min
 Response: 789942
 Conc: 16.64 ng/ml



#12 AR-1232-2

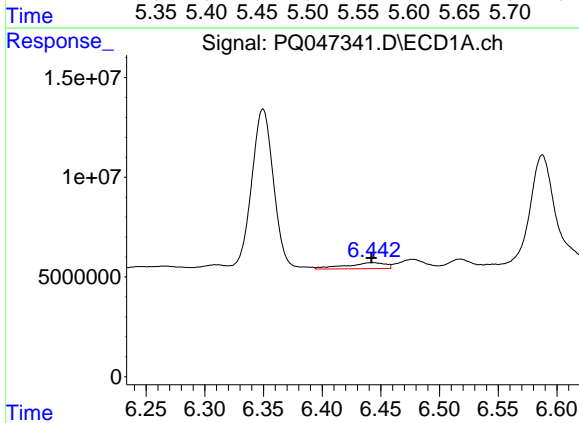
R.T.: 6.097 min
 Delta R.T.: -0.027 min
 Response: 24460908
 Conc: 137.06 ng/ml

Instrument :
 ECD_Q
 ClientSampled :
 S8-09-B



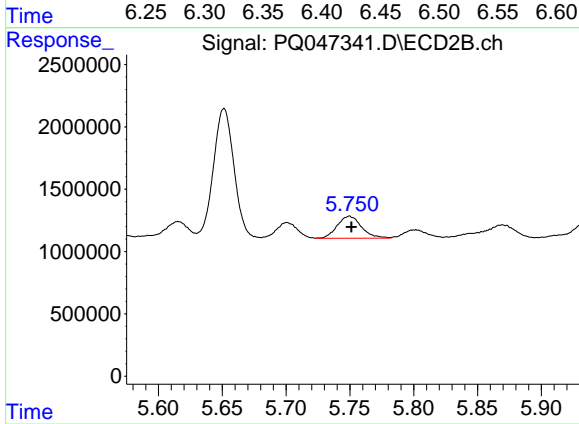
#12 AR-1232-2

R.T.: 5.563 min
 Delta R.T.: 0.007 min
 Response: 1476830
 Conc: 29.92 ng/ml



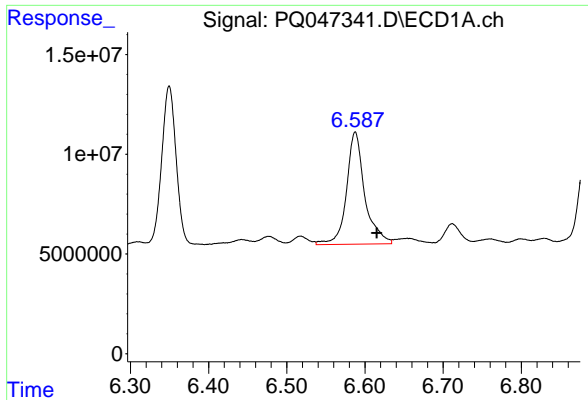
#13 AR-1232-3

R.T.: 6.442 min
 Delta R.T.: 0.000 min
 Response: 7219712
 Conc: 21.54 ng/ml



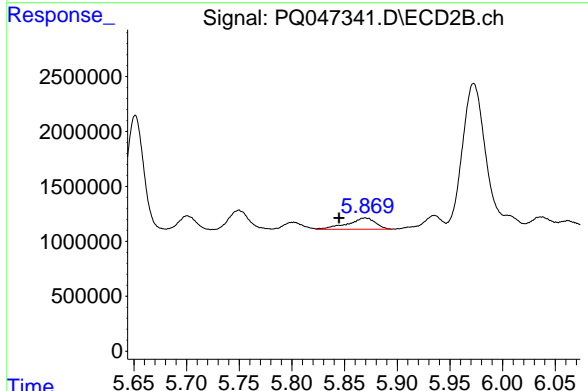
#13 AR-1232-3

R.T.: 5.750 min
 Delta R.T.: -0.002 min
 Response: 2329828
 Conc: 91.54 ng/ml

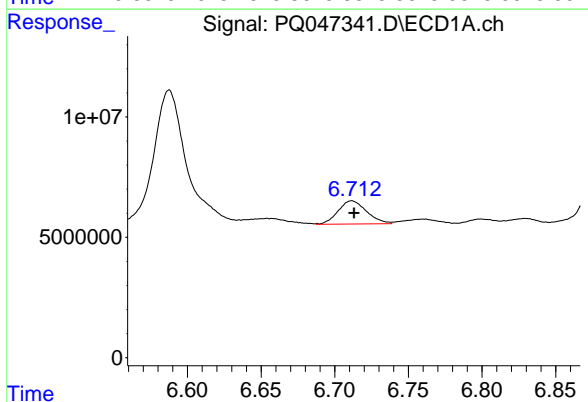


#14 AR-1232-4
 R.T.: 6.588 min
 Delta R.T.: -0.028 min
 Response: 91502294
 Conc: 538.01 ng/ml

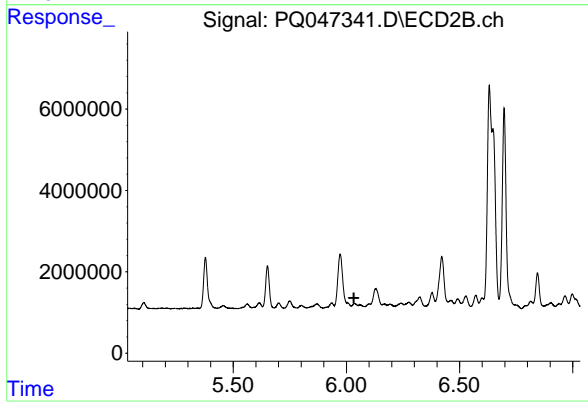
Instrument :
 ECD_Q
ClientSampled :
 S8-09-B



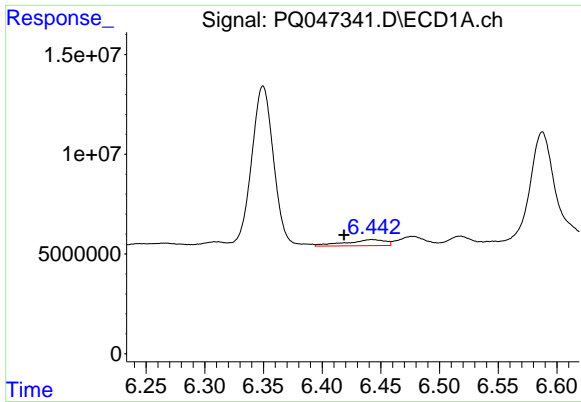
#14 AR-1232-4
 R.T.: 5.869 min
 Delta R.T.: 0.025 min
 Response: 1905979
 Conc: 84.52 ng/ml



#15 AR-1232-5
 R.T.: 6.712 min
 Delta R.T.: -0.002 min
 Response: 13056749
 Conc: 104.45 ng/ml



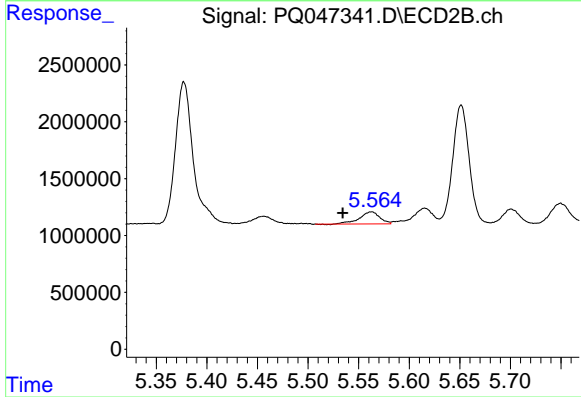
#15 AR-1232-5
 R.T.: 6.037 min
 Delta R.T.: 0.003 min
 Response: -117322
 Conc: N.D.



#16 AR-1242-1

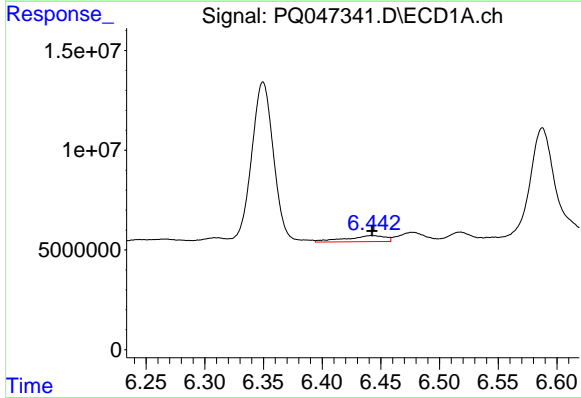
R.T.: 6.442 min
 Delta R.T.: 0.024 min
 Response: 7219712
 Conc: 16.78 ng/ml

Instrument :
 ECD_Q
 ClientSampled :
 S8-09-B



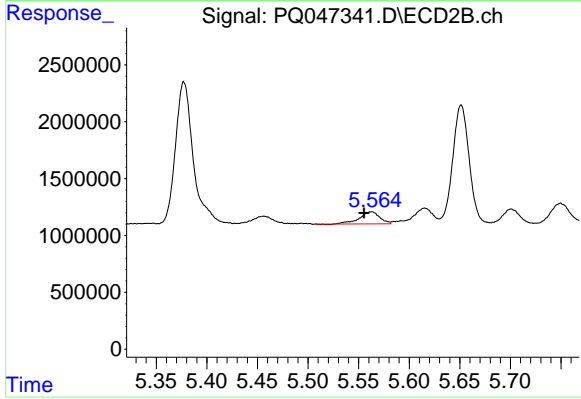
#16 AR-1242-1

R.T.: 5.563 min
 Delta R.T.: 0.028 min
 Response: 1476830
 Conc: 21.82 ng/ml



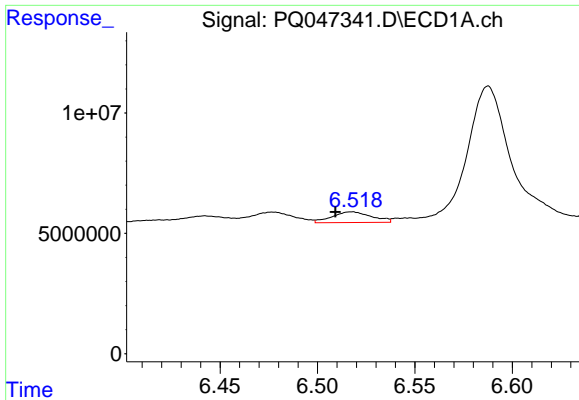
#17 AR-1242-2

R.T.: 6.442 min
 Delta R.T.: 0.000 min
 Response: 7219712
 Conc: 12.02 ng/ml



#17 AR-1242-2

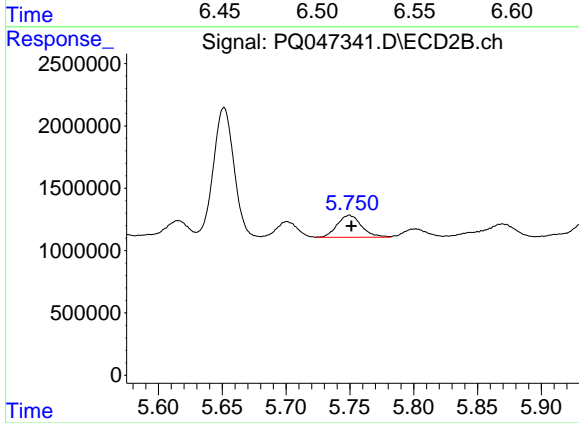
R.T.: 5.563 min
 Delta R.T.: 0.008 min
 Response: 1476830
 Conc: 16.27 ng/ml



#18 AR-1242-3

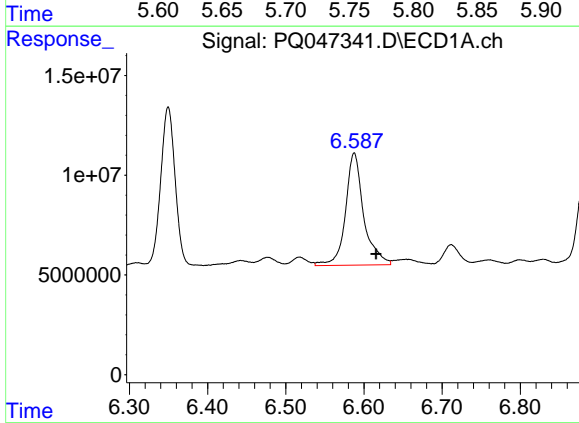
R.T.: 6.518 min
 Delta R.T.: 0.008 min
 Response: 6208671
 Conc: 16.92 ng/ml

Instrument :
 ECD_Q
 ClientSampleId :
 S8-09-B



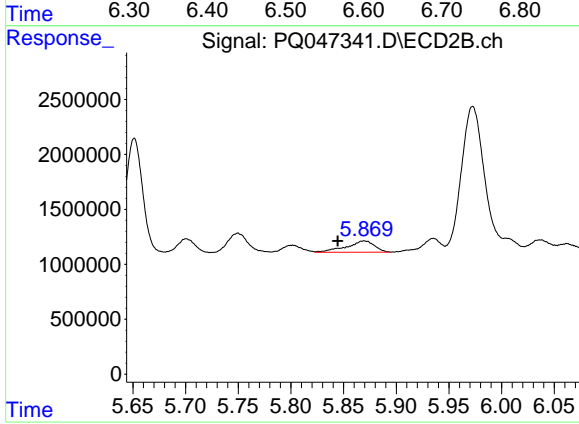
#18 AR-1242-3

R.T.: 5.750 min
 Delta R.T.: -0.002 min
 Response: 2329828
 Conc: 47.83 ng/ml



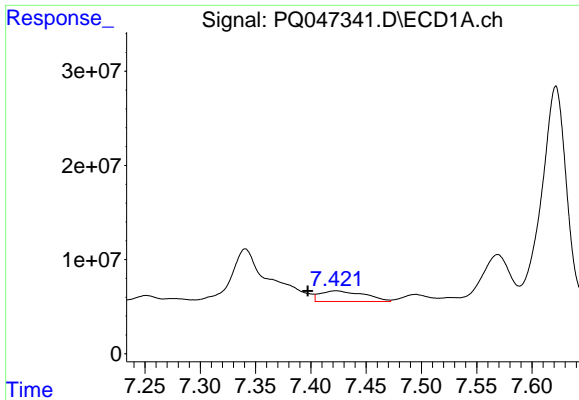
#19 AR-1242-4

R.T.: 6.588 min
 Delta R.T.: -0.028 min
 Response: 91502294
 Conc: 299.23 ng/ml



#19 AR-1242-4

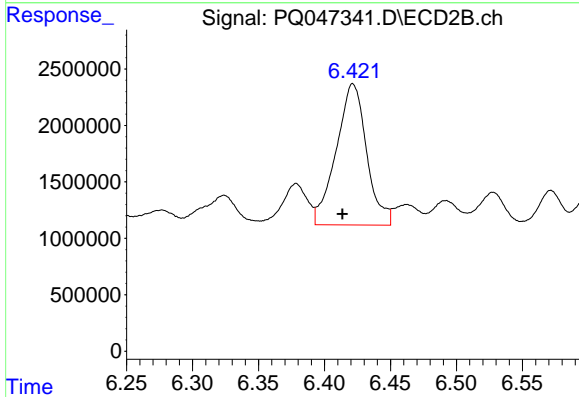
R.T.: 5.869 min
 Delta R.T.: 0.025 min
 Response: 1905979
 Conc: 40.75 ng/ml



#20 AR-1242-5

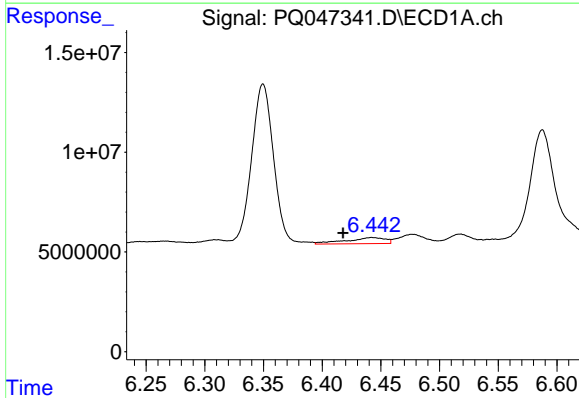
R.T.: 7.423 min
 Delta R.T.: 0.026 min
 Response: 31433514
 Conc: 98.49 ng/ml

Instrument :
 ECD_Q
 ClientSampled :
 S8-09-B



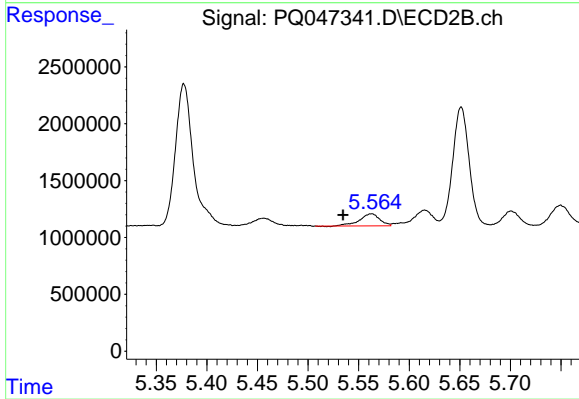
#20 AR-1242-5

R.T.: 6.421 min
 Delta R.T.: 0.008 min
 Response: 20122109
 Conc: 321.37 ng/ml



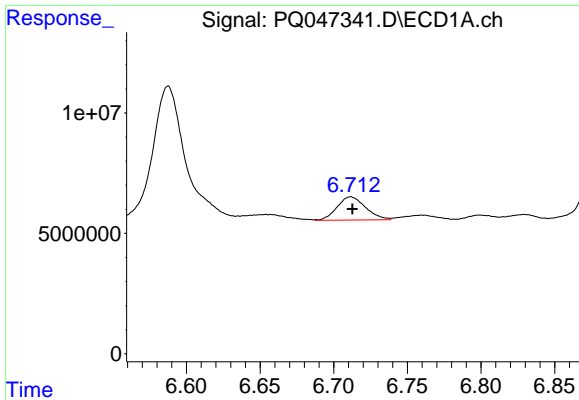
#21 AR-1248-1

R.T.: 6.442 min
 Delta R.T.: 0.025 min
 Response: 7219712
 Conc: 22.64 ng/ml



#21 AR-1248-1

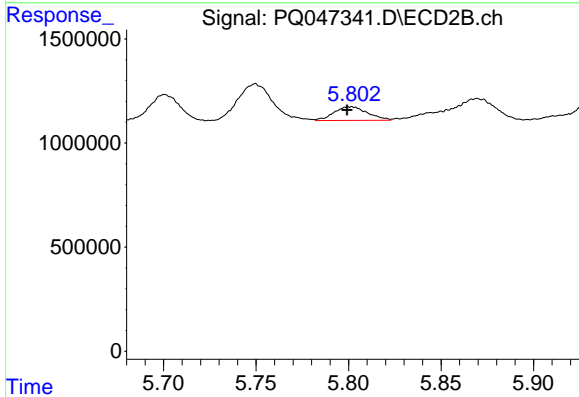
R.T.: 5.563 min
 Delta R.T.: 0.028 min
 Response: 1476830
 Conc: 29.43 ng/ml



#22 AR-1248-2

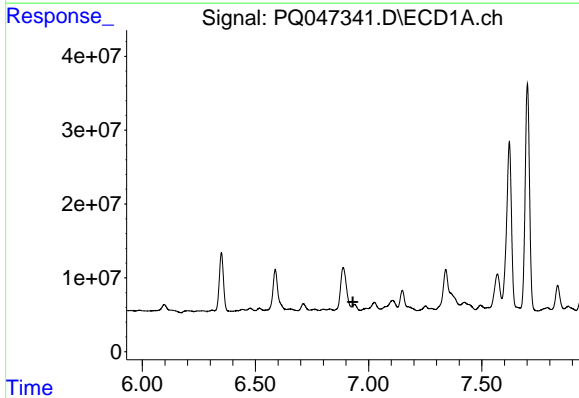
R.T.: 6.712 min
 Delta R.T.: -0.001 min
 Response: 13056749
 Conc: 31.34 ng/ml

Instrument :
 ECD_Q
 ClientSampled :
 S8-09-B



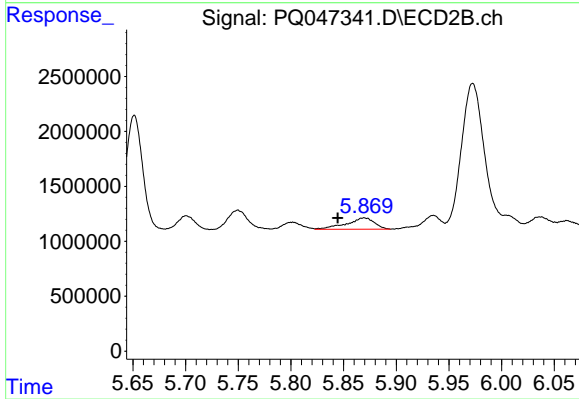
#22 AR-1248-2

R.T.: 5.802 min
 Delta R.T.: 0.002 min
 Response: 829800
 Conc: 13.02 ng/ml



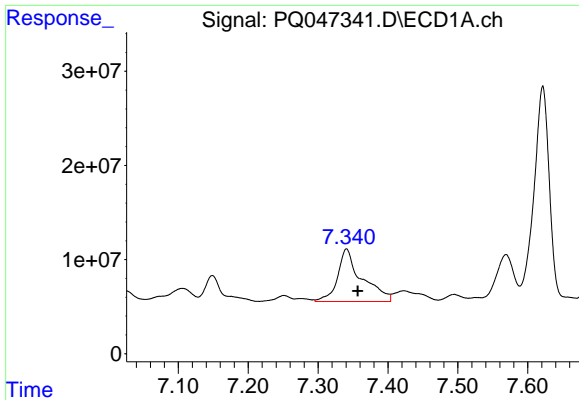
#23 AR-1248-3

R.T.: 6.938 min
 Delta R.T.: 0.007 min
 Response: -2181896
 Conc: N.D.



#23 AR-1248-3

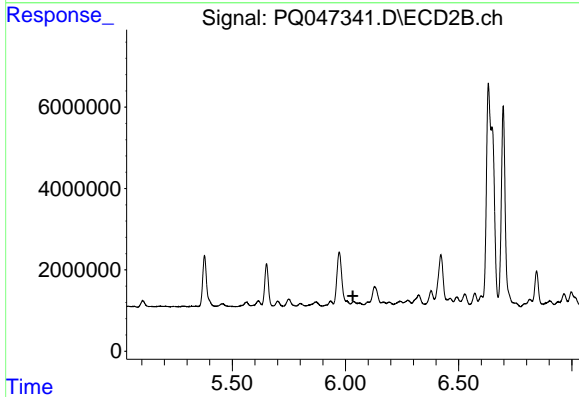
R.T.: 5.869 min
 Delta R.T.: 0.025 min
 Response: 1905979
 Conc: 29.36 ng/ml



#24 AR-1248-4

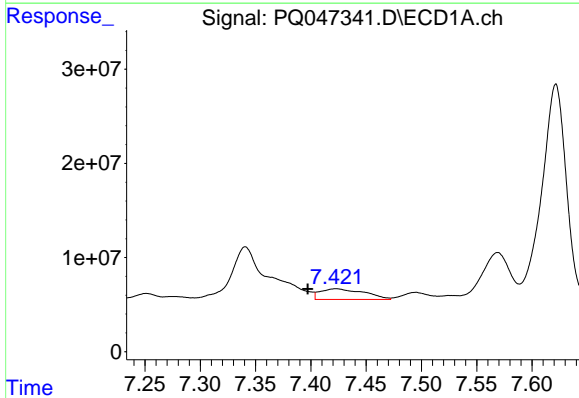
R.T.: 7.341 min
 Delta R.T.: -0.016 min
 Response: 134097629
 Conc: 258.46 ng/ml

Instrument :
 ECD_Q
 ClientSampled :
 S8-09-B



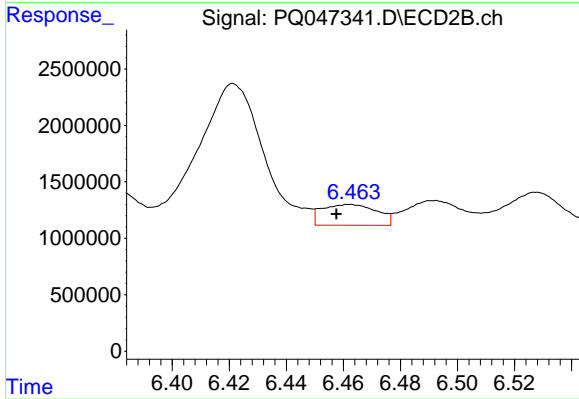
#24 AR-1248-4

R.T.: 6.037 min
 Delta R.T.: 0.004 min
 Response: -117322
 Conc: N.D.



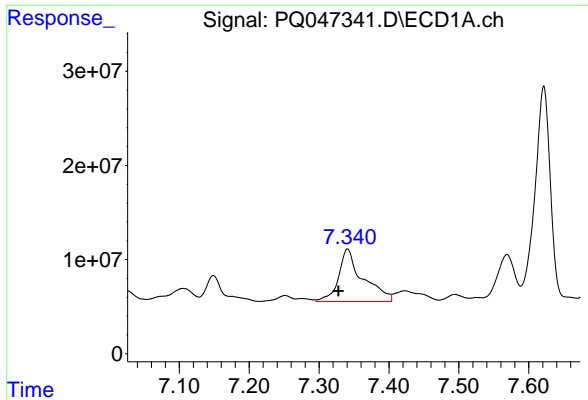
#25 AR-1248-5

R.T.: 7.423 min
 Delta R.T.: 0.026 min
 Response: 31433514
 Conc: 64.49 ng/ml



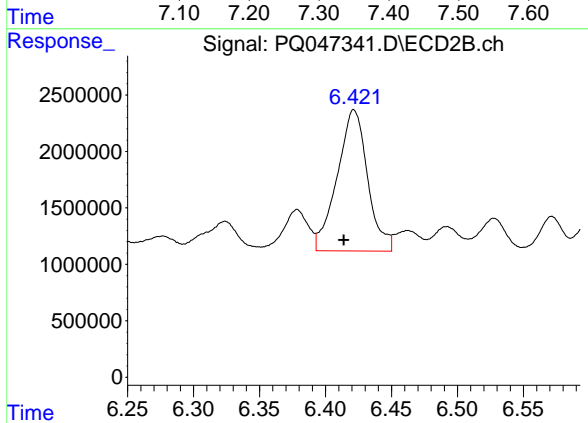
#25 AR-1248-5

R.T.: 6.462 min
 Delta R.T.: 0.005 min
 Response: 2457875
 Conc: 30.17 ng/ml

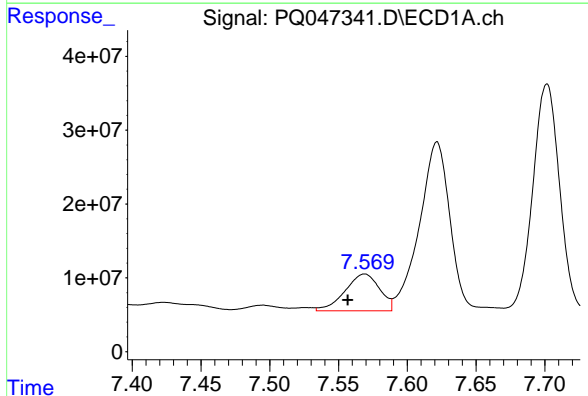


#26 AR-1254-1
 R.T.: 7.341 min
 Delta R.T.: 0.013 min
 Response: 134097629
 Conc: 213.13 ng/ml

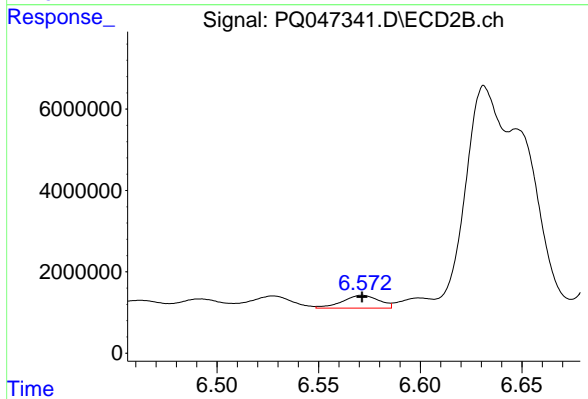
Instrument :
 ECD_Q
 ClientSampled :
 S8-09-B



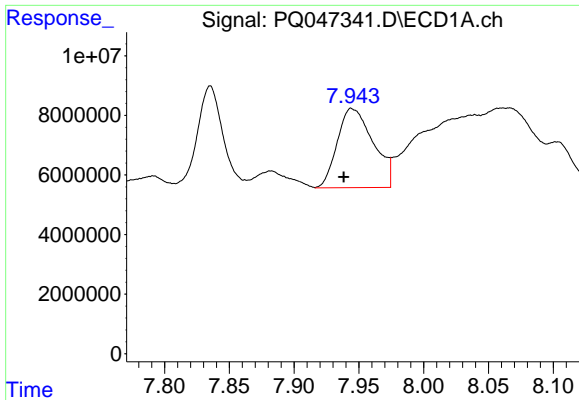
#26 AR-1254-1
 R.T.: 6.421 min
 Delta R.T.: 0.008 min
 Response: 20122109
 Conc: 132.73 ng/ml



#27 AR-1254-2
 R.T.: 7.569 min
 Delta R.T.: 0.012 min
 Response: 87443136
 Conc: 93.02 ng/ml

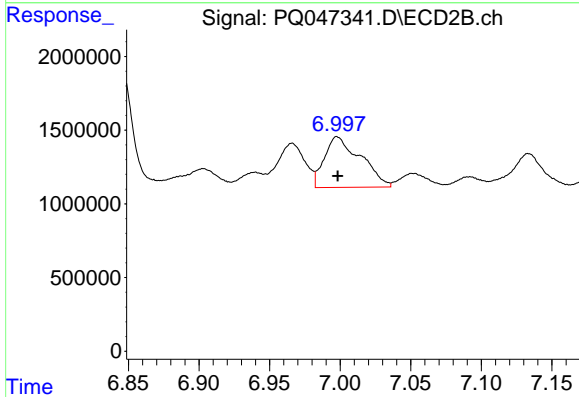


#27 AR-1254-2
 R.T.: 6.571 min
 Delta R.T.: 0.000 min
 Response: 3954536
 Conc: 30.10 ng/ml

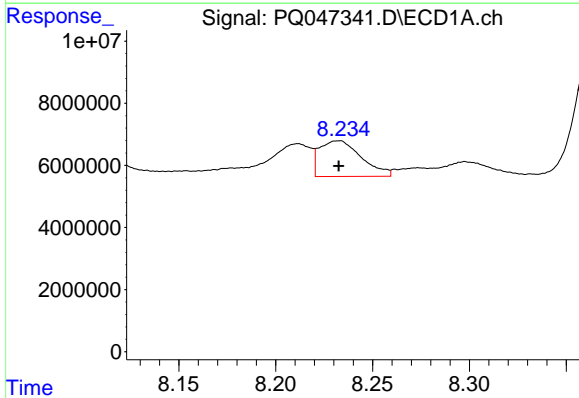


#28 AR-1254-3
 R.T.: 7.944 min
 Delta R.T.: 0.006 min
 Response: 51315826
 Conc: 54.54 ng/ml

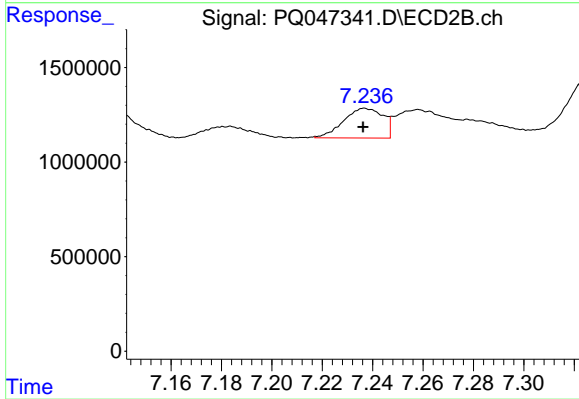
Instrument :
 ECD_Q
ClientSampled :
 S8-09-B



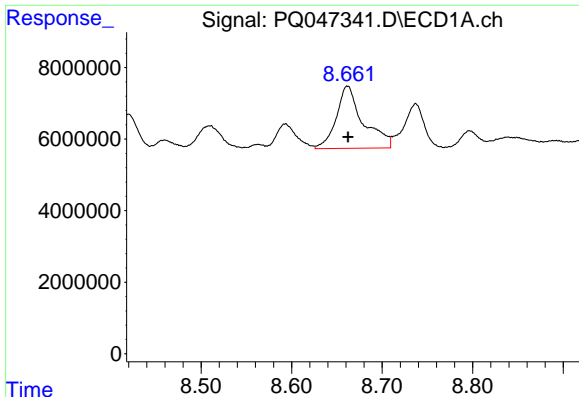
#28 AR-1254-3
 R.T.: 6.998 min
 Delta R.T.: 0.000 min
 Response: 6177685
 Conc: 28.49 ng/ml



#29 AR-1254-4
 R.T.: 8.232 min
 Delta R.T.: 0.000 min
 Response: 17282946
 Conc: 22.95 ng/ml



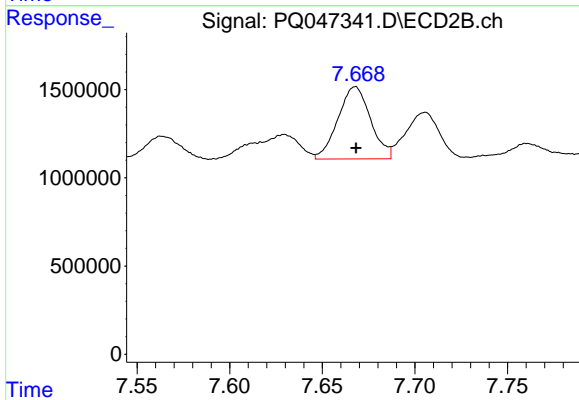
#29 AR-1254-4
 R.T.: 7.237 min
 Delta R.T.: 0.000 min
 Response: 1708586
 Conc: 12.02 ng/ml



#30 AR-1254-5

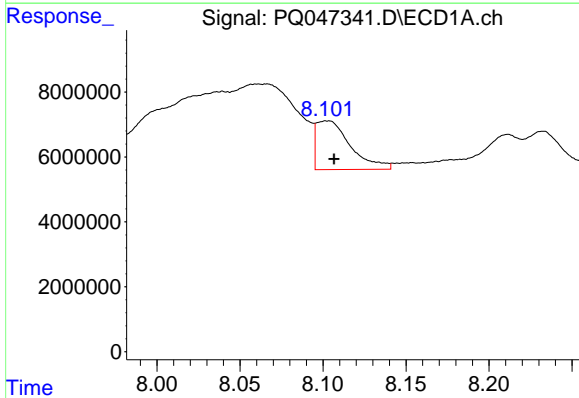
R.T.: 8.662 min
 Delta R.T.: 0.000 min
 Response: 35953246
 Conc: 52.49 ng/ml

Instrument :
 ECD_Q
 ClientSampleId :
 S8-09-B



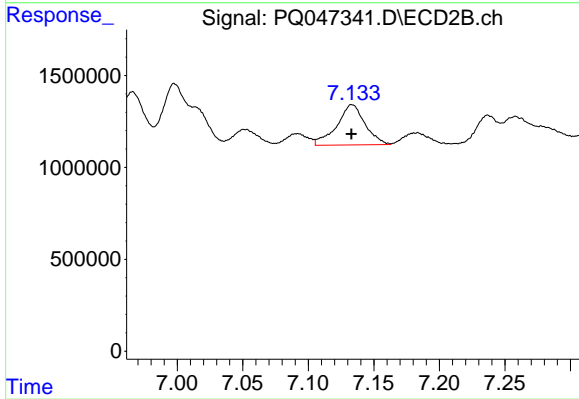
#30 AR-1254-5

R.T.: 7.668 min
 Delta R.T.: 0.000 min
 Response: 5026124
 Conc: 26.30 ng/ml



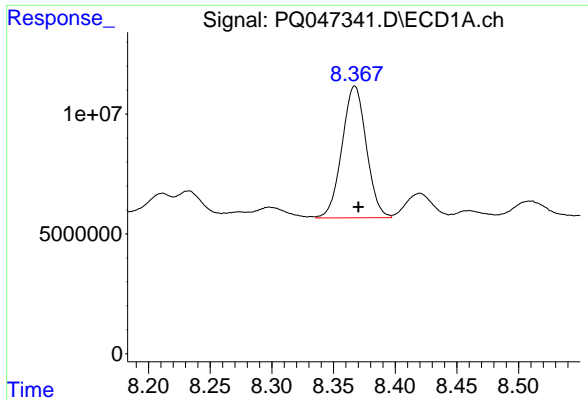
#31 AR-1260-1

R.T.: 8.103 min
 Delta R.T.: -0.004 min
 Response: 21510351
 Conc: 36.13 ng/ml



#31 AR-1260-1

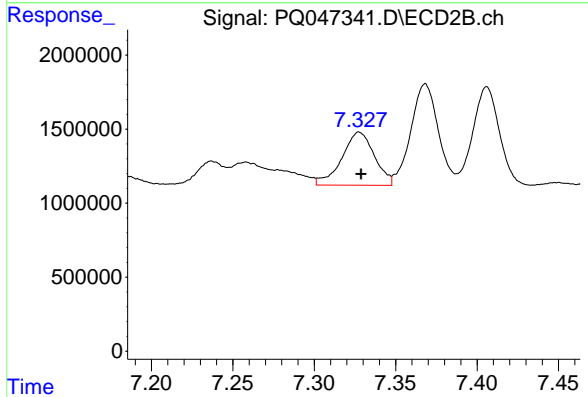
R.T.: 7.133 min
 Delta R.T.: 0.000 min
 Response: 3297406
 Conc: 26.48 ng/ml



#32 AR-1260-2

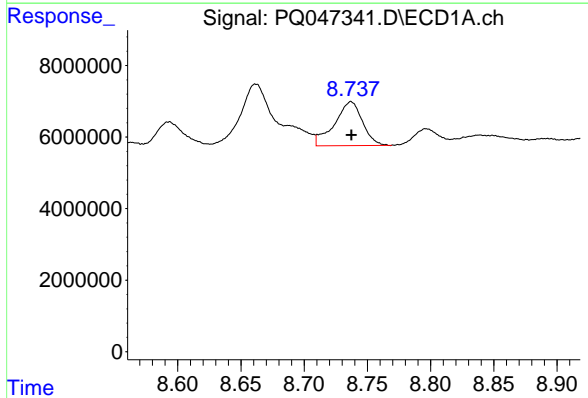
R.T.: 8.367 min
 Delta R.T.: -0.003 min
 Response: 75401804
 Conc: 101.52 ng/ml

Instrument :
 ECD_Q
 ClientSampleId :
 S8-09-B



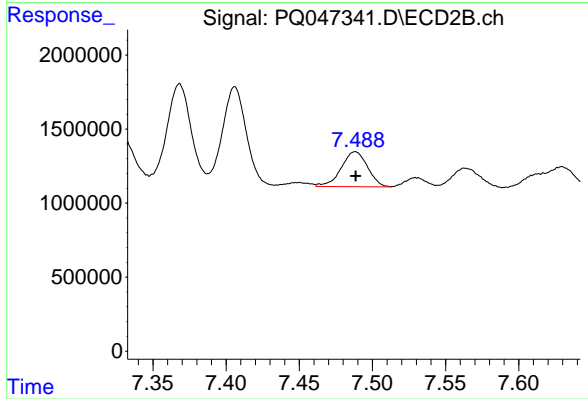
#32 AR-1260-2

R.T.: 7.328 min
 Delta R.T.: -0.001 min
 Response: 4996423
 Conc: 32.13 ng/ml



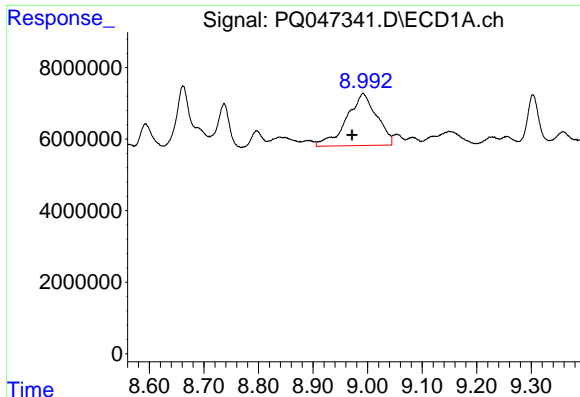
#33 AR-1260-3

R.T.: 8.737 min
 Delta R.T.: 0.000 min
 Response: 18986816
 Conc: 33.18 ng/ml



#33 AR-1260-3

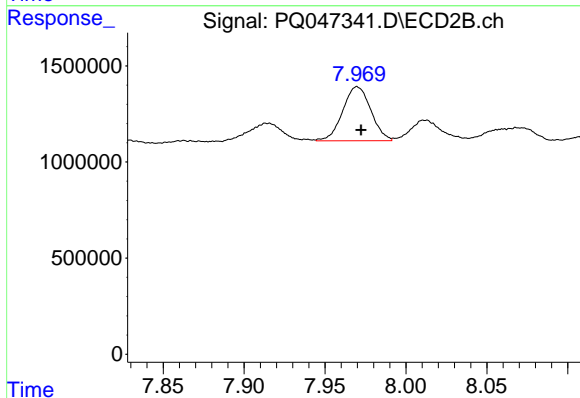
R.T.: 7.488 min
 Delta R.T.: 0.000 min
 Response: 2967050
 Conc: 20.87 ng/ml



#34 AR-1260-4

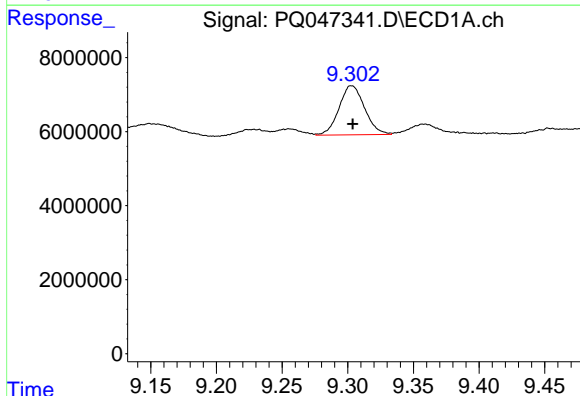
R.T.: 8.992 min
Delta R.T.: 0.020 min
Response: 55712213
Conc: 101.77 ng/ml

Instrument :
ECD_Q
ClientSampled :
S8-09-B



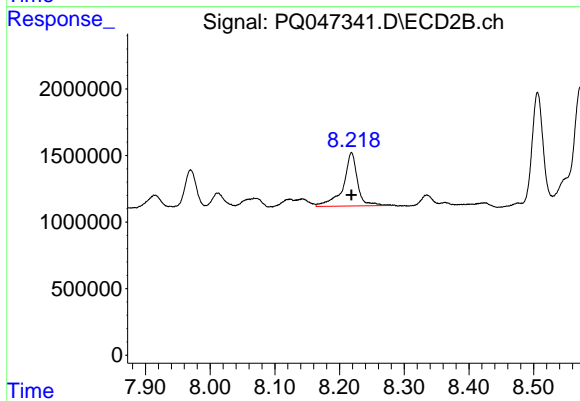
#34 AR-1260-4

R.T.: 7.970 min
Delta R.T.: -0.002 min
Response: 3397834
Conc: 27.95 ng/ml



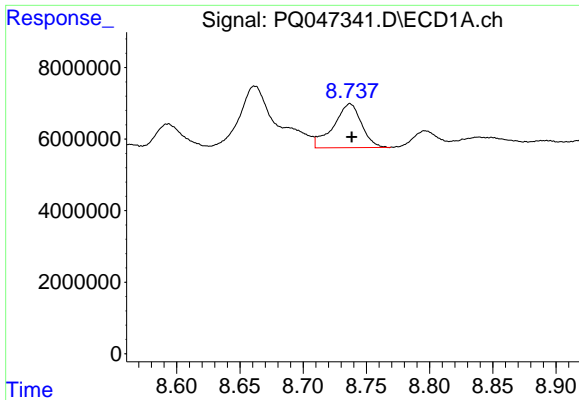
#35 AR-1260-5

R.T.: 9.303 min
Delta R.T.: 0.000 min
Response: 18033940
Conc: 15.83 ng/ml



#35 AR-1260-5

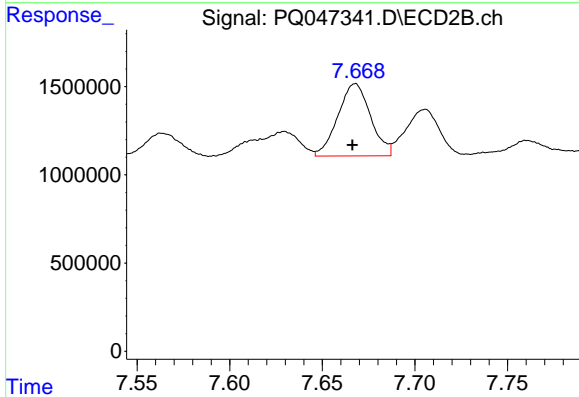
R.T.: 8.219 min
Delta R.T.: 0.000 min
Response: 6128287
Conc: 19.93 ng/ml



#36 AR-1262-1

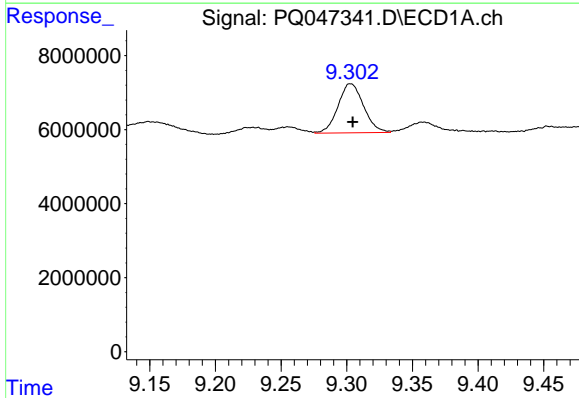
R.T.: 8.737 min
 Delta R.T.: -0.001 min
 Response: 18986816
 Conc: 23.77 ng/ml

Instrument :
 ECD_Q
 ClientSampleId :
 S8-09-B



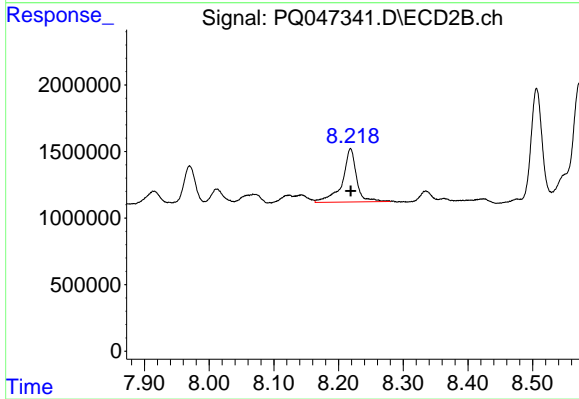
#36 AR-1262-1

R.T.: 7.668 min
 Delta R.T.: 0.002 min
 Response: 5026124
 Conc: 58.10 ng/ml



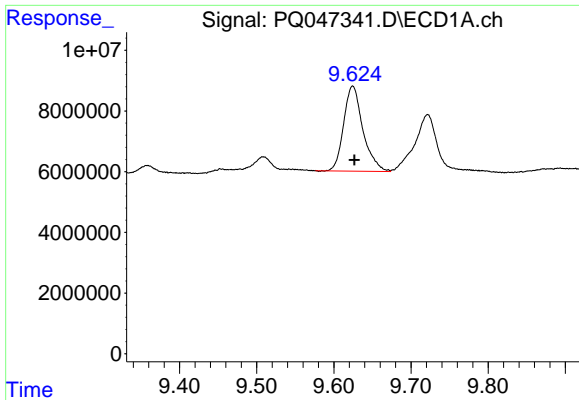
#37 AR-1262-2

R.T.: 9.303 min
 Delta R.T.: -0.002 min
 Response: 18033940
 Conc: 14.63 ng/ml



#37 AR-1262-2

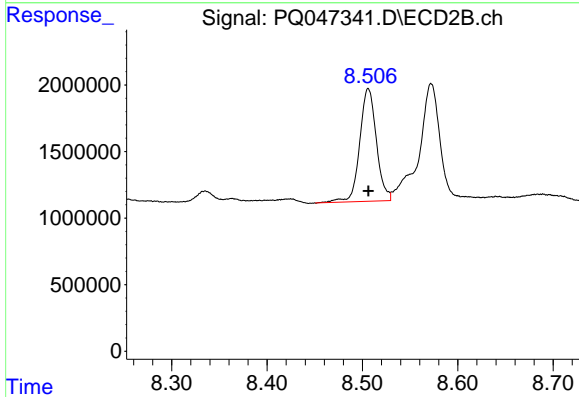
R.T.: 8.219 min
 Delta R.T.: 0.000 min
 Response: 6128287
 Conc: 18.94 ng/ml



#38 AR-1262-3

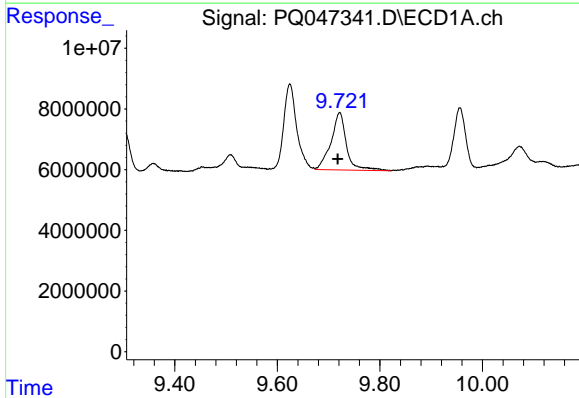
R.T.: 9.624 min
 Delta R.T.: -0.002 min
 Response: 48653874
 Conc: 60.88 ng/ml

Instrument :
 ECD_Q
 ClientSampleId :
 S8-09-B



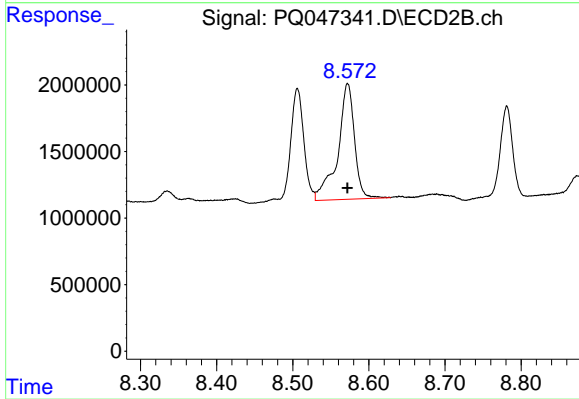
#38 AR-1262-3

R.T.: 8.506 min
 Delta R.T.: 0.000 min
 Response: 10285903
 Conc: 82.48 ng/ml



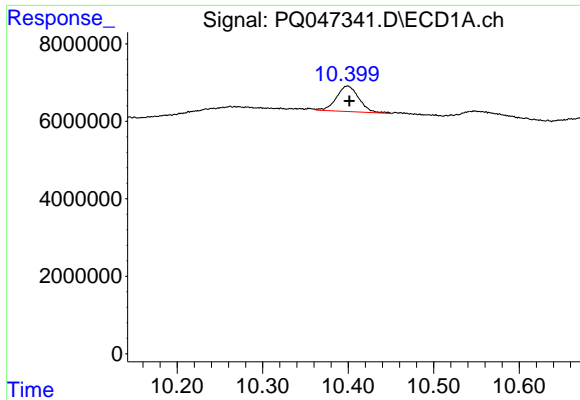
#39 AR-1262-4

R.T.: 9.722 min
 Delta R.T.: 0.004 min
 Response: 39794554
 Conc: 66.44 ng/ml



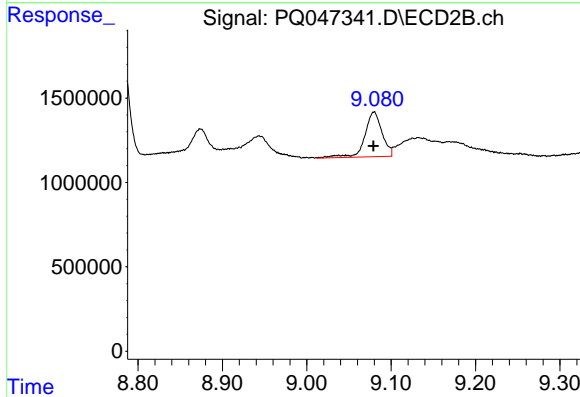
#39 AR-1262-4

R.T.: 8.572 min
 Delta R.T.: 0.000 min
 Response: 13296202
 Conc: 56.33 ng/ml

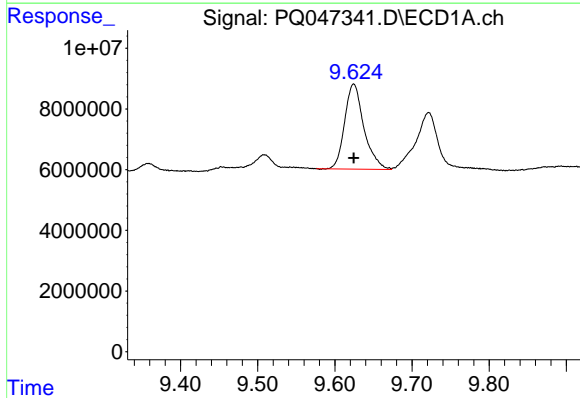


#40 AR-1262-5
 R.T.: 10.399 min
 Delta R.T.: -0.002 min
 Response: 12005493
 Conc: 30.11 ng/ml

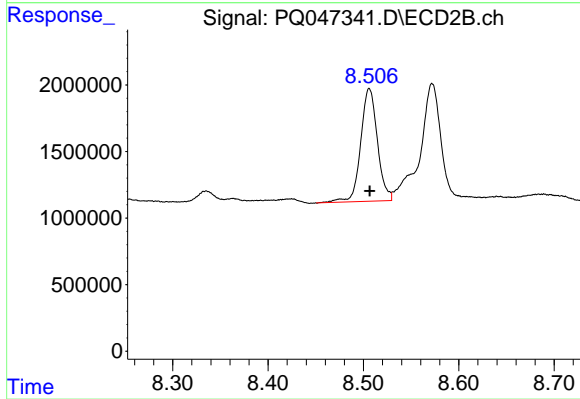
Instrument :
 ECD_Q
 ClientSampled :
 S8-09-B



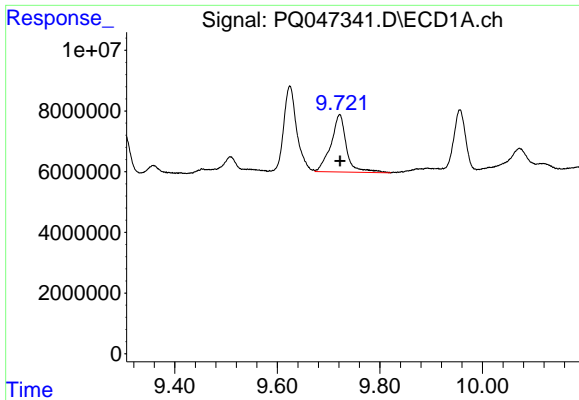
#40 AR-1262-5
 R.T.: 9.080 min
 Delta R.T.: 0.000 min
 Response: 3761070
 Conc: 33.69 ng/ml



#41 AR-1268-1
 R.T.: 9.624 min
 Delta R.T.: 0.000 min
 Response: 48653874
 Conc: 32.35 ng/ml

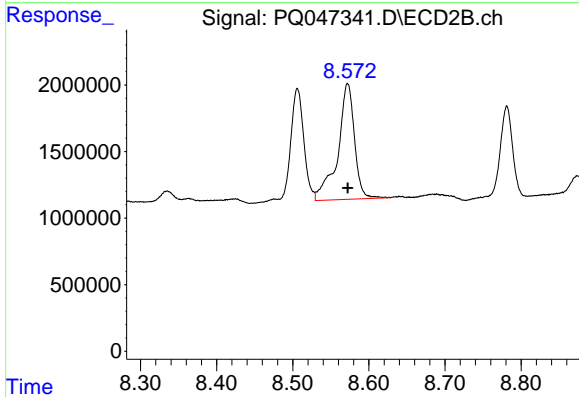


#41 AR-1268-1
 R.T.: 8.506 min
 Delta R.T.: 0.000 min
 Response: 10285903
 Conc: 25.97 ng/ml

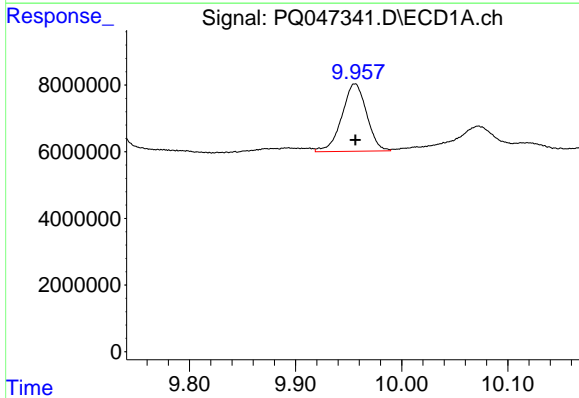


#42 AR-1268-2
 R.T.: 9.722 min
 Delta R.T.: 0.000 min
 Response: 39794554
 Conc: 30.66 ng/ml

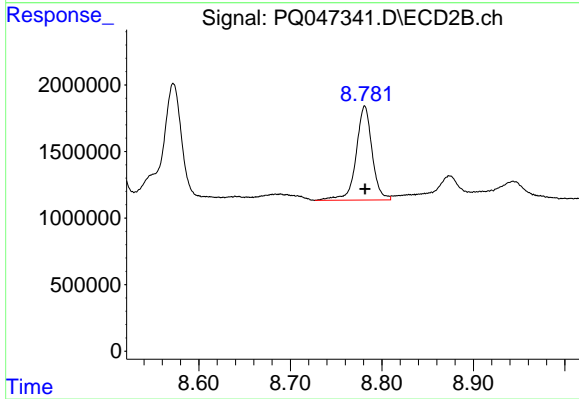
Instrument :
 ECD_Q
 ClientSampled :
 S8-09-B



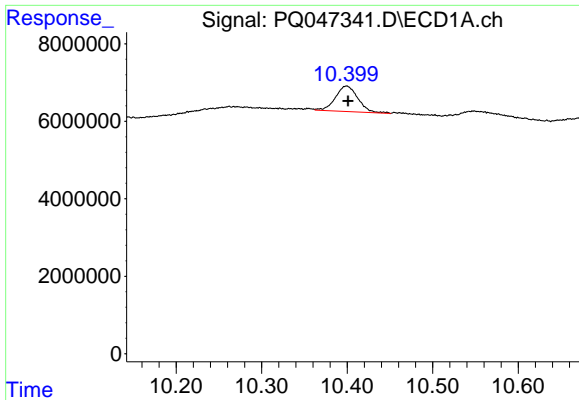
#42 AR-1268-2
 R.T.: 8.572 min
 Delta R.T.: 0.000 min
 Response: 13296202
 Conc: 36.23 ng/ml



#43 AR-1268-3
 R.T.: 9.956 min
 Delta R.T.: 0.000 min
 Response: 32886398
 Conc: 30.23 ng/ml

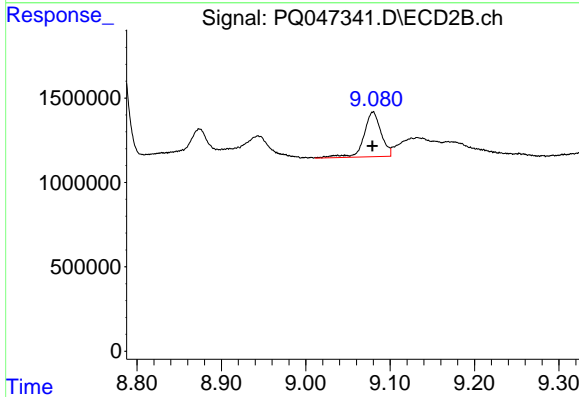


#43 AR-1268-3
 R.T.: 8.781 min
 Delta R.T.: 0.000 min
 Response: 8579562
 Conc: 28.42 ng/ml

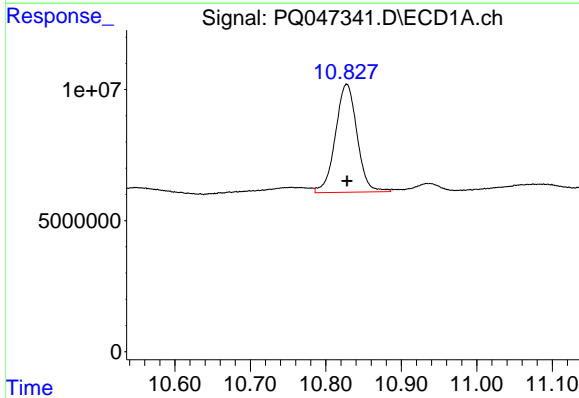


#44 AR-1268-4
 R.T.: 10.399 min
 Delta R.T.: -0.002 min
 Response: 12005493
 Conc: 25.39 ng/ml

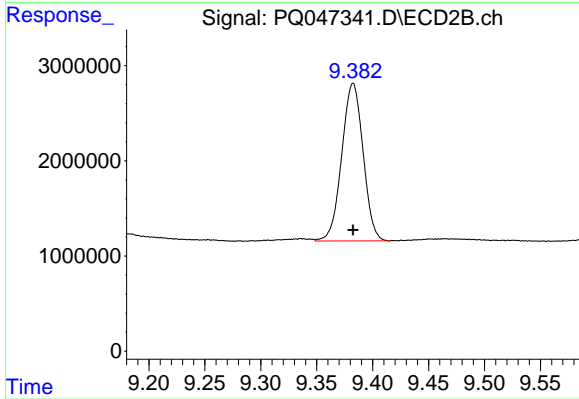
Instrument :
 ECD_Q
 ClientSampled :
 S8-09-B



#44 AR-1268-4
 R.T.: 9.080 min
 Delta R.T.: 0.000 min
 Response: 3761070
 Conc: 28.62 ng/ml



#45 AR-1268-5
 R.T.: 10.828 min
 Delta R.T.: 0.000 min
 Response: 81903120
 Conc: 27.42 ng/ml



#45 AR-1268-5
 R.T.: 9.383 min
 Delta R.T.: 0.000 min
 Response: 22009614
 Conc: 21.84 ng/ml