

Data Path : Z:\pestpcbsrv\HPCHEM1\ECD_Q\Data\PQ042720\
 Data File : PQ047577.D
 Signal(s) : Signal #1: ECD1A.ch Signal #2: ECD2B.ch
 Acq On : 27 Apr 2020 15:37
 Operator : AJ\MA
 Sample : L2382-12 5X
 Misc :
 ALS Vial : 23 Sample Multiplier: 1

Instrument :
 ECD_Q
ClientSampled :
 19972

Manual Integrations
APPROVED
 Sohil
 4/28/2020 3:44:25 PM

Integration File signal 1: autoint1.e
 Integration File signal 2: autoint2.e
 Quant Time: Apr 27 15:58:37 2020
 Quant Method : Z:\pestpcbsrv\HPCHEM1\ECD_Q\Method\PQ041620.M
 Quant Title : GC EXTRACTABLES
 QLast Update : Fri Apr 17 08:20:56 2020
 Response via : Initial Calibration
 Integrator: ChemStation

Volume Inj. : 2 µl
 Signal #1 Phase : ZB-MR1 Signal #2 Phase: ZB-MR2
 Signal #1 Info : 30Mx0.32mmx 0.50µ Signal #2 Info : 30M x 0.32mm x 0.25µm

Compound	RT#1	RT#2	Resp#1	Resp#2	ng/ml	ng/ml

System Monitoring Compounds						
1) SA Tetrachlo...	5.111	4.270	31977666	8993479	1.740	3.022m#
2) SA Decachlor...	11.182	9.646	76838881	9806330	3.599	3.137

Target Compounds

(f)=RT Delta > 1/2 Window (#)=Amounts differ by > 25% (m)=manual int.

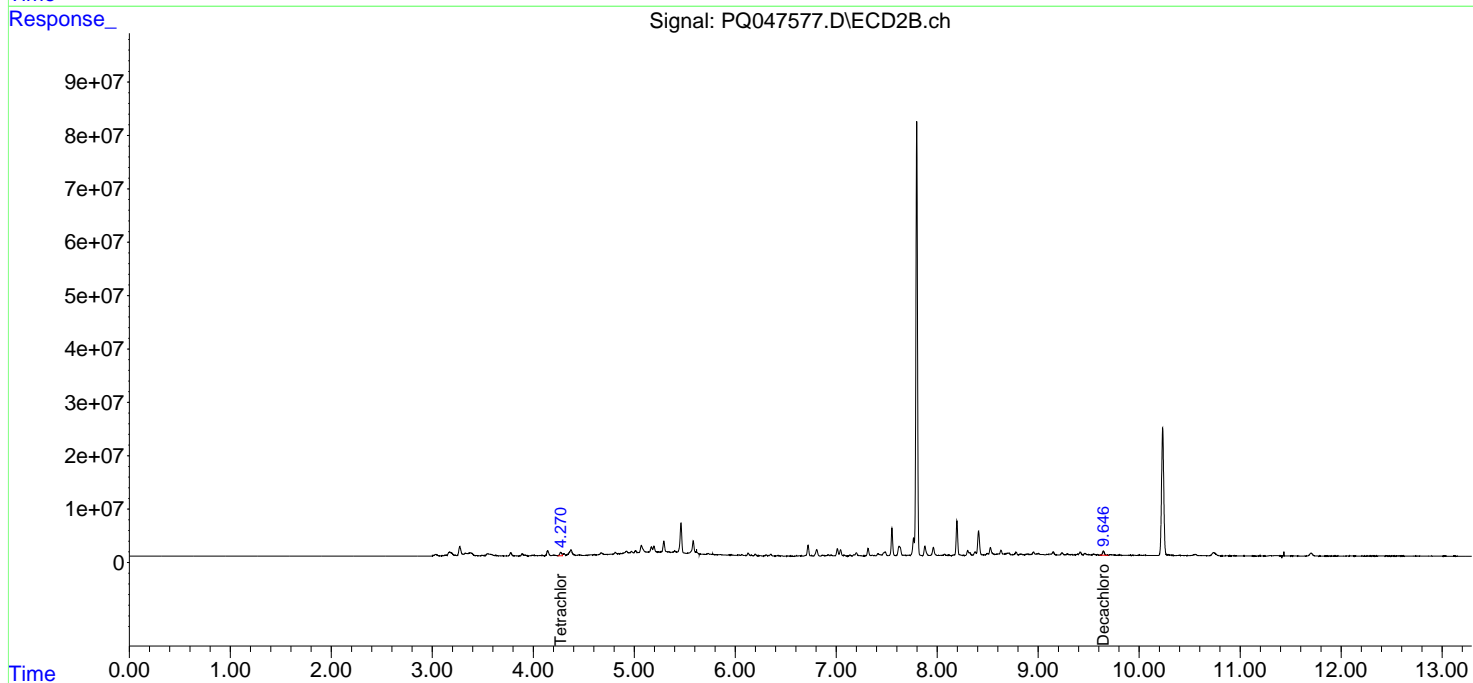
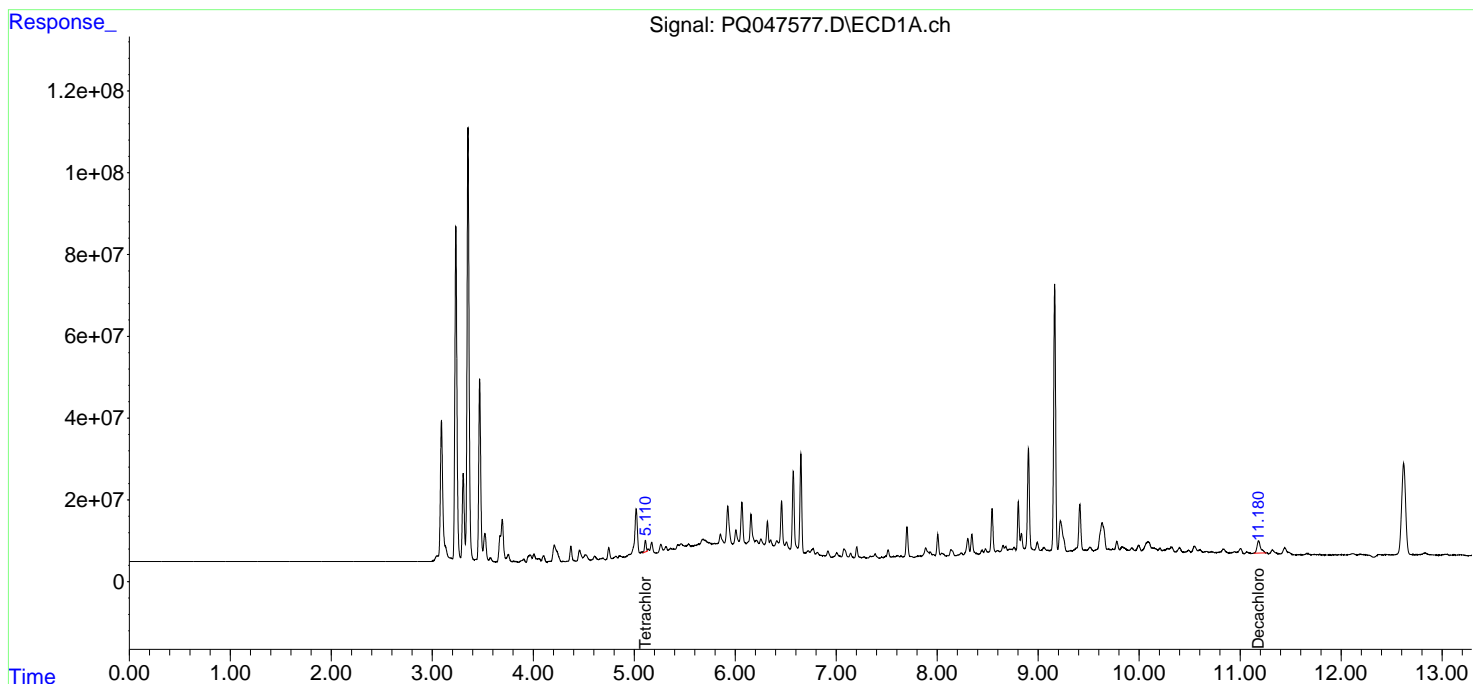
Data Path : Z:\pestpcbsrv\HPCHEM1\ECD_Q\Data\PQ042720\
 Data File : PQ047577.D
 Signal(s) : Signal #1: ECD1A.ch Signal #2: ECD2B.ch
 Acq On : 27 Apr 2020 15:37
 Operator : AJ\MA
 Sample : L2382-12 5X
 Misc :
 ALS Vial : 23 Sample Multiplier: 1

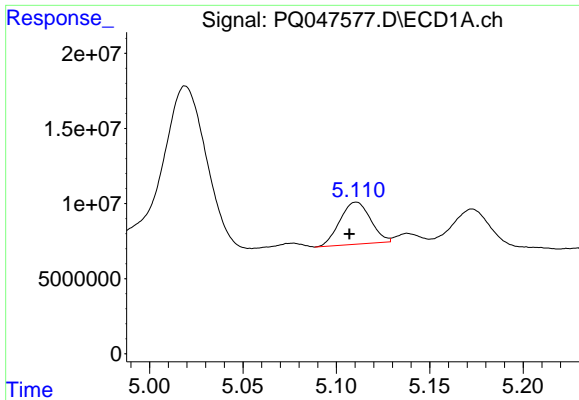
Instrument :
 ECD_Q
Client Sampled :
 19972

Manual Integrations
APPROVED
 Sohil
 4/28/2020 3:44:25 PM

Integration File signal 1: autoint1.e
 Integration File signal 2: autoint2.e
 Quant Time: Apr 27 15:58:37 2020
 Quant Method : Z:\pestpcbsrv\HPCHEM1\ECD_Q\Method\PQ041620.M
 Quant Title : GC EXTRACTABLES
 QLast Update : Fri Apr 17 08:20:56 2020
 Response via : Initial Calibration
 Integrator: ChemStation

Volume Inj. : 2 µl
 Signal #1 Phase : ZB-MR1 Signal #2 Phase: ZB-MR2
 Signal #1 Info : 30Mx0.32mmx 0.50µ Signal #2 Info : 30M x 0.32mm x 0.25µm

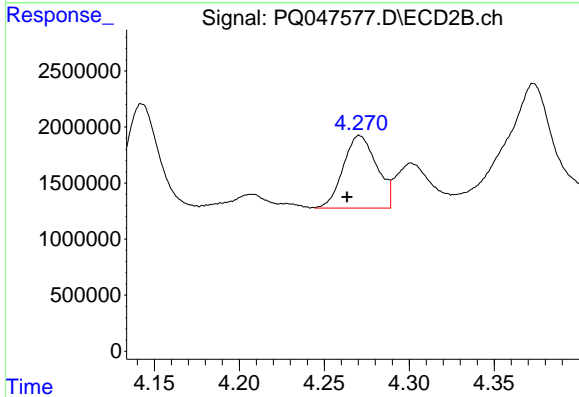




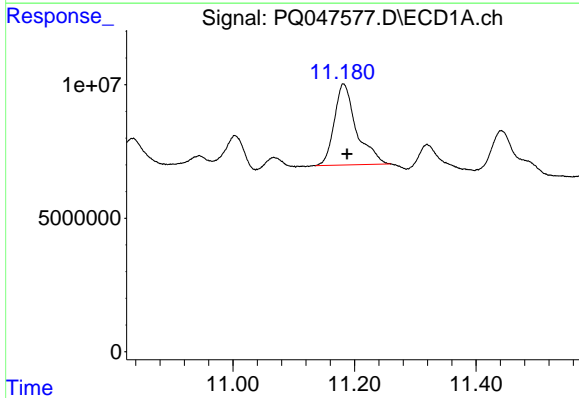
#1 Tetrachloro-m-xylene
 R.T.: 5.111 min
 Delta R.T.: 0.004 min
 Response: 31977666
 Conc: 1.74 ng/ml

Instrument :
 ECD_Q
 ClientSampled :
 19972

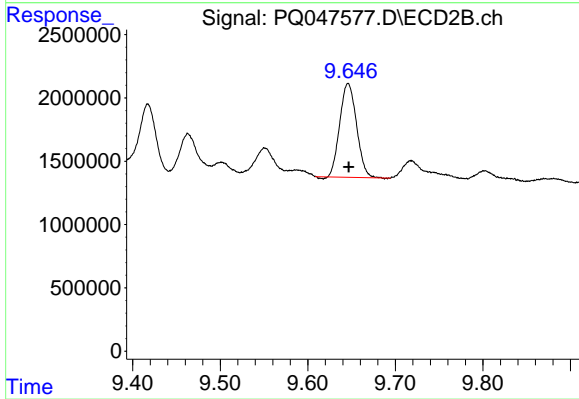
Manual Integrations
 APPROVED
 Sohil
 4/28/2020 3:44:25 PM



#1 Tetrachloro-m-xylene
 R.T.: 4.270 min
 Delta R.T.: 0.007 min
 Response: 8993479
 Conc: 3.02 ng/ml m



#2 Decachlorobiphenyl
 R.T.: 11.182 min
 Delta R.T.: -0.006 min
 Response: 76838881
 Conc: 3.60 ng/ml



#2 Decachlorobiphenyl
 R.T.: 9.646 min
 Delta R.T.: 0.000 min
 Response: 9806330
 Conc: 3.14 ng/ml