

Data Path : Z:\pestpcbsrv\HPCHEM1\ECD_Q\Data\PQ042820\
 Data File : PQ047603.D
 Signal(s) : Signal #1: ECD1A.ch Signal #2: ECD2B.ch
 Acq On : 28 Apr 2020 15:13
 Operator : AJ\MA
 Sample : L2417-02
 Misc :
 ALS Vial : 22 Sample Multiplier: 1

Instrument :
 ECD_Q
 ClientSampleId :
 HW-54

Integration File signal 1: autoint1.e
 Integration File signal 2: autoint2.e
 Quant Time: Apr 28 16:05:05 2020
 Quant Method : Z:\pestpcbsrv\HPCHEM1\ECD_Q\Method\PQ041620.M
 Quant Title : GC EXTRACTABLES
 QLast Update : Fri Apr 17 08:20:56 2020
 Response via : Initial Calibration
 Integrator: ChemStation

Volume Inj. : 2 µl
 Signal #1 Phase : ZB-MR1 Signal #2 Phase: ZB-MR2
 Signal #1 Info : 30Mx0.32mmx 0.50µ Signal #2 Info : 30M x 0.32mm x 0.25µm

Compound	RT#1	RT#2	Resp#1	Resp#2	ng/ml	ng/ml

System Monitoring Compounds						
1) SA Tetrachlo...	5.108	4.265	325.5E6	57247402	17.711	19.236
2) SA Decachlor...	11.177	9.642	321.4E6	49783611	15.056	15.924

Target Compounds

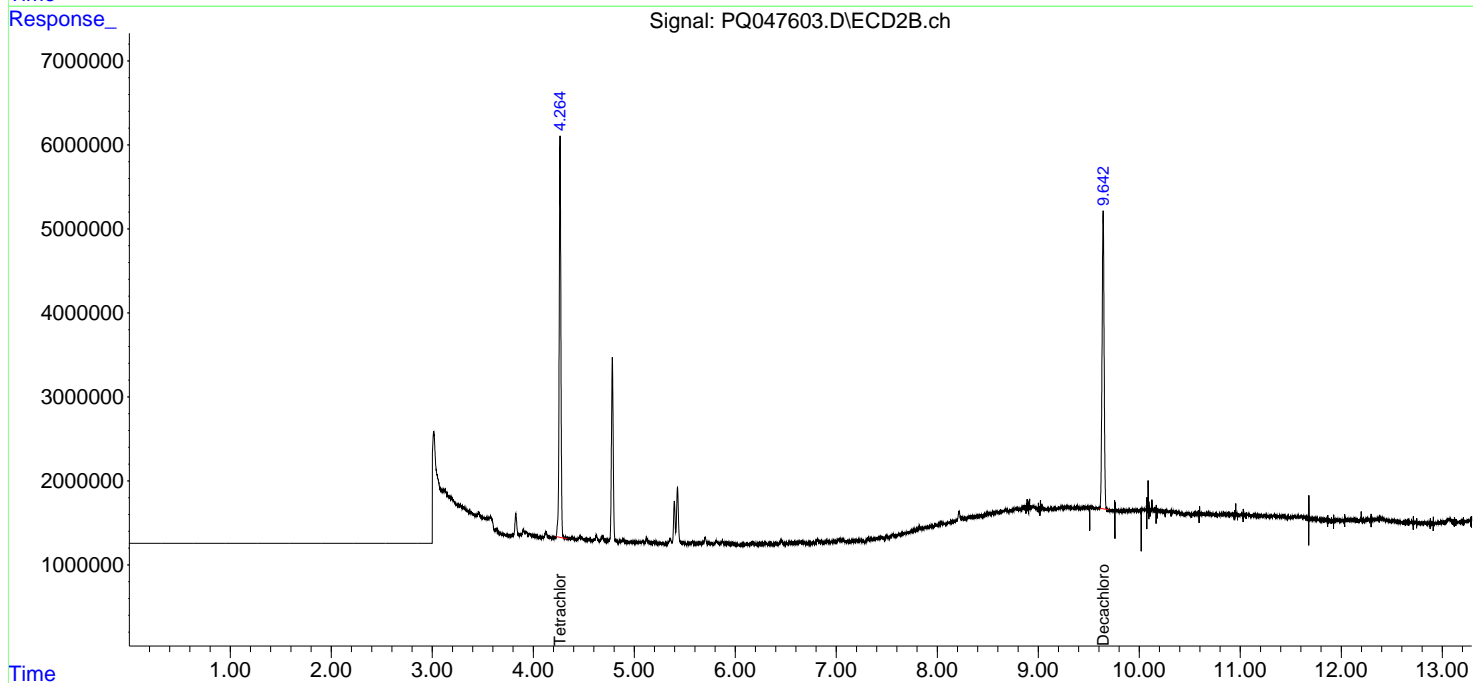
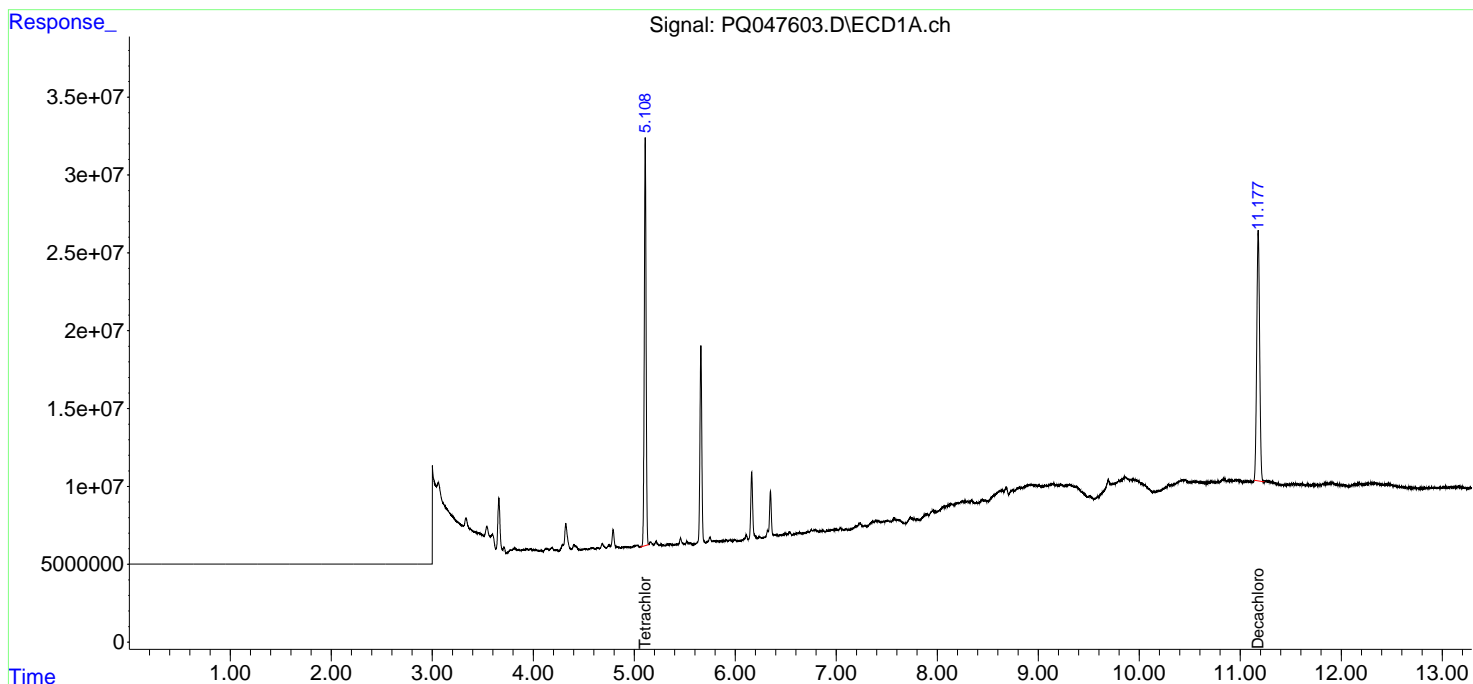
(f)=RT Delta > 1/2 Window (#)=Amounts differ by > 25% (m)=manual int.

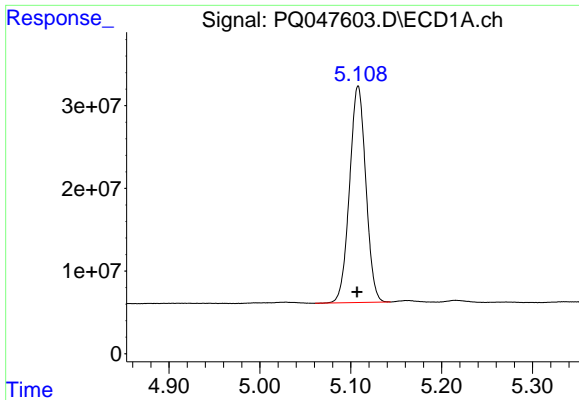
Data Path : Z:\pestpcbsrv\HPCHEM1\ECD_Q\Data\PQ042820\
 Data File : PQ047603.D
 Signal(s) : Signal #1: ECD1A.ch Signal #2: ECD2B.ch
 Acq On : 28 Apr 2020 15:13
 Operator : AJ\MA
 Sample : L2417-02
 Misc :
 ALS Vial : 22 Sample Multiplier: 1

Instrument :
 ECD_Q
 ClientSampled :
 HW-54

Integration File signal 1: autoint1.e
 Integration File signal 2: autoint2.e
 Quant Time: Apr 28 16:05:05 2020
 Quant Method : Z:\pestpcbsrv\HPCHEM1\ECD_Q\Method\PQ041620.M
 Quant Title : GC EXTRACTABLES
 QLast Update : Fri Apr 17 08:20:56 2020
 Response via : Initial Calibration
 Integrator: ChemStation

Volume Inj. : 2 µl
 Signal #1 Phase : ZB-MR1 Signal #2 Phase: ZB-MR2
 Signal #1 Info : 30Mx0.32mmx 0.50µ Signal #2 Info : 30M x 0.32mm x 0.25µm

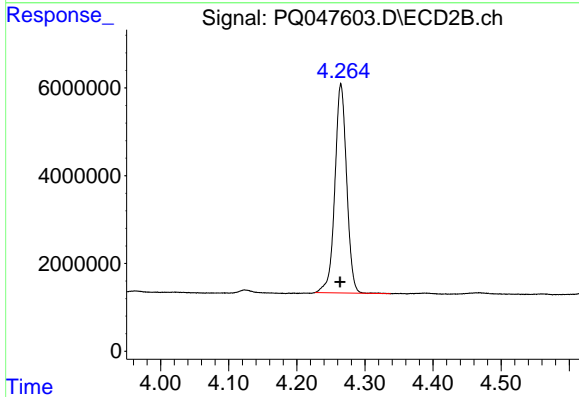




#1 Tetrachloro-m-xylene

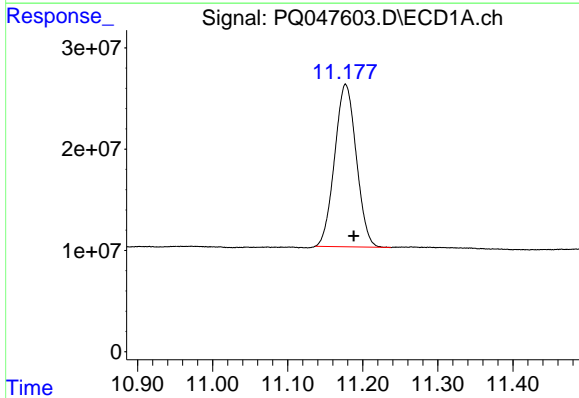
R.T.: 5.108 min
 Delta R.T.: 0.001 min
 Response: 325529851
 Conc: 17.71 ng/ml

Instrument :
 ECD_Q
 ClientSampled :
 HW-54



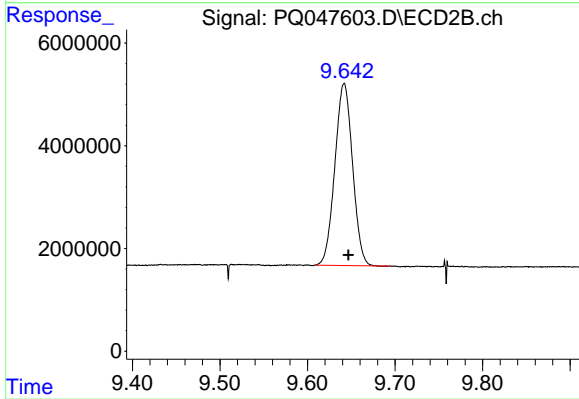
#1 Tetrachloro-m-xylene

R.T.: 4.265 min
 Delta R.T.: 0.001 min
 Response: 57247402
 Conc: 19.24 ng/ml



#2 Decachlorobiphenyl

R.T.: 11.177 min
 Delta R.T.: -0.011 min
 Response: 321411751
 Conc: 15.06 ng/ml



#2 Decachlorobiphenyl

R.T.: 9.642 min
 Delta R.T.: -0.005 min
 Response: 49783611
 Conc: 15.92 ng/ml