

Data Path : Z:\pestpcbsrv\HPCHEM1\ECD_Q\Data\PQ050520\
 Data File : PQ047635.D
 Signal(s) : Signal #1: ECD1A.ch Signal #2: ECD2B.ch
 Acq On : 06 May 2020 02:16
 Operator : AJ\MA
 Sample : AR1221CCC500
 Misc :
 ALS Vial : 10 Sample Multiplier: 1

Instrument :
 ECD_Q
ClientSampleId :
 AR1221CCC500

Manual Integrations
APPROVED

Sohil
 5/7/2020 1:16:30 PM

Integration File signal 1: autoint1.e
 Integration File signal 2: autoint2.e
 Quant Time: May 06 06:45:17 2020
 Quant Method : Z:\pestpcbsrv\HPCHEM1\ECD_Q\Method\PQ050520.M
 Quant Title : GC EXTRACTABLES
 QLast Update : Wed May 06 06:35:12 2020
 Response via : Initial Calibration
 Integrator: ChemStation

Volume Inj. : 2 µl
 Signal #1 Phase : ZB-MR1 Signal #2 Phase: ZB-MR2
 Signal #1 Info : 30Mx0.32mmx 0.50µ Signal #2 Info : 30M x 0.32mm x 0.25µm

Compound	RT#1	RT#2	Resp#1	Resp#2	ng/ml	ng/ml

System Monitoring Compounds						
1) SA Tetrachlo...	5.103	4.259	969.7E6	164.6E6	50.530	50.009
2) SA Decachlor...	11.174	9.641	1163.8E6	175.8E6	53.515	53.898
Target Compounds						
8) L2 AR-1221-1	5.348	4.520	116.5E6	19136420	551.211m	556.968
9) L2 AR-1221-2	5.448	4.623	86196937	14345814	535.882	537.107
10) L2 AR-1221-3	5.534	4.712	264.5E6	45328645	542.361	555.701

(f)=RT Delta > 1/2 Window (#)=Amounts differ by > 25% (m)=manual int.

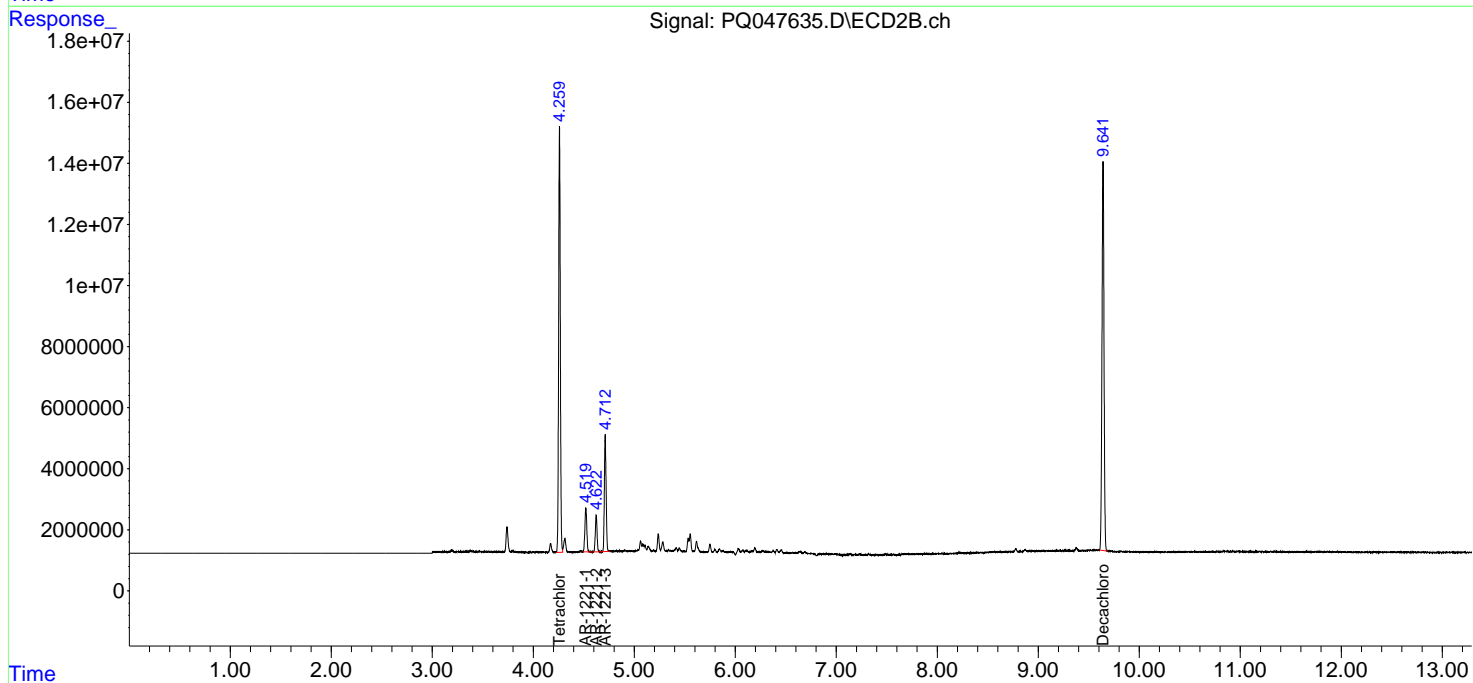
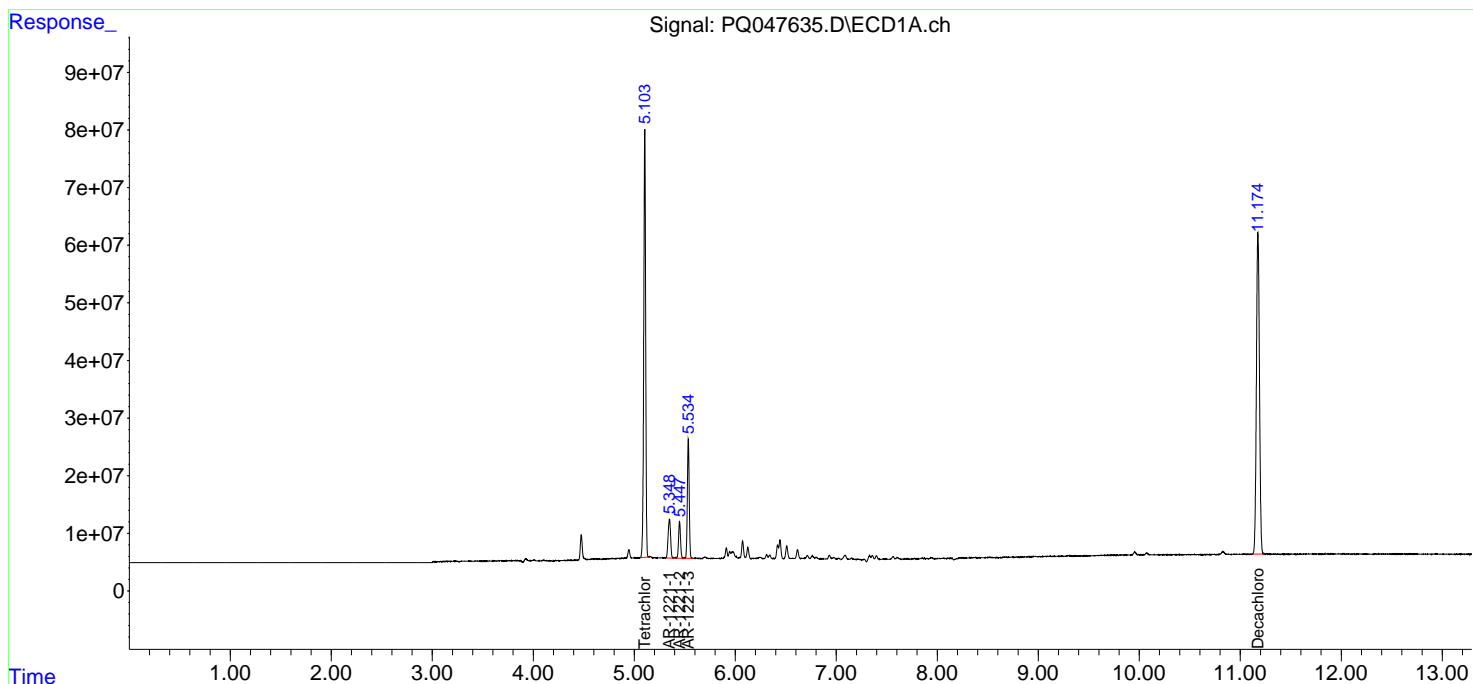
Data Path : Z:\pestpcbsrv\HPCHEM1\ECD_Q\Data\PQ050520\
 Data File : PQ047635.D
 Signal(s) : Signal #1: ECD1A.ch Signal #2: ECD2B.ch
 Acq On : 06 May 2020 02:16
 Operator : AJ\MA
 Sample : AR1221CCC500
 Misc :
 ALS Vial : 10 Sample Multiplier: 1

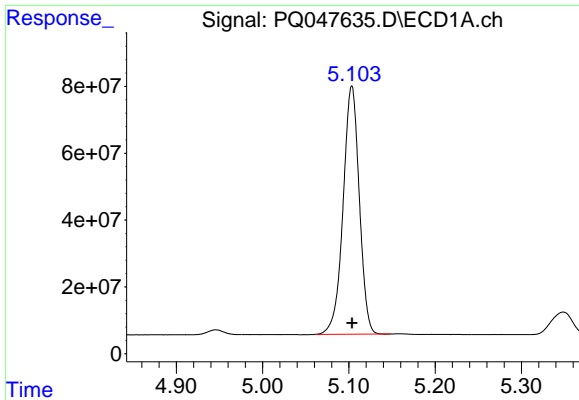
Instrument :
 ECD_Q
ClientSampled :
 AR1221CCC500

Manual Integrations
APPROVED
 Sohil
 5/7/2020 1:16:30 PM

Integration File signal 1: autoint1.e
 Integration File signal 2: autoint2.e
 Quant Time: May 06 06:45:17 2020
 Quant Method : Z:\pestpcbsrv\HPCHEM1\ECD_Q\Method\PQ050520.M
 Quant Title : GC EXTRACTABLES
 QLast Update : Wed May 06 06:35:12 2020
 Response via : Initial Calibration
 Integrator: ChemStation

Volume Inj. : 2 µl
 Signal #1 Phase : ZB-MR1 Signal #2 Phase: ZB-MR2
 Signal #1 Info : 30Mx0.32mmx 0.50µ Signal #2 Info : 30M x 0.32mm x 0.25µm

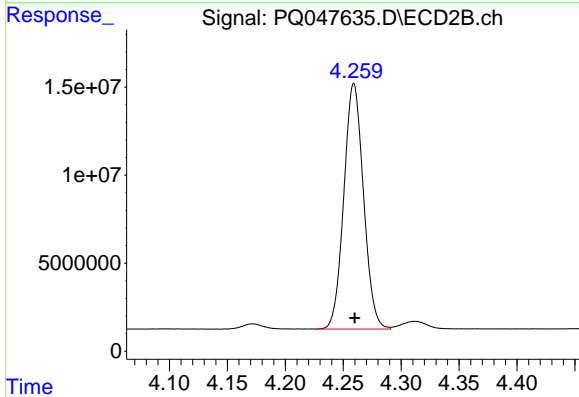




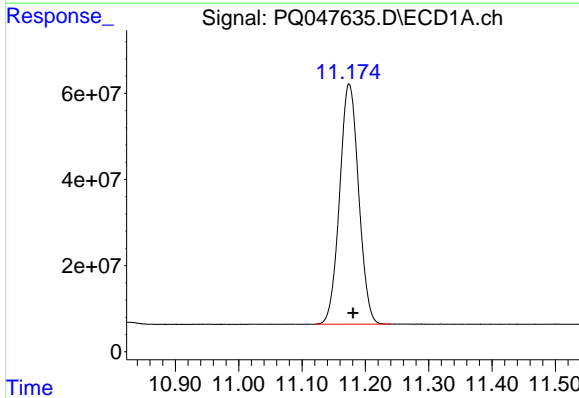
#1 Tetrachloro-m-xylene
 R.T.: 5.103 min
 Delta R.T.: 0.000 min
 Response: 969707096
 Conc: 50.53 ng/ml

Instrument :
 ECD_Q
 ClientSampleId :
 AR1221CCC500

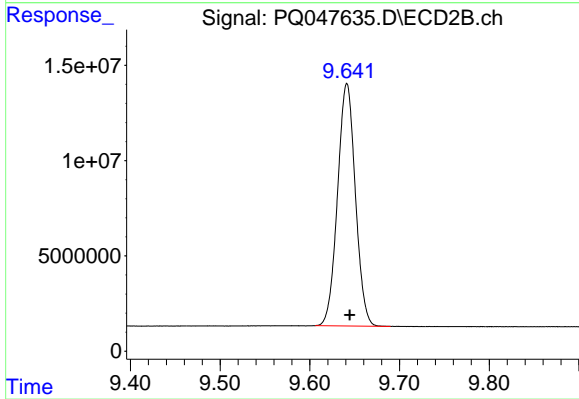
Manual Integrations
 APPROVED
 Sohil
 5/7/2020 1:16:30 PM



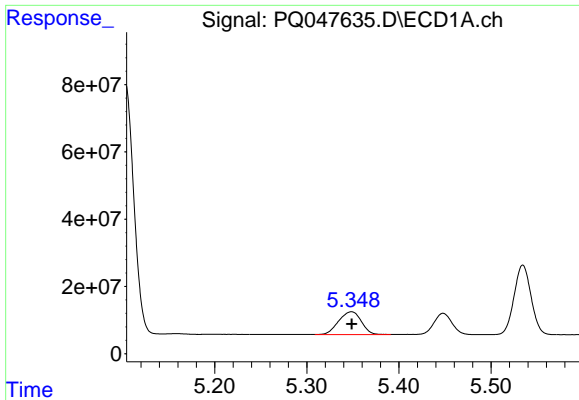
#1 Tetrachloro-m-xylene
 R.T.: 4.259 min
 Delta R.T.: 0.000 min
 Response: 164621043
 Conc: 50.01 ng/ml



#2 Decachlorobiphenyl
 R.T.: 11.174 min
 Delta R.T.: -0.006 min
 Response: 1163839298
 Conc: 53.51 ng/ml



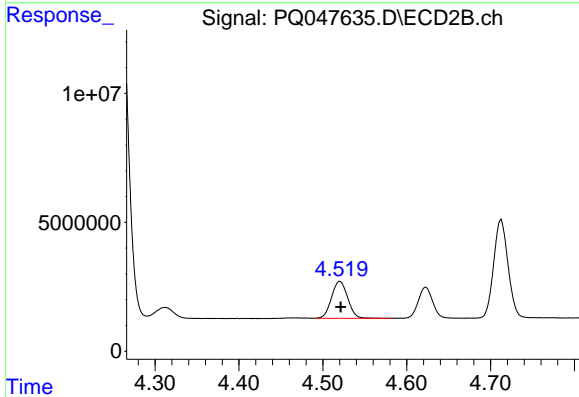
#2 Decachlorobiphenyl
 R.T.: 9.641 min
 Delta R.T.: -0.003 min
 Response: 175812750
 Conc: 53.90 ng/ml



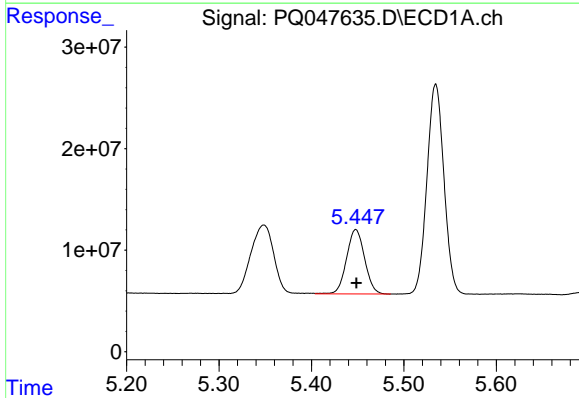
#8 AR-1221-1
 R.T.: 5.348 min
 Delta R.T.: -0.001 min
 Response: 116538868
 Conc: 551.21 ng/ml m

Instrument :
 ECD_Q
 ClientSampleId :
 AR1221CCC500

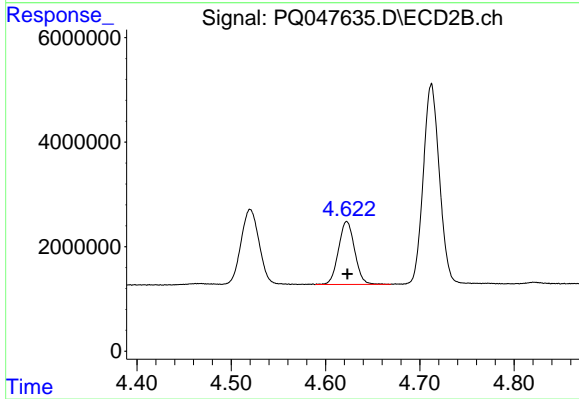
Manual Integrations
 APPROVED
 Sohil
 5/7/2020 1:16:30 PM



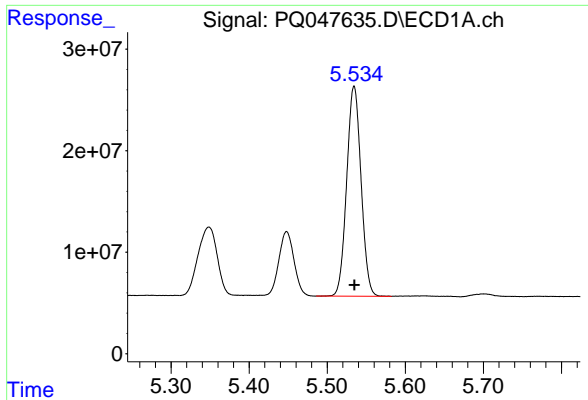
#8 AR-1221-1
 R.T.: 4.520 min
 Delta R.T.: -0.001 min
 Response: 19136420
 Conc: 556.97 ng/ml



#9 AR-1221-2
 R.T.: 5.448 min
 Delta R.T.: 0.000 min
 Response: 86196937
 Conc: 535.88 ng/ml



#9 AR-1221-2
 R.T.: 4.623 min
 Delta R.T.: 0.000 min
 Response: 14345814
 Conc: 537.11 ng/ml



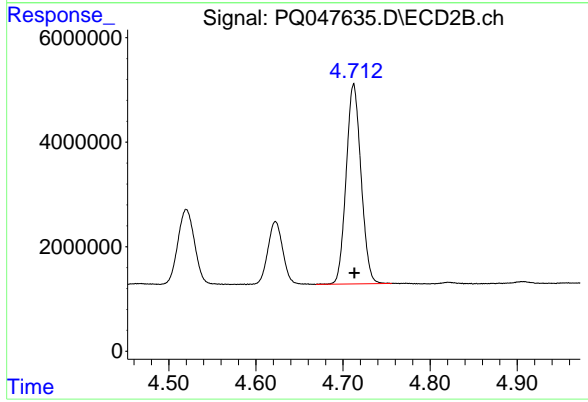
#10 AR-1221-3

R.T.: 5.534 min
Delta R.T.: 0.000 min
Response: 264452234
Conc: 542.36 ng/ml

Instrument :
ECD_Q
ClientSampleId :
AR1221CCC500

Manual Integrations
APPROVED

Sohil
5/7/2020 1:16:30 PM



#10 AR-1221-3

R.T.: 4.712 min
Delta R.T.: 0.000 min
Response: 45328645
Conc: 555.70 ng/ml