

Data Path : Z:\pestpcbsrv\HPCHEM1\ECD_Q\Data\PQ050919\
 Data File : PQ039558.D
 Signal(s) : Signal #1: ECD1A.ch Signal #2: ECD2B.ch
 Acq On : 10 May 2019 08:58
 Operator : AJ\MA
 Sample : K2762-19
 Misc :
 ALS Vial : 36 Sample Multiplier: 1

Instrument :
 ECD_Q
 ClientSampleId :
 P021-SS004-0002-01

Integration File signal 1: autoint1.e
 Integration File signal 2: autoint2.e
 Quant Time: May 10 10:16:55 2019
 Quant Method : Z:\pestpcbsrv\HPCHEM1\ECD_Q\Method\PQ050919.M
 Quant Title : GC EXTRACTABLES
 QLast Update : Fri May 10 01:55:02 2019
 Response via : Initial Calibration
 Integrator: ChemStation

Volume Inj. : 2 µl
 Signal #1 Phase : ZB-MR1 Signal #2 Phase: ZB-MR2
 Signal #1 Info : 30Mx0.32mmx 0.50µ Signal #2 Info : 30M x 0.32mm x 0.25µm

Compound	RT#1	RT#2	Resp#1	Resp#2	ng/ml	ng/ml

System Monitoring Compounds						
1) SA Tetrachlo...	5.667	4.765	59282472	38205087	10.371	10.411
2) SA Decachlor...	12.049	10.519	44065990	22336617	6.820	6.741

Target Compounds

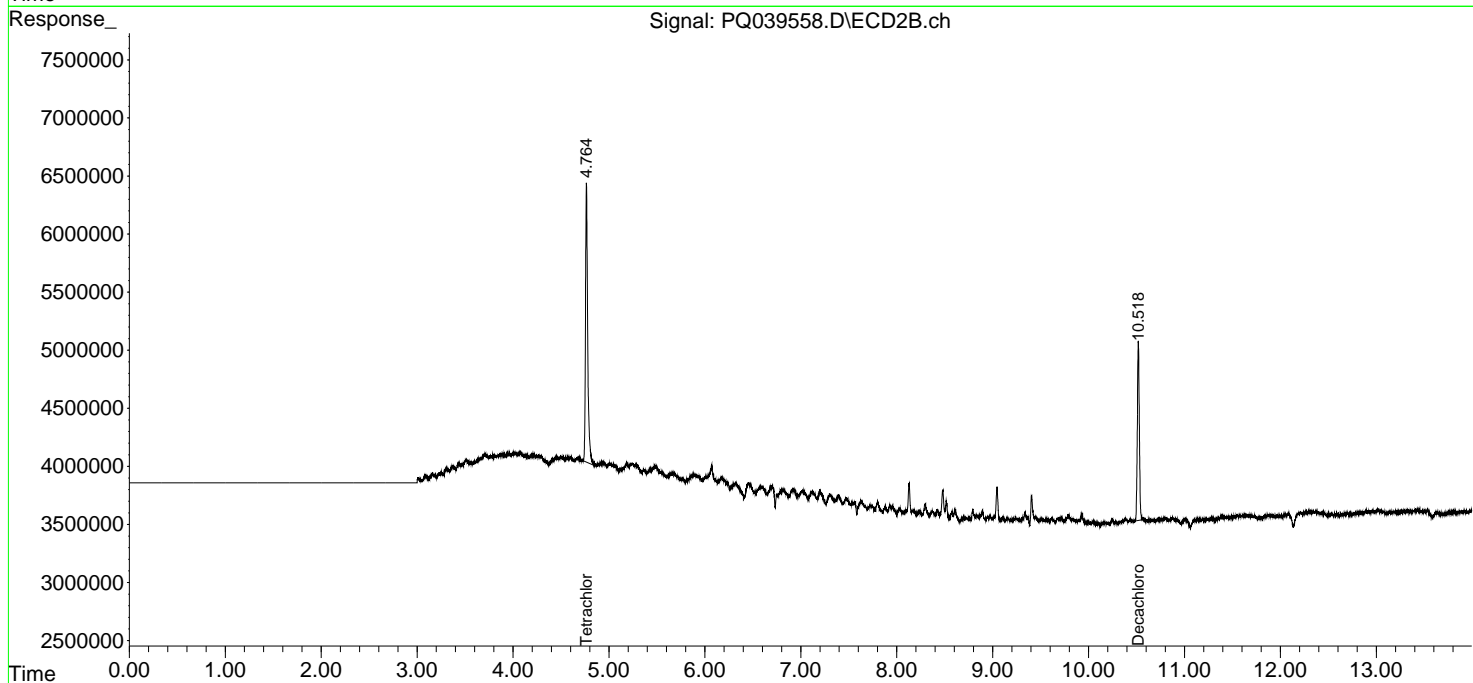
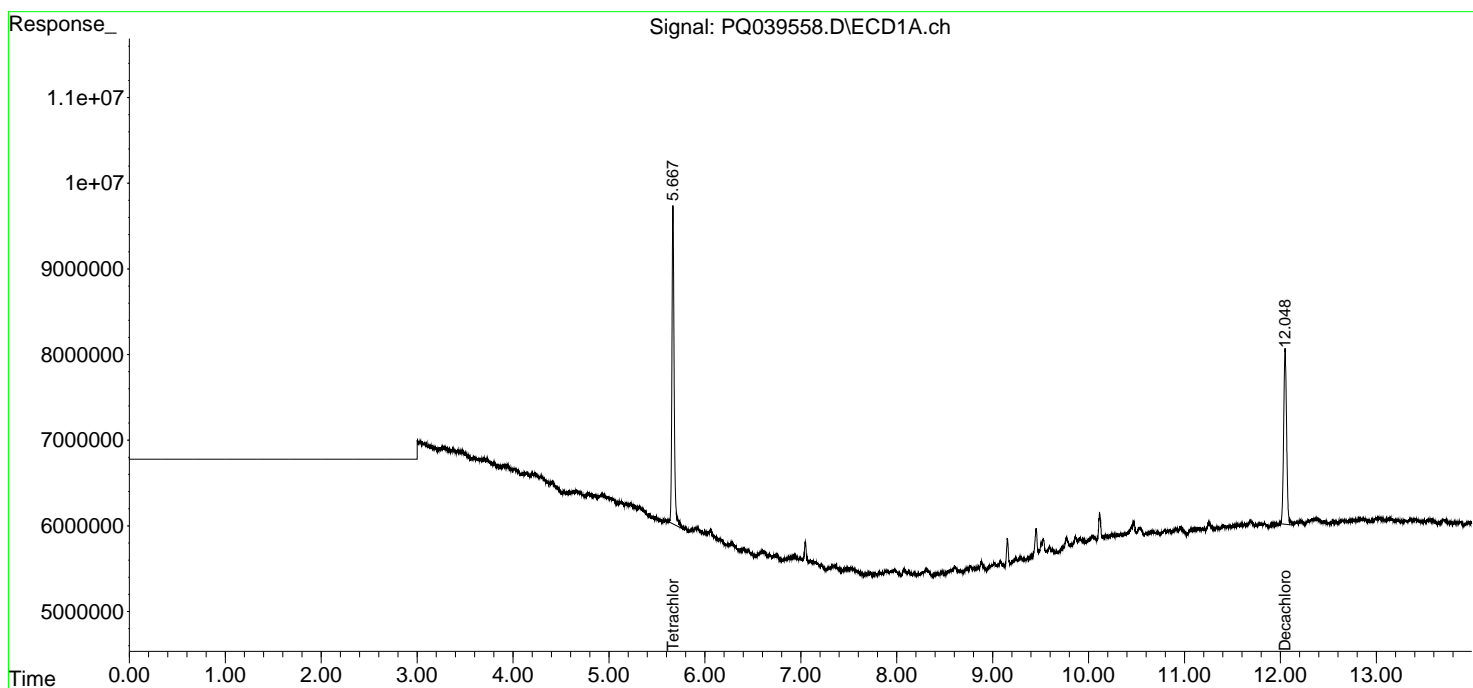
(f)=RT Delta > 1/2 Window (#)=Amounts differ by > 25% (m)=manual int.

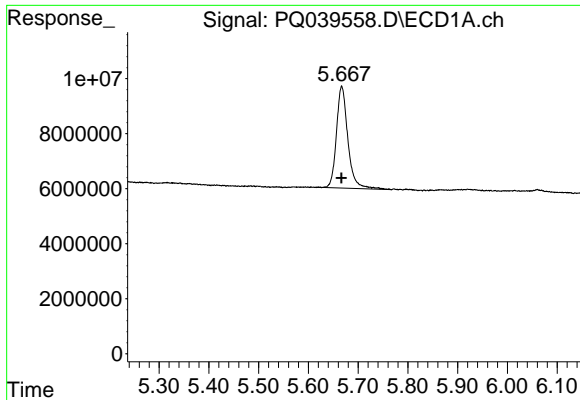
Data Path : Z:\pestpcbsrv\HPCHEM1\ECD_Q\Data\PQ050919\
 Data File : PQ039558.D
 Signal(s) : Signal #1: ECD1A.ch Signal #2: ECD2B.ch
 Acq On : 10 May 2019 08:58
 Operator : AJ\MA
 Sample : K2762-19
 Misc :
 ALS Vial : 36 Sample Multiplier: 1

Instrument :
 ECD_Q
 ClientSampleId :
 P021-SS004-0002-01

Integration File signal 1: autoint1.e
 Integration File signal 2: autoint2.e
 Quant Time: May 10 10:16:55 2019
 Quant Method : Z:\pestpcbsrv\HPCHEM1\ECD_Q\Method\PQ050919.M
 Quant Title : GC EXTRACTABLES
 QLast Update : Fri May 10 01:55:02 2019
 Response via : Initial Calibration
 Integrator: ChemStation

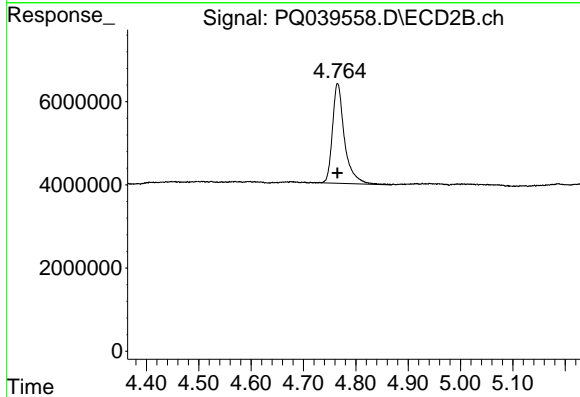
Volume Inj. : 2 µl
 Signal #1 Phase : ZB-MR1 Signal #2 Phase: ZB-MR2
 Signal #1 Info : 30Mx0.32mmx 0.50µ Signal #2 Info : 30M x 0.32mm x 0.25µm



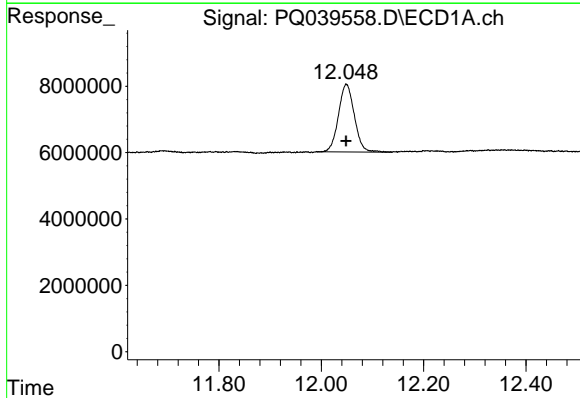


#1 Tetrachloro-m-xylene
 R.T.: 5.667 min
 Delta R.T.: 0.001 min
 Response: 59282472
 Conc: 10.37 ng/ml

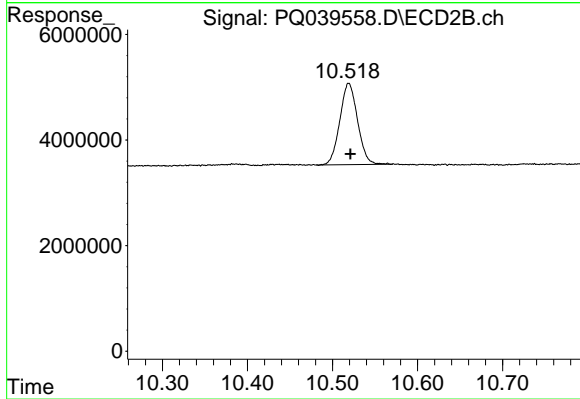
Instrument :
 ECD_Q
 ClientSampleId :
 P021-SS004-0002-01



#1 Tetrachloro-m-xylene
 R.T.: 4.765 min
 Delta R.T.: 0.000 min
 Response: 38205087
 Conc: 10.41 ng/ml



#2 Decachlorobiphenyl
 R.T.: 12.049 min
 Delta R.T.: 0.000 min
 Response: 44065990
 Conc: 6.82 ng/ml



#2 Decachlorobiphenyl
 R.T.: 10.519 min
 Delta R.T.: -0.002 min
 Response: 22336617
 Conc: 6.74 ng/ml