

Data Path : Z:\pestpcbsrv\HPCHEM1\ECD_Q\Data\PQ051019\
 Data File : PQ039601.D
 Signal(s) : Signal #1: ECD1A.ch Signal #2: ECD2B.ch
 Acq On : 10 May 2019 22:51
 Operator : AJ\MA
 Sample : K2764-13
 Misc :
 ALS Vial : 48 Sample Multiplier: 1

Integration File signal 1: autoint1.e
 Integration File signal 2: autoint2.e
 Quant Time: May 11 00:00:29 2019
 Quant Method : Z:\pestpcbsrv\HPCHEM1\ECD_Q\Method\PQ050919.M
 Quant Title : GC EXTRACTABLES
 QLast Update : Fri May 10 01:55:02 2019
 Response via : Initial Calibration
 Integrator: ChemStation

Volume Inj. : 2 µl
 Signal #1 Phase : ZB-MR2 Signal #2 Phase: ZB-MR2
 Signal #1 Info : 30Mx0.32mmx 0.50µ Signal #2 Info : 30M x 0.32mm x 0.25µm

Compound	RT#1	RT#2	Resp#1	Resp#2	ng/ml	ng/ml

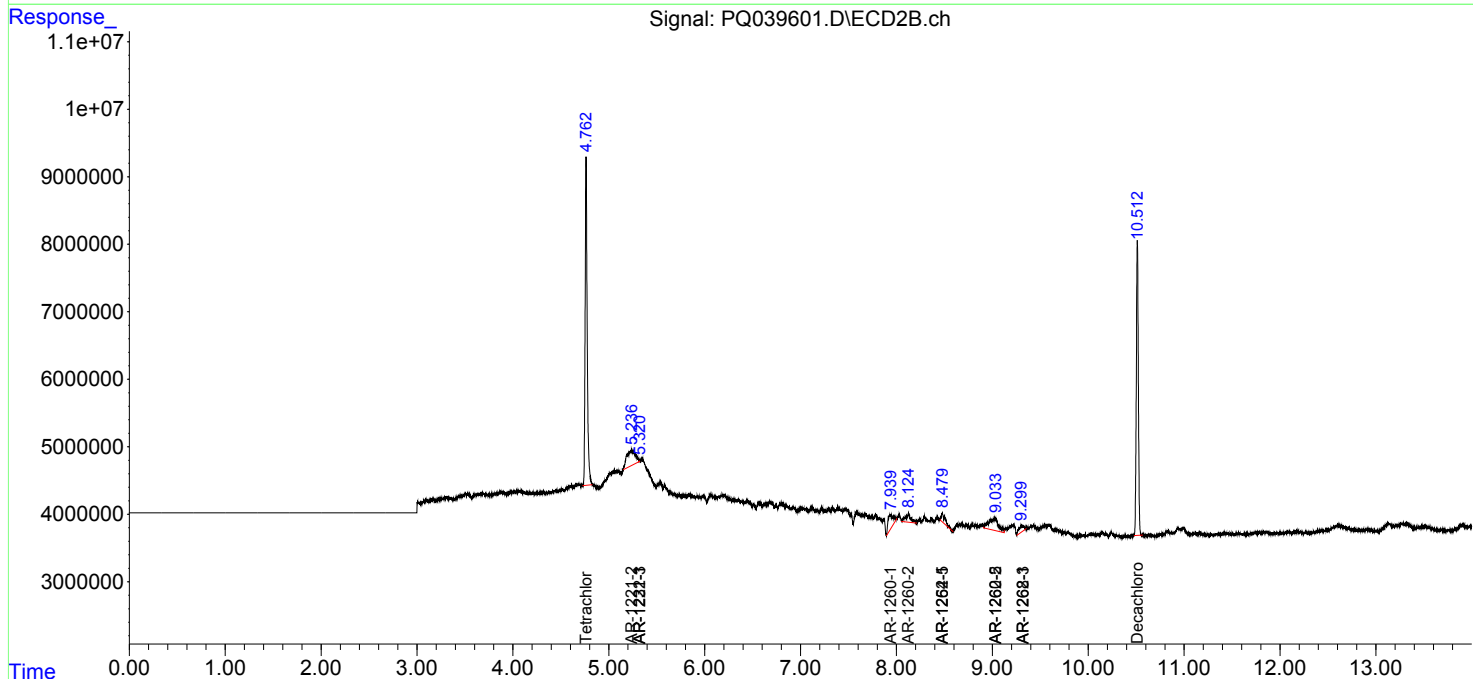
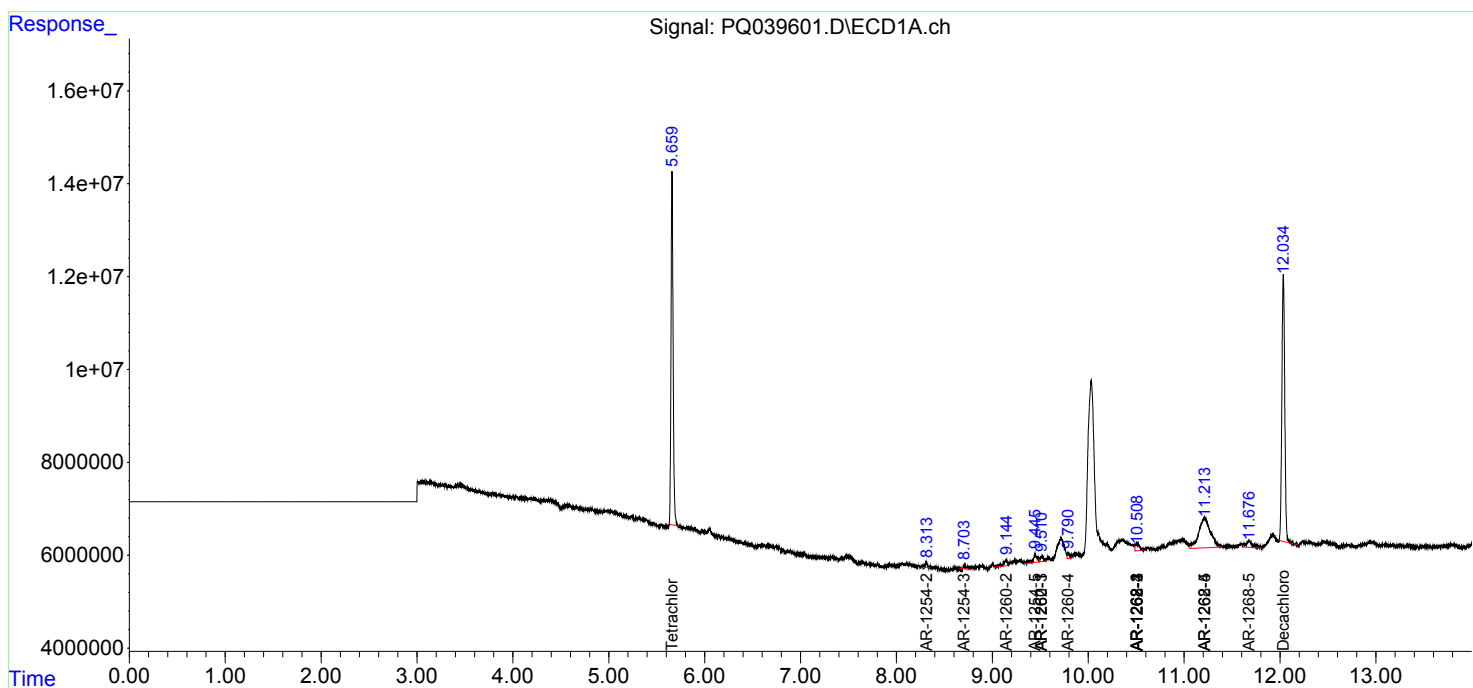
System Monitoring Compounds						
1) SA Tetrachlo...	5.660	4.763	115.1E6	72405226	20.131	19.730
2) SA Decachlor...	12.034	10.512	120.5E6	63431651	18.646	19.144
Target Compounds						
9) L2 AR-1221-2	0.000	5.236	0	14232514	N.D.	506.217 #
10) L2 AR-1221-3	0.000	5.320	0	89552	N.D.	0.955 #
11) L3 AR-1232-1	0.000	5.320	0	89552	N.D.	0.887 #
27) L6 AR-1254-2	8.313	0.000	2126129	0	5.885	N.D. #
28) L6 AR-1254-3	8.704	0.000	921218	0	2.435	N.D. #
30) L6 AR-1254-5	9.444	8.478	6206702	3893362	21.770	15.179 #
31) L7 AR-1260-1	0.000	7.939	0	7924983	N.D.	44.749 #
32) L7 AR-1260-2	9.144	8.126	3427611	4826762	10.997	21.998 #
33) L7 AR-1260-3	9.519	0.000	2884462	0	11.540	N.D. #
34) L7 AR-1260-4	9.792	0.000	2078078	0	7.203	N.D. #
35) L7 AR-1260-5	0.000	9.038	0	12299810	N.D.	29.012 #
36) L8 AR-1262-1	9.519	8.478	2884462	3893362	7.079	12.686 #
37) L8 AR-1262-2	0.000	9.038	0	12299810	N.D.	22.260 #
38) L8 AR-1262-3	10.511	9.312	4448103	3488680	9.061	17.319 #
39) L8 AR-1262-4	10.511	0.000	4448103	0	11.311	N.D. #
40) L8 AR-1262-5	11.213	0.000	55159376	0	221.901	N.D. #
41) L9 AR-1268-1	10.511	9.312	4448103	3488680	5.325	6.064
42) L9 AR-1268-2	10.511	0.000	4448103	0	5.494	N.D. #
44) L9 AR-1268-4	11.213	0.000	55159376	0	208.786	N.D. #
45) L9 AR-1268-5	11.679	0.000	6772148	0	3.200	N.D. #

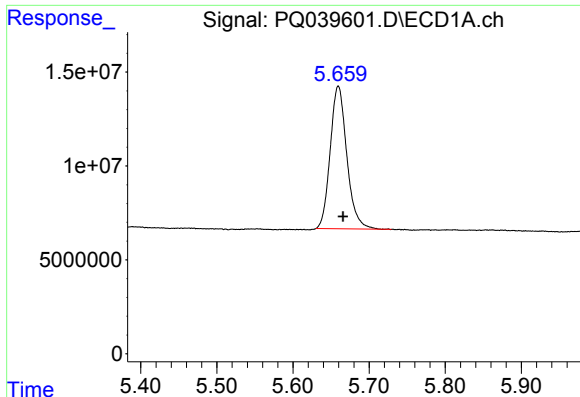
(f)=RT Delta > 1/2 Window (#)=Amounts differ by > 25% (m)=manual int.

Data Path : Z:\pestpcbsrv\HPCHEM1\ECD_Q\Data\PQ051019\
 Data File : PQ039601.D
 Signal(s) : Signal #1: ECD1A.ch Signal #2: ECD2B.ch
 Acq On : 10 May 2019 22:51
 Operator : AJ\MA
 Sample : K2764-13
 Misc :
 ALS Vial : 48 Sample Multiplier: 1

Integration File signal 1: autoint1.e
 Integration File signal 2: autoint2.e
 Quant Time: May 11 00:00:29 2019
 Quant Method : Z:\pestpcbsrv\HPCHEM1\ECD_Q\Method\PQ050919.M
 Quant Title : GC EXTRACTABLES
 QLast Update : Fri May 10 01:55:02 2019
 Response via : Initial Calibration
 Integrator: ChemStation

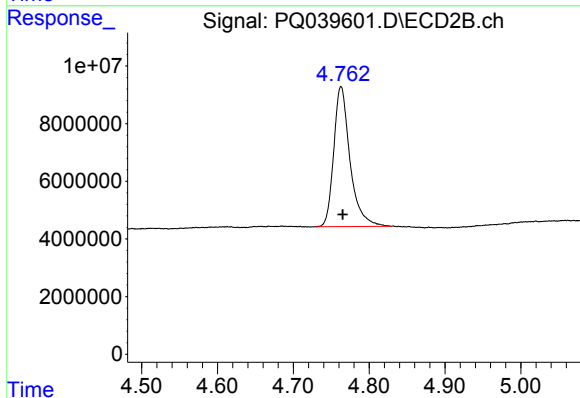
Volume Inj. : 2 µl
 Signal #1 Phase : ZB-MR1 Signal #2 Phase: ZB-MR2
 Signal #1 Info : 30Mx0.32mmx 0.50µ Signal #2 Info : 30M x 0.32mm x 0.25µm





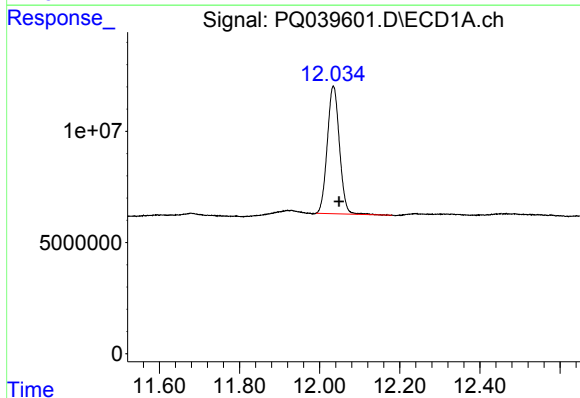
#1 Tetrachloro-m-xylene

R.T.: 5.660 min
Delta R.T.: -0.006 min
Response: 115076406
Conc: 20.13 ng/ml



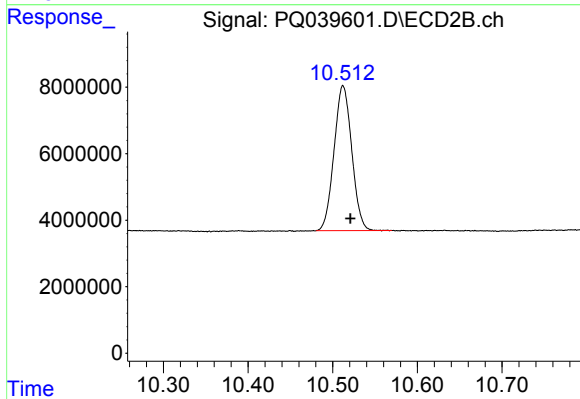
#1 Tetrachloro-m-xylene

R.T.: 4.763 min
Delta R.T.: -0.002 min
Response: 72405226
Conc: 19.73 ng/ml



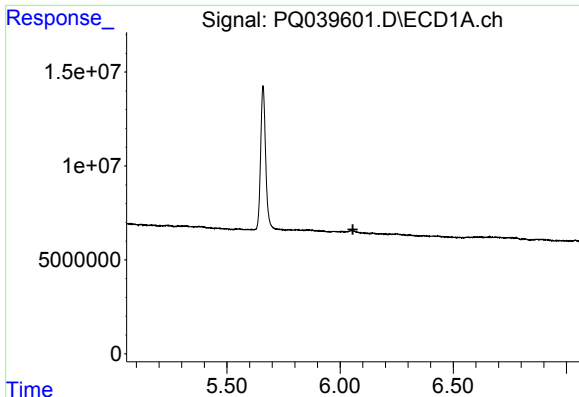
#2 Decachlorobiphenyl

R.T.: 12.034 min
Delta R.T.: -0.014 min
Response: 120479938
Conc: 18.65 ng/ml



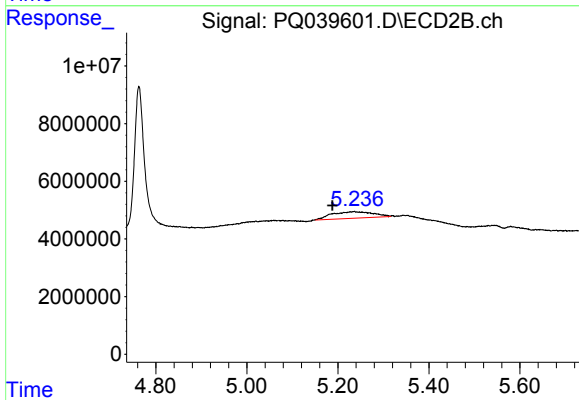
#2 Decachlorobiphenyl

R.T.: 10.512 min
Delta R.T.: -0.009 min
Response: 63431651
Conc: 19.14 ng/ml



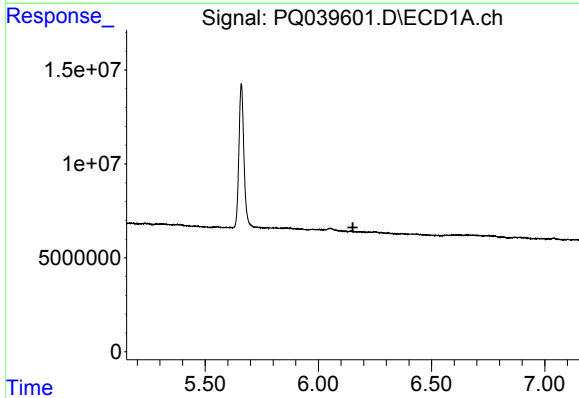
#9 AR-1221-2

R.T.: 0.000 min
 Exp R.T. : 6.056 min
 Response: 0
 Conc: N.D.



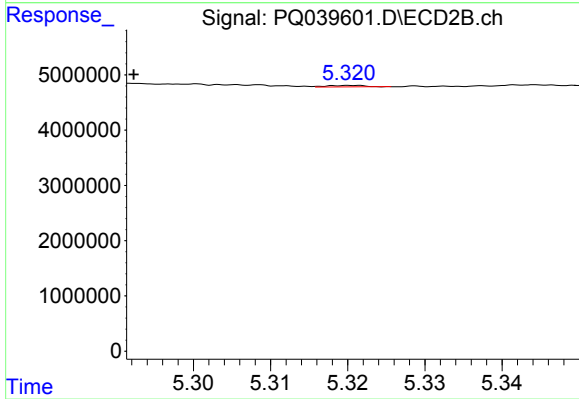
#9 AR-1221-2

R.T.: 5.236 min
 Delta R.T.: 0.048 min
 Response: 14232514
 Conc: 506.22 ng/ml



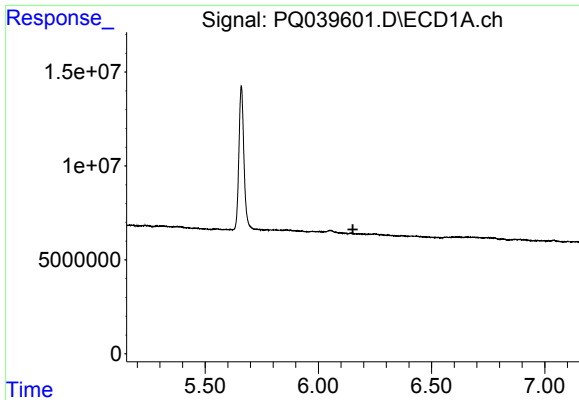
#10 AR-1221-3

R.T.: 0.000 min
 Exp R.T. : 6.152 min
 Response: 0
 Conc: N.D.



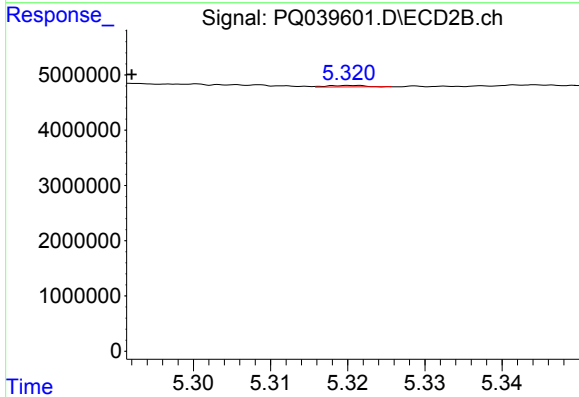
#10 AR-1221-3

R.T.: 5.320 min
 Delta R.T.: 0.028 min
 Response: 89552
 Conc: 0.95 ng/ml



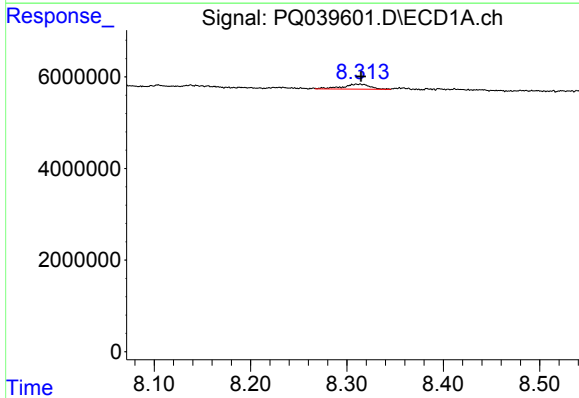
#11 AR-1232-1

R.T.: 0.000 min
 Exp R.T. : 6.153 min
 Response: 0
 Conc: N.D.



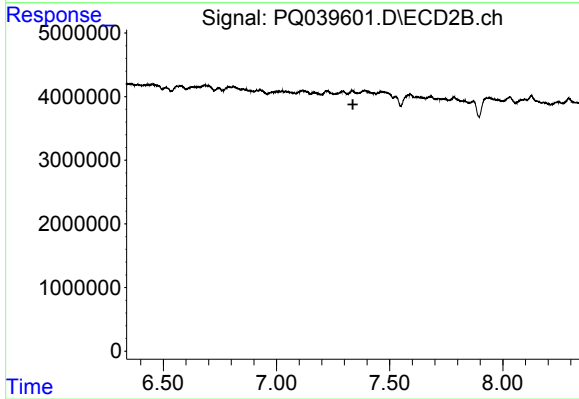
#11 AR-1232-1

R.T.: 5.320 min
 Delta R.T.: 0.028 min
 Response: 89552
 Conc: 0.89 ng/ml



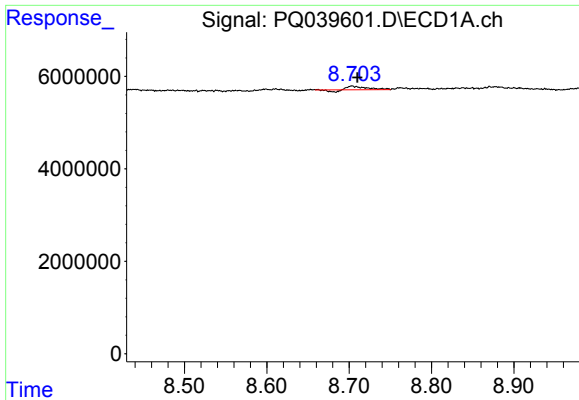
#27 AR-1254-2

R.T.: 8.313 min
 Delta R.T.: -0.002 min
 Response: 2126129
 Conc: 5.89 ng/ml

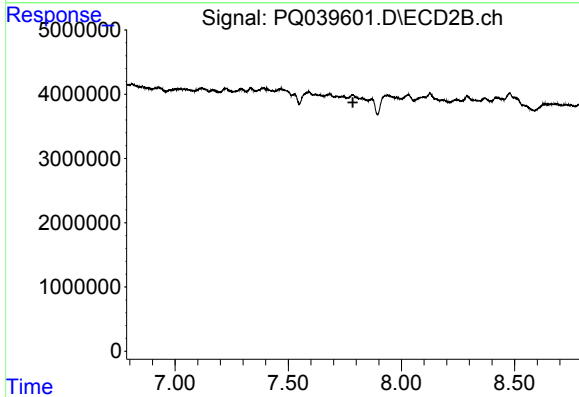


#27 AR-1254-2

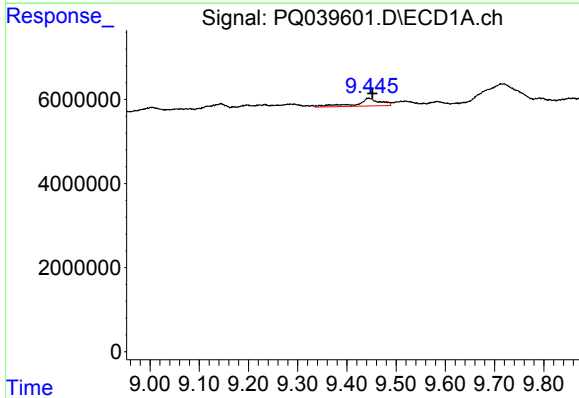
R.T.: 0.000 min
 Exp R.T. : 7.337 min
 Response: 0
 Conc: N.D.



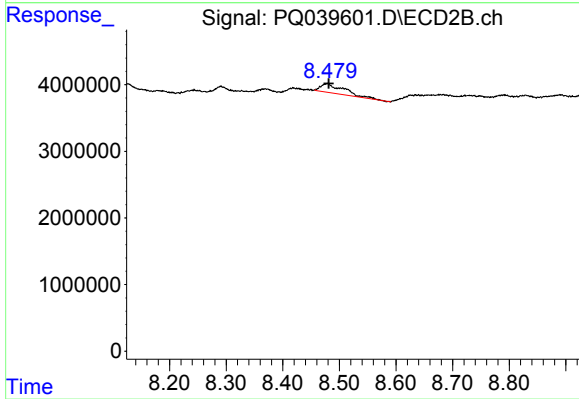
#28 AR-1254-3
 R.T.: 8.704 min
 Delta R.T.: -0.006 min
 Response: 921218
 Conc: 2.43 ng/ml



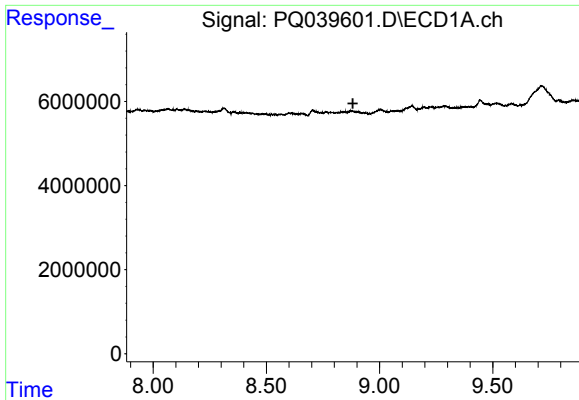
#28 AR-1254-3
 R.T.: 0.000 min
 Exp R.T.: 7.786 min
 Response: 0
 Conc: N.D.



#30 AR-1254-5
 R.T.: 9.444 min
 Delta R.T.: -0.007 min
 Response: 6206702
 Conc: 21.77 ng/ml

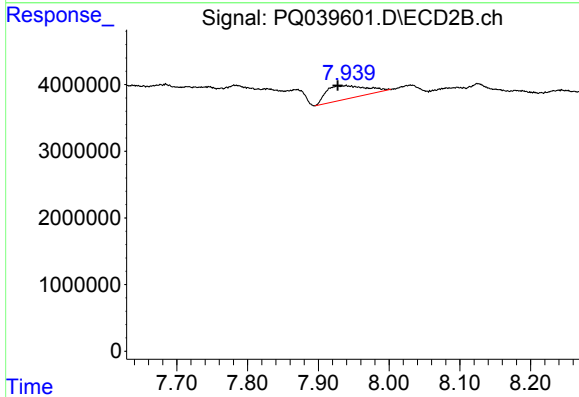


#30 AR-1254-5
 R.T.: 8.478 min
 Delta R.T.: -0.003 min
 Response: 3893362
 Conc: 15.18 ng/ml



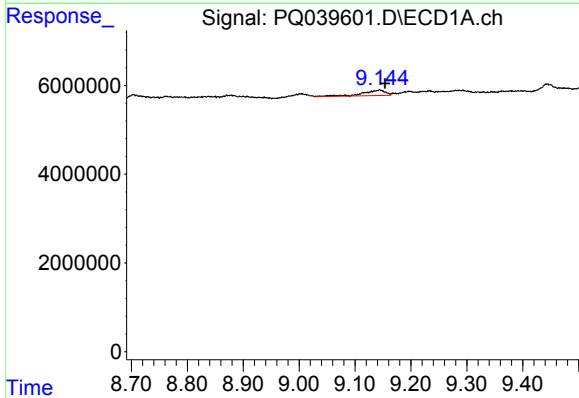
#31 AR-1260-1

R.T.: 0.000 min
 Exp R.T. : 8.882 min
 Response: 0
 Conc: N.D.



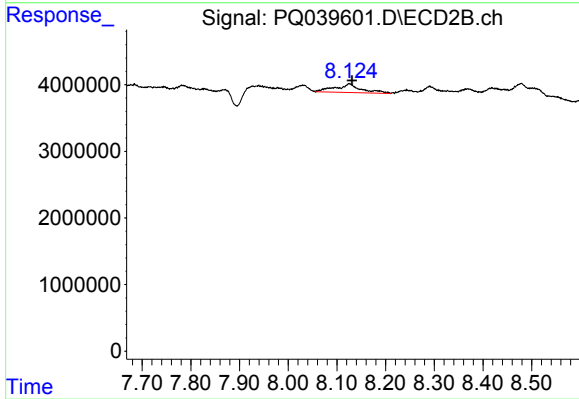
#31 AR-1260-1

R.T.: 7.939 min
 Delta R.T.: 0.012 min
 Response: 7924983
 Conc: 44.75 ng/ml



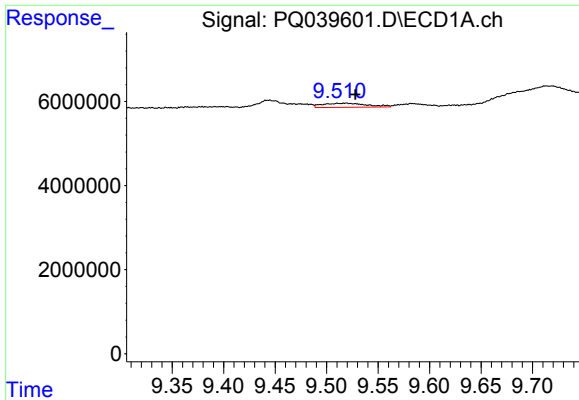
#32 AR-1260-2

R.T.: 9.144 min
 Delta R.T.: -0.010 min
 Response: 3427611
 Conc: 11.00 ng/ml

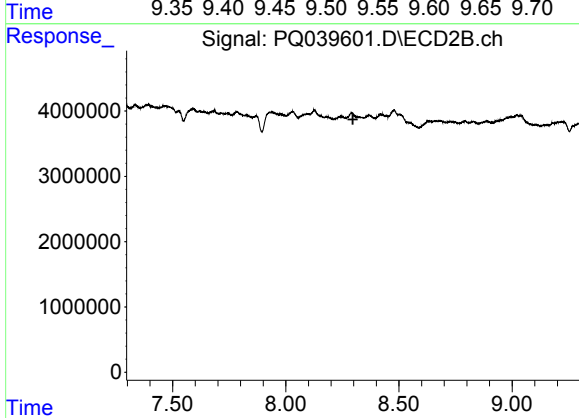


#32 AR-1260-2

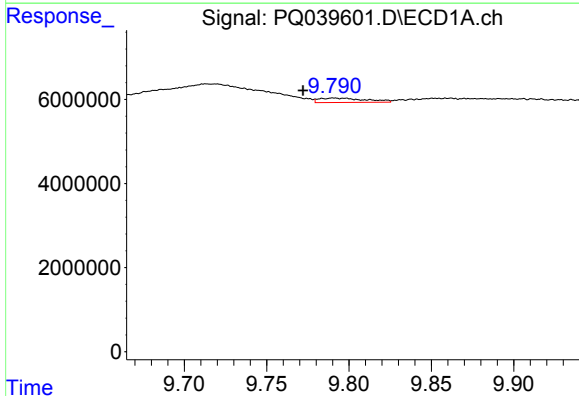
R.T.: 8.126 min
 Delta R.T.: -0.005 min
 Response: 4826762
 Conc: 22.00 ng/ml



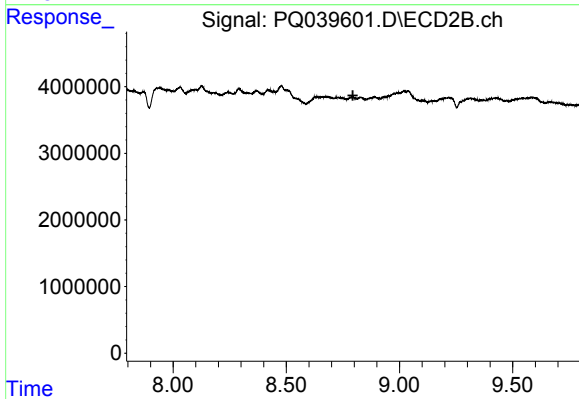
#33 AR-1260-3
 R.T.: 9.519 min
 Delta R.T.: -0.009 min
 Response: 2884462
 Conc: 11.54 ng/ml



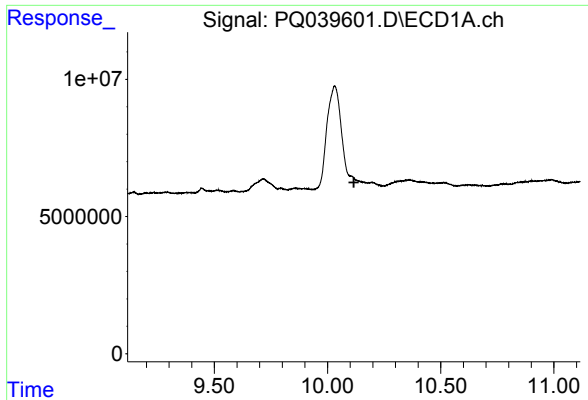
#33 AR-1260-3
 R.T.: 0.000 min
 Exp R.T.: 8.297 min
 Response: 0
 Conc: N.D.



#34 AR-1260-4
 R.T.: 9.792 min
 Delta R.T.: 0.020 min
 Response: 2078078
 Conc: 7.20 ng/ml

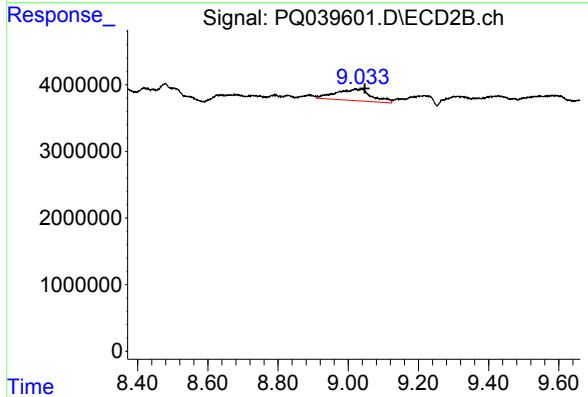


#34 AR-1260-4
 R.T.: 0.000 min
 Exp R.T.: 8.794 min
 Response: 0
 Conc: N.D.



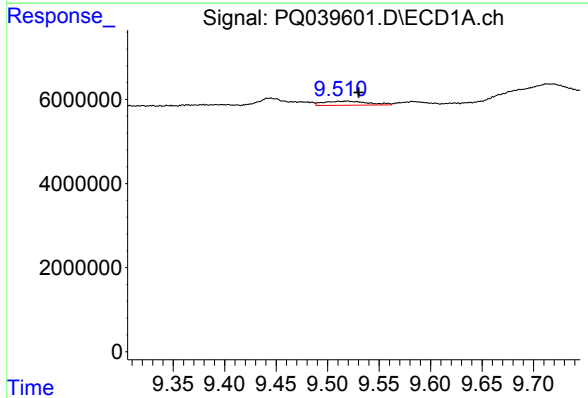
#35 AR-1260-5

R.T.: 0.000 min
 Exp R.T. : 10.117 min
 Response: 0
 Conc: N.D.



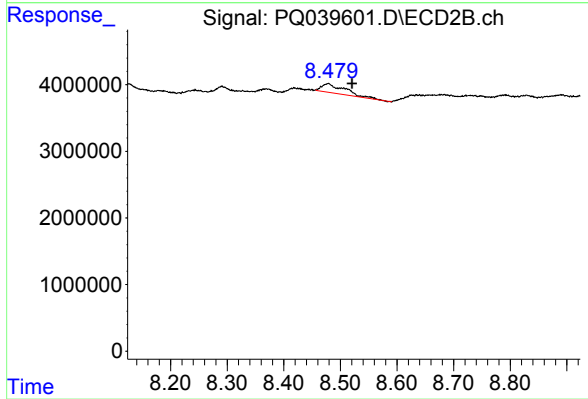
#35 AR-1260-5

R.T.: 9.038 min
 Delta R.T.: -0.009 min
 Response: 12299810
 Conc: 29.01 ng/ml



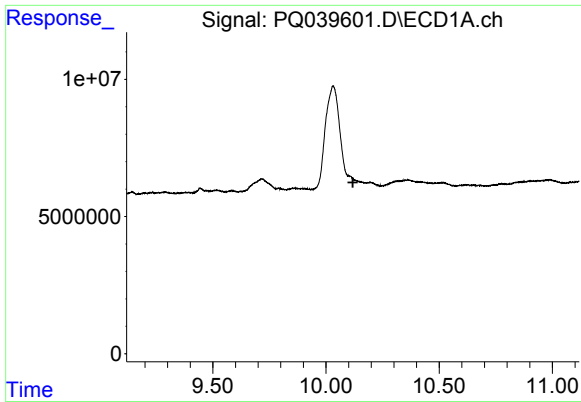
#36 AR-1262-1

R.T.: 9.519 min
 Delta R.T.: -0.011 min
 Response: 2884462
 Conc: 7.08 ng/ml



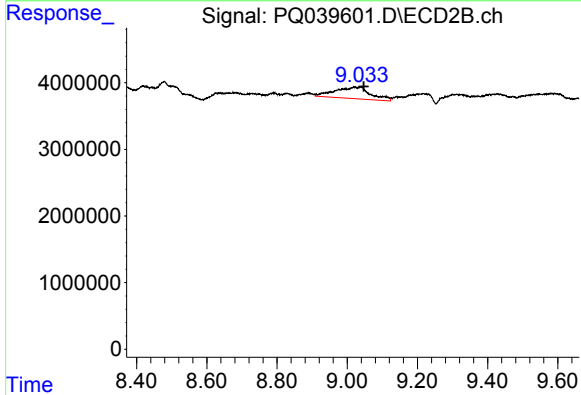
#36 AR-1262-1

R.T.: 8.478 min
 Delta R.T.: -0.042 min
 Response: 3893362
 Conc: 12.69 ng/ml



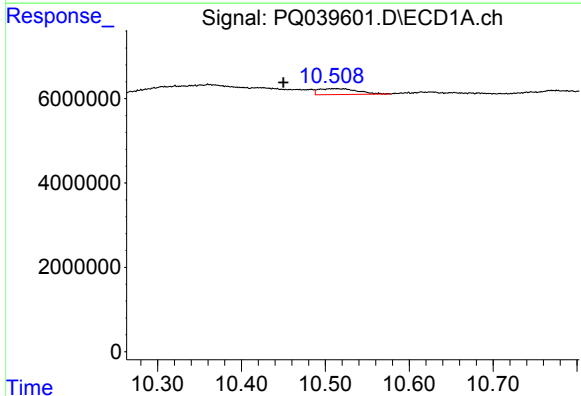
#37 AR-1262-2

R.T.: 0.000 min
 Exp R.T. : 10.119 min
 Response: 0
 Conc: N.D.



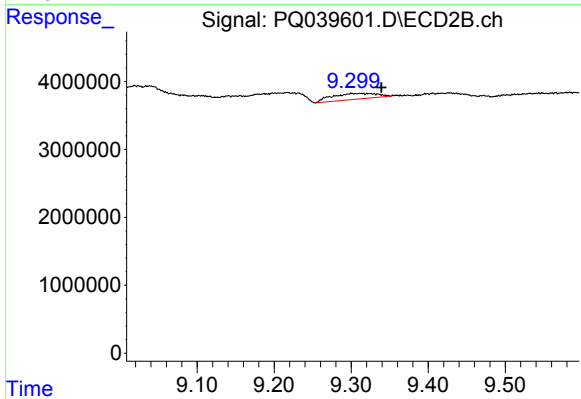
#37 AR-1262-2

R.T.: 9.038 min
 Delta R.T.: -0.009 min
 Response: 12299810
 Conc: 22.26 ng/ml



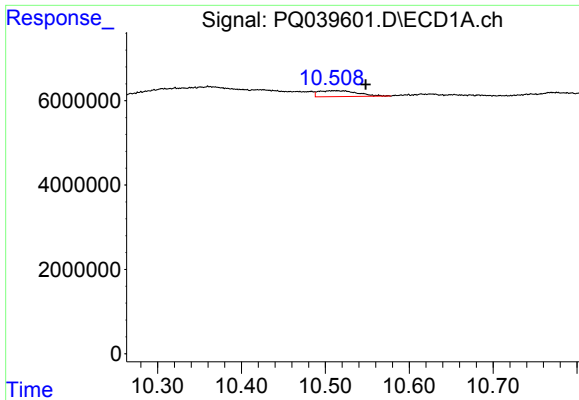
#38 AR-1262-3

R.T.: 10.511 min
 Delta R.T.: 0.061 min
 Response: 4448103
 Conc: 9.06 ng/ml

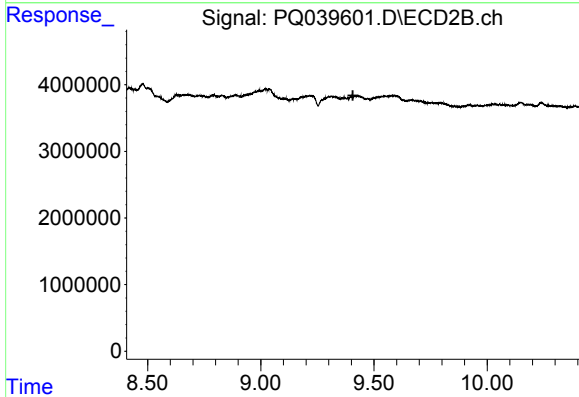


#38 AR-1262-3

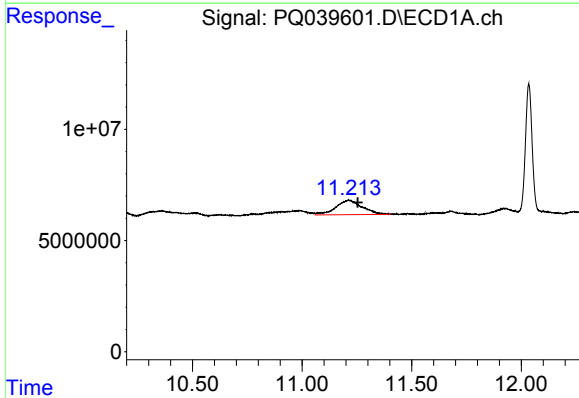
R.T.: 9.312 min
 Delta R.T.: -0.027 min
 Response: 3488680
 Conc: 17.32 ng/ml



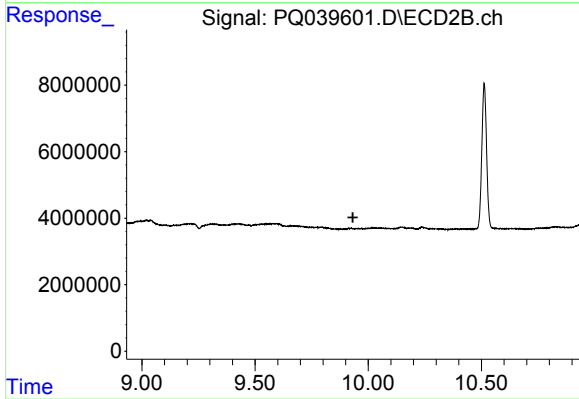
#39 AR-1262-4
 R.T.: 10.511 min
 Delta R.T.: -0.037 min
 Response: 4448103
 Conc: 11.31 ng/ml



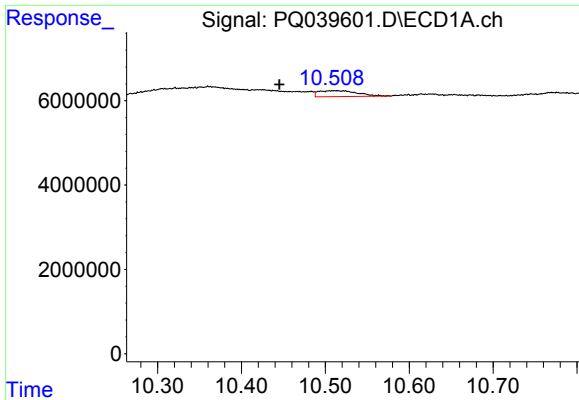
#39 AR-1262-4
 R.T.: 0.000 min
 Exp R.T. : 9.407 min
 Response: 0
 Conc: N.D.



#40 AR-1262-5
 R.T.: 11.213 min
 Delta R.T.: -0.042 min
 Response: 55159376
 Conc: 221.90 ng/ml

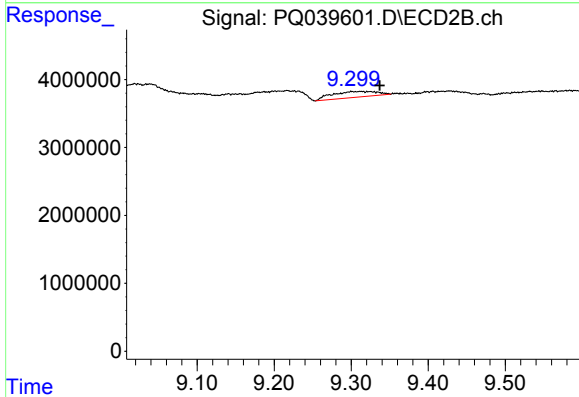


#40 AR-1262-5
 R.T.: 0.000 min
 Exp R.T. : 9.932 min
 Response: 0
 Conc: N.D.



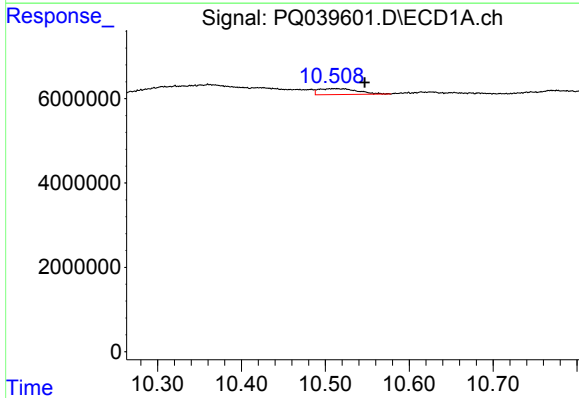
#41 AR-1268-1

R.T.: 10.511 min
 Delta R.T.: 0.066 min
 Response: 4448103
 Conc: 5.33 ng/ml



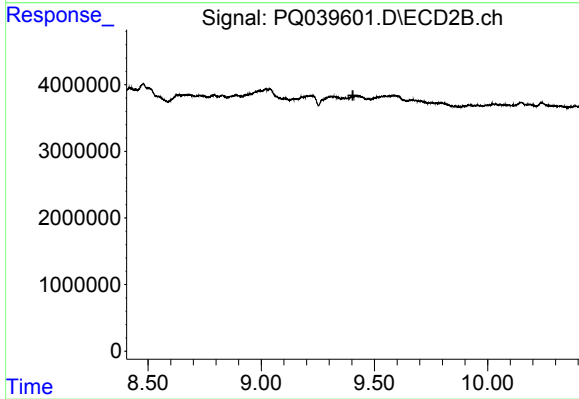
#41 AR-1268-1

R.T.: 9.312 min
 Delta R.T.: -0.025 min
 Response: 3488680
 Conc: 6.06 ng/ml



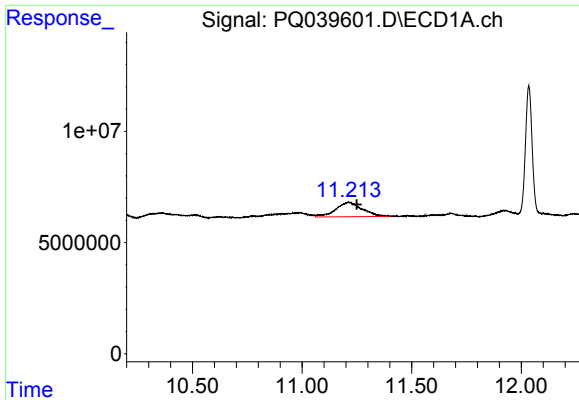
#42 AR-1268-2

R.T.: 10.511 min
 Delta R.T.: -0.036 min
 Response: 4448103
 Conc: 5.49 ng/ml

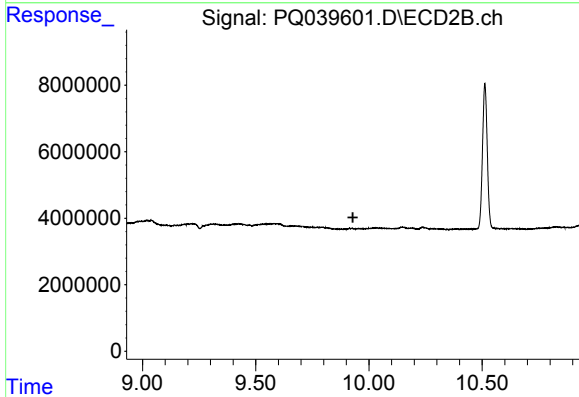


#42 AR-1268-2

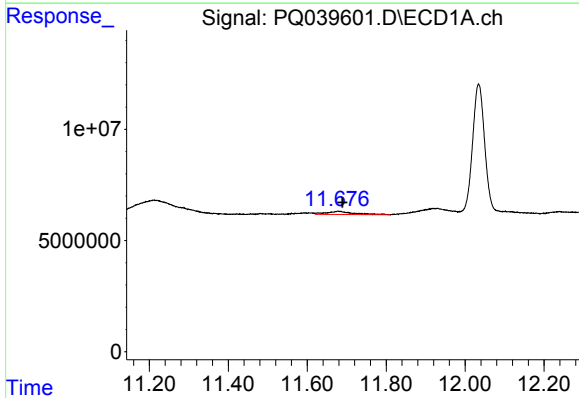
R.T.: 0.000 min
 Exp R.T.: 9.405 min
 Response: 0
 Conc: N.D.



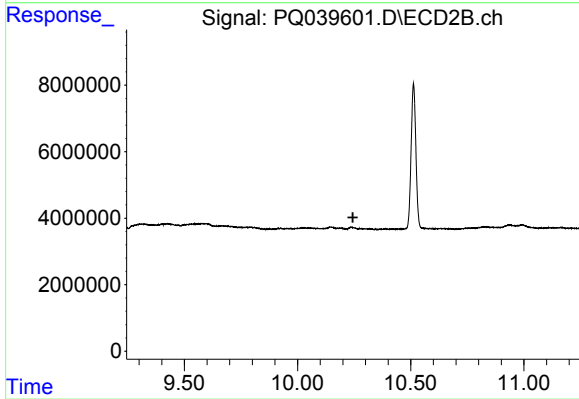
#44 AR-1268-4
R.T.: 11.213 min
Delta R.T.: -0.037 min
Response: 55159376
Conc: 208.79 ng/ml



#44 AR-1268-4
R.T.: 0.000 min
Exp R.T. : 9.929 min
Response: 0
Conc: N.D.



#45 AR-1268-5
R.T.: 11.679 min
Delta R.T.: -0.011 min
Response: 6772148
Conc: 3.20 ng/ml



#45 AR-1268-5
R.T.: 0.000 min
Exp R.T. : 10.245 min
Response: 0
Conc: N.D.