

Data Path : Z:\pestpcbsrv\HPCHEM1\ECD_Q\Data\PQ053022\
 Data File : PQ057827.D
 Signal(s) : Signal #1: ECD1A.ch Signal #2: ECD2B.ch
 Acq On : 28 May 2022 14:52
 Operator : YP\AJ
 Sample : N2930-09
 Misc :
 ALS Vial : 16 Sample Multiplier: 1

Instrument :
 ECD_Q
ClientSampleId :
 P005-SS003-1218-01

Integration File signal 1: autoint1.e
 Integration File signal 2: autoint2.e
 Quant Time: May 30 03:44:54 2022
 Quant Method : Z:\pestpcbsrv\HPCHEM1\ECD_Q\Method\PQ052822.M
 Quant Title : GC EXTRACTABLES
 QLast Update : Sat May 28 06:33:00 2022
 Response via : Initial Calibration
 Integrator: ChemStation

Volume Inj. : 2 µl
 Signal #1 Phase : ZB-MR2 Signal #2 Phase: ZB-MR2
 Signal #1 Info : 30Mx0.32mmx 0.50µ Signal #2 Info : 30M x 0.32mm x 0.25µm

Compound	RT#1	RT#2	Resp#1	Resp#2	ng/ml	ng/ml

System Monitoring Compounds						
1) SA Tetrachlo...	4.690	4.053	279.3E6	212.8E6	19.352	18.726
2) SA Decachlor...	10.614	9.209	251.4E6	175.5E6	20.047	18.492
Target Compounds						
31) L7 AR-1260-1	7.483	6.659	147.1E6	173.7E6	336.330	334.381
32) L7 AR-1260-2	7.739	6.843	473.9E6	513.1E6	855.254	822.848
33) L7 AR-1260-3	8.028	7.002	757.9E6	349.1E6	1125.161	535.973 #
34) L7 AR-1260-4	8.339	7.478	509.6E6	475.4E6	1021.217	945.424
35) L7 AR-1260-5	8.680	7.714	1221.7E6	1335.2E6	1096.578	1087.307

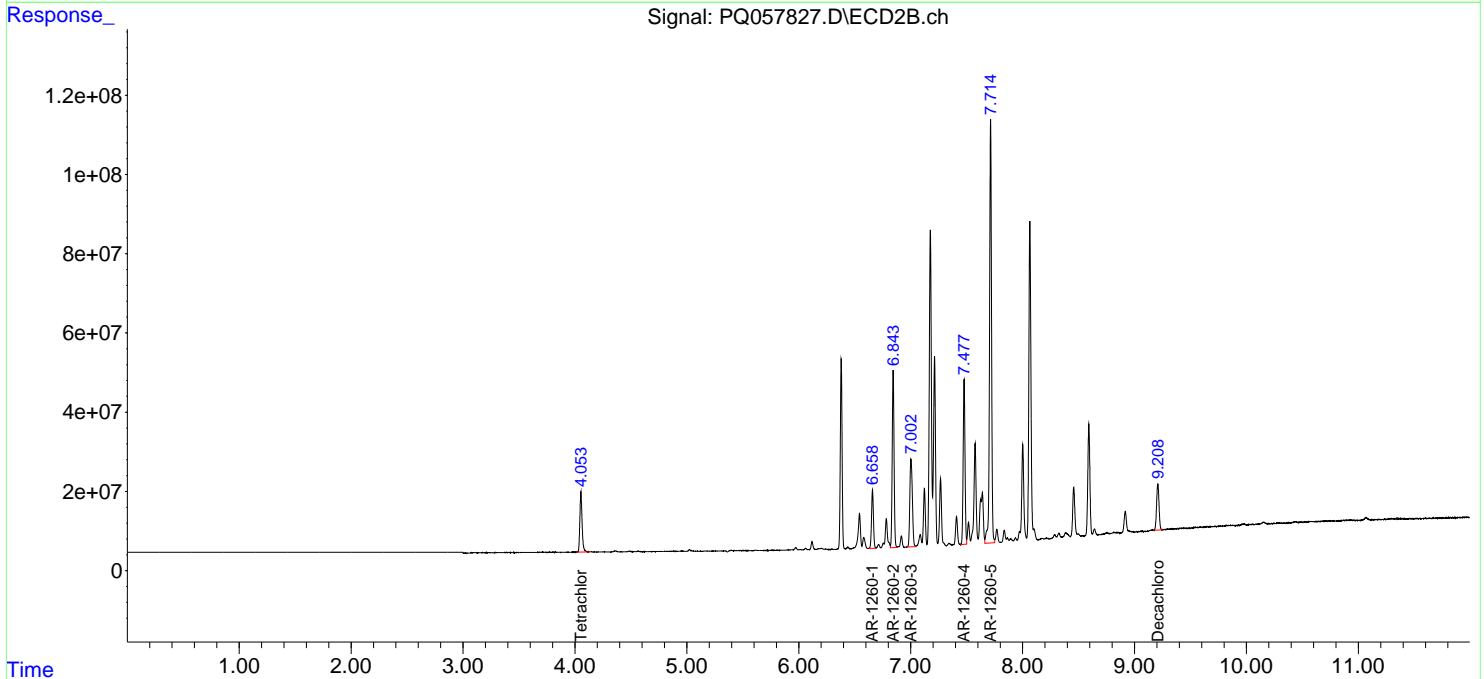
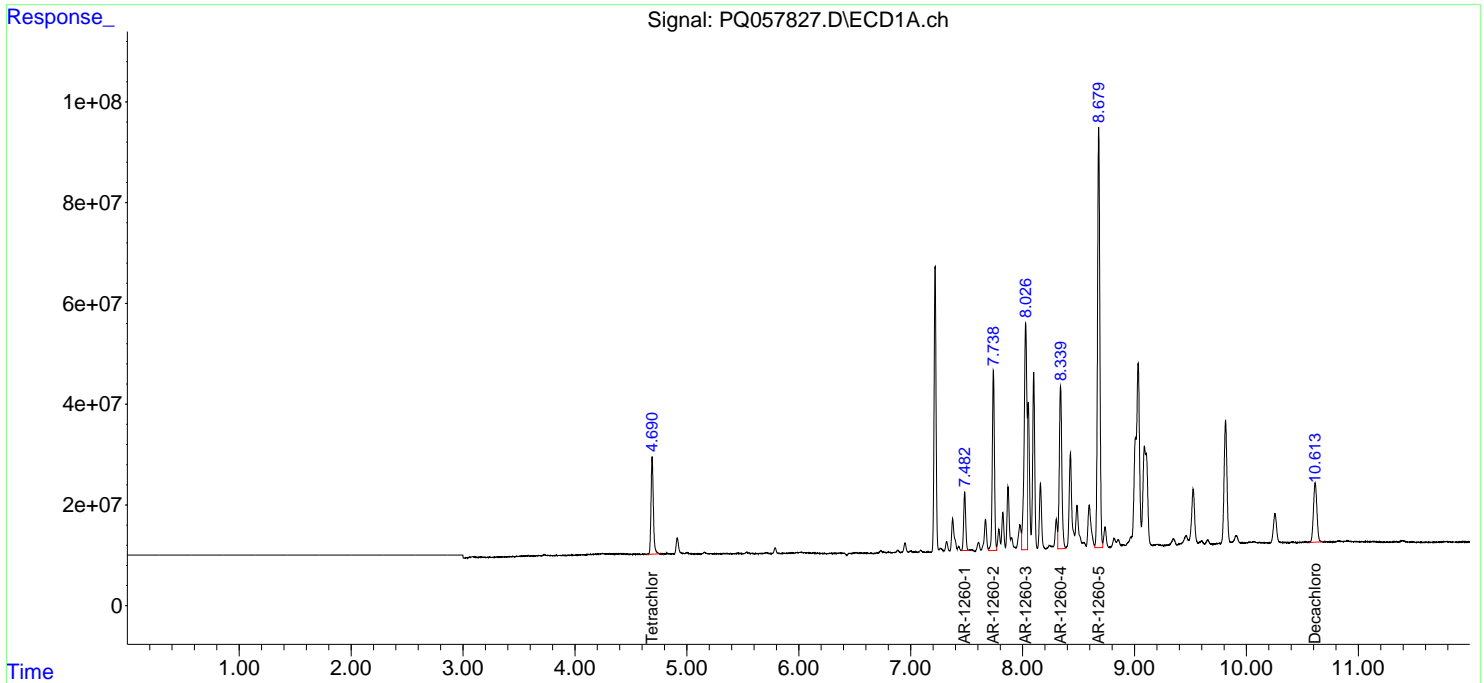
(f)=RT Delta > 1/2 Window (#)=Amounts differ by > 25% (m)=manual int.

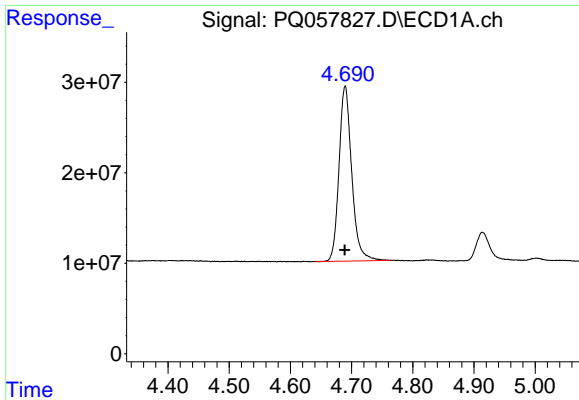
Data Path : Z:\pestpcbsrv\HPCHEM1\ECD_Q\Data\PQ053022\
 Data File : PQ057827.D
 Signal(s) : Signal #1: ECD1A.ch Signal #2: ECD2B.ch
 Acq On : 28 May 2022 14:52
 Operator : YP\AJ
 Sample : N2930-09
 Misc :
 ALS Vial : 16 Sample Multiplier: 1

Instrument :
 ECD_Q
 ClientSampleId :
 P005-SS003-1218-01

Integration File signal 1: autoint1.e
 Integration File signal 2: autoint2.e
 Quant Time: May 30 03:44:54 2022
 Quant Method : Z:\pestpcbsrv\HPCHEM1\ECD_Q\Method\PQ052822.M
 Quant Title : GC EXTRACTABLES
 QLast Update : Sat May 28 06:33:00 2022
 Response via : Initial Calibration
 Integrator: ChemStation

Volume Inj. : 2 µl
 Signal #1 Phase : ZB-MR1 Signal #2 Phase: ZB-MR2
 Signal #1 Info : 30Mx0.32mmx 0.50µ Signal #2 Info : 30M x 0.32mm x 0.25µm

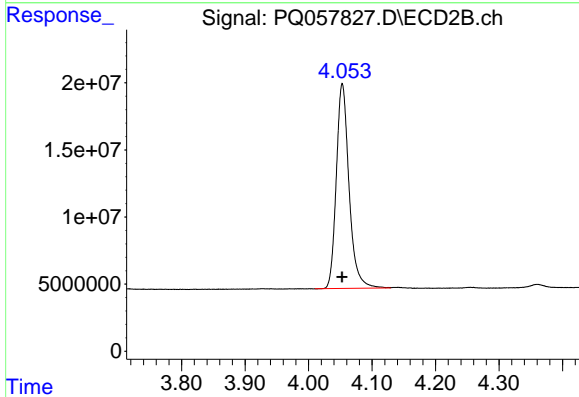




#1 Tetrachloro-m-xylene

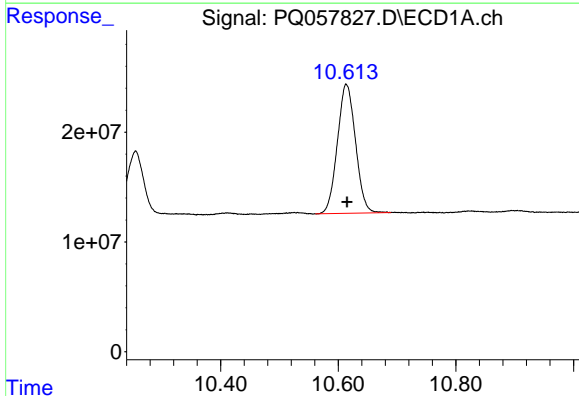
R.T.: 4.690 min
 Delta R.T.: 0.000 min
 Response: 279282812
 Conc: 19.35 ng/ml

Instrument :
 ECD_Q
 ClientSampleId :
 P005-SS003-1218-01



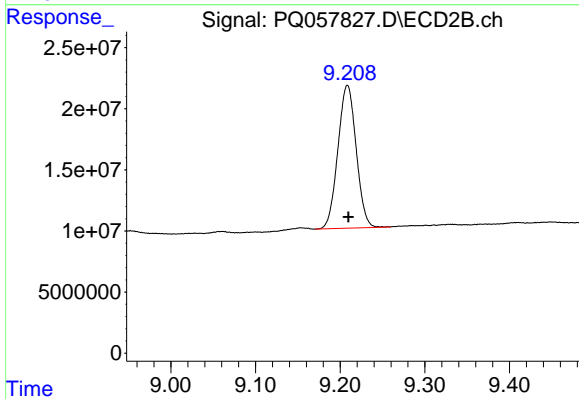
#1 Tetrachloro-m-xylene

R.T.: 4.053 min
 Delta R.T.: 0.000 min
 Response: 212788358
 Conc: 18.73 ng/ml



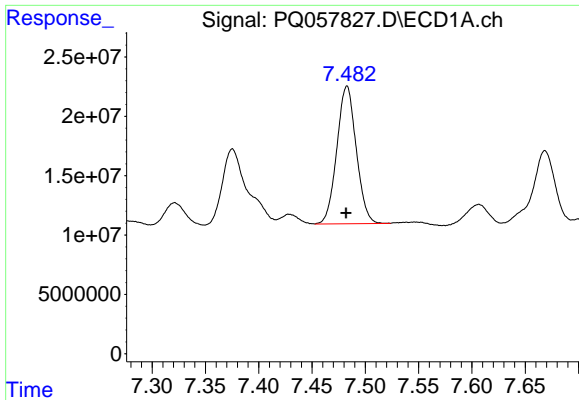
#2 Decachlorobiphenyl

R.T.: 10.614 min
 Delta R.T.: -0.002 min
 Response: 251417740
 Conc: 20.05 ng/ml



#2 Decachlorobiphenyl

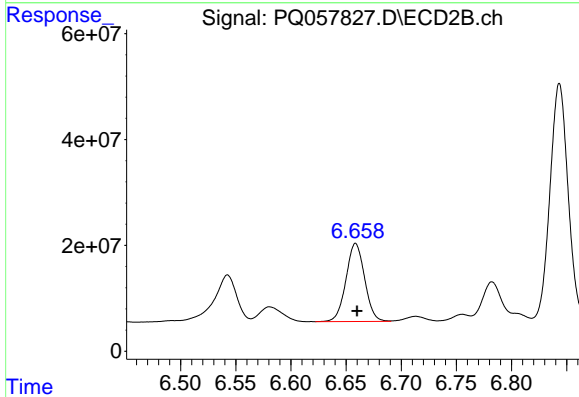
R.T.: 9.209 min
 Delta R.T.: -0.001 min
 Response: 175491520
 Conc: 18.49 ng/ml



#31 AR-1260-1

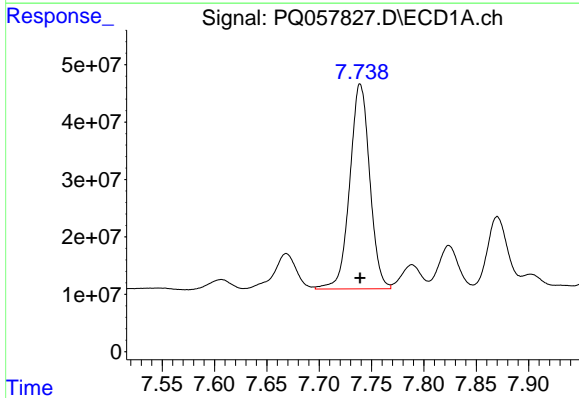
R.T.: 7.483 min
Delta R.T.: 0.000 min
Response: 147106892
Conc: 336.33 ng/ml

Instrument :
ECD_Q
ClientSampleId :
P005-SS003-1218-01



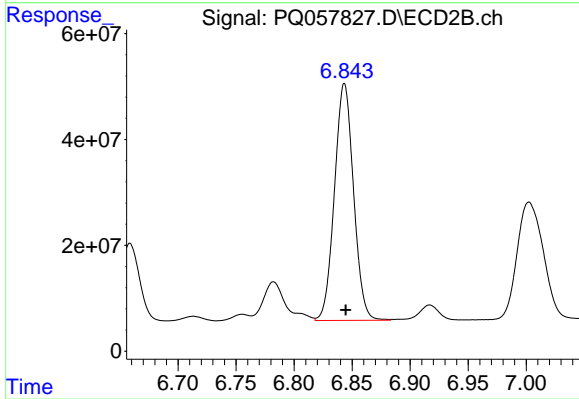
#31 AR-1260-1

R.T.: 6.659 min
Delta R.T.: -0.001 min
Response: 173728347
Conc: 334.38 ng/ml



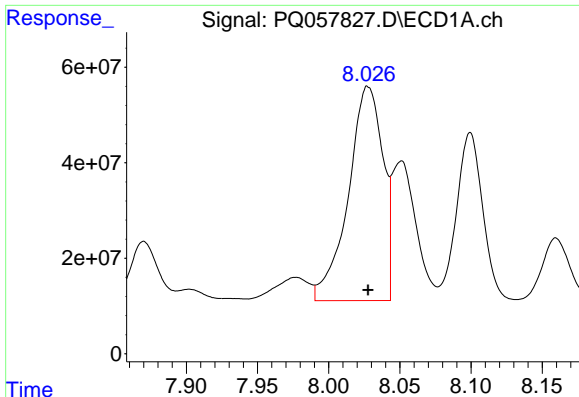
#32 AR-1260-2

R.T.: 7.739 min
Delta R.T.: 0.000 min
Response: 473898811
Conc: 855.25 ng/ml



#32 AR-1260-2

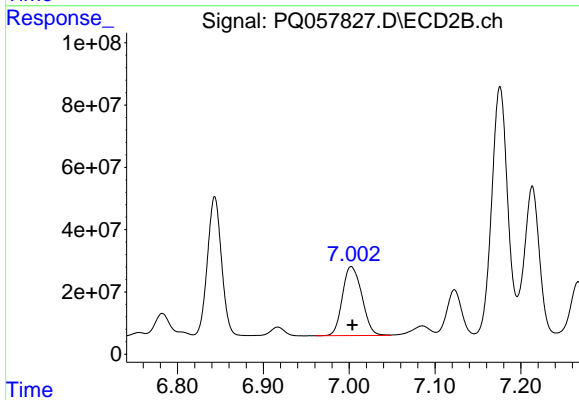
R.T.: 6.843 min
Delta R.T.: -0.001 min
Response: 513148405
Conc: 822.85 ng/ml



#33 AR-1260-3

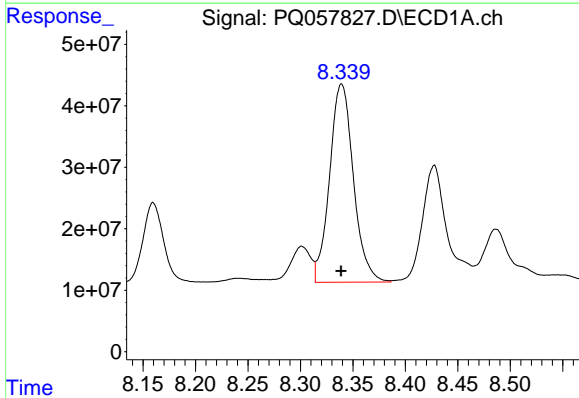
R.T.: 8.028 min
 Delta R.T.: 0.000 min
 Response: 757892286
 Conc: 1125.16 ng/ml

Instrument :
 ECD_Q
 ClientSampleId :
 P005-SS003-1218-01



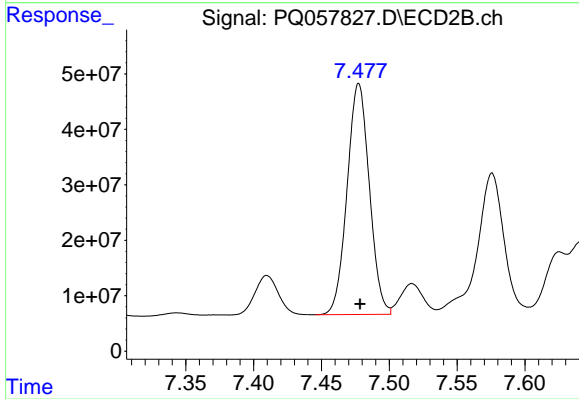
#33 AR-1260-3

R.T.: 7.002 min
 Delta R.T.: -0.002 min
 Response: 349107058
 Conc: 535.97 ng/ml



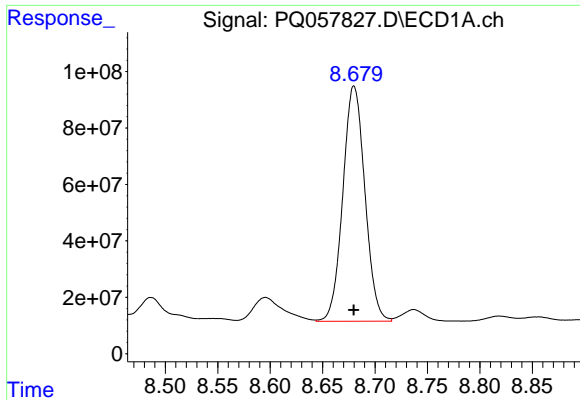
#34 AR-1260-4

R.T.: 8.339 min
 Delta R.T.: 0.000 min
 Response: 509580785
 Conc: 1021.22 ng/ml



#34 AR-1260-4

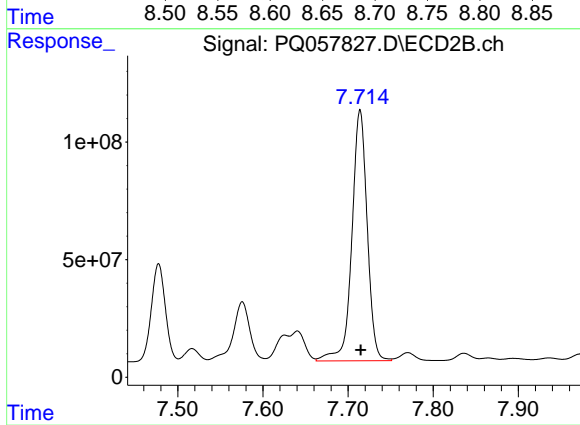
R.T.: 7.478 min
 Delta R.T.: 0.000 min
 Response: 475395971
 Conc: 945.42 ng/ml



#35 AR-1260-5

R.T.: 8.680 min
Delta R.T.: 0.000 min
Response: 1221724756
Conc: 1096.58 ng/ml

Instrument :
ECD_Q
ClientSampleId :
P005-SS003-1218-01



#35 AR-1260-5

R.T.: 7.714 min
Delta R.T.: 0.000 min
Response: 1335214268
Conc: 1087.31 ng/ml