

Data Path : Z:\pestpcbsrv\HPCHEM1\ECD_Q\Data\PQ060220\
 Data File : PQ047984.D
 Signal(s) : Signal #1: ECD1A.ch Signal #2: ECD2B.ch
 Acq On : 02 Jun 2020 17:53
 Operator : AJ\MA
 Sample : L2839-05
 Misc :
 ALS Vial : 27 Sample Multiplier: 1

Instrument :
 ECD_Q
ClientSampleId :
 NM13-COMP-2020-0-6

Manual Integrations
APPROVED
 Sohil
 6/4/2020 8:36:02 AM

Integration File signal 1: autoint1.e
 Integration File signal 2: autoint2.e
 Quant Time: Jun 03 01:40:26 2020
 Quant Method : Z:\pestpcbsrv\HPCHEM1\ECD_Q\Method\PQ052720.M
 Quant Title : GC EXTRACTABLES
 QLast Update : Wed May 27 17:33:08 2020
 Response via : Initial Calibration
 Integrator: ChemStation

Volume Inj. : 2 µl
 Signal #1 Phase : ZB-MR2 Signal #2 Phase: ZB-MR2
 Signal #1 Info : 30Mx0.32mmx 0.50µ Signal #2 Info : 30M x 0.32mm x 0.25µm

Compound	RT#1	RT#2	Resp#1	Resp#2	ng/ml	ng/ml

System Monitoring Compounds						
1) SA Tetrachlo...	5.315	4.295	182.5E6	83028746	25.540	24.881
2) SA Decachlor...	11.608	9.673	107.3E6	50852281	15.022	14.061
Target Compounds						
31) L7 AR-1260-1	8.342	7.156	32353767	15417014	109.705	94.270
32) L7 AR-1260-2	8.608	7.352	58230989	13337926	169.636	68.048 #
33) L7 AR-1260-3	8.976	7.509	34537547	10752318	130.425	60.871 #
34) L7 AR-1260-4	9.226	7.994	22768996	9470895	74.529	59.797
35) L7 AR-1260-5	9.582	8.238	34208483	19727844	52.668	50.686m

(f)=RT Delta > 1/2 Window (#)=Amounts differ by > 25% (m)=manual int.

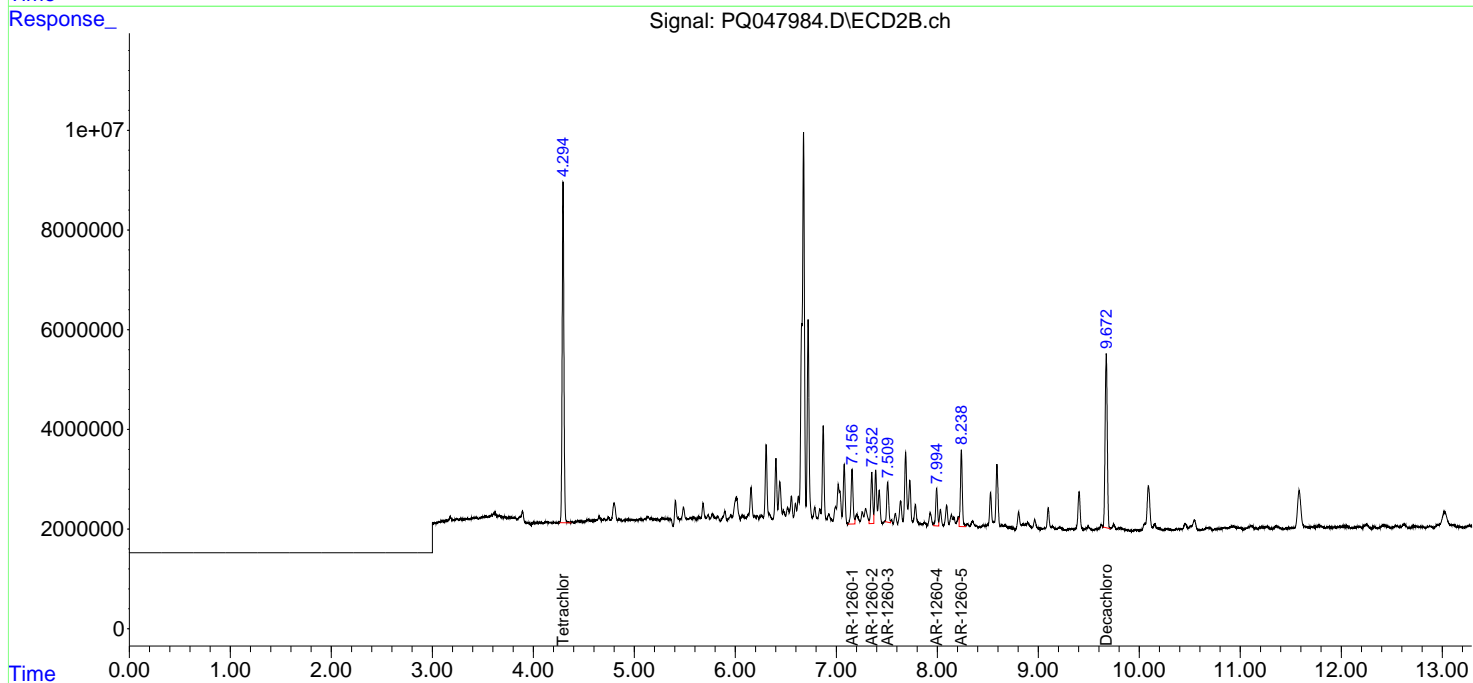
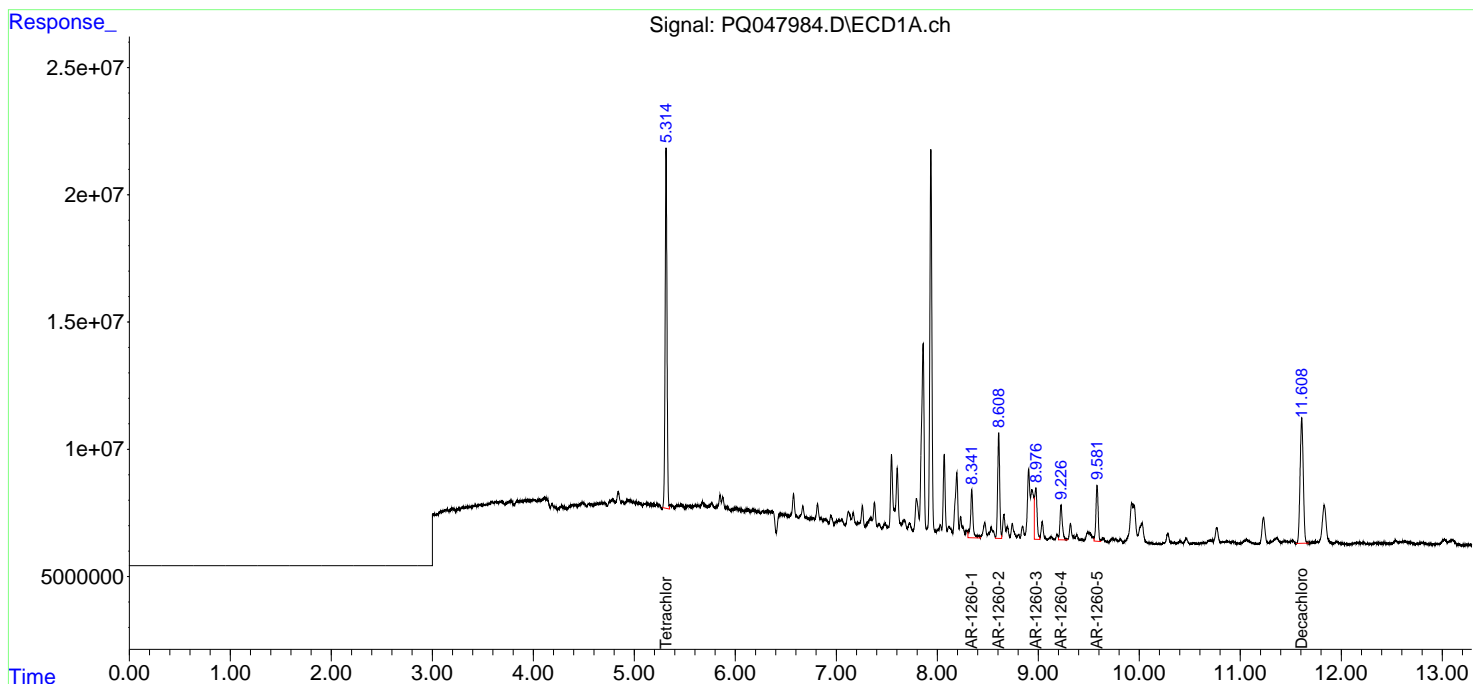
Data Path : Z:\pestpcbsrv\HPCHEM1\ECD_Q\Data\PQ060220\
 Data File : PQ047984.D
 Signal(s) : Signal #1: ECD1A.ch Signal #2: ECD2B.ch
 Acq On : 02 Jun 2020 17:53
 Operator : AJ\MA
 Sample : L2839-05
 Misc :
 ALS Vial : 27 Sample Multiplier: 1

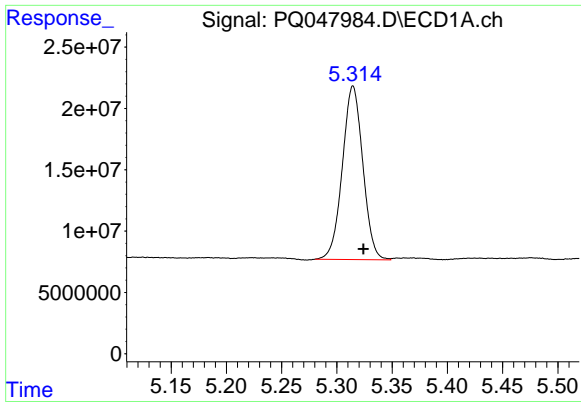
Instrument :
 ECD_Q
Client Sampled :
 NM13-COMP-2020-0-6

Manual Integrations
APPROVED
 Sohil
 6/4/2020 8:36:02 AM

Integration File signal 1: autoint1.e
 Integration File signal 2: autoint2.e
 Quant Time: Jun 03 01:40:26 2020
 Quant Method : Z:\pestpcbsrv\HPCHEM1\ECD_Q\Method\PQ052720.M
 Quant Title : GC EXTRACTABLES
 QLast Update : Wed May 27 17:33:08 2020
 Response via : Initial Calibration
 Integrator: ChemStation

Volume Inj. : 2 µl
 Signal #1 Phase : ZB-MR1 Signal #2 Phase: ZB-MR2
 Signal #1 Info : 30Mx0.32mmx 0.50µ Signal #2 Info : 30M x 0.32mm x 0.25µm





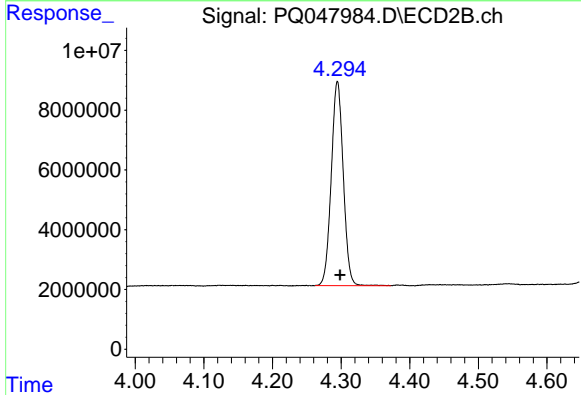
#1 Tetrachloro-m-xylene

R.T.: 5.315 min
 Delta R.T.: -0.009 min
 Response: 182489041
 Conc: 25.54 ng/ml

Instrument :
 ECD_Q
 ClientSampled :
 NM13-COMP-2020-0-6

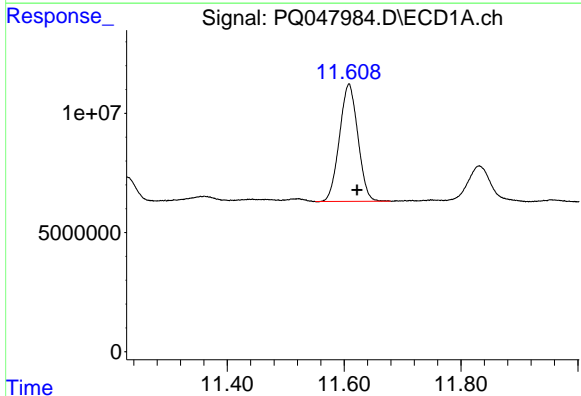
Manual Integrations
 APPROVED

Sohil
 6/4/2020 8:36:02 AM



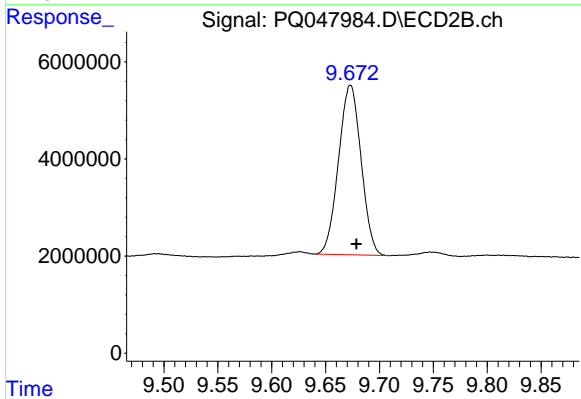
#1 Tetrachloro-m-xylene

R.T.: 4.295 min
 Delta R.T.: -0.003 min
 Response: 83028746
 Conc: 24.88 ng/ml



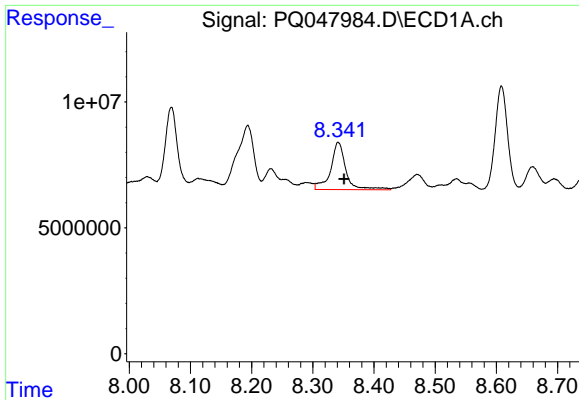
#2 Decachlorobiphenyl

R.T.: 11.608 min
 Delta R.T.: -0.014 min
 Response: 107287559
 Conc: 15.02 ng/ml



#2 Decachlorobiphenyl

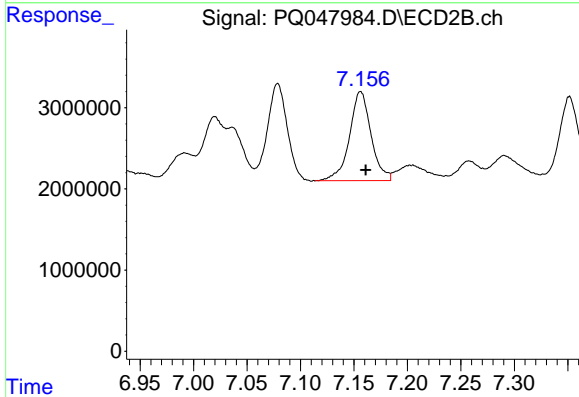
R.T.: 9.673 min
 Delta R.T.: -0.006 min
 Response: 50852281
 Conc: 14.06 ng/ml



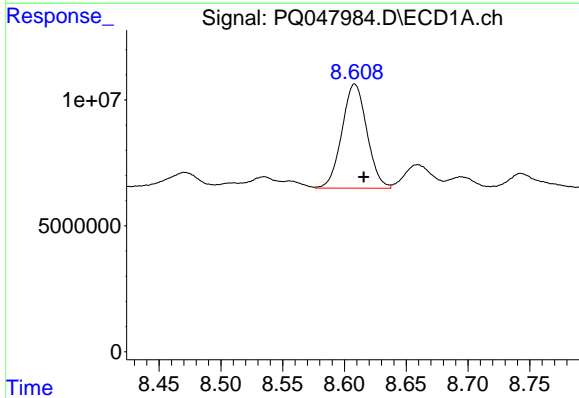
#31 AR-1260-1
 R.T.: 8.342 min
 Delta R.T.: -0.010 min
 Response: 32353767
 Conc: 109.70 ng/ml

Instrument :
 ECD_Q
ClientSampled :
 NM13-COMP-2020-0-6

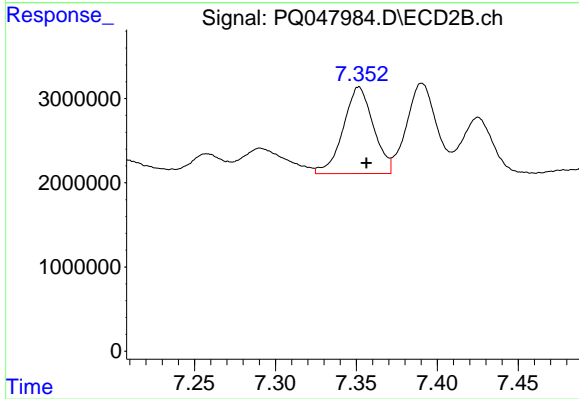
Manual Integrations
APPROVED
 Sohil
 6/4/2020 8:36:02 AM



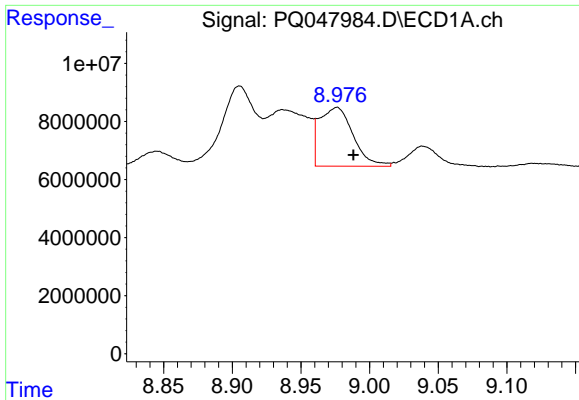
#31 AR-1260-1
 R.T.: 7.156 min
 Delta R.T.: -0.005 min
 Response: 15417014
 Conc: 94.27 ng/ml



#32 AR-1260-2
 R.T.: 8.608 min
 Delta R.T.: -0.007 min
 Response: 58230989
 Conc: 169.64 ng/ml



#32 AR-1260-2
 R.T.: 7.352 min
 Delta R.T.: -0.005 min
 Response: 13337926
 Conc: 68.05 ng/ml

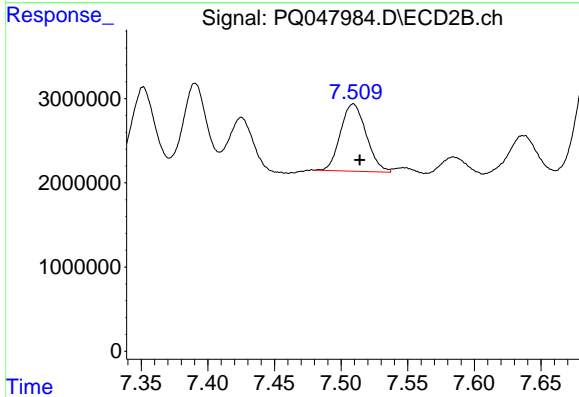


#33 AR-1260-3

R.T.: 8.976 min
 Delta R.T.: -0.013 min
 Response: 34537547
 Conc: 130.43 ng/ml

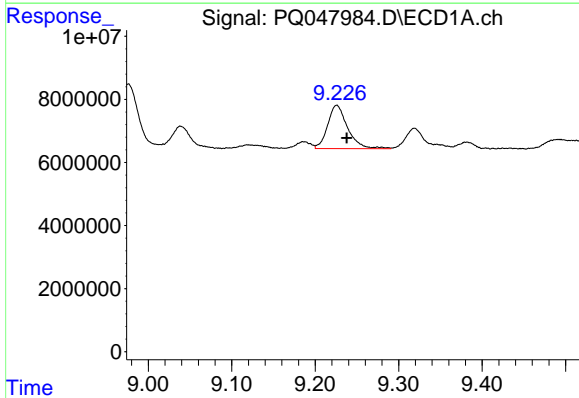
Instrument :
 ECD_Q
ClientSampled :
 NM13-COMP-2020-0-6

Manual Integrations
APPROVED
 Sohil
 6/4/2020 8:36:02 AM



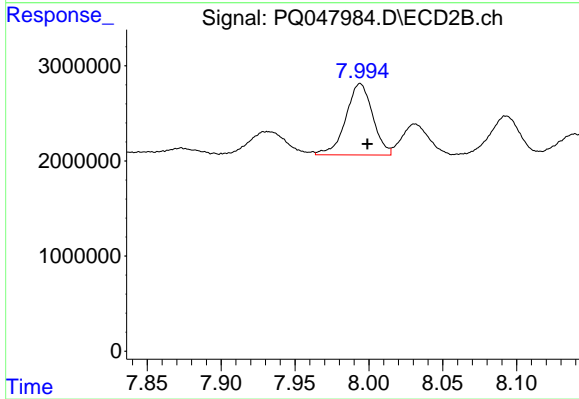
#33 AR-1260-3

R.T.: 7.509 min
 Delta R.T.: -0.005 min
 Response: 10752318
 Conc: 60.87 ng/ml



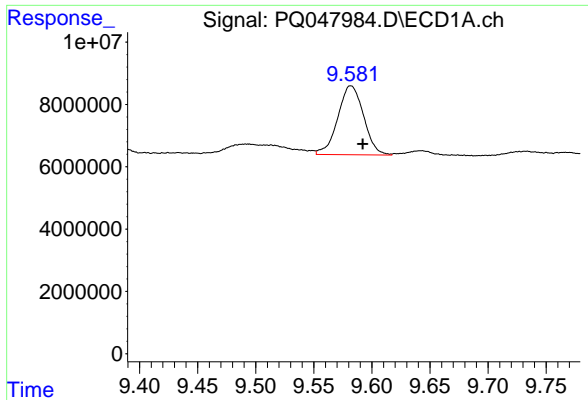
#34 AR-1260-4

R.T.: 9.226 min
 Delta R.T.: -0.012 min
 Response: 22768996
 Conc: 74.53 ng/ml



#34 AR-1260-4

R.T.: 7.994 min
 Delta R.T.: -0.005 min
 Response: 9470895
 Conc: 59.80 ng/ml



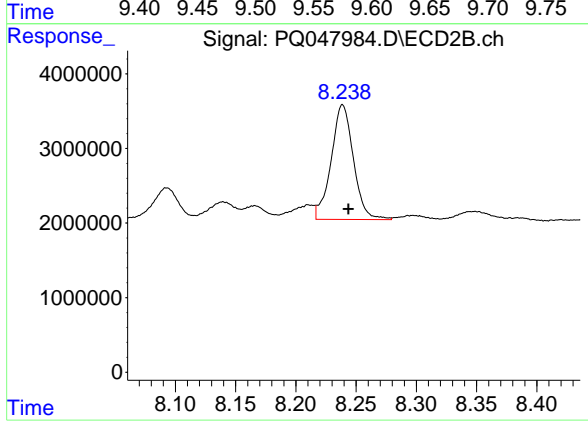
#35 AR-1260-5

R.T.: 9.582 min
Delta R.T.: -0.010 min
Response: 34208483
Conc: 52.67 ng/ml

Instrument :
ECD_Q
ClientSampled :
NM13-COMP-2020-0-6

Manual Integrations
APPROVED

Sohil
6/4/2020 8:36:02 AM



#35 AR-1260-5

R.T.: 8.238 min
Delta R.T.: -0.005 min
Response: 19727844
Conc: 50.69 ng/ml m